

## 7.0 Images

### 7.1 Field Photography





**Image 1: Disturbed beyond previously assessed areas**



**Image 3: Disturbed beyond previously assessed areas**



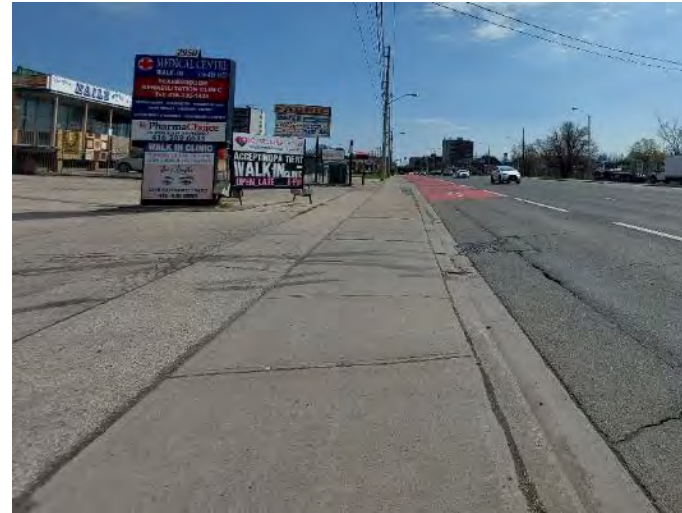
**Image 2: Disturbed beyond previously assessed areas**



**Image 4: Disturbed beyond previously assessed areas**



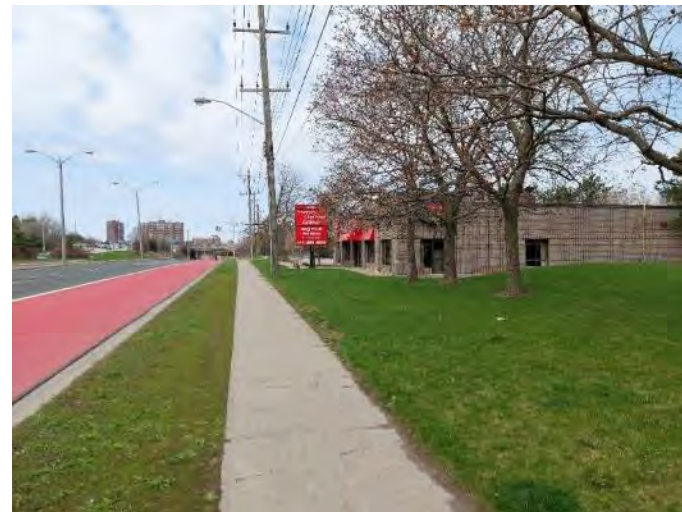
**Image 5: Disturbed beyond previously assessed areas**



**Image 7: Disturbed beyond previously assessed areas**



**Image 6: Disturbed beyond previously assessed areas**



**Image 8: Disturbed beyond previously assessed areas**

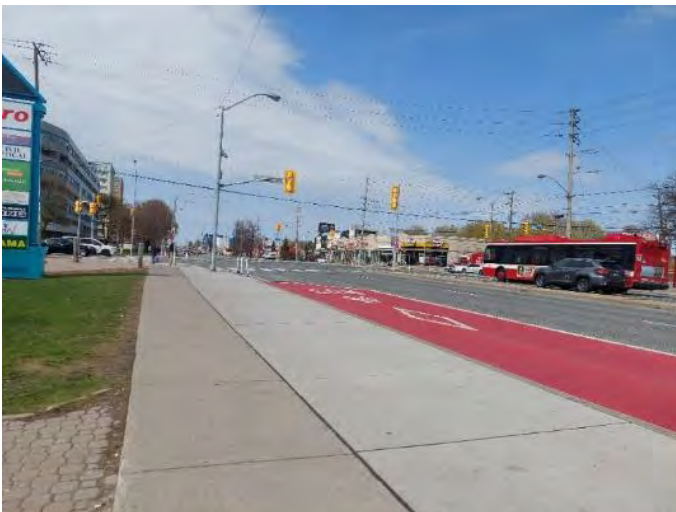




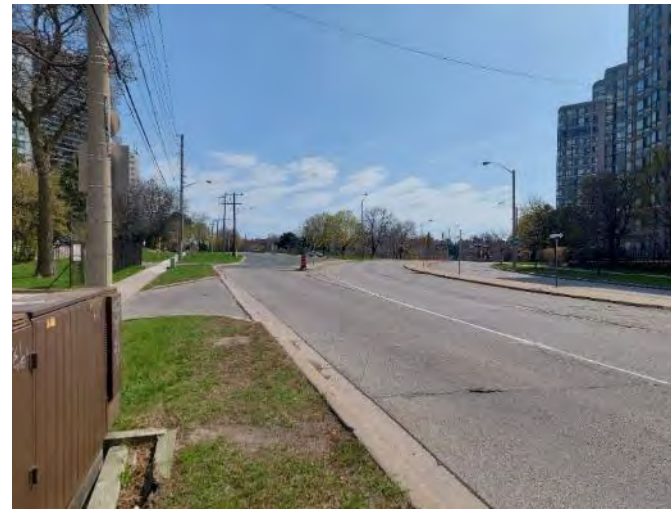
**Image 9: Disturbed beyond previously assessed areas**



**Image 11: Disturbed beyond previously assessed areas**



**Image 10: Disturbed beyond previously assessed areas**



**Image 12: Disturbed beyond previously assessed areas**

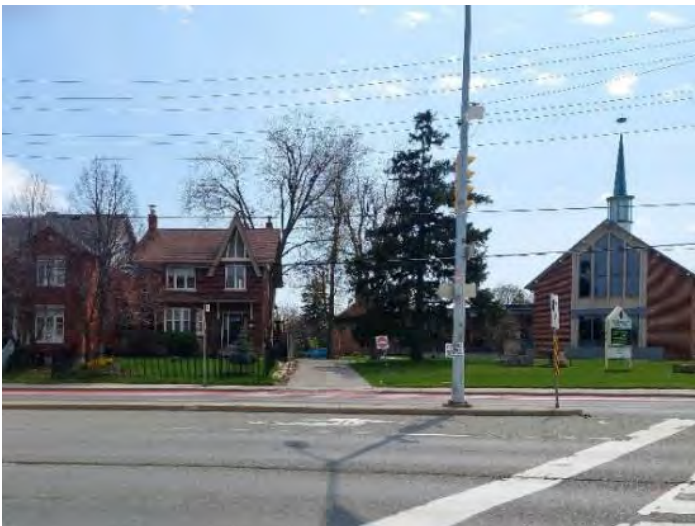




**Image 13: Disturbed beyond previously assessed areas**



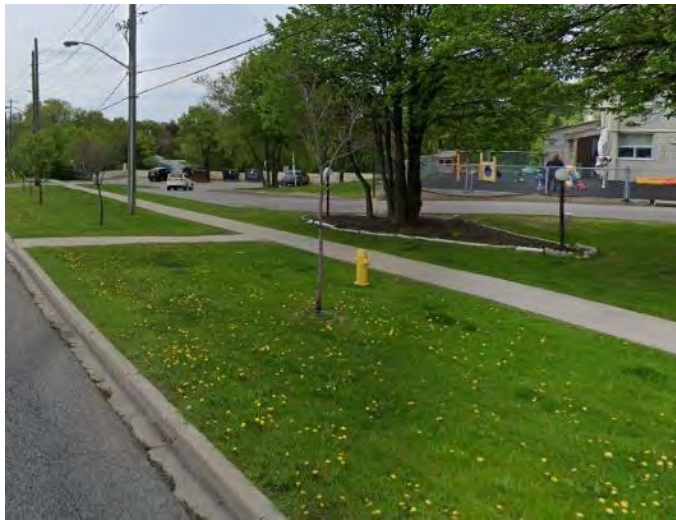
**Image 15: Stage 2 Survey required in eastern parking lot**



**Image 14: Stage 2 Survey required south of ROW**



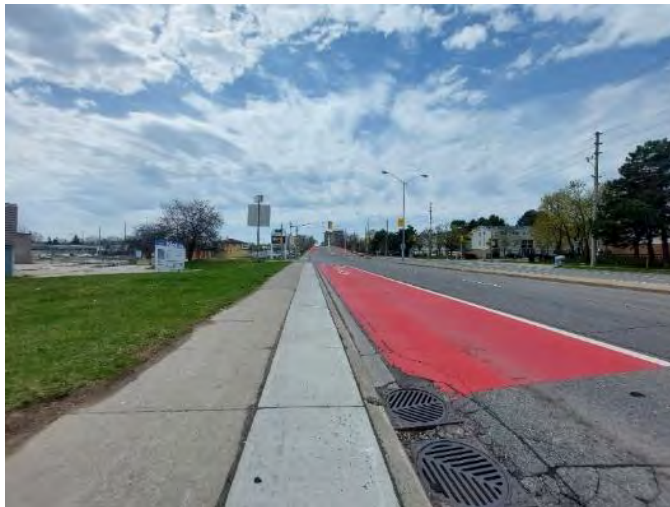
**Image 16: Disturbed beyond previously assessed areas**



**Image 17: Disturbed beyond previously assessed areas**



**Image 19: Disturbed beyond previously assessed areas**



**Image 18: Disturbed beyond previously assessed areas**



**Image 20: Disturbed beyond previously assessed areas**





**Image 21: Disturbed beyond previously assessed areas**



**Image 23: Disturbed beyond previously assessed areas**



**Image 22: Disturbed within TPSS 82050 and 116402**



**Image 24: Disturbed beyond previously assessed areas**



**Image 25: Stage 2 Survey required on private lawn**



**Image 27: Disturbed within the Study Area**



**Image 26: Disturbed within TPSS 479208**



**Image 28: Stage 2 Survey required south of ROW**

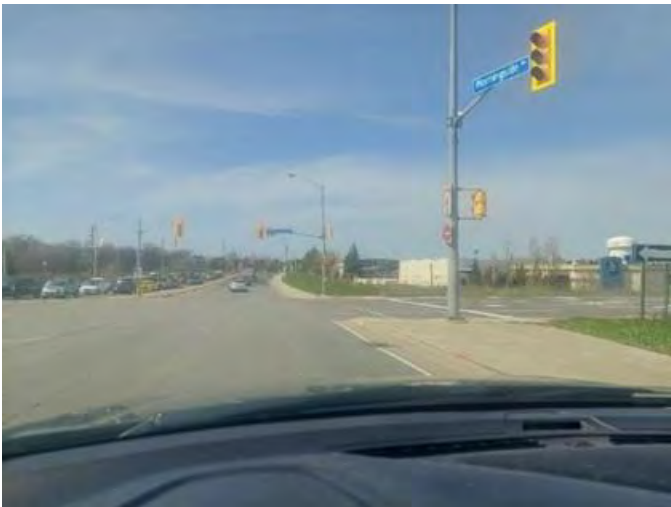




**Image 29: Disturbed within TPSS U – 338**



**Image 31: Disturbed within TPSS 371747**



**Image 30: Disturbed beyond previously assessed areas**



**Image 32: Disturbed beyond previously assessed areas**



**Image 33: Disturbed beyond previously assessed areas**



**Image 35: Disturbed within TPSS 116363**



**Image 34: Disturbed beyond previously assessed areas**



**Image 36: Disturbed**





**Image 37: Disturbed**



**Image 39: Disturbed within TPSS 44148**



**Image 38: Stage 2 Survey required north of ROW**



**Image 40: Disturbed**



**Image 41: Disturbed beyond previously assessed areas**



**Image 43: Disturbed within TPSS 224746**



**Image 42: Sloped towards East Highland Creek south of ROW**



**Image 44: Disturbed beyond previously assessed areas**





**Image 45: Disturbed beyond previously assessed areas**



**Image 47: Disturbed beyond previously assessed areas**



**Image 46: Disturbed beyond previously assessed areas**



**Image 48: Disturbed beyond previously assessed areas**



## 7.2 Historical Imagery



Image 49: 1961 Aerial Kingston Road at Eglinton Avenue and Scarborough Golf Club Road





**Image 50: 1971 Aerial Kingston Road from Galloway Road to Poplar Road**



**Image 51: 1973 Aerial Kingston Road from Galloway Road to Poplar Road**





**Image 52: 1963 Aerial Morningside Bridge construction**





**Image 53: 1965 Aerial Morningside Bridge construction**





**Image 54: 1991 Aerial Morningside Avenue and Highway 401**



**Image 55: 2009 Google StreetView of 891 Morningside Avenue and Hydro corridor, location of TPSS U – 338.**



**Image 56: 2011 Google StreetView of 891 Morningside Avenue and Hydro corridor, location of TPSS U – 338.**





**Image 57: 1970 Aerial Sheppard Avenue from Morningside Avenue to Conlins Road**



**Image 58: 1975 Aerial Neilson Road and surrounding subdivisions at Sheppard Avenue**



**Image 59: 1975 Aerial Neilson Road and surrounding subdivisions at Sheppard Avenue**





**Image 60: 1981 Aerial of TPSS Site 44148 east of Neilson Road and north of Sewells Road**



8.0 Maps

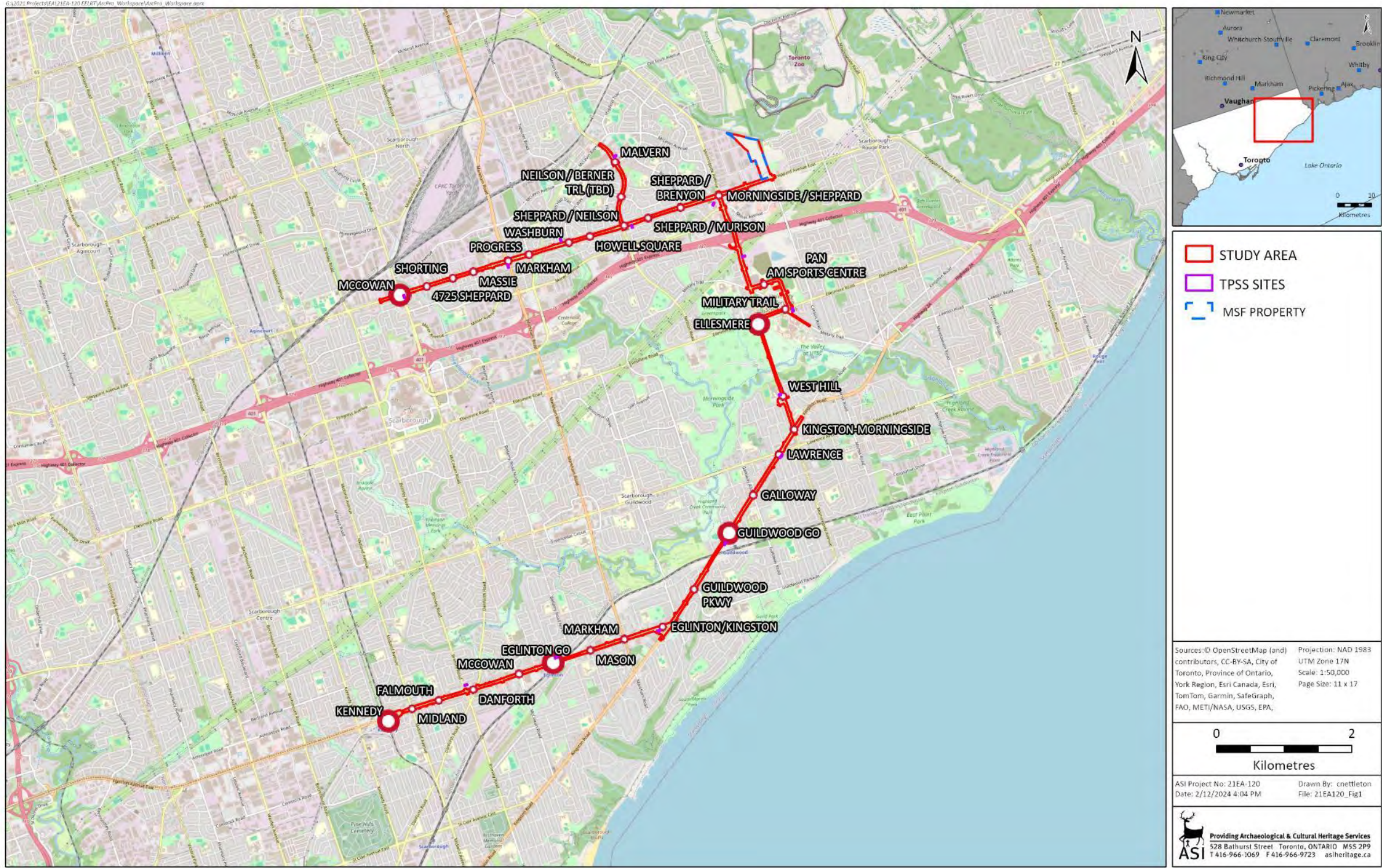


Figure 1: Eglinton East LRT Existing Conditions Study Area





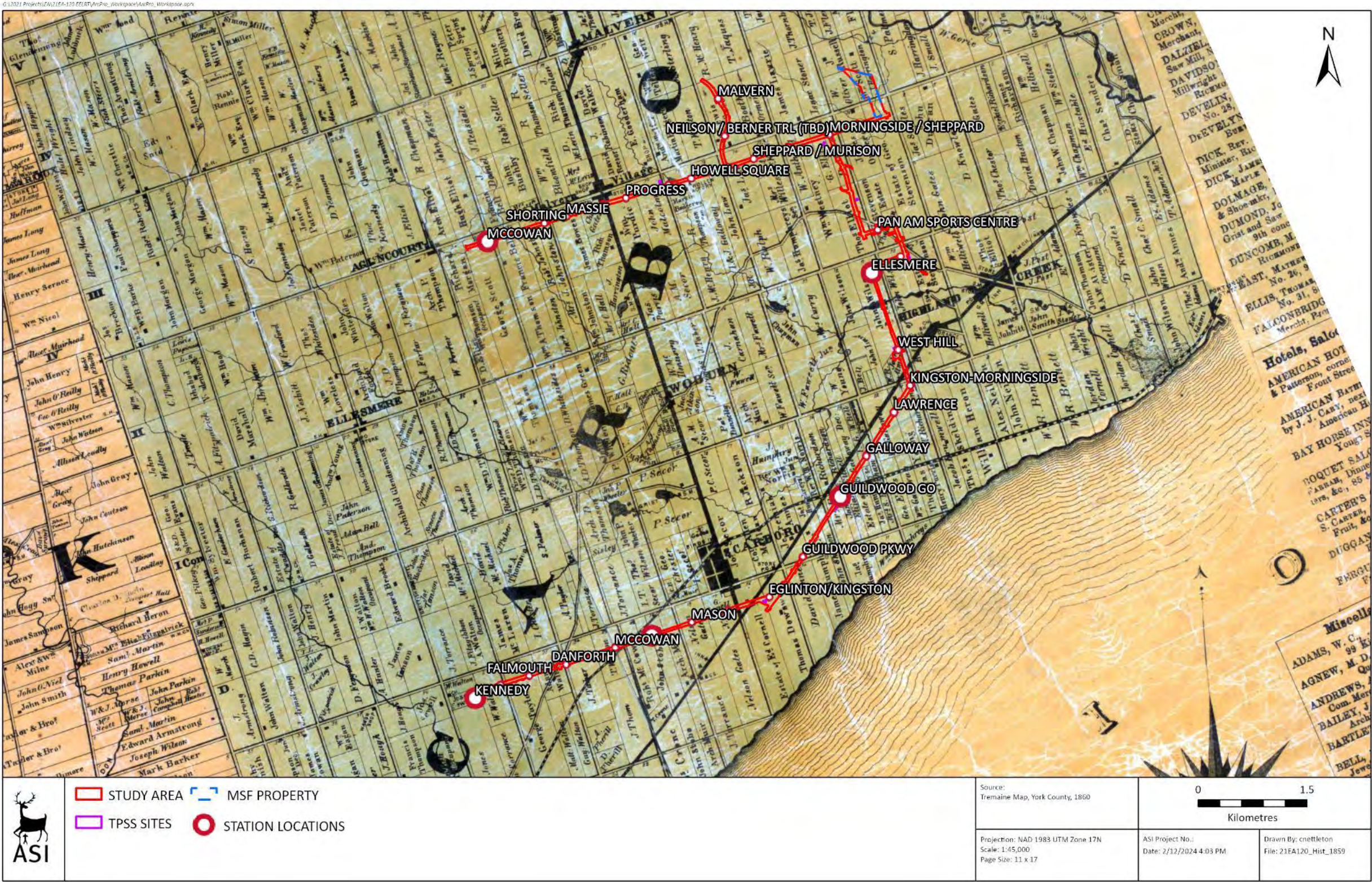


Figure 2: Study Area overlaid on the 1860 York County map







**Figure 3: Study Area overlaid on the 1878 Scarborough Township map**





Figure 4: Study Area Overlaid on the 1914/1915 Toronto and Markham topographic maps







Figure 5: Study Area on 1954 Aerial Photography







Figure 6: Study Area on 1992 Aerial Photography





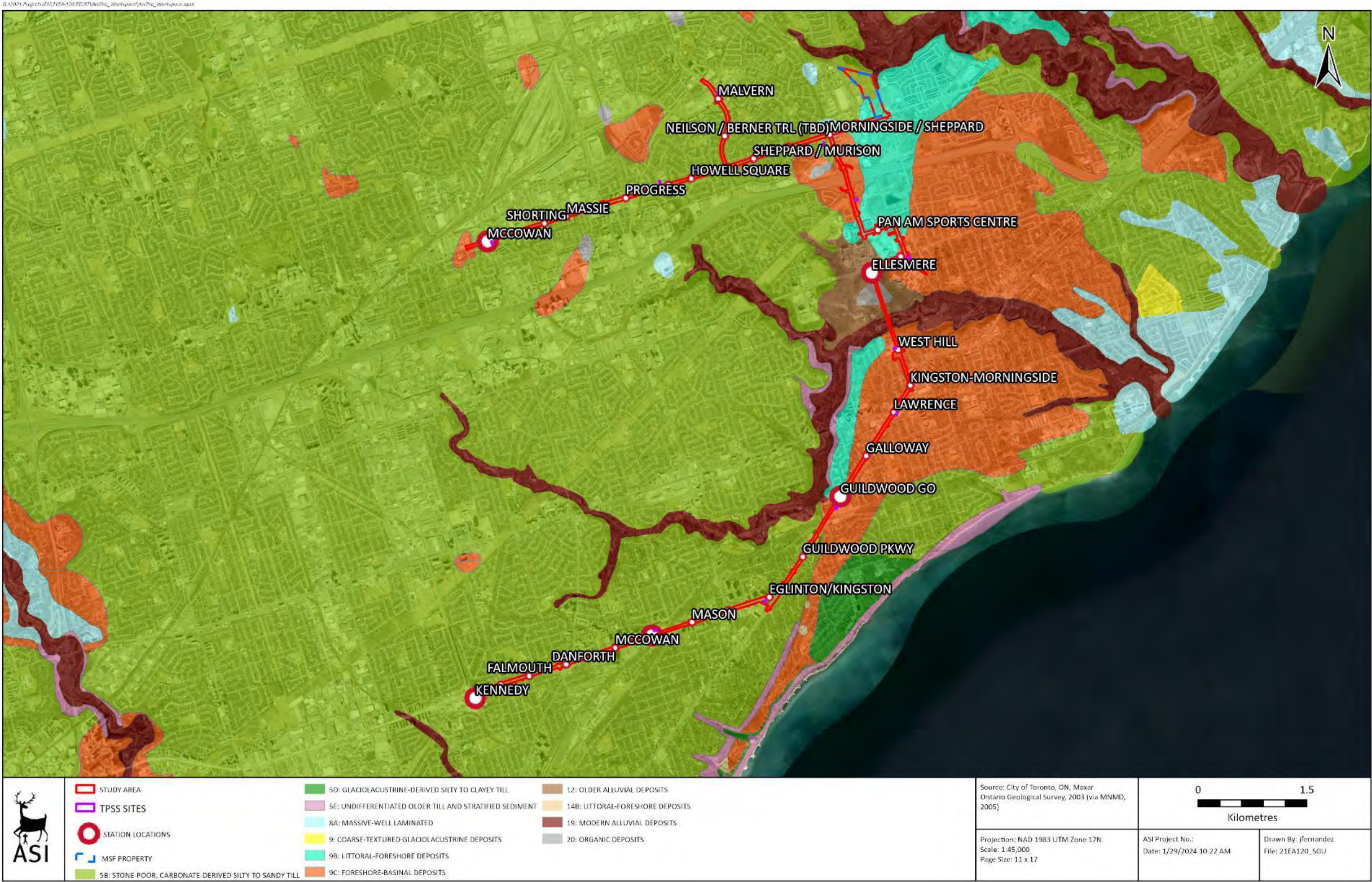


Figure 7: Study Area – Surficial Geology





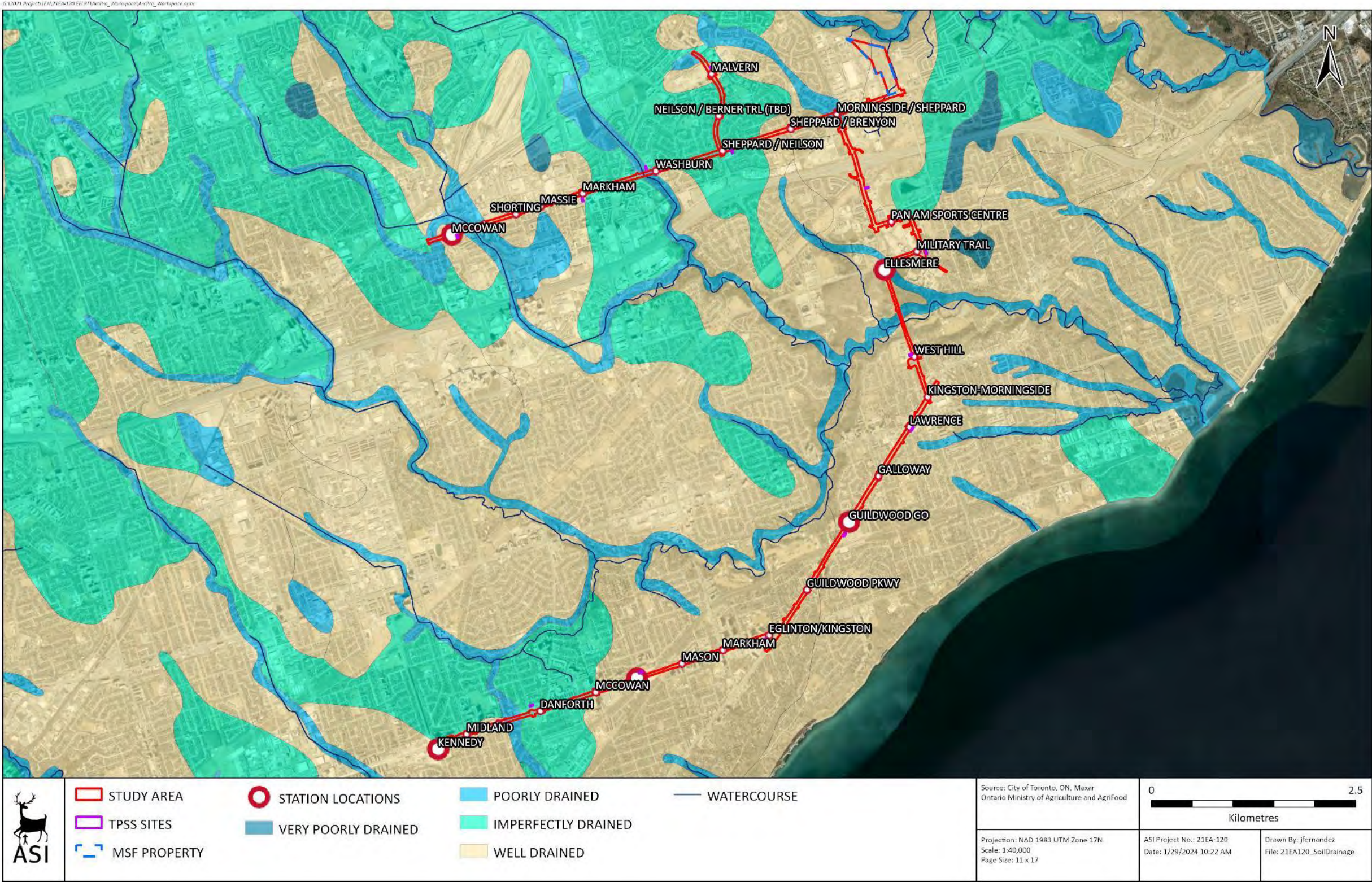


Figure 8: Study Area – Soil Drainage





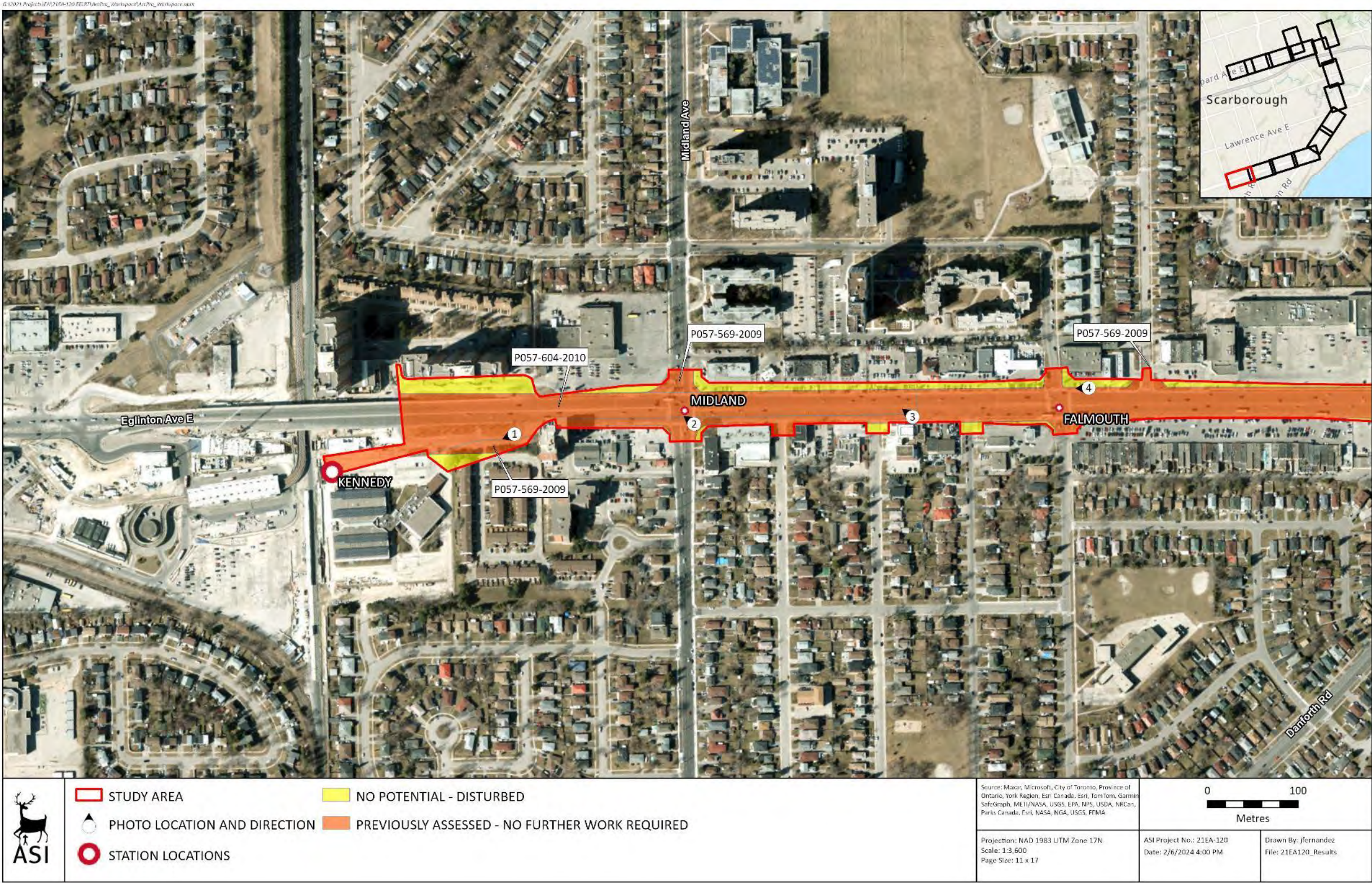


Figure 9: Stage 1 Results - Kennedy Station to Brimley Road





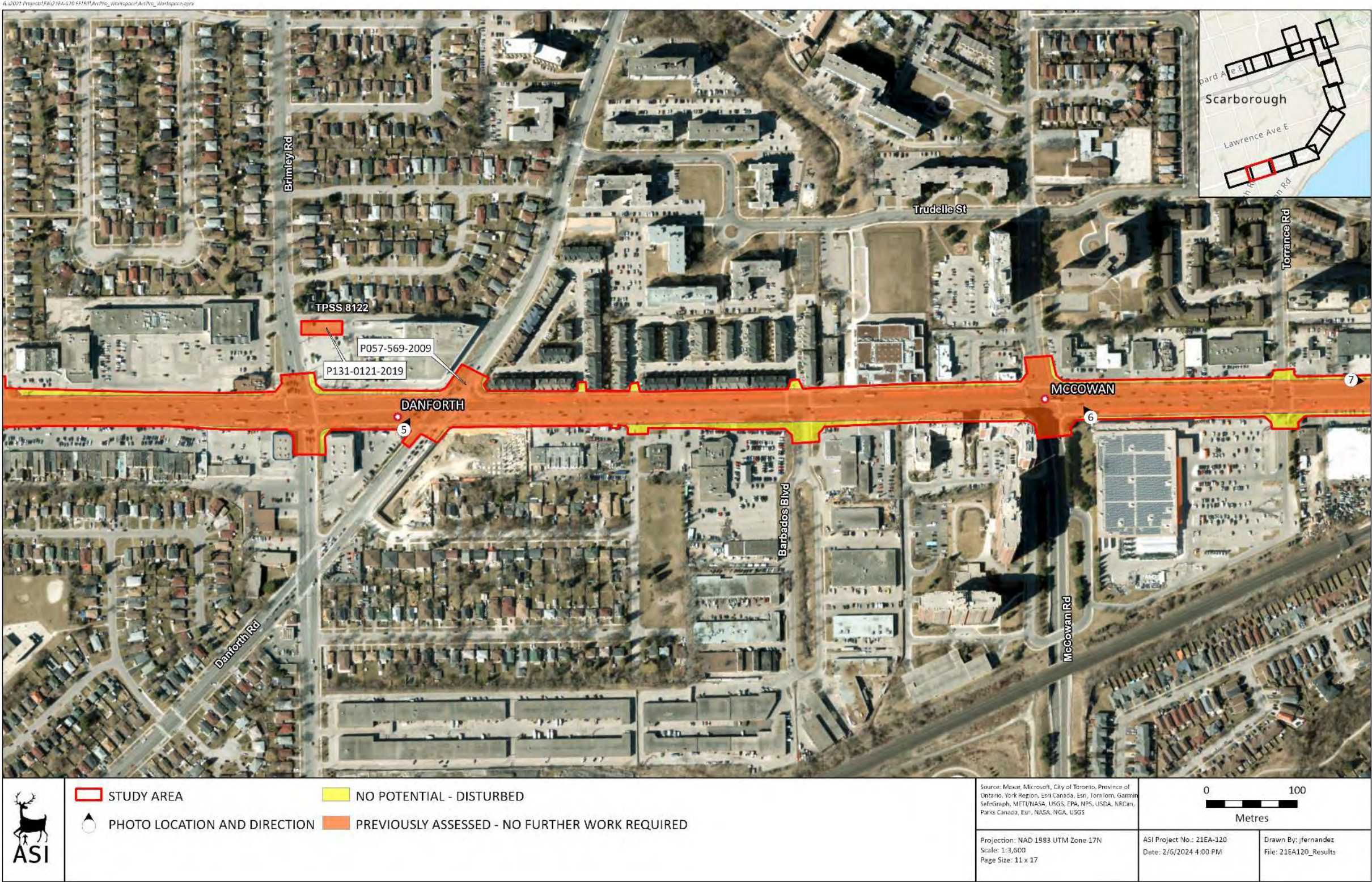


Figure 10: Stage 1 Results - Brimley Road to Torrance Road





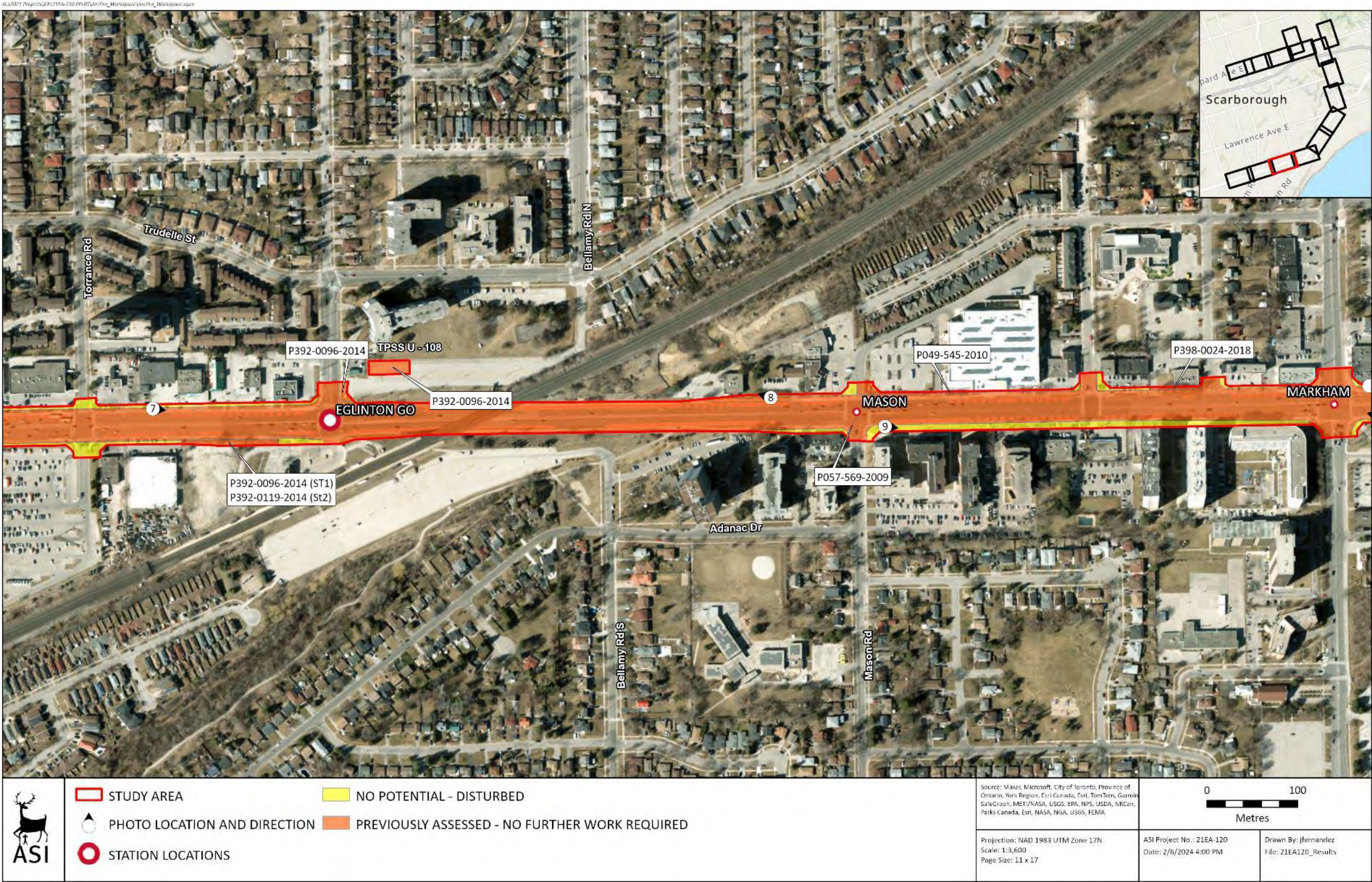


Figure 11: Stage 1 Results - Eglinton Avenue East from Torrance Road to Markham Road





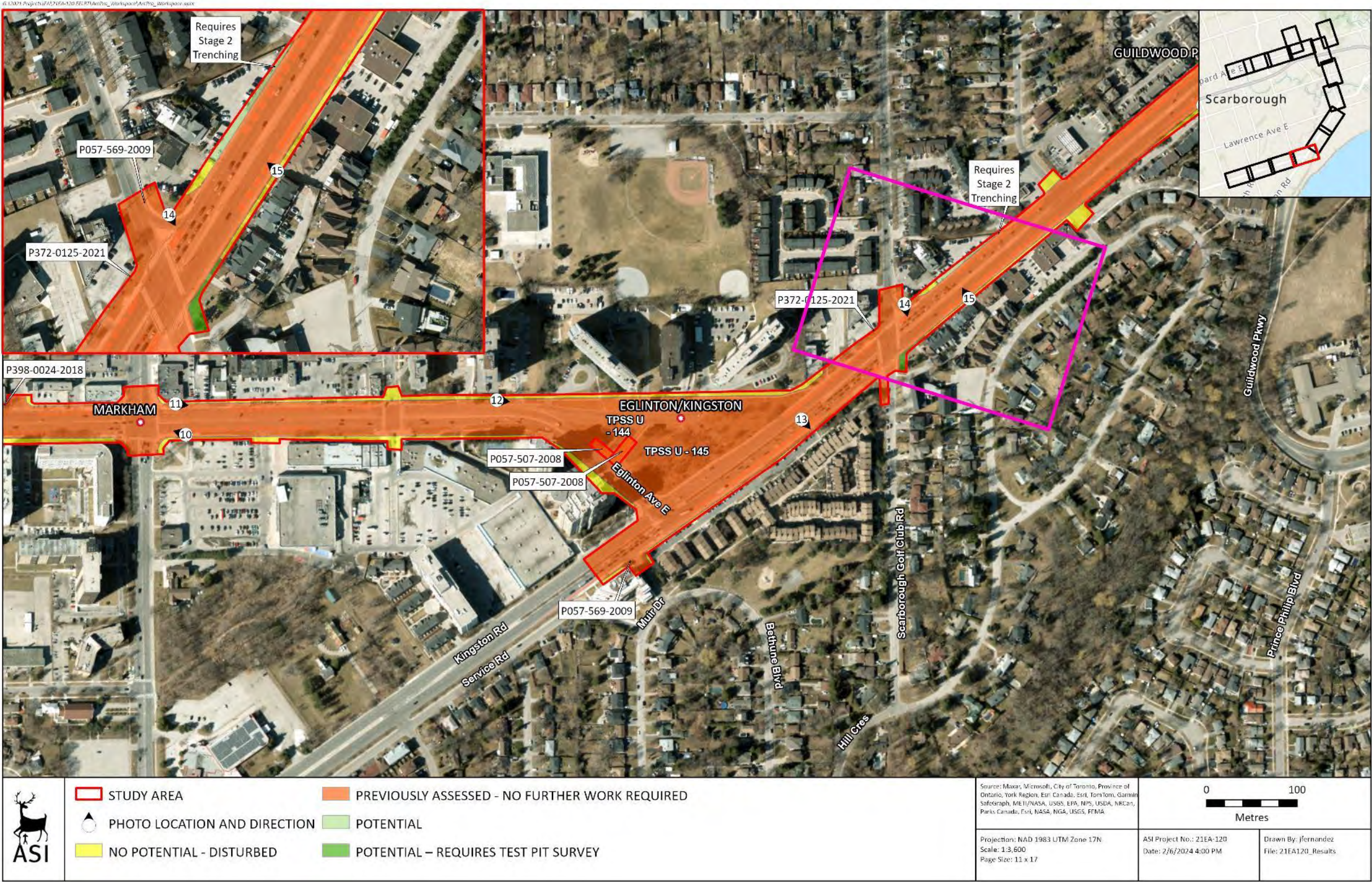


Figure 12: Stage 1 Results - Eglinton Avenue East at Markham Road to Kingston Road at Guildwood Parkway





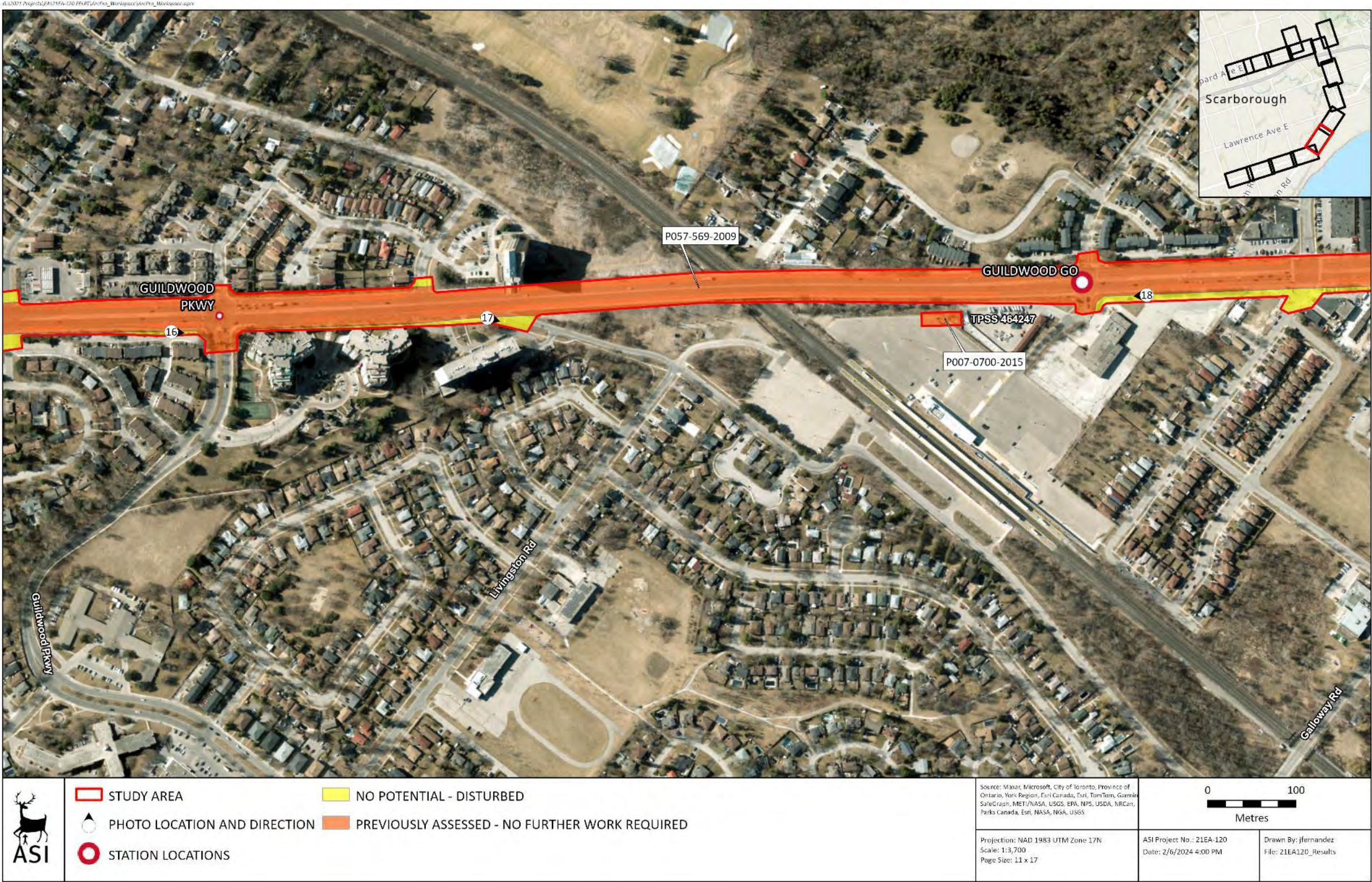


Figure 13: Stage 1 Results - Kingston Road from Guildwood Parkway to Guildwood GO Station







Figure 14: Stage 1 Results - Kingston Road from Guildwood GO Station to Lawrence Avenue East





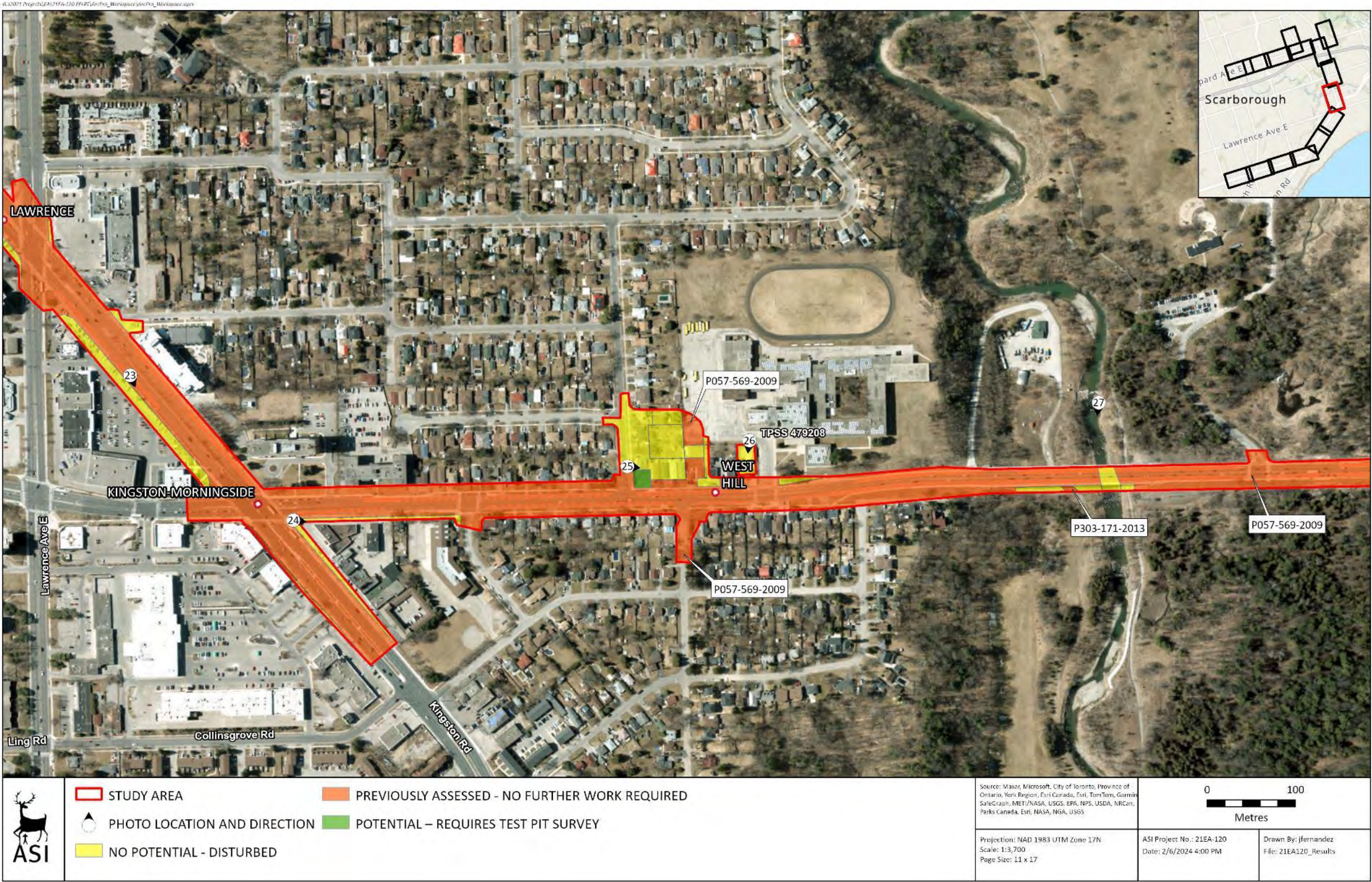


Figure 15: Stage 1 Results - Kingston Road from Lawrence Avenue East to Morningside Avenue at Highland Creek





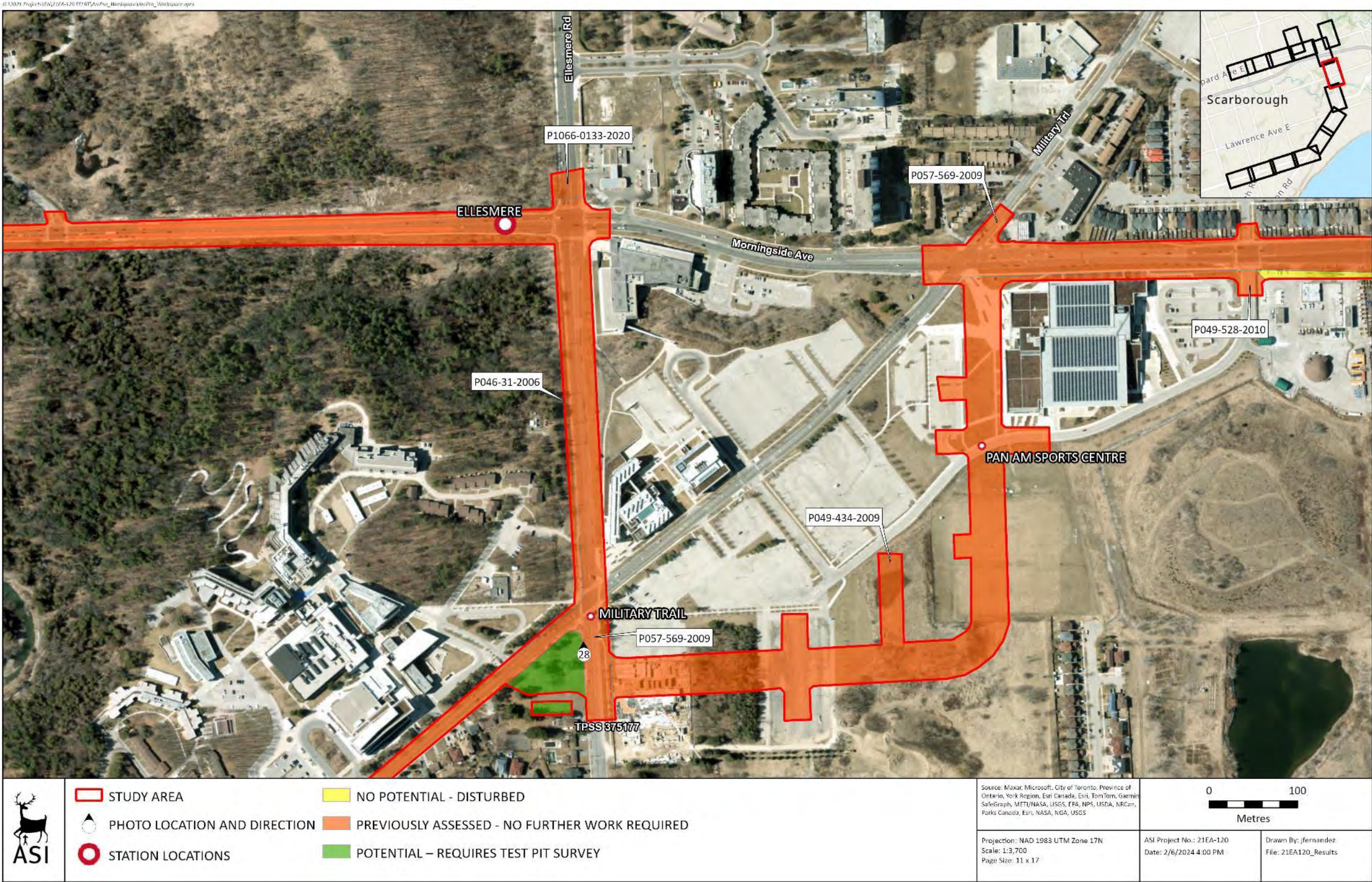


Figure 16: Stage 1 Results - Morningside Avenue from the bridge over Highland Creek to the Pan Am Sports Centre





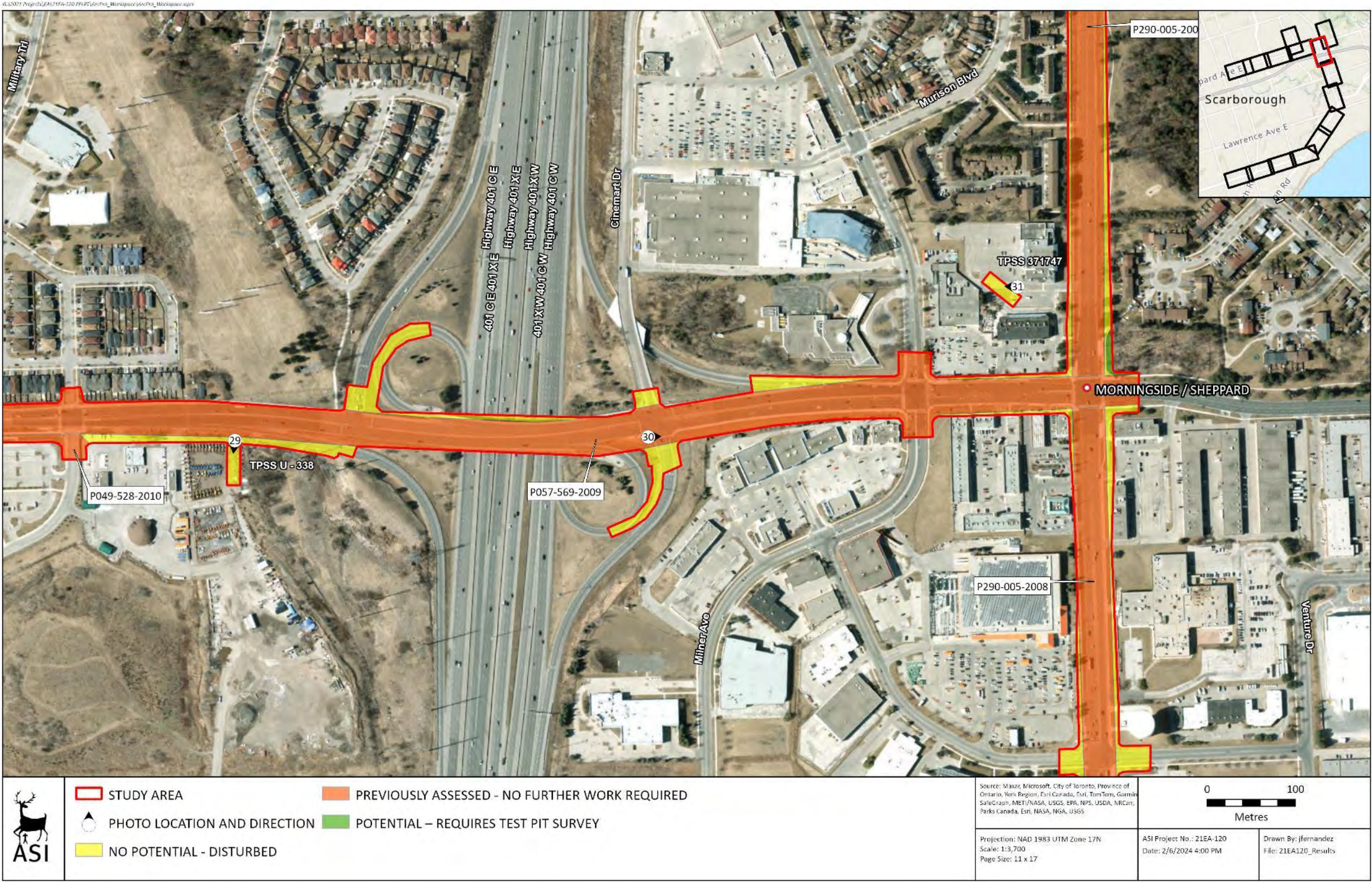


Figure 17: Stage 1 Results - Pan Am Sports Centre to Morningside Avenue and Sheppard Avenue East





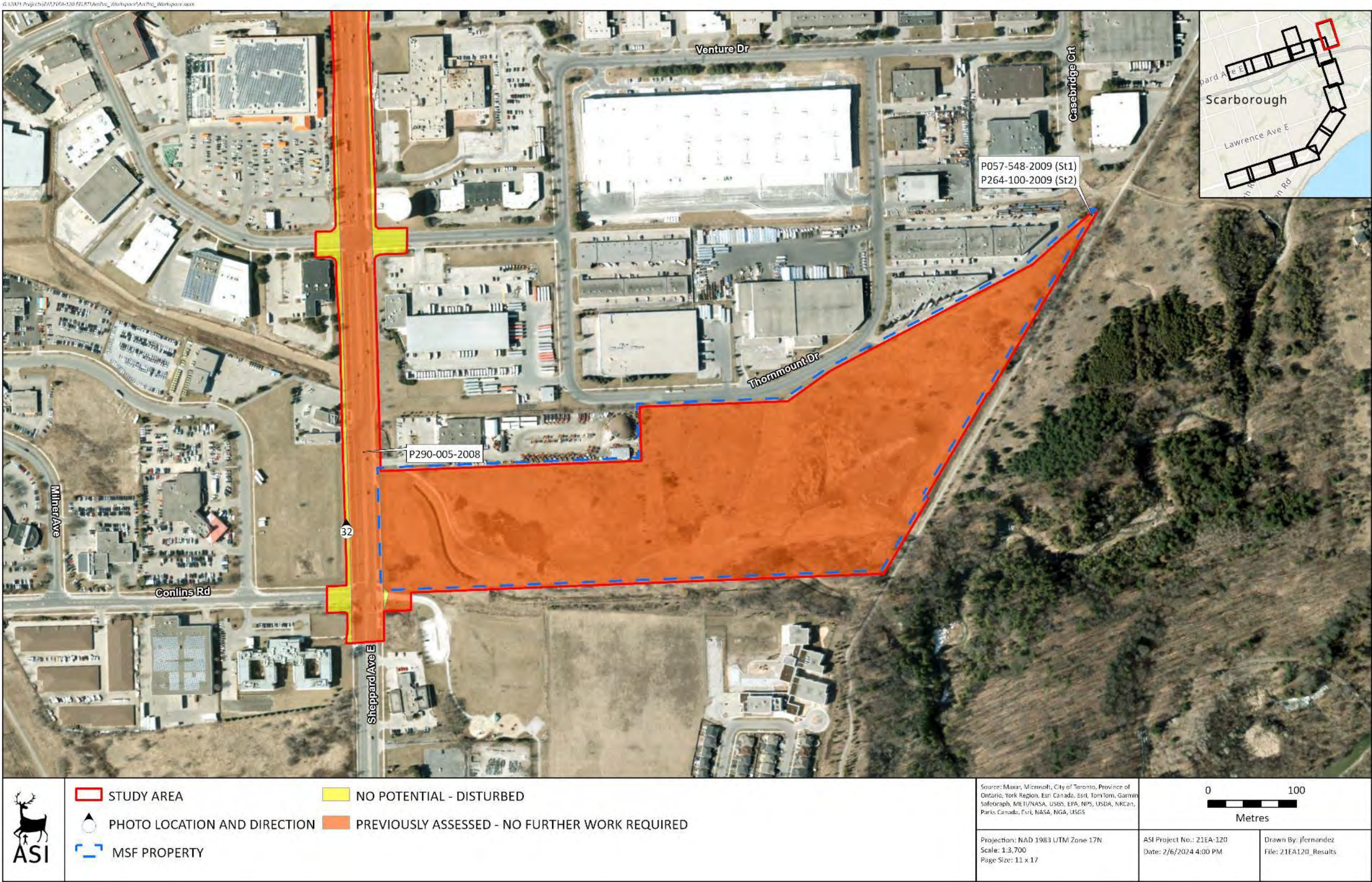


Figure 18: Stage 1 Results - Sheppard Avenue East to the Maintenance Storage Facility





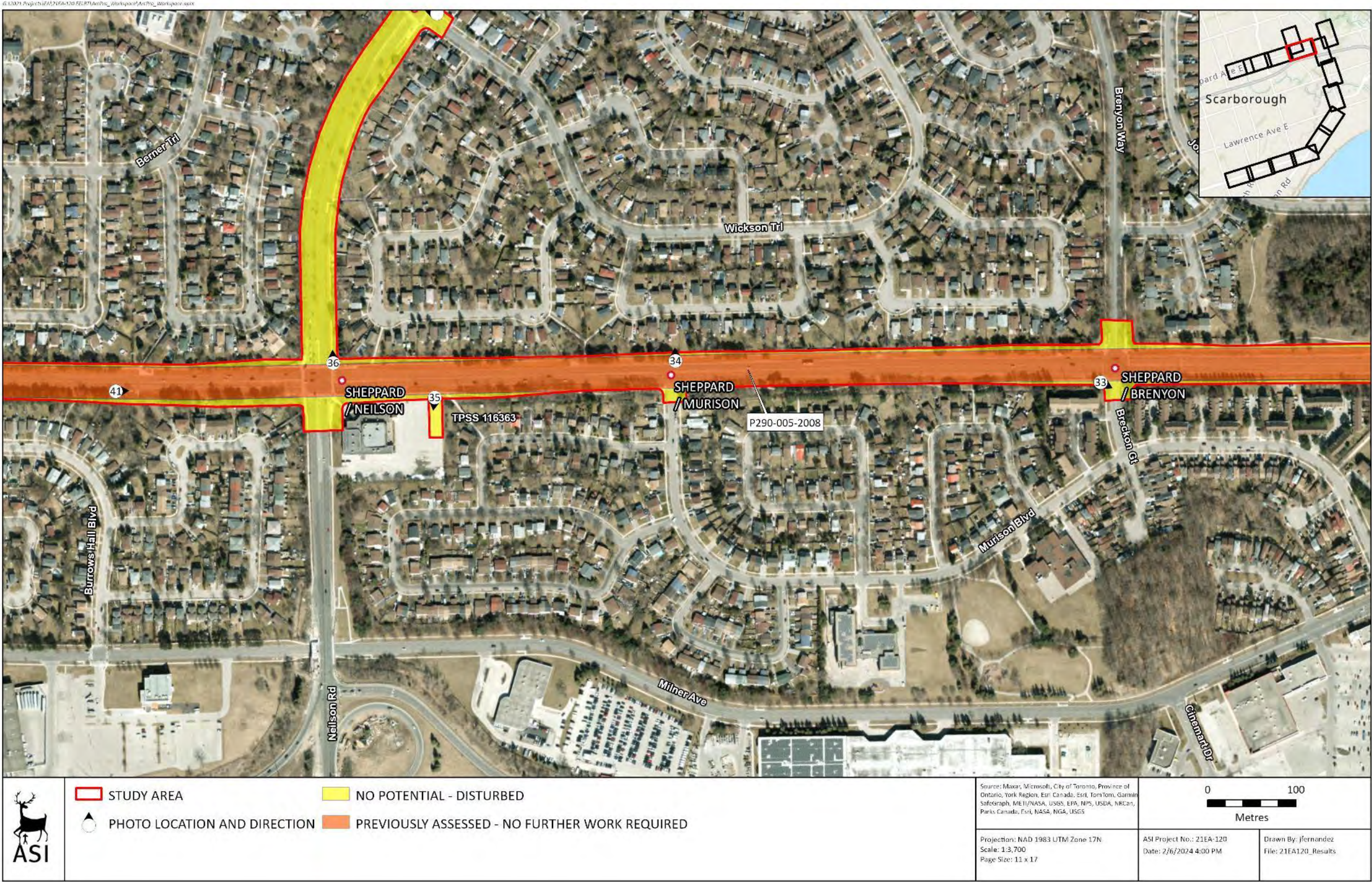


Figure 19: Stage 1 Results - Sheppard Avenue East Brenyon Way to west of Neilson Road





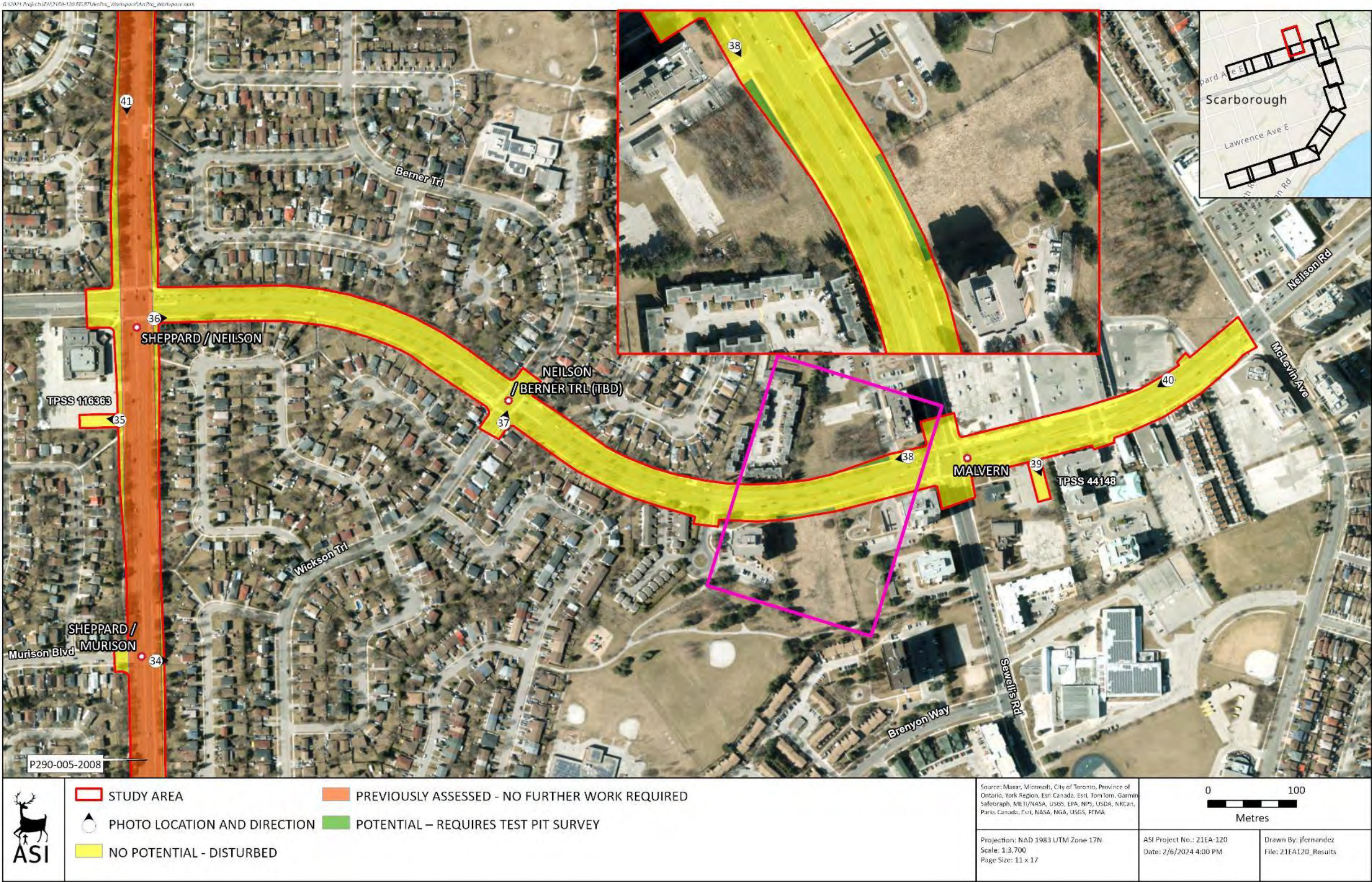


Figure 20: Stage 1 Results - Neilson Road from Sheppard Avenue East to McLevin Avenue







**Figure 21: Stage 1 Results - Sheppard Avenue East from west of Neilson Road to Progress Avenue**



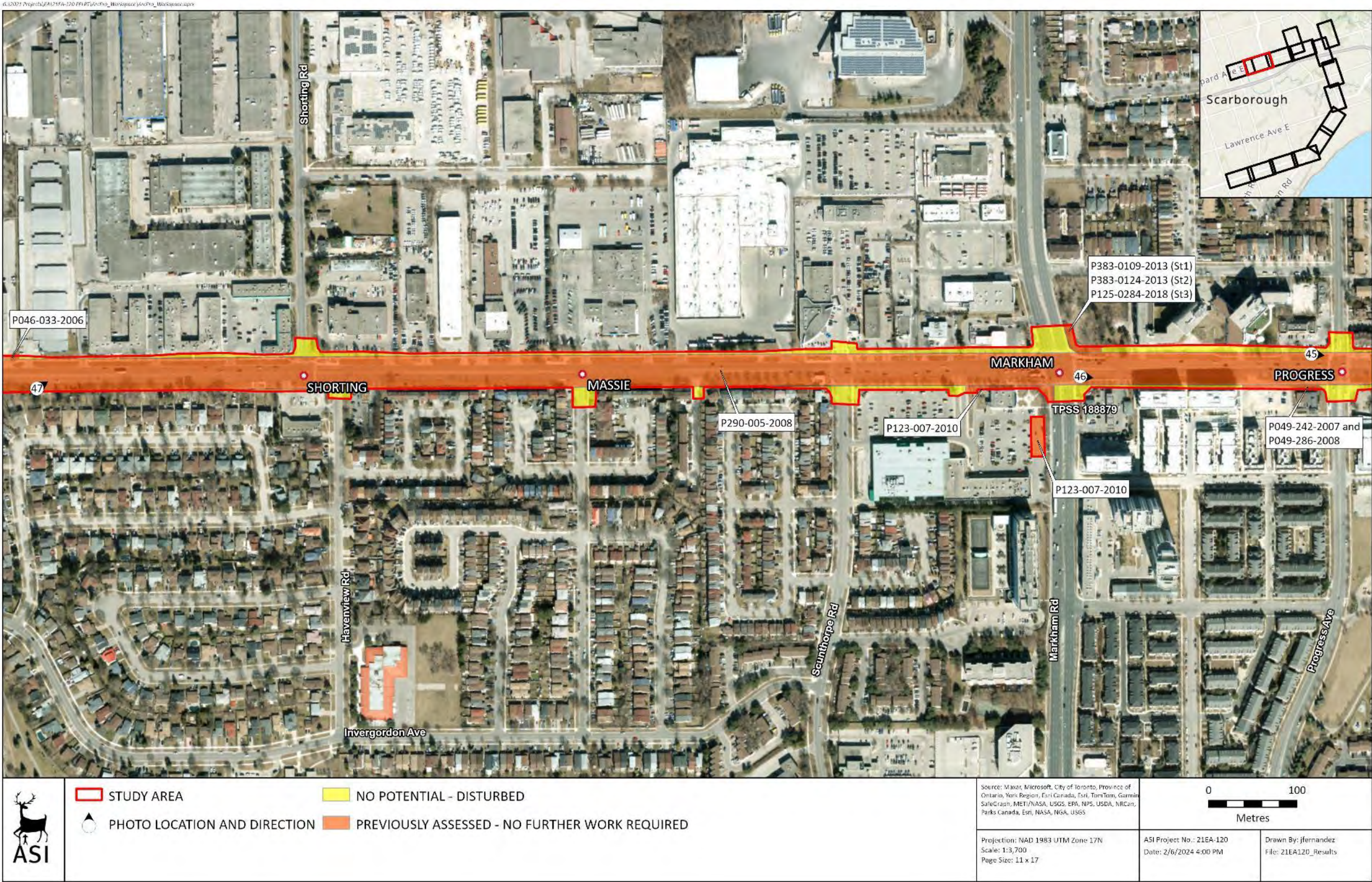


Figure 22: Stage 1 Results - Sheppard Avenue from Progress Avenue to Havenview Road







Figure 23: Stage 1 Results - Sheppard Avenue from Havenview Road to west of McCowan Road

