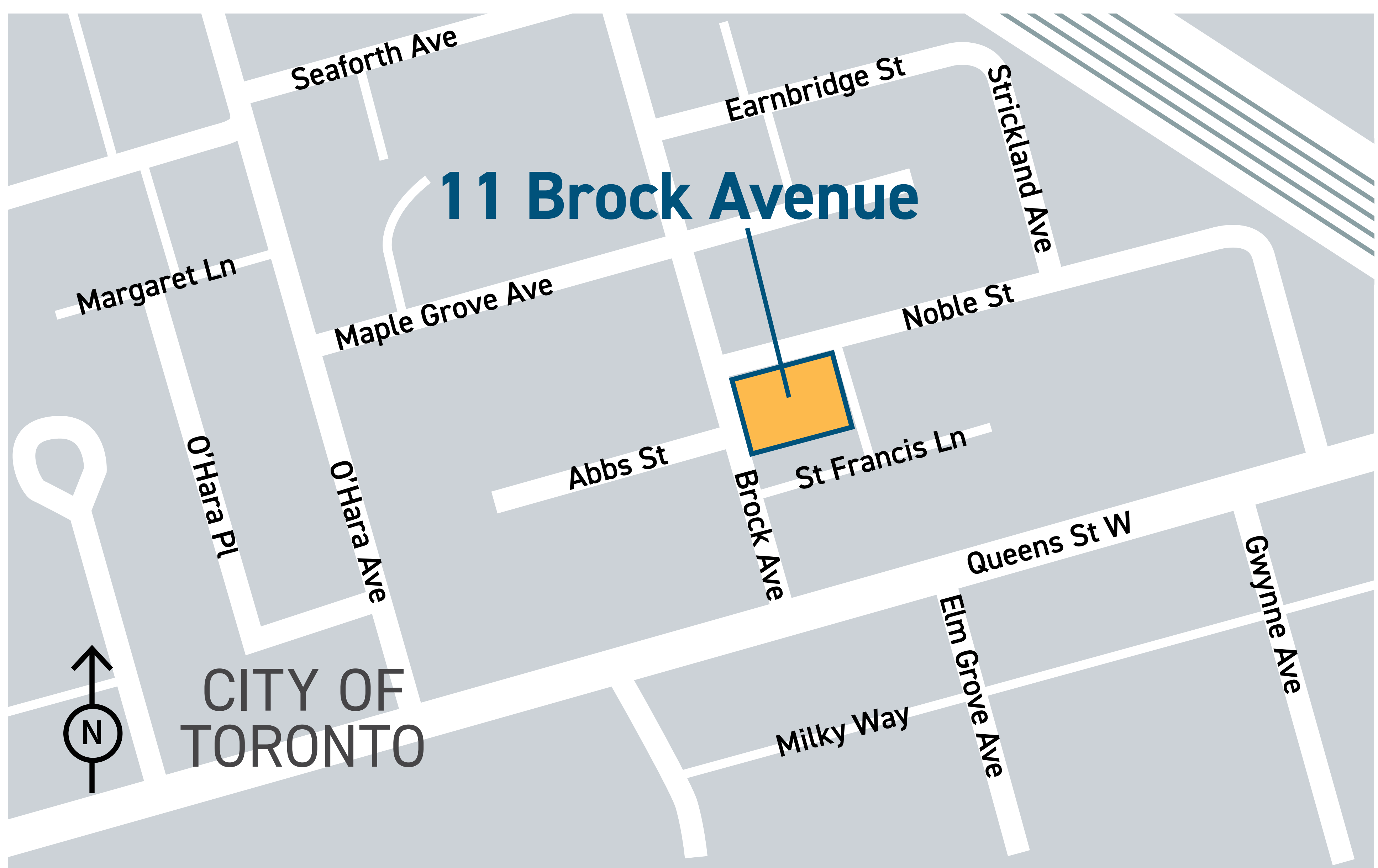


Creating new affordable and sustainable homes at 11 Brock Ave.

The City of Toronto, in partnership with the Government of Canada, is building new affordable homes at 11 Brock Ave. The City purchased this property from the Province of Ontario in 2019 for the purpose of creating new affordable housing.

The site is envisioned to have a four-storey building and provide approximately 42 homes with supports to maintain people's health, wellbeing, and housing stability.

As identified as a priority in the Housing TO Action Plan, homes with supports provide people with good quality, safe, affordable and permanent homes.



Project partners – PARC

Supporting the wellbeing of residents

In the Heart of Parkdale for Over 40 Years

PARC began in 1977 when a group of volunteers observed the large number of adults living in Parkdale rooming and boarding houses. Many were survivors of the psychiatric system, had little money, few family contacts and no real place to go and connect with peers. On March 17th 1980, PARC opened its doors as a pilot community mental health program. Our passion for providing member-driven programming, employment, food security, social space and safe supportive affordable housing, has continued to evolve and has grown to meet our members' needs over the past four decades.

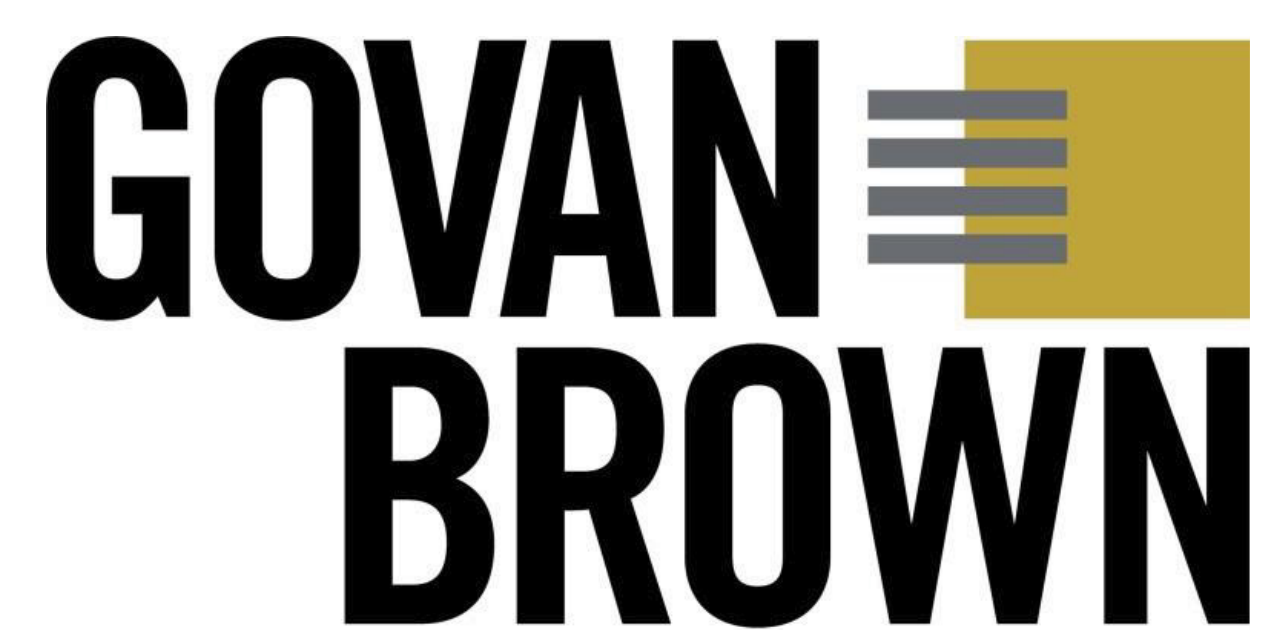
Support Services Provided by PARC

PARC works with people who live with mental health and substance use challenges. They may also struggle with issues related to poverty such as houselessness and food insecurity. We run a drop-in centre with social, art and recreation activities, and offer a wide range of services and programs including housing, financial, employment and outreach support. The simple act of walking through our doors is what makes a person a PARC member – choosing to give back, create and grow is how members contribute and build community.



Project partners

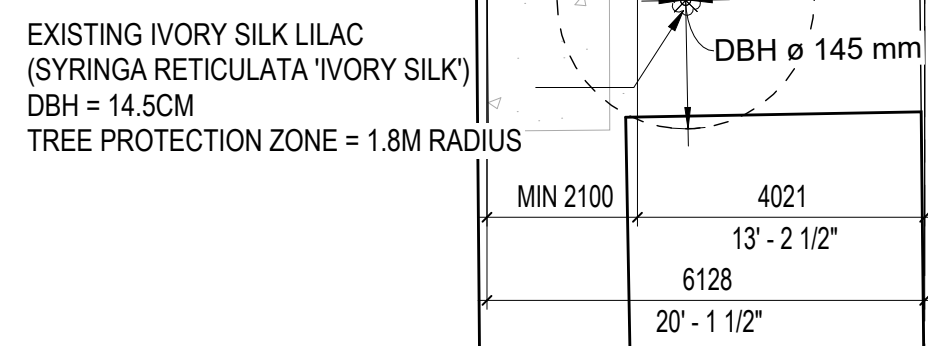
Supporting the wellbeing of residents



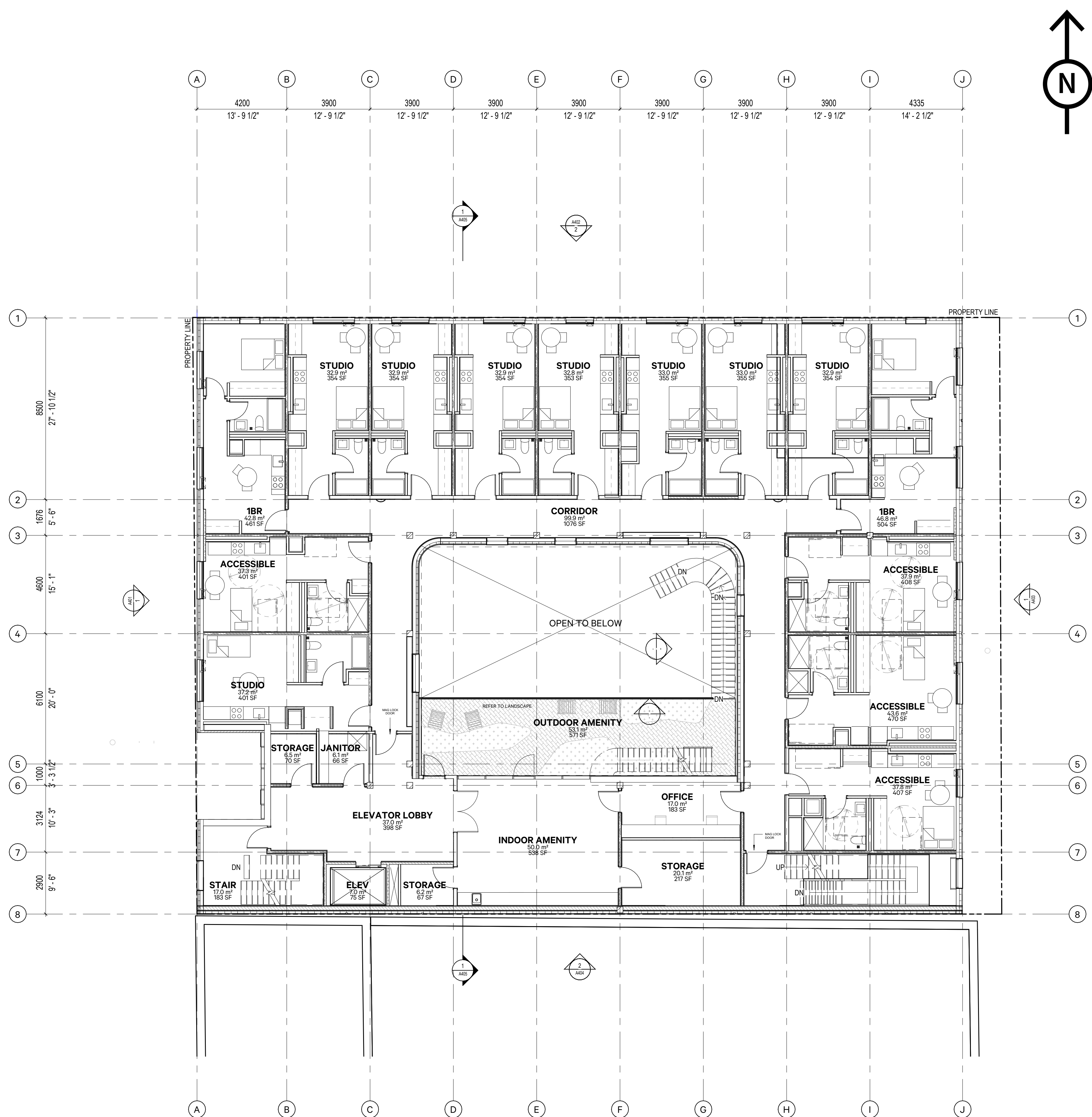
Govan Brown and Associates Ltd.
Construction Manager



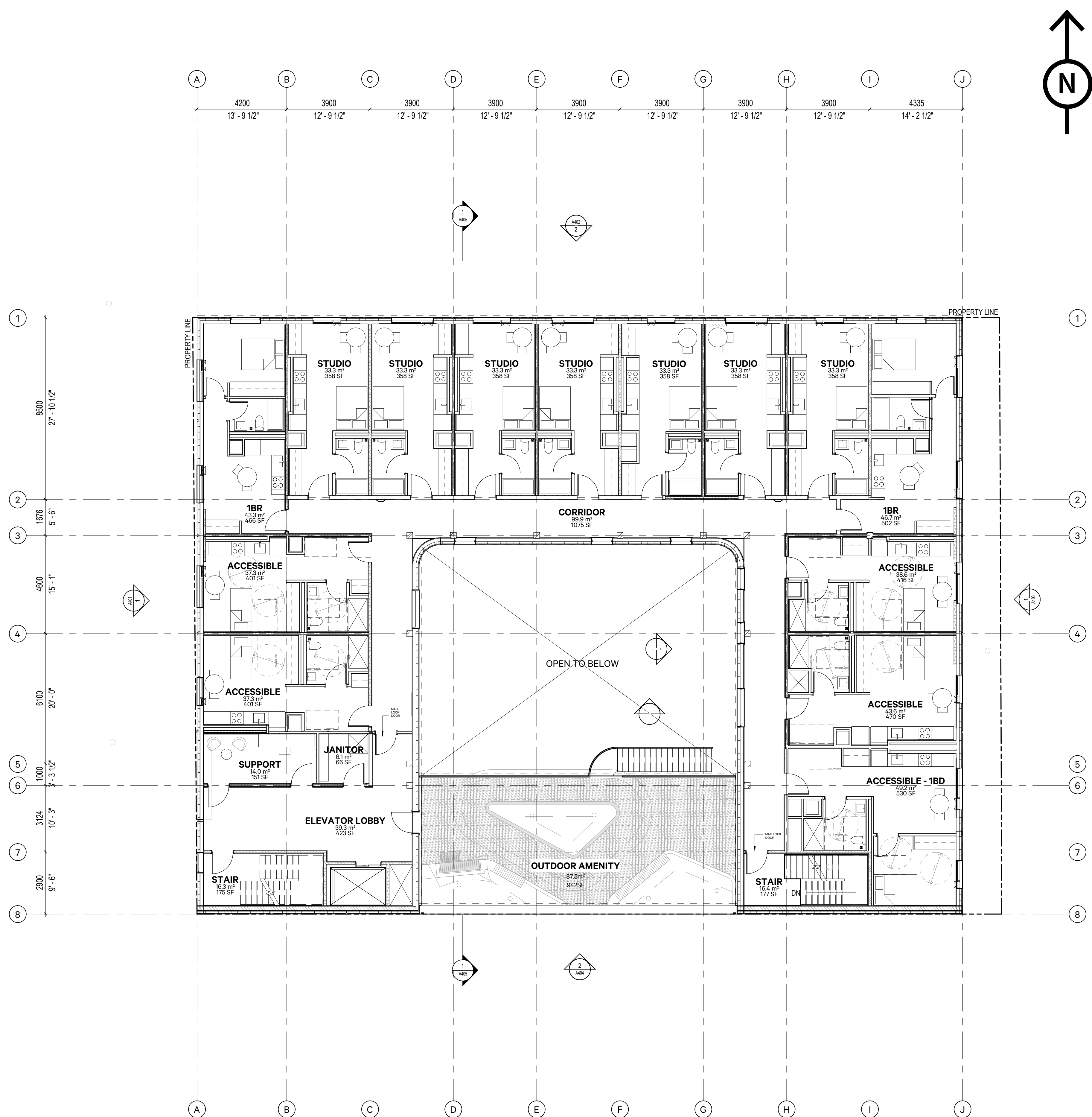
SvN Architects + Planners
Architecture and Landscape



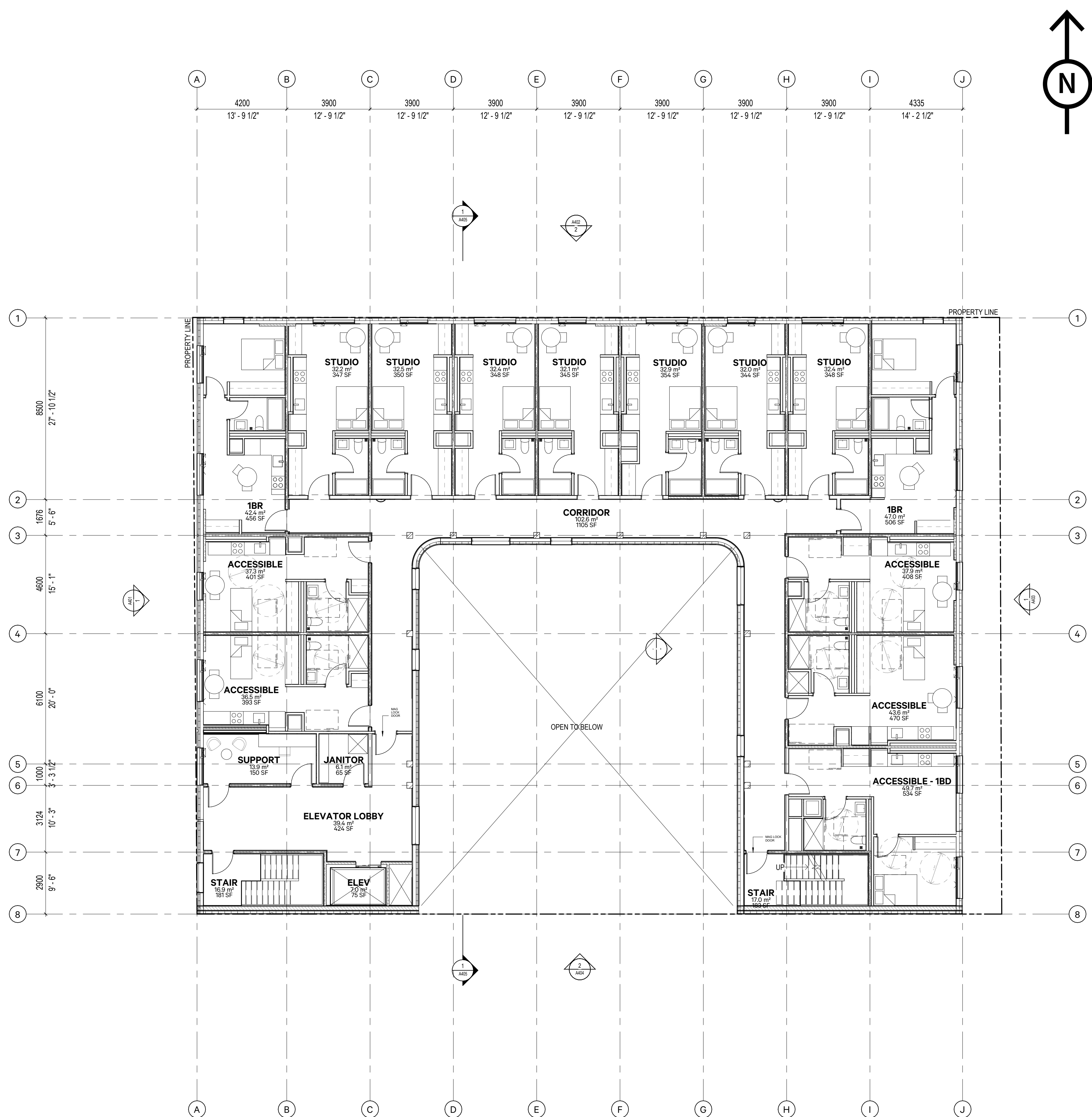
11 Brock Ave.
Level 2 floor plan



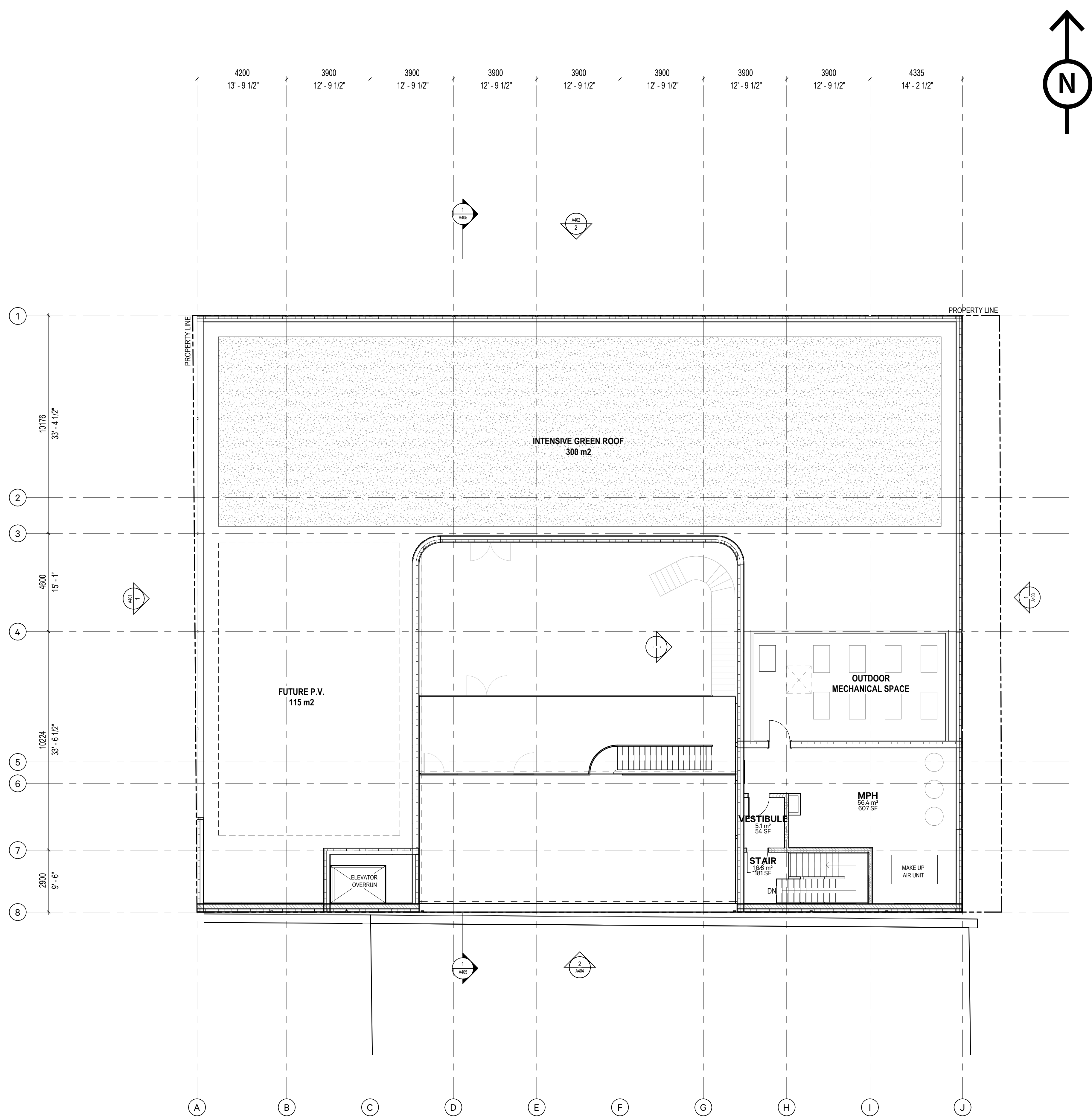
11 Brock Ave.
Level 3 floor plan



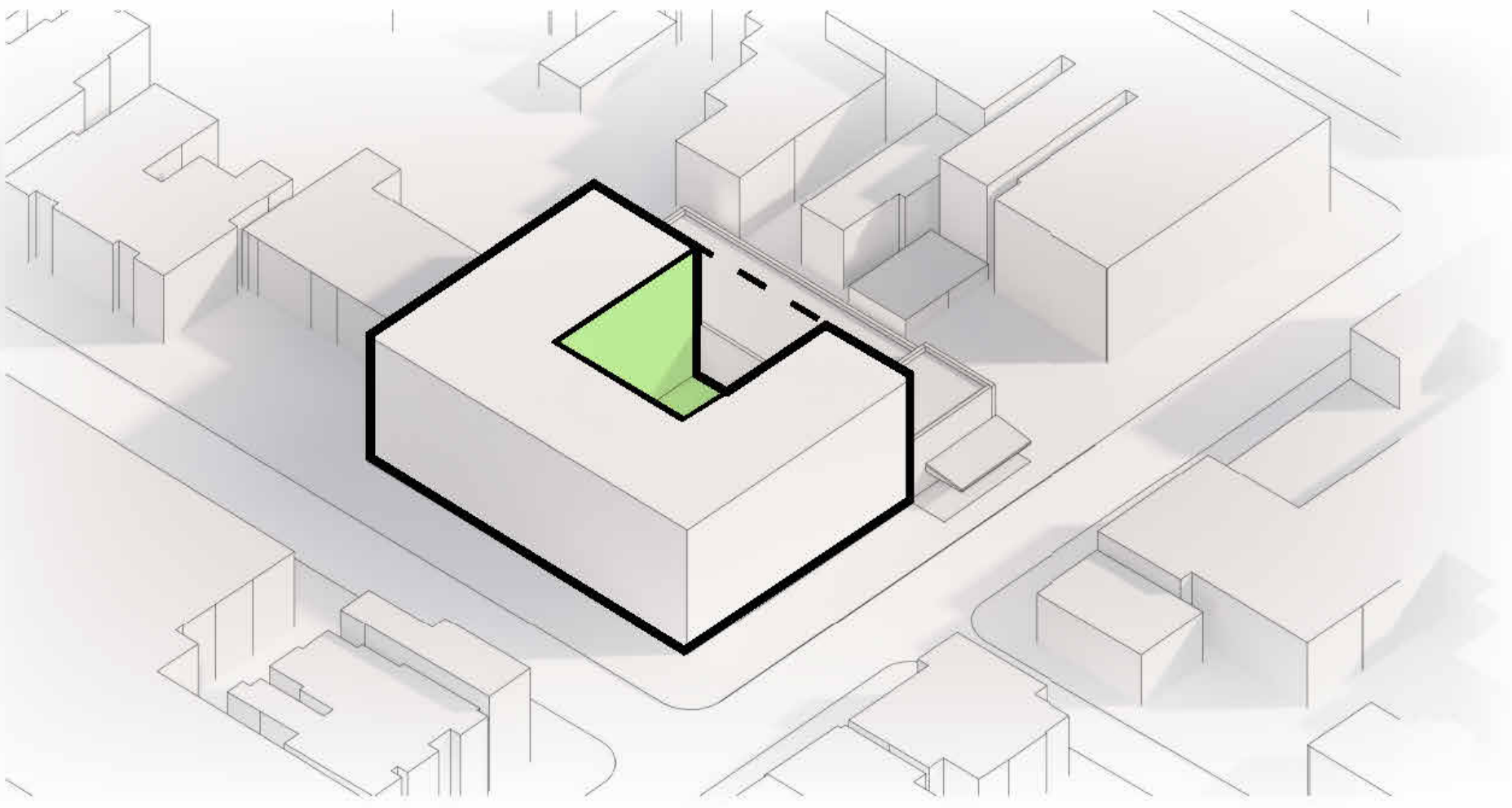
11 Brock Ave.
Level 4 floor plan



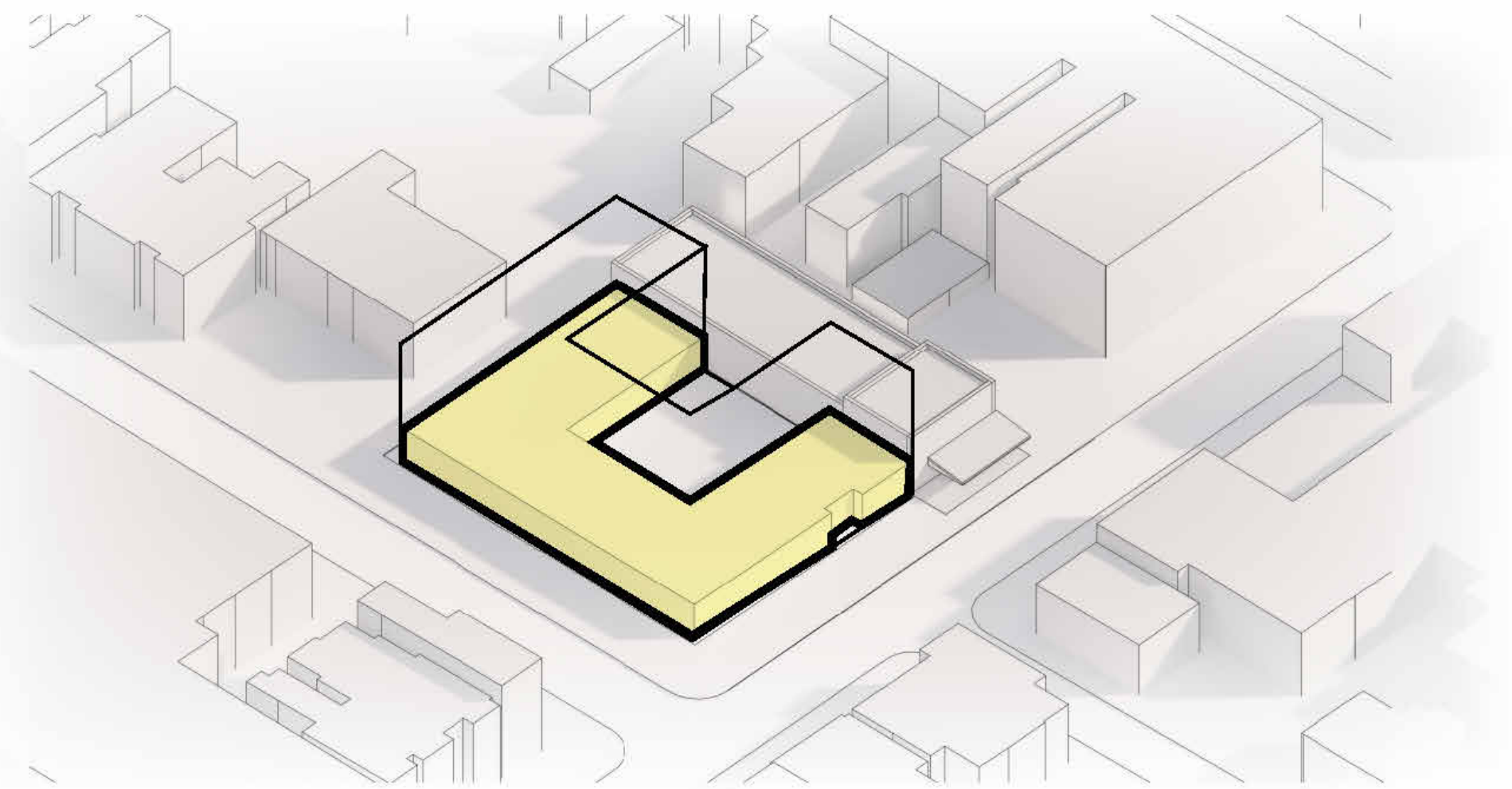
11 Brock Ave.
Roof floor plan



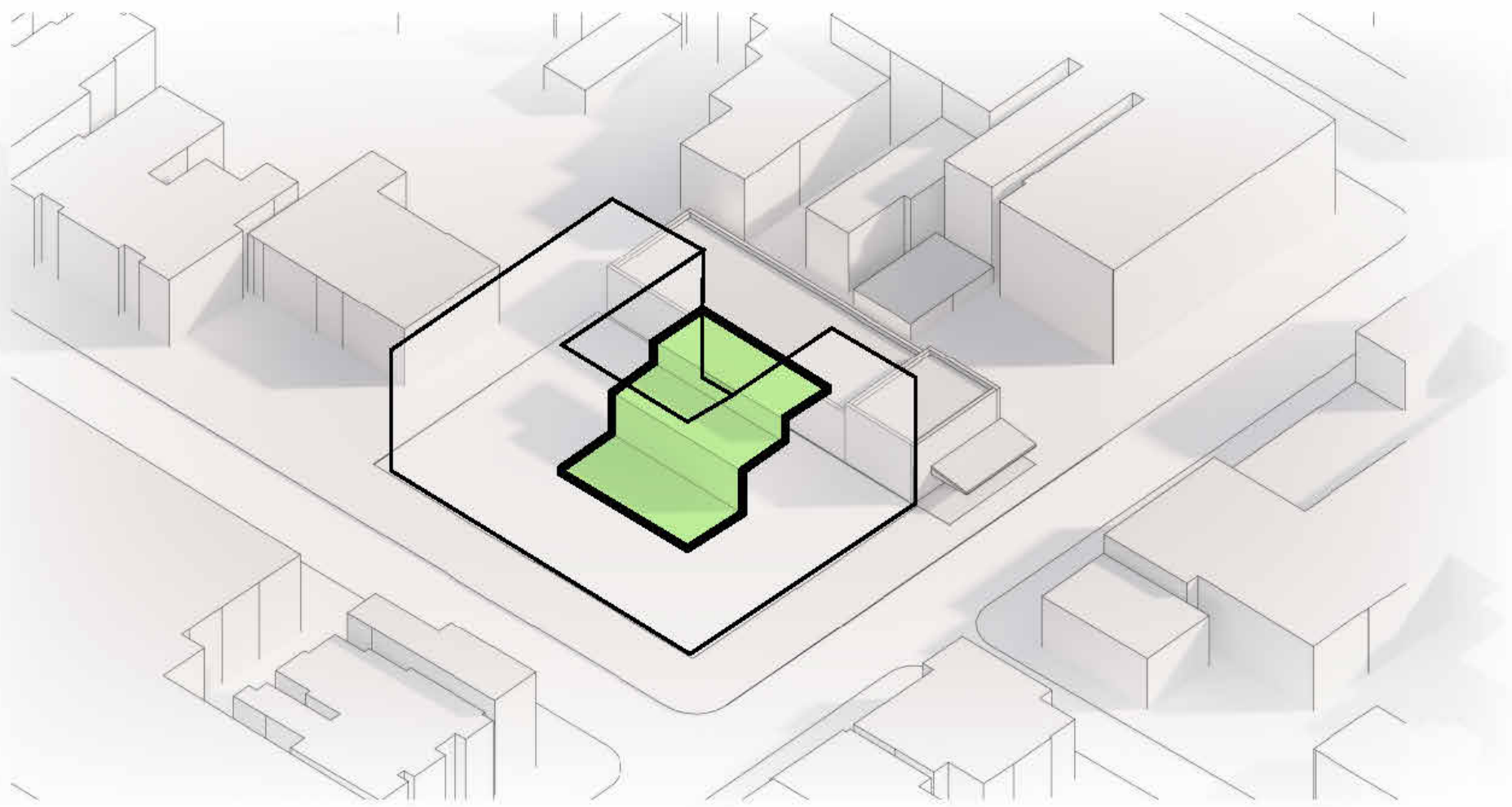
11 Brock Ave. Design features



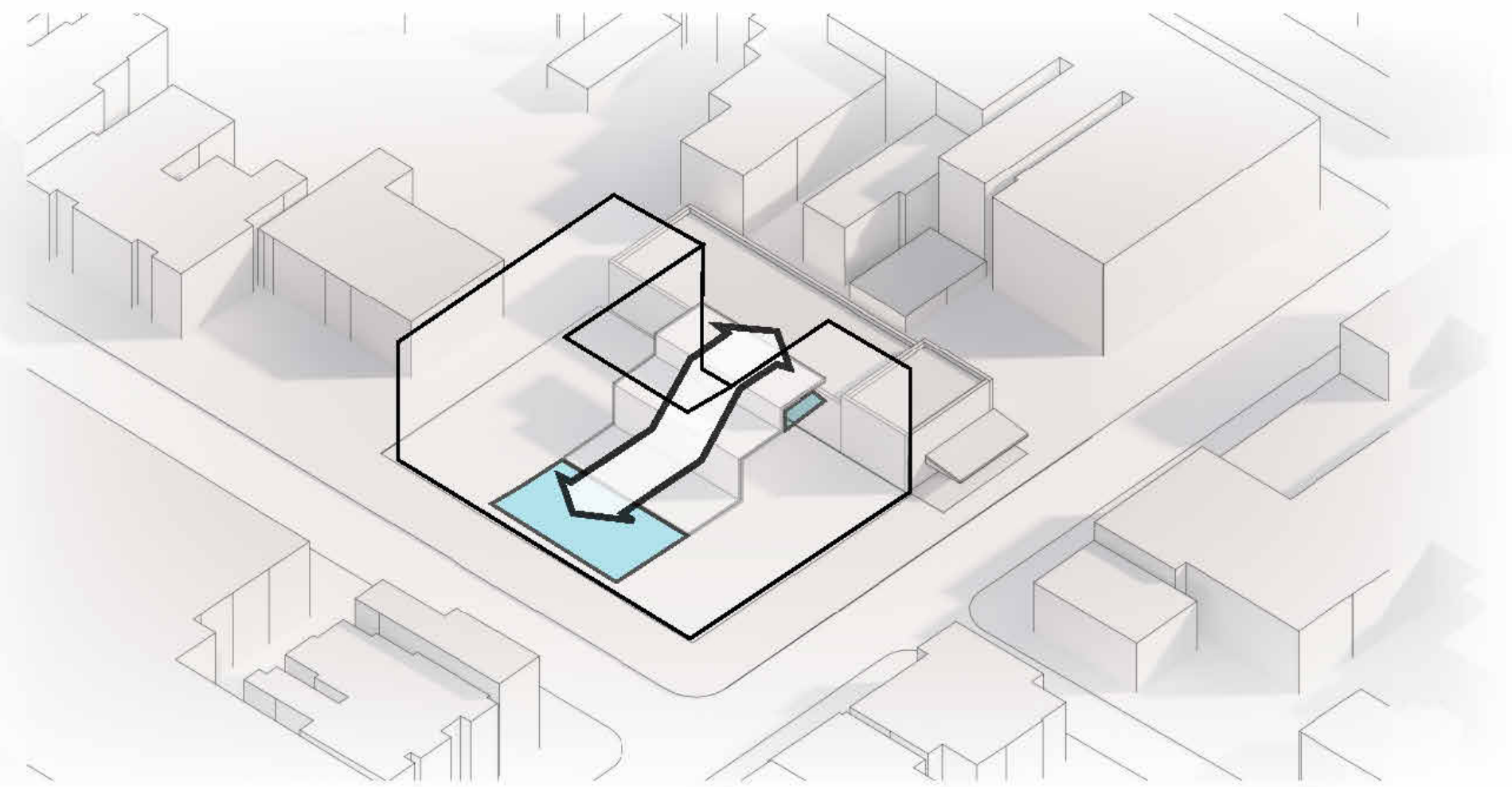
A south-facing courtyard brings light into the middle



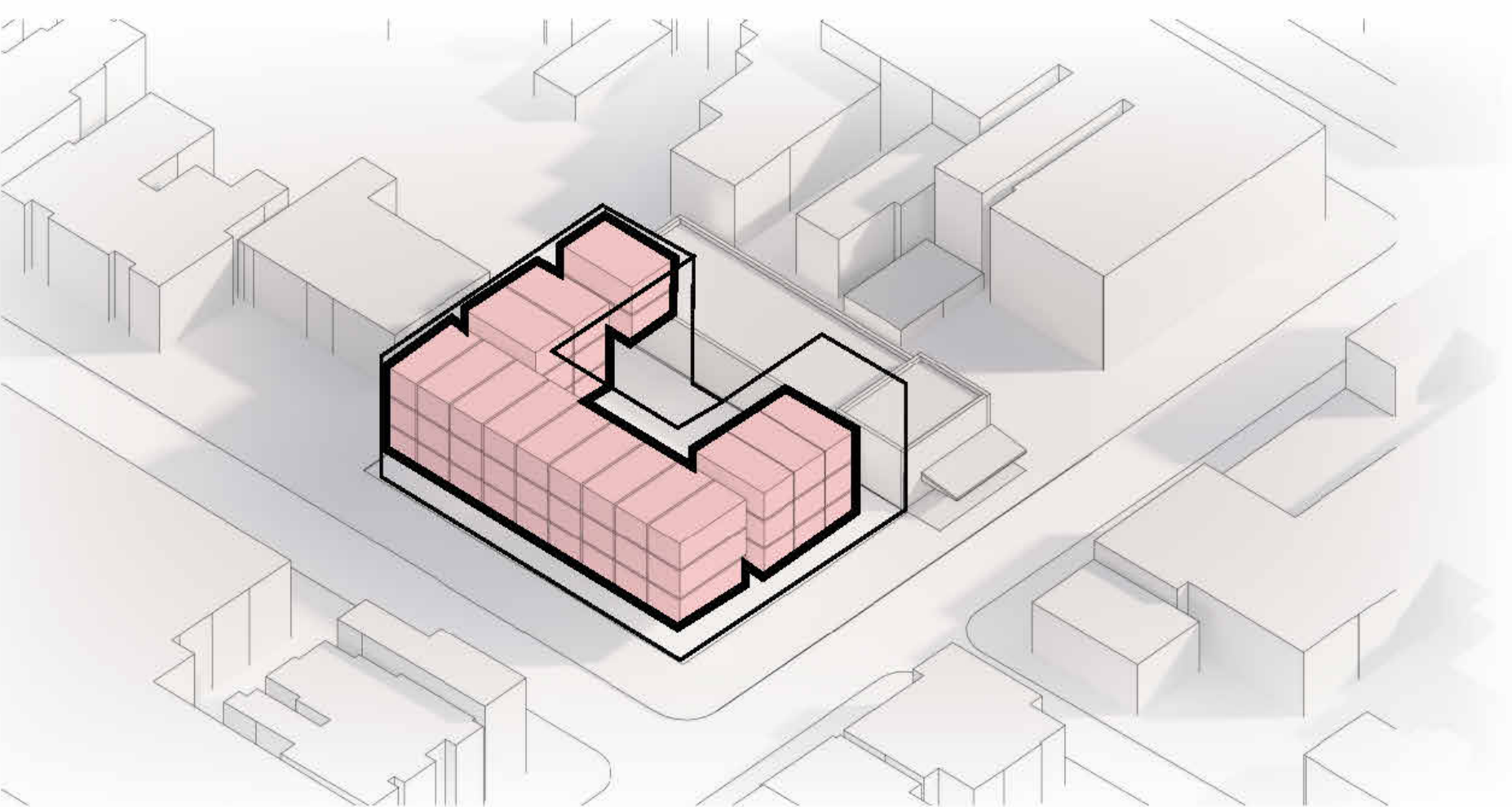
The ground floor includes communal and support spaces



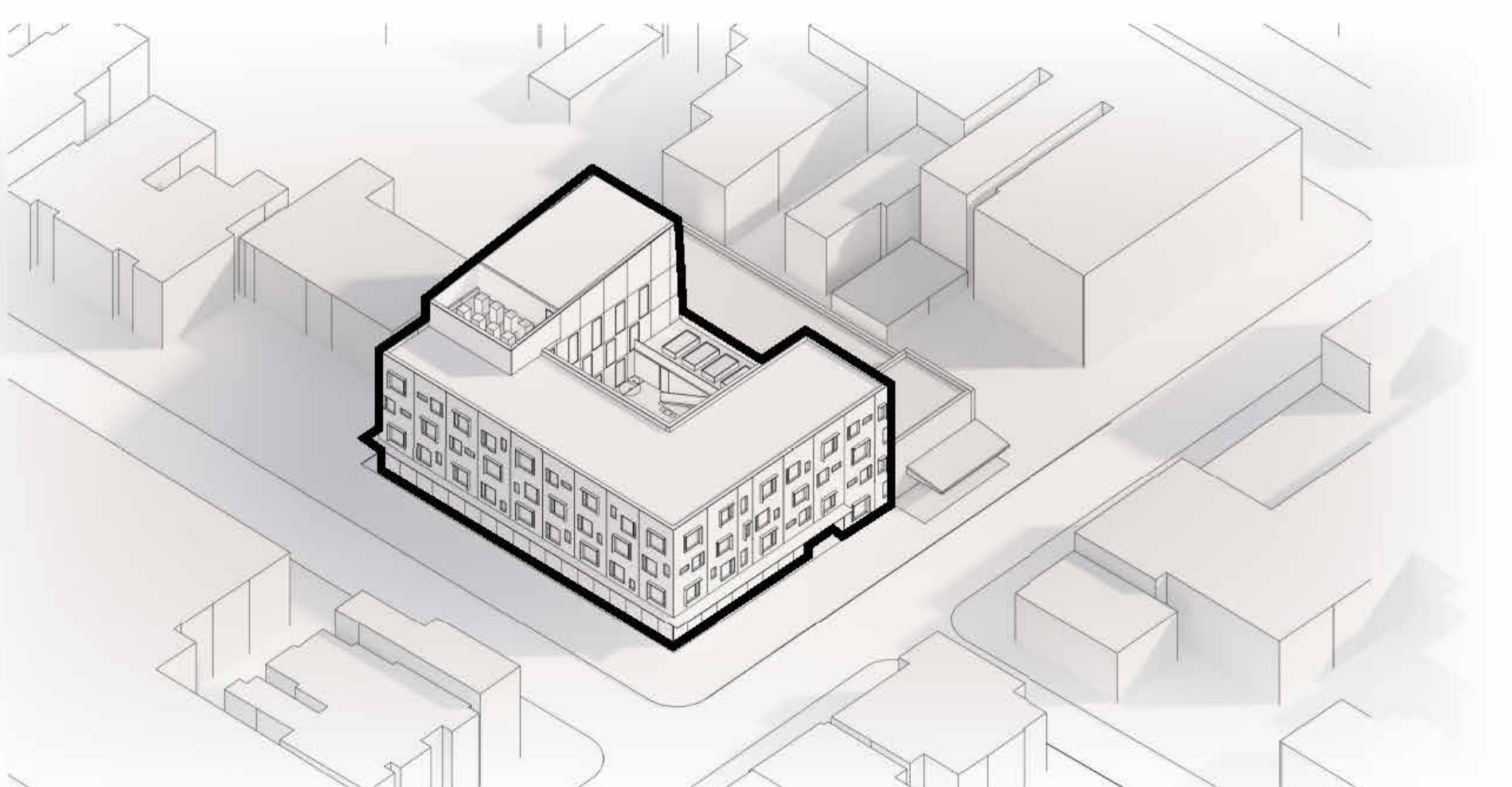
Terraces on each level create a multi-tiered outdoor amenity



Indoor and outdoor amenity spaces are linked together

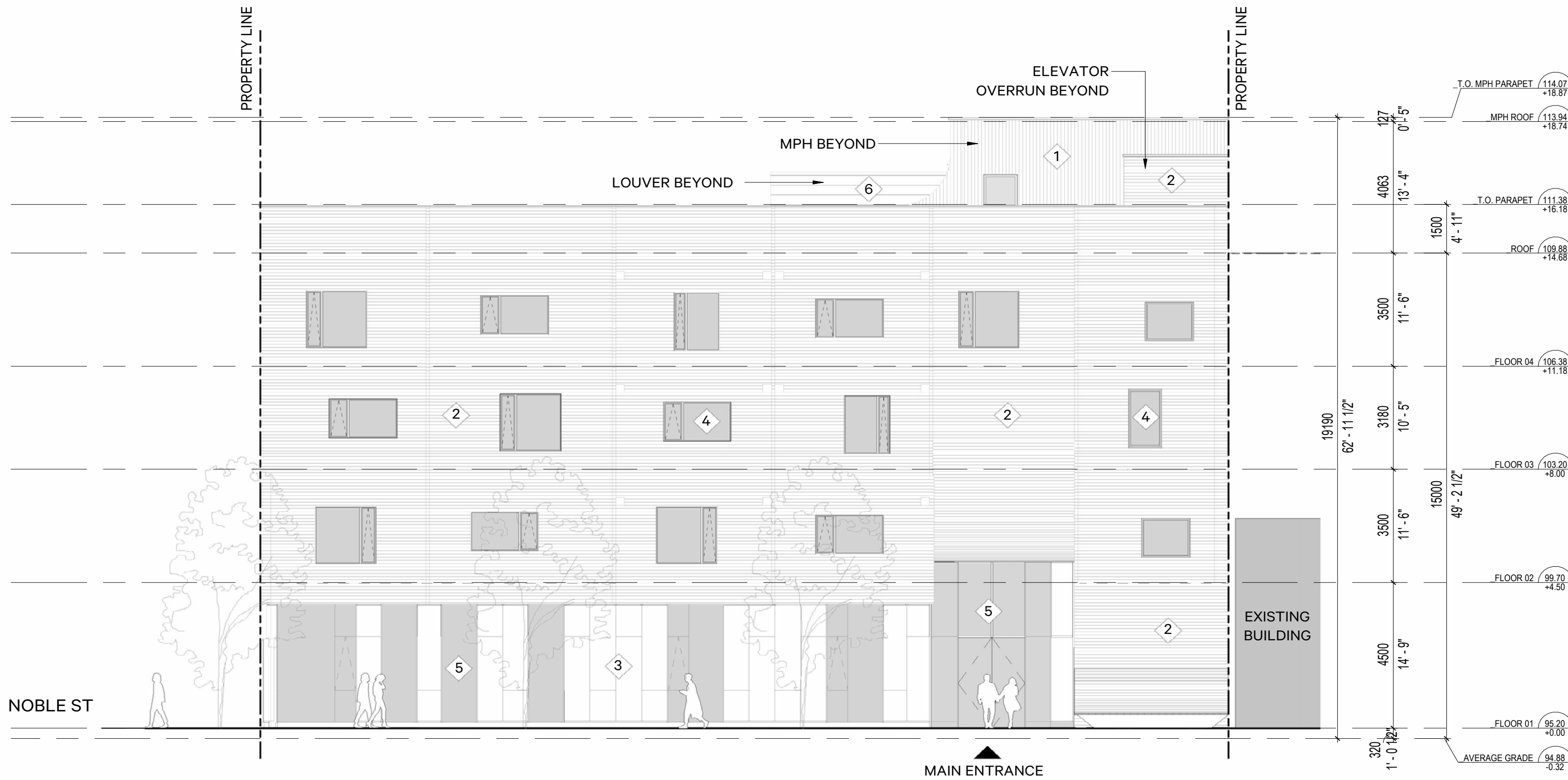


Residential units are stacked for efficiency

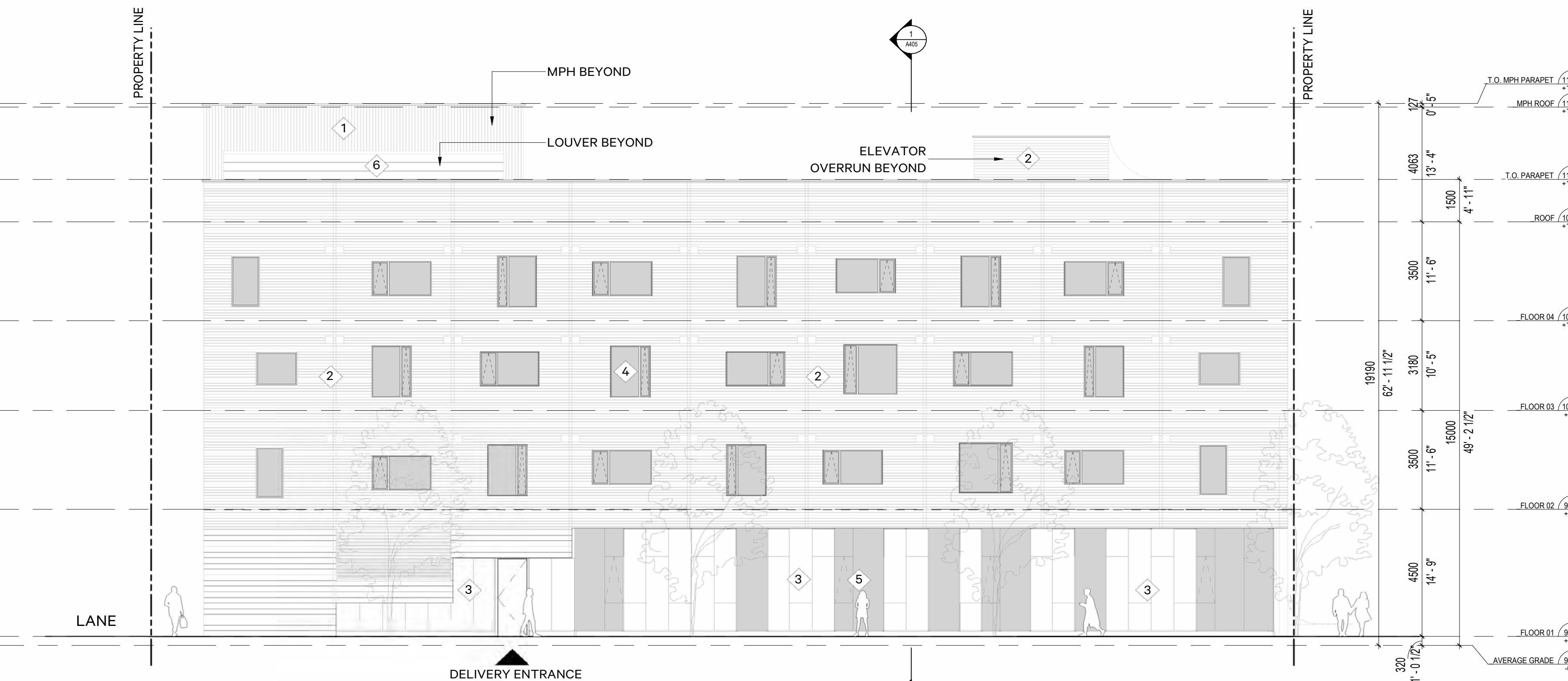


Distinctive facade responds to the character of the neighbourhood

11 Brock Ave.
Architectural elevation design

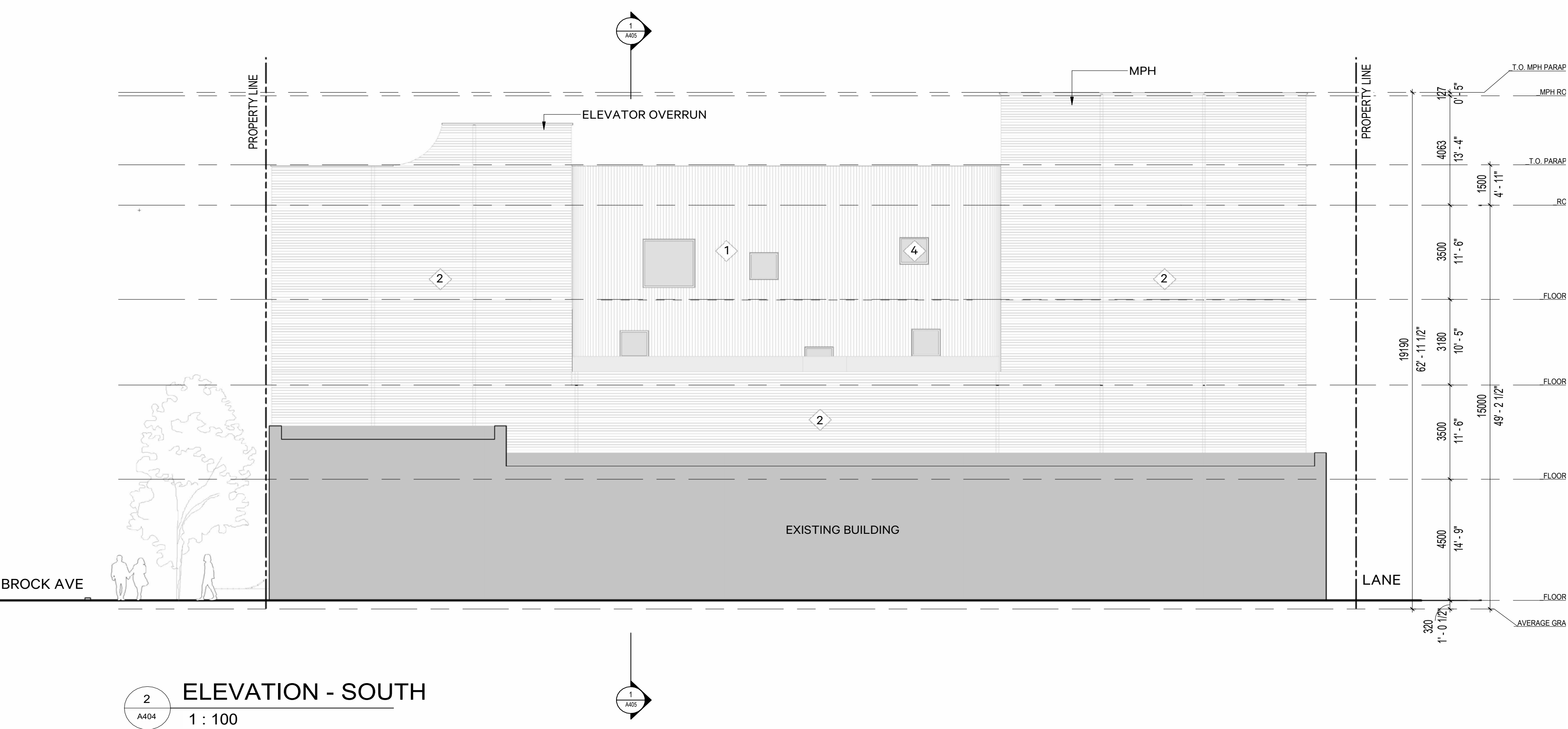


1 ELEVATION - WEST
A401 1 : 100



2 ELEVATION - NORTH
A402 1 : 100

11 Brock Ave.
Architectural elevation design



11 Brock Ave. Building features: Exterior



Views of proposed building from Brock Ave.

Images are preliminary artist's renderings

11 Brock Ave.
Building features: Interior



Section view of proposed building from Brock Ave.

Images are preliminary artist's renderings

Moving forward at 11 Brock Ave.

The City of Toronto has received funding through the Government of Canada's Rapid Housing Initiative (RHI) to develop this building. The City is working quickly towards construction to provide new homes as soon as possible.



Dates in the timeline are approximate and subject to change.

If you have a question about this housing development or would like to speak with someone directly, please reach out to:

Community Liaison

 Phone: 437-684-5857

 Email: communityliaison@bigideaspace.ca

Councillor Perks

 Phone: 416-392-7919

 Email: councillor_perks@toronto.ca

Updates about this project will be posted to the housing development website:
[Toronto.ca/11Brock](https://toronto.ca/11Brock)