

| Potentially Contaminating Activities (PCAs):                             |   |   |
|--|---|---|
| POTENTIALLY CONTAMINATING ACTIVITY (PCA)                                 | LOCATION  | PCA DESCRIPTION   |
| IN/ON/UNDER THE STUDY AREA   |   |   |
| PCA 1 Item-30: Importation of fill material of unknown quality           | The Site  | Fill materials associated with historical development/use of the Site |
| PCA 74 Item -10: Commercial autobody shops                               | 4800 Sheppard Ave E, approximately 60m North of Sheppard Ave E  | An autobody shop noted during the site visit                          |
| PCA 75 Item -10: Commercial autobody shops                               | 4910 Sheppard Ave E, approximately 50m North of Sheppard Ave E  | An autobody shop noted during the site visit                          |
| PCA 76 Item -39: Paints Manufacturing Processing and Bulk Storage        | 4910 Sheppard Ave, approximately 50m North of Sheppard Ave E    | A paint store noted during the site visit                             |
| PCA 77 Item -39: Paints Manufacturing Processing and Bulk Storage        | 4900 Sheppard Ave E, approximately 50m North of Sheppard Ave E  | A paint store noted during the site visit                             |
| PCA 78 Item -10: Commercial autobody shops                               | 4900 Sheppard Ave E, approximately 50m North of Sheppard Ave E  | An autobody shop noted during the site visit                          |
| PCA 79 Item -10: Commercial autobody shops                               | 4960 Sheppard Ave E, approximately 50m North of Sheppard Ave E  | An autobody shop noted during the site visit                          |
| PCA 80 Item -10: Commercial autobody shops                               | 5000 Sheppard Ave E, approximately 100m North of Sheppard Ave E | An autobody shop noted during the site visit                          |
| PCA 81 Item -10: Commercial autobody shops                               | 5060 Sheppard Ave E, approximately 60m North of Sheppard Ave E  | An autobody shop noted during the site visit                          |
| PCA 82 Item -28: Gasoline and associated products storage in fixed tanks | 4901 Sheppard Ave E, approximately 30m South of Sheppard Ave E  | A gas station noted during the site visit                             |

NOTE: The PCA numbers are in accordance with Table 2, Schedule D, Ontario Regulation 153/04 (amended ).

REFERENCE:  
THIS FIGURE WAS PREPARED FROM GOOGLE EARTH IMAGERY DATED 2021.

- LEGEND:
- THE SITE
  - 250 m BOUNDARY (THE STUDY AREA)
  - POTENTIALLY CONTAMINATING ACTIVITY (PCA)

HDR CORPORATION

PHASE ONE ENVIRONMENTAL SITE ASSESSMENT

Proposed Eglinton East LRT Project, Scarborough, Ontario

POTENTIALLY CONTAMINATING ACTIVITIES (PCAs)  
ON THE SITE AND WITHIN THE STUDY AREA

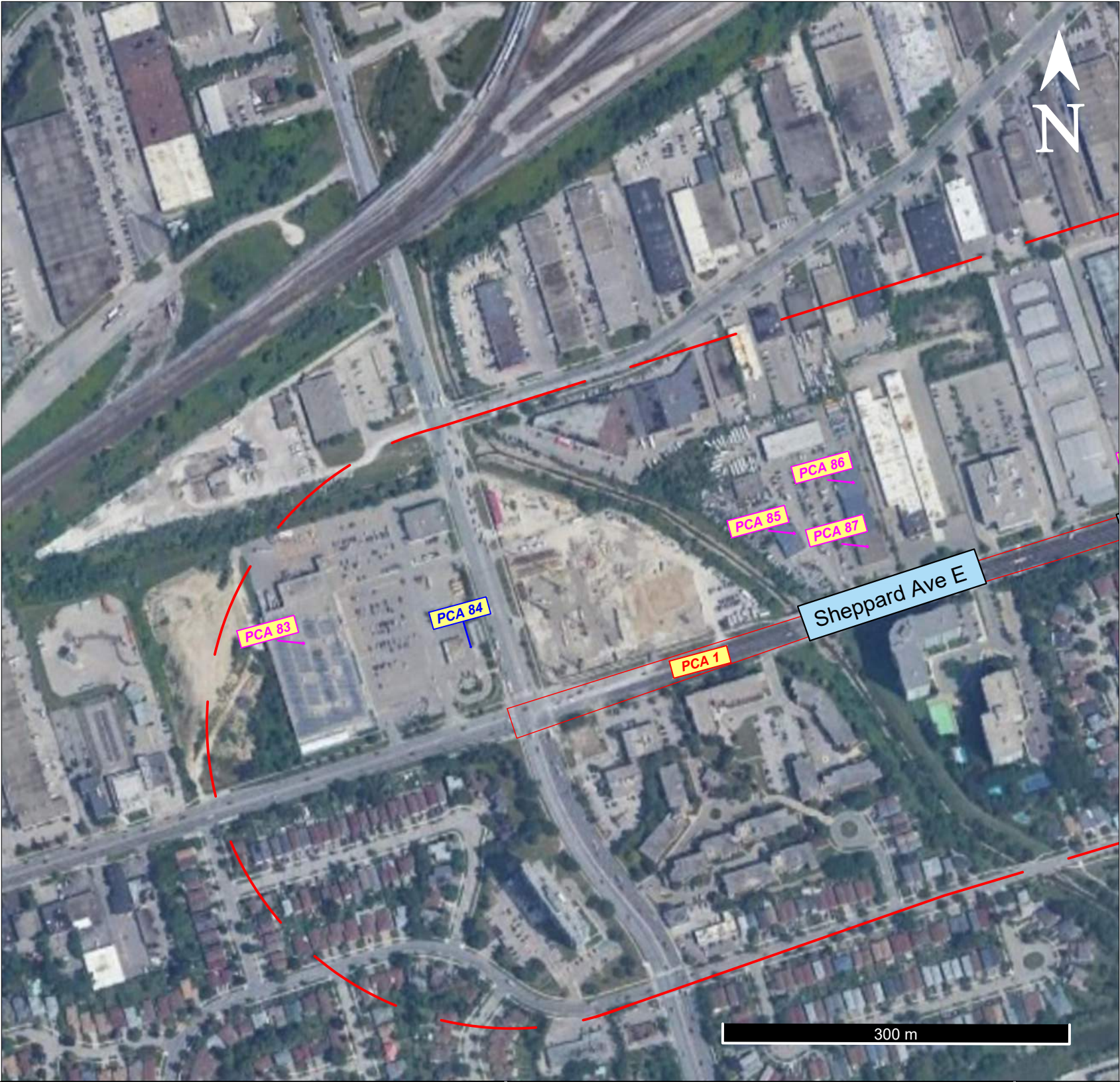
PML

Peto MacCallum Ltd.

CONSULTING ENGINEERS

|          |           |                |          |          |          |
|----------|-----------|----------------|----------|----------|----------|
| DRAWN    | A.S./K.T. | DATE           | SCALE    | PML REF. | DWG. NO. |
| CHECKED  | S.T       | SEPTEMBER 2023 | AS SHOWN | 23TX013  | 1-J      |
| APPROVED | M.A.      |                |          |          |          |





Potentially Contaminating Activities (PCAs):

| POTENTIALLY CONTAMINATING ACTIVITY (PCA)                                  | LOCATION  | PCA DESCRIPTION   |
|---|---|---|
| IN/ON/UNDER THE STUDY AREA  |   |   |
| PCA 1 Item-30: Importation of fill material of unknown quality            | The Site  | Fill materials associated with historical development/use of the Site |
| PCA 83 Item -10: Commercial autobody shops                                | 4630 Sheppard Ave E, approximately 90m North of Sheppard Ave E  | An autobody shop noted during the site visit                          |
| PCA 84 Item -28: Gasoline and associated products storage in fixed tanks. | 4650 Sheppard Ave E, approximately 70m North of Sheppard Ave E  | A gas station noted during the site visit                             |
| PCA 85 Item -10: Commercial autobody shops                                | 4730 Sheppard Ave E, approximately 130m North of Sheppard Ave E | An autobody shop noted during the site visit                          |
| PCA 86 Item -10: Commercial autobody shops                                | 4736 Sheppard Ave E, approximately 90m North of Sheppard Ave E  | An autobody shop noted during the site visit                          |
| PCA 87 Item -10: Commercial autobody shops                                | 4732 Sheppard Ave E, approximately 40m North of Sheppard Ave E  | An autobody shop noted during the site visit                          |

NOTE: The PCA numbers are in accordance with Table 2, Schedule D, Ontario Regulation 153/04 (amended ).

REFERENCE:  
THIS FIGURE WAS PREPARED FROM GOOGLE EARTH IMAGERY DATED 2021.

- LEGEND:
- THE SITE
  - 250 m BOUNDARY (THE STUDY AREA)
  - POTENTIALLY CONTAMINATING ACTIVITY (PCA)

HDR CORPORATION

PHASE ONE ENVIRONMENTAL SITE ASSESSMENT

Proposed Eglinton East LRT Project, Scarborough, Ontario

POTENTIALLY CONTAMINATING ACTIVITIES (PCAs)  
ON THE SITE AND WITHIN THE STUDY AREA

PML

Peto MacCallum Ltd.

CONSULTING ENGINEERS

|          |           |                 |          |          |          |
|----------|-----------|-----------------|----------|----------|----------|
| DRAWN    | A.S./K.T. | DATE            | SCALE    | PML REF. | DWG. NO. |
| CHECKED  | S.T       | SEPTEMEBER 2023 | AS SHOWN | 23TX013  | 1-K      |
| APPROVED | M.A.      |                 |          |          |          |





Potentially Contaminating Activities (PCAs):

| POTENTIALLY CONTAMINATING ACTIVITY (PCA)  | LOCATION  | PCA DESCRIPTION  |
|---|---|--|
| IN/ON/UNDER THE STUDY AREA  |   |  |
| PCA 1 Item-30: Importation of fill material of unknown quality  | The Site  | Fill materials associated with historical development/use of the Site        |
| PCA 88 Item -19: Electronic and Computer Equipment Manufacturing  | 8150 Sheppard Ave E, approximately 30m North of Sheppard Ave E      | An electronic manufacturing company was noted during the Site visit          |
| PCA 89 Item -58: Waste Disposal and Waste Management, including thermal treatment, landfilling and transfer of waste, other than use of biosoils as soil conditioners | 45 Thornmount Drive, approximately 60m West of Thornmount Drive     | A recycling centre was noted during the Site visit                           |
| PCA 90 Item -48: Salt Manufacturing, Processing and Bulk Storage  | 8270 Sheppard Ave E, approximately 12m East of Thornmount Drive     | A salt dome was noted during the Site visit                                  |
| PCA 91 Item -5: Asphalt and Bitumen Manufacturing   | 8800 Sheppard Ave E, approximately 30m North of Sheppard Ave E      | An asphalt manufacturing and research centre was noted during the Site visit |
| PCA 92 Item -10: Commercial autobody shops  | 35 Auto Mall Drive, approximately 130m South of Sheppard Ave E      | Autobody shop noted during the Site visit                                    |
| PCA 93 Item -28: Gasoline and associated products storage in fixed tanks  | 8301 Sheppard Ave E, approximately 20m South of Sheppard Ave E      | A gas station was noted during the Site visit                                |
| PCA 94 Item -10: Commercial autobody shops  | 70 Grand Marshall Drive, approximately 75 m South of Sheppard Ave E | Autobody shop noted during the Site visit                                    |
| PCA 95 Item -28: Gasoline and associated products storage in fixed tanks  | 8301 Sheppard Ave E, approximately 20m South of Sheppard Ave E      | Suspected AST was noted during the Site visit                                |

NOTE: The PCA numbers are in accordance with Table 2, Schedule D, Ontario Regulation 153/04 (amended ).

REFERENCE:  
THIS FIGURE WAS PREPARED FROM GOOGLE EARTH IMAGERY DATED 2021.

LEGEND:

THE SITE

250 m BOUNDARY (THE STUDY AREA)

PCA 30

POTENTIALLY CONTAMINATING ACTIVITY (PCA)

HDR CORPORATION

PHASE ONE ENVIRONMENTAL SITE ASSESSMENT

Proposed Eglinton East LRT Project, Scarborough, Ontario

POTENTIALLY CONTAMINATING ACTIVITIES (PCAs)  
ON THE SITE AND WITHIN THE STUDY AREA

PML

Peto MacCallum Ltd.

CONSULTING ENGINEERS

|          |           |            |          |          |          |
|----------|-----------|------------|----------|----------|----------|
| DRAWN    | A.S./K.T. | DATE       | SCALE    | PML REF. | DWG. NO. |
| CHECKED  | S.T       | MARCH 2024 | AS SHOWN | 23TX013  | 1-L      |
| APPROVED | M.A.      |            |          |          |          |





### Areas of Potential Environmental Concern (APEC):

| Area of Potential Environmental Concern (APEC) | Location of Area of Potential Environmental Concern on Phase One Property | Potentially Contaminating Activity (PCA)                                     | Location of PCA (On-Site or Off-Site) | Contaminants of Potential Concern                   | Media Potentially Impacted (Ground water, soil and/or sediment) |
|--|---|--|---------------------------------------|---|---|
| <i>APEC-1</i>                                  | Entire Site   | PCA 1 Item-30 :Importation of Fill Material of Unknown Quality               | On-Site                               | Metals, hydride forming metals, PAHs, VOCs and PHCs | Soil and ground water   |
| <i>APEC-2</i>                                  | Along the road alignment  | PCA 4 Item-50: Soap and Detergent Manufacturing, Processing and Bulk Storage | Off-Site                              | Metals, hydride forming metals                      | Soil and ground water   |
| <i>APEC-3</i>                                  | Along the road alignment  | PCA 6 Item-28: Gasoline associated products storage in fixed tanks.          | Off-Site                              | Metals, hydride forming metals, PAHs, VOCs and PHCs | Soil and ground water   |
| <i>APEC-4</i>                                  | Along the road alignment  | PCA 5 Item-10: Commercial autobody shops                                     | Off-Site                              | Metals, hydride forming metals, PAHs, VOCs and PHCs | Soil and ground water   |
| <i>APEC-5</i>                                  | Along the road alignment  | PCA 7 Item-50: Soap and Detergent Manufacturing, Processing and Bulk Storage | Off-Site                              | Metals, hydride forming metals                      | Soil and ground water   |

REFERENCE:

THIS FIGURE WAS PREPARED FROM GOOGLE EARTH IMAGERY DATED 2018.

LEGEND:

THE SITE

*APEC 1*

HDR CORPORATION

PHASE ONE ENVIRONMENTAL SITE ASSESSMENT

Proposed Eglinton East LRT Project, Scarborough, Ontario

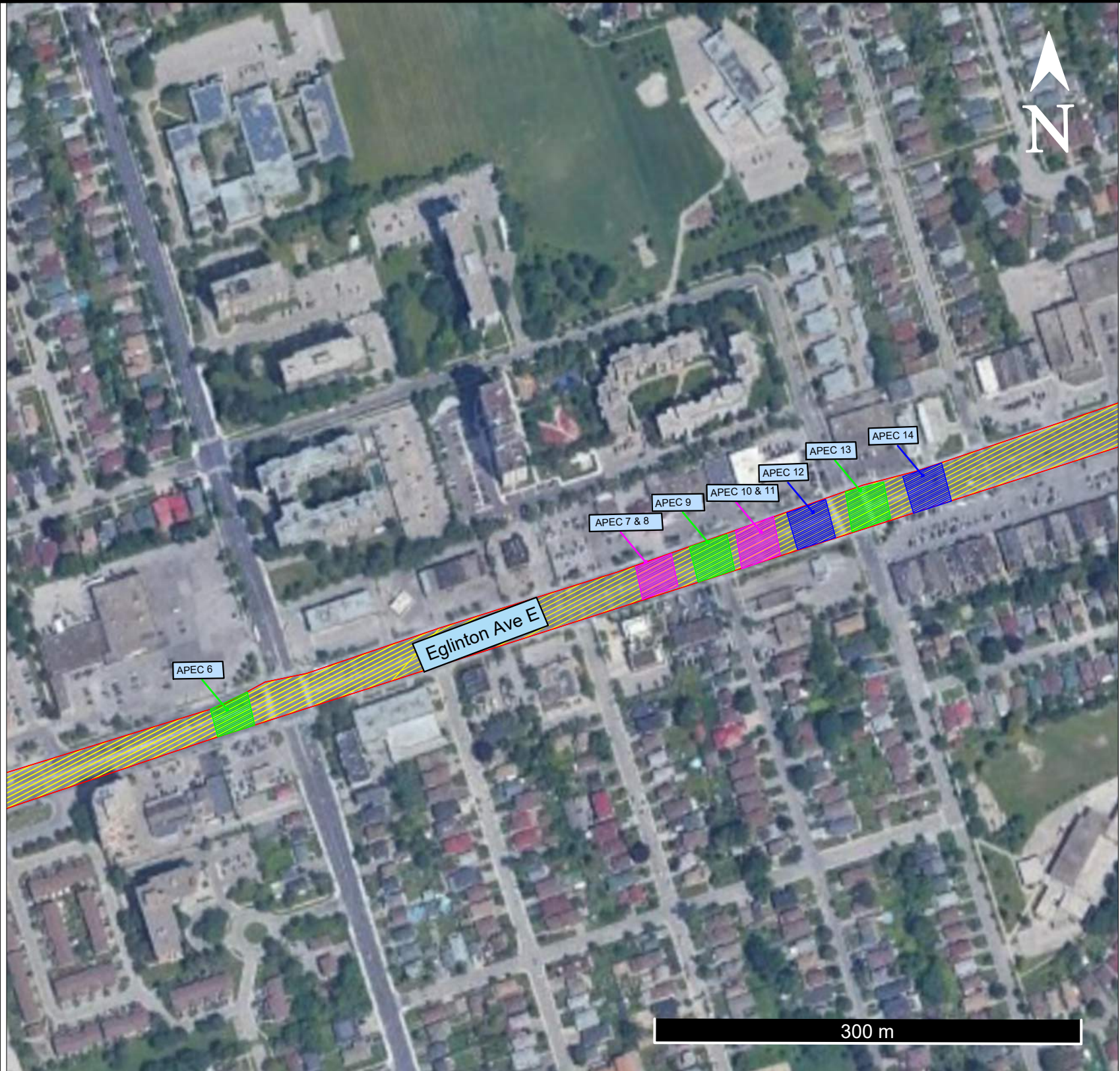
AREAS OF POTENTIAL ENVIRONMENTAL CONCERN (APEC)

**Peto MacCallum Ltd.**

CONSULTING ENGINEERS

|          |           |                |          |          |          |
|----------|-----------|----------------|----------|----------|----------|
| DRAWN    | A.S./K.T. | DATE           | SCALE    | PML REF. | DWG. NO. |
| CHECKED  | S.T.      | SEPTEMBER 2023 | AS SHOWN | 23TX013  | 2-A      |
| APPROVED | M.A.      |                |          |          |          |







Areas of Potential Environmental Concern (APEC):

| Area of Potential Environmental Concern (APEC) | Location of Area of Potential Environmental Concern on Phase One Property | Potentially Contaminating Activity (PCA)                                     | Location of PCA (On-Site or Off-Site) | Contaminants of Potential Concern                   | Media Potentially Impacted (Ground water, soil and/or sediment) |
|--|---|--|---------------------------------------|---|---|
| APEC-6   | Along the road alignment  | PCA 10 Item-50: Soap and Detergent Manufacturing Processing and Bulk Storage | Off-Site                              | Metals, hydride forming metal                       | Soil and ground water   |
| APEC-7 & 8                                     | Along the road alignment  | PCA 16 & 17 Item-10: Commercial autobody shops                               | Off-Site                              | Metals, hydride forming metals, PAHs, VOCs and PHCs | Soil and ground water   |
| APEC-9   | Along the road alignment  | PCA 18 Item-50: Soap and Detergent Manufacturing Processing and Bulk Storage | Off-Site                              | Metals, hydride forming metal                       | Soil and ground water   |
| APEC-10 & 11                                   | Along the road alignment  | PCA 11 & 12 Item-10: Commercial autobody shops                               | Off-Site                              | Metals, hydride forming metals, PAHs, VOCs and PHCs | Soil and ground water   |
| APEC-12  | Along the road alignment  | PCA 20 Item-28: Gasoline and associated products storage in fixed tanks.     | Off-Site                              | Metals, hydride forming metals, PAHs, VOCs and PHCs | Soil and ground water   |
| APEC-13  | Along the road alignment  | PCA 13 Item-50: Soap and Detergent Manufacturing Processing and Bulk Storage | Off-Site                              | Metals, hydride forming metal                       | Soil and ground water   |
| APEC-14  | Along the road alignment  | PCA 14 Item-28: Gasoline and associated products storage in fixed tanks.     | Off-Site                              | Metals, hydride forming metals, PAHs, VOCs and PHCs | Soil and ground water   |

REFERENCE:  
THIS FIGURE WAS PREPARED FROM GOOGLE EARTH IMAGERY DATED 2018.

LEGEND:  
 THE SITE  
 APEC 1

HDR CORPORATION

PHASE ONE ENVIRONMENTAL SITE ASSESSMENT

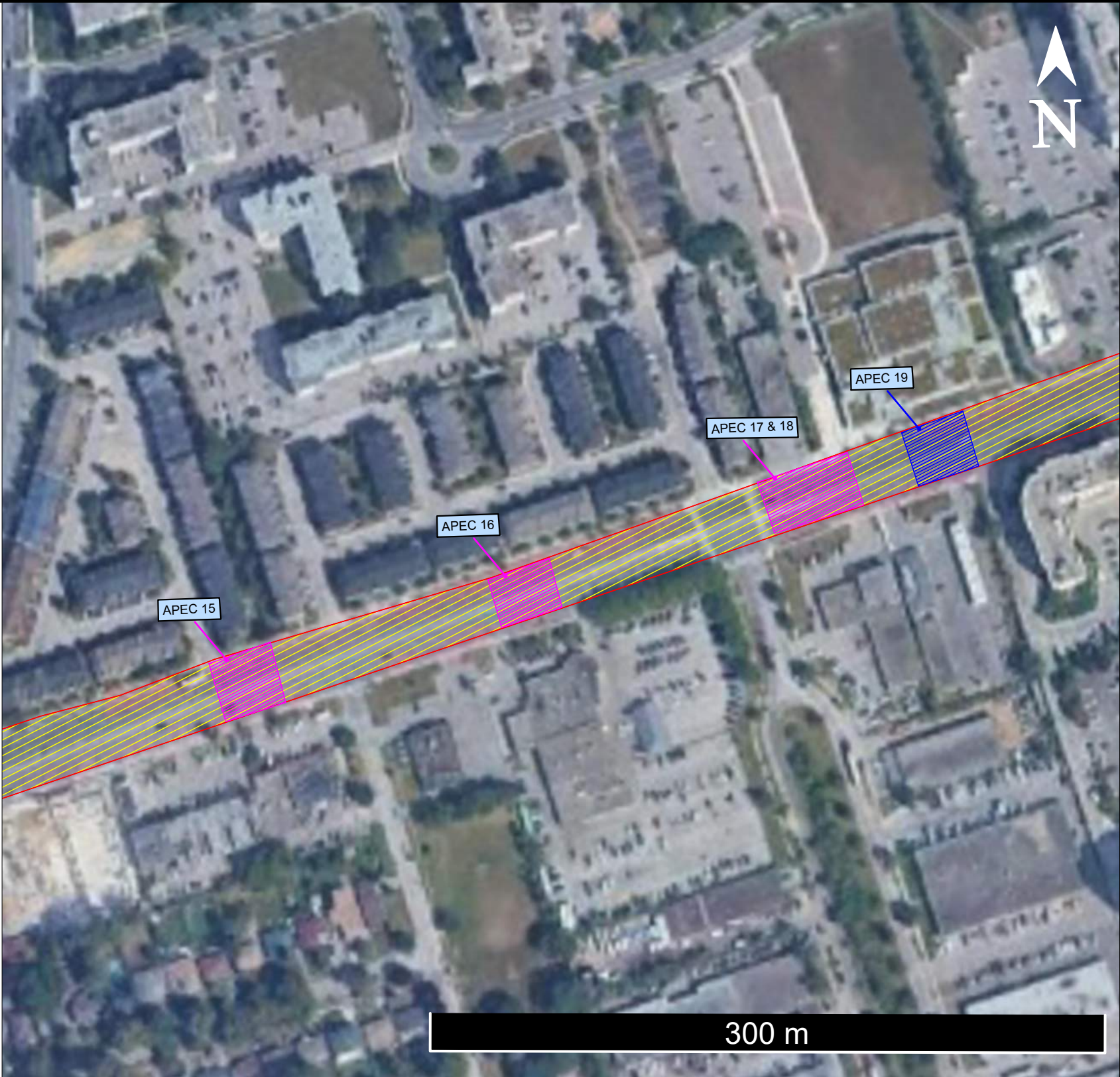
Proposed Eglinton East LRT Project, Scarborough, Ontario

AREAS OF POTENTIAL ENVIRONMENTAL CONCERN (APEC)



|          |           |                |          |          |          |
|----------|-----------|----------------|----------|----------|----------|
| DRAWN    | A.S./K.T. | DATE           | SCALE    | PML REF. | DWG. NO. |
| CHECKED  | S.T.      | SEPTEMBER 2023 | AS SHOWN | 23TX013  | 2-B      |
| APPROVED | M.A.      |                |          |          |          |





Areas of Potential Environmental Concern (APEC):

| Area of Potential Environmental Concern (APEC) | Location of Area of Potential Environmental Concern on Phase One Property | Potentially Contaminating Activity (PCA)                                | Location of PCA (On-Site or Off-Site) | Contaminants of Potential Concern                   | Media Potentially Impacted (Ground water, soil and/or sediment) |
|--|---|---|---------------------------------------|---|---|
| APEC-1   | Entire Site   | PCA 1 Item- 30 Importation of Fill Material of Unknown Quality          | On-Site                               | Metals, hydride forming metals, PAHs, VOCs and PHCs | Soil and ground water   |
| APEC-15  | Along the road alignment  | PCA 29 Item-10: Commercial autobody shops                               | Off-Site                              | Metals, hydride forming metals, PAHs, VOCs and PHCs | Soil and ground water   |
| APEC-16  | Along the road alignment  | PCA 30 Item-10: Commercial autobody shops                               | Off-Site                              | Metals, hydride forming metals, PAHs, VOCs and PHCs | Soil and ground water   |
| APEC-17  | Along the road alignment  | PCA 32 Item-10: Commercial autobody shops                               | Off-Site                              | Metals, hydride forming metals, PAHs, VOCs and PHCs | Soil and ground water   |
| APEC-18  | Along the road alignment  | PCA 22 Item-10: Commercial autobody shops                               | Off-Site                              | Metals, hydride forming metals, PAHs, VOCs and PHCs | Soil and ground water   |
| APEC-19  | Along the road alignment  | PCA 33 Item-28: Gasoline and associated products storage in fixed tanks | Off-Site                              | Metals, hydride forming metals, PAHs, VOCs and PHCs | Soil and ground water   |

REFERENCE:  
THIS FIGURE WAS PREPARED FROM GOOGLE EARTH IMAGERY DATED 2018.

LEGEND:

THE SITE

APEC 1

HDR CORPORATION

PHASE ONE ENVIRONMENTAL SITE ASSESSMENT

Proposed Eglinton East LRT Project, Scarborough, Ontario

AREAS OF POTENTIAL ENVIRONMENTAL CONCERN (APEC)

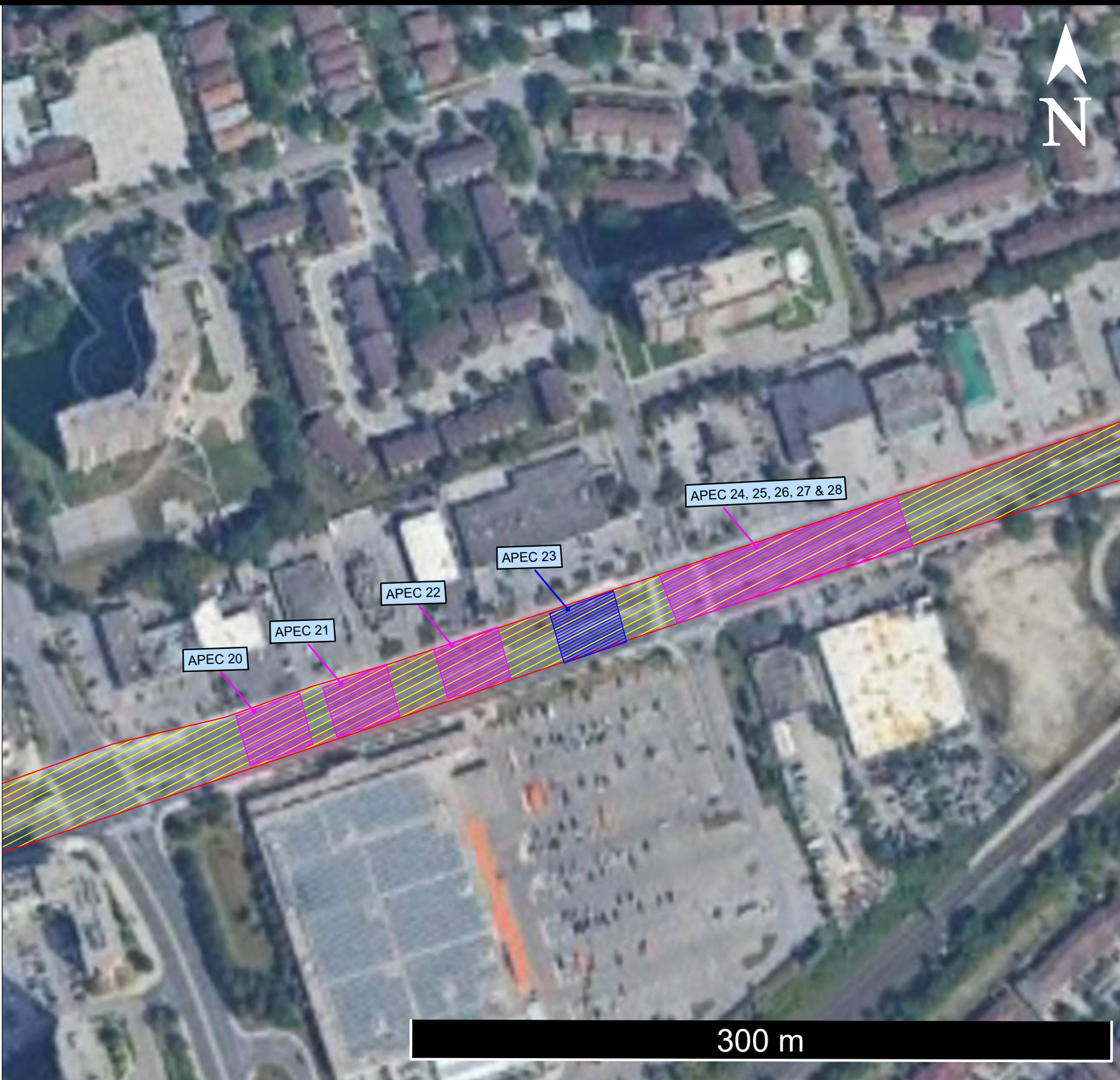
PML

Peto MacCallum Ltd.

CONSULTING ENGINEERS

|          |           |                |          |          |          |
|----------|-----------|----------------|----------|----------|----------|
| DRAWN    | A.S./K.T. | DATE           | SCALE    | PML REF. | DWG. NO. |
| CHECKED  | S.T.      | SEPTEMBER 2023 | AS SHOWN | 23TX013  | 2-C      |
| APPROVED | M.A.      |                |          |          |          |





**Areas of Potential Environmental Concern (APEC):**

| Area of Potential Environmental Concern (APEC) | Location of Area of Potential Environmental Concern on Phase One Property | Potentially Contaminating Activity (PCA)                         | Location of PCA (On-Site or Off-Site) | Contaminants of Potential Concern                   | Media Potentially Impacted (Ground water, soil and/or sediment) |
|--|---|--|---------------------------------------|---|---|
| APEC-1   | Entire Site   | PCA 1 Item-30 :Importation of Fill Material of Unknown Quality   | On-Site                               | Metals, hydride forming metals, PAHs, VOCs and PHCs | Soil and ground water   |
| APEC-20  | Along the road alignment  | PCA 23 Item-10: Commercial autobody shops                        | Off-Site                              | Metals, hydride forming metals, PAHs, VOCs and PHCs | Soil and ground water   |
| APEC-21  | Along the road alignment  | PCA 24 Item-10: Commercial autobody shops                        | Off-Site                              | Metals, hydride forming metals, PAHs, VOCs and PHCs | Soil and ground water   |
| APEC-22  | Along the road alignment  | PCA 25 Item-10: Commercial autobody shops                        | Off-Site                              | Metals, hydride forming metals, PAHs, VOCs and PHCs | Soil and ground water   |
| APEC-23  | Along the road alignment  | PCA 26 Item-39: Paints Manufacturing Processing and Bulk Storage | Off-Site                              | Metals, hydride forming metals and VOCs             | Soil and ground water   |
| APEC-24, 25, 26, 27 & 28                       | Along the road alignment  | PCA 27, 28, 35, 36 & 37 Item-10: Commercial autobody shops       | Off-Site                              | Metals, hydride forming metals, PAHs, VOCs and PHCs | Soil and ground water   |

REFERENCE:  
THIS FIGURE WAS PREPARED FROM GOOGLE EARTH IMAGERY DATED 2018.

LEGEND:

THE SITE

APEC 1

HDR CORPORATION

PHASE ONE ENVIRONMENTAL SITE ASSESSMENT

Proposed Eglinton East LRT Project, Scarborough, Ontario

AREAS OF POTENTIAL ENVIRONMENTAL CONCERN (APEC)

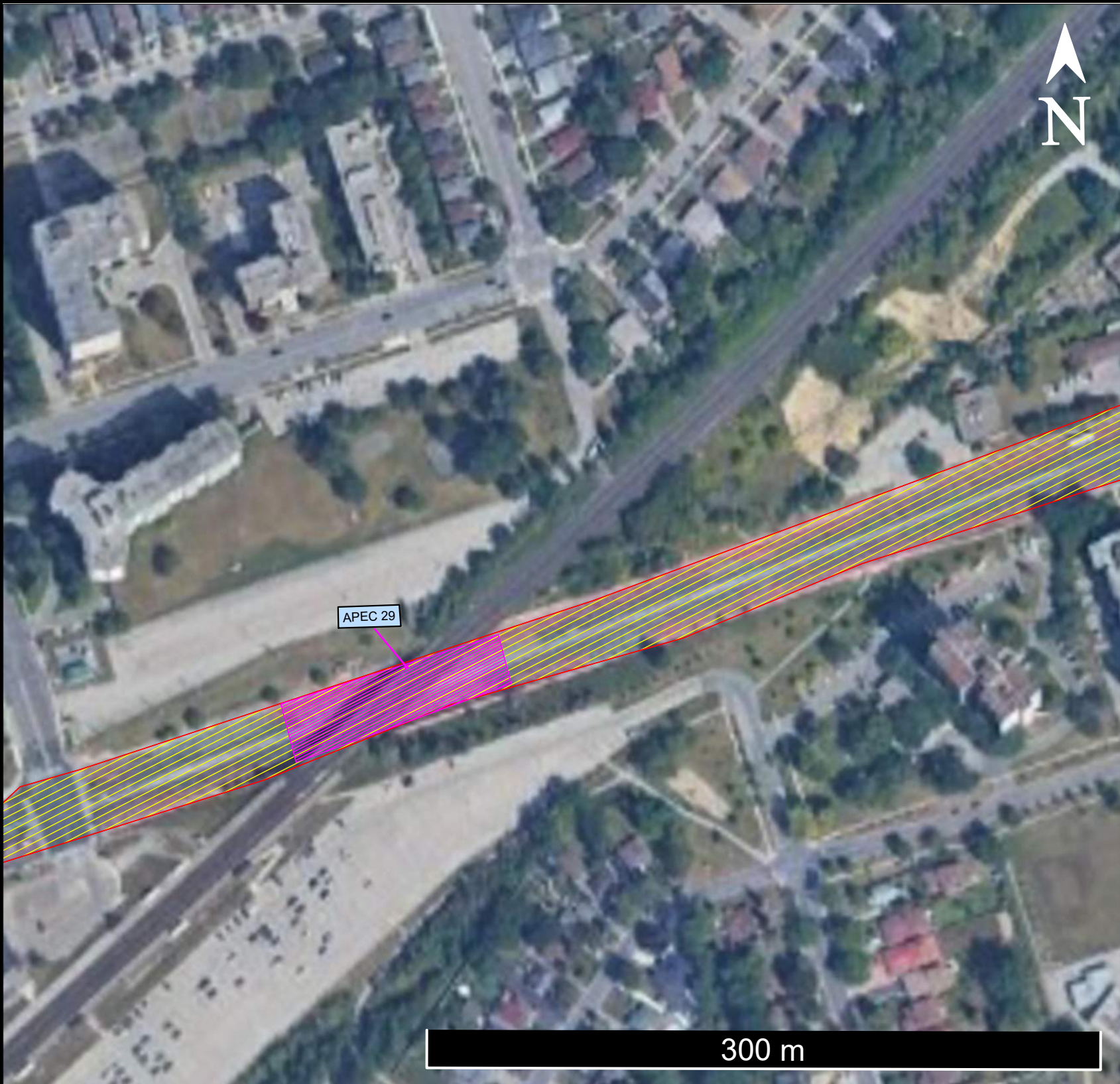
PML

Peto MacCallum Ltd.

CONSULTING ENGINEERS

|          |           |                |          |          |          |
|----------|-----------|----------------|----------|----------|----------|
| DRAWN    | A.S./K.T. | DATE           | SCALE    | PML REF. | DWG. NO. |
| CHECKED  | S.T.      | SEPTEMBER 2023 | AS SHOWN | 23TX013  | 2-D      |
| APPROVED | M.A.      |                |          |          |          |





Areas of Potential Environmental Concern (APEC):

| Area of Potential Environmental Concern (APEC) | Location of Area of Potential Environmental Concern on Phase One Property | Potentially Contaminating Activity (PCA)                       | Location of PCA (On-Site or Off-Site) | Contaminants of Potential Concern                   | Media Potentially Impacted (Ground water, soil and/or sediment) |
|--|---|--|---------------------------------------|---|---|
| APEC-1   | Entire Site   | PCA 1 Item-30 :Importation of Fill Material of Unknown Quality | On-Site                               | Metals, hydride forming metals, PAHs, VOCs and PHCs | Soil and ground water   |
| APEC-29  | Along the road alignment  | PCA 38 Item-46: Rail Yards, Tracks and Spurs                   | Off-Site                              | Metals, hydride forming metals, PAHs                | Soil and ground water   |

REFERENCE:  
THIS FIGURE WAS PREPARED FROM GOOGLE EARTH IMAGERY DATED 2018.

LEGEND:

- THE SITE
- APEC 1

HDR CORPORATION

PHASE ONE ENVIRONMENTAL SITE ASSESSMENT

Proposed Eglinton East LRT Project, Scarborough, Ontario

AREAS OF POTENTIAL ENVIRONMENTAL CONCERN (APEC)

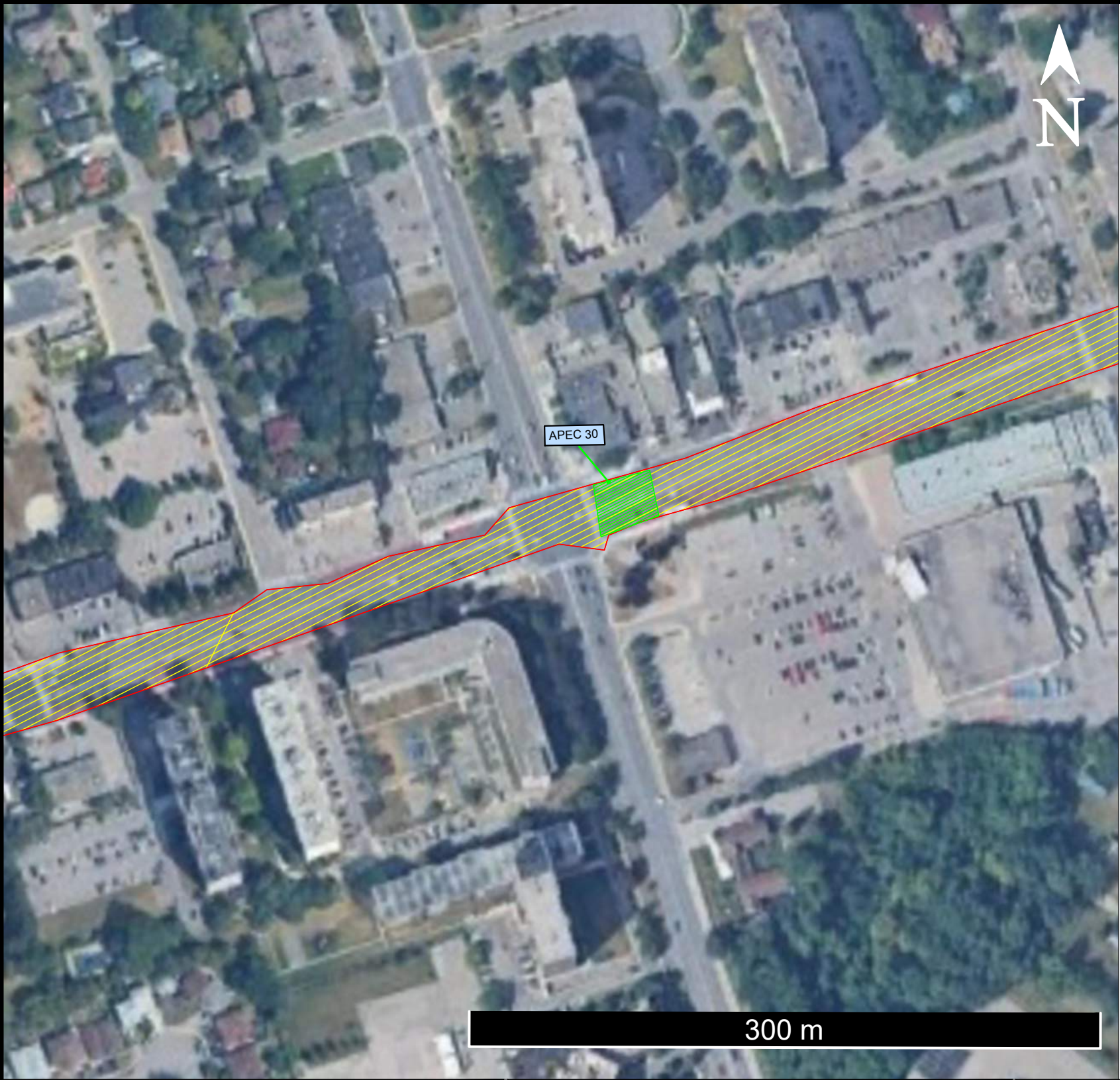
PML

Peto MacCallum Ltd.

CONSULTING ENGINEERS

|          |           |                |          |          |          |
|----------|-----------|----------------|----------|----------|----------|
| DRAWN    | A.S./K.T. | DATE           | SCALE    | PML REF. | DWG. NO. |
| CHECKED  | S.T.      | SEPTEMBER 2023 | AS SHOWN | 23TX013  | 2-E      |
| APPROVED | M.A.      |                |          |          |          |





**Areas of Potential Environmental Concern (APEC):**

| Area of Potential Environmental Concern (APEC) | Location of Area of Potential Environmental Concern on Phase One Property | Potentially Contaminating Activity (PCA)                                      | Location of PCA (On-Site or Off-Site) | Contaminants of Potential Concern                   | Media Potentially Impacted (Ground water, soil and/or sediment) |
|--|---|---|---------------------------------------|---|---|
| APEC-1   | Entire Site   | PCA 1 Item-30 : Importation of Fill Material of Unknown Quality               | On-Site                               | Metals, hydride forming metals, PAHs, VOCs and PHCs | Soil and ground water   |
| APEC-30  | Along the road alignment  | PCA 39 Item-50: Soap and Detergent Manufacturing, Processing and Bulk Storage | Off-Site                              | Metals, hydride forming metals                      | Soil and ground water   |

REFERENCE:  
THIS FIGURE WAS PREPARED FROM GOOGLE EARTH IMAGERY DATED 2018.

LEGEND:

THE SITE

APEC 1

HDR CORPORATION

PHASE ONE ENVIRONMENTAL SITE ASSESSMENT

Proposed Eglinton East LRT Project, Scarborough, Ontario

AREAS OF POTENTIAL ENVIRONMENTAL CONCERN (APEC)

PML

Peto MacCallum Ltd.

CONSULTING ENGINEERS

|          |           |                |          |          |          |
|----------|-----------|----------------|----------|----------|----------|
| DRAWN    | A.S./K.T. | DATE           | SCALE    | PML REF. | DWG. NO. |
| CHECKED  | S.T.      | SEPTEMBER 2023 | AS SHOWN | 23TX013  | 2-F      |
| APPROVED | M.A.      |                |          |          |          |





**Areas of Potential Environmental Concern (APEC):**

| Area of Potential Environmental Concern (APEC) | Location of Area of Potential Environmental Concern on Phase One Property | Potentially Contaminating Activity (PCA)                                      | Location of PCA (On-Site or Off-Site) | Contaminants of Potential Concern                   | Media Potentially Impacted (Ground water, soil and/or sediment) |
|--|---|---|---------------------------------------|---|---|
| APEC-1   | Entire Site   | PCA 1 Item-30 : Importation of Fill Material of Unknown Quality               | On-Site                               | Metals, hydride forming metals, PAHs, VOCs and PHCs | Soil and ground water   |
| APEC-31  | Along the road alignment  | PCA 41 Item-10: Commercial autobody shops                                     | Off-Site                              | Metals, hydride forming metals, PAHs, VOCs and PHCs | Soil and ground water   |
| APEC-32  | Along the road alignment  | PCA 42 Item-10: Commercial autobody shops                                     | Off-Site                              | Metals, hydride forming metals, PAHs, VOCs and PHCs | Soil and ground water   |
| APEC-33  | Along the road alignment  | PCA 43 Item-28: Gasoline and associated products storage in fixed tanks       | Off-Site                              | Metals, hydride forming metals, PAHs, VOCs and PHCs | Soil and ground water   |
| APEC-34  | Along the road alignment  | PCA 44 Item-50: Soap and Detergent Manufacturing, Processing and Bulk Storage | Off-Site                              | Metals, hydride forming metals                      | Soil and ground water   |

REFERENCE:  
THIS FIGURE WAS PREPARED FROM GOOGLE EARTH IMAGERY DATED 2018.

**LEGEND:**

-  THE SITE  
 APEC 1

**HDR CORPORATION**

**PHASE ONE ENVIRONMENTAL SITE ASSESSMENT**

Proposed Eglinton East LRT Project, Scarborough, Ontario

**AREAS OF POTENTIAL ENVIRONMENTAL CONCERN (APEC)**



|          |           |             |          |          |          |
|----------|-----------|-------------|----------|----------|----------|
| DRAWN    | A.S./K.T. | DATE        | SCALE    | PML REF. | DWG. NO. |
| CHECKED  | S.T.      | AUGUST 2023 | AS SHOWN | 23TX013  | 2-G      |
| APPROVED | M.A.      |             |          |          |          |





Areas of Potential Environmental Concern (APEC):

| Area of Potential Environmental Concern (APEC) | Location of Area of Potential Environmental Concern on Phase One Property | Potentially Contaminating Activity (PCA)                           | Location of PCA (On-Site or Off-Site) | Contaminants of Potential Concern                   | Media Potentially Impacted (Ground water, soil and/or sediment) |
|--|---|--|---------------------------------------|---|---|
| APEC-1   | Entire Site   | PCA 1 Item-30 : Importation of Fill Material of Unknown Quality    | On-Site                               | Metals, hydride forming metals, PAHs, VOCs and PHCs | Soil and ground water   |
| APEC-35  | Along the road alignment  | PCA 45 Item-10: Commercial autobody shops                          | Off-Site                              | Metals, hydride forming metals, PAHs, VOCs and PHCs | Soil and ground water   |
| APEC-36  | Along the road alignment  | PCA 46 Item-10: Commercial autobody shops                          | Off-Site                              | Metals, hydride forming metals, PAHs, VOCs and PHCs | Soil and ground water   |
| APEC-37  | Along the road alignment  | PCA 47 Item-10: Commercial autobody shops                          | Off-Site                              | Metals, hydride forming metals, PAHs, VOCs and PHCs | Soil and ground water   |
| APEC-38  | Along the road alignment  | PCA 48 Item-8: Chemical Manufacturing, Processing and Bulk Storage | Off-Site                              | Metals, hydride forming metals, PAHs, VOCs and PHCs | Soil and ground water   |
| APEC-39  | Along the road alignment  | PCA 50 Item-10: Commercial autobody shops                          | Off-Site                              | Metals, hydride forming metals, PAHs, VOCs and PHCs | Soil and ground water   |
| APEC-40  | Along the road alignment  | PCA 49 Item-10: Commercial autobody shops                          | Off-Site                              | Metals, hydride forming metals, PAHs, VOCs and PHCs | Soil and ground water   |

REFERENCE:  
THIS FIGURE WAS PREPARED FROM GOOGLE EARTH IMAGERY DATED 2018.

LEGEND:

- THE SITE
- APEC 1

HDR CORPORATION

PHASE ONE ENVIRONMENTAL SITE ASSESSMENT

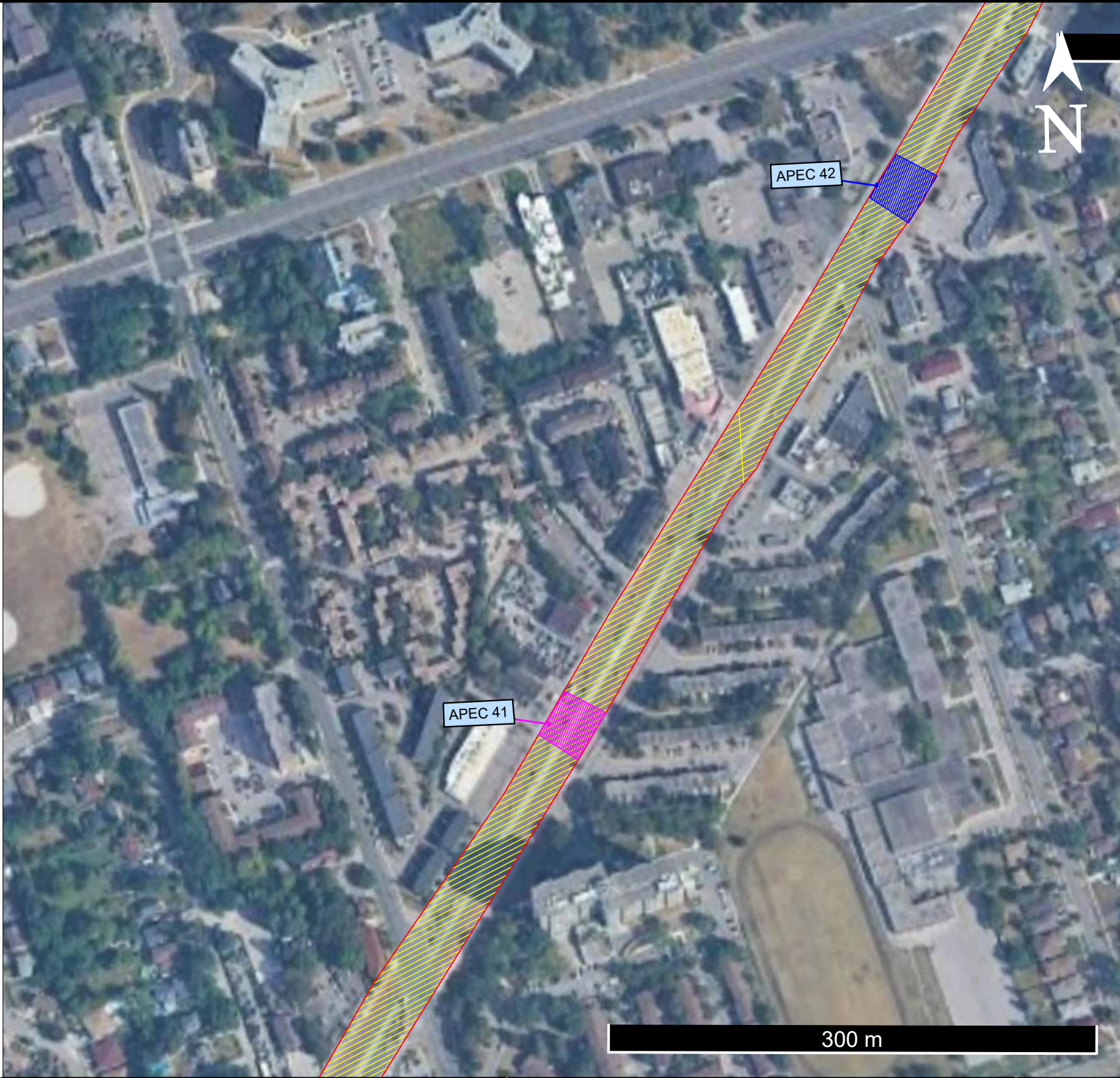
Proposed Eglinton East LRT Project, Scarborough, Ontario

AREAS OF POTENTIAL ENVIRONMENTAL CONCERN (APEC)



|          |           |                |          |          |          |
|----------|-----------|----------------|----------|----------|----------|
| DRAWN    | A.S./K.T. | DATE           | SCALE    | PML REF. | DWG. NO. |
| CHECKED  | S.T.      | SEPTEMBER 2023 | AS SHOWN | 23TX013  | 2-H      |
| APPROVED | M.A.      |                |          |          |          |





Areas of Potential Environmental Concern (APEC):

| Area of Potential Environmental Concern (APEC) | Location of Area of Potential Environmental Concern on Phase One Property | Potentially Contaminating Activity (PCA)                     | Location of PCA (On-Site or Off-Site) | Contaminants of Potential Concern                   | Media Potentially Impacted (Ground water, soil and/or sediment) |
|--|---|--|---------------------------------------|---|---|
| APEC-1   | Entire Site   | PCA 30 - Importation of Fill Material of Unknown Quality     | On-Site                               | Metals, hydride forming metals, PAHs, VOCs and PHCs | Soil and ground water   |
| APEC-41  | Along the road alignment  | PCA 51 Item-10: Commercial autobody shops                    | Off-Site                              | Metals, hydride forming metals, PAHs, VOCs and PHCs | Soil and ground water   |
| APEC-42  | Along the road alignment  | PCA 54 Item-28: Gasoline associated products in fixed tanks. | Off-Site                              | Metals, hydride forming metals, PAHs, VOCs and PHCs | Soil and ground water   |

REFERENCE:  
THIS FIGURE WAS PREPARED FROM GOOGLE EARTH IMAGERY DATED 2018.

LEGEND:

- THE SITE
- APEC 1

HDR CORPORATION

PHASE ONE ENVIRONMENTAL SITE ASSESSMENT

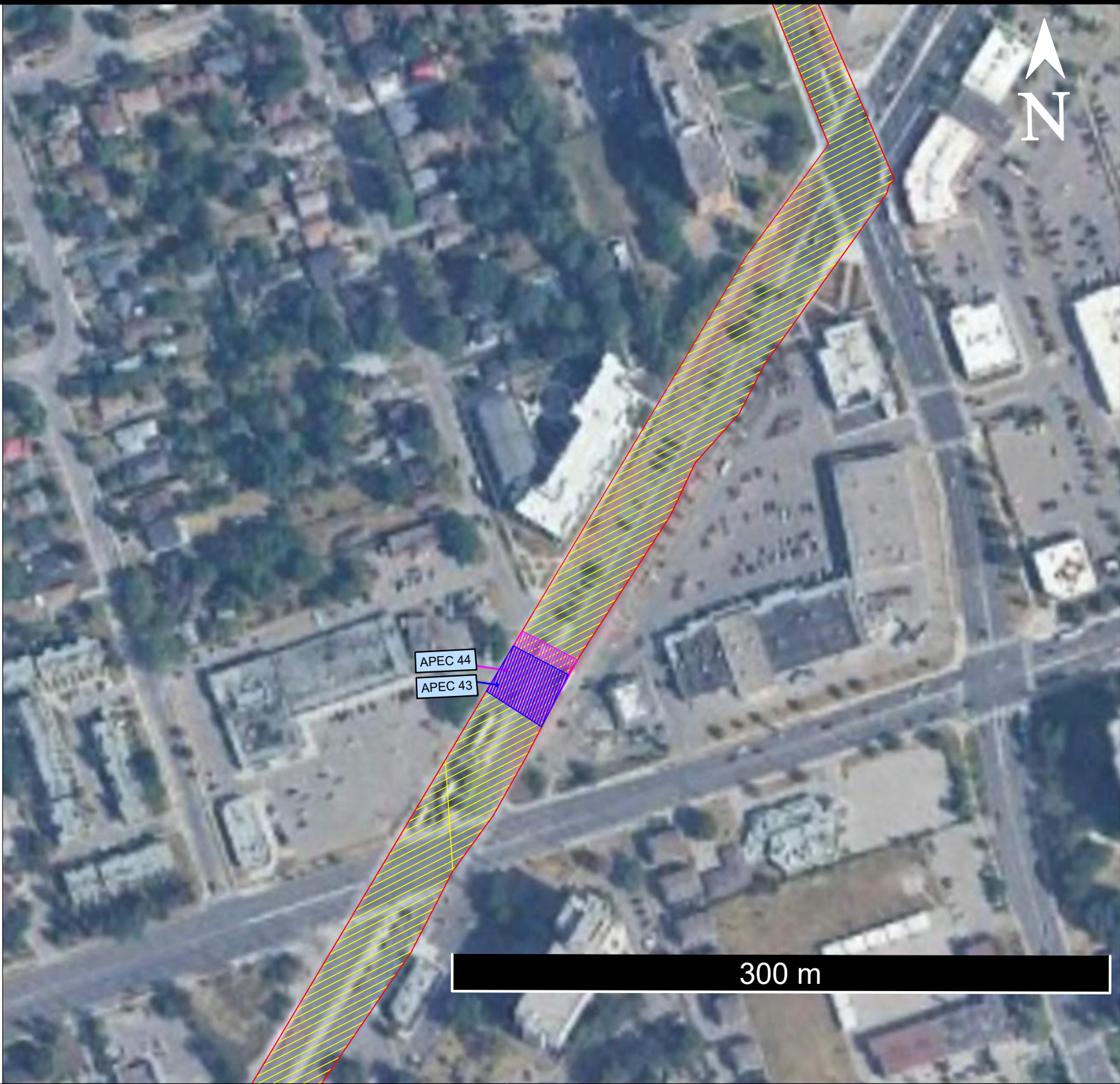
Proposed Eglinton East LRT Project, Scarborough, Ontario

AREAS OF POTENTIAL ENVIRONMENTAL CONCERN (APEC)



|          |      |                |          |          |          |
|----------|------|----------------|----------|----------|----------|
| DRAWN    | A.S. | DATE           | SCALE    | PML REF. | DWG. NO. |
| CHECKED  | S.T. | SEPTEMBER 2023 | AS SHOWN | 23TX013  | 2-1      |
| APPROVED | M.A. |                |          |          |          |





Areas of Potential Environmental Concern (APEC):

| Area of Potential Environmental Concern (APEC) | Location of Area of Potential Environmental Concern on Phase One Property | Potentially Contaminating Activity (PCA)                                | Location of PCA (On-Site or Off-Site) | Contaminants of Potential Concern                   | Media Potentially Impacted (Ground water, soil and/or sediment) |
|--|---|---|---------------------------------------|---|---|
| APEC-1   | Entire Site   | PCA 1 Item-30 : Importation of Fill Material of Unknown Quality         | On-Site                               | Metals, hydride forming metals, PAHs, VOCs and PHCs | Soil and ground water   |
| APEC-43  | Along the road alignment  | PCA 59 Item-28: Gasoline and associated products storage in fixed tanks | Off-Site                              | Metals, hydride forming metals, PAHs, VOCs and PHCs | Soil and ground water   |
| APEC-44  | Along the road alignment  | PCA 58 Item-10: Commercial autobody shops                               | Off-Site                              | Metals, hydride forming metals, PAHs, VOCs and PHCs | Soil and ground water   |

REFERENCE:  
THIS FIGURE WAS PREPARED FROM GOOGLE EARTH IMAGERY DATED 2018.

LEGEND:

THE SITE

APEC 1

HDR CORPORATION

PHASE ONE ENVIRONMENTAL SITE ASSESSMENT

Proposed Eglinton East LRT Project, Scarborough, Ontario

AREAS OF POTENTIAL ENVIRONMENTAL CONCERN (APEC)

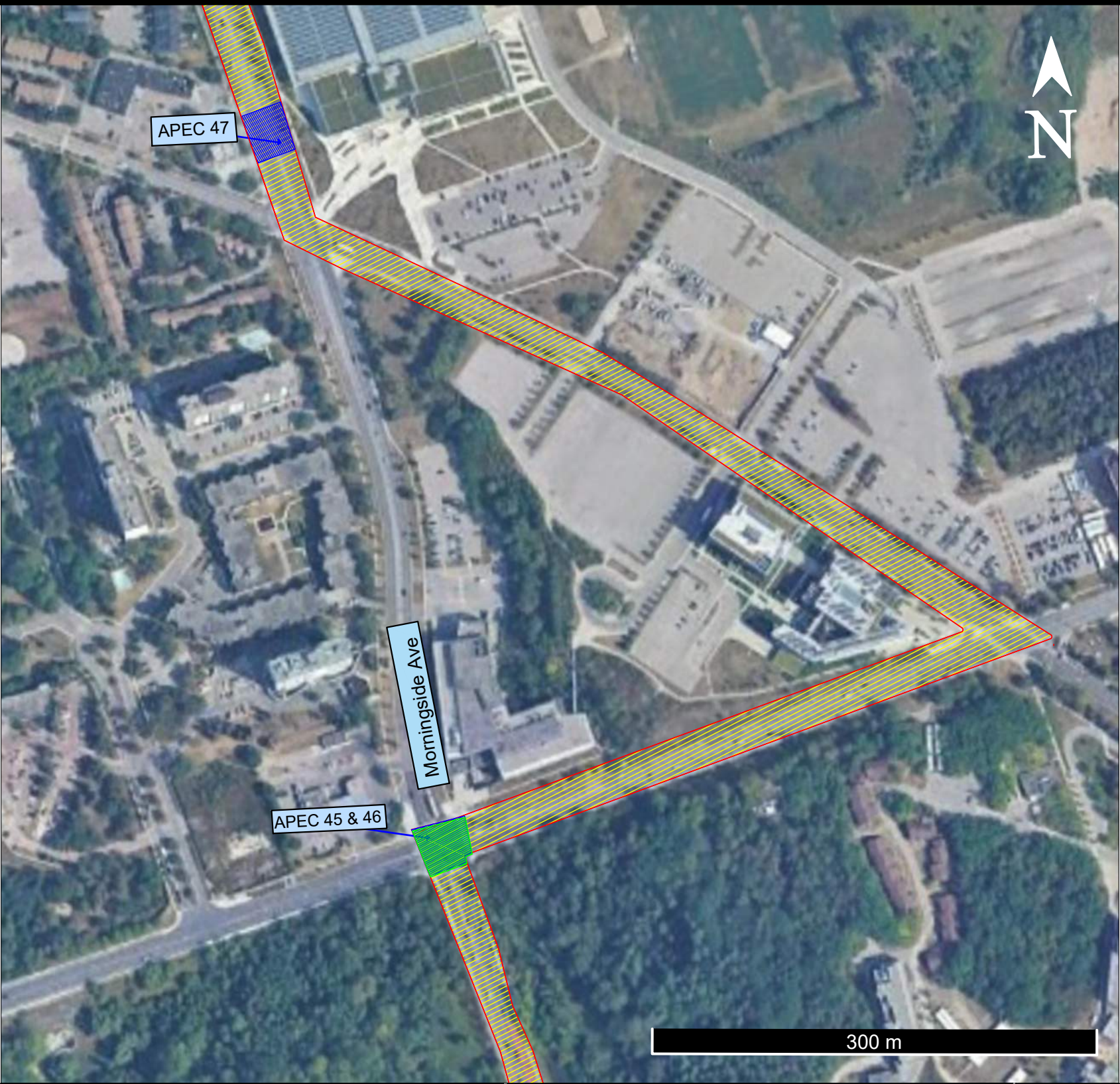
PML

Peto MacCallum Ltd.

CONSULTING ENGINEERS

|          |           |                |          |          |          |
|----------|-----------|----------------|----------|----------|----------|
| DRAWN    | A.S./K.T. | DATE           | SCALE    | PML REF. | DWG. NO. |
| CHECKED  | S.T.      | SEPTEMBER 2023 | AS SHOWN | 23TX013  | 2-J      |
| APPROVED | M.A.      |                |          |          |          |





**Areas of Potential Environmental Concern (APEC):**

| Area of Potential Environmental Concern (APEC) | Location of Area of Potential Environmental Concern on Phase One Property | Potentially Contaminating Activity (PCA)                                      | Location of PCA (On-Site or Off-Site) | Contaminants of Potential Concern                   | Media Potentially Impacted (Ground water, soil and/or sediment) |
|--|---|---|---------------------------------------|---|---|
| <b>APEC-1</b>                                  | Entire Site   | PCA 1 Item- 30 : Importation of Fill Material of Unknown Quality              | On-Site                               | Metals, hydride forming metals, PAHs, VOCs and PHCs | Soil and ground water   |
| <b>APEC-45</b>                                 | Along the road alignment  | PCA 56 Item-28: Gasoline and associated products storage in fixed tanks       | Off-Site                              | Metals, hydride forming metals, PAHs, VOCs and PHCs | Soil and ground water   |
| <b>APEC-46</b>                                 | Along the road alignment  | PCA 55 Item-50: Soap and detergent manufacturing, processing and bulk storage | Off-Site                              | Metals, hydride forming metals                      | Soil and ground water   |
| <b>APEC-47</b>                                 | Along the road alignment  | PCA 66 Item-28: Gasoline and associated products storage in fixed tanks       | Off-Site                              | Metals, hydride forming metals, PAHs, VOCs and PHCs | Soil and ground water   |

REFERENCE:  
THIS FIGURE WAS PREPARED FROM GOOGLE EARTH IMAGERY DATED 2018.

**LEGEND:**

- THE SITE
- APEC 1**

**HDR CORPORATION**

**PHASE ONE ENVIRONMENTAL SITE ASSESSMENT**

Proposed Eglinton East LRT Project, Scarborough, Ontario

**AREAS OF POTENTIAL ENVIRONMENTAL CONCERN (APEC)**



|                 |           |                |              |                 |                 |
|-----------------|-----------|----------------|--------------|-----------------|-----------------|
| <b>DRAWN</b>    | A.S./K.T. | <b>DATE</b>    | <b>SCALE</b> | <b>PML REF.</b> | <b>DWG. NO.</b> |
| <b>CHECKED</b>  | S.T.      | SEPTEMBER 2023 | AS SHOWN     | 23TX013         | 2-K             |
| <b>APPROVED</b> | M.A.      |                |              |                 |                 |





Areas of Potential Environmental Concern (APEC):

| Area of Potential Environmental Concern (APEC) | Location of Area of Potential Environmental Concern on Phase One Property | Potentially Contaminating Activity (PCA)                                | Location of PCA (On-Site or Off-Site) | Contaminants of Potential Concern                   | Media Potentially Impacted (Ground water, soil and/or sediment) |
|--|---|---|---------------------------------------|---|---|
| APEC-1   | Entire Site   | PCA 1 Item-30 : Importation of Fill Material of Unknown Quality         | On-Site                               | Metals, hydride forming metals, PAHs, VOCs and PHCs | Soil and ground water   |
| APEC-48  | Along the road alignment  | PCA 65 Item-28: Gasoline and associated products storage in fixed tanks | Off-Site                              | Metals, hydride forming metals, PAHs, VOCs and PHCs | Soil and ground water   |
| APEC-49  | Along the road alignment  | PCA 62 Item-28: Gasoline and associated products storage in fixed tanks | Off-Site                              | Metals, hydride forming metals, PAHs, VOCs and PHCs | Soil and ground water   |

REFERENCE:  
THIS FIGURE WAS PREPARED FROM GOOGLE EARTH IMAGERY DATED 2018.

LEGEND:

- THE SITE
- APEC 1

HDR CORPORATION

PHASE ONE ENVIRONMENTAL SITE ASSESSMENT

Proposed Eglinton East LRT Project, Scarborough, Ontario

AREAS OF POTENTIAL ENVIRONMENTAL CONCERN (APEC)

|  |           |                |          |          |          |
|--|-----------|----------------|----------|----------|----------|
| <div><div>PML</div><div>Peto MacCallum Ltd.</div><div>CONSULTING ENGINEERS</div></div> |           |                |          |          |          |
| DRAWN  | A.S./K.T. | DATE           | SCALE    | PML REF. | DWG. NO. |
| CHECKED  | S.T.      | SEPTEMBER 2023 | AS SHOWN | 23TX013  | 2-L      |
| APPROVED   | M.A.      |                |          |          |          |







**Areas of Potential Environmental Concern (APEC):**


| Area of Potential Environmental Concern (APEC) | Location of Area of Potential Environmental Concern on Phase One Property | Potentially Contaminating Activity (PCA)  | Location of PCA (On-Site or Off-Site) | Contaminants of Potential Concern                   | Media Potentially Impacted (Ground water, soil and/or sediment) |
|--|---|---|---------------------------------------|---|---|
| APEC-1   | Entire Site   | PCA1 Item- 30 : Importation of Fill Material of Unknown Quality                     | On-Site                               | Metals, hydride forming metals, PAHs, VOCs and PHCs | Soil and ground water   |
| APEC-50  | Along the road alignment  | PCA 68 Item-10: Commercial autobody shops   | Off-Site                              | Metals, hydride forming metals, PAHs, VOCs and PHCs | Soil and ground water   |
| APEC-51  | Along the road alignment  | PCA 70 Item-28: Gasoline and associated products storage in fixed tanks             | Off-Site                              | Metals, hydride forming metals, PAHs, VOCs and PHCs | Soil and ground water   |
| APEC-52  | Along the road alignment  | PCA 40 Item-50: Soap and Detergent Manufacturing, Processing and Bulk Storage tanks | Off-Site                              | Metals, hydride forming metals                      | Soil and ground water   |
| APEC-53  | Along the road alignment  | PCA 72 Item-28: Gasoline and associated products storage in fixed tanks             | Off-Site                              | Metals, hydride forming metals, PAHs, VOCs and PHCs | Soil and ground water   |
| APEC-54  | Along the road alignment  | PCA 73 Item-28: Gasoline and associated products storage in fixed tanks             | Off-Site                              | Metals, hydride forming metals, PAHs, VOCs and PHCs | Soil and ground water   |

REFERENCE:  
THIS FIGURE WAS PREPARED FROM GOOGLE EARTH IMAGERY DATED 2018.

**LEGEND:**  
 THE SITE  
 APEC 1

**HDR CORPORATION**  
**PHASE ONE ENVIRONMENTAL SITE ASSESSMENT**  
Proposed Eglinton East LRT Project, Scarborough, Ontario

**AREAS OF POTENTIAL ENVIRONMENTAL CONCERN (APEC)**

|   |           |                |          |          |          |
|---|-----------|----------------|----------|----------|----------|
|  |           |                |          |          |          |
| DRAWN   | A.S./K.T. | DATE           | SCALE    | PML REF. | DWG. NO. |
| CHECKED   | S.T.      | SEPTEMBER 2023 | AS SHOWN | 23TX013  | 2-M      |
| APPROVED  | M.A.      |                |          |          |          |





**Areas of Potential Environmental Concern (APEC):**

| Area of Potential Environmental Concern (APEC) | Location of Area of Potential Environmental Concern on Phase One Property | Potentially Contaminating Activity (PCA)                                | Location of PCA (On-Site or Off-Site) | Contaminants of Potential Concern                   | Media Potentially Impacted (Ground water, soil and/or sediment) |
|--|---|---|---------------------------------------|---|---|
| APEC-1   | Entire Site   | PCA 1 Item-30 : Importation of Fill Material of Unknown Quality         | On-Site                               | Metals, hydride forming metals, PAHs, VOCs and PHCs | Soil and ground water   |
| APEC-55  | Along the road alignment  | PCA 87 Item-10: Commercial autobody shops                               | Off-Site                              | Metals, hydride forming metals, PAHs, VOCs and PHCs | Soil and ground water   |
| APEC-56  | Along the road alignment  | PCA 75 Item-10: Commercial autobody shops                               | Off-Site                              | Metals, hydride forming metals, PAHs, VOCs and PHCs | Soil and ground water   |
| APEC-57  | Along the road alignment  | PCA 78 Item-10: Commercial autobody shops                               | Off-Site                              | Metals, hydride forming metals, PAHs, VOCs and PHCs | Soil and ground water   |
| APEC-58  | Along the road alignment  | PCA 82 Item-28: Gasoline and associated products storage in fixed tanks | Off-Site                              | Metals, hydride forming metals, PAHs, VOCs and PHCs | Soil and ground water   |
| APEC-59  | Along the road alignment  | PCA 76 Item-39: Paints Manufacturing Processing and Bulk Storage        | Off-Site                              | Metals, hydride forming metals                      | Soil and ground water   |
| APEC-60  | Along the road alignment  | PCA 77 Item-39: Paints Manufacturing Processing and Bulk Storage        | Off-Site                              | Metals, hydride forming metals                      | Soil and ground water   |
| APEC-61  | Along the road alignment  | PCA 80 Item-10: Commercial autobody shops                               | Off-Site                              | Metals, hydride forming metals, PAHs, VOCs and PHCs | Soil and ground water   |

REFERENCE:  
THIS FIGURE WAS PREPARED FROM GOOGLE EARTH IMAGERY DATED 2018.

**LEGEND:**

- THE SITE
- APEC 1

**HDR CORPORATION**

**PHASE ONE ENVIRONMENTAL SITE ASSESSMENT**

Proposed Eglinton East LRT Project, Scarborough, Ontario

**AREAS OF POTENTIAL ENVIRONMENTAL CONCERN (APEC)**



|          |           |                |          |          |          |
|----------|-----------|----------------|----------|----------|----------|
| DRAWN    | A.S./K.T. | DATE           | SCALE    | PML REF. | DWG. NO. |
| CHECKED  | S.T.      | SEPTEMBER 2023 | AS SHOWN | 23TX013  | 2-N      |
| APPROVED | M.A.      |                |          |          |          |





Areas of Potential Environmental Concern (APEC):

| Area of Potential Environmental Concern (APEC) | Location of Area of Potential Environmental Concern on Phase One Property | Potentially Contaminating Activity (PCA)                                 | Location of PCA (On-Site or Off-Site) | Contaminants of Potential Concern                   | Media Potentially Impacted (Ground water, soil and/or sediment) |
|--|---|--|---------------------------------------|---|---|
| APEC-1   | Entire Site   | PCA 1 Item-30 : Importation of Fill Material of Unknown Quality          | On-Site                               | Metals, hydride forming metals, PAHs, VOCs and PHCs | Soil and ground water   |
| APEC-62  | Along the road alignment  | PCA 88 Item -19: Electronic and Computer Equipment Manufacturing         | Off-Site                              | Metals, hydride forming metals, and PCBs            | Soil and ground water   |
| APEC-63  | Along the road alignment  | PCA 90 Item -48: Salt Manufacturing, Processing and Bulk Storage         | Off-Site                              | Metals, hydride forming metals                      | Soil and ground water   |
| APEC-64  | Along the road alignment  | PCA 93 Item -28: Gasoline and associated products storage in fixed tanks | Off-Site                              | Metals, hydride forming metals, PAHs, VOCs and PHCs | Soil and ground water   |
| APEC-65  | Along the road alignment  | PCA 95 Item -28: Gasoline and associated products storage in fixed tanks | Off-Site                              | Metals, hydride forming metals, PAHs, VOCs and PHCs | Soil and ground water   |

REFERENCE:  
THIS FIGURE WAS PREPARED FROM GOOGLE EARTH IMAGERY DATED 2018.

LEGEND:

- THE SITE
- APEC 1

HDR CORPORATION

PHASE ONE ENVIRONMENTAL SITE ASSESSMENT

Proposed Eglinton East LRT Project, Scarborough, Ontario

AREAS OF POTENTIAL ENVIRONMENTAL CONCERN (APEC)

PML

Peto MacCallum Ltd.

CONSULTING ENGINEERS

|          |           |            |          |          |          |
|----------|-----------|------------|----------|----------|----------|
| DRAWN    | A.S./K.T. | DATE       | SCALE    | PML REF. | DWG. NO. |
| CHECKED  | S.T.      | MARCH 2024 | AS SHOWN | 23TX013  | 2-O      |
| APPROVED | M.A.      |            |          |          |          |