

City of Toronto – Parks, Forestry & Recreation

Eglinton Park Master Plan Implementation Phase 1

Phase 3: Setting the Direction Engagement Summary

April 3, 2024

Eli Bawuah, Senior Public Consultation Coordinator

Tonya Crawford, Senior Project Coordinator



Contents

Introduction	2
1.1 Project Overview	2
1.2 Project Schedule	2
1.3 Project Scope	3
Phase 3 Engagement Activities.....	3
Indigenous Community Circle (ICC) Meeting #3.....	3
Public Survey #3.....	3
How We Reached People.....	4
What We Heard	4
Next Steps	5
Appendix A: Indigenous Community Circle Meeting #3 Summary.....	6
Appendix B: Public Survey #3 Engagement Summary Report.....	15

Introduction

The City completed the Eglinton Park Master Plan in 2019 and is working towards park improvements in a phased approach based on the four priority areas identified in the Master Plan and the available project budget. A three-phase community engagement process for Phase 1 Implementation: Priority Area 1 of the Master Plan is currently taking place.

This summary report, prepared by SAFFY, summarizes the key findings that emerged through Stage 2 of the public engagement process, as part of the Eglinton Park Revitalization of Priority Area 1.

More information about the project can be found on the [project webpage](#).

1.1 Project Overview

The City completed the [Eglinton Park Master Plan](#) in 2019, with the help of a professional design consultant, various internal stakeholders, user groups, and the public. The plan sets a long-term vision for the park through a four-phased approach that will see park improvements implemented as budget and timing allows. The Master Plan was a participatory effort and resulted in a plan focused on the landscape and environment (it does not include the playground, buildings, community centre, arena or parking lot).

The plan has since been revised to incorporate feedback from the public and Community Advisory Group (CAG) in late 2022/early 2023 during the ongoing community engagement process.

The revisions made to the Master Plan include:

- Maintaining the existing permitted sport recreation fields
- A slight shift south for the east/west walkway that connects the Oriole Parkway stairs to the main path
- Shifting the dogs off-leash area south
- Relocating the proposed skate spot frontage along Eglinton Avenue West
- Relocating the wet plaza/water feature to the existing wading pool location

The City is currently implementing improvements to Priority Area 1, which will only include general park upgrades, including:

- North/south pathway from the North Toronto Community Centre to Roselawn Avenue
- Dogs off-leash area
- Skateboard spot (small skateboarding area)
- Historic themed gardens
- Improvements to the existing stairs at Oriole Parkway

1.2 Project Schedule

- Winter 2021: Hire a design team
- Fall 2022 to Winter 2024: Community engagement
 - Community Engagement Stage 1: Confirming the Direction
 - Community Engagement Stage 2: Exploring Design Options
 - Community Engagement Stage 3: Setting the Direction (WE ARE HERE)
- Spring to Winter 2024: Design development
- Spring 2024: Hire a construction team
- Fall 2024: Construction starts
- Spring 2025: Construction complete

1.3 Project Scope

Phase 1 of the Eglinton Park Master Plan Implementation will only include general park upgrades and improvements to Priority Area 1, including:

- improvements to the east path, “central spine” path and west stairs;
- a dog off-leash area;
- a skate spot;
- Indigenous placekeeping; and
- passive gathering spaces

Phase 3 Engagement Activities

As a part of the engagement process for Phase 3 of the Eglinton Park Master Plan Implementation, three primary activities were conducted:

- Indigenous Community Circle Meeting #3
- Public Survey #3

Indigenous Community Circle (ICC) Meeting #3

The third Indigenous Community Circle meeting was held virtually on Webex, on Wednesday, February 21, 2024 from 6:00 p.m. to 8:00 p.m. Eleven Indigenous residents took part in the meeting. The purpose of the meeting was to present a project update on Phase 1 of the Eglinton Park Master Plan Implementation, including Indigenous placemaking concepts and design options. The Circle discussed the design ideas for Indigenous placekeeping elements in the park, such as the 13 panels/poles, contemporary representations of Indigeneity, suggestions for plants and the Memory Stones representing the 21 references to the Indian Act. The meeting also served as an opportunity for the project team to clarify any questions and concerns.

Public Survey #3

An online Public Survey was live on CheckMarket between December 15, 2023 and January 5, 2024. The objective of this public survey was to validate the preferred design of park elements for Priority Area 1 of the Eglinton Park Revitalization project. A total of 679 members of the public responded to the survey and 461 (68%) completed the survey in full.

How We Reached People

In Phase 3, the community was informed of engagement activities as listed below:

Digital Media

Project Webpage

The [project webpage](#) acts as a communications portal to inform the public about the Eglinton Park revitalization. The webpage hosts all up to date information regarding the project, including a sign-up button for e-updates.

E-Updates

Email updates with Phase 3 community engagement opportunities were distributed to the following groups for information, and further distribution.

- The project listserve (public signup on the project webpage).
- Community Advisory Group members were invited to respond and encouraged to circulate the survey within their networks.

Targeted Ads

Social media ads were created to encourage local residents and park users to share their input and to promote the public survey.

Targeted Outreach to Indigenous Community Organizations

The team from Ridge Road Training and Consulting distributed e-flyers to local Indigenous-serving organizations and Toronto Aboriginal Support Services Council (TASSC) for further circulation. They also reached out to members of the Indigenous Community Circle participants of the [Centennial Park Playground and Water Play Area project](#).

What We Heard

Overall Design

Views on proposed park improvements ranged from support to concerns about potential overdevelopment, with satisfaction generally expressed regarding the proposed designs. There were calls for transparency in budget allocations and ensuring initiatives benefit all park users. The park's character as a hidden gem for the local community was highlighted. Some respondents expressed concern that overdevelopment of the park may complicate its use as a flexible green space for gathering, nature and play. Others appreciated the nuanced approach which balanced the diverse needs of many users.

Regarding specific park design elements:

- 67% were satisfied with the proposed design of the Central Spine Path.
- 64% were satisfied with the proposed design of the Central Gathering Area.
- 50% were satisfied with the proposed design of the dog off-leash area.
- 65% were satisfied with the proposed improvements to the stairs at Oriole Parkway.
- 67% were satisfied with the proposed design of the community garden.
- 76% were satisfied with the proposed design for trees and plantings.
- Of the respondents that had a relationship to skateboarding, 36% preferred Design option 1 for the skate spot.

Indigenous Placekeeping

Suggestions were made to incorporate Indigenous teachings and contemporary representations into park design, including utilizing hydrophobic paint for Indigenous designs in the skate spot or the basketball court. Pushing back against historicization of Indigenous peoples, Indigenous participants emphasized the importance of representing modern Indigeneity as part of the urban fabric of Toronto. A Sacred Fire pit was suggested. An opening ceremony is mandatory.

Memory Stones and 13 Panels

The Memory Stones were well-received as a means of sparking conversation about Indigenous history, with recommendations to place them intentionally along the path of the mud creek and to include references to other concepts like Land Back. There was a call for acknowledging discomforting truths about colonialism. The 13 panels could be connected to the 13 moon teachings. There were suggestions of using different metals and features, so that rainfall would create different sounds, giving the park a voice and reminding us that the park is a living entity.

When asked to select images and symbols to be laser-cut into the panels,

- 48% of surveyed community members selected deciduous forest trees.
- 48% of surveyed community members selected wildflowers.
- 39% of surveyed community members selected animals.
- 34% of surveyed community members selected native pollinators.

Indigenous Plants

Indigenous Community Circle participants expressed interest in planting significant trees like cedar and incorporating healing plants into the park. There were desires to preserve and enhance the natural environment, using sustainable materials and native plants to contribute to ecological sustainability.

Accessibility and Safety

Concerns were raised about the accessibility of QR codes for older individuals and emphasized the importance of well-lit pathways, clear markings for shared paths, and maintenance of park features for safety and accessibility. Noise concerns and maintaining quiet zones were also mentioned. Participants were happy to see the bike rail on the West Stairs, as it improves accessibility for bikes.

Next Steps

The feedback received in Phase 3 of community engagement will be used to refine the proposed park design. The project moves into the detailed design phase, where the design team will finalize the preferred design by working through the technical details and drawings for the construction contractor. To be notified about upcoming engagements for the new park, visit the [project webpage](#) to sign up for e-updates.

Appendix A: Indigenous Community Circle Meeting #3 Summary



City of Toronto – Parks, Forestry & Recreation

Eglinton Park Master Plan Implementation

Indigenous Community Circle Meeting 3

February 2024



Project Team

City of Toronto

Elijah Bawuah, Senior Project Coordinator

Tonya Crawford, Senior Project Coordinator | Parks Development + Capital Projects

Christian Lukaszyk, Senior Project Manager

Plant

Eric Klaver, Managing Partner | Landscape Architect

Julie Ourceau, Project Manager, Architectural Designer, & Landscape Architectural Intern

Carl Valdez, Landscape Designer

Trophic Design

Tarence Radford, Landscape Architect and Indigenous Consultant

James Miller

SAFFY

Nadia Galati, Principal

Casey Hinton, Senior Strategist

Ridge Road Training & Consulting

Dr. Anton Birioukov-Brant, Director

Melissa Somer, Consultant



This report has been prepared by SAFFY, a third-party strategy, research, and engagement consultant and The Ridge Road Indigenous Training & Consulting for the City of Toronto Parks, Forestry & Recreation.

Contents

Project Team	2
City of Toronto	2
Plant	2
Trophic Design	2
SAFFY	2
Ridge Road Training & Consulting	2
Introduction	5
Meeting Purpose	5
Attendance	5
Indigenous Community Circle Members Present	5
Project Staff Present	5
Presentation	5
Questions and Discussion	5
Discussion	6
Wall Panels	6
Skate Spot	6
Contemporary Representation of Indigeneity	6
Placement of Stones	6
Planting	7
General	7
Questions	7
Next Steps	8
Contact Us	8

Introduction

This document provides a summary of the Indigenous Community Circle meeting held virtually on Wednesday, February 21, 2024 from 6 p.m. to 8 p.m. The Indigenous Community Circle was formed through outreach to members of the Indigenous Community Circle participants of the Centennial Park Playground and Water Play Area project. Additional grassroots outreach, including the circulation of a PDF flyer, led by Ridge Road Training and Consulting, and engagement with local Indigenous organizations and Toronto Aboriginal Support Services Council (TASSC) sought to expand the opportunity to participate to relevant and interested Indigenous communities. More information about the project can be found on the [project webpage](#).

Meeting Purpose

The purpose of this meeting was to:

- Present preferred designs for Phase 1 of Master Plan
- Present Indigenous placemaking concepts and design options.
- Discuss the design options and ideas for Indigenous placemaking.
- Question and answer period.
- Share next steps.

Attendance

Indigenous Community Circle Project Staff Present

Members Present

- 11

- City of Toronto
 - Tonya Crawford, Senior Project Coordinator
 - Elijah Bawuah, Senior Project Coordinator
- Plant
 - Eric Klaver, Managing Partner | Landscape Architect
 - Julie Ourceau, Project Manager, Architectural Designer, & Landscape Architectural Intern
- Trophic Design
 - James Miller
- SAFFY
 - Casey Hinton, Senior Strategist
- Ridge Road Training & Consulting
 - Melissa Somer, Consultant
 - Anton Birioukov-Brant, Director

Presentation

Project staff presented:

- An overview of the Eglinton Park Master Plan Phase I
- Designs and concepts for Indigenous placemaking

Questions and Discussion

The project team presented the Eglinton Park Master Plan Phase I, as well as Indigenous designs and placekeeping features. The participants were asked to provide feedback on the design and the Indigenous placekeeping elements in the park. Guiding discussion questions included:

1. Do you have any questions, comments or concerns with the preferred design?
2. What aspect do you appreciate most for the community?
3. Do the Indigenous Placekeeping elements resonate with you? Why or why not?
4. Does the concept of the 21 Memory Stones resonate with you? Why or why not?
5. Is there a placekeeping approach you prefer?
6. How could we improve or enhance this Indigenous placekeeping element?

Discussion

Wall Panels

The 13 panels/poles can be connected to the 13 moon teachings. There was a suggestion to have panels and poles to interact with the rain through acoustics. Different metals and features can be used to have rain create different sounds and this would offer a way for people to engage with the park even when it is raining. It would encourage people to come and connect with the land on rainy days. This would give the park a voice and make it a living entity people can be a part of.

There was a concern that the wall panels can be perceived as literal walls, which is out of alignment with the park's overall design. There were suggestions to make sure the wall panels incorporated lace work and a degree of transparency.

Skate Spot

The skate spot was well-received, as there are not many skateparks in the area. There were discussions about using hydrophobic paint (i.e., paint that reacts to water) and painting Indigenous designs in the skate spot. Syllabics designed as street tagging could be painted in the skate spot. This paint would only be visible when it interacts with water (i.e., rain) and it will only be seen when people are not using the skate spot. It would open this place when it is not being traditionally used.

Contemporary Representation of Indigeneity

Participants felt that all people in what is now Toronto need to better understand how the original peoples lived and to incorporate those teachings into their lives. However, the participants were also quick to point out that the park needs to have contemporary representations of Indigeneity. There were concerns that Indigenous peoples are not recognized as Indigenous if they are not wearing regalia, and the participants wanted to push back against the historicization of Indigenous peoples. The participants recommended having modern and contemporary representations of Indigeneity through street art (i.e., tagging). Artists from different Indigenous communities could be invited to paint murals in the skate spot and basketball court. Having this artwork demonstrates that Indigenous peoples are part of the modern city and urban living experience. Indigenous peoples are a vibrant, flourishing, and diverse urban community in Toronto.

Placement of Stones

The Memory Stones were well received by the participants who spoke positively about incorporating information about the *Indian Act*, which was seen as a conversation starter. There were suggestions to be more intentional with the placement of the stones and to place them in

way that reflects the path of the mud creek. Likewise, some participants recommend placing more stones closer to Eglinton Street and to have more stones in the central part of the park.

A participant recommended referring to concepts similar to Land Back that arguably go further in provoking critical dialogue than the 21 references to the *Indian Act*. It was felt that a certain level of discomfort must be provoked for people to fully understand past and ongoing colonialism.

Planting

The participants had several suggestions concerning the different types of trees and plants that could be introduced into the park. There were recommendations for the planting of cedar trees, which have many teachings. Planting sweetgrass and healing plants was also proposed. A participant suggested planting mint and lavender to discourage rodents away from the edible plants in the Eglinton Park Community and Mashkiki Gitigaan (Medicine Wheel Garden).

General

General feedback is consolidated into point form below.

- Participants liked seeing the bike rail on the West Stairs, as it improves accessibility for bikes.
- In relation to incorporating QR codes within the park, the participants cautioned about the inaccessibility of QR codes to older individuals.
- There was a recommendation to construct a shed for gardening tools and firewood.
- A Sacred Fire pit was suggested.
- An opening ceremony is a must.

Questions

During the session, participants were invited to ask questions orally or in the chat. Below are the questions (Q) from the Indigenous Community Circle participants and responses (R) by the project team.

Q: Will any cedar trees to be planted?

R: There are no cedars currently included, but it is an excellent suggestion, and we will consider.

Q: How many screens are being placed?

R: The curved wall which forms the border is about 10 meters long. There are eight to nine 4 ft x 8 ft panels being installed. There are 13 posts that form the edge of the walkway leading up to the curved wall. Each one of these will have an inscription and an element of the flora and fauna.

Q: Would there be a sacred fire pit?

R: In this phase there is no fire pits proposed, there is a fire pit proposed in future phases. The community fire pit is not a sacred fire pit.

Q: Is there any accessible ramp at the staircase? Are there other access points?

R: The West slope is quite steep, unfortunately the only access up the slope is by stair. Installing a ramp would take out a lot of that slope and those trees in that slope. The design

aimed to have the least amount of disturbance to the slope. The designers used existing paths and stairs and threaded the stairs between the trees. It is not possible to do an accessible access without huge disturbance to the trees. Other existing slopes along the pathway are being changed to make them more accessible.

Q: Accessible washroom for all?

R: There are accessible washrooms in the North Toronto Community Centre that are available for the public.

Next Steps

- Staff shared that members could send additional ideas, comments, or suggestions to Tonya.Crawford@toronto.ca and/or abirioukovbrant@theridgeroad.com
- Staff compiled a written summary of the meeting and distributed it to members for review.
 - Members had one week to provide suggested edits to the draft summary, after which the summary was finalized.

Contact Us

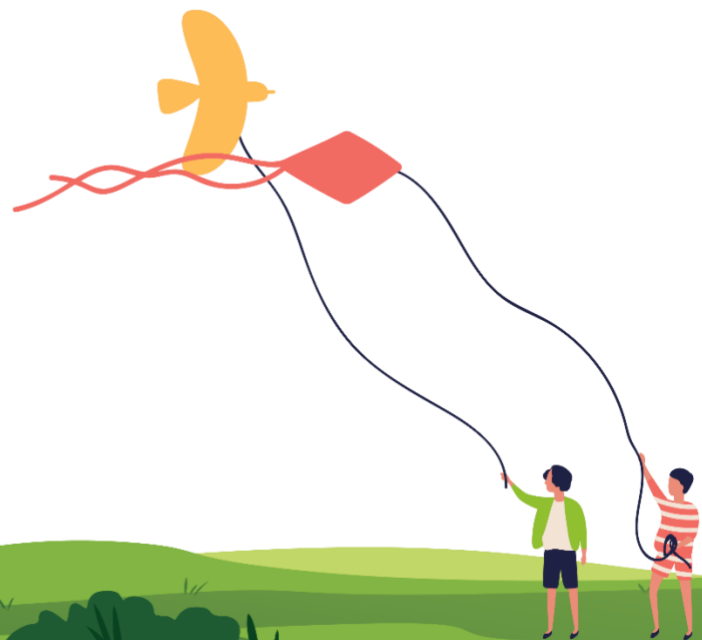
For questions or comments related to this project, please contact:

Anton Birioukov-Brant

Director | Ridge Road Training & Consulting, Inc.

Phone: 778-998-1611 | Email: abirioukovbrant@theridgeroad.com

Appendix B: Public Survey #3 Engagement Summary Report



City of Toronto – Parks, Forestry & Recreation

Eglinton Park Master Plan Implementation Phase 1

Public Survey #3 Engagement Summary Report

April 2024

Tonya Crawford, Senior Project Coordinator

Elijah Bawuah, Senior Public Consultation



Contents

1.0 Introduction.....	2
1.1 Project Background.....	2
1.2 Project Overview	2
1.3 Engagement Schedule.....	3
2.0 Engagement Overview.....	3
2.1 Engagement Objectives.....	3
2.2 Engagement Approach	4
2.3 Who We Engaged	4
3.0 What We Heard	5
3.1 Key Insights	5
3.2 Public Survey Summary.....	6
3.2.1 Demographic Profile of Survey Respondents.....	6
3.2.2 Survey Responses	9
4.0 Next Steps.....	14
Appendix A: Survey Questions.....	15
Appendix B: Open Ended Comments Log.....	18



1.0 Introduction

1.1 Project Background

The City completed the Eglinton Park Master Plan in 2019 and is working towards park improvements in a phased approach based on the four priority areas identified in the Master Plan and the available project budget. A three-phase community engagement process for Phase 1 Implementation: Priority Area 1 of the Master Plan is currently taking place.

This survey summary report, prepared by SAFFY, summarizes the key findings that emerged through Public Survey #3 (Phase 1 Implementation Public Survey), as part of the Eglinton Park Revitalization of Priority Area 1. This report summarizes key findings from the Public Survey conducted between December 15, 2023 and January 5, 2024.

1.2 Project Overview

The City completed the [Eglinton Park Master Plan](#) in 2019, with the help of a professional design consultant, various internal stakeholders, user groups, and the public. The plan sets a long-term vision for the park through a four-phased approach that will see park improvements implemented as budget and timing allows. The Master Plan was a participatory effort and resulted in a plan focused on the landscape and environment (it does not include the playground, buildings, community centre, arena or parking lot).

The plan has since been revised to incorporate feedback from the public and Community Advisory Group (CAG) in late 2022/early 2023 during the ongoing community engagement process.

The revisions made to the Master Plan include:

- Maintaining the existing permitted sport recreation fields
- A slight shift south for the east/west walkway that connects the Oriole Parkway stairs to the main path
- Shifting the dogs off-leash area south
- Relocating the proposed skate spot frontage along Eglinton Avenue West
- Relocating the wet plaza/water feature to the existing wading pool location

The City is currently implementing improvements to Priority Area 1, which will only include general park upgrades, including:

- North/south pathway from the North Toronto Community Centre to Roselawn Avenue
- Dogs off-leash area
- Skateboard spot (small skateboarding area)
- Historic themed gardens
- Improvements to the existing stairs at Oriole Parkway

1.3 Engagement Schedule

- Phase 1 — Confirm the Directions
 - Park Pop-Up Event(s)
 - Social Pin-Point & Survey
 - Community Advisory Group Meeting
 - Indigenous Community Meeting
- Phase 2 — Exploring Options
 - 2 Community Advisory Group Meetings
 - Community Advisory Group Meeting Survey
 - Public Survey
 - Indigenous Community Meeting
- Phase 3 — Setting the Direction
 - Public Survey - We Are Here
 - Indigenous Community Meeting

2.0 Engagement Overview

2.1 Engagement Objectives

The objective of this public survey was to collect feedback from the public about the final proposed and preferred design options for Priority Area 1 of the Eglinton Park Revitalization project, including:

- Preferred design for central spine path, to better connect park features and amenities, which is inspired by the historic and buried Mud Creek
- Preferred design for the central gathering space, where paths connect to act as a focal point for the park
- Preferred design for the dog-off-leash area
- Preferred design for the west stair replacement
- Preferred design for the community garden and planting areas

Feedback from the public survey and engagement will be used to inform the details of the final design for Phase 1 Implementation of the Master Plan in Eglinton Park.

2.2 Engagement Approach

The public survey was designed as a way to connect with a broad public audience, ensuring engagement with a broad range of community members.

A total of 679 members of the public responded to the survey and 461 completed the survey in full. The survey was hosted digitally on CheckMarket and was open from December 15, 2023 and January 5th, 2024.

The public survey was advertised through various channels, including on the Eglinton Park Revitalization project webpage, social media and project signage.

2.3 Who We Engaged

There were 679 survey participants.

The majority of survey respondents (75%) described themselves as local residents that use Eglinton Park. The remaining responses were received from the following categories (respondents could select more than one option):

- I am a skateboarder who uses the park (27%)
- My child/family member plays sports in Eglinton Park (21%)
- I am a local dog owner who uses Eglinton Park (20%)
- I play sports in Eglinton Park (15%)
- I am a member of a local community groups, association or organization (12%)
- Other (4%)
- I am a local Indigenous resident (1%)

13% of survey respondents indicated that they were a member of a local community organization, association, or community group. The following organizations were represented:

- Allenby Parents Association
- Avenue Road Eglinton Community Association (ARECA)
- Central Eglinton Childrens' Centre
- Chainzmag
- City of Toronto Garden Club
- City of Toronto Parks, Forestry and Recreation
- Eglinton Park Residents Association (EPRA)
- Eric Anweiler Manager North Toronto Arena
- Lytton Park Residents Association (LPRA)
- North Toronto CI Parent Council
- North Toronto Group of Artists Chair
- North Toronto Hockey Association
- North Toronto Memorial Arena Board
- North Toronto Soccer
- Orchardview Seniors Second Mile Club
- Oriole Park Residents' Association (OPRA)
- Queer Skate Toronto
- Skateboard Canada
- Stanley Knowles Co-op
- Stella's Place

- Toronto Pickleball Club
- Toronto Skateboard Committee

The majority of respondents, 65%, indicated that they have not previously responded to Eglinton Park surveys this year, 22% have previously responded to surveys, and 13% were unsure. The demographic profile of survey respondents can be found in [Section 3.2.1](#).

3.0 What We Heard

The following section contains a summary of the feedback received through the public survey. See Appendix A for a full list of questions included in the public survey and Appendix B for a log of all open-text responses.

3.1 Key Insights

Key insights that have emerged from the public survey are consolidated by the topic or theme below. It is clear from this engagement that participants hold diverse opinions on proposed changes, reflecting a variety of preferences and needs. Views range from support for improvements to concerns about potential overdevelopment and changes to the park's simplicity. Survey respondents were generally satisfied with the proposed designs. Some pointed to the need for a larger dog off-leash area, while others were pleased with the outcome, acknowledging the balancing of the various features and amenities. Some non-skatepark users questioned whether this feature served a broad enough public, though generally community members were supportive and simply highlighted the need for safety.

Transparency and Budget Concerns

Some respondents expressed concern about the transparency of the budget allocations, particularly about specific initiatives like DOLA, skate park, and Indigenous Placekeeping, emphasizing initiatives that they perceived would be beneficial to all park users.

Safety & Accessibility

Safety, achieved through lighting, and the importance of accessible pathways was emphasized throughout the survey. Some respondents also highlighted the importance of maintaining quiet zones within the park, with some sharing noise concerns related to the skate spot and basketball activities. Clear path markings for shared paths with different mobility devices was suggested to ensure accessibility and to build awareness amongst different park users. Maintenance of pathways, stairs and park features and amenities was raised as essential for accessibility within the park.

Sustainability

Respondents were happy to see the use of native plants and expressed a desire to ensure the preservation, and enhancement of the natural environment to contribute to ecological sustainability. Some respondents questioned the use of concrete and metal, hoping to see materials that may be more porous or sustainable, to sustainability and natural systems.

Park Character

Some respondents expressed concern that overdevelopment of the park may complicate its use as a flexible green space for gathering, nature and play. Others appreciated the nuanced approach which balanced the diverse needs of many users. The park's character, as a hidden gem for the local community, was underscored by many.

3.2 Public Survey Summary

3.2.1 Demographic Profile of Survey Respondents

In order to hear a variety of perspectives on the proposal for Eglinton Park, it was important to engage with folks from different demographic groups. Below you'll find demographic details of respondents. Overall, the sample skews older, male, white, English-speaking, property-owning, able-bodied and heterosexual. That said, breakdowns are largely on target for the demographic makeup of the Eglinton Park neighbourhood.

Age

Most respondents (27%) fell into the age 40-55 bracket, while:

- 13 to 18 years old - 5%
- 19 to 29 years old - 20%
- 30 to 39 years old - 19%
- 56 to 64 years old - 10%
- 65 to 74 years old - 12%
- 75 years old or above - 4%
- Prefer not to answer - 3%

Languages

96% of respondents indicated their preferred spoken language is English. 1% indicated French, Spanish or prefer not to answer as their preferred spoken language.

Race

88% of respondents indicated that they do not identify as First Nations, Inuit, Metis, Aboriginal, Native or Indian. 9% preferred not to answer, and 3% identified as First Nations, Inuit, Metis, Aboriginal, Native or Indian.

When asked to describe themselves by their race or racial background, 59% of respondents selected White (e.g. English, Greek, Italian, Portuguese, Russian, Slovakian), while:

- Prefer not to answer - 16%
- East Asian (e.g. Chinese, Japanese, Korean) - 6%
- Latin American (e.g. Brazilian, Colombian, Cuban, Mexican, Peruvian) - 5%
- Other - 4%
- More than one race category or mixed race - 4%
- Southeast Asian (e.g. Filipino, Malaysian, Singaporean, Thai, Vietnamese) - 3%
- Black (e.g. African, African-Canadian, Afro-Caribbean) - 2%
- Arab, Middle Eastern or West Asian (e.g. Afghan, Armenian, Iranian, Lebanese, Persian, Turkish) - 2%
- First Nations (status, non-status, treaty or non-treaty), Inuit or Métis - 2%
- South Asian or Indo-Caribbean (e.g. Indian, Indo- Guyanese, Indo-Trinidadian, Pakistani, Sri Lankan) - 1%

Disability

10% of respondents indicated that they do have a disability, as defined by having a physical, mental, developmental, cognitive, learning, communication, sight, hearing or functional limitation that, in interaction with a barrier, hinders a person's full and equal participation in society, while:

- 78% indicated they do not have a disability
- 11% prefer not to answer
- 1% don't know

Excluding the survey participant, 12% of respondents indicated that someone in their household does have a disability, as defined the same terms above, while:

- 76% indicated that no one in their household has a disability
- 11% prefer not to answer
- 2% don't know

Gender Identity and Sexual Orientation

When asked to identify their gender, the survey participants indicated:

- Man - 46%
- Woman - 37%
- Prefer not to answer - 13%
- Gender non-binary (including gender fluid, genderqueer, androgynous) - 2%
- Not listed - 2%
- Trans woman - 1%
- Trans man - 1%

When asked to identify their sexual orientation, survey participants indicated:

- Heterosexual or straight - 67%
- Prefer not to answer - 20%
- Bisexual - 5%
- Not listed - 2%
- Queer - 2%
- Don't know - 2%
- Lesbian - 1%
- Gay - 1%

Housing

When asked to describe their housing situation, most respondents (46%) indicated they were home owners, while:

- Renting - 33%
- Permanently living with parent(s) or other family member(s) - 10%
- Temporarily staying with others (no fixed address) - 1%
- Unhoused (staying outside, in a shelter, in a 24-hour respite) - 0%
- Prefer not to answer - 11%

Access to Outdoor Space

When asked to describe their household's access to outdoor space, 49% of respondents indicated they have access to a private outdoor space like a yard, while:

- I only have access to public spaces like parks (I do not have access to private or semi-private outdoor space) - 19%
- I have access to private outdoor space like a balcony - 18%
- Prefer not to answer - 13%
- I have access to semi-private/shared outdoor space - 9%

Communication about this Survey

When asked to disclose how they found out about this survey, 43% of respondents indicated they saw an ad or post from a City of Toronto social media account, while:

- Word of mouth (including non-City of Toronto social media account) - 26%
- Email from the project team - 12%
- I don't know/Prefer not to answer - 10%
- Park sign - 7%
- Councillor's Office communications - 6%
- The project webpage - 3%
- Mailer to my home - 1%

3.2.2 Survey Responses

There's a range of opinions on the proposed design, including requests for a larger dog area, concerns about noise from skateboarding and basketball, and differing views on proposed changes. Some welcome improvements, while others advocate for budget-consciousness and maintaining simplicity. Concerns about overdevelopment, lack of maintenance, winter facilities, and effects on seniors are mentioned. Feedback on Indigenous Placekeeping at Eglinton Park varies, with some supporting the emphasis on Indigenous voices and symbols, while others raise concerns about cost and the impact on the park's aesthetics. The skatepark elicits mixed reviews, with calls for safety improvements. Overall, the feedback underscores the challenge of balancing diverse perspectives in the redesign.

Central Spine Path

After reviewing the proposed design for the Central Spine Path, respondents were asked to indicate their level of satisfaction. The majority of respondents (67%) indicated they were satisfied, while:

- 18% indicated they were Somewhat satisfied
- 7% indicated they were Neutral
- 4% indicated they were Somewhat unsatisfied
- 4% indicated they were Not satisfied

When asked to elaborate, those who selected "somewhat satisfied", "neutral", "somewhat unsatisfied", or "not satisfied" shared a diversity of opinions about the proposed design. Some prefer patterned concrete over pavers, citing sanitation and long-term maintenance and durability. Others find the design choices, like benches with extra arms, hazardous and unfriendly. There are concerns about the environmental impact, with requests for permeable pavements, and opposition to further paving, especially if it compromises existing green space and creates an indirect route through the park. Concerns about cyclists and pedestrians competing for space on the path, homeless-friendly architecture, shade and potential barriers to access for seniors and people with mobility challenges are also voiced.

Central Gathering Area

After reviewing the proposed design for the Central Gathering Area, respondents were asked to indicate their level of satisfaction. The majority of respondents (64%) indicated they were satisfied, while:

- 18% indicated they were Somewhat satisfied
- 9% indicated they were Neutral
- 4% indicated they were Somewhat unsatisfied
- 5% indicated they were Not satisfied

When asked to elaborate, those who selected "somewhat satisfied", "neutral", "somewhat unsatisfied", or "not satisfied" some community members expressed concerns about the overuse of concrete, the need for more seating, and potential maintenance challenges, others appreciated the visual appeal and thoughtful design. Issues raised include worries about the safety of certain features at night, potential graffiti on interpretive panels, and the placement of the central gathering space. We heard an emphasis on the importance of greenery, native plants, and shade, while others question the necessity of the cost of certain architectural elements. The desire for clear sightlines, functionality, maximizing greenspace, porous

surfaces, and considerations for various user groups, such as families and seniors, are recurring themes.

DOLA (Dog Off-Leash Area)

After reviewing the proposed design for the Dola, respondents were asked to indicate their level of satisfaction. The majority of respondents (50%) indicated they were satisfied, while:

- 16% indicated they were Somewhat satisfied
- 9% indicated they were Neutral
- 10% indicated they were Somewhat unsatisfied
- 16% indicated they were Not satisfied

When asked to elaborate, those who selected "somewhat satisfied", "neutral", "somewhat unsatisfied", or "not satisfied" some community opinions on the proposed dog off-leash area (DOLA) in the park are diverse. Some express concerns about the size of the DOLA, potential conflicts with other park users, and worries about maintenance and cleanliness. Several respondents emphasized the need for proper enforcement of leash laws throughout the other areas of the park. There are mixed feelings about the location of the DOLA, with some suggesting the fountain should be closer, and others feeling it is too close to other activities and may interfere with existing park features like the toboggan hill. Concerns about the fence design and ground cover material were also expressed. While some appreciate the inclusion of a DOLA, others question its necessity and suggest alternative locations or smaller sizes.

Stairs

After reviewing the proposed design for the Stairs, respondents were asked to indicate their level of satisfaction. The majority of respondents (65%) indicated they were satisfied, while:

- 13% indicated they were Somewhat satisfied
- 14% indicated they were Neutral
- 5% indicated they were Somewhat unsatisfied
- 4% indicated they were Not satisfied

When asked to elaborate, those who selected "somewhat satisfied", "neutral", "somewhat unsatisfied", or "not satisfied" some community members expressed skepticism about the need for changes, citing the functionality and aesthetic of the current wooden stairs. Accessibility is a recurring theme, with suggestions for less steep, wider steps, and ramps to accommodate diverse mobility needs. Some residents question the necessity of the bike ramp and its potential for misuse. Aesthetic considerations are also prominent, with requests for more visually pleasing materials, friendlier design, and concern about the impact on the park's greenery.

Community Garden

After reviewing the proposed design for the Community Garden, respondents were asked to indicate their level of satisfaction. The majority of respondents (67%) indicated they were satisfied, while:

- 13% indicated they were Somewhat satisfied
- 11% indicated they were Neutral
- 3% indicated they were Somewhat unsatisfied
- 5% indicated they were Not satisfied

When asked to elaborate, those who selected "somewhat satisfied", "neutral", "somewhat unsatisfied", or "not satisfied" some community feedback indicated a lack of clarity as to the purpose of the garden (food source, educational, etc.), perhaps highlighting a broader lack of awareness of the existing community garden space. Many feel that an upgraded garden would be an enhanced feature for the park, while others express that the current garden is underutilized and not properly maintained, and question whether an improved garden is necessary, or should be eliminated altogether. Concerns about potential misuse, such as teens gathering at night and dog mischief, are raised. Others suggest practical improvements, such as using porous materials instead of concrete pavers, including more bench seating and ensuring well-lit paths for safety. A desire for larger and more accessible community gardens is voiced, while some criticize proposed elements like the interpretive fence and bench design. Overall, the community's diverse perspectives underscore the need for careful consideration of the garden's purpose, usability, and integration into the larger park environment.

Trees and Plantings

After reviewing the proposed design for the Trees and Plantings, respondents were asked to indicate their level of satisfaction. The majority of respondents (76%) indicated they were satisfied, while:

- 14% indicated they were Somewhat satisfied
- 5% indicated they were Neutral
- 3% indicated they were Somewhat unsatisfied
- 2% indicated they were Not satisfied

Overall, most respondents are satisfied with the proposed native species trees and plantings for the park. When asked to elaborate, those who selected "somewhat satisfied", "neutral", "somewhat unsatisfied", or "not satisfied", some expressed concerns about the viability of mixing wetland, prairie, and forest plants in a small area. The desire for well-maintained, native species that offer habitat to wildlife is a recurring theme. Questions about plans for maintenance, plant identification signage, and the potential foraging of wild foods in public spaces are raised. Some suggest avoiding plants toxic to dogs, allergen-producing plants, and fruit-bearing plants as they may attract pests. It is a priority for some to leave the bottom of the hill free of trees to ensure a safe tobogganing space.

Skate Spot

When asked to identify their relationship with skateboarding, the majority (70%) respondents selected “none of the above”, indicating no relationship with skateboarding, while:

- 7% indicated they are the guardian of someone who skateboards
- 7% indicated they were intermediate
- 7% indicated they were a beginner
- 6% indicated they participate in other action sports, such as rollerblading, BMX, scootering, mountain bike
- 4% indicated they were an expert
- 4% indicated they have yet to try skateboarding but are interested in starting

67% of respondents indicated a desire to complete the entire survey, while 33% wished to only provide answers to the skate spot specific questions. Responses from those who indicated their desire to complete the entire survey are compiled below.

When asked to select their top 3 preferred skate obstacles, respondents selected:

- 57% indicated bank
- 53% indicated quarterpipe
- 45% indicated rail
- 23% indicated hubba ledge
- 23% indicated kicker ramp with gap
- 22% indicated pyramid
- 20% indicated manual pad

After reviewing the proposed designs for the Skate Spot, respondents were asked to select their favourite design (of four options). The majority of respondents who selected an option preferred Design 2 (13%), while:

- 10% indicated they prefer Design 1
- 7% indicated they prefer Design 4
- 6% indicated they prefer Design 3
- 65% indicated they had no preference (53%) or none of the above (12%)

Some residents express enthusiasm for the addition, recognizing it as a positive space for teenagers. However, concerns arise about budget allocation, noise, and the imposition of the skate park on green spaces. Some respondents suggest a better use for the space would be to keep it green, or perhaps install art or a pickleball court instead. Skepticism about the necessity of the skate park and its potential impact on the environment is evident, with calls for careful consideration of noise and space utilization. Suggestions for specific features, like pump tracks, round rails, ledges, were made.

Responses who indicated a preference to answer only skate spot specific questions are summarized below.

When asked to describe their relationship to skateboarding, the majority (51%) indicated they are an “intermediate” while:

- 30% indicated they are an expert
- 13% indicated that they are a beginner
- 12% indicated that they participate in other action sports such as rollerblading, BMX, scootering, mountain biking
- 6% indicated they are the guardian of someone who skates

When asked about their top 3 preferred skate obstacles, 54% selected “Quarterpipe”, while:

- 50% selected Manual Pad
- 47% selected Rail
- 42% selected Hubba ledge
- 36% selected Bank
- 30% selected Pyramid
- 14% selected Kicker ramp with gap

When asked which of the four skate spot Design options they preferred, 36% selected Design 1, while:

- 27% selected Design 2
- 18% selected Design 4
- 9% selected Design 3
- 5% indicated No preference
- 5% selected None of the above

Images and Symbols on Laser-Cut Panels around Central Gathering Space

Respondents were asked to select their top 3 preferred images and symbols to be portrayed on the laser-cut panels around the central gathering space. Deciduous forest trees and wildflowers both scored at 48%, while:

- 39% indicated animals
- 34% indicated native pollinators
- 26% indicated tallgrass prairie plants
- 22% indicated species at risk
- 21% indicated berries, fruits, edible/medicinal
- 15% indicated grasses and sedges
- 12% indicated wetland and riparian plants

Indigenous Placekeeping Elements

Indigenous survey respondents were invited to respond to some specific Indigenous placekeeping elements. After considering the proposed Indigenous placekeeping elements, respondents were asked to indicate their level of satisfaction. The majority of respondents (67%) indicated they were satisfied, while:

- 9% indicated they were Somewhat satisfied
- 16% indicated they were Neutral
- 2% indicated they were Somewhat unsatisfied
- 5% indicated they were Not satisfied

Some residents express support, emphasizing the importance of Indigenous input in decision-making and a desire for symbols that reflect the Indigenous community's values. However, others view it as an unnecessary expense and suggest focusing on preferences of the overall park users. Concerns are raised about the placement of symbols, the height of the fence, and the potential impact on the park's natural feel. Some respondents, particularly non-Indigenous individuals, feel uncertain about providing opinions on symbols and suggest letting the Indigenous community lead the decision-making.

4.0 Next Steps

Additional engagement with local and urban Indigenous communities will be ongoing in this final phase, to confirm additional Indigenous placekeeping elements. Following the review and analysis of this survey, the City will move forward with the preferred design option for tender and construction. Additional project updates can be found on the [project webpage](#).

Appendix A: Survey Questions

- What best describes you? Select all that apply.
 - I am a local resident who uses Eglinton Park
 - I am a skateboarder who uses the park
 - My child/family member plays sports in Eglinton Park
 - I am a local dog owner who uses Eglinton Park
 - I play sports in Eglinton Park
 - I am a member of a local community groups, association or organization
 - Other, please describe
 - I am a local Indigenous resident
- Have you completed previous Eglinton Park Improvement surveys this year?
 - Yes
 - No
 - Not Sure
- If you're a member of a local organization, association or community group, please enter the name here:
- If you only wish to complete the section of this survey regarding the new skate spot please select, "skip to the skate spot section", below. Please note, by choosing to skip to the skate spot section, you will not be shown any other information, designs, or questions regarding other proposed amenities and design elements for Eglinton Park.
- How do you feel about the overall Preferred Phase 1 Site Plan for Eglinton Park?
- If you chose, "somewhat satisfied", "neutral", "somewhat unsatisfied", or "not satisfied" for the previous question, please share why below.
- When considering the proposed design option and improvements for the central spine path, how satisfied are you?
 - Satisfied
 - Somewhat satisfied
 - Neutral
 - Somewhat unsatisfied
 - Not satisfied
- If you chose, "somewhat satisfied", "neutral", "somewhat unsatisfied", or "not satisfied" for the previous question, please share why below.
- When considering the proposed design option and improvements for the central gathering area, how satisfied are you?
 - Satisfied
 - Somewhat satisfied
 - Neutral
 - Somewhat unsatisfied
 - Not satisfied

- If you chose, "somewhat satisfied", "neutral", "somewhat unsatisfied", or "not satisfied" for the previous question, please share why below.
- When considering the proposed design option and improvements for the DOLA, how satisfied are you?
 - Satisfied
 - Somewhat satisfied
 - Neutral
 - Somewhat unsatisfied
 - Not satisfied
- If you chose, "somewhat satisfied", "neutral", "somewhat unsatisfied", or "not satisfied" for the previous question, please share why below.
- When considering the proposed design option and improvements for the stairs, how satisfied are you?
 - Satisfied
 - Somewhat satisfied
 - Neutral
 - Somewhat unsatisfied
 - Not satisfied
- If you chose, "somewhat satisfied", "neutral", "somewhat unsatisfied", or "not satisfied" for the previous question, please share why below.
- When considering the proposed design option and improvements for the Community Garden area how satisfied are you?
- If you chose, "somewhat satisfied", "neutral", "somewhat unsatisfied", or "not satisfied" for the previous question, please share why below.
- When considering the proposed design option for trees and plantings, how satisfied are you?
 - Satisfied
 - Somewhat satisfied
 - Neutral
 - Somewhat unsatisfied
 - Not satisfied
- If you chose, "somewhat satisfied", "neutral", "somewhat unsatisfied", or "not satisfied" for the previous question, please share why below.
- What best describes your relationship to skateboarding? Select all that apply.
- What are your top 3 preferred Skate obstacles?
- Which of the four (4) skate spot Design options do you prefer?

- If budget permits, are there other features you would like to see in the skatespot?
- Please select your top three preferred symbols or images to be represented in the laser cut panels around the central gathering space.
- When considering the proposed Indigenous placekeeping elements, how satisfied are you?
 - Please share any feedback regarding the proposed Indigenous Placekeeping for Eglinton Park below:
- Do you have any final comments or feedback you would like to share?

Appendix B: Open Ended Comments Log

Below all comments and questions to open ended questions have been included. Below each question, they are organized by general topic or theme. At the end of this appendix, the City has included additional information and responses to many of the topics raised through these comments.

*As per the City's Human Rights and Anti-Discrimination policy, xenophobic, misogynist, homophobic, transphobic, anti-Indigenous, ableist, ageist or other forms of discriminatory, prejudicial, exclusionary or hateful comments or questions have been removed in this document.

How do you feel about the overall Preferred Phase 1 Site Plan for Eglinton Park? If you chose, 'somewhat satisfied', 'neutral', 'somewhat unsatisfied', or 'not satisfied' for the previous question, please share why below.

Comments on the Dog Off-Leash Park

- Don't see the need for an off leash dog park, that reduces the available green space for everyone to enjoy (and particularly don't understand why it should usurp what made a pleasant tobogganing area (albeit unsanctioned) (2) would have preferred the basketball court had been a priority over a skate park .
- Although I think the dogs should be contained in an area, I do not think they should get a priority area over people. Having a basketball court right beside a pool is not a smart idea as I am sure the ball will end up going over the fence. Ideally, they should switch locations.
- Bigger off leash area needed.
- Bylaw needs all dogs must be leashed except when in designated fence off unleashed dog area, instead of 4 tennis courts designate & redesign area for 2 tennis courts & 3 pickleball courts, clean up & upgrade field house washrooms, regrade both soccer pitches as well as area in between soccer pitches - west of #20 & east of # 18 & 19 & this open area between the 2 soccer pitches, designate one day a week Sundays as a cricket pitch with no organized soccer or baseball allowed to be scheduled for safety reasons & to be culturally inclusive for cricket enthusiasts.
- Concerned that the off leash dog park will make the toboggan hill unsafe as that is the only spot where the kids can go down safely. The hill towards the south of that has trees at the bottom
- Do not want a dog off leash area
- Dog off leash area is placed inappropriately beside the arena where all sound will bounce off the walls and that area is endlessly wet in fall-spring if it is a mild winter. And the garden which is simply oriole stuffing plants in the ground has no purpose, care on going or thought!
- Dog park is too small
- Dog park looks too small
- Dog park needs to be bigger. Having the large space helps many dog owners and dogs to play nicely.
- don't block the bottom of the hill for an off-leash area because kids need to go tobogganing and you know they will even though u put signs and posts up near the trees that can injure a child when they toboggan. Last year a girl broke her ankle while toboggan

- Don't like off leash area
- Glad to see an off-leash dog area - so those using the park will no longer have unwanted encounters with an off-leash dog. It's not clear if the existing path (10) will continue to extend past the parking lot and arena - we often use this paved path to get through the park to shopping on Eglinton and Yonge
- Has been impossible to find "current" version of plan. Dog park is a necessary evil but will be too small for the number of dogs in the area. Basketball court should be in an underutilized space south of the community Center.
- I do not want the off leash dog area as they tend to smell bad
- I don't like the idea of a fire pit in a park where people will be allowed to have alcohol and the dog area is too close to the playground. When people come into the park they automatically let their dogs off the leash because there are no cars around and they run wild. They will not wait to walk over to the dog area before taking them off the lease and the dogs will continue to run near the playground and wading pool.
- I feel that the dog off leash should be bigger
- I feel the park is fine for the hundreds of people who use it. The dogs don't care. We need realistic ideas for the limited dollars we have in the city.
- I like that there will be an off leash area for dogs and a skate area for the boarders. There is enough room to accommodate lots of different groups.
- I support a larger dog park, with a separate area for small dogs.
- I think a larger off-leash dog area is needed. Please make sure there is a water source. Please expand it so dogs can run up the hill to some extent. This is good for exercising large dogs (eg, throwing a ball up the hill so they run up it).
- I would like to see a dedicated small dog section in the dog area.
- I would prefer a larger dog off leash area. With the size of the Phase 1 dog off lease area, dog owners will likely continue to exercise their dogs (off leash) on the sports fields.
- I'm not thrilled about the off leash dog area, I think as it is now, dogs are happy and owners are being respectful. I wish it didn't become a confined space for dogs
- I'm unhappy about the dog park. The way it was approved was underhanded. It does not align with park policy of not creating new dog parks, There is no dog association. It takes away from the toboggan hill, it takes away green space, it creates a huge single user space in the park.
- Locating the Dog Park, which presumably will be fenced, at the bottom of the toboggan hill is an invitation to disaster. People will still want to use the hill, but will only be left with a very narrow landing point to the left side of the hill. The dog park should either be at the top of the hill or in front of the community centre.
- Not a fan of the dog off leash area. Would prefer things to stay as they are.
- Off leash area should not be so central.
- Off leash area too large.
- Off leash dog area has too central a location is much too small we are better off with designated owner-responsible off leash times
- Off leash dog area should be a bit larger and have a divide between big dogs and small dogs
- Off-leash area is not large enough
- The current proposed off leash dog park area fence, will result in a safety hazard to the toboggan users in the winter. The area is heavily used by people performing the exercises, taichi, yoga, frisbee and general park use for sunning and picnics in the summer months. A better location is to locate the off leash area where the future basketball court area, next to the proposed mini skate park.

- Oppose off leash area
- Overall it is a much improved plan. I am deeply concerned about a fire pit in the park. Additionally, I believe it was the city who had indicated that a study had been conducted and there is not sufficient space for a dog park. The park is such a great space for sports and fitness enjoyed by 100s of children and families. Not sure why we are taking space away from the kids
- Overall, it's a great plan but the dog park is tiny.
- Per the City findings, the park is not large enough for a dog park.
- Previous iterations showed the DOLA as a larger area near the south diamond/west soccer area. My concern is that this will be a small DOLA (and the only one in the neighborhood) and it will either be crowded and unsafe or unclean due to the volume of dogs. If it is crowded or unclean, people will still let their dogs run outside the area
- Restore the toboggan hill and remove the off leash area. I am a dog owner who walks my dog on leash, everywhere, but not in the Park since my dog is frightened by prowling dogs. A small fenced area is not going to stop owners letting them loose in the large area unless there is enforcement of existing rules. With enforcement, there is no need for an off leash area restricting public use of the area for tobogganing and pickup games of any sort.
- Seems to mostly be minor modifications. People already let their dogs go unleashed in the park. Would suggest more basketball courts if anything
- The dog area is small, with no small dog area it will mean that there is not enough room for the large number of dog visitors every day
- The dog off leash area is too small. If I had a dog I would not use it. There is plenty of empty space in the park in the morning and after work for dog walking.
- The dog off-leash area appears to be too small
- The dog park is far too small. The skate park has not been requested by community members nor has the 'pollinator garden'. Both are whims of city staff that are strongly opposed by community members and have been since 2019. Cancel both. They will take away from space that is already actively used by the community and create dead zones that have not been requested by the community and will not be used. You have been told this over and over again since 2019. Stop listening to hired urban planning firms who have whims like 'pollinator gardens'. This space is used, and loved, by tens of thousands of people every year. Adding in dead space to suit an urban planner's whim will hurt the community.
- The dog park should be MUCH larger and include the hill and treed area. A dog park this size will NOT meet the need.
- The dog park will not be used; dog owners will continue to use the park and let the dogs run off leash. The dog park will also become a mud pit, smelly the same as the one at Cedarvale Park. The dog park will also take up space where local families, especially those in apartments, meet and socialize. The new walkway also cuts down trees and all that really needs to be done is fix the existing stairs, saves money and trees.
- The fenced off-leash area kills the sledding, always forbidden and a bit dangerous, but popular. Why not make the hill safe, with berms around the trees and before the brick wall of the arena.
- The off leash area for dogs appears to be too large and too close to the bottom of the hill which is space used for other activities and there should be more separation
- The off leash park does not belong beside the baseball diamond, I thought it was going in the south west corner on the top of the hill
- What will the impact of the dog park be on sledding during the winter? Good spot for dog park but may cause some collisions

- Where is the dog fountain? Many times when I am at the park the only users are dog owners. This creates a small area for dogs. Happy to see more open space maintained than the design I saw long ago.

Comments on the proposed Fire Pit

- 1. Why is there a fire pit in this city park? 2. Why is a fire pit so close to the playground? Is there a concern for wind to push smoke into the playground area? 3. Please consider extending the dog park up the hill and into the forested area to allow dogs to have more roaming space.
- Based on experience with this park and Oriole Park down the street, I am concerned that, just like all of the other attempts at planting, the pollinator garden will become trampled and ultimately just compacted dirt. I also do not see how a fire pit area will be adequately maintained.
- Delete unnecessary and environmentally damaging basketball court and firepit.
- Don't like the fire pit.
- Fire pit? You can't keep the park clean from all the broken beer bottles and can't imagine managing a fire pit.
- Fire Pit not required. Why is the basketball court listed as future? New dog off leash area not required as dogs are off leash already.
- Fire pit should be farther away from the playground. Existing east path should have clear separation between cyclists and pedestrians/kids. New central spine path should have clear separation between cyclists & kids. There should be speed limits as cyclists often race down the path.
- Hill is being blocked by the leash free area, firepit is a silly idea
- I am against the fire pit . I consider it extremely dangerous.
- I am happy about the plan except for one thing - is dedicating space for a fire pit realistic. Will that even be allowed to be used
- I am not in favour of the fire pit area. I think it will present many problems with the youth in the late evenings.
- I am satisfied, but curious as to how the use of the firepit area is envisioned.
- I'm interested in hearing more about why we need fire pits
- I would like to understand how the fire pit area is to be used and how it will be monitored to ensure fire safety. If this is not addressed in a meaningful way it is unwise to implement. Thought should be given to a safe area where children can slide down the hills in the winter rather than creating a potential fire hazard. For as long as I've lived on Edith Drive one of the terrific aspects of this park has been topography which allows for joyful winter activities for children. Why is this overlooked?
- I would love for barbeque areas to be included as a lot of people are in condos or apartments without access
- Overall it is a much improved plan. I am deeply concerned about a fire pit in the park. Additionally , I believe it was the city who had indicated that a study had been conducted and there is not sufficient space for a dog park. The park is such a great space for sports and fitness enjoyed by 100s of children and families. Not sure why we are taking space away from the kids
- Not in favour of fire pit in park
- Why is a fire pit needed? Will the trees cut down by Metrolinx (and replaced by grass in December so it is now dying) be replaced?
- why do we need a fire pit area
- The idea of having fire pits so central where sound carries to all homes around the perimeter and close to the playground is not a wise choice.

- The proposed fire pit will likely be unused.

Comments about the Field House

- Field house also requires replacing, should do a paved running track around the entirety of park
- Field house should be improved, add some food and beverage options
- The existing Field House /Tool shed and the concrete area around it is quite unsightly. If it can't be moved then at least refurbish it. Perhaps the skate park can be in the existing concrete area surrounding the Field House?

Comments about the Sports

- I feel 2 full baseball diamonds are a waste of space, I use the park almost everyday and hardly ever see the one by the west stairs in use. Takes up a large portion of space for little usage.
- I really like the new additions such as the outdoor basketball court and I hope there will be lights. The only reason I put "somewhat" because it would be great to get a pickleball court there.
- I think there needs more courts for things like pickleball
- I would like to see more pickle ball courts.
- lots more options for sports
- Would like to see larger or more outdoor swimming pools to enable outdoor lane swimming. Lane swimming was available in previous years but not summer of 2023.
- Would have liked to see other elements (pickleball, outdoor exercise equipment)
- Not innovative, pretty much the same as before. For consideration - fitness area with equipment, outdoor pickleball.
- On most if not all of my visits to the park the playground is extremely busy. I think upgrades or expansion to it must be part of the plan.
- No pickleball courts: no community vegetable gardens.
- Prefer no basketball or skate park.
- Put a roof of some sort over the tennis court/outdoor rink. It does not need to be fully closed, but it would be beneficial to block sun and rain/snow.
- Would like to see dedicated pickleball courts. NOT tennis courts with painted lines for pickleball, requiring both tennis & pickleballers to share/fight over.

Comments about Layout and Location of Park elements

- I am wholly opposed to the balkanization of a park I have used for 40+ years, into different 'activity' areas that privilege some residents over others. This is a civic, open, green space that I urge be kept available for all citizens and not subdivided. I do not support our parks being subdivided for specialized activity areas. People can do sports where there is grass, and they have the entire city in which to walk their dogs. The green space should be for all of us to use.
- I do not like the change in the west steps location, nor do I like the central path running alongside an off leash dog area without there being a barrier between the two.
- I don't think the skate spot and basketball court belong so close to Eglinton.
- I prefer the current location of the basketball court, to preserve the trees near Eglinton and the outdoor pool.
- I see no reason to eliminate the existing east path from Roselawn Ave. to Eglinton Ave. I believe there is currently ample space for dogs (on or off leash) to roam/play as well as nicely integrated features of the playground, field house, etc. The primary focus of the park should continue to be large areas available for community-based sports and

recreational activities and while I don't object in principle to a skate park, I believe the focus should still be the playing fields for both soccer & baseball.

- I think more basketball, even if sacrificing some tennis, would be better. And more landscaping overall, especially trees, are in order.
- I seldom use the park but still do care about the impact to the neighbourhood.
- I think the central spine path will be a waste of money as the existing central path is the main walkway for most people.
- I think the skate park next to the busy street is a bad idea. And the dog park in the centre of the park means people have to walk past the dogs to access most of the park.
- I would like to be able to walk around Eglinton park, not just through it.
- I'm done with the park the way it is, I don't see value in further subdividing it
- Lots of unused space at the front of the park facing Eglinton. Needs to be better integrated with the street. Also lots of unused space behind the community centre and west of the arena.
- Terrible layout
- A new splash pad would be nice in lieu of the wading pool
- All of the improvements are in the park and not aimed at improving access to Eglinton on Roselawn, Eglinton or from Orchard View. park.
- As a senior living nearby I need the park for outdoor walking on a good surface such as fine gravel (not cement) and more places to sit.
- As previously noted, more trees are necessary.
- Do not add trees to the toboggan hill People will always toboggan remove shade structure, remove firepit, keep community garden where it is.
- Doesn't look like there is enough space between the tennis courts. I hope there will also be pickleball courts.
- Tobogganing and crashed into your post and sign. Remove the post and sign!
- Don't know enough to comment yet.
- Basketball court should be included in phase 1. Would be nice to have this youth focused area completed at the same time.
- Better connection for cyclists from Roselawn to Eglinton.
- Bigger area for skatepark.

Comments about Seating

- I would like to see more sitting areas, last summer we would grab take out and eat in the park, but there is nowhere to sit. The only picnic table is near the playground and parents usually hoard the space. We don't have kids or dogs and don't play sports, so going to the park is about being outside and in nature. This is the only nearby park, so while I love all the sports areas for others, they will not be of much use for me.
- I'd like more human friendly benches especially at Roselawn Avenue facing south
- more seating, 'picnic' type areas required for people to gather as a family
- We need more park benches in sun and shade as seasons change

Comments about Safety and Accessibility

- The basketball court is a few metres from my backyard and I am concerned about people gathering there at night to party.
- The existing paths need some maintenance especially during the winter as they are not as accessible
- Constructing a fence for the off leash area at the bottom of a popular sledding hill, seems like a dangerous plan.

- The skate spot could be bigger. Also, the proximity to the basketball court could be problematic. Is there a barrier between them to keep stray balls or skateboards from entering the adjacent area?
- The skate spot seems very small considering the size of the park
- The skatepark looks too small in reference to the population and number of skaters in the area
- There is a need for many more Pickleball courts
- There was no planning, 40,000 new people coming into the area and no future demand consideration was given.
- There's always room for improvement if the process doesn't feel complete and therefore we're reviewing/approving something that's unfinished.
- there's not much new to the overall space. Feels like you're just formalizing stuff that already happens at the park
- Want the basketball court completed ASAP

Comments about the Skate Spot

- Not sure I want a skateboard spot.
- We don't need a skate park. Kids don't skateboard anymore.
- A skate park is a bad idea, why is there no lighting improvement? Park is so dark and dangerous at night plus kids can't play soccer in evenings
- The skate area seems very small.

Nature and Planting

- Would like to see more trees in the park for shade
- Pollinator garden should be as large as possible
- Should plant fruit trees
- There's no nature themed trails.
- The main thing that comes to mind is how to protect the pollinator gardens from dogs walking on the plants and peeing on them - resulting in all the plants dying.

General Comments

- Not enough parking.
- The park is used heavily right now. People love it, everyone goes there regularly. The lesson is to LEAVE THE PARK ALONE. If something isn't broken, why change it? What is the reason? It makes no sense at all. Leave the park alone. It's fabulous as it is. Put money into something that actually needs to be changed.
- This design will not solve the feces problems that are affecting the park.
- Would like to see more innovation
- I'm new to the neighborhood and I'm not able to provide any real analyses of the preferred design.
- I'm not sure that the pergola structure is necessary, but depending on how intrusive it is, I will keep an open mind.
- I'm not sure whether some of the proposed structures will take away the much-needed existing greenspace.
- I'm not against this idea
- It addresses multiple needs.
- It looks great but it's a bit "over designed". Not very space needs to be designed into something. It's a park; some areas should be left as grass and trees. I'm referring to the "shade structure/ pergola" and the "gathering space".
- It seems ok was hoping they would put in splash pad instead of the wading pool

- It's fine the way it is.
- It's not clear on the map what path way will connect the lower landing of the new west stairs to the eastern side of the park past the north side of the arena. Currently there is no path. IT'S NOT CLEAR
- It's small but I see how it's made and it fits well.
- Cancel both. They will take away from space that is already actively used by the community and create dead zones that have not been requested by the community and will not be used. You have been told this over and over again since 2019. Stop listening to hired urban planning firms who have whims like 'pollinator gardens'. This space is used, and loved, by tens of thousands of people every year. Adding in dead space to suit an urban planner's whim will hurt the community.
- There should be a splash pad added to this.

When considering the proposed design option and improvements for the central spine path, how satisfied are you? If you chose, 'somewhat satisfied', 'neutral', 'somewhat unsatisfied', or 'not satisfied' for the previous question, please share why below.

Paving and Pathways:

- Another opportunity for kids to damage park benches and more concrete to heat up the environment!
- Don't love adding more cement or making it less green than it is
- Good ideas but how much of our green park do you need to pave?
- I do not like the interlocking brick path. And I worry the benches might have anti homeless arm rests
- I don't like the tiling. It's too streetscape for a greenspace.
- Concrete is the very worst walking surface for aging joints.
- I am absolutely disappointed in the City of Toronto already this summer for paving over a dirt route through the park that had been in existence for perhaps 50 years. This route was natural to the pedestrian foot traffic and the resulting asphalt is now wider than a city sidewalk, including an absolutely unnecessary branched asphalt entrance at Roselawn avenue, where we could have kept grass. The New York Times recently had a feature on cities reducing their cement coverage and increasing grass and trees so as to avoid a 'heatsink' effect. Yet, why in our city, do we insist on paving over a perfectly acceptable natural conduit through the park? And when we do, why does the coverage need to be far expanded past the width of a sidewalk? I'm so disappointed in the city's approach to this park, as if it were a real estate development opportunity.
- Pavers eventually become uneven, tripping hazards. Ramsden Park uses a soft surface (recycled material?) on the path from Yonge St towards the basketball court & rink.
- Please pave using materials that are easily replaced after repairs. Pavers are often cut into or removed for below-grade maintenance work and then patched with asphalt.
- The concrete unit paving and patterned concrete surfacing may make it harder to properly wash off feces. With the dog park and the washrooms being near the middle of the park, there is a high likelihood that feces will end up on the paths instead of in the proper locations. This is already a problem.
- The pathway seems too narrow. This generally ends up in the gardens or lawn alongside being trampled.
- Waste of money go simple path and no anti-homeless benches

- We are paving over our much-needed green space and play areas to create paved areas that we already have too many of.
- We need to explore the use of more porous or semi-porous surfaces for walkways.
- When traveling south from Roselawn, the path takes an abrupt turn to go around the wading pool. This should be smoothed out to encourage walkers to go this direction.
- Will paths be maintained in winter?
- Will the existing walkway be upgraded with the pavers and lighting?
- A central path with access to the west stairs would be appreciated during muddy seasons. The spine is not my priority.
- any new pavement should be permeable
- Are the pavers permeable and how will they be maintained in winter
- Don't really see a need for the pathway.
- Eglinton Park already has desire paths that are heavily used. These new paths are good for people with mobility issues but they don't follow the existing desire paths and so will likely be ignored by those who have been using the existing pathways to walk through the park for years.
- How wide is this path? Looks too narrow in the plans to be the central promenade for an area with so many users. The spine should be designed to promote a circle. Up one side and down the other.
- I would like to see the existing pathway running along the eastern boundary maintained all the way from Roselawn to Eglinton.
- Just pave normally. Doesn't need to be artistic. What a waste of money and time. Lighting is important for safety. We don't need more benches. There are plenty of places to sit. I think people enjoy sitting on the ground as well.
- Love the aesthetic and it looks gorgeous. I think the windy path is in the way and inconvenient
- Looks great. Not sure the extension around the splash pad is required
- Lukewarm on the idea of the patterned concrete surface
- The central path is not a direct route between the west stairs and the exit onto Orchardview Dr. People will always take the direct route in front of the arena and will not swing around on a curved path.
- Concerned it might look too "concrete " and not soft and park-like.

Bench Design and Amenities:

- The park needs more seating.
- I know the reason for the extra arms along a long bench, but they are so unfriendly.
- Against my better judgement, the benches we have do just fine. Wood does not hold up to winter.
- Bench design is impractical and costly. Keep them simple
- Are park benches situated for sun and shade?
- I don't like the benches. They should not have armrests in the middle- terrible idea. Just at the ends Love the idea of benches though.
- Could use some planters and trees
- I prefer the composite material used in existing benches, which seems to be much more durable than wood.
- I would like more homeless friendly architecture, no bars between benches that make it impossible to sleep on
- More seating. Much more. There are never enough seats along the north and east sides of the park.

- Seniors and people with mobility challenges will find the benches uncomfortable and unwelcoming. Also, stairs will prevent these populations from accessing the park.
- Straight back benches are more comfortable, especially for older people or those needing support.
- The bench design proposed is anti-human. I'd like to lay down sometimes, my partner likes to lay down on my knees. Human stuff.
- The benches must not be constructed with the goal of preventing the homeless from sleeping on them.
- Uncomfortable-looking benches-seat too broad for smaller people. One would have to lean/slouch back to reach any back support. Lighting too modern- I prefer traditional.
- Want to make sure the path is senior-friendly. Needs many benches and spots to rest. Benches at height for seniors to sit and stand easily.
- You do not indicate the number of benches — this is important for seniors.
- No hostile anti-homeless architecture please. Let's keep the park open to ALL and have benches without central "armrests."
- No hostile architecture like those benches with armrests between seats show.
- Seating areas to be shaded. Not full exposure to sun.

Greenspace and Layout

- I don't want more green space taken away
- I worry about the maintenance to keep pavers accessible as it's not uncommon to see them shift through freeze/thaw cycles.
- I'm not in favor of further subdividing the park
- It appears that a great deal of green space is being covered. Isn't this contrary to the City of Toronto's position on Greenspace?
- Keep limited park surfaces natural. Paving and lighting are expensive and require maintenance.
- Longer walk for larger population, apt. Dwellers to bike walk south
- Two things: one path that is missed is from the stairs and past the arena, the off-leash area is blocking this route and the route through the gathering space is quite circuitous. Second point, the pergola. I don't quite understand its purpose given all the shade trees in the area. As well, does the pergola create a barrier to the safe use of the ball diamond?

Lighting and Safety

- I have doubts about the additional lighting along the paths in the interior of the park
- I like that there will be increased lighting for the pathway here, but please ensure that the lighting to be used will direct all light downwards, and will not contribute to the light pollution that plagues this city
- I like the lights! Will allow evening XC skiing around the park!
- More light is needed
- make sure that the path is well lighted
- Seems overly expensive / unnecessary/ a shame to break up the current green space.
- The park needs lights, and the pathways are aesthetic.
- There is a need for surveillance cameras.
- Worried about light pollution.
- More loitering will be an issue

General Comments

- The pathway you show here is not clear what is new and what path is already there. Near the parking lot is already a path as you know up the community center and yes that needs to be cement or rubber. You are suggesting a path from the parking lot along the baseball diamond up to the stairs and no, it's not needed, keep the grass cuz this space is used by TAC sports, etc., and so kids have grass to play on. No path is needed from the parking lot up to the stairs near the ball diamond and grass is best for children to run on and soccer to be played, a path is more work to maintain and cut grass around, grass is best. Spell out DOLA here and have everything self-explanatory. What does this mean that you wrote? 'Inspired by the historic and buried Mud Creek.' Don't use those benches with slates of brown metal because it is a graffiti area that teenagers will spray paint on. This space is awkward to write in. Please improve your survey.
- Who has the right of way? Will cyclists be required to have warning bells on their bikes to alert pedestrians?
- Aesthetics are good, and I like how the light does not spill (night blindness is a problem if there is glare). Question: if we ornament the paving we can put mosaic symbols of the Wendat, who had a village right there.

When considering the proposed design option and improvements for the central gathering area, how satisfied are you? If you chose 'somewhat satisfied', 'neutral', 'somewhat unsatisfied', or 'not satisfied' for the previous question, please share why below.

Seating

- Actually I love the design but will it remove the picnic bench/bookable gathering spaces?
- Are there places to sit and eat?
- Benches with straight backing should be included
- Curved benches are nice but I feel like they spread you out too much. If I'm in a group of people it would be better at a picnic table, more intimate. Both are fine though.
- Don't think it's wise to have it so close to the baseball diamond.
- I feel like more seating is required for the park but functionally make sure it has sight lines for parents with kids playing. The most regular "gathering" is for large families or groups to hold birthday parties etc. I'm not sure this feature meets that need - may look good but not be overly functional.
- I like the idea of more sitting but would prefer conversation seating.
- Love the bench. But interpretive panels are unnecessary
- Long benches are not family friendly, also need a larger area for seating, tables. etc.
- Worried about long curved benches being inviting spaces for vagrants to take up residence.

Paving

- Any use of concrete is counter to our goals of creating porous pathways.
- I don't think this park, which is the largest greenspace in North Toronto, needs to be paved over with tiling.
- I hate to see more grass paved over!
- I would prefer less architectural features in favor of plants critical for pollinators, feeding and protecting birds and providing options for them to rest and roost. Yonge & Eglinton has become a concrete desert. This park should counter that.

- Is there a dedicated area of grassy land for tai chi or outdoor yoga etc.
- No big on concrete
- Too much concrete.
- Too much paving.
- No, no, no! The park should be for grass, trees, flower beds, and simple benches. This particular bench design shown is horribly uncomfortable and unusable for elders. Likewise, we do not need decorative elements.
- All paving should be permeable.

Gardens and Greenspace

- Hoping for lots of old growth trees in the green space.
- I am always looking for links to nature and to history, so if the panels let us interpret, then we can do that on them. As for the meeting place, will there be shade? Hot planet: shade will matter.
- Forget the panel and posts, great for defacing with graffiti, we do not extra stuff, it's not environmentally friendly, keep it green
- I love the pollinator plant piece but will this area be unusable to sit with bees and wasps? Is it in the right location?
- It looks beautiful. I only put "somewhat satisfied" because I wanted to make sure that there will be trees planted for shade and wind breaks!
- Need to see the interpretive panels....it appears to make a wall, which is not great. Would rather have more trees in the area
- Please use NATIVE plants and not just pollinator plants. They are important for the ecosystem and require less maintenance once established.

Safety and Accessibility

- I hope that there are clear site lines to this area as it will be a hangout spot for teens. You want to be able to see what they are getting up to.
- Lighting should be very minimal.
- It seems welcoming for young people and families but not for seniors or people with physical challenges

General Design and Layout

- I love most of the details, just the lack of a direct path from the stairs to the arena and Orchard View Blvd. During our walk-through, Tanya mentioned that one of the reasons for relocating the lower staircase was to improve line-of-site view of the stairs. And yet, all access to the stairs is now through a convoluted route - the design doesn't allow us to access the stairs by walking along the base, and it doesn't provide for direct access from the arena. That seems to be a failure of design.
- I would like to see the gathering area farther away from the dog park.
- It looks a bit small, maybe a little bit bigger gathering area
- It's kind of boring
- Given the size of the park and its multiple uses, the idea of this type of central gathering space does not make sense. Location is more a place to reorient than place of repose.
- For gathering purposes, I hope some tables will be in place
- Gathering spaces should be kept far away from spaces where dogs will be dropping feces (like the dog park), not right next to them.
- The area seems to be pointing towards the center but with no actual focal point at the center. This could be a good opportunity for a water fountain/feature or a historical statue of some sort.

- Well thought out and visually appealing.
- Would be improved if it were moved further from the parking lot and buildings. It should be a quieter, calmer space.

Other Park Features

- It isn't clear whether garbage bins will be near. Those long benches tend to become strewn with garbage and are very unappealing.
- Is the current parks/washroom building remaining? If so will it be upgraded and fit in with the new park design?
- Takes away from the park feeling. It's ugly especially the posts. This is an unnecessary waste of money.
- While the interpretive panels and posts are an interesting idea, I am concerned that just like the interpretive panels put up on the nearby beltline trail, the panels and posts will attract graffiti and posters and ultimately just become abused and unattractive symbols of what might have been.
- I'm not sure what interpretive panels are. I hope feature 1 is not too tall.
- Would add additional water fountains instead of interpretive posts.

Maintenance

- My concern with these types of features is will the city have a budget to maintain the structures created
- Concerned about the featured lighting and the cost to repair after damage.
- Do not overdo it, less is more. If you are going to build a nice facility you will need to maintain it.
- Easy vandalism from police access
- I like wood for benches but in my experience it is more easily vandalized and broken when compared to the composite material used in existing benches in the park.
- Would like more encompassing of total park and fewer rooms. Will someone maintain the gardens? The previous natural garden was horrible.

Opposition

- Unclear why the central gathering space is needed. There were other better uses of the space.
- We don't need another gathering area. It's more pavement in a part of the city that needs green space
- Waste of money and dumb. Add useful things.
- Unnecessary.
- Put the gathering area at Canada Square or the new park on Castlefield.

When considering the proposed design option and improvements for the DOLA, how satisfied are you? If you chose, 'somewhat satisfied', 'neutral', 'somewhat unsatisfied', or 'not satisfied' for the previous question, please share why below.

Size of the DOLA

- A larger off-leash dog park would help prevent surface erosion
- A waste of space and taxpayer money. The area is small and the only ones using it will be the dog walkers with their 5 days per person

- As mentioned, way too small. Also would be better to have grass or grass and mulch in different areas. Also another additional water fountain which is more hygienic would be beneficial. Similar to a human water fountain
- Can you make it larger?
- Concerned the area is too small for the quantity of dogs that use the park
- Consider having the dog park extend up the hill and/or into the sloped ravine/ forested area to allow more space for dogs.
- Dola is too big, should be a smaller area and on a corner of the park.
- Ensure it's large enough for the number of users.
- hope it will give enough space for the dogs to have a good run
- I think the dog area is too small for this community. There are lots of dogs and the proposed space doesn't provide room for this volume of dogs to run around.
- I would like to have a larger area, with a separate small dog area. I think the fountain should be inside the fenced-in area.
- Looks too small
- Make the dog area smaller so tobogganers can toboggan. We need toboggan space and running in the summer
- Larger area to be able to divide for small dog would be ideal
- Needs a bigger space. Lots of dogs and it helps to play nicely and create a safe environment for dogs and dog owners.
- Not enough space for dog park
- Not very big. Will owners keep dogs ON leash outside of the area?? off leash dogs will attack, why don't you put in a proper toboggan hill??
- Not large enough
- Reduce size
- Should be a smaller area. Park should maximize space for kids and families to play
- The area is too small and doesn't consider separated areas for small and big dogs.
- The area is too small. There are often only dog owners in the park and you are forcing them into a small area. It needs to be much larger.
- The design seems great, but placement at the bottom of a popular sledding hill is dangerous for kids.
- The DOLA needs to be larger to incentivize use of the DOLA instead of the sports fields, especially by high-activity dogs that need to run long distances and chase balls.
- The park is small without a small dog area. To give you an example: my dog is small and loves to play fetch. She is unwilling to play fetch close to larger dogs though as they either steal her ball or intimidate her from running as she worries they will chase her and that she will be unsafe. Without enough space to play apart from larger dogs, or a designated area for playing fetch, the dog area won't perform the function it is intended for. This is just for one dog. There are often 20-30 dogs in the park at a time. The dogs need room to be separated and to play in independent groups or alone
- A lot of casual summer activities take place here, like picnics, casual playing. The north part of the park is usually full with organized sports so isn't available for casual activities. I'm concerned that we will lose this area to the OLA
- Absolutely not. To me this would be lawsuit-worthy if I could afford to. The park is supposed to be an open, common, democratically accessible area for ALL community members. A dog park renders this piece of the park - like all other 'activity' areas - unuseable for others. Outrageous. If people want to walk their dogs, they can do so wherever they like in the city. I absolutely oppose MY green spaces being taken over by animal owners.

- This is a set up for dog fighting in too small a space, and messy mulch because it will be difficult for owners to adequately remove feces. A dog walk, like at Sherwood, that meanders around the ravine would be far better for an off leash area and/or you need a much bigger grassy area where dogs and owners can run, and play with balls (mulch is also not conducive to fetch!).
- too large
- Too small, people will still use the field
- Too small. Dogs and dog owners won't be happy
- Way too small, needs to be larger to accommodate the volume of dogs or it will eventually become unused.
- Way too small an area. Bound to have dog fights in such a small space.
- What size are other off-leash areas? it's recommended to include that. don't have an off leash area blocking the bottom of the hill so kids can and do go tobogganing. remove your posts and signs in between trees saying 'no tobogganing' kids do it anyway and you're going to have a lawsuit from parents who have injured kids crashing into your somewhat new signs and posts
- Would prefer larger size
- With peak demand of 50 dogs and sustained demand of 10 to 20 dogs an hour all day the wood chips will be soaked in urine. Rubber chips are a little more expensive but would accommodate the intensive use.
- With all the dogs in the area, the off leash park should be larger

Location

- This area is where the kids slide on the snow
- This seems like a nice resolution of various concerns about the DOLA. It is good that there is still a provision for dogs to be off leash, but without impacting the sports fields.
- Too close to other activities sb on top of the hill in the south west corner
- Too close to playground
- Too close to Playground and wading pool. People take their dogs off the leash as soon as they enter by Eglinton or Roselawn so put the dog park near the basketball court
- The off leash dog area should be located much further away from the sitting /gathering area- further away from the centre of the park- closer to where the 2nd baseball diamond is (which I believe is being removed).The dish is fine but not the location . Too close to the centre. It's a very large park and the dogs can be farther away from where the kids and others gather.
- The OLA is a fantastic idea but the location eliminates the best tobogganing area in the park. What is the plan to replace this and create a safe sledding area?? It is one of the only parks suitable for this classic winter sport in the Eglinton Park neighbourhood.
- Should be somewhere in the park corner. Not everybody likes this stuff and they will need to interact with it. I understand that it's a bit late for change.
- The dog park should not be in the middle. Dogs will have to traverse half of the park just to get there, leaving too much opportunity for feces to be deposited on the paths. There should be multiple small dog parks near Eglinton and Roselawn, so that dogs don't need to be brought through the park. There is already too much feces on the paths and grass.
- Should not be in the centre of the park
- The area is too large and too close to the bottom of the hill. Post and paddle fence does not provide a very safe barrier as it seems smaller dogs could be able to go through as well as other animals and that children could be able to reach in - some sort of better

barrier would be much safer. There should also be lighting along the path between the DOLA and the baseball field.

- wrong location for the off leash area. This area is heavily used by park users in the summer, for other activities.
- A off leash area is needed, but not at the foot of the hill to block tobogganing
- Bad location at the bottom of the hill invites disaster during tobogganing season. It needs to go somewhere else.
- Move the off leash fenced dog park to the west to allow for a larger circuit promenade.
- Do not want a dog off leash area in the middle of the park. Either don't have one or put at the corner of the park
- Dog area should be much smaller
- Dog off leash area is too small and I would not use it if I had a dog.
- I feel the dog park is too close to the walkway, gathering area and baseball diamond. Some people may let their dogs off leash before they should and too close to lots of people.
- I frequently walk home from work through the park - Orchard View, walkway along the front of the arena, across the park and up the stairs to Oriole Parkway. I would like to see a proper walkway, with good lighting all along so that I can use that route in the evening at night. And the dogs-off-leash area be segregated from the walkway.
- I own a dog with little to no outside space and appreciate that a dog park is included but I (and my kids) also really love the toboggan hill and worry about how close it is to the bottom of the hill.
- I think the design is great. I just wish a better location had been picked. If you don't like/have dogs, or are afraid of them, this can diminish your enjoyment of the park.
- Is it necessary to have a leash-free zone for noisy dogs in the middle of the park?
- I'd prefer it on the west end of the park away from the seating & nature.
- Is it possible to make it a little smaller on the southwest side to allow the kids to still use the toboggan hill safely?
- It would be good to enlarge the DOLA so that it includes part of the hill. Throwing a ball up the hill is a great way to exercise large dogs. We love the dog fountain, so we are so glad you are relocating it to be part of the DOLA. More play equipment is needed. There should be at least one more entrance into the DOLA from the west side.
- Access to the DOLA should not open directly into the pathway as it causes congestion and conflict with through users of the path.

OLA Features and Amenities

- Would prefer ground cover other than mulch
- A space for dog owners to walk and socialize their pets without interfering with others' enjoyment of the park
- Do not need play equipment. The park is too small. The fences will not keep the dogs inside. Easy to jump if only four feet high.
- Don't like mulch. I know with my dog, she prefers grassy areas the best. Play equipment is unnecessary...they are dogs. Maybe a smaller dog would go on it but there is no way a big dog is going on play equipment. I also think that the area could be bigger (I love the current size and how spacious the park currently is to throw the ball - easily the best park in midtown Toronto for dogs). I also like how the park currently has a hill, providing more experience for dogs. Don't love the design of the concrete (kind of ugly)
- Don't think a mulch area is what dogs want to run around on.
- Eliminate Play equipment for dogs - totally unnecessary.

- Fence in 1 is probably too low; some dogs could jump it. And it shows grass around posts, but the dogs will kill the grass with their urine. Expect little vegetation. As for the sledding hill, see my comment above.
- Fountain should be inside the DOLA and there should be an ability to wash down the area in the summer from dog pee
- Given how small the dog park is, I'm not sure why it includes play equipment.
- I don't think you need fancy concrete paving in this area
- is there space for a second drinking area for both humans and dogs like at Neshama park (there is a human and dog option for a water fountain)
- It is way too small. Eglinton Park is currently used and loved by many dog owners. The dog park should be at least double this size for it to be remotely usable for dog owners.
- Make sure there is shade and seating within the dog park
- It's missing trees for shade, shade structures or shade sails. Dogs need shade on hot summer days.
- More benches would be good and mulch is very dirty and needs replacing each season so if there was another durable surfacing option that would be great. Also play equipment is a nice idea but is an unnecessary expense as it won't be used and is just another thing for dogs to pee on and be maintained
- More trash cans are needed.
- More trees please
- Not sure about dog equipment but there seems very little according to the map- should there be more? (I'm not a dog owner yet)
- Perimeter fence looks too low. Dogs can jump out.
- Plan doesn't appear to include a separate area for small dogs and puppies, and I'm not a fan of mulch in a dog park. Pebbles make a much better and cleaner surface (similar to the park near Bayview and Cummer). Another alternative would be turf or fake grass of some kind.
- Plant some trees in the area for shade
- Please have separate pens or a fence for separate areas for large and small dogs
- Post and paddle fence (at least as pictured) will not suffice to keep dogs out of the rest of the park. Fence slats must be kept close together to contain off leash dogs within the area. Consideration should be given to placing the dog fountain within the off leash area - otherwise owners will let off leash dogs out to drink water, guaranteed.
- The dog fountain should be inside the park. What assurances do we have that dogs will not be off leash outside the designated area?
- The dog fountain should remain
- The fence looks too open, looks like it would allow dogs to get through the openings which would not be good if they are unleashed. Also, as stated in other survey areas, I fear wooden benches are too susceptible to vandalism and breakage and that is why I prefer a composite, more durable material.
- The dogs all love the fountain so please make sure it is included somewhere in the park close to the fenced in dog park area.
- will shaded areas be included & sitting areas?
- Wood mulch isn't great for small dogs, would prefer grass
- Would like to have a dedicated area for small dogs for their safety.
- Would like to see more examples of the fence. Although the aesthetics of the fence, the height and security of the fence is a concern.
- You need to make sure that the double gate system is secure because at other dog parks in the city it is not
- Will the dog areas have fences to prevent them from running out of them?

- The corners are concerning as i would be concerned the dogs could aggressive with other dogs and fight in the corner
- The provided pictures of the post and paddle fence doesn't look like it would hold small dogs in.

Maintenance and Enforcement

- How frequently will the mulch be replaced? Some dog parks in the city become mud pits because they're used so frequently, and/or they're located in an area that naturally collects water.
- How often will this site be maintained?
- I only accept the idea because it's safer for small children and some adults to have dogs contained in an area while they are off leash. I hope this will not cause more dog poo in the park.
- Key will be enforcement and ensuring dog owners cease using the grass as an off leash zone.
- Not sure it will be used. Currently at any time you enter the park dogs are running around on leash. There is not any enforcement of the bi-law.
- Already explained at the beginning this will become a smelly area, I don't see pet owners stop using the park for their dogs outside the ola and the noise from barking dogs will take away from the serenity of the park especially if you are building area for meditation it seems counter productive
- Dog areas smell of feces and ammonia. This one is too close to the children's play areas (baseball field, outdoor skate and playground). The odors will waft with the wind particularly in the summer.
- Please ensure dogs are on leash when outside the off leash area
- SATISFIED BUT ALL AREAS OUTSIDE UNLEASHED DOG AREA MUST BE BYLAWS TO REQUIRE ALL DOGS TO BE LEASED
- Enforce the existing law and then everyone will be happy. (I am a dog owner who would like to walk my leashed dog through the park. We should not pander to people who won't follow the rules of leashing their dogs - they are still going to use the larger open areas when there are no active permits.
- Short of building a fence around the off-leash area, I foresee enforcement issues.
- The entire park has become an unofficial off-leash dog park all day every day with no by-law enforcement and people harrassed by uncontrolled dogs. It is hard to imagine this will stop with this introduction without enforcement.

General Comments

- Very needed! Right now dog owners just let their dogs run unleashed all over the park. More enforcement needed.
- Waste of space and money!
- Will be good to have a designated off leash areaWrong design, too small, should be further up including the paths and trees.
- Would prefer no off leash dog park
- To be honest, I've never seen the need for the off-leash area. Dog owners use the park outside of the main field use times and seem to have no problem with their dogs running free. Unless there's a lot of supervision, I can't see dog owners giving up the expanse of the park for the confines of the off-leash area. But I guess at this point it's 'wait and see'. I still object to the off-leash area being enlarged simply to provide access for maintenance vehicles at the expense of general park users.
- The dog solution we currently have is fine. The park is being used properly

- The dog park is against park policy. It is not multipurpose. There is no dog association as required. It's a single user space in an area that is currently used by many. It does not promote human activity.
- I'm really happy there is a dog park but also hope that means that people will not be using the rest of the park for their dogs and people can use it without fear of stepping in mess or being harassed or bit. I would hope the city starts to recognize that there are too many irresponsible dog owners in North Toronto.
- As long as it's safe for both humans and dogs I'm good
- dogs are always a nuisance in the park
- I don't have a dog
- I don't have a dog
- I don't own a dog.
- Official dog area sorely needed.
- Once you have an official off leash areas dog owner consider the whole park to be off leash accept
- I do not expect that they will stay in that space, they currently run all over the playing fields and the hill. Unless it is patrolled a lot of the dog owners will continue to use all the outside area.
- Don't plan to use it. Will dogs stop using the whole park? I doubt it. More chopped up space.
- I don't think it's a good use of space
- I know the process has gone on for some time. But from the outset I've felt that the park is over-programmed and too deterministically programmed.
- I think parks should be for people not pets
- Not interested in having a DOLA in Eglinton Park.
- Not interested in this beginning a dog park and overcrowded with professional dog walkers
- No issue with the design, but as a local resident I don't like the idea of a DOLA in the park. It will stink during the summer months
- Not required as dogs are already off leash during certain hours

When considering the proposed design option and improvements for the stairs, how satisfied are you? If you chose, 'somewhat satisfied', 'neutral', 'somewhat unsatisfied', or 'not satisfied' for the previous question, please share why below.

Pathway and Stair Design

- A winding path is preferable to stairs, as it would give more opportunities to avoid feces that have been deposited there. The bike access ramp on the stairs takes up room that could be used to step around feces that was deposited on the steps.
- given the long distance of the granular path, it seems likely many people will continue up or down the hill without using the second set of stairs
- I am skeptical of the proposed granular path
- I like the two part staircase. I dislike that the bottom landing is immediately adjacent to the dog area. I'm a frequent user of the stairway and this is a very ungracious way to land or start the journey up.
- It looks like it's further to walk than the current stairs. Worried that metal stairs are slippery in winter or when wet. Not sure the dog will go up that style of stairs.

- The premise of moving the stairs to improve sight lines from within the park seems to be negated by the lack of a direct physical path from multiple areas of the park; the only direct line of access is provided from the existing playground. Coming from the community centre or the arena requires a convoluted pathway. This is just begging people to climb through the garden or over fences. I'm also not thrilled that we seem to be at the final approval stage without any understanding of the large platform that will bridge the gap between the top of the North stair and the access to Orchard View Blvd. Will it be unsightly and you're afraid to show us details fearing the response? I'm also a little confused by the illustration showing so many light fixtures... this is very different from what was discussed during the walk-through. At that point, the City was lowering community expectations due to maintenance access, four lights would be the most we could expect. What's changed is that the drawing shows 7 lights along the staircase (and for some reason doesn't include one at the bottom where it's most needed?).
- Why is it so long? The current stairs are straight up and work. The long stairs seem excessive.
- Why move it?

Accessibility

- Better accessible plans should be put in place to accommodate accessibility issues for weight bearing disabled neighbourhood. Wider, deeper steps, gentle slopes and ramps.
- I don't think 'New accessible path connection to Orchard View Blvd. ' is necessary when stairs are not accessible.
- There are already multiple accessible ways of entering the park.
- Stairs with a bike ramp on the right side is assuming everyone is right handed. That is not the case.
- Should have ramps instead of stairs for better accessibility.
- These are not good enough for people like me with mobility issues.

Bikes

- Stop catering to bikes. There are t that many cyclists in our area and now the traffic is horrific on Eglinton where no one is using the bike lanes! like the bike ramp
- The bike ramp will not be used. Bikers will use the park exits near Eglinton Avenue or Roselawn Avenue.
- Bike ramp on the stairs seems like a tripping hazard and I also think it will lead some to engage in unsafe behaviour (i.e. trying to ride down it). Just normal stairs please.
- Great to have the bike access ramp included in the stair.
- I don't like the idea of bikes messing up the grass so why encourage that with a bike access ramp?
- If a bike access ramp is included in stair design, stairs should be widened. It will be difficult for people to pass each other if one has a bike with the current proposed width.

Maintenance and Safety

- Prefer the wood staircase. Concerned about how slippery the metal one will get in the winter.
- Concerned about slipping and falling on the granular path if it is not properly maintained.
- I use these stairs a lot so up grading is important , also the ground at the bottom can get quite icy in the winter.
- I understand that the lighting will make some people feel safer. But I personally prefer less lighting to better see the night sky (star gazing)
- Is there a way to make the stairs less slippery when wet (it is currently a hazard)

- Lighting on the staircase should not be 'proposed'! Lighting is essential for the stairs and is paramount to safety! The bike access ramp means there is only 1 accessible handrail and should be located outside of the stairs. Are the stairs going to be year-round accessible?
- make sure that it is well lighted
- Please ensure there is good lighting all along the path and stairs
- Please put lots of lights on the west stair area so that it is safe at night.
- Stairs appear very steep
- Stairs look steep and dangerous in one photo
- Stairs look very steep for bikes.
- Will the varied materials be maintained throughout the winter months when icy and covered in snow
- worried about falling

Material and Aesthetics

- Looks fine. But not pretty. Doesn't really go with the neighbourhood aesthetic. Why not brick or wooden stairs? It's so industrial!
- The design can be more aesthetically pleasing
- This will be safer, but the metal is much uglier than the current wood.
- Ugly and unnecessary. Waste of money
- Ugly ugly ugly. Where's the ramp for accessible access?
- Worried about light pollution
- Would prefer wood to metal for dogs
- Unattractive... consider Cor-10 steel. Don't like the metal look.
- Metal stairs are a bit sterile
- Metal stairs are dangerous in rain and snow
- Metal stairs are not winter/freezing temp friendly because they become slippery
- Metal stairs seem like a hazard in winter. Wouldn't use them
- metal stairs will be completely icy and slippery in winter! Who is maintaining them in the wintertime?
- No character or charm with the material choice, very industrial and almost clinic
- North side of the park is Roselawn where probably over 90% is flat. Why would stairs be needed? The stairs in the images are ugly and commercial - more importantly where is the ramp for accessible access where the west stairs are??
- Once again, our approach in this city is a 'prison architecture' aesthetic - we could have a decorative staircase, but for some reason always choose the brutish functional designs. Why must our parks be uglified in this manner? There is no shortage of wrought iron workers in this city who could create something better.
- Stairs shown here, all metallic, blend less well with the vegetation. The present stairs have a litter problem: people throw things overboard and it is hard to fetch. Not sure how to overcome that.
- The stairs are only designed for utility. Along this long stair there should be places, where there is seating, different lighting to gather and take the views and be in the forest. The new ramp at U of T Scarborough Campus does this better. Why not allow the bottom of the stairs near the dog park to open up and form like an amphitheater as part of the central promenade?

General Comments

- Don't know what to think about this design.
- Don't really have any comments on this element
- Don't waste money here Seldom see people use stairs here after 30 years residence
- I can't quite visualize and will not likely be using these stairs. Looks good.
- If they get used it would be great! Most kids tramp through the park
- Is there enough lighting?
- It's about time!
- It's too rare and too long since I've used that stairway to have an opinion.
- keep it green.
- Looks good , I wonder how these stairs are acutely used, considering how much that cost.
- More shade trees please.
- Need deterrents to stop skaters and boarders from sliding down handrails.
- Not clear why there are now two flights of stairs. Is it to take advantage of the current earth path that runs north/south halfway down the existing wooden stairs to give a final landing away from the bleachers? Stair treads should be open with anti-slip grating.
- Please add an entrance to the DOLA from the bottom of the staircase.
- Seems much bigger than the current staircase- is there a reason for this? Will it remove current trees?
- Solid cement stairs are much better for dogs. Some dogs are frightened of open stairs and refuse to use them.
- Steep and narrow staircases are not useful for bikes with a bike access ramp.
- The current stairs location is good, why change it. What needs addressed is the low spot at #4 on your plan as this area gets muddy.
- The stairs should be improved. It's not something I will use regularly.

When considering the proposed design option and improvements for the Community Garden area how satisfied are you? If you chose, 'somewhat satisfied', 'neutral', 'somewhat unsatisfied', or 'not satisfied' for the previous question, please share why below.

Maintenance and Financial Concerns

- A basic fence is fine. No extra money needed.
- Can we afford the maintenance costs of these things?
- It needs to be better maintained. It has been a MESS for years.
- Needs to be larger and better cared for.
- Not a priority.
- Waste of money.
- Waste of money on things no one wants.
- What happens to the vegetables? Isn't it illegal in the City to take plants etc. from parks?
- What is the purpose of the community garden? Is it to provide a food source? An educational source? Will there be a lively and long-term commitment to maintenance? That sunny location has potential but is currently an eye sore.

Lighting

- Once again, please ensure that the lighting will be of a type that will minimize light pollution. Also, how high is the low steel fence? I hope it won't completely block views in and out of the garden? The sample photos are unclear on this point.
- Can you ensure that the path from the north side of the swimming pool to the Southwest corner of the park is well lit? During the ECLRT construction in particular that path felt very unsafe. It's better now that the construction hoarding is down, but the SW corner is still not lit well.

Safety and Security

- Due to this area's isolation, I have witnessed people doing drugs here. This spot feels unsafe and should be addressed.
- Ensure sight lines are maintained for safety. And good flow through traffic. The area in the existing garden feels unsafe at times.
- The fences should be higher. The gardens' proximity to the path leading to the dog park risks dogs destroying the crops. Fecal contamination of the grown food is also a risk. There should be more separation between the gardens and areas where dogs will likely be.
- This area is mostly used by a group of 4-8 young adults who smoke, drink and litter there.
- This area is mostly frequented and used by smokers due to its design element. I would advise re-developing this area into something else more family friendly.
- This is a hangout for teenagers at night who seem to listen to music and smoke pot. I feel unsafe walking through this area at night. Is there a way to address this?

Aesthetic Preferences

- Bench looks uncomfortable for small people.
- Don't like the design of the interpretive fence--the one on top right with many holes (corn?) is best.
- I like flowers. Bergamot, Irises, daylilies, dahlias would be good.
- Proposed bench design is anti-human.
- Remove the existing 'canoe' planter as currently is neglected and just an eye sore.
- Seems unnecessary and subject to vandalism (graffiti).
- Should be bigger, and more of a ribbon running alongside the entire path, not tucked in a corner.
- use porous flooring rather than concrete pavers.
- What the heck is an interpretive fence? The garden has been the best improvement in all of the Yonge and Eglinton area in years.
- Won't use, don't care.

Use of the Community Garden

- Great to have the input and continuing use of the people who will be taking care of the garden.
- How much utilization of the existing garden is there?
- I love this garden and visit it often. If it could be made bigger that would be amazing.
- I saw minimal usage and lack of maintenance of the prior garden. Can we assume that if the same pattern prevails on the proposed garden that this area can be converted to another use.
- I would love to see a larger community garden to help feed the community.
- This does not really interest me.

- This garden is always a mess. Needs to be some oversight if it's in central areas.
- This garden looks messy and I have personally never seen it being used.
- Unfortunately, I believe this will not be well maintained into the future. Better allocated to enlarging the dog park.
- Unnecessary part for an urban community park. Seems like it's very focused on plantings that serve a small group. Not necessarily a good use of central space. If this is desired, it would be better in a more remote part of the park. Doesn't belong in the middle.

When considering the proposed design option for trees and plantings, how satisfied are you? If you chose, 'somewhat satisfied', 'neutral', 'somewhat unsatisfied', or 'not satisfied' for the previous question, please share why below.

Plant Selection:

- All new plants should be native species, and should be of local origin.
- Am satisfied... like the tree selection. Planting native trees as appropriate.
- Anything Native except for Honey Locust Trees.
- Focus should be on planting native, disease-resistant plants that offer habitat to native urban wildlife and birds.
- I like trees not concerned with design as long as the species are native and robust.
- Please ensure that plants chosen, particularly medicinal, are not toxic or poisonous or dangerous for people and pets.
- Please include as many native plant species as possible.
- Thank you for exclusively choosing NATIVE plants.
- Thrilled that you are planting native plants.
- Well thought out and a good variety of native plants.
- I don't understand how wetland, prairie, and forest plants can be mixed together in such a small area.
- I would add birch trees in order to inoculate Chaga to be used in Indigenous plant medicine.
- Super to see. Let me put in a word for the present cup flowers, rather rare, and native, as they are a very popular source for seeds for the park's many finches in August, prior to migration.

Planting Locations:

- Berry and fruit plants in a park sound messy and will attract rodents and unwanted animals.
- Concerned that plantings are shown where the future basketball court will be. Shouldn't be planting trees in areas where they will need to be removed.
- Wetland plants are not suited to this area, it is not a wetland, it is a clay basin. Native plants are very fussy about the soil and conditions unlike non-native plants that tend to thrive in many different soil types.
- I do appreciate the plant selection and variety. Are any of the new trees to be designated as memorial trees? I'm confused that the design does not include/show any of the trees planted in the sidewalk along Eglinton. Will these impact the proposed trees along that edge of the park? I'm confused by how the design shows new trees adjacent to the outdoor pool - isn't that the location for the next-phase basketball court? Why would you design new tree locations only to have to remove them in the near future?

What's with the shape of the skate spot? It changes from a rectangle to an L-shape from one image in this survey to the next. Is it maybe too soon in the design process to be conducting this final survey?

- The trees should be protected with barriers to prevent dogs from urinating on their trunks. This is already a problem.
- DO NOT PUT TREES AT THE BOTTOM OF THE HILL UP TO THE STAIRS, YOU ARE REDUCING THE SPACE FOR KIDS AND ADULTS AND KIDS GO SLEDDING AND WILL CONTINUE TO DO SO. WHY NOT GIVE THIS TO THE KIDS A SPOT TO TOBOGGAN SAFELY AS THEY HAVE DONE FOR MANY YEARS.
- Treeline at the base of the hill is also an invitation to disaster. You won't stop people trying to toboggan down the hill. A harm reduction approach to funnel toboggan traffic to a safe landing spot would be better.

Specific Plant Concerns:

- Hope 'wild garlic' does not mean 'garlic mustard'.
- I don't want an area that will promote ticks. Please be aware when choosing plants and tall grasses.
- I like the idea but some of these plants, such as the wild garlic, wild leeks are HIGHLY toxic to dogs. Therefore, it's not a good idea to plant them in a park, especially so close to the off-leash areas where owners can't control what their dogs get into.
- Would try and avoid plants that cause severe seasonal allergies like milkweed and ragweed type plants.

Maintenance and Upkeep:

- Plans for maintenance?
- Cost of plants should be \$0.
- Design is nice but upkeep (i.e., regular weeding) is crucial or it will be as unkempt as the current garden.
- Good luck. As with past experience in this park, the odds are that any low planting (such as the wildflowers) will simply become trampled patches of dirt.
- Make sure gardeners know how to maintain it. The current community garden is an eyesore.
- Wonderful idea, but knowing how it will not be kept up and looked after.

Other Comments and Suggestions:

- Given the very high use of the park, and the greatly increased demand it is facing in the near future, I fear small garden areas will simply get trampled. But since this is an architectural design project, not a practical use initiative, that probably does not matter.
- The more trees, the better...we need green spaces in the area.
- We are taking away active play space in an area where it is sorely needed.
- Would love to see more color.
- Great! Why not plant trees and leave out the cement pathway?
- I love the variety of plants. But are you going to have a community garden where people can come and plant and take what they need? Since the cost of food is going up in price. Also, there are so many condos in the area, not everyone can plant vegetables in their building.

If budget permits, are there other features you would like to see in the skatespot?

Skate Features:

- Bank to jersey barrier and quarter pipe with decks
- 3 stair
- A stair set
- Stair set
- Stairs
- stairs
- stairs sets
- A 10' box
- Box jump
- A box at the top of the halfpipe a foot away from the coping
- A bowl
- a bowl and more transition
- A bowl or, having a corner to close off one or both sides of the halfpipe
- Bowl
- Bowl
- Bowl
- At Least a round rail and ledge for each design
- Bowl
- Bowl
- beginner bowl or mini halfpipe
- Brick ledge like the new Christie Pits one.
- A flat ledge
- A flat ledge.
- A Frame is necessary!! You can find a manny pad or bank anywhere we need a good place to practice rails and hubbas
- I'd love to see some stairs with a down rail
- an A frame with rail, pyramid attached to the side (eg: Christie Pits)
- I would prefer a combination of a rail, ledges and manual pads
- A ledge with varying heights
- A rail and ledge design
- Actual skate park like features. Ledges, flat rails,
- Add a box/ledge to design 2 and the park is perfect. Kids need a box to grind that's flat before they skate rails. Thank you
- A Pump track would be great and much more usable to a lot more people!
- I would love a pump track!
- Pump track
- Pump track
- Pump track
- Pump track
- Pump track around the skate spot. It would be unique to this city and a great transition learning tool.
- A mini bowl
- Ledge hubba on the pyramid
- flat ledge
- Flat ledge
- Flat ledge / box

- Flat ledge at least 1.5ft in height parallel to the flat bar
- Flatground ledges
- Manual pad
- Manual pad/ ledge on one side, singular moveable kicker ramp, rails, quarter pipe/ rollin for speed, halfpipe in the back
- Manual pads and ledges are very important. They should both be included
- Many pad, rail, i'd like the many pad design more if the hubbas were just one ledge across the whole thing?
- Curb on top of a bank
- Curved ledge, Slappy curb, long ledge
- Definitely long ledge, manual pad combo and quarter pipes!! All needed in the city, hopefully done asap 🙏❤️
- Elevated pad with small stair set and side hubba/rail
- More curbs or parking block type features and a low flat bar
- More transition that's higher than 4ft. That's all we ever get now. It's a joke.
- Moveable boxes, Ramps or rails
- Quarter pipe
- rail
- Rail in design 1
- Rails
- Rails, jumps
- Regardless of design chosen, a flat rail and manual pad is essential
- Shade and a rail
- slappy curbs
- Put a deck on the designs that have deckless quarter pipes. Would be nice to have a flat bar and a ledge with the same design as well.
- Small manual pad included in design 1
- small ROUND rail
- Some freestyle spot
- There is only 1 flat ledge option out of 4 parks and every park needs multiple
- There should be another quarter pipe opposite the 4' one so people can ride it like a miniramp
- Toronto needs a good euro gap
- wallride spot
- A euro gap
- A kicker ramp with a gap, and/or the roll-in leading up to a quarter pipe of some description.
- A pickleball court or other more flexible use would benefit significantly more residents and users of the park.
- a pump track
- The designs seem to do either a manual ledge *or* flat rail. Why not have both?
- Slappy curbs, basically rounded ledges that are really low so you can grind them without having to jump on to the ledge, you just kind of slap the board against it and it goes in place. It wouldn't be a huge feature but something nice around the side. That or anything really rugged that would be found in the streets and not a beautiful skatepark .
- Lower the Mini ramp to 3 feet with a 4 feet extension. Make sure the final design includes a flat bar, ledge and manny pad. Don't let Canadian Ramp Company build this spot. Their finished work is awful.
- Pump run
- I would extend the half pipe and add a 3ft high section for beginners.

- i would like a half pipe if possible, even though this isn't a feature many parents bring their kids to skateparks as a playground and it can be a safety issue for both parties, if there was a way to incorporate a clear understanding of skaters only that would perfect
- I would like a skate park that permits a pump track or jumps for BMX/ mountain biking.
- Make it friendly to all levels.

Design Specific Feedback

- Add a flat bar to design 1
- An 'A' frame ramp, like in Design 2, but without the rail or hubbas (which are not needed in my opinion as they are only usable by the most experienced and talented skaters)
- An addition of a rail feature to design 1
- An additional flat rail on Design 1. Water, shade structure if budget allows
- another box in design 2 would be sick if there's space
- I do really like design 4 , but would like a flat bar (rail) included if possible
- I like both 3 and 4, the pyramid is something not common at all in the GTA and rail and manual pad is necessary I think for a park
- Design 2 needs a flat ledge. The 4' qp/mini ramp should be lowered to 3' to allow for new skaters to feel less intimidated by the drop. It also makes it harder to hide behind and do graffiti.
- I think design one would be perfect but it has no rail options so it would be good to maybe replace the kickers with the gaps with some kind of rail option
- Please please please add a rail to design one as well
- The second design looks great, however I feel like there should be a ledge off to the side.
- A combination of 1 and 2 would be excellent. Would love a flat rail and a manual pad
- Design 1 and 3 both have qualities. If design 3 would be perfect if it included a manny pad. Currently there are no well made pyramids in the city (that I am aware of)
- Design 1 would be great if a rail or two were added. They can be placed along an edge of the park
- The middle layout of design 2 is good, but it would be better with the 2' bank/3.5' quarter pipe combo on the end that designs 1 and 3 have.
- Flat bar added to design 1
- merge 3 and 2 together.

Other Features and Amenities

- Access to drinking water, bathroom close by, multiple garbage bins around. I'd like to see the skate spot be bigger or at least don't just end the park edges, make the edges ramps or ledges or something. A larger open concrete pad would also be really good
- Lights
- sitting area with shade/weather protection
- Street lights
- benches and bike parking nearby, quarter pipe with deck
- More cement flat ground area instead of grass
- enough trees for shade and seating nearby to watch
- SHADE!!!!!! Some type of awning to block the sun in some sections of the park. If the budget permits to add features please hesitate, the best skateparks are the ones where they give space and are not cramped
- I would suggest a full redesign of the skate spot, awarding it to a company that specializes in concrete skateparks, rather than prefabricated steel ramps. Simpler is better, having clear lines of traffic through the skate spot. Starting with 3 obstacles a

manual pad, a flat grind rail and a grind ledge would fulfil the needs of most users, with additional features at the either end of the park to add uniqueness.

- Water fountain
- Art
- Drinking fountain
- Ensure that 'risk sign' is posted.
- Have you considered removing the Field house and using that space with the concrete for the skate area?
- Tall barriers to keep dogs out, so as to prevent feces from being deposited where the users will be.
- keep it safe, the ground material should allow water to penetrate
- Keep the skateboarders away from the dogs, well done.
- More benches around
- More space. These get crowded and there is not a lot like this, or other stuff for tweens, teens to do for free. We need more of this!

Skateboard Opposition

- No skateboard. Design that would provide activity for a larger group of people i.e. young children, elderly.
- Worry about noise and drugs
- Possible size expansion for more room freedom and creativity, also a few banks and stair sets with handrails would be nice as well
- This element is not integrated into the park and is rather self-absorbed. Can people circulate around this feature? Is there seating to watch the boarders. How will this look over time in the front yard of Eglinton Park? Other small skate parks in the city are rather ugly to look at. Does this need a hedge or planned screen? Can this be done to also make it safe?
- move skate sport further east to align with indoor pool, allow the west area of the skate park to be the dog off leash area.
- No
- No
- No opinion. Like the location. You have forced me to pick skate obstacles that I have no opinion on
- No. I'd like to see it axed.
- No. We don't have any money and you want to build a skate park. Also I said I don't skate so why am I forced to pick a design?
- Noise and more concrete
- Noisy, not interested in the skatespot
- Outrageous. Once again: OUR park, OUR grass, OUR open space, being taken up for a minority of people who can skateboard at any schoolyard or elsewhere. Stop using our parks as real estate development!
- Do not build the skate park. No one in the community is asking for this. I know city staff have been pushing for this since 2019 but please, listen to the people who actually live near Eglinton Park and use it every day. A vast majority of us are strongly opposed to it, even people like me who skate regularly. There are lots of skate spots nearby and ripping out trees to build a skate park (and now apparently a basketball court) is environmentally irresponsible and not reflective of the will of the community.
- Do not need a skate park. Will bring a bad element
- Don't care, I don't see a skate park as a priority, particularly based upon budget allocation.

- Don't do it
- Don't skate
- this is a terrible idea
- Skatespot looks too close to the swimming pool. Noise from boards would be annoying for the swimmers. Same for the basketball court.
- I do not do any of the above
- I do not want a skate spot added
- I prefer not to have a skateboard park because it's just obnoxious. I was forced to answer the question about my preferred skate obstacles (in order to move to the next page), but I think they're all dumb.
- Please eliminate the skate spot. There has already been so. Much disruption on Eglinton. Can't we have grass and trees along the street as it always has been?

Miscellaneous Comments

- Hooray for a pro-teen feature. (I am over 80). Teens need more spaces in the city.
- Glad you put the noise of the skate park near Eglinton Ave
- Unable to answer the above Skateboard obstacles question as I am not interested in this sport, so I just picked the first 3 to allow me to continue with the survey.
- Why are you asking me, a non-skateboarder, to select a preferred skateboard park feature?
- Why is it mandatory to pick 3 obstacles for people who don't skate, understand or have a preference?
- You force a response to preferred obstacles but I and probably other non-skaters have no preference at all. You require a response to continue the survey, so I select any old thing, as will others, making this data unusable...
- I'm indifferent to the skate park. Survey should not force an opinion about specific design features
- Forcing nonusers to select their preferred obstacles is poor survey design. If we are not going to use it we should not be asked this.
- This does not interest me in any way. I had to pick 3 skate obstacles to go to the next page.
- How many trees will be removed to add another paved space?
- I couldn't see a way to avoid answering preferred obstacles, so I just checked the top 3. I don't care.
- I have no knowledge of what makes a good skatespot - please do not include my response to 'What are your top 3 preferred Skate obstacles?'
- I know nothing about skateboarding and randomly chose 3 obstacles as otherwise I could not continue the survey.
- I know nothing about skateboarding but had to choose 3 features to move on - please ignore my choices. Think it's a great location for the skateboarding and basketball areas. Much safer for the children and teenagers
- I know nothing about this stuff and cannot comment, yet I was forced to select obstacles. My choices should be disregarded
- I was required to choose 3 skate obstacles, but I don't skate. Please disregard my selections
- re question about top 3 preferred obstacles - there should have been an answer for no preference, I would have chosen that because I have no knowledge or opinion on this
- I'm not a skateboarder so I tried to skip this question and can't. Please ignore my responses.
- I'm not a skater, won't be using this

- I'm not interested in skateboarding therefore I shouldn't have to answer the last 2 questions ...
- I'm very concerned that the design doesn't capture the existing mature trees that were saved by the community from removal by Crosslinx. After so much effort to protect them, any impact on these trees with the park redevelopment will be deeply upsetting. Please show these trees are protected. I truly don't understand why 'No preference' isn't an option for 'top 3 preferred skate obstacles'. Who set up this part of the survey? Again, I'm concerned that the skate park is shown as an L-shape here and as a rectangle in later questions. And also concerned that the design seems to impinge on space for the basketball court. What noise abatement can be expected for residents living across the street and at 150 Eglinton Ave. West? Will the skate spot and basketball court be inaccessible late at night?

Please share any feedback regarding the proposed Indigenous Placekeeping for Eglinton Park below:

Criticisms of Placekeeping elements:

- Again, see my other comments about destroying the basic, unspoiled nature of the park with all these additions.
- Don't care about Indigenous Placekeeping for Eglinton Park and see it as a further waste of tax dollars.
- Fencing along the community garden should not be included
- get rid of the panels and posts There must be another way to accomplish the same thing Use the real thing not metal that will rust and is costly
- Don't see the need
- I don't think this area should be turned from the play area into something else.
- It is not needed and an unnecessary expense for a broke city to spend money it doesn't have.
- Lol, what a tremendous waste of money. Woke fools.
- No need for this
- Not required
- total waste of money
- Waste of public funds to create these, not necessary

Support for Indigenous Placekeeping elements:

- Very happy!
- Great idea. If the Indigenous people like it, I'm all for it.
- great ideas
- I am not Indigenous and want this area to be acceptable to Indigenous people.
- I am not sure why this is a spot on the map rather than an attitude towards the design of the whole park. Again this should be a part of a central circuit and maybe all the elements in the circuit like fences, planting, seating integrated. Lastly as a non-Indigenous person i am not who should be asked.
- I think the decisions should be largely held by the Indigenous community itself
- Lovely to see this happening. As for symbols, Indigenous people should have a major say.

General Design Feedback:

- I think an expert should make a decision about what to plant. Something that will not take a lot of maintenance, can stand neglect as I'm sure that's what will happen
- I think insects or animal images will complement the native plantings
- I think this is pointless without a ceremonial fire pit. Ceremony is extremely important to me. I've been a master of ceremony for many years, and I feel almost insulted by this plan to overlook the most basic necessity for an Indigenous space.
- Placing this somewhere along the perimeter of the park not right by the main entrance from the parking lot will prevent conflict of people "crossing through".
- Please do not fence in nature. Create natural fences using shrubs and plants - preferably indigenous ones!
- Please include pronunciations for Indigenous names in interpretive naming.
- This fence may not be tall enough to keep larger dogs out. The dog park should be nowhere near sacred places like the gardens. Fecal contamination of these sacred elements must be avoided.
- A low fence will not keep out birds, which can fly, or dogs, raccoons or squirrels, which can jump. This makes no sense.
- We should look to the future
- Why not try to keep the indigenous designs to local flora and fauna? Why add prairie grasses if they aren't local? It's much more educational and respectful in my opinion to reflect what was here that local peoples would have seen.

Other Comments:

- As a non-Indigenous person, I don't feel I have a right to an opinion
- Holds no value to me
- I am neutral - no thoughts one way or another.
- I feel like as a non- Indigenous person, I shouldn't have a say about Indigenous placekeeping
- I'm non-native and I'm pretty much stunned by this question. I don't understand how I'm being asked to select the symbols to be used in Indigenous placekeeping. Please, I thought the design team included Indigenous representation. Please ignore any responses to this question and have them complete the design to suit their heritage.
- I'm not the right person to make recommendations on this. This initiative should be driven by Indigenous voices, not settler's opinions of it.
- Maintenance?
- Not sure a fence is actually needed and natural plants can be used instead to guide people to walk
- Not sure the end product will do the idea justice.
- Should be more.
- Spend less money
- Spend more money on what the overall users of the park want to see.
- The dog area will be more used than the community garden - not sure why so much space for the garden. And it feels like you are trying to make the part inhospitable for dog owners. Is the garden private property or open for park visitors? Or only those that don't have dogs?
- the interpretative iron/steel panel is far from indigenous natural design feature, should explore some green water wall
- This feels like such a lame attempt at trying to say that you are on stolen land and recognizing that. I wish that there was another way to incorporate Indigenous elements,

for example the playground could pay homage to the people who had the land to begin with.

- This page is messy and unclear.
- Why the culture touchstones yet again? Will we be planting willow for the aspirin?

Do you have any final comments or feedback you would like to share?

Skatespot - General Feedback

- I would propose a better spot for the skatespot. For a huge park I don't understand why it has to be situated near the road. Also why the skatespot lack any design or creativity. There needs to be more references to completed skateparks out of Toronto. All the new parks designed lack any fun skate stuff which will encourage the skaters to go skate other stuff and potentially damage architecture.
- Canadian Ramp Company is a terrible company. These concepts are ok but their construction quality leaves a lot to be desired. Their previous projects in Innisfil, Strathroy and Sarnia are well below industry standard. CRC wasn't built to the level of Stanley Greene or Ashbridges Bay Skatepark.
- very excited
- Looks wonderful.
- Scrap skateboard plan. Garden for all people no more concrete
- Love that you're adding a skatepark!
- yes - don't copy Oakville. They are building a terrible new skatepark.
- Like having skateboarding in the proposed area to minimize noise to residents living near the park. Also allows people to enjoy serenity. Ensure all paths are accessible to people with mobility aids, seniors, and strollers by ensuring safe separation from cyclists.
- Please please please as a skater for 20+ years do NOT move forward with these horrible designs. Based on the design, this park would be terrible as soon as a few skaters are there. If it's too full, skaters will be colliding. It could be very dangerous. It would only be good if there are less than five skaters, and if the skater is good at skating mini ramps and half pipes. The obstacles aren't appropriate for learning or intermediate skaters. Stick with ledges, and banks/quarter pipes on both sides. Ask yourself "where will skaters sit and watch others skate the park? Where will skaters stand to wait their turn when the park is busy?" In the current designs they'll have to stand in the grass (getting mud on their shoes, which will soon be on their grip tape, which is awful). You might think "they can stand on the deck and drip into the quarter pipe when it's their turn". Well not everyone has the skill to drop in on a quarterpipe, and if they do, dropping in doesn't allow the skaters to control their speed as they approach the obstacle in the middle of the park. Look at Born Skate Plaza in Barcelona as an example. A good skate park should have a community feel. It should not tuck the skatepark away in the corner. Let the park feel more like an open, mixed-use space. Where a passerby might walk through without even realizing the obstacles are for skateboarding. Toronto is having success with the rink skateparks at Dufferin Grove and Alexandra parks. Communities formed around those parks, long lasting friendships are made. These parks Please do not repeat the mistake of the 8th street park in Etobicoke. That park feels busy when there is ONE skater going fast around the park. It intimidates the younger kids learning to skate, and they either go home, or just sit there smoking weed. Don't over complicate the park, especially if the budget is low. A few ledges of different heights, banks/quarter pipes on both ends. Places to sit and chill on both sides.

- Thanks for putting the time in for skateboarding. Hire a builder who has a strong history building skateparks
- Thanks for thinking of the skaters!
- The east and Central Spine paths should incorporate the skate obstacles throughout the entire length and not isolate skateboarding to one area.
- The newly paved road was a waste of money. Gravel is a better idea and likely cheaper.
- The plans look amazing - we are so excited to see the finished product!
- The questions regarding the skatepark are not that clear, having the park start of with the bank and roll in, followed by the flat bar to right and the funbox to the left would be ideal, the half pipes far side should have a corner
- Skatepark is not looking good, I would like to see other proposals. So much wasted space between features, please get a professional skateboarder to help on the design.
- Skate bowl will have been a great addition, Van der hoof park style.
- Please design the skatepark for functionality and not for ascetics. Correct sizes for the ramps and the quarter pipes. Make it out of good quality concrete for longevity. Get real feedback of the design from skateboarders and skateboard shop owners
- Please give shade at the skate spot and do not over crowd it with features.
- People need space to do things, a bunch of spaces that only have benches and like concrete are going to be boring, try to avoid it. Look at Ranleigh Park for example, it said it would give a lot and it sucks now, even worse than when it was an open field. oh and also please make the skatepark have smooth ground don't cheap out on it because many many people will get hurt if it is not smooth concrete. especially beginners
- make sure the flat ground of the skatespot is flat and smooth and be mindful of where the expansion joints are placed.
- I would have liked to see a combination of some of the designs. I think a box/manny pad, and flat bar are essential. The pyramid also seems like a great idea to include for beginners. The bank that becomes a quarter pipe and the roll in design seem unique but I doubt they would be often used. I would really stay away from the classic tabletop design as I feel it is only accessible to higher level users. Skate parks should be about learning and progressing in my opinion. Thanks
- I can't stress enough how great a pump track would be. Besides that skateboarder involvement is essential. Too many times, here in Toronto, parks designed by someone other than a skateboarder ends up as money wasted. The ramps at Otter Creek and the park at Lawrence/Allen come immediately to mind. Poor pavement, terrible transitions, often too steep.
- Having a skatespot nearby was my childhood dream. Thank you!

Skatespot - Lighting, Safety and Noise

- Make sure there are lights so the skatepark can be used at night
- very worried about the skateboard area and basketball court bringing noise and danger to the park
- The skateboard spot should be built with proper water drainage in mind so that there are no places where water collects after rainfall. The skateboarding spot also needs to include proper lighting for evening skating, garbage cans, and benches to allow for skaters and spectators to rest and watch
- The type of debris left by trees and vegetation should be easily swept away to prevent accidents. There should be a seating area away from skate obstacles. Shaded man-made seating area not dependent on trees.

Park General Feedback

- Open up Mud Creek! Make the dog area smaller so we can toboggan safely
- Other applications for the skate park could be street skiing in the winter.
- Overall it looks good. My main concern is that there be good lighting along paths - in particular if there are going to be new trees that eventually grow tall. And please keep dogs off-leash separated/segregated from those of us who do not have dogs.
- Other than the West Stair Replacement I'm largely unhappy with this plan.
- Overall, I like the plan and welcome the improvements, especially to the path from Eglinton Ave, and the path and stairs to Oriole Pkwy. The skatepark and segregated dog park will be a welcome addition too!
- I'm maddened no end about this 'development approach' to our City's parks. I believe our philosophy concerning our green spaces should be preservation, and stewardship - that's it! Grass, trees, flowers / plantings, dirt, and benches. Our parks are meant to be a counterpoint to the concrete city - NOT offer subdivided activity areas to every kind of specialized interest. Especially obnoxious is carving out the dog area which to me is a form of theft of this land, from the community.
- Would like the existing parking lot to exist.
- Would love to see a cafe or refreshment area
- Yes - please cut down the dead trees in the entrance way area off Eglinton. They look terrible. Please plant some native deciduous trees in their place.
- With the acute shortage of parks in the area, the predominance of zero lot line high density condo development, and the addition of up to 40,000 new people in the area the "plans" retention of the North Toronto Soccer Association's monopoly hold on the park invalidates the entire planning process.
- With the over development in the area individuals and families need a space to breathe and just be outdoors. All the specialty areas are great, but more areas for a family to just 'hang out' are needed. For the same reason, the kid's play area needs to be improved and enlarged.
- Would like fitness equipment installed along the path
- We need another large park to sustain the growth in Yonge/Eglinton. The park currently has tranquil areas and serves the community well. Improvements for pathway and subtle lighting is nice but injecting too many "designed" areas and sports activities will ultimately take away from the natural beauty the area holds.
- There needs to be improvements to build a proper splash pad. Moore Park and June Rowland's have proper ones.
- This page has missing numbers in the legend so it needs to be revised and re-sent so survey participants have the accurate information. pls add what you're doing with the area Metrolinx used and cut down all those trees, the fence that had graffiti for years was finally removed and you put grass sod there but tell us about the number of trees you cut and the number of trees you're planting back in. For the playground area get back the sandbox that you covered up and lied about saying the sand got in the rubber ground/flooring. you know children played in that sandbox all day long with their parents playing with them. you covered it up and had a very small sandbox over by the garbage bins that I asked you to remove as it smelled when kids and parents were playing. The wading pool needs a sign that says 'no dogs in wading pool, if a dog enters the wading pool unfortunately we have to drain, re-fill and add chlorine and it takes over 30 minutes for the children to wait and re-enter' also include the hours of operation in the sign.
- Please mark the path that goes between the parking lot and Eglinton (along the community center) as a shared path. It's part of an official bike route and very busy with cyclists but it looks like a sidewalk, the bike route sign is very small and only on the

south side. Pedestrians always seem to be surprised and sometimes annoyed to see people cycle there. Please make it obvious so they expect us. Overall I look forward to the new park, just please have some picnic tables so we can enjoy summer nights and have a bite to eat and enjoy the weather.

- Just get it done. Shouldn't take this long to improve a park.
- lights for after sunset, proper water drainage for safe and dry surface for skating, benches and garbage cans
- Must properly consider climate change such as looking at the topography and hydrogeology to prepare for areas flooding
- As a user of the park, I have noticed many young children loving the dirt paths, and the natural feel of sitting and running in the grass etc. I hope the park does not become over gentrified and planners keep in mind that this park has been a very safe and welcoming space for children of all ages to enjoy and experience nature I hope this will be kept in mind as there seems to be an interest in paving paths, putting up fences and barriers, etc.
- Don't divide up the park into too many separate sections or it won't be as usable
- Don't like the Liquor allowed in the park
- Don't like the west stair replacement. Don't like the idea of wetland plants. The community garden needs better care and attention.
- Families come there for picnics and socialization, playing frisbee or throwing a ball, flying a kite, a lot of open space is being taken up. It seems to me a lot of money is being spent for a park that most of the area residents have been happy with.
- Great to have the new path . I just don't understand why the 2 barriers close to Roselawn Ave that were installed last near never get closed. There is a lot of bike racing and kids using it as a swing.
- I believe a fully paved path that encircles the whole park would be a tremendous asset for walking and running. If wide enough bikes for kids could be permitted. The west side does not have a path and could accommodate one
- prefer round, circle rails. They are safer and forgiving than square rails.
- I think the park master plan is not ambitious enough given the scale of growth in the neighbourhood. The next focus needs to be on improving the scale and quality access and street edges to the park. Internal pedestrian circulation should make a circuit and be designed for a big city, wide paths, continuous seating, large scale planting areas. This could really give the park a focus rather than a string of pearl's on a thin pedestrian path. As well each element has a lot of design focus. This seems to be at the expense of the larger design ideas for the park itself for pacing, lighting, seating, fences etc. The park needs a strong identity and these elements can help this rather than each piece having its own character. Good luck on this.
- i'm not sure the purpose of the fire pit
- I'm not sure why we need a skate park. How will you ensure off leash dogs will use dog parks vs soccer fields? Will you be improving the trail on the westside of the park which is currently in poor condition? Will senior and lap swim hours be reinstated for outdoor pools?
- Increase the size of the dog park and replace skateboard park with a more flexible use.
- I'd like to see any Indigenous names and words with a pronunciation guide.

Park Improvements Opposition

- I have enjoyed this park for more than 30 years and look forward to the much needed and welcome improvements. It will seem to have more purpose than just a park.
- Leave the park alone and save the millions of dollars
- Less is more!! As well, the easier the obstacles, the wider range of community members who will be able to use it

Sports

- I think that it is a well thought out plan that addresses many of the concerns and comments raised previously. It seems well considered. To the north of the future basketball courts, could consideration be given to outdoor pickleball courts at the top of a portion of the hill?
- Disappointed in lack of focus on Pickleball
- Please put in as many pickleball courts as you can.
- Please add outdoor volleyball courts <3
- Some type of water feature would be great, eg. Splash pad. Also consider incorporating Pickleball courts
- more swimming pools please
- Need pickleball courts!

Washrooms

- What about the washrooms?
- What about washroom access year round?
- What is the plan for washroom facilities?
- Will there be public washrooms?

Nature, Planting and Trees

- Harmony with nature. A place of life giving opportunities to renew and refresh.
- Trees need space and must sleep
- Grateful to have park cared for and more trees but wish you would find an alternate for the concrete
- Lots of old growth trees!!
- It is IMPERATIVE that the City chooses to use native plants for ALL its projects. It not only helps native ecosystems (from insects up to birds and animals). The city should set an example for its residents.
- We seem to take the wooded west hill for granted. Can we protect it, and use that woodland path? And, as for history, we stress the Indigenous, but skip the industrial transformation, as a quarry, and the ROM excavation and the hunt club. Other histories.

Park Safety

- Please consider improving signage on paths regarding bikes. I am referring to serious cyclists, not families practicing learning how to cycle. As a pedestrian with small children I have almost been run over numerous times by professional cyclists keen to move between Eglinton and Roselawn quickly. Consider some signs outlining that pedestrians and strollers have the right of way over cyclists and that motorists scooters should not be on the path.
- I think you folks have done a good job keeping the cyclists away from the toddlers, at least from the way I understand this plan. I am concerned about wild cyclists like there are in High Park. There needs to be clear lines about who has the right of way. Speeding cyclists or other park users.

- I don't think the placement of the skate spot and the basketball court will be safe due to Eglinton being so close for two reasons. 1. Kids being unsupervised near such a fast moving/major road and 2. Misuse of the area due to its visibility and proximity to the street

Tobogganing Hill

- What has happened to the informal toboggan slope area
- What is happening to the sledding hill? Where will kids play on sledges in the snow?
- Yes! I truly believe thought must be given to creating at least 1 or 2 winter sliding areas on the hills of Eglinton Park. The children need that. I've lived on Edith Drive for well over 40 years of my 74 years on this Earth and have observed the wonder of winter play for children become secondary or (it seems at this point) eliminated from the thoughts of adults trying to create something new. This is a community park. Children are the future of the community. Let's pay attention to their needs for community and make it a priority far ahead of sticking fire pits in public spaces

Shade and Seating

- Please add more benches all throughout the park including around the edges of the sports field. There is nowhere to sit
- Consider that this is the only outdoor space for a large number of seniors to come and sit. The plan feels like it excludes the needs of this population
- Could there be some shaded areas around the skatepark? Not just trees maybe some gazebos or something simple
- Hoping that the proposed plans result in a net gain of trees as this is a great feature of the park. More benches especially in shady spots is so important. I love the dedication plaques on trees/benches, hope these remain
- We need more shade in the park next to benches. Benches should have straight backs not open or too slanted and seating not too deep . The dog park should be located away from the centre closer to the new stair area where the existing baseball diamond is - which I believe is being removed? A paved path all around-the park would be great so we can walk the full circumference comfortably and not interfere with sports etc.
- I like the benches. Should be more areas to sit. Also in the skatepark I like the features of option 2, but with the option 1 end 2' quarter pipe with a deck

Maintenance, Timing and Budget

- Maintain the park for winter use
- Maintenance is critical. Children's playground "flooring" is already a tripping hazard
- Maintenance of the eastern boundary path for bikes, pedestrians and strollers should remain as directly between Roselawn and Eglinton. This pathway is a very important through way up Lascelles from Chaplain Crescent in to Lytton Park
- This is going to go over budget and over time, effectively closing the park for years. What a disaster in the making. All you need are some better lights and fix the wooden stairs where the boards are soft, and clear the trees out of the way for better sightlines. This should be a few thousand dollars and can be done in a weekend! Stop ruining the city
- Ensure ample waste and recycling receptacles
- How long will it take? Keep residents informed of progress? Timing?

DOLA (Dog Off-Leash Area)

- Increase dog area
- Dog park should have higher fences and be larger without agility equipment
- Please work on the off leash dog park first because we sorely need one in the area, that's got separation between large and small dogs. Otherwise, design looks great, thank you
- No dog park
- DOLA location is a mistake and an invitation to disaster.
- DOLA should be further from the child-adult path, seeing many dog owners letting pets run in front of bikes and joggers with possible injury saying it is okay their dog is Friendly!
- Please at least double the size of the dog park and get rid of the skate park. Dogs can be found using this park at any hour of the day. There are no skateboarders who use the park ever.
- Feces deposited on the paths, grass, and other elements of this park is already a problem. This new plan introduces features, like the central dog park, that risk introducing far more fecal contamination than is already happening. The large dog park in the middle should be replaced with smaller ones near Eglinton and Roselawn, to discourage dogs from being brought through the rest of the park. The dog park is too close to sacred elements. More should be done to solve the feces problems that are already happening, instead of introducing more opportunities and places for feces to be deposited.
- Larger area for dogs off leash, please.
- Move off leash area somewhere else
- My dog cannot go into the off leash area, she needs the water fountain to be accessible
- Why is the dog off-leash so small?
- Please don't add mulch to the dog park. Also, try to find a way for water to not be shut down for winter (inconvenience for dogs)

Additional Comments

- No.
- No.
- No.
- None.
- None that I can think of right now.
- Nope thanks, hope it happens.
- Thank you.
- Thank you for gathering feedback from the community!
- Thank you for your hard work on this project!
- Thanks for this process.
- This is great work. Excited. Just hope it gets done and that basketball isn't left for years.
- Really excited for this.
- Hope it's ready to skate as soon as possible!! Thank you so much 🍷
- I hope there is funding to complete the excellent design.
- Good to see improvements being planned!
- I am very excited about the elements shown in the survey. It's been a very long time coming and will be a wonderful transformation while keeping so many essential and popular elements. Congratulations to everyone who gave input at different stages and worked on the design! Can't wait!!
- It is impressive

Engagement and Survey Feedback

- Keep up the good work consulting but do more in person.
- I'm not quite sure why this drawing is so different from the others - the skate spot is totally different, the proposed trees are located differently. To be honest, the walk-through has been the best contributor to my understanding of the proposed changes. I wish ongoing walk-throughs had been part of the process, with stakes showing delineation of proposed changes. People (me included) just don't understand how the proposed changes will impact their use of the park until they walk it. The walk-through also brought to light some missing knowledge on the City's part, memorial and other trees missing from the survey.
- I appreciate the opportunity to participate in this process.

City Response

Below, City of Toronto staff have provided responses and additional information to repeated comments and questions received from the public survey. There were several additional comments on elements proposed in future phases of the park's improvements. Comments received regarding these elements will be reviewed in future consultation and considered in other phases of work.

Dog Off Leash Area

The location of the Dog Off Leash Area (OLA) is based on the Master Plan which included public consultation and City staff review. The location of the OLA is a flat open space which is easy to maintain and centrally located for easy access. The proposed location is also adequately distanced from the playground and does not impede on the existing recreational fields. The proposed OLA is medium size which is an ideal size for an urban park and the observed existing dog users in the park.

The existing dog fountain in the park is being relocated outside of the south gate of the proposed OLA.

Tobogganing

Tobogganing is not permitted in the park. The permitted programming of the hill, such as picnics, sitting, sunbathing and other passive recreation will not be impacted by the proposed OLA.

Fire Pit

The proposed fire pit was determined through consultation during the Master Plan project. The fire pit can be reconsidered in a future implementation phase, which will involve consultation with stakeholders.

Field House

The Master Plan outlines landscape improvements only. Building improvements are not part of the project.

Fitness Equipment

The park improvements need to balance the well used existing programming and future needs of the community. This balance can be achieved through dual purpose courts, such as tennis and pickleball. Fitness equipment will be considered in future park improvements as per the Master Plan.

Layout and Location of Park Elements

The park improvements need to balance the well used existing programming and future needs of the community. Many of the layout and locations of park features and amenities were decided in the Master Planning process and informed by public engagement and consultation.

Pickleball

The park improvements need to balance the well used existing programming and future needs of the community. This balance can be achieved through dual purpose courts, such as tennis and pickleball.

Seating

There will be accessible seating throughout the park, including seating designs that have backrests to accommodate many park users, including seniors.

Skatespot

The location, size and number of features to be included in the skatespot was determined based on available budget, feasibility and engagement with both local residents as well as members of the Toronto-wide skateboarding community.

Paving and Pathways

The park improvements include a new walkway that has a decorative pattern that references the historic Mud Creek. The new walkway generally replaces the existing north/south path with the addition of a new walkway connecting to the west stairs. The width of the walkway complies with accessibility and maintenance requirements. This will improve the park's connectivity and accessibility.

Stairs

The new metal stairs will be durable and anti-slip as it is a steel metal grating. The opening grating is free draining and prevents standing water. The new stairs connection from Orchard View Blvd into the park generally follows the existing stair footprint with the lower stair segment in a more southern location on the slope. This approach had the least impact on the hill and existing tree canopy.

Indigenous Placekeeping

In alignment with the Reconciliation Action Plan (RAP), the City of Toronto's Parks, Forestry, and Recreation (PFR) Division plays an important role in advancing reconciliation in the City. PFR aims to create physical spaces, processes, and policies to support ceremony, teaching, and community, while also honouring Indigenous connections with lands and water.

Indigenous placekeeping recognizes Indigenous knowledge, history, and culture, serving as an essential act of reconciliation. Eglinton Park, located on the traditional territories of many First Nations, was historically a Wendat village with maize fields along the now-buried Mud Creek. Understanding Eglinton Park's history and PFR's RAP commitments, the park improvements include Indigenous placekeeping elements in the design proposals.