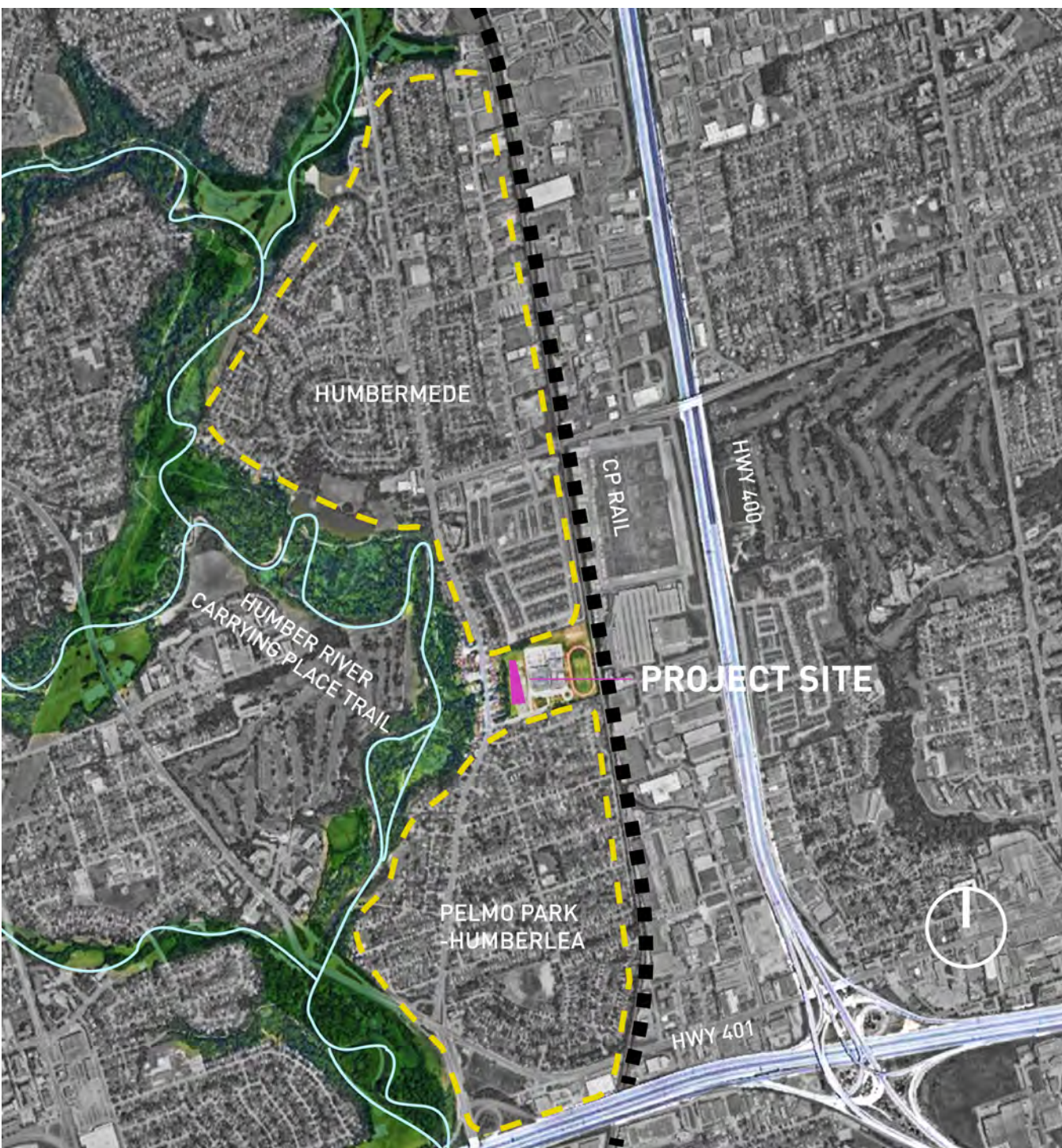


Welcome to our final open house!

The City of Toronto, Parks, Forestry & Recreation and Children's Services Divisions invite you to explore the design of the new Western North York Community Recreation and Child Care Centre.

We want to thank those who have been closely tracking the progress of this project and those who have provided their feedback to date. We are excited to show you how the community's feedback has influenced the design of the new community centre!



Project Site

The site at 60 Starview Lane was purchased in 2015 by the City of Toronto, and is East of Weston Road, located next to the Toronto Catholic District School Board's St. Basil-the-Great College School.

Project Goals

1. Connected Neighbourhood and People

This project is designed to create a civic hub where people come together to socialize, learn, work and play. It will create strong connections between neighbourhoods and the Humber River parkway system, delivering a walkable, vibrant and active community space.

2. Sustainable, Resilient and Healthy Facility

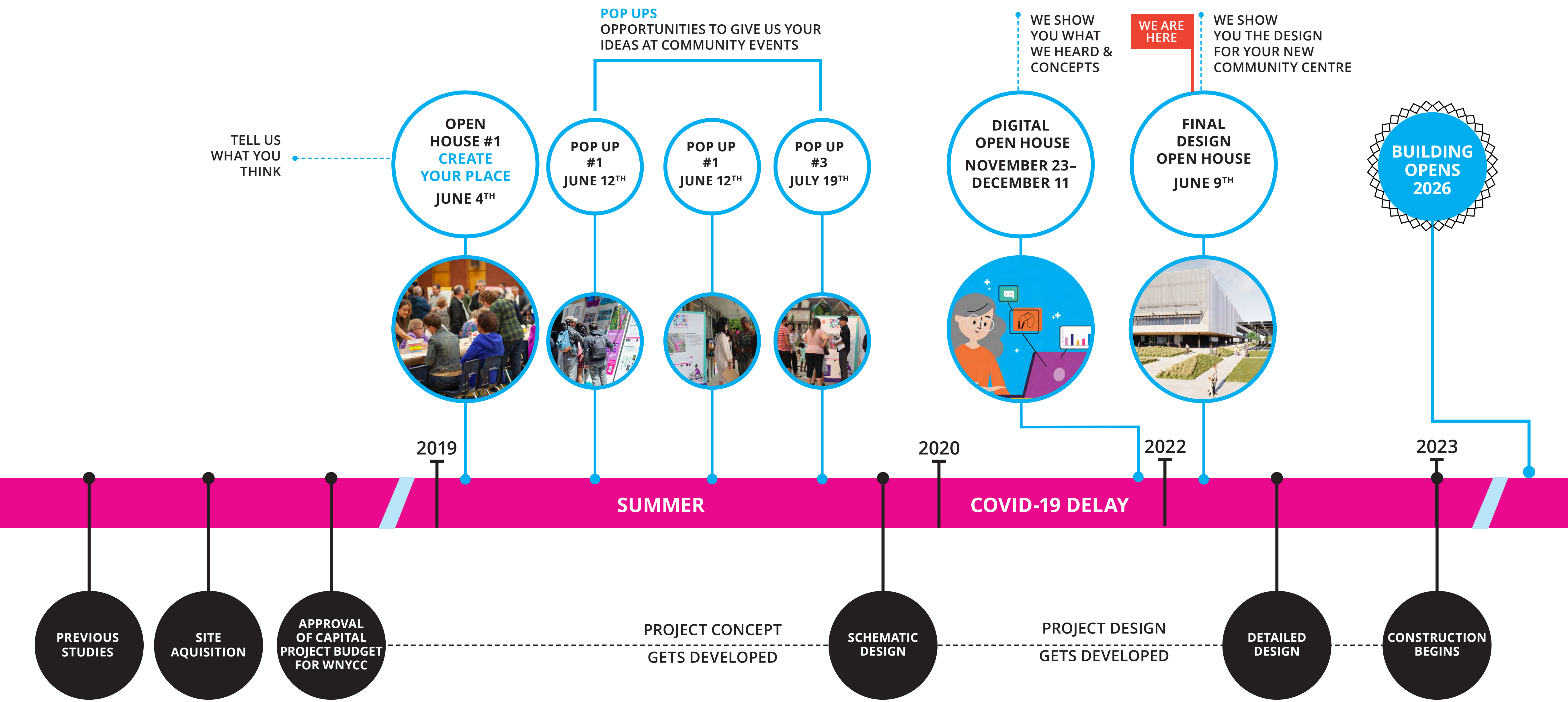
This project will prioritize sustainable design to create high quality indoor and outdoor spaces that minimize energy usage and provide direct connections to outdoor park spaces.

The new community centre will demonstrate the City's goal of developing buildings that promote wellness and protect the environment.

3. Inclusive Design

The new community and child care centre will create a warm and welcoming environment that is inclusive of all age groups, gender identities, cultural backgrounds and abilities. It will deliver durable, flexible and adaptable spaces to maximize its potential for programming and social enrichment. It will express a new and unique identity that is respectful of the existing character of the neighbourhood.

Timeline



Overview of Past Events



OPEN HOUSE #1: Carmine Stefano Community Centre
June 4th, 2019
Participation: 108



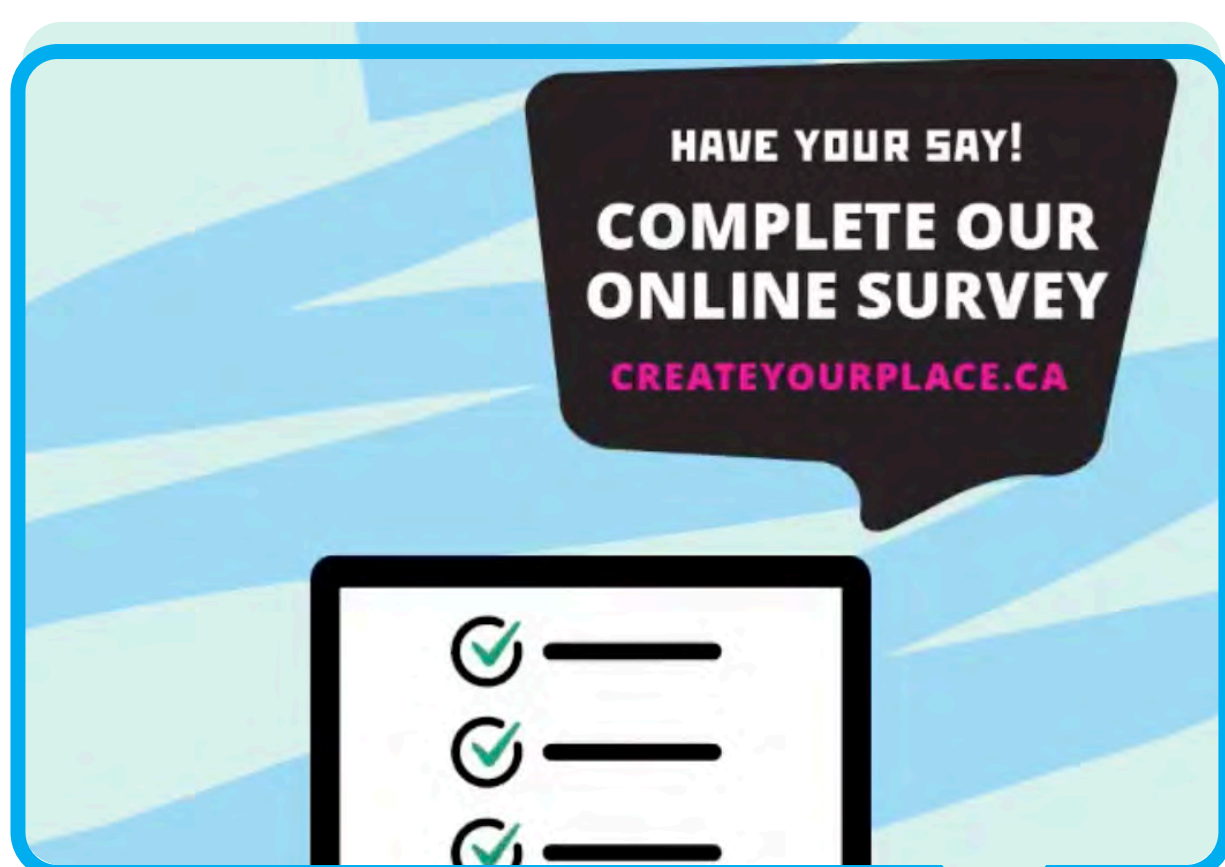
POP-UP #1: St. Basil-the-Great College School
June 12th, 2019
Participation: 350



POP-UP #2: Humbermede Community Fun Fair
July 13th, 2019
Participation: 50



POP-UP #3: Movie in the Park
July 19th, 2019
Participation: 350



SURVEY
May 28th through August 1st, 2019
Participation: 203
(Completed Surveys)



DIGITAL OPEN HOUSE
November 23rd through December 18th, 2020
Participation: 359

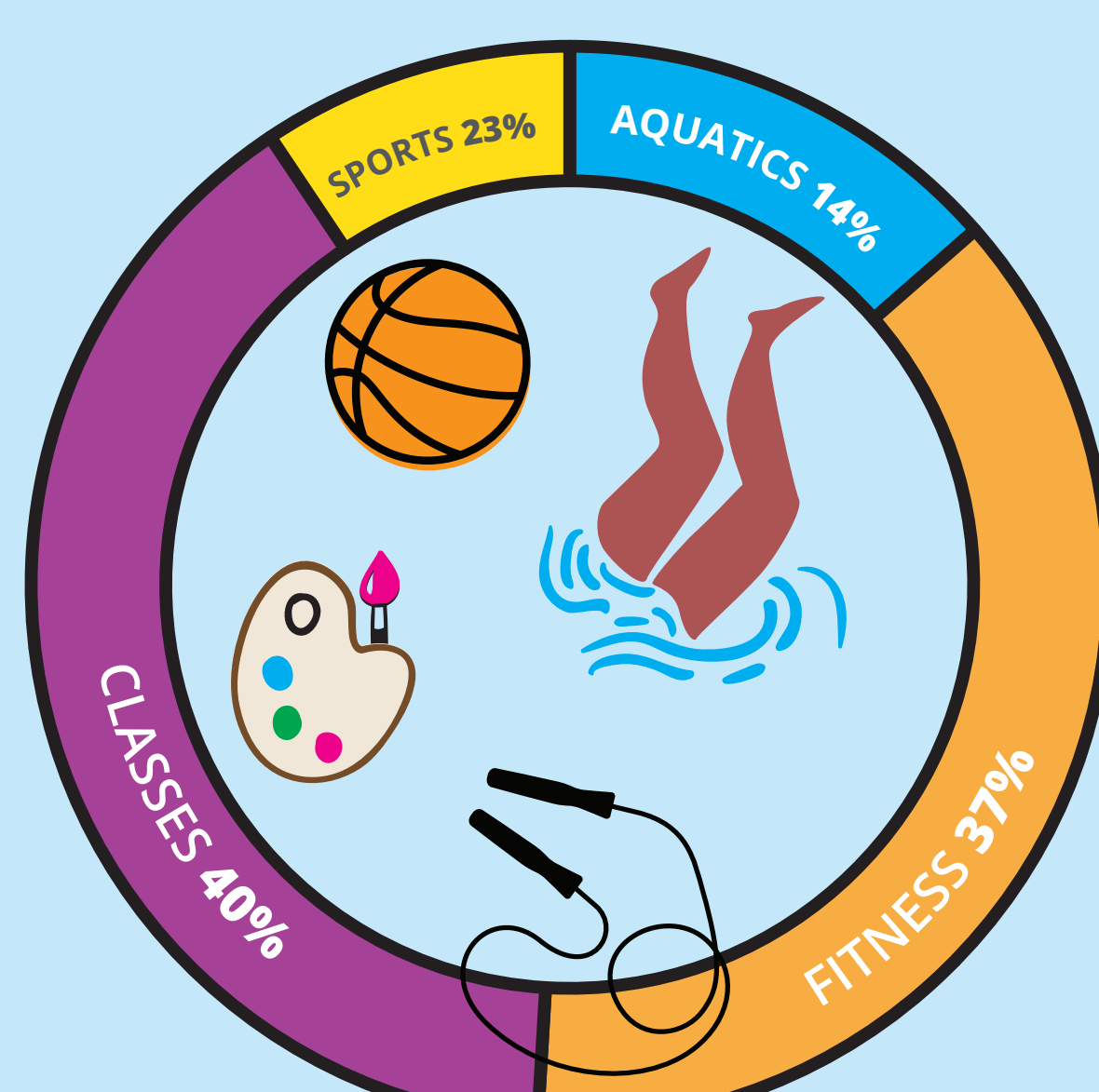
Community Feedback

'Top 5' reasons why people might visit a new community centre in Western North York.



Program Interests

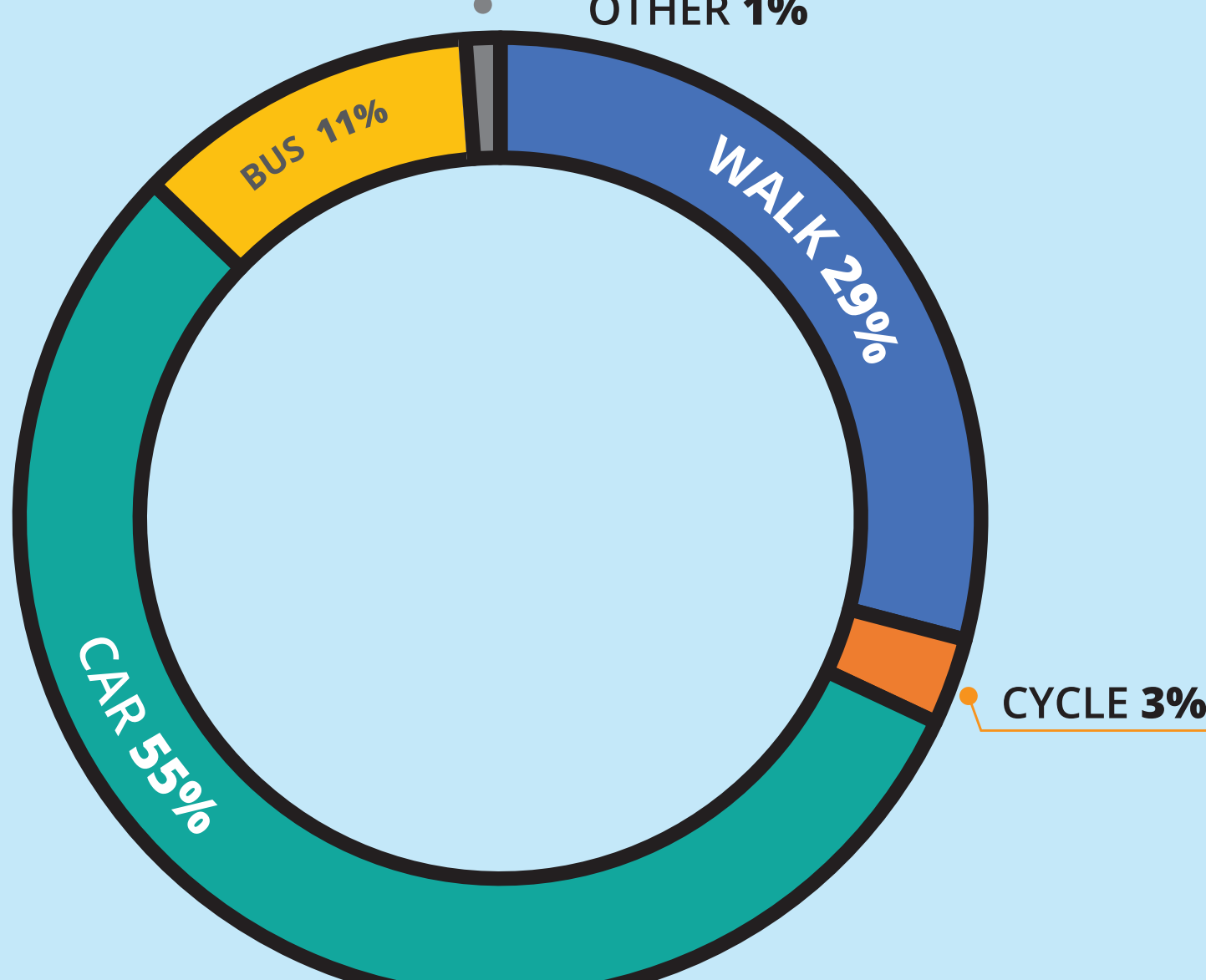
Types of recreation programs community members want in the new centre.



Diverse Community

This is a diverse community. Currently, the community lacks a place where everyone can come together. An inclusive facility will create opportunities for different groups to meet and interact.

Modes of Transportation to travel to the new community centre.



Transportation Preference

Recreation + Social Spaces

This centre needs to be more than recreational programming. It needs to be versatile and multi-functional. It needs to be a place for the community to gather.

Driving Is Easiest

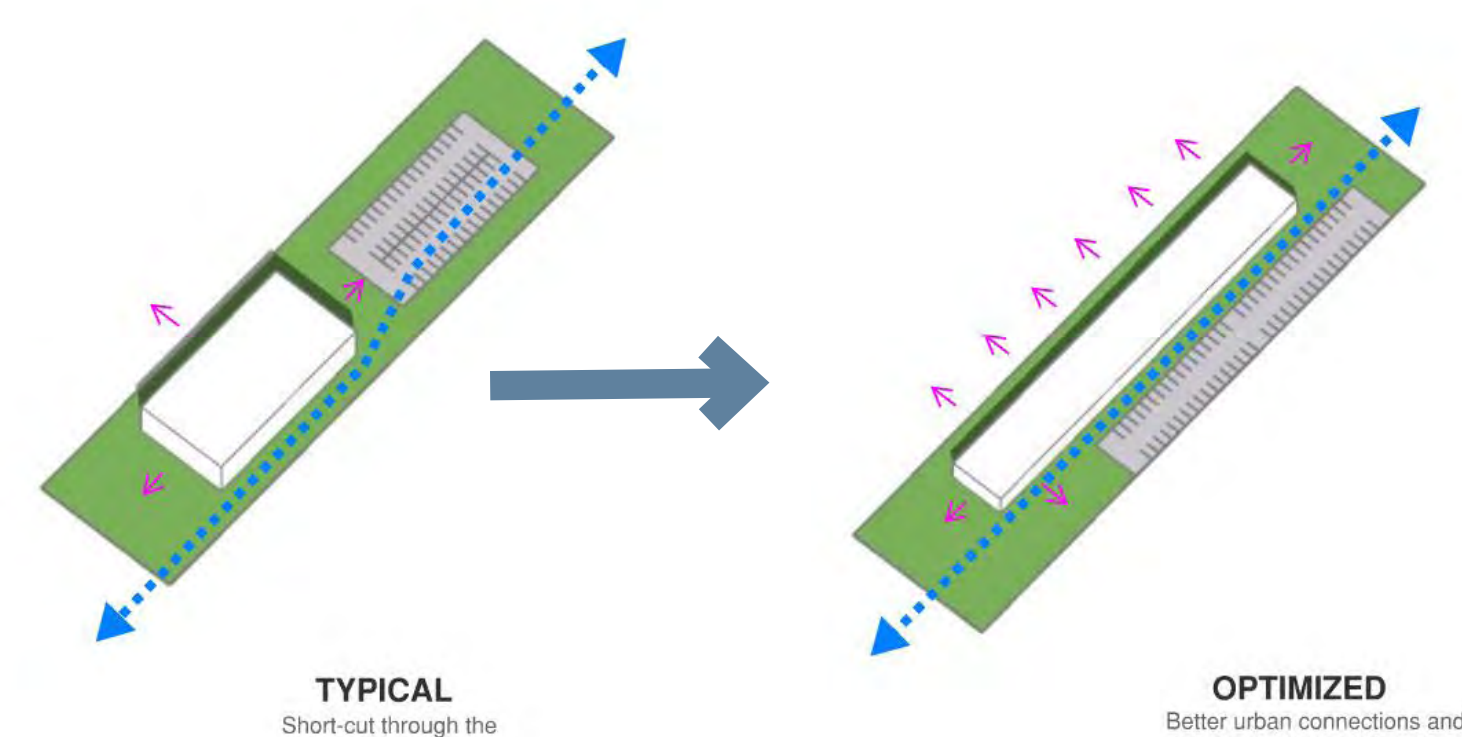
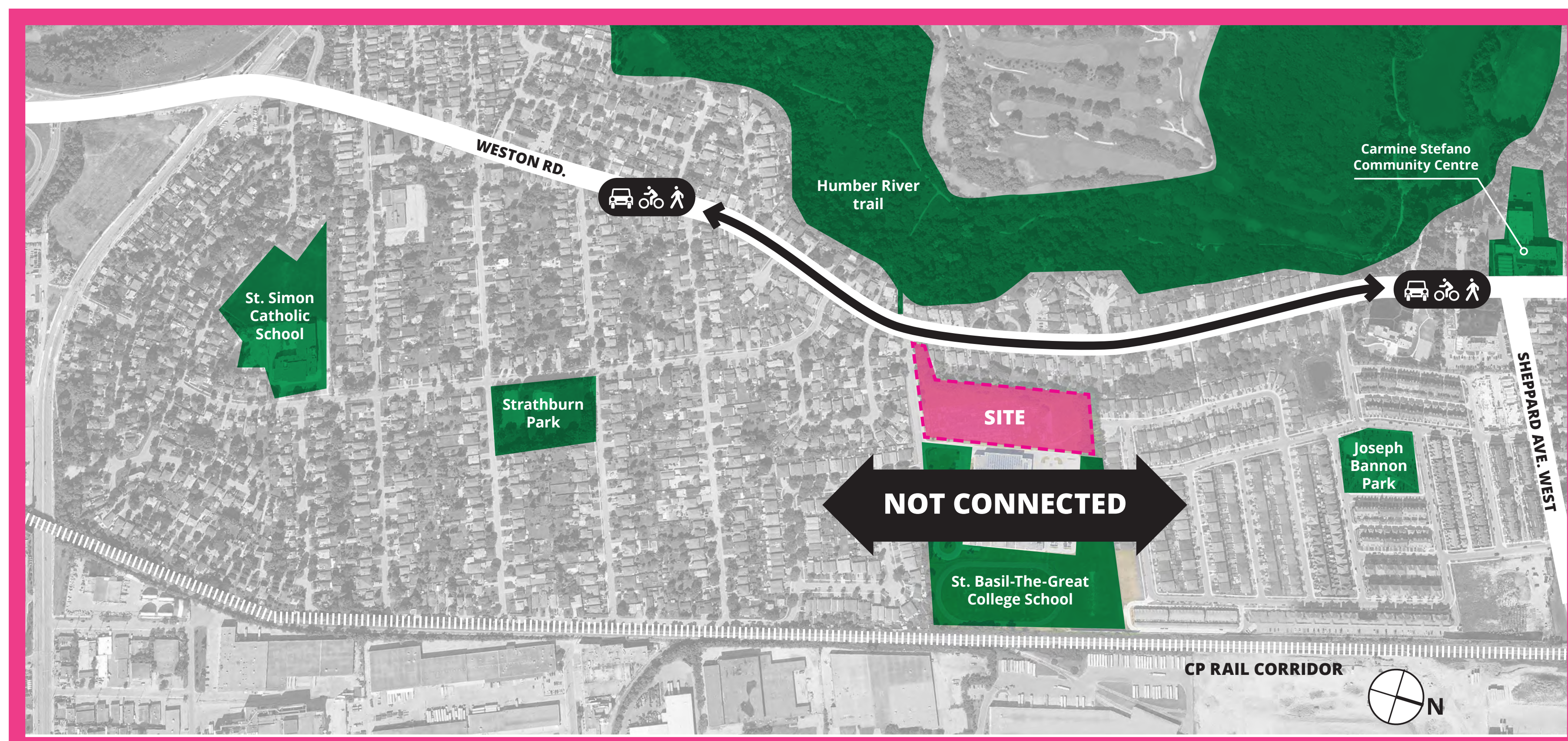
Most of the people we met lived within a 30 minute walk of the new site. Yet, 55% anticipated that they would drive to the facility. Creating better connections for travelling will encourage people to use alternative, and more active ways to move through the neighbourhood.

COMMUNITY CONNECTOR

From Dead-Ends to Destinations



Neighbourhood Access

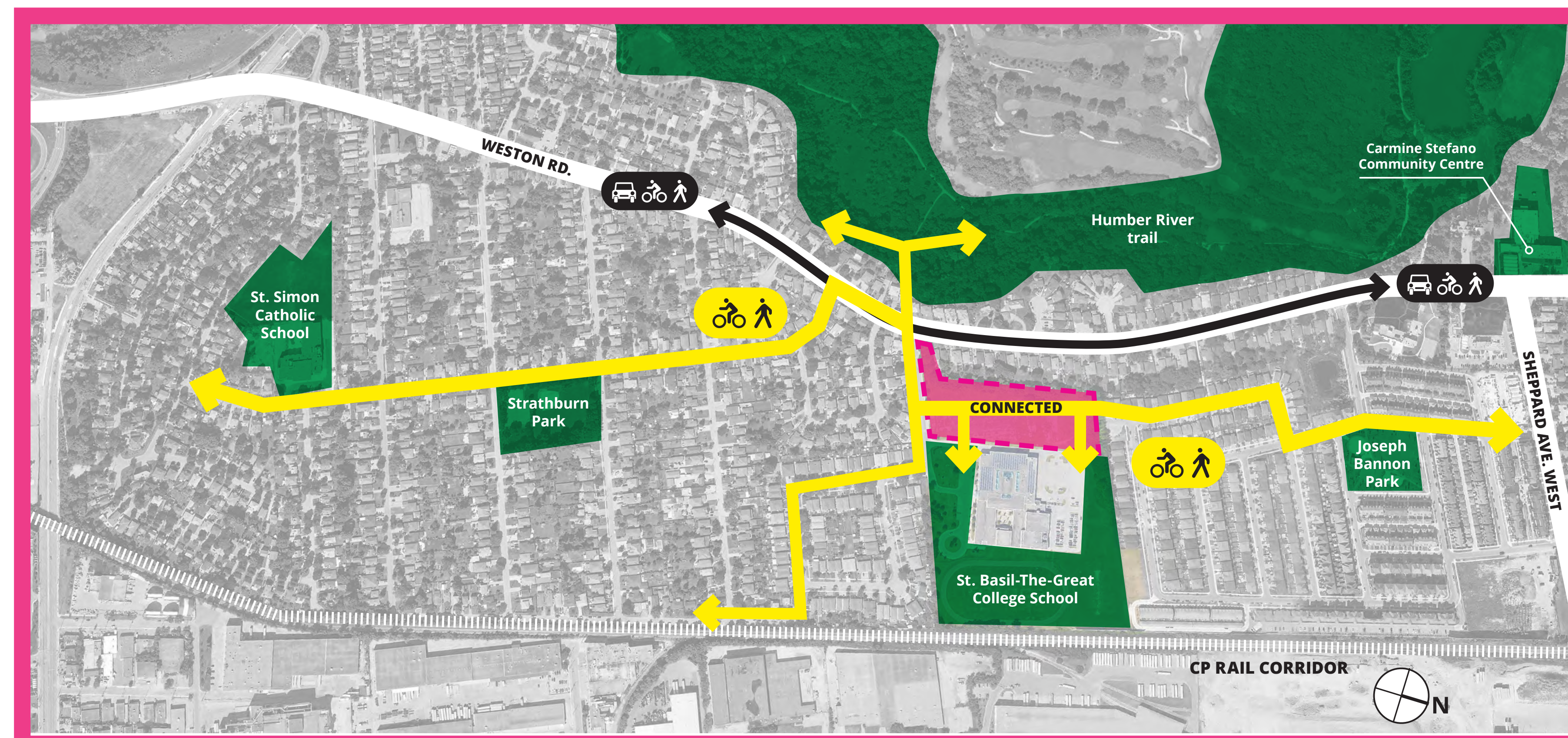


Currently, there are limited connections between the communities to the North and South.

The new community centre will establish these connections, safely linking neighbourhoods and residents with one another.

Walking, cycling, skateboarding, running, scootering, and strolling between the two halves of the neighbourhood, will now happen safely, without the need to cross busy roads or parking areas.

Site as Connector

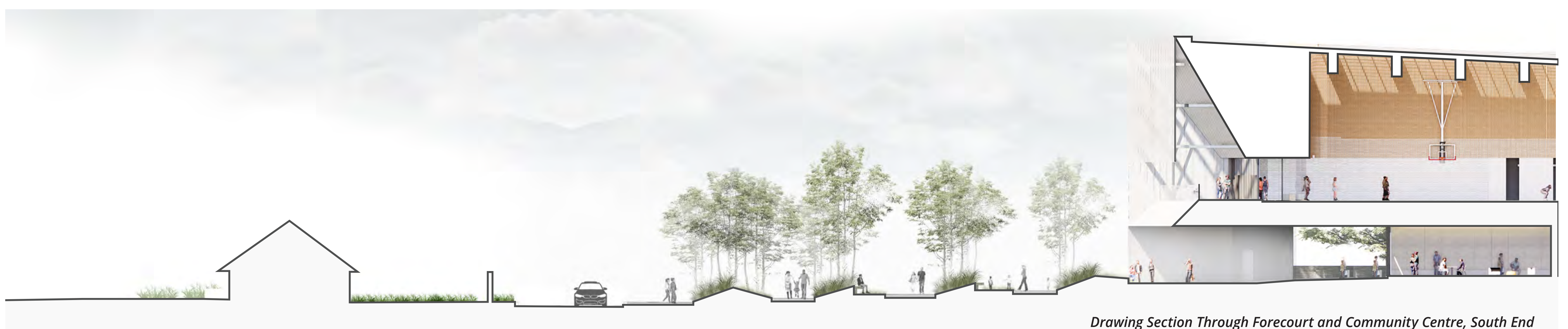
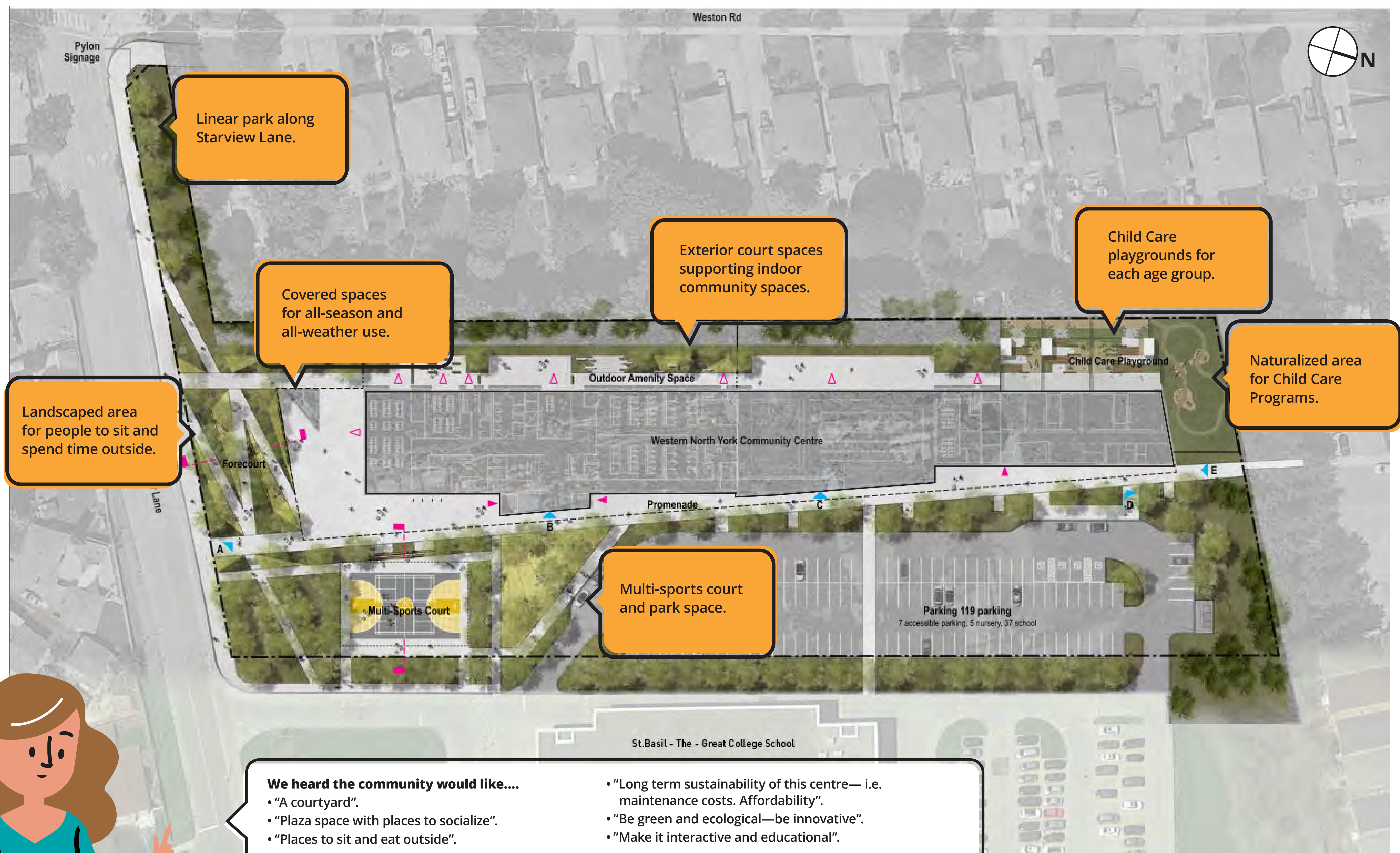




We heard the community would like....

- "Access enhancements, bike paths, better walking options..."
- "Direct access for Issac Devins neighbourhood to the north".
- "Keep path connections for pedestrians".
- "Make multiple access points for bikes and reduce the use and reliance on cars".
- "Connections between surrounding residential neighbourhoods".







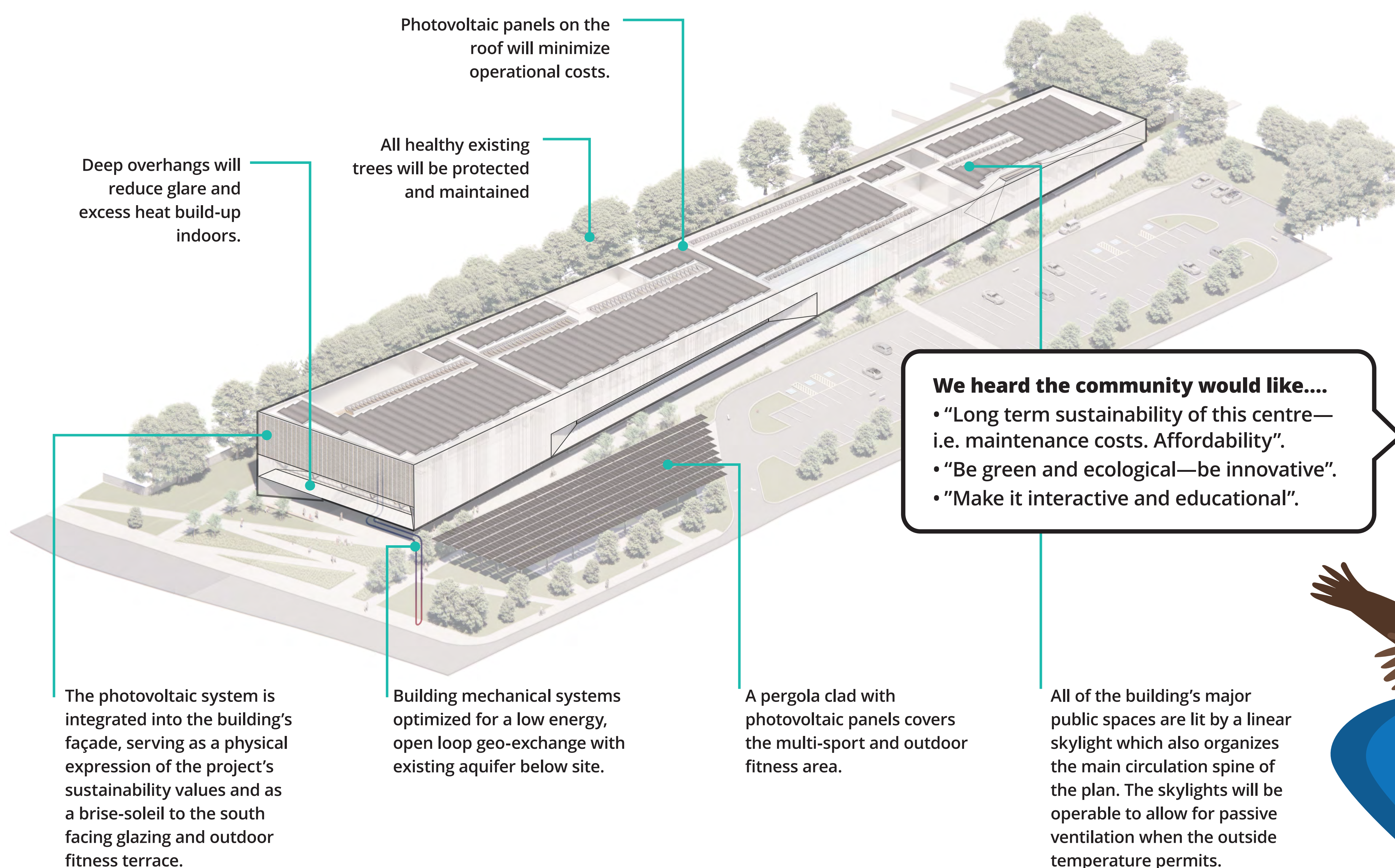
Community centers are by nature large consumers of energy and water. Despite this, the City required the project to serve as proof that the latest Toronto Green Standards are achievable. The goals of zero greenhouse gas emissions and net zero energy status on a site with limited space for photovoltaic panels meant that almost every measure would have to be investigated to lower TEDI and GHGI enough to minimize the scale of on-site energy generation.

Highlights of the integrated strategies are:

- A high-performance building envelope with a maximum air-leakage rate that is 50% below the National Energy Code
- User controlled operable glazing to provide natural ventilation
- Regenerative media filters, waste water heat recovery, and automatic pool covers to minimize aquatic hall loads
- Interior environments that prioritize occupant comfort over air temperature

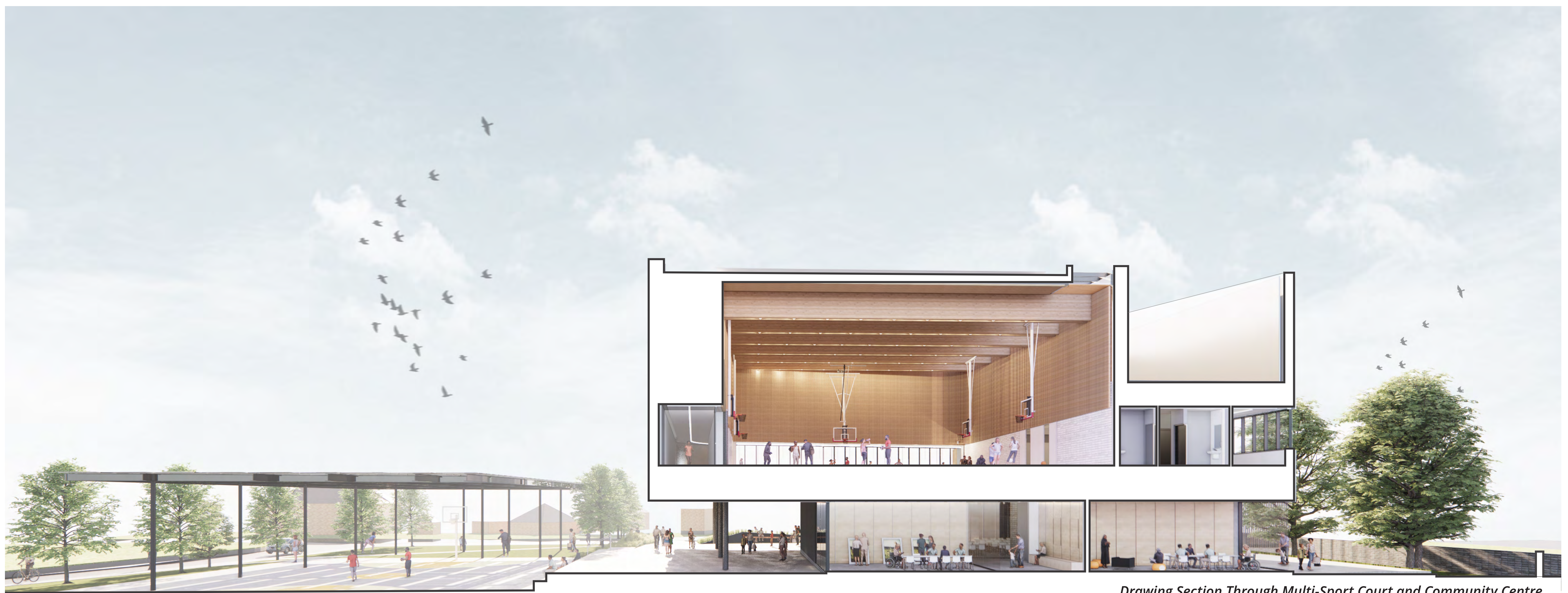
- Exterior shading devices for glare and heat gain control
- Mechanical systems optimized for a low energy, open loop geo-exchange
- A site and building integrated photovoltaic system to achieve net zero energy use

Early site investigations revealed that a buried river valley and aquifer run under the site with heat exchange capacity to handle the building's peak heating and cooling loads, lessening EUI by 47%. This reduced the scale of the photovoltaic system required to achieve site sourced, net zero energy, allowing the seamless and strategic integration of the PV panels into the façade's brise-soleil system and the park's sports court shade structure.

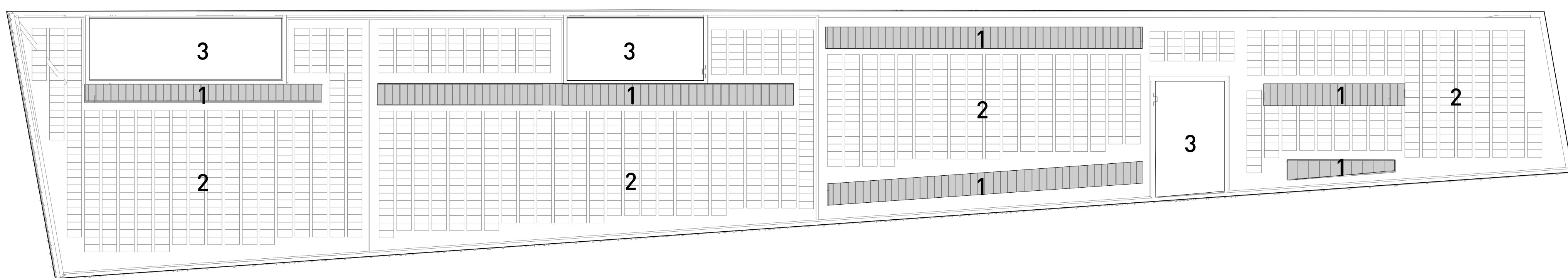


We heard the community would like....

- "Long term sustainability of this centre—i.e. maintenance costs. Affordability".
- "Be green and ecological—be innovative".
- "Make it interactive and educational".

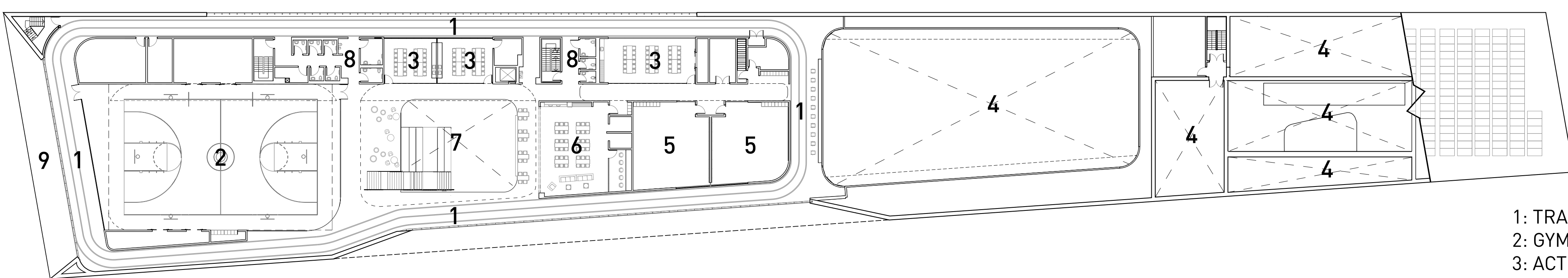


Drawing Section Through Multi-Sport Court and Community Centre



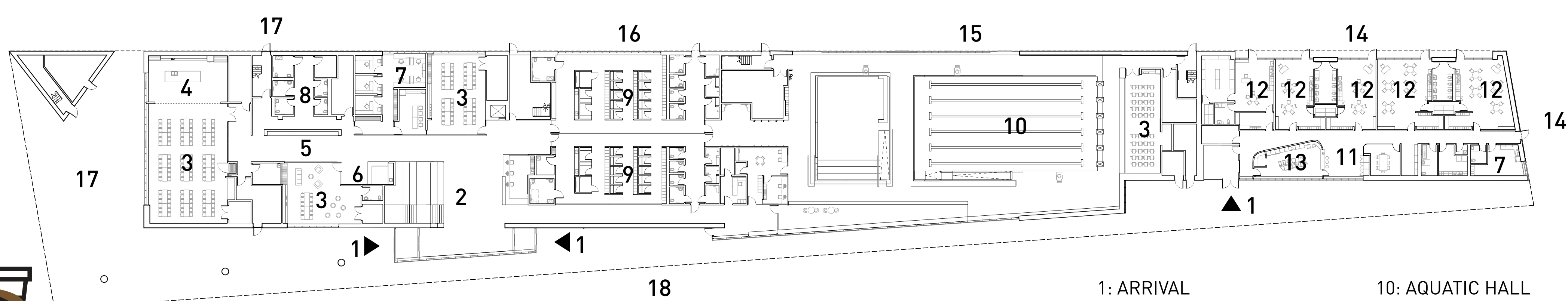
ROOF PLAN

- 1: SKYLIGHT
2: ROOFTOP PV SYSTEM
3: MECHANICAL WELL



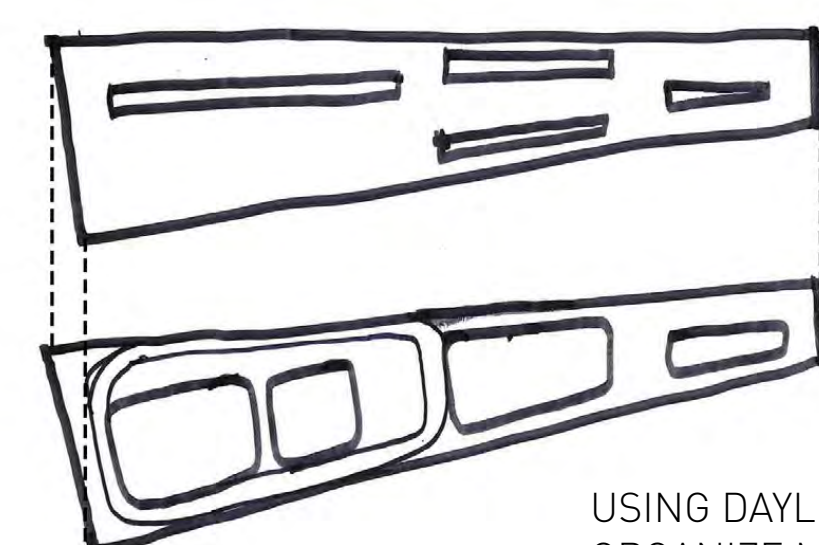
SECOND LEVEL PLAN

- 1: TRACK
2: GYMNASIUM
3: ACTIVITY ROOM
4: OPEN TO BELOW
5: STUDIO
6: MULTI-MEDIA STUDIO
7: LIVING ROOM
8: ALL GENDER W/C
9: FITNESS TERRACE



GROUND LEVEL PLAN

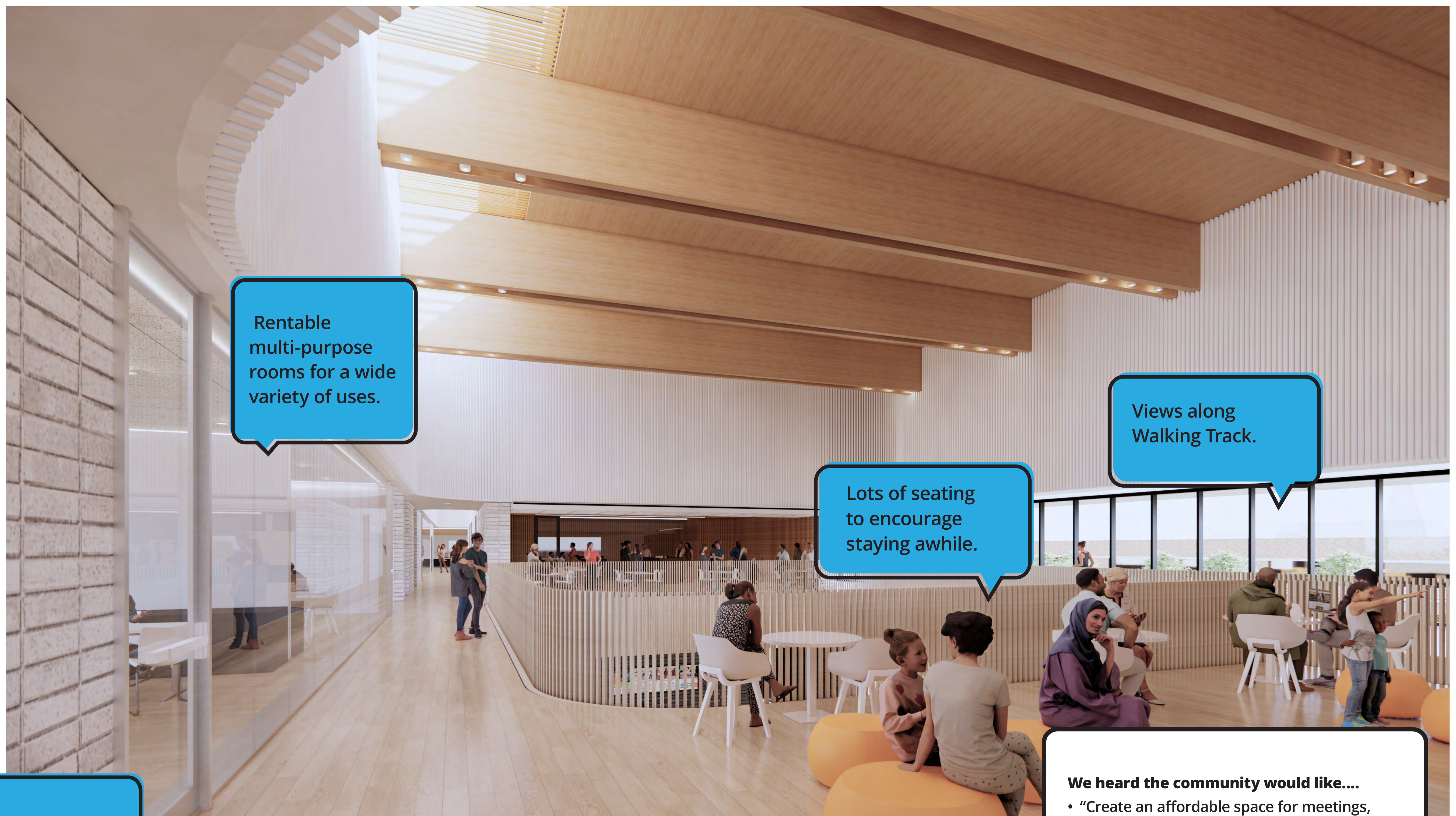
- 1: ARRIVAL
2: LIVING ROOM
3: ACTIVITY ROOM
4: COMMUNITY KITCHEN
5: COMMUNITY GALLERY
6: COMMUNITY-RUN SERVERY
7: ADMINISTRATION
8: ALL GENDER W/C
9: UNIVERSAL CHANGEROOM
10: AQUATIC HALL
11: GROSS MOTOR SKILLS AREA
12: CHILDCARE PLAYROOM
13: OPEN KITCHEN
14: CHILDCARE PLAYGROUND
15: AQUATIC PATIO
16: GARDEN
17: ACTIVITY PATIO
18: COMMUNITY PROMENADE



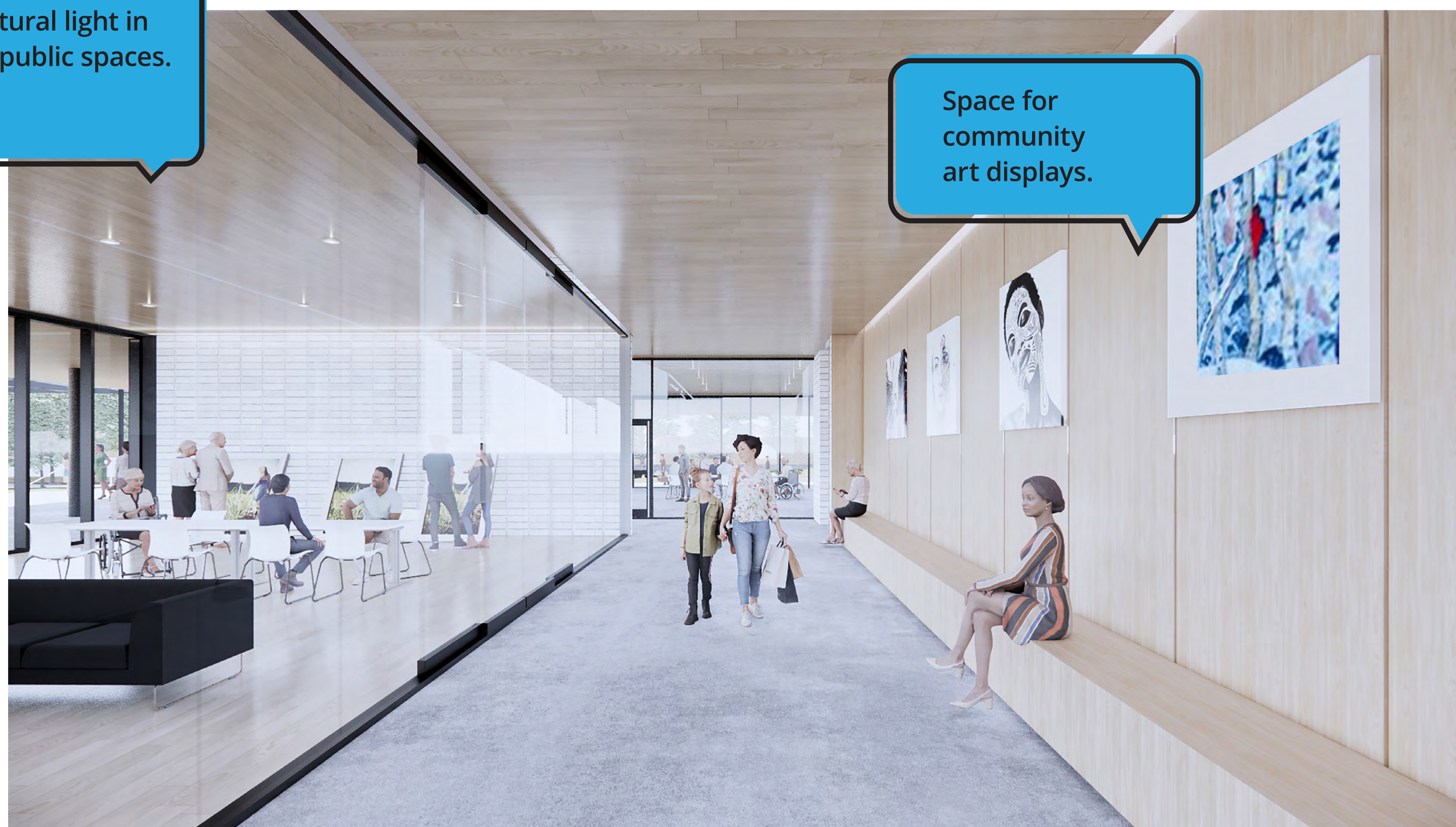
USING DAYLIGHT TO
ORGANIZE MAJOR SPACES

COMMUNITY LIVING

More places to spend time together



Natural light in all public spaces.



We heard the community would like....

- "Create an affordable space for meetings, events and fun recreational activities. We want a fun, creative space with lots of room for all activities".
- "Large rooms with tables and chairs, kitchenette, accessible washrooms and elevators".
- "Clean, natural environment".
- "Warm, not cold, atmosphere and naturalistic".
- "More natural light".
- "Connect with the neighbourhood".
- "Exhibition space/room for art and to display our paintings".
- "To make an inclusive community centre, not just for athletes, art and dance and learning to cook are all important".
- "To create a positive community relationship and accommodate the community's needs as time passes".
- "A space for people to learn and engage with the community, learn new life skills".
- "Youth spaces so they can be part of the community".
- "Healthy food options for students".
- "Community Kitchen".
- "Shared cooking program for seniors".

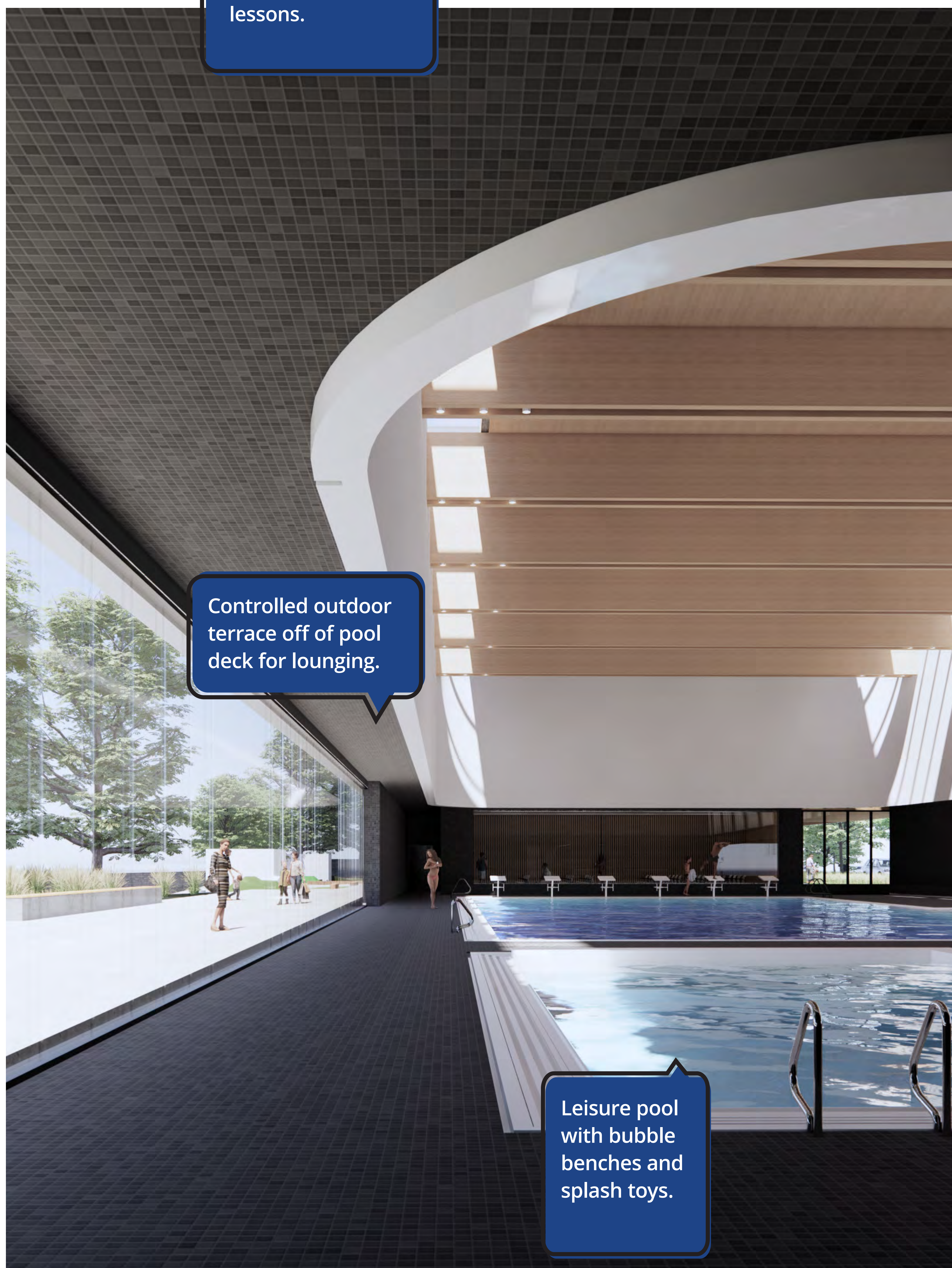




We heard the community would like....

- "An indoor walking track and fitness facilities are popular and well-used by all".
- "Quality indoor walking track".
- "Use of glass for multipurpose rooms to engage more people".
- "Open to all ages and welcoming".
- "A big gym, daily programs and nice fitness equipment".
- "The most important quality to plan for is for everyone in the community to be able to come together and have a good time!".
- "Spacious, options for various programs".





We heard the community would like....

- "Most important is to offer a lot of sports, games and chances to participate in activities and engaging with my friends".
- "Games room for families and youth".
- "Meeting room for community associations".
- "Dance class, yoga classes, music and more programs".
- "An eco-pool with natural light".
- "Different pool areas and zones for kids, youth, adults and seniors".
- "Programs that are inclusive of all ages from toddlers to seniors".
- "Youth spaces so they can be part of the community."
- "Lift/ramp for accessibility".
- "Inclusive spaces with universal changerooms—would benefit me and make people feel safe".
- "Improved showers and changerooms".
- "Aquatic fitness, especially for seniors".
- "Spray features and family amenities".
- "To make the centre a safe environment for people to be a part of".
- "Swimming lessons: adult and childcare—before and after care programs".



View of Toddler Playground



View of Gross Motor Skills and Open Kitchen Area

