

Construction Update: October 17, 2024

Gardiner Expressway Strategic Rehabilitation: Dufferin Street to Strachan Avenue | Community Update

Thank you for subscribing to the Gardiner Expressway Rehabilitation, Section 2 Dufferin Street to Strachan Avenue, community update e-newsletter.

Project Overview:

The project will take place in three phases, focusing on two lanes at a time while keeping four lanes open.

- Phase 1 south two lanes (current stage)
- Phase 2 middle two lanes
- Phase 3 north two lanes

Key elements of the construction project include:

- Preparation work (completed).
- Installing temporary support systems to allow for the construction work to safely take place while keeping two-thirds of the Expressway open.
- Demolishing and reconstructing the elevated roadway.
- Removing and replacing the bridge deck and the large beams (girders) that support the road.
- Rehabilitating the concrete support columns (bents).
- Finishing works.

Rehabilitation Progress Update: Here's what has been happening and what you can expect coming up.

Roadway: Demolishing and reconstructing the elevated roadway.

Completed:

- Phase 1 removal of the roadway has been fully completed.
- Phase 1 bridge deck concrete placement from Bents 27 to 35 (approx. 285m to approx. 450m east of Exhibition Go Station), has been completed.
- Phase 1 southwest retaining wall and barrier wall removals have been completed.
- Phase 1, bridge deck south barrier wall concrete placement completed from Bent 10 to 21 (approx. 35m west to approx. 175m east of Exhibition Go Station).
- Phase 1, bridge deck concrete placement from Bent 31 to Bent 35 (approx. 365m to 450m East of Go Station) was completed on the evening of Wednesday, October 9th, 2024.

What happened this week:

- Phase 1 waterproofing surface preparations started on Tuesday, October 15th, 2024.

- Phase 1 barrier wall reinforcement, formwork installation and concrete placement is ongoing from Bent 21 to Bent 35 (approx. 155m to approx. 285m east of Exhibition Go Station).
- Phase 1 expansion joint formwork construction is scheduled to commence this week.
- Phase 1 bridge deck lighting duct installations will be ongoing this week, starting at west end and progressing eastwards.
- Phase 1 West Approach slab concrete placement is scheduled to commence this week

Location of work:

- Work is being done behind the green construction screen on the roadway and underneath the roadway.

Girders: Removing and replacing the large beams (girders) that support the road. This process includes the prefabrication of the new girders.

Completed:

- Removal of girders in Phase 1 has been fully completed.
- Installation of girders in Phase 1 has been fully completed.
- Completed prefabrication of 324 precast girders produced till date.

What's happened this week:

- Temporary lightning mounted on the new girders in Phase 1.

Location of work:

- Work is being done behind the green construction screen on the roadway and underneath the roadway.
- Girders are being fabricated in a facility north of Toronto.

Bents: Rehabilitating the concrete support columns (bents)

Completed:

- Finished removing the concrete from the bent caps between Bents 1 and 35 (approx. 205m west of Exhibition GO station to approx. 345m east of Exhibition GO station).
- Completed reconstruction of all bents in Stage 1. No further bent cap concrete placement in stage 1.

Location of work:

- Work is being done behind the green construction screen on the roadway and underneath the roadway.

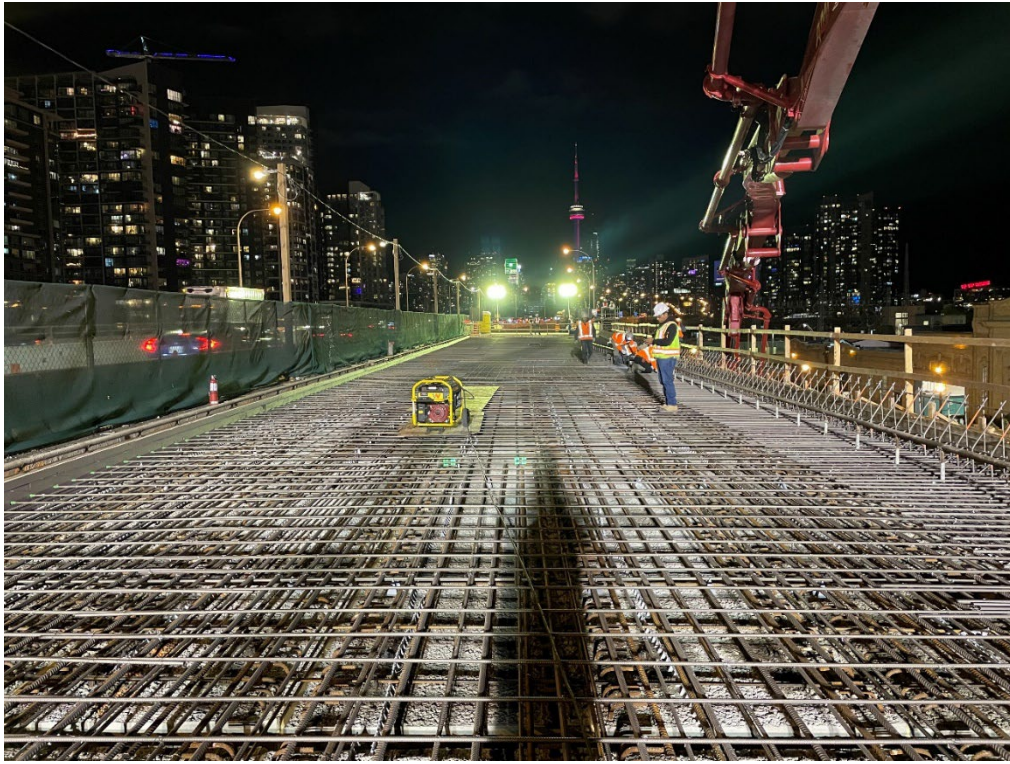
Visual Work on Site: The images below describe the type of work occurring on site during the week of October 14th, 2024.



Concrete deck pour continues at a segment of phase 1.



Aerial shot of a large crane pumping concrete to the segment of rebar.



Overnight work continue and progress can be seen on the installation of steel rebar at a particular segment.

Thank you for your patience!

We appreciate your patience and understanding as we work towards a safer and more efficient Gardiner Expressway.

Please share this email

To ensure widespread awareness, please share this email with your neighbours and encourage them to sign up for updates to stay informed with the latest information.

For more information

If you have any questions or have any suggestions for what you would like to see in this community update, please contact the field ambassador for this project, Madeleine Eleuteri, at GardinerS2info@parsons.com or 437-996-4065.

Stay tuned for the next update!