

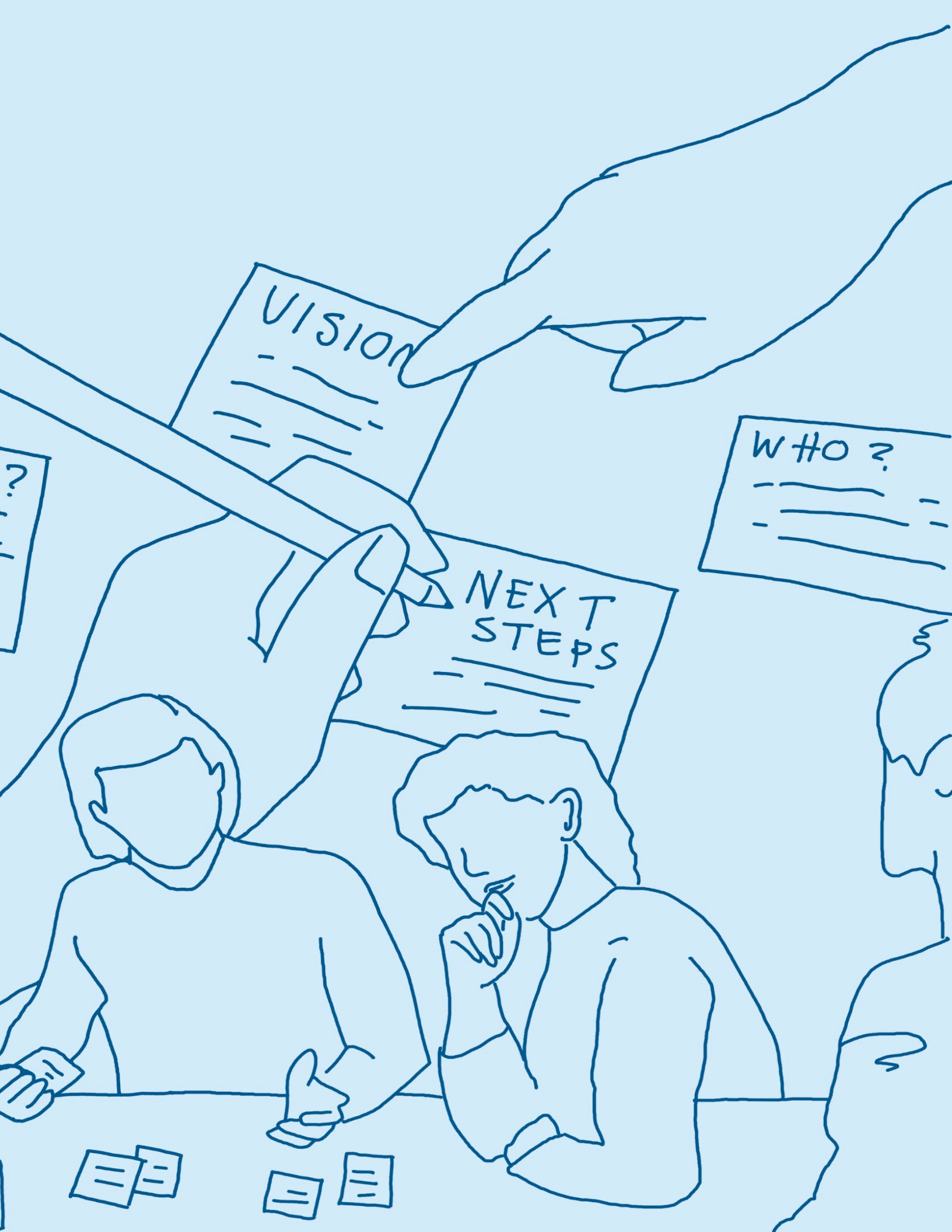
Online Thought Exchange Summary Report

New Park at 34 Hanna Ave.

Phase 1: Towards a Vision

November 2024





Contents

Online Thought Exchange Summary Report.....	0
Introduction	3
Phase 1: Towards a Vision	3
Thought Exchange	4
How We Reached People.....	4
Thought Exchange: Themes.....	4
Survey: Character.....	5
Survey: Features	5
Community Spotlight: Indigenous Placekeeping Consideration.....	6
Next Steps.....	7
Appendix	8
Appendix A: Character.....	8
Appendix B: Features	9
Appendix C: Demographics	10
Appendix D: Outreach	11

Introduction

A new 4,900 m² park (about the size of a soccer field) is coming to 34 Hanna Ave. – currently a Toronto Parking Authority parking lot at the southeast corner of Hanna Avenue and Liberty Street. The park’s design, amenities, and features will be determined through a community engagement process.

Phase 1: Towards a Vision

In this phase of the engagement process, the project team will collect feedback to develop a draft vision statement for the park, a series of guiding principles, and big moves which will guide the development of design options in Community Engagement Phase 2.

The community engagement activities in this phase include:

- an online Thought Exchange activity
- two Community Advisory Committee meetings

This report summarizes the Thought Exchange activity.

Thought Exchange

397

Participants

Community members were invited to participate in an online Thought Exchange activity from September 19 to October 10, 2024.

How We Reached People

The community was informed about the online Thought Exchange activity through the project webpage, project updates email list, an e-flyer sent to organizations in the Liberty Village area, local Councillor's office communications, signage posted on the site of the new park, and a social media ad that ran for about two weeks.

Thought Exchange: Themes

Participants were asked to complete the following statement: **“the new park at 34 Hanna Ave. should be a place where...”** Participants were then asked to rate the statements (or “thoughts”) that others had already shared.

397 participants contributed a total of 329 thoughts and 8,597 ratings. A full interactive report is available [online](#).

The most popular thoughts reflected the following themes:

- A natural, green oasis that provides an escape from the cars and concrete of the area.
- A sustainable green space with lots of grass, trees, and native plants to support biodiversity.
- A peaceful, quiet and calm place to slow down, relax, and escape the busy city.

The second most popular thoughts reflected the following theme:

- A safe place where people can come together, socialize, and enjoy small community events.

Participants flagged that there are already children's play areas and dog parks in the neighbourhood, with more people preferring that this be a park geared towards adults. Participants also expressed concerns about dog waste and other issues related to dogs.

Survey: Character

In the survey section of the Thought Exchange, participants were asked, **“What would you most like the character of the new park at 34 Hanna Ave. to be? Select your top 3 choices.”**

The following four park character choices were the most popular among respondents:

1. **Green and sustainable:** A place lush with trees and plantings, designed to conserve resources and create animal habitat (69 percent).
2. **Peaceful:** A calm oasis with places to sit and relax (52 per cent).
3. **Eventful:** A flexible space for small, local, outdoor events (such as community markets, performances and outdoor movie nights), that can change based on community needs (51 per cent).
4. **Social:** A space for meeting and gathering (35 percent)

See *Appendix A* for the full list of responses.

Survey: Features

In the survey section of the Thought Exchange, participants were asked, **“When you think about using this new park, what features do you feel are most important? Rank the following options in the order of most important to least important.”**

The following list of park features is ranked in order of popularity, with #1 being the most favoured by respondents and #9 being the least favoured:

1. Lots of places to sit
2. Flexible open green space
3. Trees and planting beds
4. Shade feature and/or pavilion with seating underneath

5. Flexible open paved space for events or gatherings
6. Sports courts (such as pickleball, tennis, or basketball)
7. Play equipment or a splash pad for children
8. Outdoor exercise equipment
9. Enclosed off-leash area for dogs

Community Spotlight: Indigenous Placekeeping Consideration

The project team determined that Indigenous Placekeeping for the new park will depend on community interest, as shown through the Thought Exchange results and possible future community engagement.

The overall number of residents in the Liberty Village area who identify as Indigenous make up 1.3% of the total population in the neighbourhood. This is slightly higher than the 0.98% of residents who identify as Indigenous in Toronto. See *Appendix C*.

In the survey question about demographics in the Thought Exchange, 3% of respondents identified as Indigenous to Canada, and 1% of respondents identified as Two-Spirit. See *Appendix C*.

In the survey question about preferred park character in the Thought Exchange, 16% of all Indigenous and non-Indigenous respondents selected “Indigenous: A Place that celebrates Indigenous ways of knowing and being” as one of their top three choices (see *Appendix A*). In proportion to the number of survey respondents who identify as Indigenous, this represents a significant number of the wider community (both Indigenous and non-Indigenous) who would like to see some form of Indigenous Placekeeping considered in the park design, even if it is not reflected as the primary park character.

Next Steps

The Community Advisory Committee (CAC) will work together with the project team to create a draft vision statement, guiding principles, and big moves to help guide the design of the new park. These will form the final outcomes of Phase 1 of the community engagement process. The project will then move into Phase 2 where the project team will work off the outcomes of Phase 1 to develop two design options for the new park. These will be presented to the community for feedback, which will be used to develop a preferred design for the park.

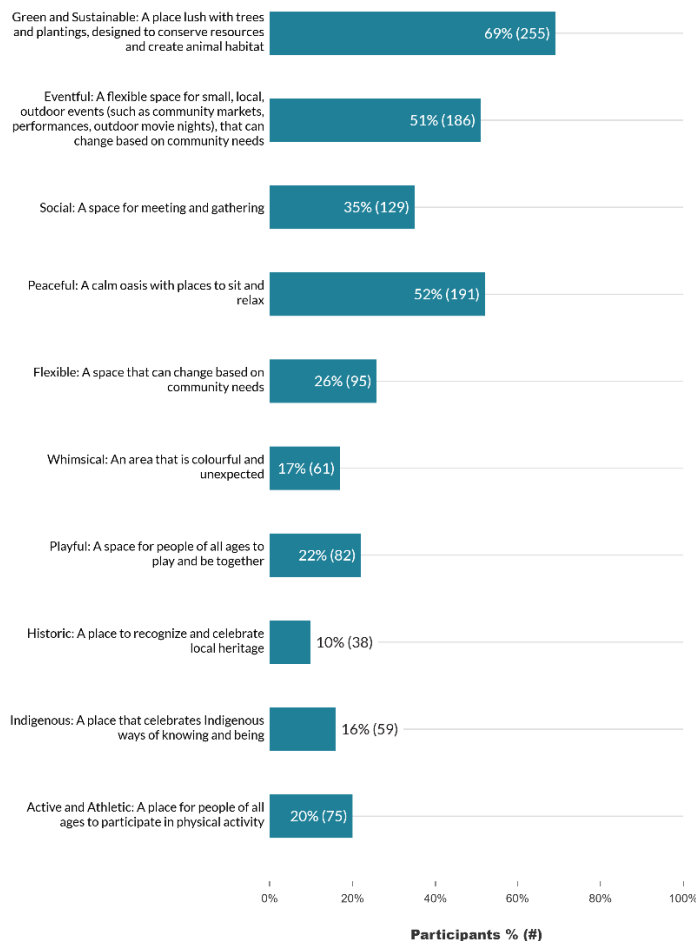
Please visit the project webpage to stay informed: toronto.ca/34hannapark

Appendix

To view all thoughts and ratings, visit the full interactive report [online](#).

Appendix A: Character

Multiple
select
Q1 What would you most like the character of the new park at 34 Hanna Avenue to be? Select your top 3 choices.
Answered: 367
Not answered: 30 ?



Appendix B: Features


Ranked answer

⋮

Q2

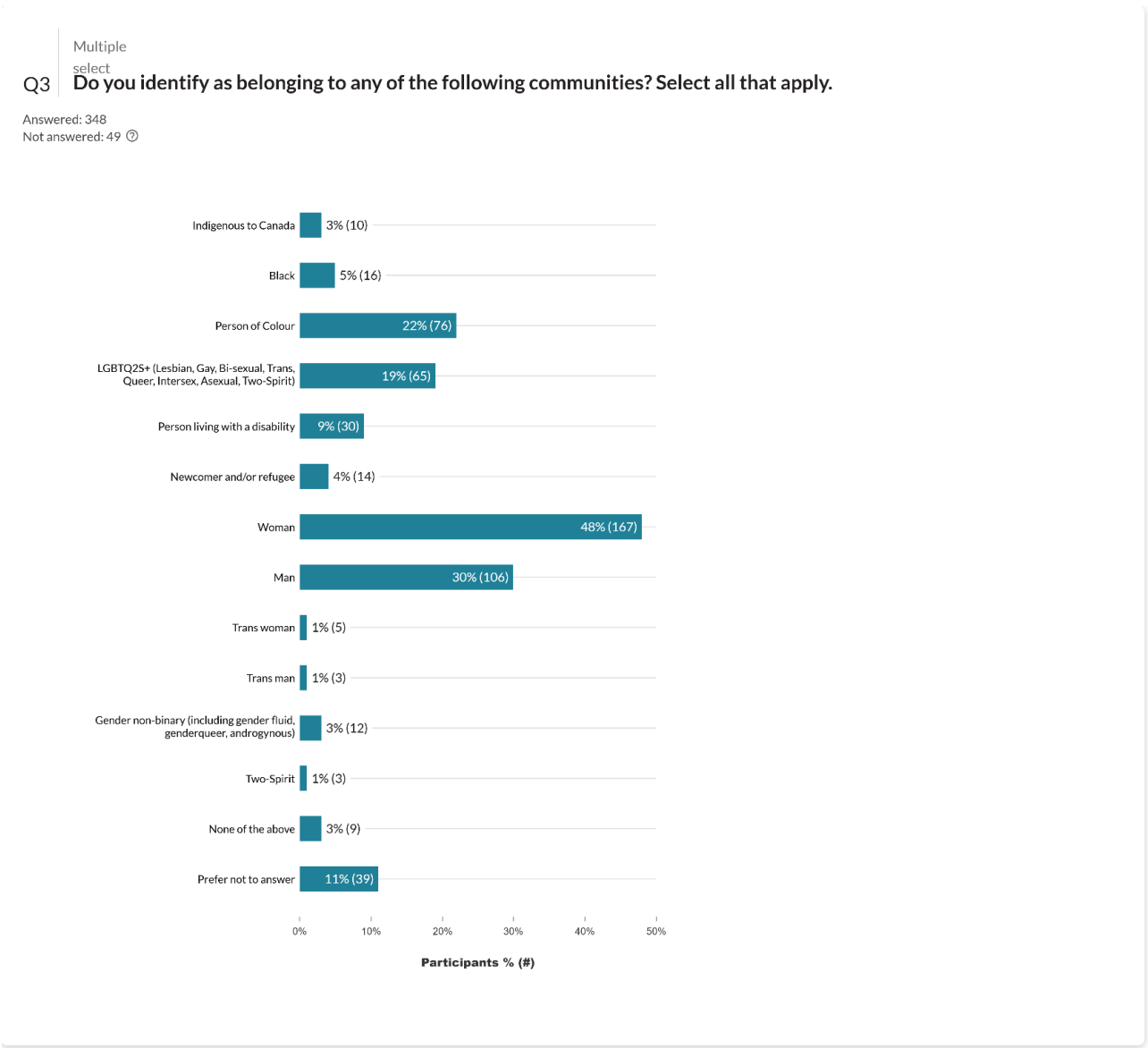
When you think about using this new park, what features do you feel are most important? Rank the following options in the order of most important to least important.

Answered: 350

Not answered: 47 

Ranking	Average ranking
#1 Lots of places to sit	2.88
#2 Flexible open green space	2.93
#3 Trees and planting beds	2.97
#4 Shade feature and/or pavilion with seating underneath	4.48
#5 Flexible open paved space for events or gatherings	5.54
#6 Sports courts (such as pickleball, tennis, or basketball)	6.33
#7 Play equipment or a splash pad for children	6.46
#8 Outdoor exercise equipment	6.49
#9 Enclosed off-leash area for dogs	6.91

Appendix C: Demographics



	%	Base Count	Base %	Index
Indigenous Identity				
Indigenous Identity	1.28	29,312	0.98	131

(Indigenous Identity data source: *Environics Analytics 2024*)

Appendix D: Outreach

Multiple
select
Q4 **How did you find out about this survey? Select all that apply.**

Answered: 347
Not answered: 50 ?

