

Construction Update: October 31, 2024

Gardiner Expressway Strategic Rehabilitation: Dufferin Street to Strachan Avenue | Community Update

Thank you for subscribing to the Gardiner Expressway Rehabilitation, Section 2 Dufferin Street to Strachan Avenue, community update e-newsletter.

Project Overview:

The project will take place in three stages, focusing on two lanes at a time while keeping four lanes open.

- Stage 1 south two lanes (current stage)
- Stage 2 middle two lanes
- Stage 3 north two lanes

Key elements of the construction project include:

- Preparation work (completed).
- Installing temporary support systems to allow for the construction work to safely take place while keeping two-thirds of the Expressway open.
- Demolishing and reconstructing the elevated roadway.
- Removing and replacing the bridge deck and the large beams (girders) that support the road.
- Rehabilitating the concrete support columns (bents).
- Finishing works.

Upcoming Overnight Lane Closure

An additional eastbound lane closure is scheduled to occur overnight from 11 p.m. on November 6 to 4:59 a.m. on November 7, weather permitting. During this time the eastbound traffic will be reduced to one lane between Dufferin Street and Strachan Avenue, and two westbound lanes will remain open.

Rehabilitation Progress Update: Here's what has been happening and what you can expect coming up.

Roadway: Demolishing and reconstructing the elevated roadway.

Completed:

- Stage 1 removal of the roadway has been fully completed.
- Stage 1 bridge deck concrete placement has been fully completed.
- Stage 1 southwest retaining wall and barrier wall removals have been completed.
- Stage 1 bridge deck south barrier wall concrete placement completed from Bent 10 to 21 (approx. 35m west to approx. 175m east of Exhibition Go Station).

- Stage 1 waterproofing fully completed from Bent 7 to Bent 31 (approx. 90m west to approx. 285m east of GO Station) and partially completed from West Abutment to Bent 7 (approx. 220m to approx. 90m west of GO station) and Bent 31 to 35.
- South barrier wall has been completed up to Bent 35.

What's happening this week:

- Stage 1 waterproofing will be ongoing from West Abutment to Bent 7 (approx. 220m to approx. 90m west of GO station) and Bent 31 to 35.
- Stage 1 bridge deck lighting duct installations is ongoing this week, starting at the west end and progressing eastwards.
- Stage 1 expansion joint assembly installation, reinforcement placement and concrete placement will be ongoing from Bent 19 to Bent 35 (approx. 135m to 350m east of the GO Station).
- Stage 1 concrete placement for the expansion joint at the west end approach slab and sleeper slab is ongoing this week.
- Stage 1 bridge deck light pole installation started on Tuesday, October 29..

Location of work:

- Work is being done behind the green construction screen on the roadway and underneath the roadway.

Girders: Removing and replacing the large beams (girders) that support the road. This process includes the prefabrication of the new girders.

Completed:

- Removal of girders in Stage 1 has been fully completed.
- Installation of girders in Stage 1 has been fully completed.
- Completed prefabrication of 334 precast girders produced till date.

What's happening this week:

- Temporary lightning mounted on the new girders in Stage 1.

Location of work:

- Work is being done behind the green construction screen on the roadway and underneath the roadway.
- Girders are being fabricated in a facility north of Toronto.

Bents: Rehabilitating the concrete support columns (bents)

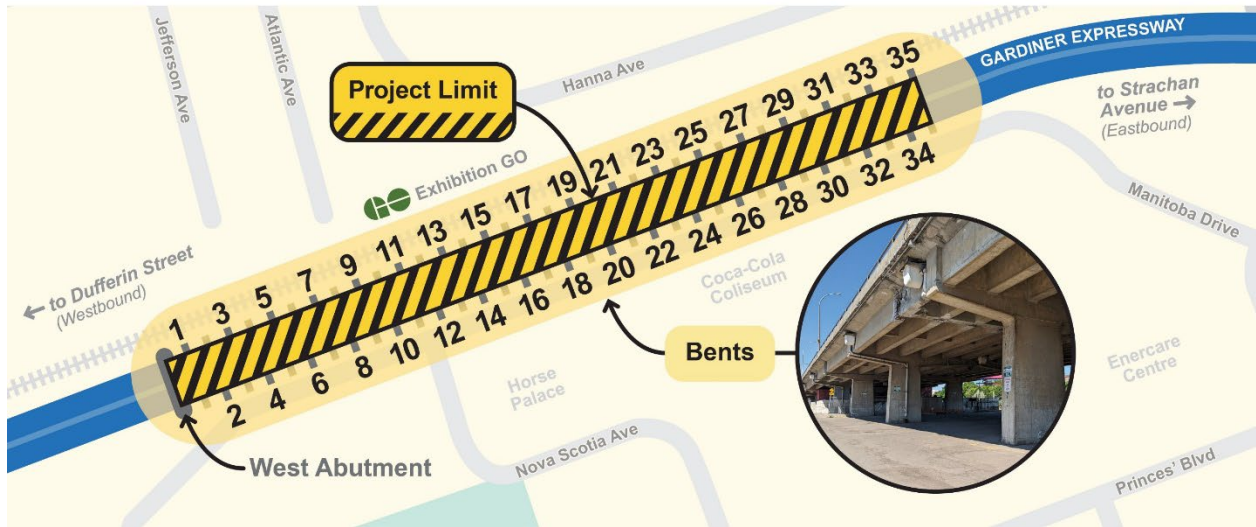
Completed:

- Finished removing the concrete from the bent caps between Bents 1 and 35 (approx. 205m west of Exhibition GO station to approx. 345m east of Exhibition GO station).
- Completed reconstruction of all bents in Stage 1. No further bent cap concrete placement in stage 1.

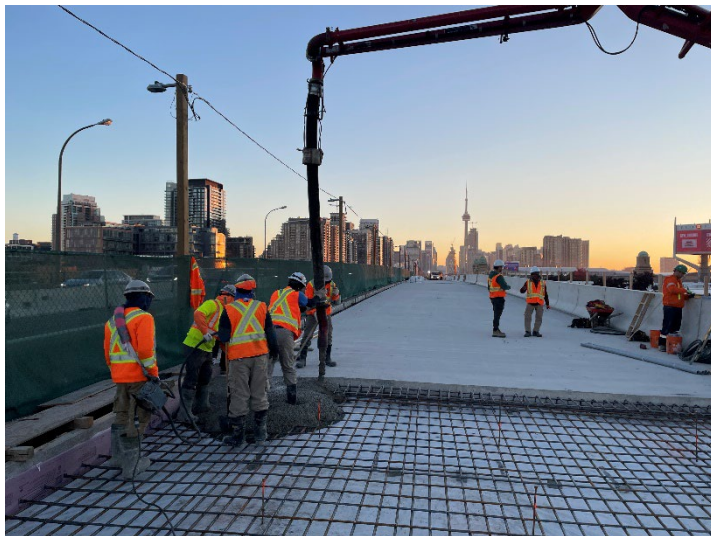
Location of work:

- Work is being done behind the green construction screen on the roadway and underneath the roadway.

Gardiner Expressway Strategic Rehabilitation: Dufferin Street to Strachan Avenue Map of Bent Locations



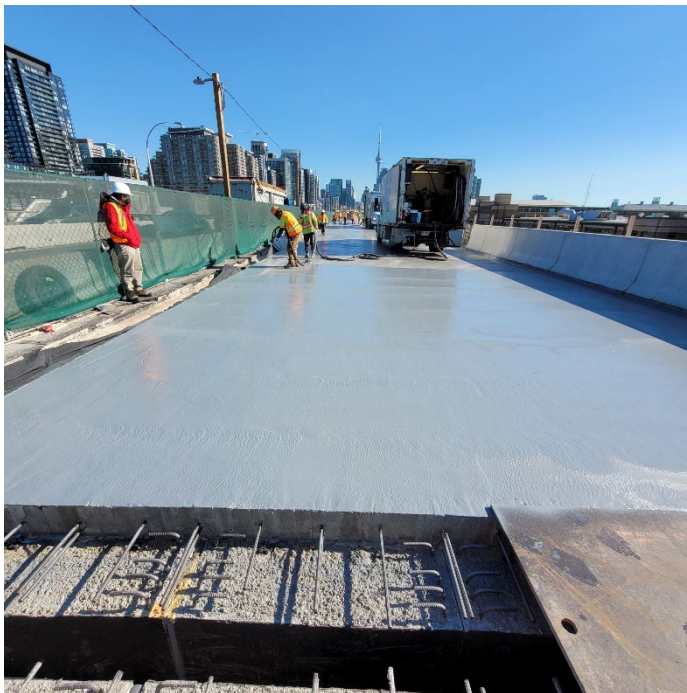
Visual Work on Site: The images below describe the type of work occurring on site during the week of October 28th, 2024.



Concrete pours that occurred over night and progress can be seen on the hardened concrete.



Barrier wall formwork assembly installation



Prep work for installation of Waterproofing occurred on the bridge deck.



Prep work for installation of Waterproofing.

Thank you for your patience!

We appreciate your patience and understanding as we work towards a safer and more efficient Gardiner Expressway.

Please share this email

To ensure widespread awareness, please share this email with your neighbours and encourage them to sign up for updates to stay informed with the latest information.

For more information

If you have any questions or have any suggestions for what you would like to see in this community update, please contact the field ambassador for this project, Madeleine Eleuteri, at GardinerS2info@parsons.com or 437-996-4065.

Stay tuned for the next update!