

Construction Update: November 28, 2024

## Gardiner Expressway Strategic Rehabilitation: Dufferin Street to Strachan Avenue | Community Update

Thank you for subscribing to the Gardiner Expressway Rehabilitation, Section 2 Dufferin Street to Strachan Avenue, community update e-newsletter.

### Project Overview:

The project will take place in three stages, focusing on two lanes at a time while keeping four lanes open.

- Stage 1 south two lanes
- Stage 2 middle two lanes (current stage)
- Stage 3 north two lanes

### Key elements of the construction project include:

- Preparation work (completed).
- Installing temporary support systems to allow for the construction work to safely take place while keeping two-thirds of the Expressway open.
- Demolishing and reconstructing the elevated roadway.
- Removing and replacing the bridge deck and the large beams (girders) that support the road.
- Rehabilitating the concrete support columns (bents).
- Finishing works.

### Demolition Work Update:

Last weekend, demolition activities began around 4 am on to allow for demolition work to take place safely outside TTC and Metrolinx operational hours as this work was directly above Exhibition Station and the TTC Loop. This type of work included the demolishing of the superstructure (bridge deck and concrete beams) and pier caps with the use of a hydraulic hammer.

Beginning on November 25, the contractor began demolition at 6 a.m., and these activities are expected to continue over the next three weeks. Noise monitoring is in place for this project. We will continue to keep the community updated as work progresses. We appreciate your patience as we work to enhance this critical piece of infrastructure.

### Roadway: Demolishing and reconstructing the elevated roadway.

Completed:

- Stage 2 asphalt removals completed the week of November 11, 2024.
- Stage 2 installation of construction fence for delineation of construction zone the week of November 11, 2024.

- Stage 2 bridge deck full depth saw cutting at north removal limits completed from West Abutment to Bent 35 (approx. 220m west to approx. 450m east of GO Station), till date.
- Stage 2 bridge deck demolition completed from West Abutment to Bent 11 (approx. 220m to approx. 20m west of GO Station) and from Bent 16 to Bent 20 (approx. 80m to approx. 155m east of GO Station), till date.
- Stage 2 bent cap full depth saw cutting at north removal limits completed from West Abutment to Bent 10 (approx. 220m to approx. 35m west of GO Station) and from Bent 17 to Bent 23 (approx. 100m to approx. 210m east of GO Station).

What's happening:

- Stage 2 scaffolding installation for bent cap construction ongoing from West Abutment to Bent 3 (approx. 220m to approx. 170m west of GO Station).
- Stage 2 bridge deck hand removals over steel girder section will be ongoing from Bent 11 to Bent 16 (approx. 20m west to approx. 80m east of GO Station).
- Stage 2 bridge deck demolition will be ongoing from Bent 20 to Bent 25 (approx. 155m to approx. 250m east of GO Station), progressing eastward.

Location of work:

- Work is being done behind the green construction screen on the roadway and underneath the roadway.

**Girders:** Removing and replacing the large beams (girders) that support the road. This process includes the prefabrication of the new girders.

Completed:

- Removal of girders in Stage 1 has been fully completed.
  - Installation of girders in Stage 1 has been fully completed.
- Completed prefabrication of 385 precast girders produced till date (November 28, 2024).

Location of work:

- Work is being done behind the green construction screen on the roadway and underneath the roadway.
- Girders are being fabricated in a facility north of Toronto.

**Bents:** Rehabilitating the concrete support columns (bents)

Completed:

- Completed reconstruction of all bents in Stage 1.

What's happening:

- Stage 2 bent cap full depth saw cutting at north removal limits will be ongoing at Bent 20 to Bent 30 (approx. 155m to approx. 345m east of GO Station).

Location of work:

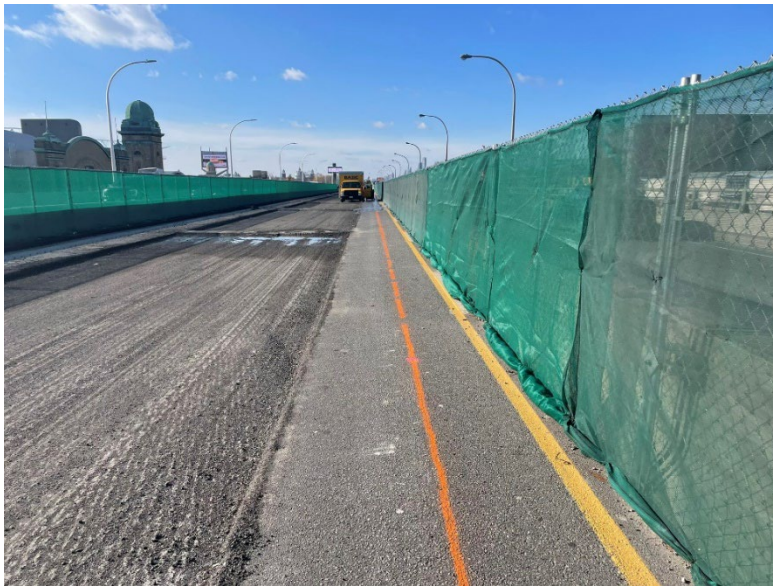
- Work is being done behind the green construction screen on the roadway and underneath the roadway.

For a visual map of the bent locations, visit the “Map of Work Area and Bent Location” tab on the [project website](#).

**Visual Work on Site:** The images below describe the type of work occurring on site during the week of November 18<sup>th</sup> and 25<sup>th</sup>, 2024.



Ongoing removal of bents, deck and girders located West of Exhibition GO Station.



Crews installing green construction screen on top of fence prior to demolition and reconstruction of the roadway.

### **Thank you for your patience!**

We appreciate your patience and understanding as we work towards a safer and more efficient Gardiner Expressway.

### **Please share this email**

To ensure widespread awareness, please share this email with your neighbours and encourage them to sign up for updates to stay informed with the latest information.

### **For more information**

If you have any questions or have any suggestions for what you would like to see in this community update, please contact the field ambassador for this project, Madeleine Eleuteri, at [GardinerS2info@parsons.com](mailto:GardinerS2info@parsons.com) or 437-996-4065.

Stay tuned for the next update!