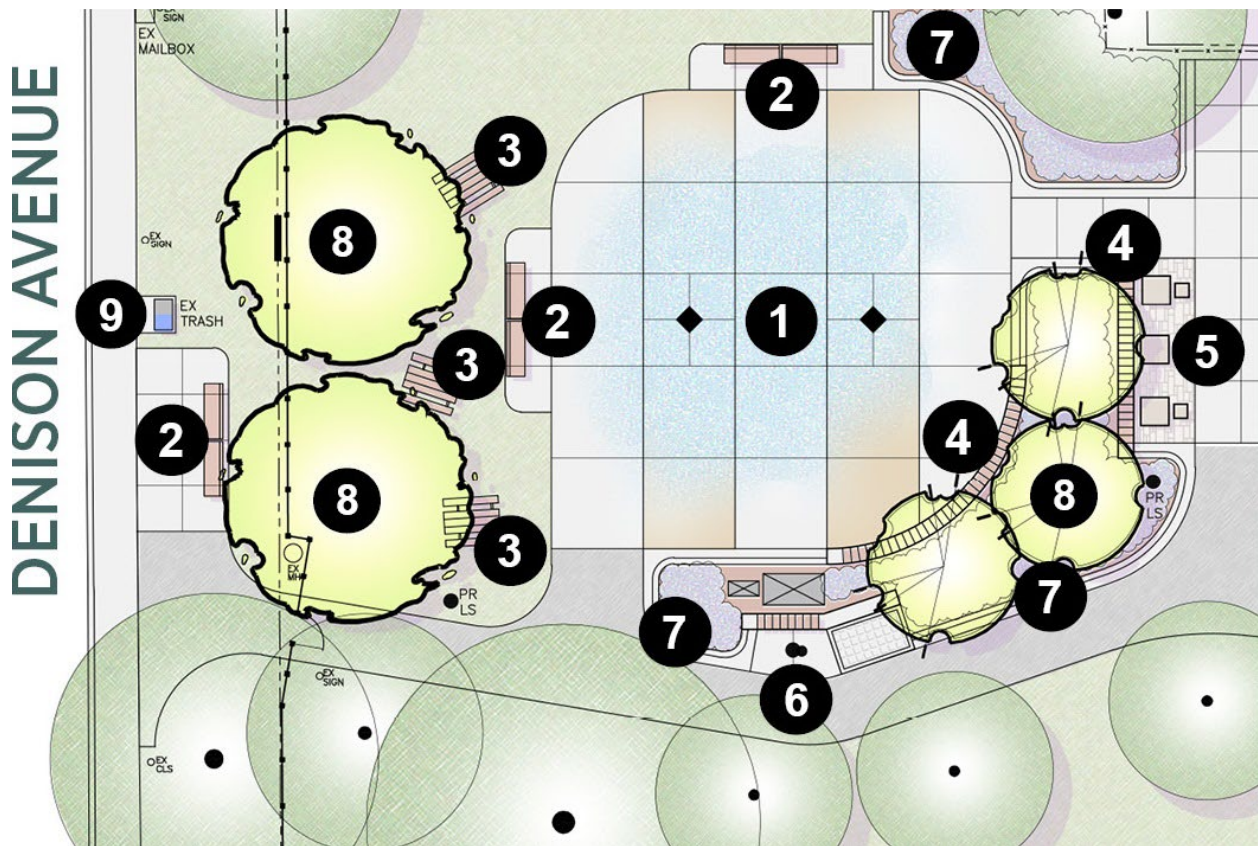


Randy Padmore Park Improvements

As part of a future project, the existing wading pool may be replaced by a new interactive water feature and other amenities, including new seating and planting areas. The project to replace the wading pool and make additional park improvements is anticipated to start in 2028/2029.

Wading Pool Replacement Design Options

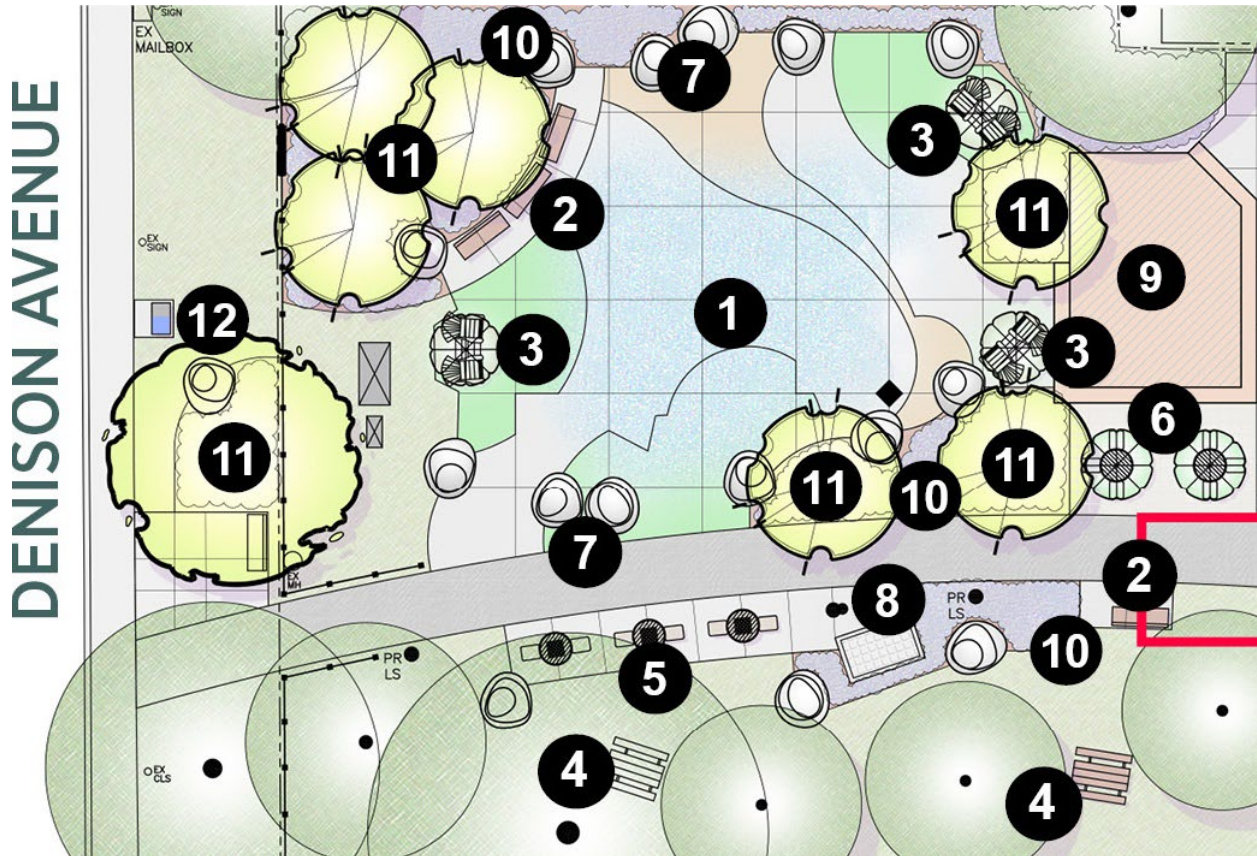
Design A



Legend:

1. Splash pad (traditional theme)
2. Benches
3. Picnic tables
4. Concrete seatwalls with backless bench top
5. Games tables (e.g. chess, checkers)
6. Drinking fountain and bottle filler with dog fountain
7. New planting beds
8. New deciduous trees
9. Trash and recycling bins

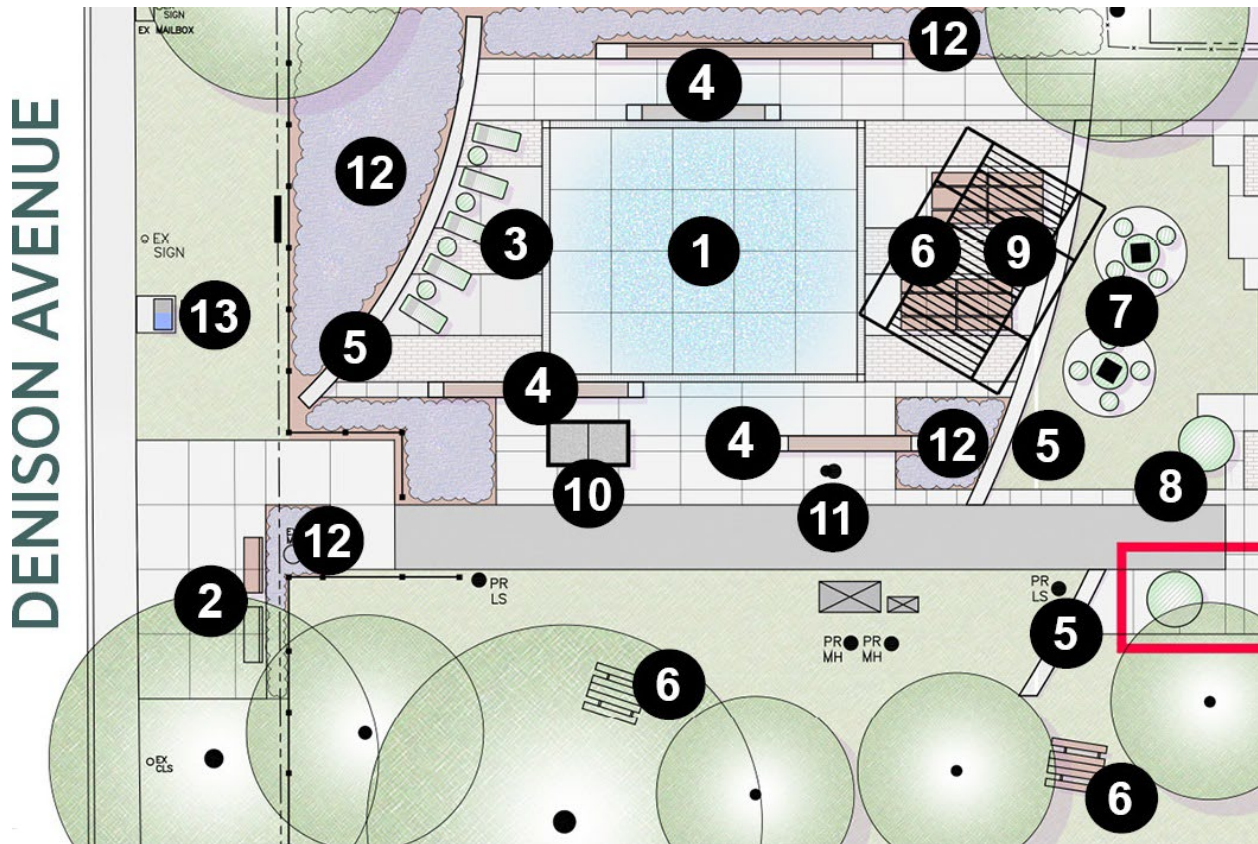
Design B



Legend:

1. Splash pad (wetland theme)
2. Benches
3. Muskoka chairs with umbrellas
4. Picnic tables
5. High top tables
6. Patio tables with umbrellas
7. Boulders
8. Drinking fountain and bottle filler with dog bowl
9. Raised platform/yoga deck
10. Planting beds
11. New deciduous trees
12. Trash and recycling bins

Design C



Legend:

1. Interactive all-ages water feature
2. Benches
3. Lounge chairs with tables
4. Concrete seatwalls with bench top
5. Concrete seatwalls
6. Picnic tables
7. Pod seats with games tables
8. Pod seats and tables
9. Shade structure
10. Ping pong table
11. Drinking fountain and bottle filler with dog bowl
12. Planting beds
13. Trash and recycling bins