

Construction Update: January 17, 2025

Gardiner Expressway Strategic Rehabilitation: Dufferin Street to Strachan Avenue | Community Update

Thank you for subscribing to the Gardiner Expressway Rehabilitation, Section 2 Dufferin Street to Strachan Avenue, community update e-newsletter.

Project Overview:

The project will take place in three stages, focusing on two lanes at a time while keeping four lanes open.

- Stage 1 south two lanes
- Stage 2 middle two lanes (current stage)
- Stage 3 north two lanes

Key elements of the construction project include:

- Preparation work (completed).
- Installing temporary support systems to allow for the construction work to safely take place while keeping two-thirds of the Expressway open.
- Demolishing and reconstructing the elevated roadway.
- Removing and replacing the bridge deck and the large beams (girders) that support the road.
- Rehabilitating the concrete support columns (bents).
- Finishing works.

Lane Reductions

From 11 p.m. to 5 a.m., nightly, between Sunday, January 19 and Thursday, January 23, the eastbound Gardiner Expressway will be reduced to one lane between Dufferin Street and Strachan Avenue, to facilitate the installation of new girders (large beams that support the elevated roadway).

From 12:01 a.m. to 7 a.m. on Saturday, January 25, the eastbound Gardiner Expressway will be reduced to one lane between Dufferin Street and Strachan Avenue to complete girder installation.

Roadway: Demolishing and reconstructing the elevated roadway.

Completed:

- Stage 2 bridge deck demolition.
- Stage 2 scaffolding installation for bent cap construction completed from West Abutment to Bent 10 (approx. 220m to approx. 35m west of GO Station) and from Bent 17 to Bent 26 (approx. 100m to approx. 285m east of GO station)

What's happening:

- Stage 2 scaffolding installation for bent cap construction ongoing from Bent 27 to Bent 29 (approx. 285m to approx. 325m east of GO Station).

Location of work:

- Work is being done behind the green construction screen on the roadway and underneath the roadway.

Girders: Removing and replacing the large beams (girders) that support the road. This process includes the prefabrication of the new girders.

Completed:

- Removal of girders in Stage 1 and 2 has been fully completed.
- Installation of girders in Stage 1 has been fully completed.
- Completed prefabrication of 436 precast girders produced till date.

What's happening:

- Stage 2 girder installation from West Abutment to Bent 5 (approx. 220m to approx. 130m west of GO Station).

Location of work:

- Work is being done behind the green construction screen on the roadway and underneath the roadway.
- Girders are being fabricated in a facility north of Toronto.

Bents: Rehabilitating the concrete support columns (bents)

Completed:

- Completed reconstruction of all bents in Stage 1.
- Stage 2 bent cap demolition has been completed.
- Stage 2 installation of temporary support at bent caps completed from Bent 1 to Bent 30 (approx. 205m to west of Exhibition Go Station to approx. 350m east of Exhibition Go Station).
- Stage 2 bent cap full depth saw cutting at north removal limits completed from West Abutment to Bent 10 (approx. 220m to approx. 35m west of GO Station) and from Bent 17 to Bent 30 (approx. 100m to approx. 345m east of GO Station).
- Stage 2 construction of new bent caps completed from West Abutment to Bent Cap 13 (approx. 220m to approx. 20m east of GO Station).

What's happening:

- Stage 2 concrete placement for bent caps from Bent 11 to Bent 13 (approx. 20m west to approx. 20 east of GO Station).
- Stage 2 scaffolding installation for bent cap construction ongoing at Bent 27 and Bent 29 (approx. 285m to approx. 325m east of GO Station)
- Stage 2 reinforcement and formwork installation for Bent Caps ongoing from Bent 14 to Bent 21 (approx. 40m to approx. 175m east of GO Station).
- Stage 2 partial depth concrete removals for top of bent caps ongoing at Bent 35 (approx. 450m east of GO Station).

Location of work:

- Work is being done behind the green construction screen on the roadway and underneath the roadway.

For a visual map of the bent locations, visit the “Map of Work Area and Bent Location” tab on the [project website](#).

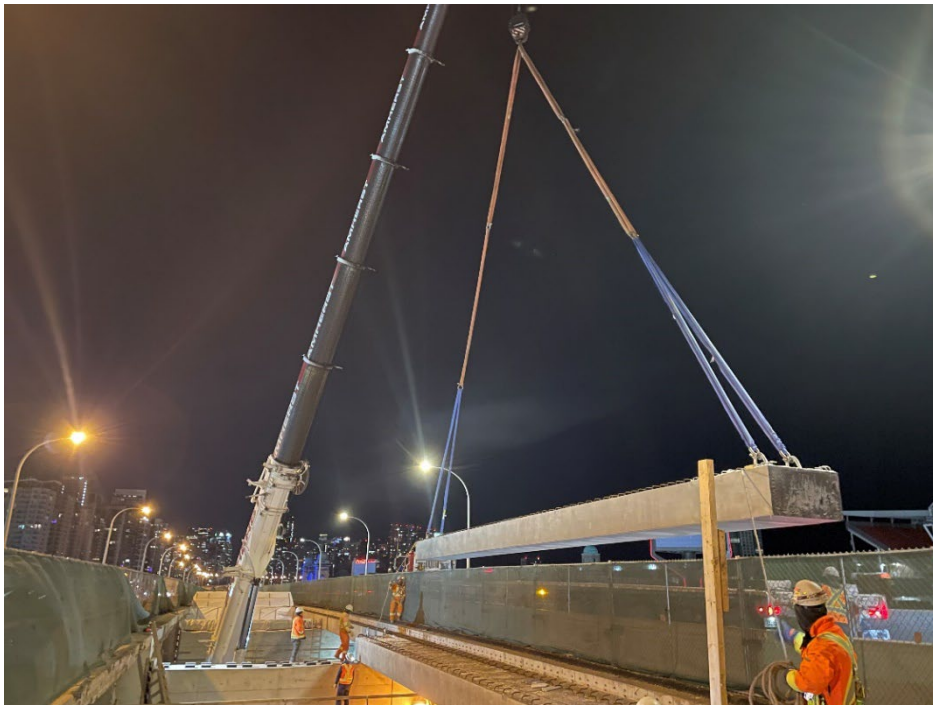
Visual Work on Site: The images below describe the type of work occurring on site during the week of January 13th, 2025.



Completed bridge deck from the west side looking east.



Crews setting up the tent enclosure to protect the concrete during cold weather conditions, while the concrete cures. Scaffolding (support system for formwork) for bent cap reconstruction is ongoing.



A large crane can be seen lifting one precast concrete girder into place from a temporary lane closure on the expressway.

Thank you for your patience!

We appreciate your patience and understanding as we work towards a safer and more efficient Gardiner Expressway.

Please share this email

To ensure widespread awareness, please share this email with your neighbours and encourage them to sign up for updates to stay informed with the latest information.

For more information

If you have any questions or have any suggestions for what you would like to see in this community update, please contact the field ambassador for this project, Madeleine Eleuteri, at GardinerS2info@parsons.com or 437-996-4065.

Stay tuned for the next update!