

Sewer Connections, Creek Improvements and Underground Offline Storage Tank

1240 Sheppard Ave. E. at Leslie St.



February 24, 2025



Land Acknowledgement

- We acknowledge the land we are meeting on is the traditional territory of many nations including the Mississaugas of the Credit, the Anishnabeg, the Chippewa, the Haudenosaunee and the Wendat peoples and is now home to many diverse First Nations, Inuit and Métis peoples. We also acknowledge that Toronto is covered by Treaty 13 with the Mississaugas of the Credit.

Ancestral Acknowledgement

- The City of Toronto acknowledges all Treaty peoples – including those who came here as settlers – as migrants either in this generation or in generations past – and those of us who came here involuntarily, particularly those brought to these lands as a result of the Trans-Atlantic Slave Trade and Slavery. We pay tribute to those ancestors of African origin and descent.

Agenda

- Project Background
- City-wide DRCW Program Overview & Video
- Completed Phase 1 work
- Planned Phase 2 Work
- Planned Phase 3 Work
- Timeline, Construction Impacts and Restoration Plans
- Next Steps

Project Background

International
Joint Commission (1987)

TO waterfront 1 of 43
Polluted
“Areas of Concern”

Wet Weather
Flow Master Plan
(2003)

- Source Controls
- Conveyance controls
- End-of-pipe controls

Don River &
Central Waterfront
Class EA (2012)
25+ year
Multi-Billion \$ Program
In-Progress

Don River & Central Waterfront (DRCW) Program

- Keep combined sewer overflow out of the Don River, Taylor-Massey Creek and Toronto's Western and Inner Waterfront
- Build upgrades to manage the combined sewer overflow within the sewer and wastewater system

Not shown – seven
offline storage tanks

**Coxwell Bypass
Tunnel**

10.6 km / 6.3m Dia

**Taylor-Massey
Creek Tunnel**

6 km / 4.4m Dia

**Western Beaches
Tunnel**

3.6 km / 3m Dia

**Inner Harbour
West Tunnel**

5.5 km / 6.3m Dia

LAKE ONTARIO

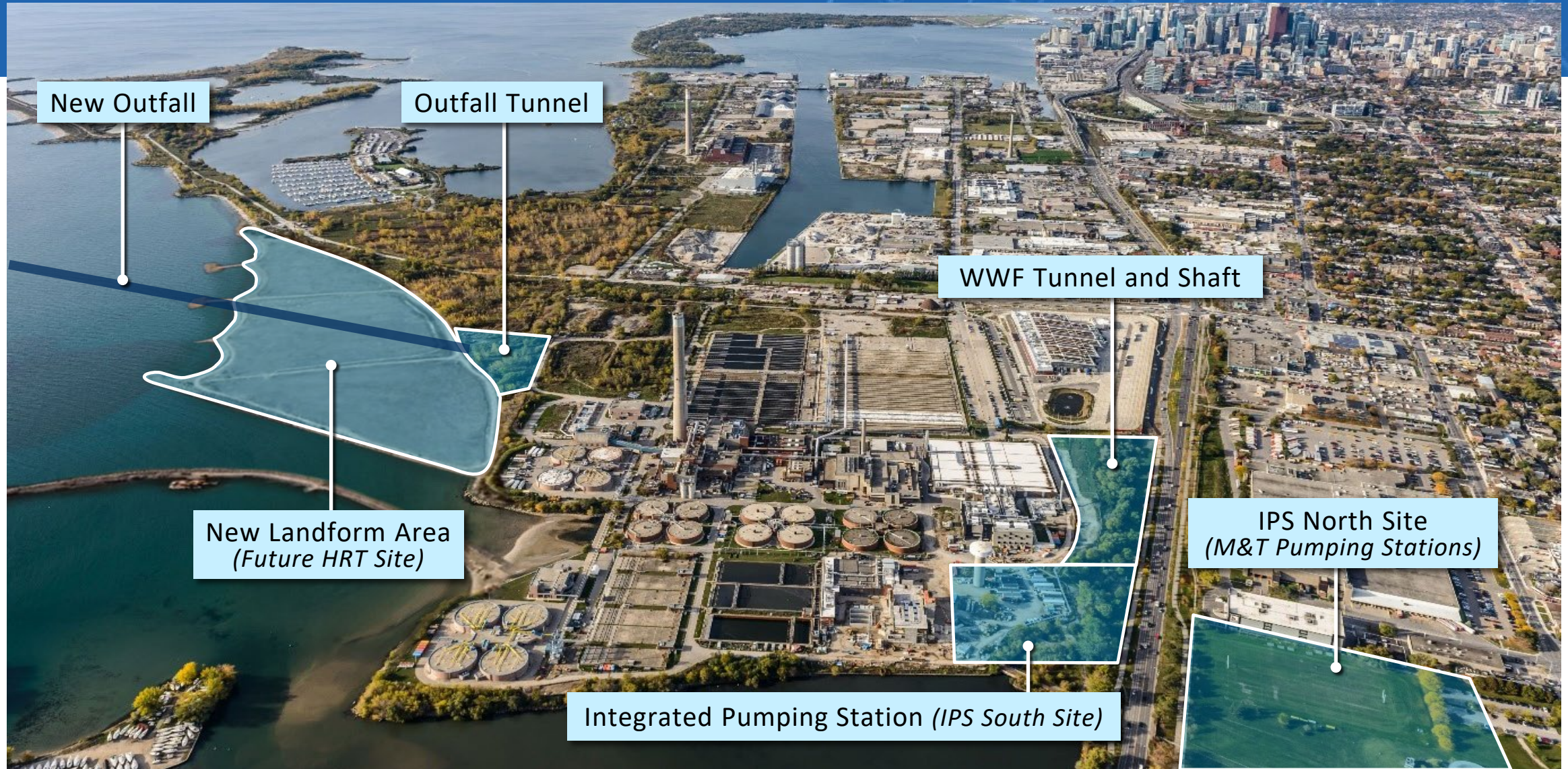
ABTP

Integrated Pumping Station

High-Rate Treatment Facility

Outfall to Deep Waters

Ashbridges Bay Treatment Plant Site



Don River Central Waterfront Stormwater Management Projects

To learn more, please visit the link below:

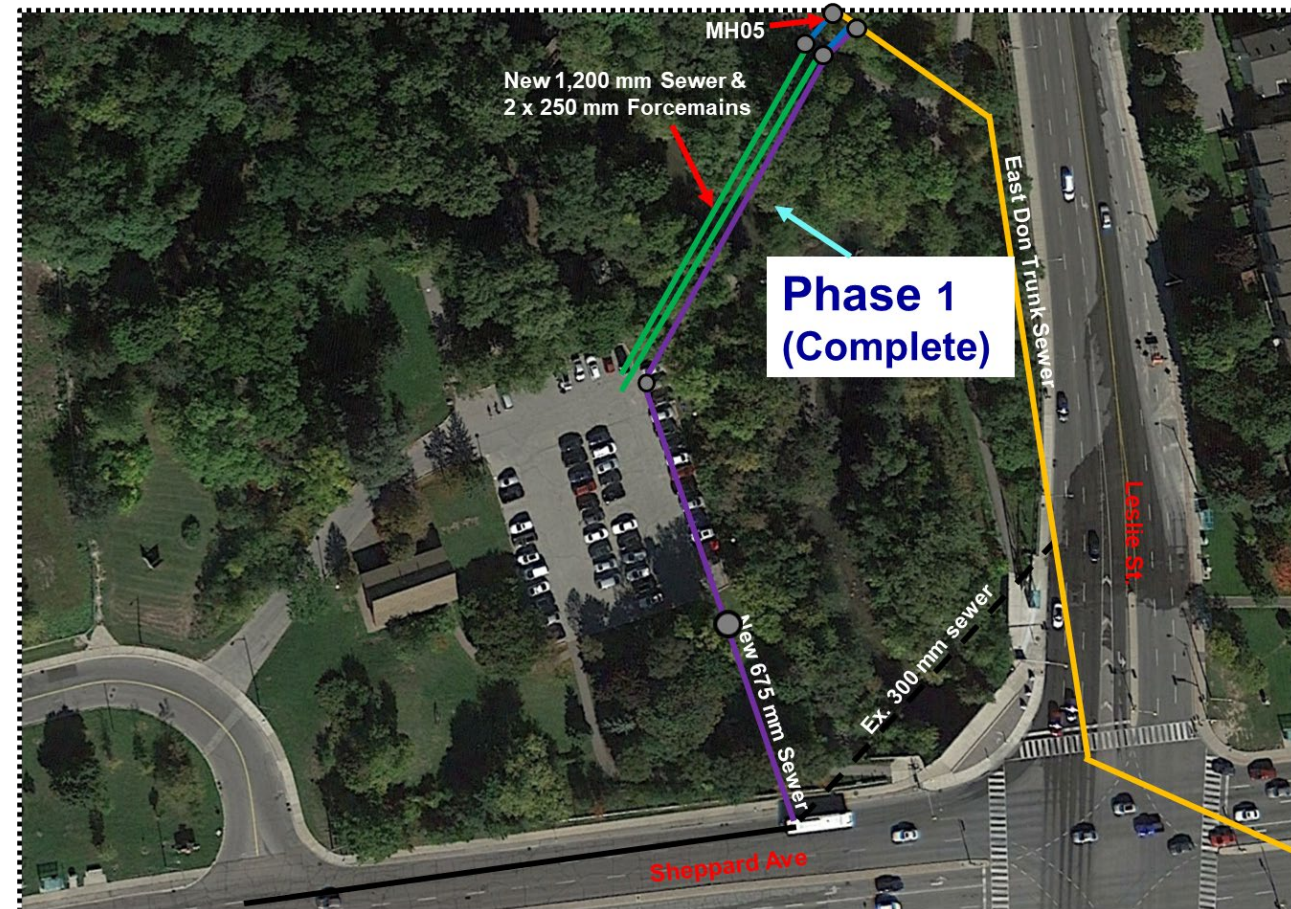
<https://www.toronto.ca/services-payments/water-environment/managing-rain-melted-snow/what-the-city-is-doing-stormwater-management-projects/lower-don-river-taylor-massey-creek-and-inner-harbour-program/>

Project Work Scope Overview

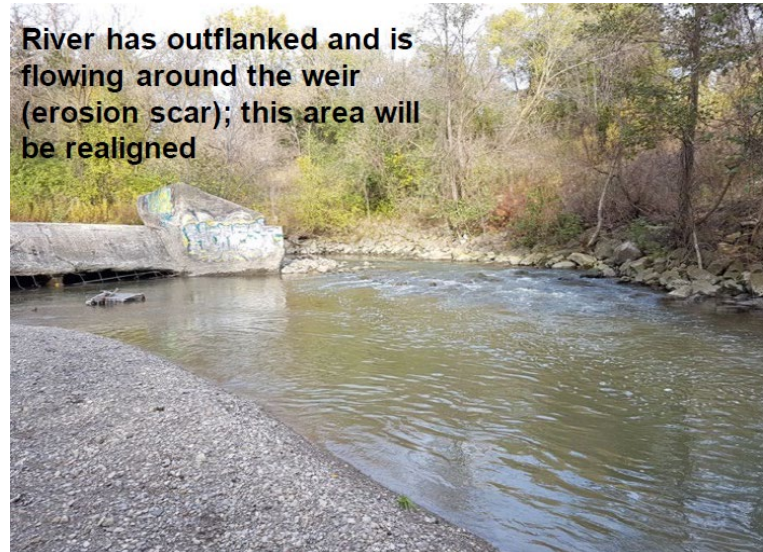
- Phase 1 - Sewer Replacement, Weir Removal and River Stabilization & Naturalization
- Phase 2 - Underground Storage Tank (and demolition of washroom building)
- Phase 3 – Above-Ground Pumping Station and Public Washroom Buildings

Phase 1 - Work Scope Summary

- Construction of open-trench (under-the-river) river crossing for:
 - 675mm sanitary sewer
 - 1200mm tank in-flow sewer
 - Two 250mm tank out-flow sewers
 - 6 maintenance holes
- Removal of old weir
- Site restoration and revegetation



Phase 1 - Weir Removal



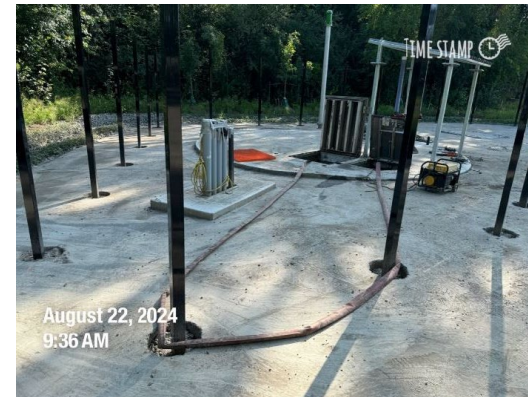
Phase 1 – completed Work

- River bypass, under-river sewer trench, bridge protection



Phase 1 – Completed Work (continued)

- MH4 and MH5 sewer connections to main trunk sewer



Phase 1 - Riverbed & River Bank Improvements

- Riverbed lining, riverbank vegetated revetment & restoration work

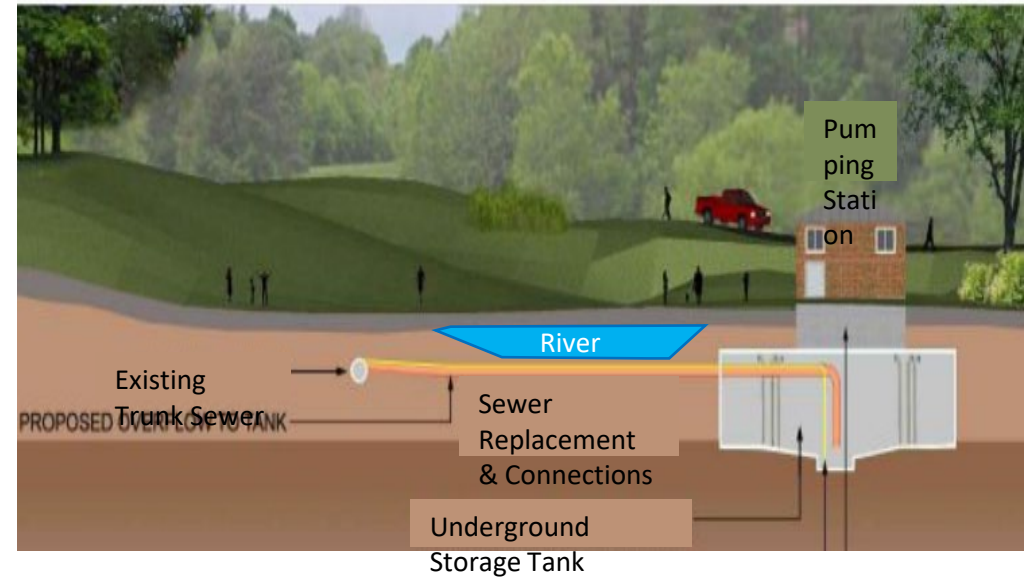
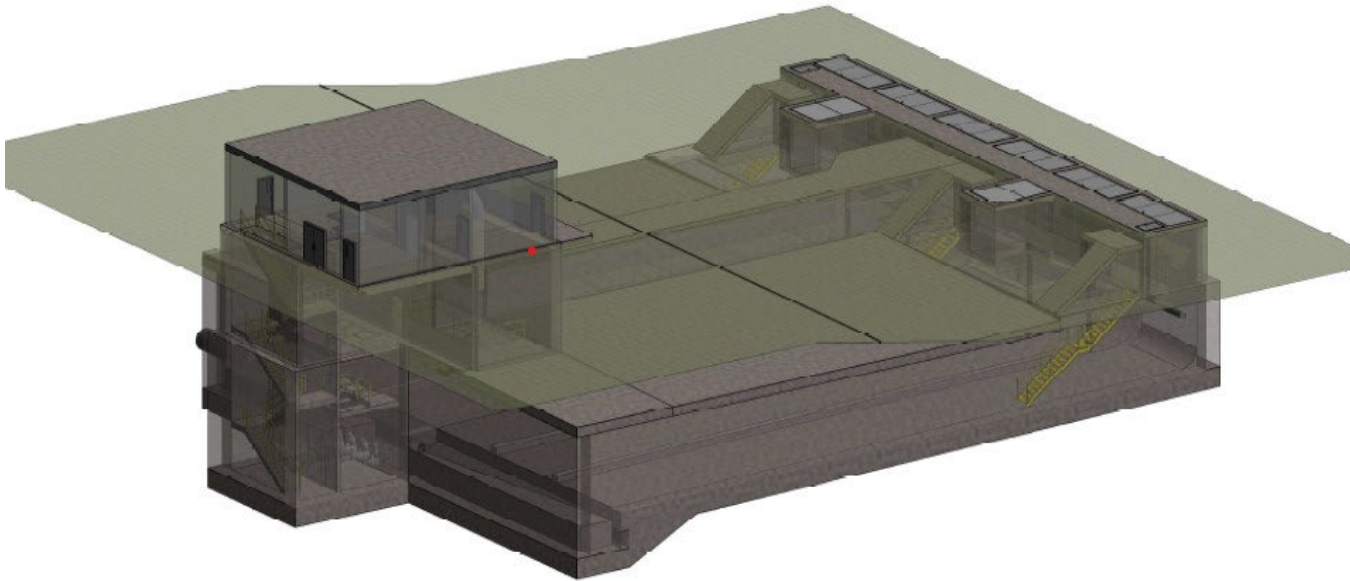


Phase 1 - Fenced Enclosure Along Bike Path



Planned Phase 2 Work

- Construction of underground storage tank



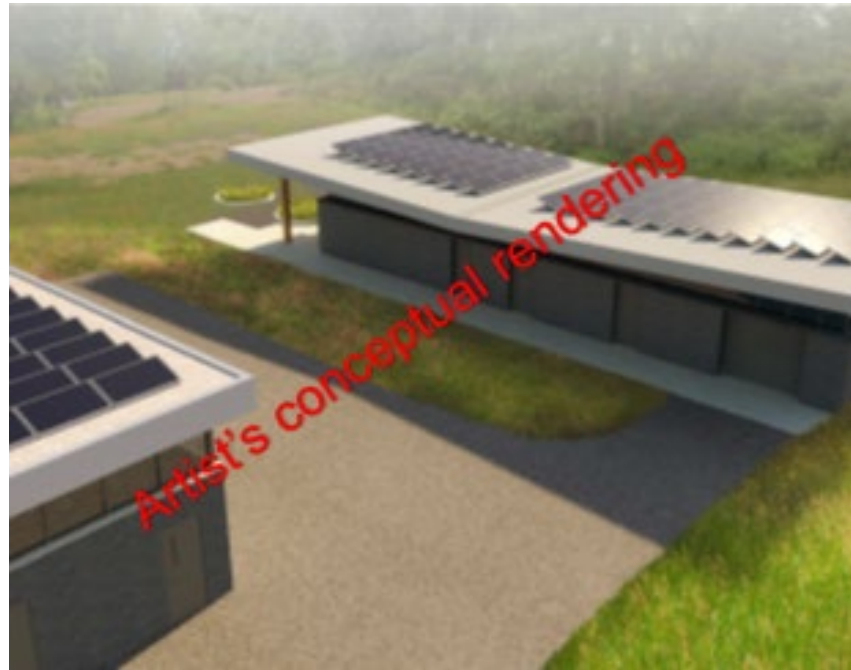
Phase 2 Construction Work Scope Summary



- Construction of:
 - 4500 m³ offline underground storage tank
 - Washroom demolition
 - 1200mm tank in-flow sewer
 - Two 250mm tank out-flow sewers
 - 250mm sanitary gravity sewer
 - 450mm sanitary bypass sewer

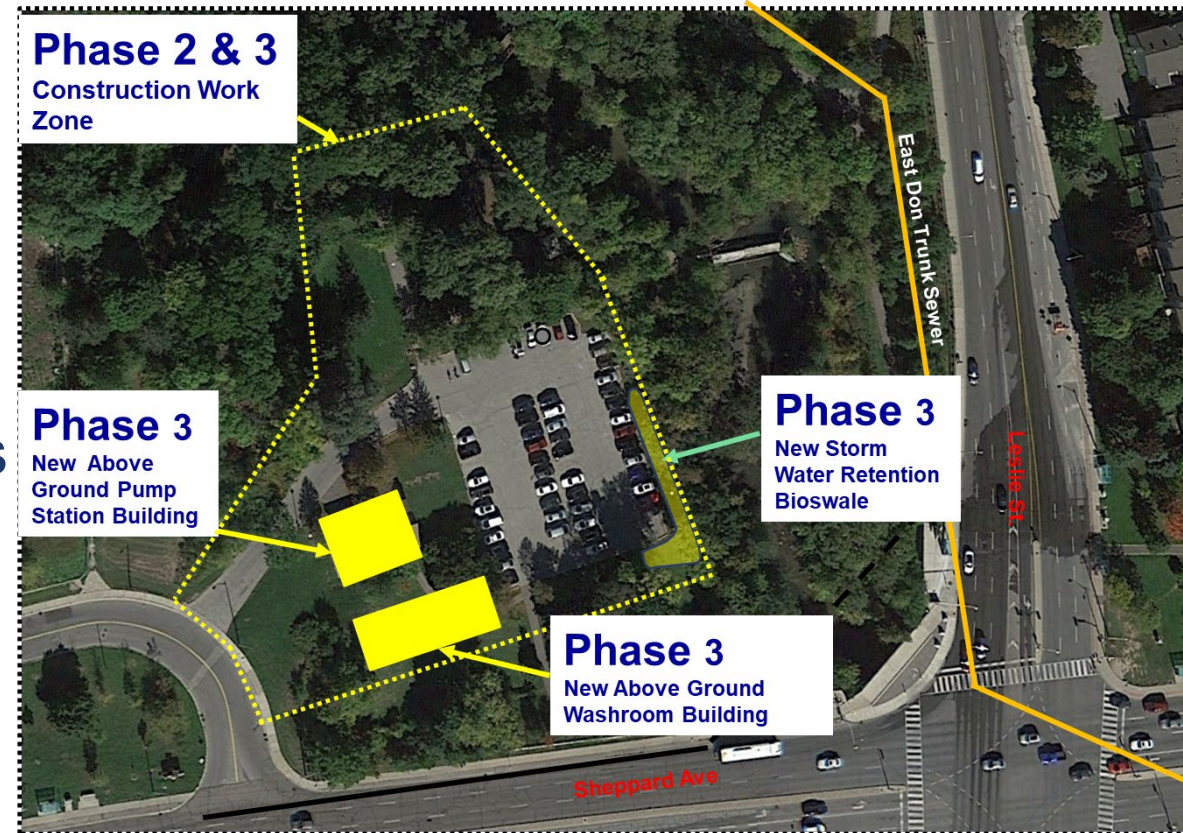
Planned Phase 3 Work

- Construction of: above-ground pump station building and washroom building; stormwater retention bioswale; repaving of parking lot & access driveway; and site restoration

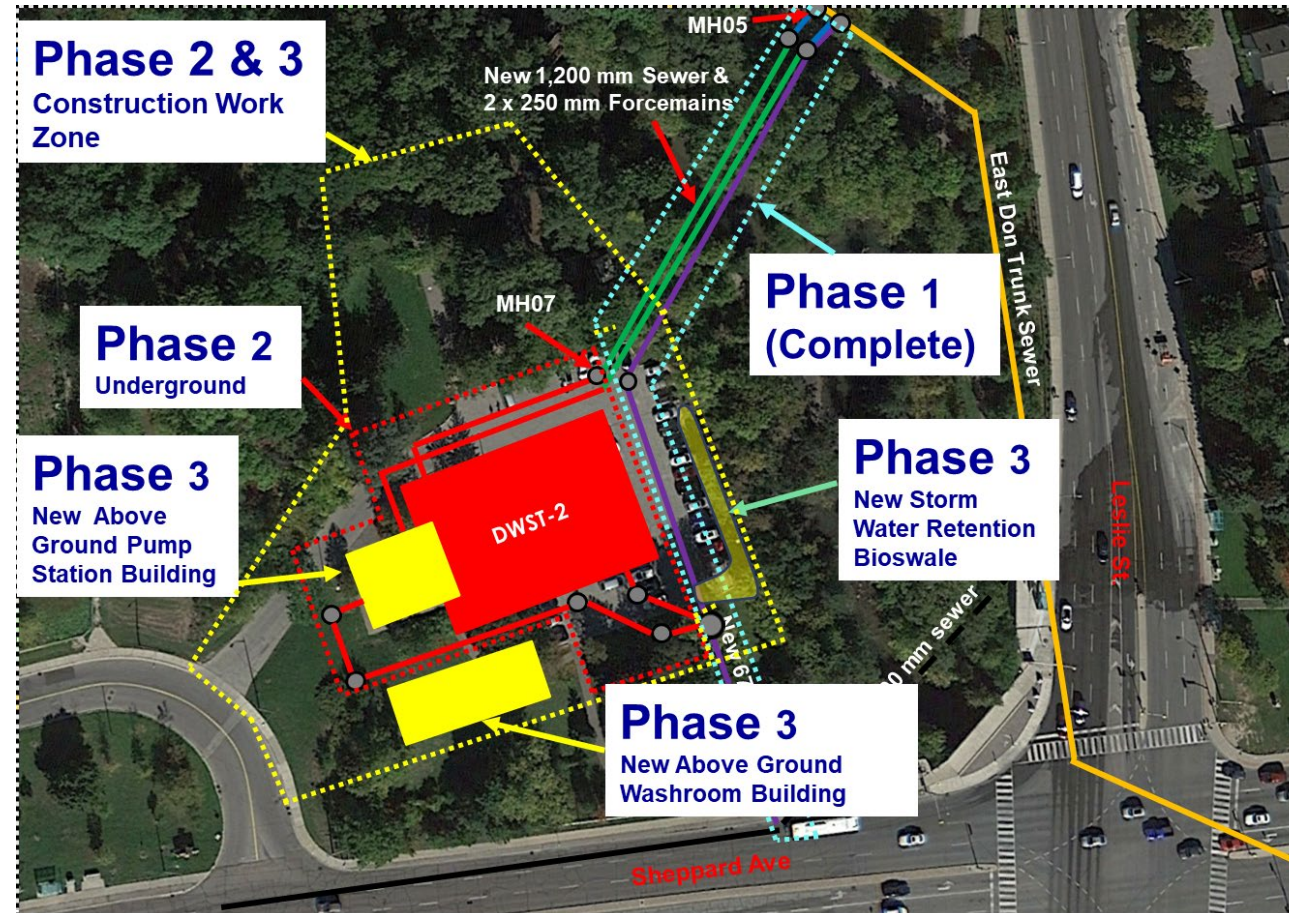


Phase 3 Construction Work Scope Summary

- Construction of:
 - above-ground pump station building
 - Above-ground washroom building
 - Stormwater retention bioswale
 - Repaving of parking lot and access driveway
 - Site restoration and revegetation



Phases 1, 2 & 3 – Work Zones



Timeline & Construction Impacts

Anticipated Timeline

Phase 2 Pre-Construction

- Q3 2024 to Q1 2025 permitting
- Q2 2025 Tender issue
- Q4 2025 Tender award

Phase 2 Construction: Q4 2025 to 2027

- Underground Storage Tank

Phase 3 Construction: 2028 to 2029

- Above-ground building including pumping station and washroom
- Bioswale
- Restoration including landscaping/revegetation and repaving the driveway and parking lot

Park Paths

Access: path on east side of river will be re-opened end of 2024

Pedestrian Bridge: Closed until end of 2029

Recommended Access: Villaways, Clarinda, Leslie access points

Washroom

- Will be demolished
- portable washrooms installed and to remain until 2029

Parking Lot

- Will be closed until 2029

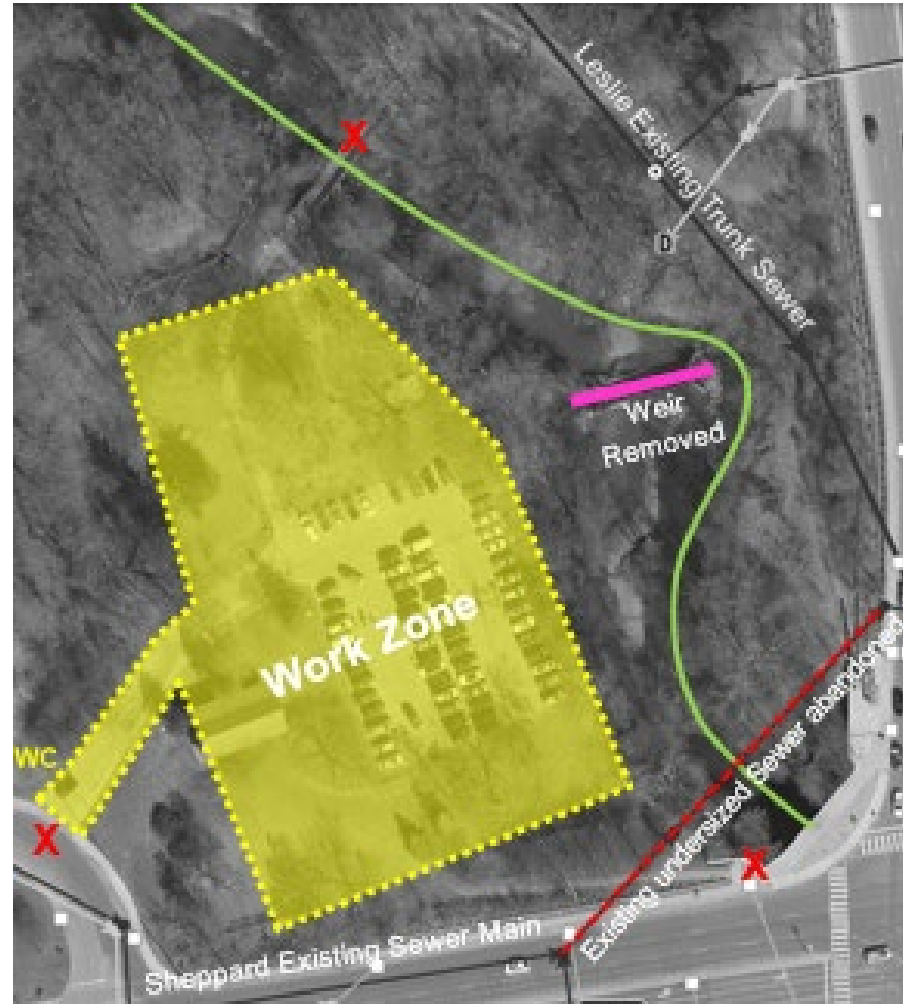
Transportation

- Truck traffic on Sheppard for off-site haulage of 16,000 m³ of soil (TBD weeks)
- Some traffic impacts due to cement trucks
- No impacts to TTC, Leslie or other nearby road projects

Phase 2 & 3 Tree Impacts

- Impacted trees replaced as per TRCA & Urban Forestry

Phase 2 & 3 Construction Work Zone



Construction: Impacts & Park Access

△	New Maintenance Hole
★	Public washroom closed until 2029
X	Access point closures and pedestrian bridge closure
WC	Temporary Portable Washrooms
<ul style="list-style-type: none">No impacts to alternate Villaways Park, Clarinda and Leslie St trail access points	



Park Trails to be Reopened and Closed

Trail Impacts Until the End of 2024



Trail Impacts from mid-2025 to 2029



Site Restoration

Natural Channel Design Improvements were completed in Phase 1:

- Riffles, Ribs and Shallow Pools created
- Riverbed was re-lined with river rock
- Vegetate Boulder Revetment on riverbanks (manually placed boulders with trees/vegetation planted between boulders)

Parking Lot & Driveway

- Will be replaced/restored at end of Phase 3

Park & Paths

- All access points and trails on east side of the East Don River will be restored at end of Phase 1
- All access points and trails on west side of the East Don River will be restored at end of Phase 3

Washroom Building:

- Replacement building will include public washroom in new location south-west of parking lot at end of Phase 3

Trees & Plantings (for Phase 1)

- planting of over 300 new trees, native shrubs & re-seeding was completed along both river banks & on the east side of the river in Phase 1
- Similar vegetative restoration will be done on the west side of the river at the end of Phase 3

Next Steps & Updates

Near Term:

1. Circulate Notice Of Intended Procurement

In coming months:

1. Issue Phase 2 Tender – Q2 2025
2. Award Phase 2 construction contract and Issue Pre-Construction Notice – Q3 to Q4 2025
3. Phase 2 construction start Q4 2025

Ellen Leesti, Strategic Support and Issues Management

Keith Chu, Coordinator Issues Management

George Theodorlis, Senior Engineer and Project Manager

Questions

Project Web Page – [Toronto.ca/eastdonriver](https://toronto.ca/eastdonriver)

Comments – eastdonriver@toronto.ca

