

Construction Update: March 4, 2025

Gardiner Expressway Strategic Rehabilitation: Dufferin Street to Strachan Avenue | Community Update

Thank you for subscribing to the Gardiner Expressway Rehabilitation, Section 2 Dufferin Street to Strachan Avenue, community update e-newsletter.

Project Overview:

The project will take place in three stages, focusing on two lanes at a time while keeping four lanes open.

- Stage 1 south two lanes
- Stage 2 middle two lanes (current stage)
- Stage 3 north two lanes

Key elements of the construction project include:

- Preparation work (completed).
- Installing temporary support systems to allow for the construction work to safely take place while keeping two-thirds of the Expressway open.
- Demolishing and reconstructing the elevated roadway.
- Removing and replacing the bridge deck and the large beams (girders) that support the road.
- Rehabilitating the concrete support columns (bents).
- Finishing works.

Overnight Lane Reductions:

From 11 p.m. to 5 a.m., nightly, between Sunday, March 2nd to Friday, March 7th, the eastbound Gardiner Expressway will be reduced to one lane between Dufferin Street and Strachan Avenue, to facilitate the installation of new girders (large beams that support the elevated roadway).

Roadway: Demolishing and reconstructing the elevated roadway.

Completed:

- Stage 2 bridge deck demolition.

What's happening:

- Stage 2 concrete placement for bridge deck from West Abutment to Bent 3 (approx. 220m to approx. 170m west of GO Station) is scheduled for night of Monday, March 3rd, 2025.
- Stage 2 concrete placement for bridge deck from Bent 3 to Bent 7 (approx. 170m to approx. 90m west of GO Station) is scheduled tentatively for night of Friday, March 7th, 2025.
- Stage 2 installation of bridge deck reinforcement will be ongoing from Bent 7 to Bent 9 (approx. 90m to approx. 55m east of GO station), progressing eastwards.

Location of work:

- Work is being done behind the green construction screen on the roadway and underneath the roadway.

Girders: Removing and replacing the large beams (girders) that support the road. This

Completed:

- Removal of girders in Stage 1 and 2 has been fully completed.
- Installation of girders in Stage 1 has been fully completed.
- Completed prefabrication of 494 precast girders produced till date.
- Stage 2 girder installation from West Abutment to Bent 29 (approx. 220m west to approx. 325m east of GO Station).
- Stage 2 Dufferin Street Bridge partial depth concrete removals at center median column and installation of dowels will be ongoing.

What's happening:

- Stage 2 Dufferin Street Bridge concrete placement for refacing at center median column north face is scheduled for Friday, February 28th, 2024.
- Stage 2 girder installation from Bent 29 to Bent 31 (approx. 325m to approx. 365m east of GO Station) scheduled for February 27th and February 28th, 2025. All girder installations will be occurring nightly from 11 p.m. to 5 a.m.
- Stage 2 girder installation from Bent 31 to Bent 35 (approx. 365m to approx. 450m east of GO Station) is scheduled for March 2nd to March 7th, 2025. All girder installations will be occurring nightly from 11 p.m. to 5 a.m.

Location of work:

- Work is being done behind the green construction screen on the roadway and underneath the roadway.
- Girders are being fabricated in a facility north of Toronto.

Bents: Rehabilitating the concrete support columns (bents)

Completed:

- Completed reconstruction of all bents in Stage 1.
- Stage 2 bent cap demolition and removal of steel girders has been completed.
- Stage 2 bridge deck bent cap and girder demolition completed no further full depth concrete removals in this stage.
- Stage 2 removal of steel girders completed.
- Stage 2 installation of temporary support at bent caps completed.
- Stage 2 bent cap concrete removals completed.
- Stage 2 scaffolding installation for bent cap construction completed.
- Stage 2 construction of new bent caps completed for all bents.

Location of work:

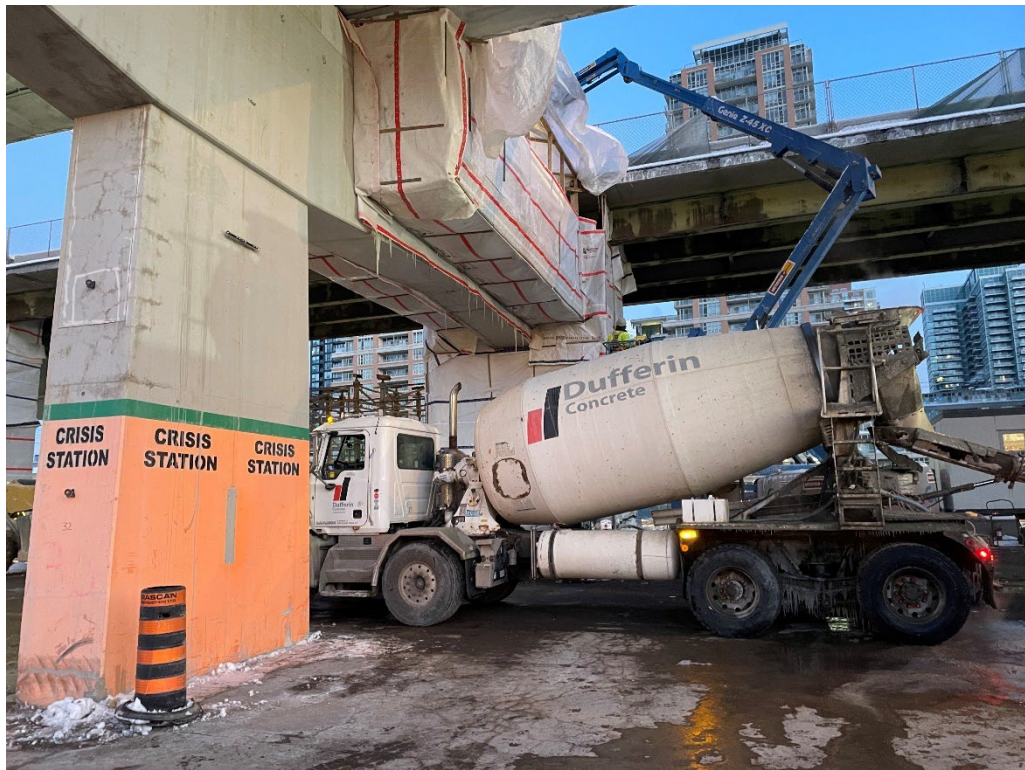
- Work is being done behind the green construction screen on the roadway and underneath the roadway.

For a visual map of the bent locations, visit the "Map of Work Area and Bent Location" tab on the [project website](#).

Visual Work on Site: The images below describe the type of work occurring on site during



New girders being installed.



A concrete truck pours concrete to resurface a bent cap.



Crews performing concrete removal work on a bent cap.

Thank you for your patience!

We appreciate your patience and understanding as we work towards a safer and more efficient Gardiner Expressway.

Please share this email

To ensure widespread awareness, please share this email with your neighbours and encourage them to sign up for updates to stay informed with the latest information.

For more information

If you have any questions or have any suggestions for what you would like to see in this community update, please contact the field ambassador for this project, Madeleine Eleuteri, at GardinerS2info@parsons.com or 437-996-4065.

Stay tuned for the next update!