

Construction Update: March 14, 2025

Gardiner Expressway Strategic Rehabilitation: Dufferin Street to Strachan Avenue | Community Update

Thank you for subscribing to the Gardiner Expressway Rehabilitation, Section 2 Dufferin Street to Strachan Avenue, community update e-newsletter.

Project Overview:

The project will take place in three stages, focusing on two lanes at a time while keeping four lanes open.

- Stage 1 south two lanes
- Stage 2 middle two lanes (current stage)
- Stage 3 north two lanes

Key elements of the construction project include:

- Preparation work (completed).
- Installing temporary support systems to allow for the construction work to safely take place while keeping two-thirds of the Expressway open.
- Demolishing and reconstructing the elevated roadway.
- Removing and replacing the bridge deck and the large beams (girders) that support the road.
- Rehabilitating the concrete support columns (bents).
- Finishing works.

Roadway: Demolishing and reconstructing the elevated roadway.

Completed:

- Stage 2 bridge deck demolition.
- Stage 2 concrete placement for bridge deck from Bent 3 to Bent 7 (approx. 170m to approx. 90m west of GO Station).

What's happening:

- Stage 2 concrete placement for bridge deck from Bent 7 to Bent 11 (approx. 90m to approx. 20m west of GO Station) is scheduled tentatively for this week.
- Stage 2 installation of bridge deck reinforcement will be ongoing from Bent 7 to Bent 12 (approx. 90m west of GO Station to GO station), progressing eastwards.
- Stage 2 Dufferin St. bridge fascia concrete repairs will be ongoing.

Location of work:

- Work is being done behind the green construction screen on the roadway and underneath the roadway.

Girders: Removing and replacing the large beams (girders) that support the road. This

Completed:

- Removal of girders in Stage 1 and 2 has been fully completed.
- Installation of girders in Stage 1 has been fully completed.
- Installation of girders in Stage 2 has been fully completed.
- Completed prefabrication of 504 precast girders produced till date (March 06, 2025).
- Stage 2 girder installation from West Abutment to Bent 29 (approx. 220m west to approx. 325m east of GO Station).
- Stage 2 Dufferin Street Bridge partial depth concrete removals at center median column and installation of dowels will be ongoing.

Location of work:

- Work is being done behind the green construction screen on the roadway and underneath the roadway.
- Girders are being fabricated in a facility north of Toronto.

Bents: Rehabilitating the concrete support columns (bents)

Completed:

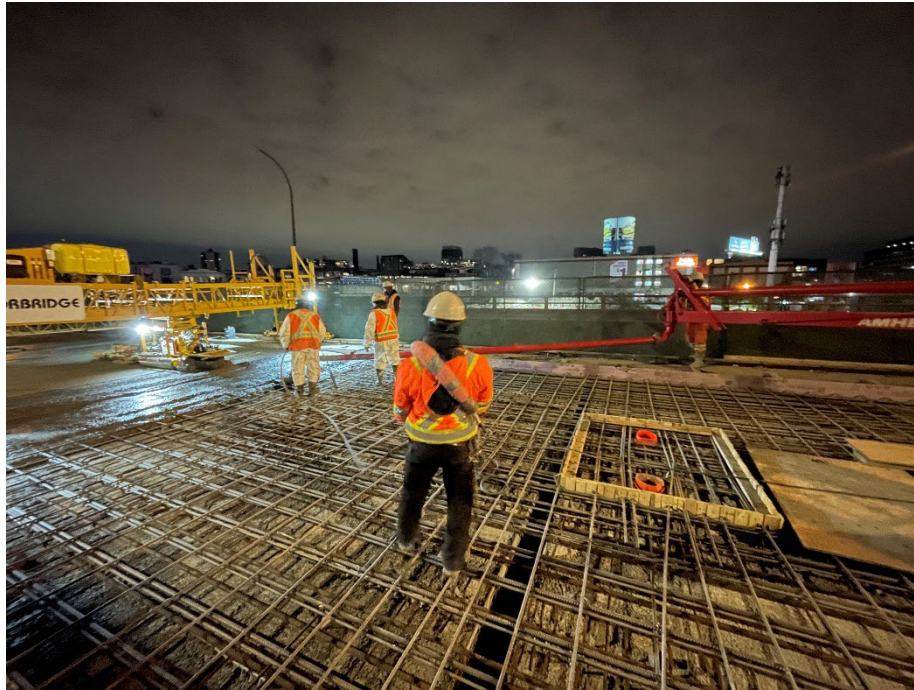
- Completed reconstruction of all bents in Stage 1.
- Stage 2 bent cap demolition and removal of steel girders has been completed.
- Stage 2 bridge deck bent cap and girder demolition completed no further full depth concrete removals in this stage.
- Stage 2 removal of steel girders completed.
- Stage 2 installation of temporary support at bent caps completed.
- Stage 2 bent cap concrete removals completed.
- Stage 2 scaffolding installation for bent cap construction completed.
- Stage 2 construction of new bent caps completed for all bents.

Location of work:

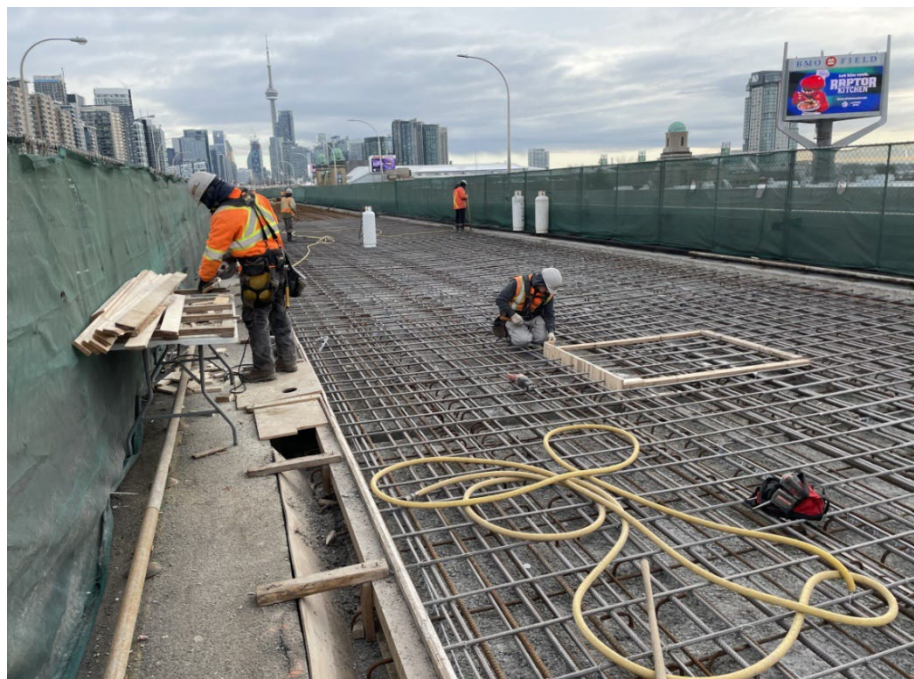
- Work is being done behind the green construction screen on the roadway and underneath the roadway.

For a visual map of the bent locations, visit the "Map of Work Area and Bent Location" tab on the [project website](#).

Visual Work on Site: The images below describe the type of work occurring on site during



Crews starting the second deck pour for spans 3 to 7 in Stage 2.



Preparing for concrete deck pour. Concrete deck was placed on 7 of 35 girder spans, from west abutment to Bent 11.



Stage 2 girder installation from Bent 33 to Bent 34 (approx. 405m to approx. 425m east of GO Station).

Thank you for your patience!

We appreciate your patience and understanding as we work towards a safer and more efficient Gardiner Expressway.

Please share this email

To ensure widespread awareness, please share this email with your neighbours and encourage them to sign up for updates to stay informed with the latest information.

For more information

If you have any questions or have any suggestions for what you would like to see in this community update, please contact the field ambassador for this project, Madeleine Eleuteri, at GardinerS2info@parsons.com or 437-996-4065.

Stay tuned for the next update!