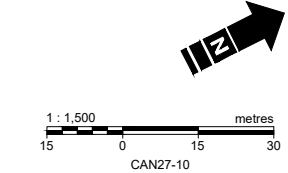
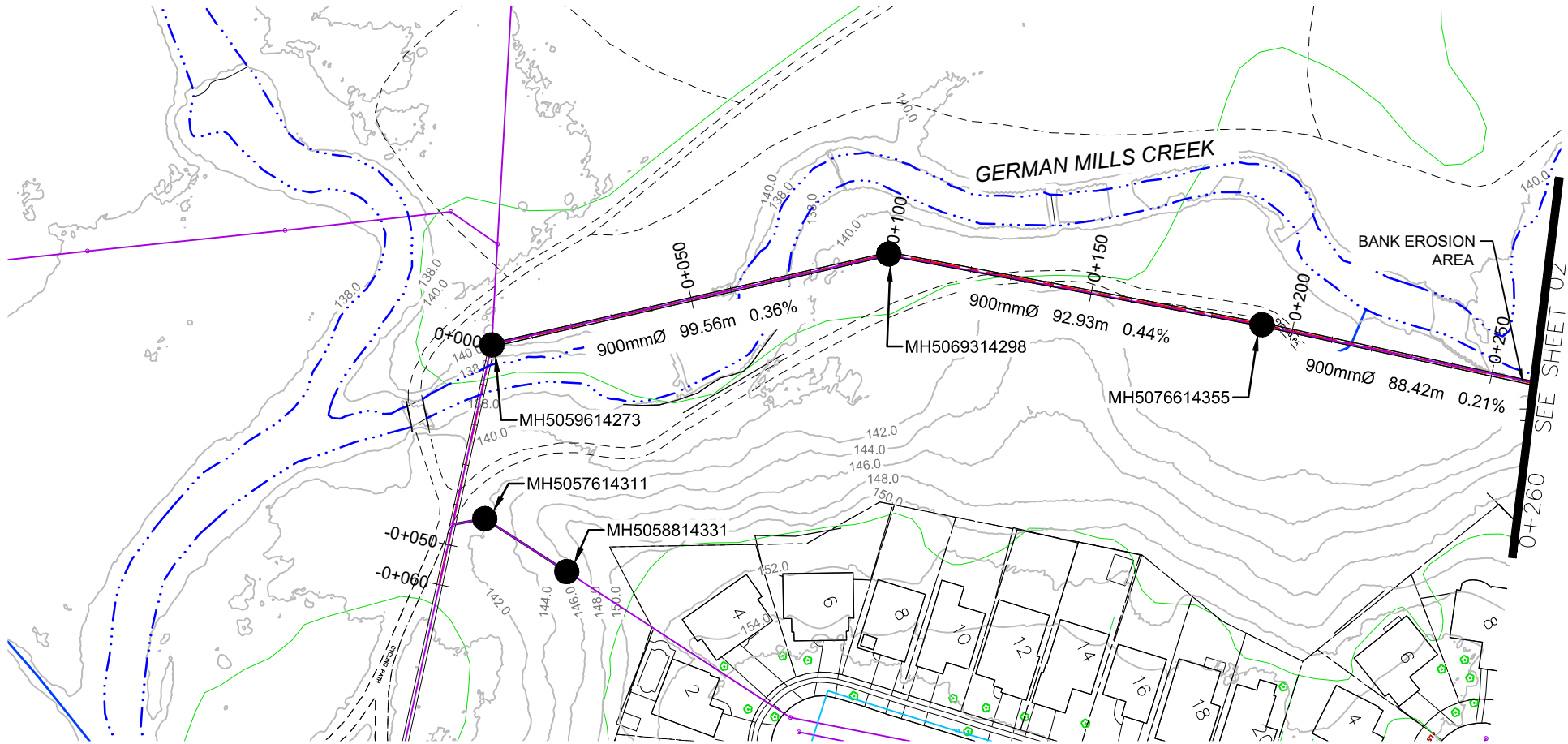


APPENDIX C7
Sanitary Trunk Sewer Three-dimensional
Model Drawings

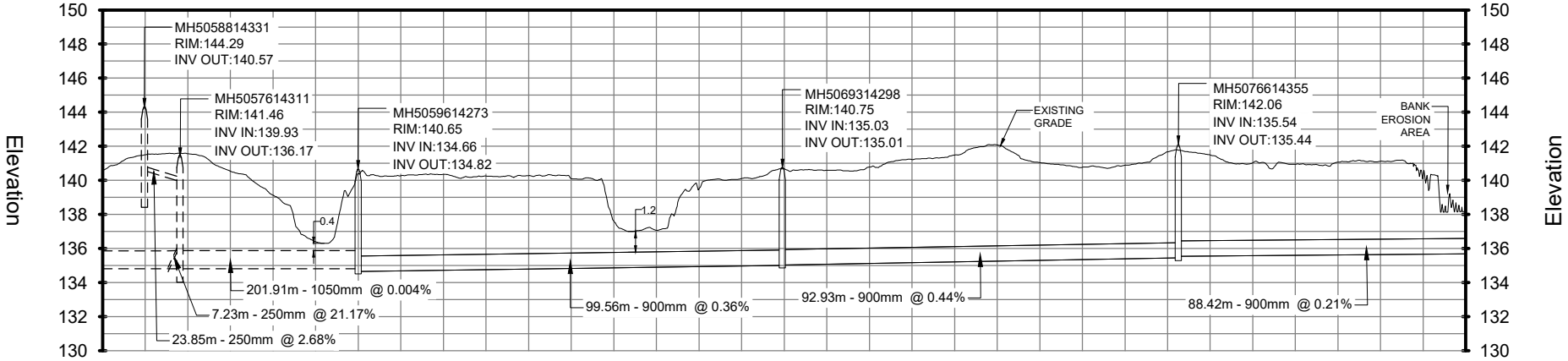
N:\PROJECTS\32227 - German Mills GSMP EA\GIS Analysis\Drawings\CD\EA\Production\Drawings\32227-Fig PP.dwg - Align 0+000 - 0+260 - Tuesday, December 7, 2021 7:52:38 PM - Kim Weiler

Plot 1 of 1 = Tabloid (L)



- LEGEND**
- LOT LINE
 - RIVER SHORELINE
 - TRAIL
 - VEGETATION
 - EXISTING CONTOUR (2m INTERVAL)
 - GRAVITY SEWER
 - WATERMAIN
 - ALIGNMENT
 - SANITARY SEWER
 - MANHOLE

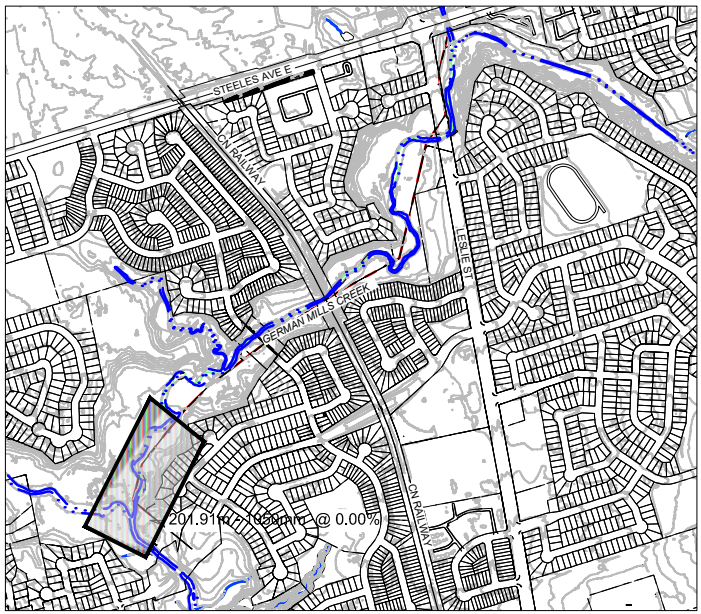
PLAN
SCALE 1:1500



Invert Elevations	134.81	134.64 136.17	134.82	134.66	135.01	135.03	135.44	135.54	135.73
Rim Elevations	144.29	141.46 140.57 139.93	140.65		140.75		142.06		
	0+050		0+000	0+050	0+100	0+150	0+200	0+250	0+260

PROFILE
HORIZONTAL SCALE 1:1500
VERTICAL SCALE 1:375

FOR REVIEW



KEY MAP
NOT TO SCALE

- REFERENCE:
- BASE MAP TOPOGRAPHY COMPILED FROM CITY OF TORONTO OPEN SOURCE DATA, TWAG SERVICING DATA AND DRF15170_TOPO2D.
 - MAPPED CREEK ALIGNMENT ON PLAN FROM 2018 ORTHOPHOTOGRAPHY DIGITIZED BY MATRIX SOLUTIONS.
 - TOPOGRAPHIC SURFACE BASED ON 2015 LIDAR DIGITAL ELEVATION MODEL (OPEN SOURCE) COMBINED WITH TOPOGRAPHIC AND CHANNEL PROFILE SURVEY BY MATRIX SOLUTIONS JULY TO SEPTEMBER 2021.
 - EXISTING SANITARY SEWER ALIGNMENT AND PROFILE BY WOOD ENVIRONMENTAL & INFRASTRUCTURE SOLUTIONS (S. PACKER, P.ENG.) FROM CIVIL 3D DRAWING FILE RECEIVED NOVEMBER 26, 2021, WITH REFERENCE TO SELECT SEWER AND MANHOLE SURVEYS COMPLETED BY MATRIX SOLUTIONS IN 2021.
 - COORDINATE SYSTEM ONTARIO MTM ZONE 10 NAD27.

MATRIX SOLUTIONS INC.
CERTIFICATE OF AUTHORIZATION
No.: 100187406
Professional Engineers Ontario

REVISION				
A	2021-12-01	ISSUED FOR REVIEW	SP	RP KW
No.	DATE	DESCRIPTION	BY	CHK. DRN.

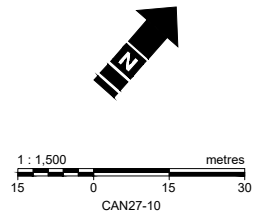
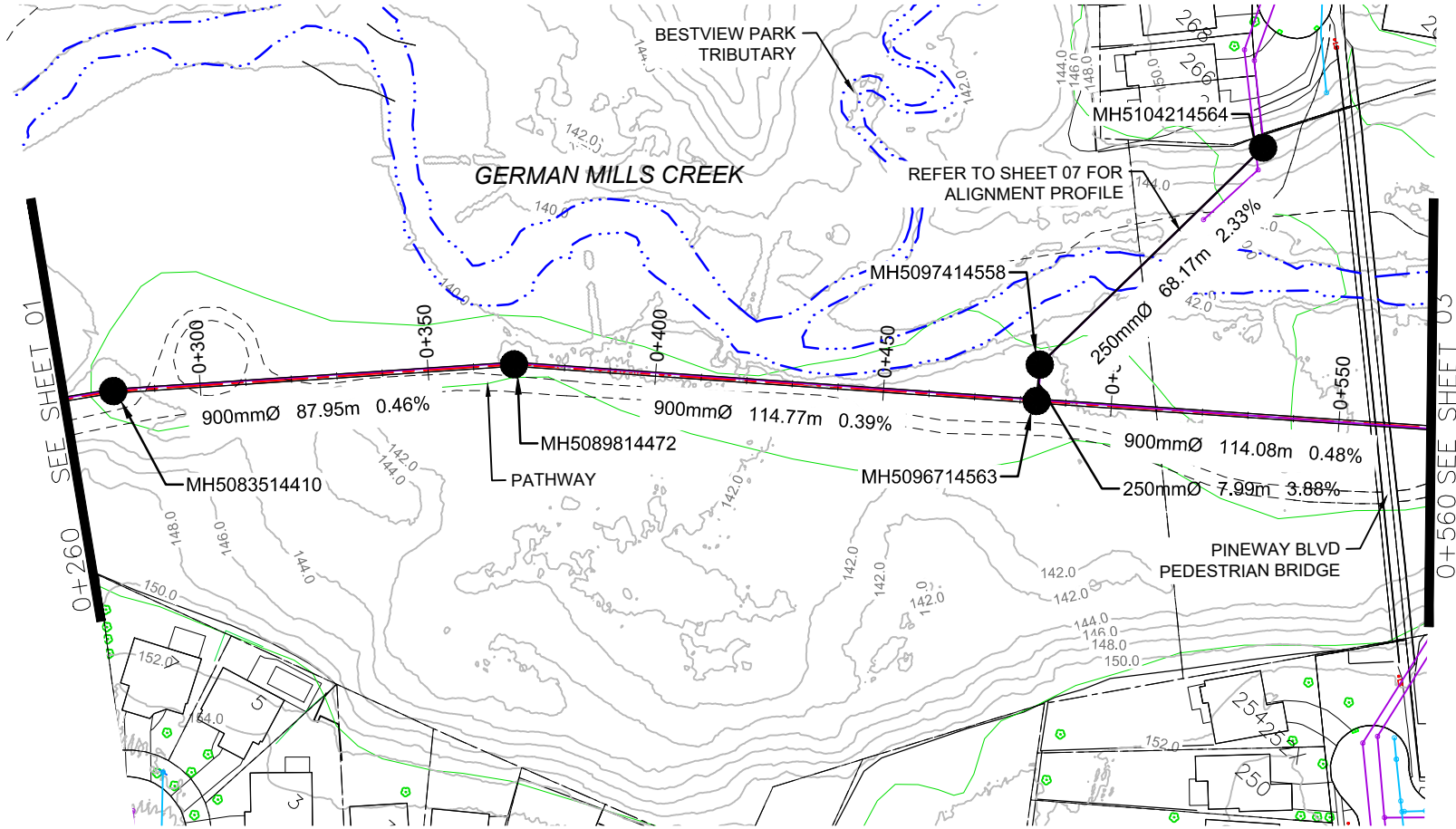


CITY OF TORONTO
GERMAN MILLS GSMP EA

PLAN / PROFILE
STA. -0+060 TO 0+260

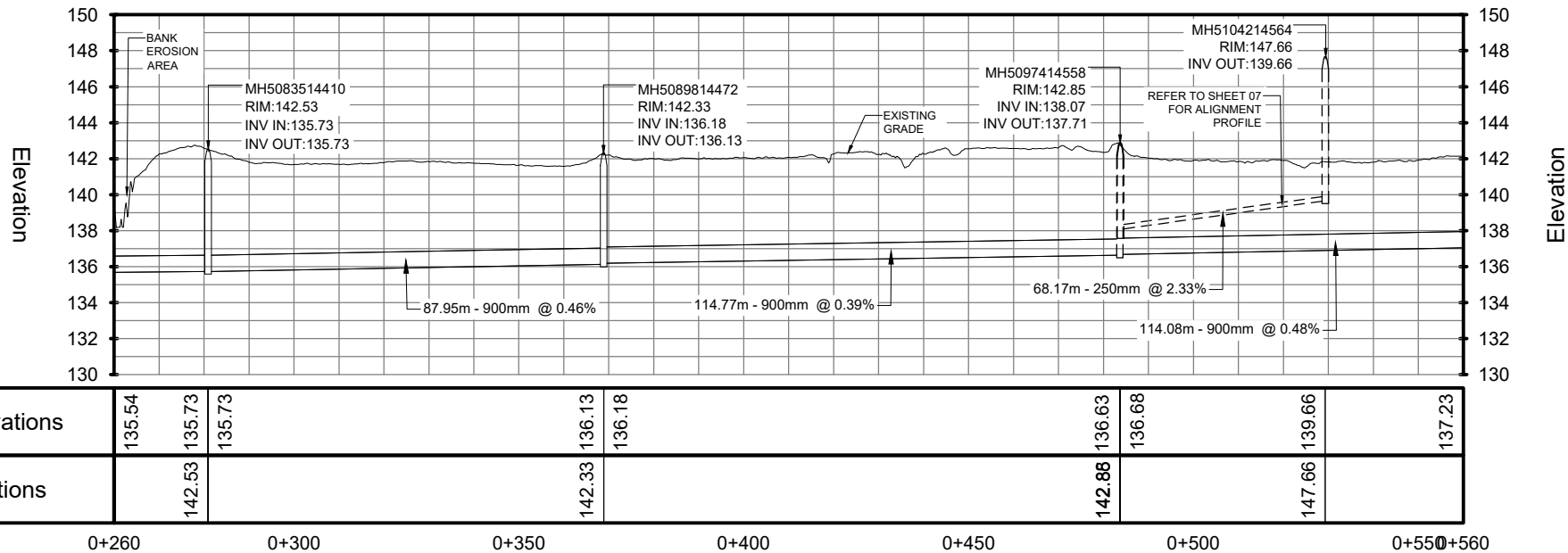
DATE: DECEMBER 2021	TECHNICAL: S. PACKER	REVIEWER: R. PHILLIPS	DRAWN: K. WEILER
PROJECT: 32227-522	REVISION: A	DRAWING: C7a	

Disclaimer: The information contained herein may be compiled from numerous third party materials that are subject to periodic change without prior notification. While every effort has been made by Matrix Solutions Inc. to ensure the accuracy of the information presented at the time of publication, Matrix Solutions Inc. assumes no liability for any errors, omissions, or inaccuracies in the third party material.



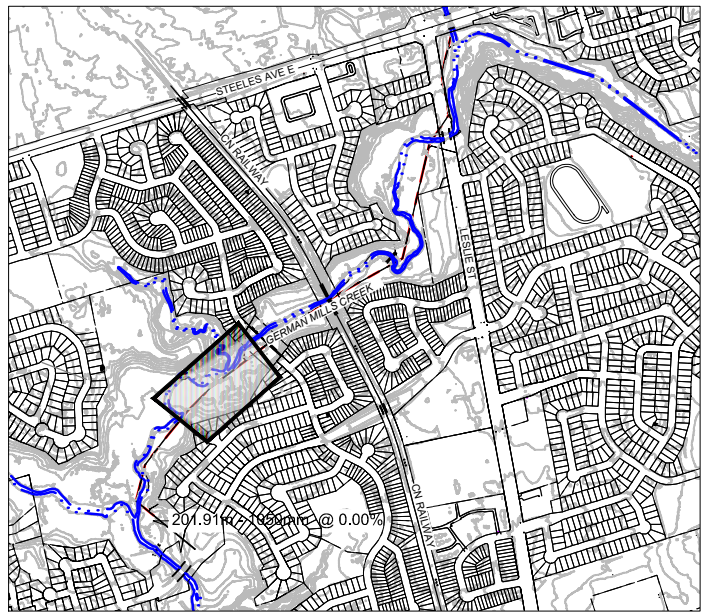
- LEGEND**
- LOT LINE
 - RIVER SHORELINE
 - TRAIL
 - VEGETATION
 - EXISTING CONTOUR (2m INTERVAL)
 - GRAVITY SEWER
 - WATERMAIN
 - ALIGNMENT
 - SANITARY SEWER
 - MANHOLE

PLAN
SCALE 1:1500



Invert Elevations	135.54	135.73	135.73	136.13	136.18	136.63	136.68	139.66	137.23
Rim Elevations		142.53		142.33		142.88		147.66	
	0+260		0+300	0+350	0+400	0+450	0+500		0+550+560

PROFILE
HORIZONTAL SCALE 1:1500
VERTICAL SCALE 1:375



KEY MAP
NOT TO SCALE

- REFERENCE:
- BASE MAP TOPOGRAPHY COMPILED FROM CITY OF TORONTO OPEN SOURCE DATA, TWAG SERVICING DATA AND DRF15170_TOPO2D.
 - MAPPED CREEK ALIGNMENT ON PLAN FROM 2018 ORTHOPHOTOGRAPHY DIGITIZED BY MATRIX SOLUTIONS.
 - TOPOGRAPHIC SURFACE BASED ON 2015 LIDAR DIGITAL ELEVATION MODEL (OPEN SOURCE) COMBINED WITH TOPOGRAPHIC AND CHANNEL PROFILE SURVEY BY MATRIX SOLUTIONS JULY TO SEPTEMBER 2021.
 - EXISTING SANITARY SEWER ALIGNMENT AND PROFILE BY WOOD ENVIRONMENTAL & INFRASTRUCTURE SOLUTIONS (S. PACKER, P.ENG.) FROM CIVIL 3D DRAWING FILE RECEIVED NOVEMBER 26, 2021, WITH REFERENCE TO SELECT SEWER AND MANHOLE SURVEYS COMPLETED BY MATRIX SOLUTIONS IN 2021.
 - COORDINATE SYSTEM ONTARIO MTM ZONE 10 NAD27.

MATRIX SOLUTIONS INC.
CERTIFICATE OF AUTHORIZATION
No.: 100187406
Professional Engineers Ontario

REVISION				
A	2021-12-01	ISSUED FOR REVIEW	SP	RP KW
No.	DATE	DESCRIPTION	BY	CHK. DRN.



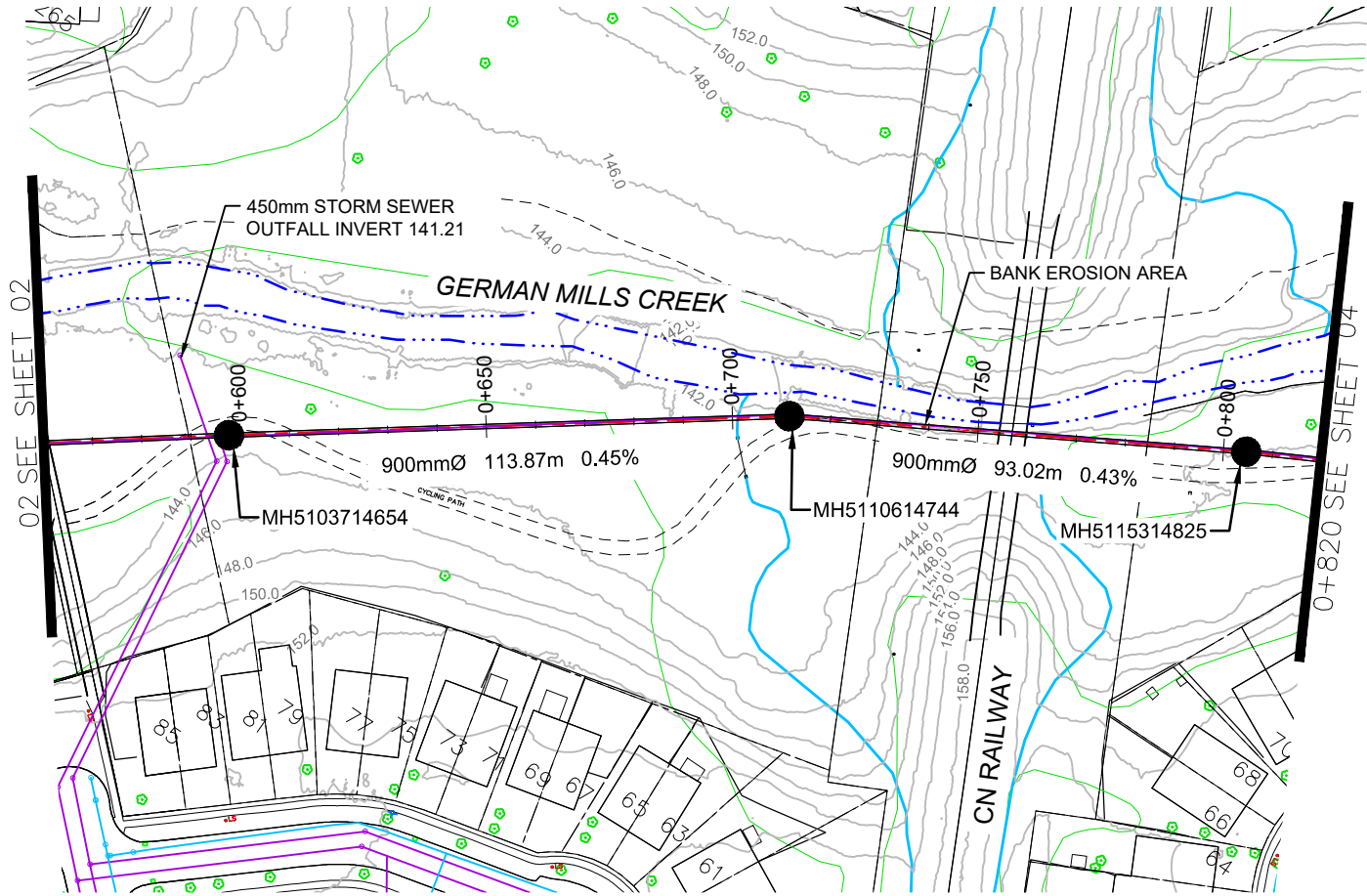
CITY OF TORONTO
GERMAN MILLS GSMP EA

PLAN / PROFILE
STA. 0+260 TO 0+560

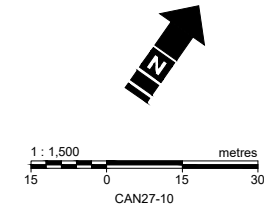
DATE: DECEMBER 2021	TECHNICAL: S. PACKER	REVIEWER: R. PHILLIPS	DRAWN: K. WEILER
PROJECT: 32227-522	REVISION: A	DRAWING: C7b	

Disclaimer: The information contained herein may be compiled from numerous third party materials that are subject to periodic change without prior notification. While every effort has been made by Matrix Solutions Inc. to ensure the accuracy of the information presented at the time of publication, Matrix Solutions Inc. assumes no liability for any errors, omissions, or inaccuracies in the third party material.

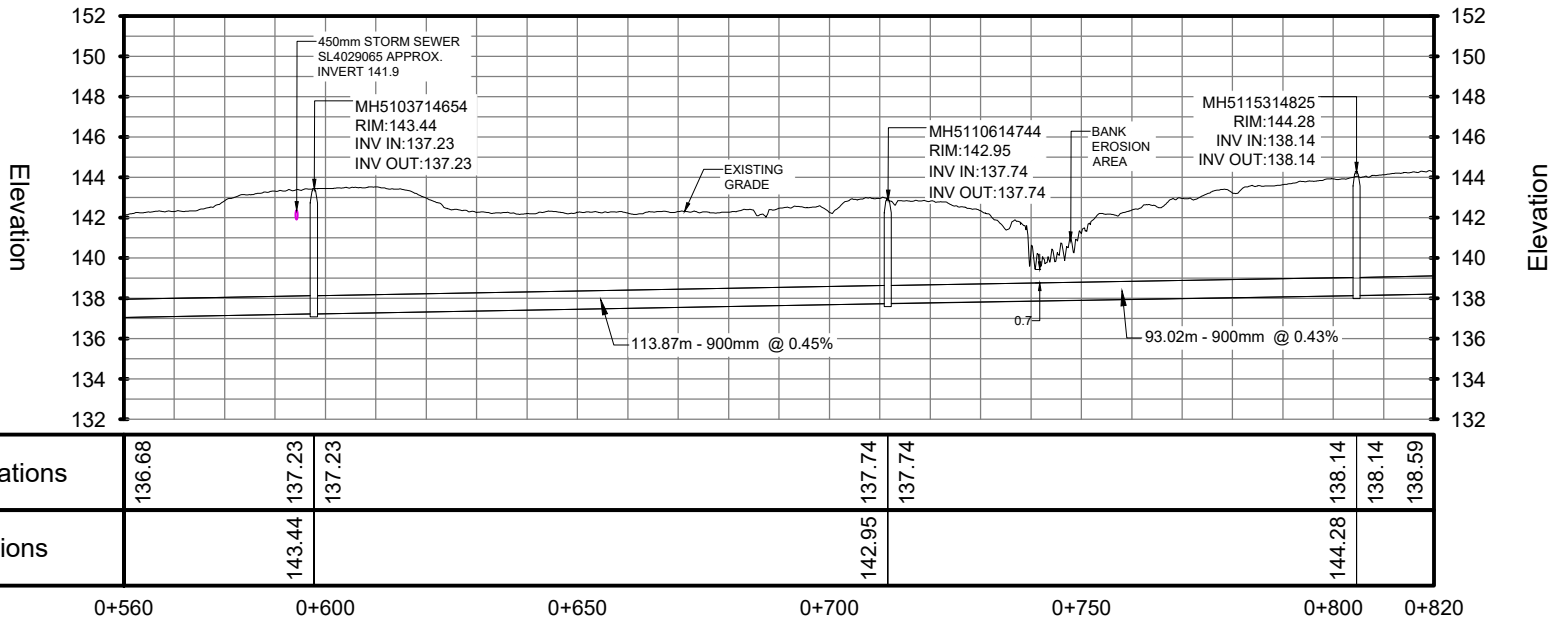
FOR REVIEW



PLAN
SCALE 1:1500

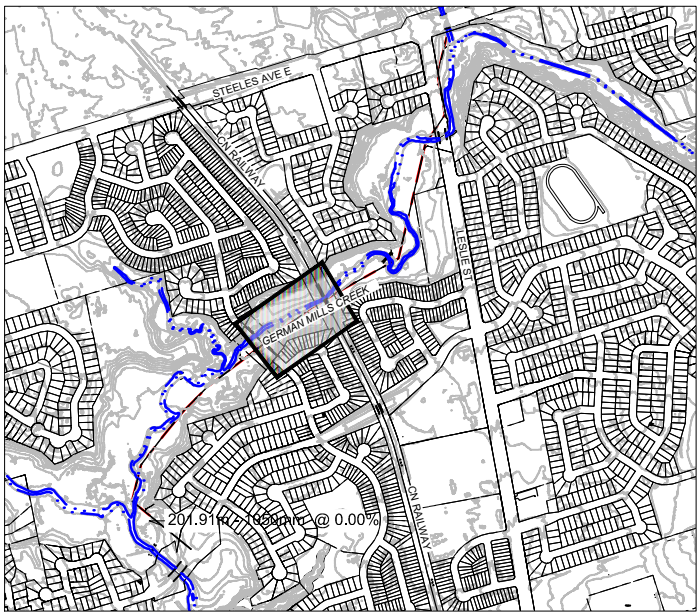


- LEGEND**
- LOT LINE
 - RIVER SHORELINE
 - TRAIL
 - VEGETATION
 - EXISTING CONTOURS (2m INTERVAL)
 - GRAVITY SEWER
 - WATERMAIN
 - ALIGNMENT
 - SANITARY SEWER
 - MANHOLE



Invert Elevations	136.68	137.23	137.23		137.74	137.74		138.14	138.14	138.59
Rim Elevations		143.44			142.95			144.28		

PROFILE
HORIZONTAL SCALE 1:1500
VERTICAL SCALE 1:375



KEY MAP
NOT TO SCALE

- REFERENCE:
- BASE MAP TOPOGRAPHY COMPILED FROM CITY OF TORONTO OPEN SOURCE DATA, TWAG SERVICING DATA AND DRF15170_TOPO2D.
 - MAPPED CREEK ALIGNMENT ON PLAN FROM 2018 ORTHOPHOTOGRAPHY DIGITIZED BY MATRIX SOLUTIONS.
 - TOPOGRAPHIC SURFACE BASED ON 2015 LIDAR DIGITAL ELEVATION MODEL (OPEN SOURCE) COMBINED WITH TOPOGRAPHIC AND CHANNEL PROFILE SURVEY BY MATRIX SOLUTIONS JULY TO SEPTEMBER 2021.
 - EXISTING SANITARY SEWER ALIGNMENT AND PROFILE BY WOOD ENVIRONMENTAL & INFRASTRUCTURE SOLUTIONS (S. PACKER, P.ENG.) FROM CIVIL 3D DRAWING FILE RECEIVED NOVEMBER 26, 2021, WITH REFERENCE TO SELECT SEWER AND MANHOLE SURVEYS COMPLETED BY MATRIX SOLUTIONS IN 2021.
 - COORDINATE SYSTEM ONTARIO MTM ZONE 10 NAD27.

MATRIX SOLUTIONS INC.
CERTIFICATE OF AUTHORIZATION
No.: 100187406
Professional Engineers Ontario

REVISION					
A	2021-12-01	ISSUED FOR REVIEW	SP	RP	KW
No.	DATE	DESCRIPTION	BY	CHK.	DRN.



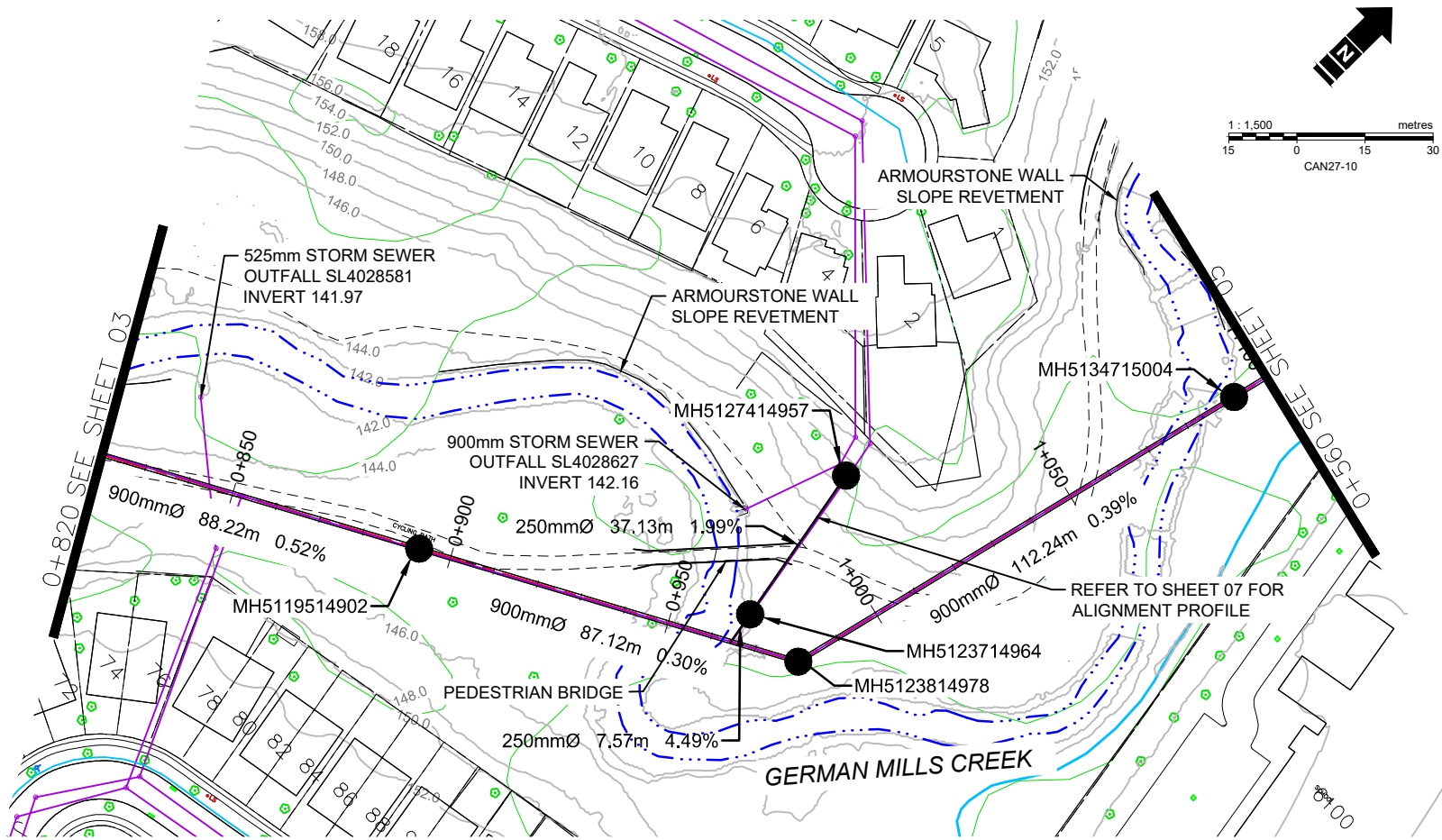
CITY OF TORONTO
GERMAN MILLS GSMP EA

PLAN / PROFILE
STA. 0+560 TO 0+820

DATE: DECEMBER 2021	TECHNICAL: S. PACKER	REVIEWER: R. PHILLIPS	DRAWN: K. WEILER
PROJECT: 32227-522	REVISION: A	DRAWING: C7c	

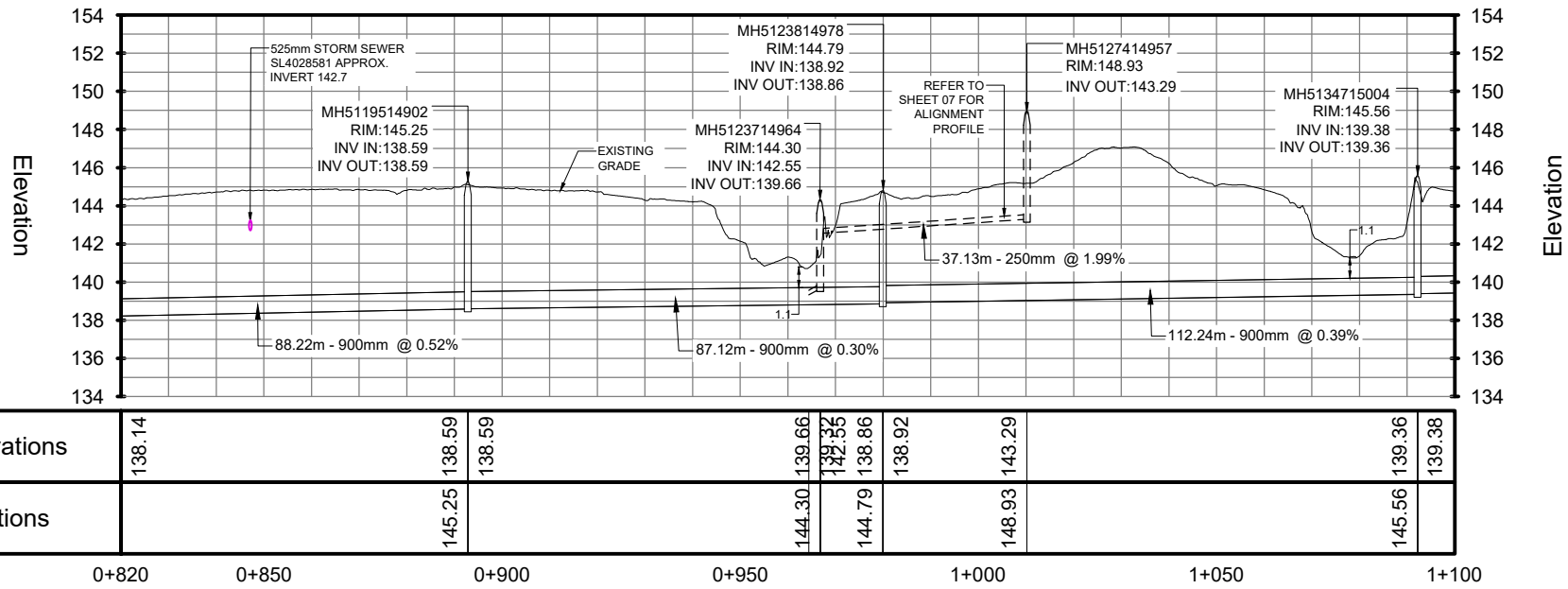
Disclaimer: The information contained herein may be compiled from numerous third party materials that are subject to periodic change without prior notification. While every effort has been made by Matrix Solutions Inc. to ensure the accuracy of the information presented at the time of publication, Matrix Solutions Inc. assumes no liability for any errors, omissions, or inaccuracies in the third party material.

FOR REVIEW



PLAN
SCALE 1:1500

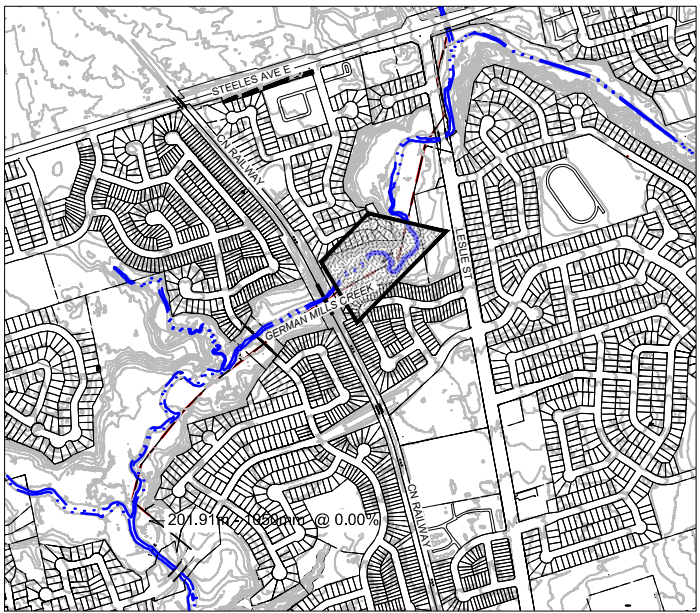
- LEGEND**
- LOT LINE
 - RIVER SHORELINE
 - TRAIL
 - VEGETATION
 - EXISTING CONTOUR (2m INTERVAL)
 - GRAVITY SEWER
 - WATERMAIN
 - ALIGNMENT
 - SANITARY SEWER
 - MANHOLE



Invert Elevations	138.14		138.59	138.59		139.66	139.35	138.86	138.92		143.29		139.36	139.38
Rim Elevations		145.25				144.30	144.79				148.93		145.56	
	0+820	0+850	0+900			0+950	1+000			1+050			1+100	

PROFILE
HORIZONTAL SCALE 1:1500
VERTICAL SCALE 1:375

FOR REVIEW



KEY MAP
NOT TO SCALE

- REFERENCE:
- BASE MAP TOPOGRAPHY COMPILED FROM CITY OF TORONTO OPEN SOURCE DATA, TWAG SERVICING DATA AND DR15170_TOPO2D.
 - MAPPED CREEK ALIGNMENT ON PLAN FROM 2018 ORTHOPHOTOGRAPHY DIGITIZED BY MATRIX SOLUTIONS.
 - TOPOGRAPHIC SURFACE BASED ON 2015 LIDAR DIGITAL ELEVATION MODEL (OPEN SOURCE) COMBINED WITH TOPOGRAPHIC AND CHANNEL PROFILE SURVEY BY MATRIX SOLUTIONS JULY TO SEPTEMBER 2021.
 - EXISTING SANITARY SEWER ALIGNMENT AND PROFILE BY WOOD ENVIRONMENTAL & INFRASTRUCTURE SOLUTIONS (S. PACKER, P.ENG.) FROM CIVIL 3D DRAWING FILE RECEIVED NOVEMBER 26, 2021, WITH REFERENCE TO SELECT SEWER AND MANHOLE SURVEYS COMPLETED BY MATRIX SOLUTIONS IN 2021.
 - COORDINATE SYSTEM ONTARIO MTM ZONE 10 NAD27.

MATRIX SOLUTIONS INC.
CERTIFICATE OF AUTHORIZATION
No.: 100187406
Professional Engineers Ontario

REVISION				
A	2021-12-01	ISSUED FOR REVIEW	SP	RP KW
No.	DATE	DESCRIPTION	BY	CHK. DRN.

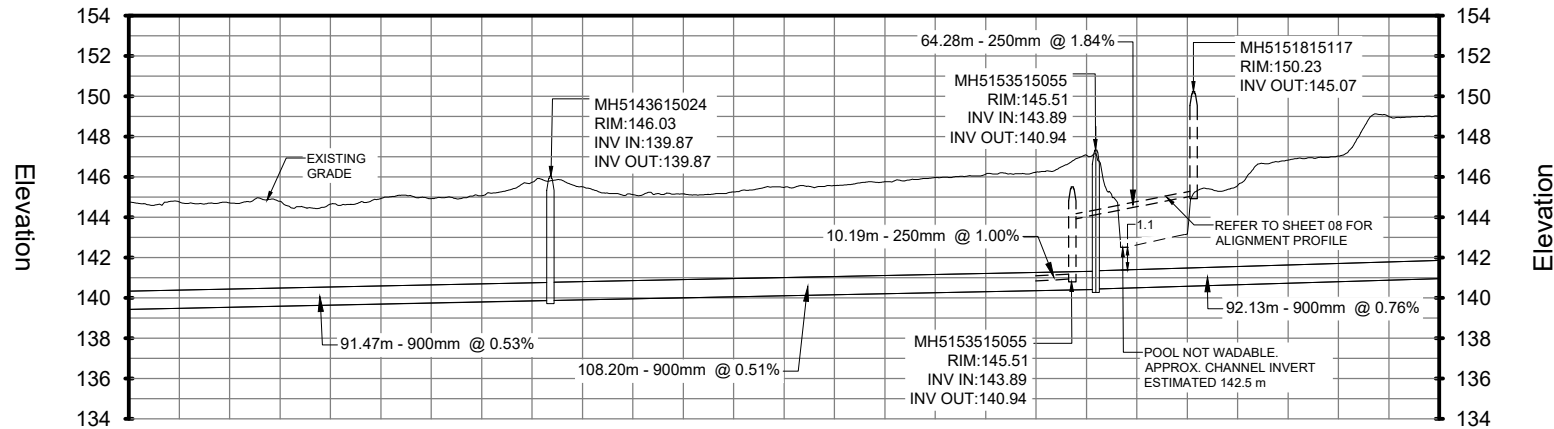
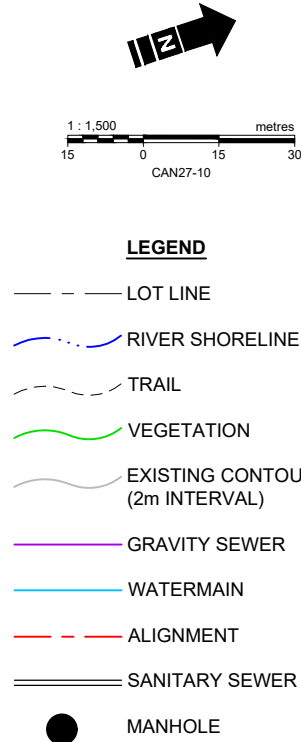
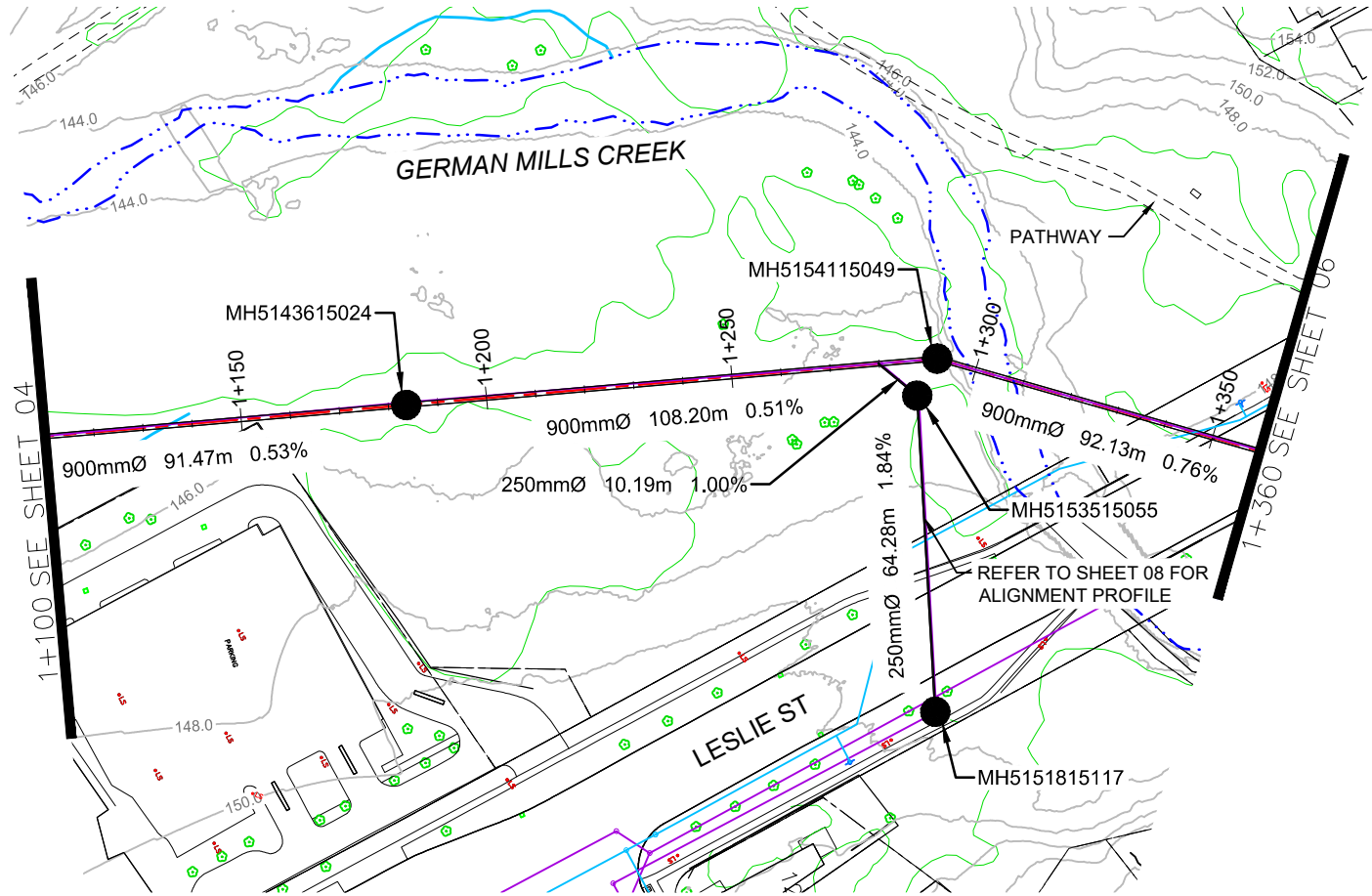


CITY OF TORONTO
GERMAN MILLS GSMP EA

PLAN / PROFILE
STA. 0+820 TO 1+100

DATE: DECEMBER 2021	TECHNICAL: S. PACKER	REVIEWER: R. PHILLIPS	DRAWN: K. WEILER
PROJECT: 32227-522	REVISION: A	DRAWING: C7d	

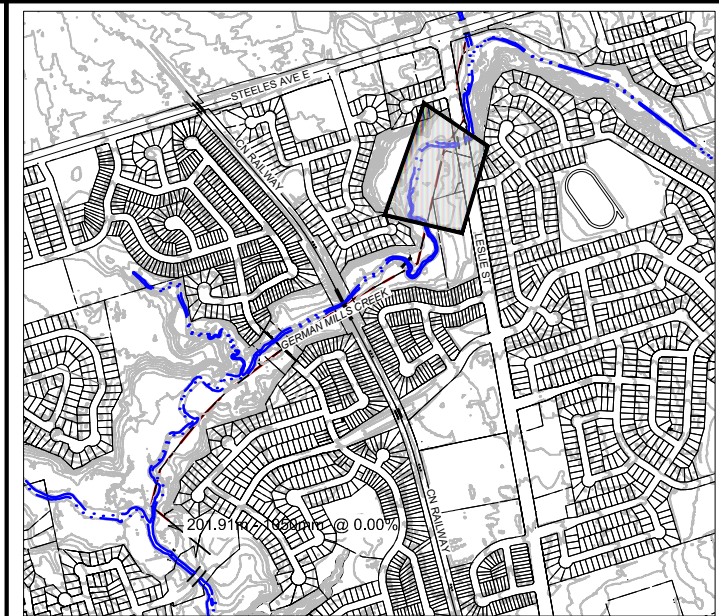
Disclaimer: The information contained herein may be compiled from numerous third party materials that are subject to periodic change without prior notification. While every effort has been made by Matrix Solutions Inc. to ensure the accuracy of the information presented at the time of publication, Matrix Solutions Inc. assumes no liability for any errors, omissions, or inaccuracies in the third party material.



Invert Elevations	139.38		139.87	139.87	140.84	140.42	140.44	143.89	141.14
Rim Elevations			146.03			145.51	150.23	145.07	

PROFILE
HORIZONTAL SCALE 1:1500
VERTICAL SCALE 1:375

FOR REVIEW



- REFERENCE:
- BASE MAP TOPOGRAPHY COMPILED FROM CITY OF TORONTO OPEN SOURCE DATA, TWAG SERVICING DATA AND DRF15170_TOPO2D.
 - MAPPED CREEK ALIGNMENT ON PLAN FROM 2018 ORTHOPHOTOGRAPHY DIGITIZED BY MATRIX SOLUTIONS.
 - TOPOGRAPHIC SURFACE BASED ON 2015 LIDAR DIGITAL ELEVATION MODEL (OPEN SOURCE) COMBINED WITH TOPOGRAPHIC AND CHANNEL PROFILE SURVEY BY MATRIX SOLUTIONS JULY TO SEPTEMBER 2021.
 - EXISTING SANITARY SEWER ALIGNMENT AND PROFILE BY WOOD ENVIRONMENTAL & INFRASTRUCTURE SOLUTIONS (S. PACKER, P.ENG.) FROM CIVIL 3D DRAWING FILE RECEIVED NOVEMBER 26, 2021, WITH REFERENCE TO SELECT SEWER AND MANHOLE SURVEYS COMPLETED BY MATRIX SOLUTIONS IN 2021.
 - COORDINATE SYSTEM ONTARIO MTM ZONE 10 NAD27.

MATRIX SOLUTIONS INC.
CERTIFICATE OF AUTHORIZATION
No.: 100187406
Professional Engineers Ontario

REVISION					
A	2021-12-01	ISSUED FOR REVIEW	SP	RP	KW
No.	DATE	DESCRIPTION	BY	CHK.	DRN.

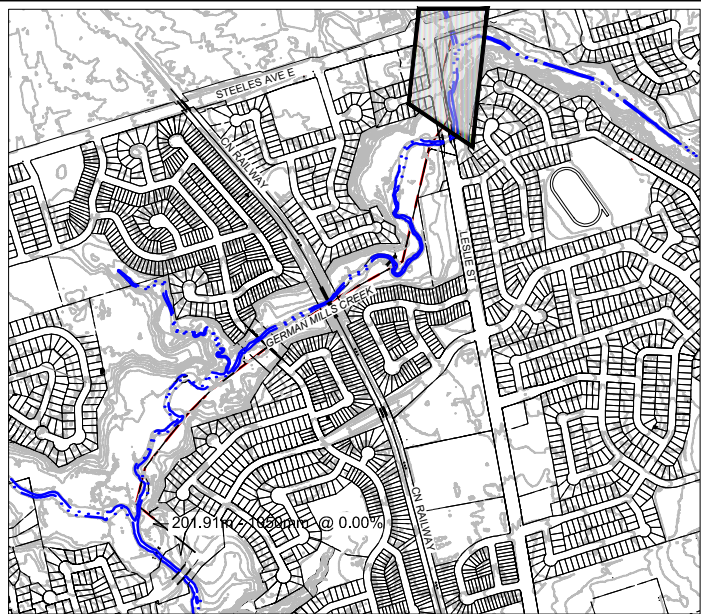
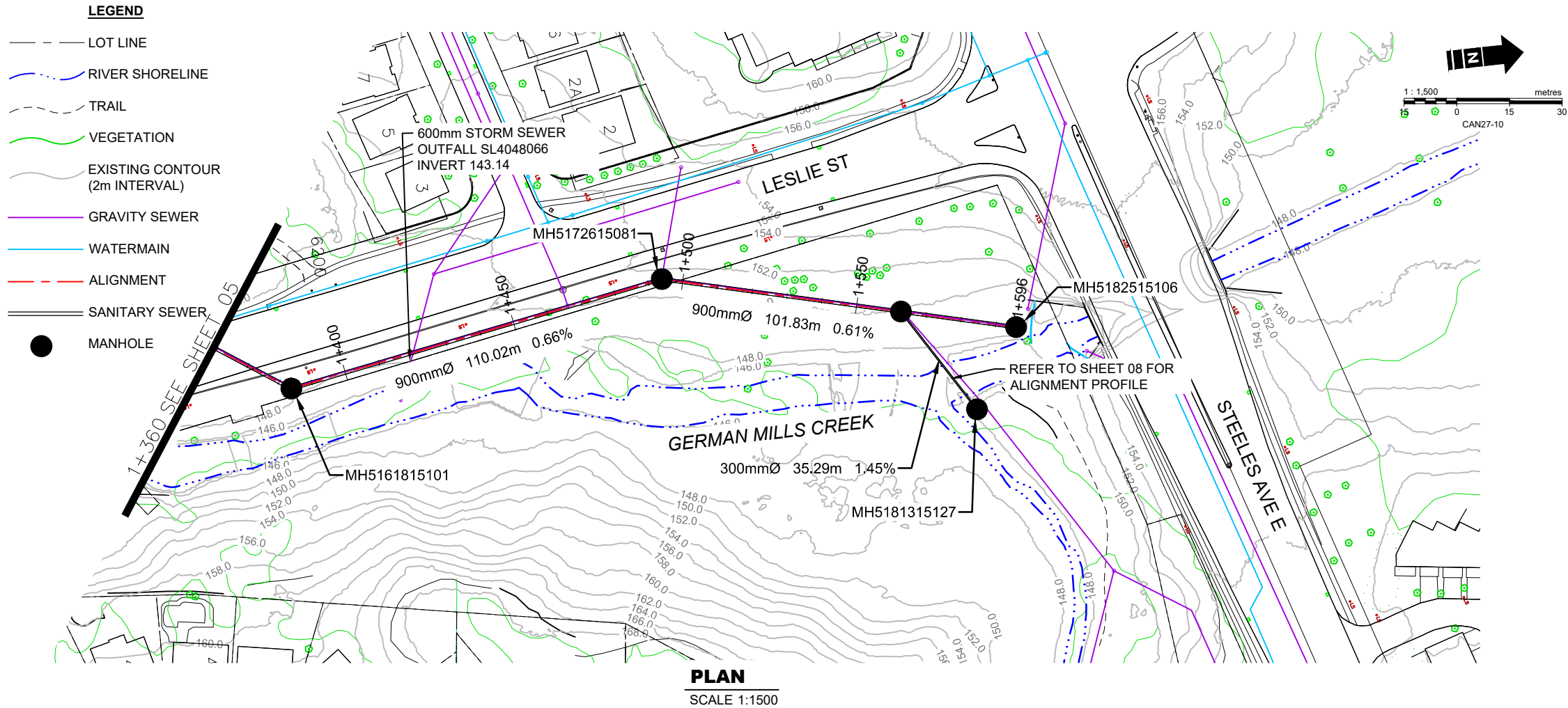


CITY OF TORONTO
GERMAN MILLS GSMP EA

PLAN / PROFILE
STA. 1+100 TO 1+360

DATE: DECEMBER 2021	TECHNICAL: S. PACKER	REVIEWER: R. PHILLIPS	DRAWN: K. WEILER
PROJECT: 32227-522	REVISION: A	DRAWING: C7e	

Disclaimer: The information contained herein may be compiled from numerous third party materials that are subject to periodic change without prior notification. While every effort has been made by Matrix Solutions Inc. to ensure the accuracy of the information presented at the time of publication, Matrix Solutions Inc. assumes no liability for any errors, omissions, or inaccuracies in the third party material.



KEY MAP
NOT TO SCALE

- REFERENCE:
1. BASE MAP TOPOGRAPHY COMPILED FROM CITY OF TORONTO OPEN SOURCE DATA, TWAG SERVICING DATA AND DRF15170, TOPO2D.
 2. MAPPED CREEK ALIGNMENT ON PLAN FROM 2018 ORTHOPHOTOGRAPHY DIGITIZED BY MATRIX SOLUTIONS.
 3. TOPOGRAPHIC SURFACE BASED ON 2015 LIDAR DIGITAL ELEVATION MODEL (OPEN SOURCE) COMBINED WITH TOPOGRAPHIC AND CHANNEL PROFILE SURVEY BY MATRIX SOLUTIONS JULY TO SEPTEMBER 2021.
 4. EXISTING SANITARY SEWER ALIGNMENT AND PROFILE BY WOOD ENVIRONMENTAL & INFRASTRUCTURE SOLUTIONS (S. PACKER, P.ENG.) FROM CIVIL 3D DRAWING FILE RECEIVED NOVEMBER 26, 2021, WITH REFERENCE TO SELECT SEWER AND MANHOLE SURVEYS COMPLETED BY MATRIX SOLUTIONS IN 2021.
 5. COORDINATE SYSTEM ONTARIO MTM ZONE 10 NAD27.

MATRIX SOLUTIONS INC.
CERTIFICATE OF AUTHORIZATION
No.: 100187406
Professional Engineers Ontario

REVISION

No.	DATE	DESCRIPTION	BY	CHK.	DRN.
A	2021-12-01	ISSUED FOR REVIEW	SP	RP	KW

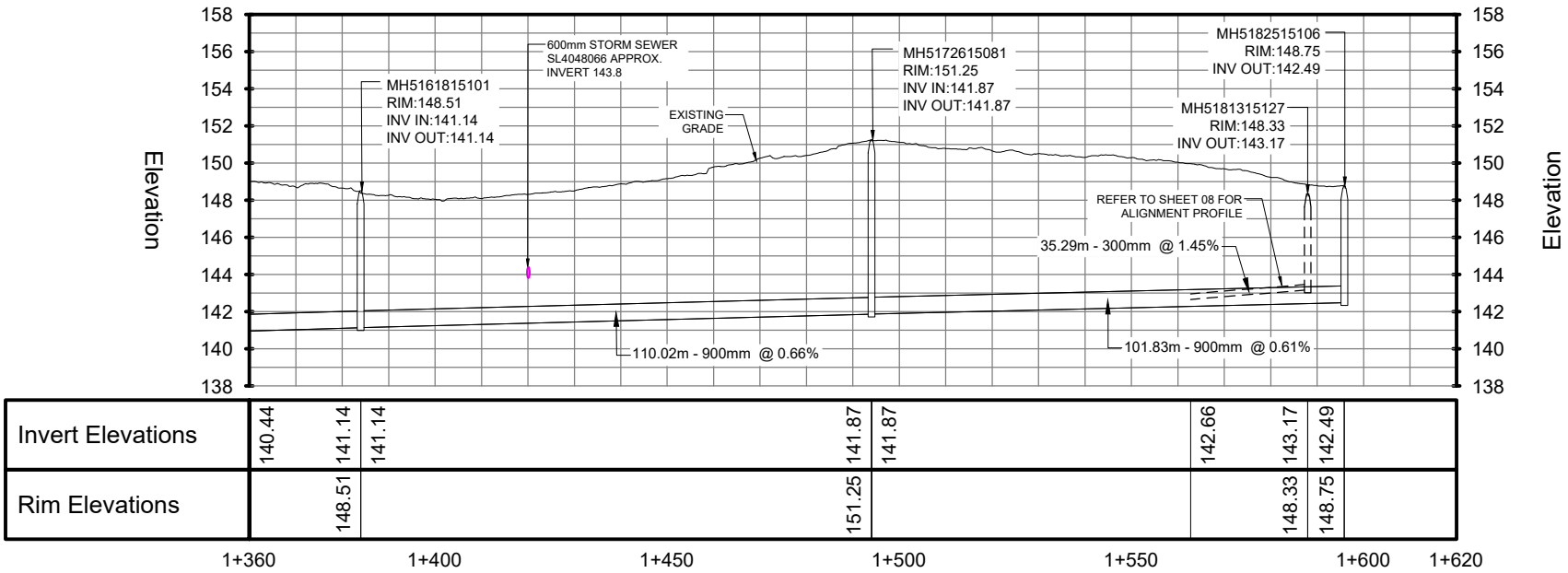


CITY OF TORONTO
GERMAN MILLS GSMP EA

PLAN / PROFILE
STA. 1+360 TO 1+620

DATE: DECEMBER 2021	TECHNICAL: S. PACKER	REVIEWER: R. PHILLIPS	DRAWN: K. WEILER
PROJECT: 32227-522	REVISION: A	DRAWING: C7f	

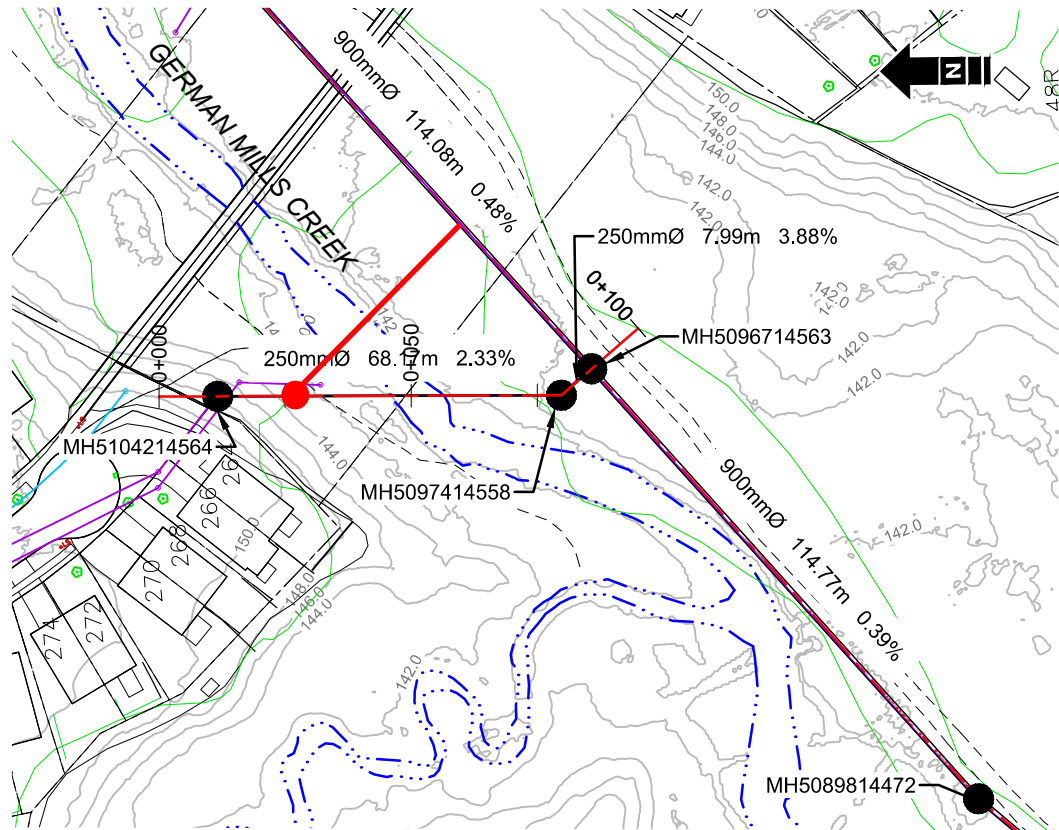
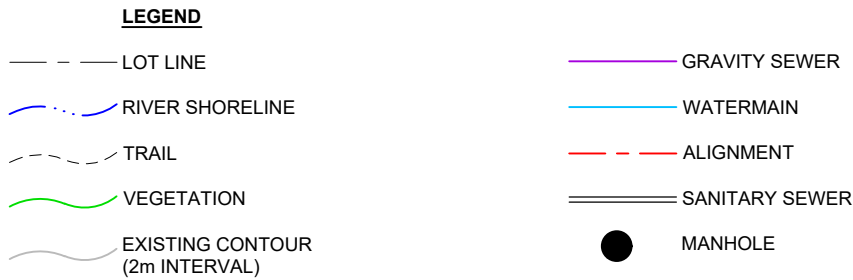
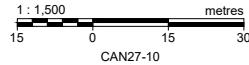
Disclaimer: The information contained herein may be compiled from numerous third party materials that are subject to periodic change without prior notification. While every effort has been made by Matrix Solutions Inc. to ensure the accuracy of the information presented at the time of publication, Matrix Solutions Inc. assumes no liability for any errors, omissions, or inaccuracies in the third party material.



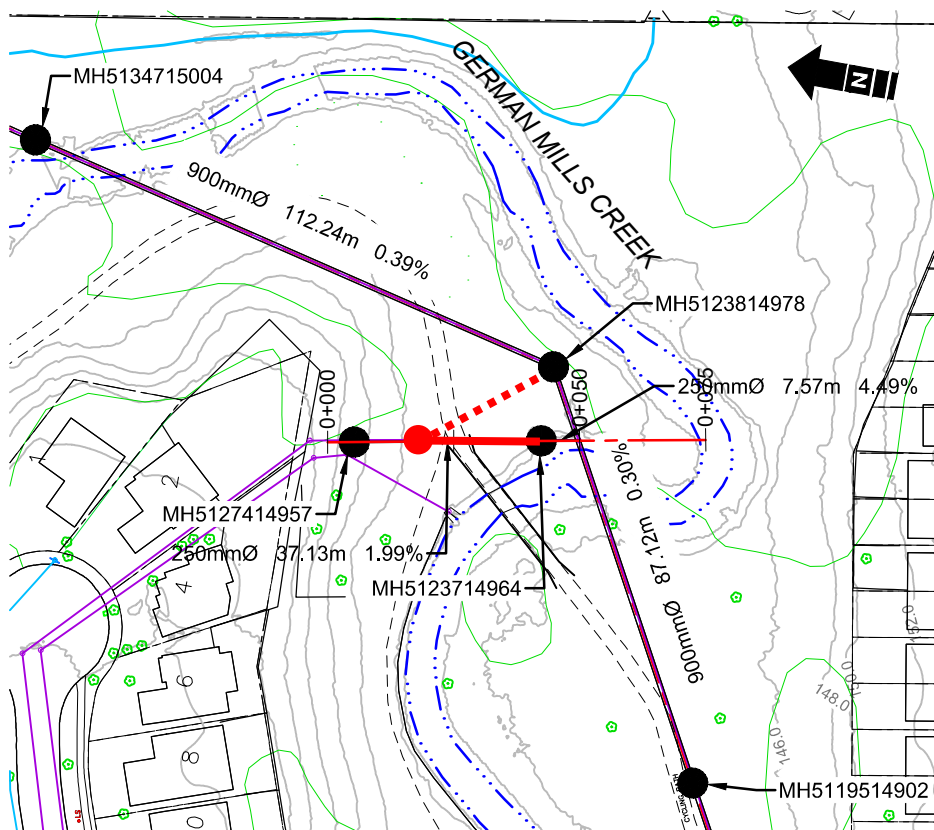
PROFILE
HORIZONTAL SCALE 1:1500
VERTICAL SCALE 1:375

FOR REVIEW

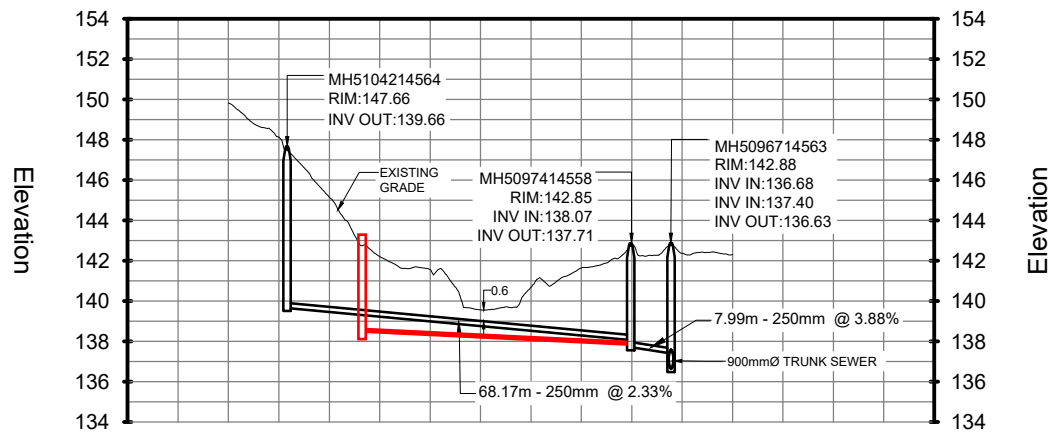
FOR REVIEW



PLAN - LATERAL 1
SCALE 1:1500

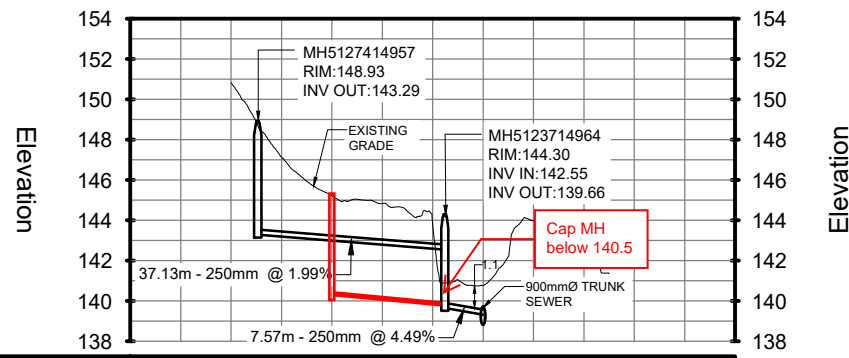


PLAN - LATERAL 2
SCALE 1:1500



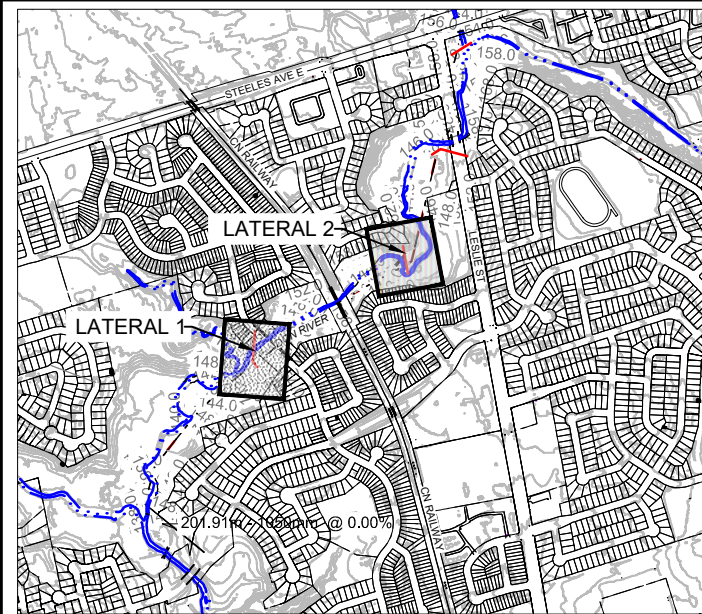
Invert Elevations		139.66	138.07	137.71 137.40	
Rim Elevations	147.66		142.85 142.88		

PROFILE - LATERAL 1
HORIZONTAL SCALE 1:1500
VERTICAL SCALE 1:375



Invert Elevations		143.29	142.55 139.32	
Rim Elevations	148.93		144.30	

PROFILE - LATERAL 2
HORIZONTAL SCALE 1:1500
VERTICAL SCALE 1:375



KEY MAP
NOT TO SCALE

- REFERENCE:
1. BASE MAP TOPOGRAPHY COMPILED FROM CITY OF TORONTO OPEN SOURCE DATA, TWAG SERVICING DATA AND DR15170_TOPO2D.
 2. MAPPED CREEK ALIGNMENT ON PLAN FROM 2018 ORTHOPHOTOGRAPHY DIGITIZED BY MATRIX SOLUTIONS.
 3. TOPOGRAPHIC SURFACE BASED ON 2015 LIDAR DIGITAL ELEVATION MODEL (OPEN SOURCE) COMBINED WITH TOPOGRAPHIC AND CHANNEL PROFILE SURVEY BY MATRIX SOLUTIONS JULY TO SEPTEMBER 2021.
 4. EXISTING SANITARY SEWER ALIGNMENT AND PROFILE BY WOOD ENVIRONMENTAL & INFRASTRUCTURE SOLUTIONS (S. PACKER, P.ENG.) FROM CIVIL 3D DRAWING FILE RECEIVED NOVEMBER 26, 2021, WITH REFERENCE TO SELECT SEWER AND MANHOLE SURVEYS COMPLETED BY MATRIX SOLUTIONS IN 2021.
 5. COORDINATE SYSTEM ONTARIO MTM ZONE 10 NAD27.

MATRIX SOLUTIONS INC.
CERTIFICATE OF AUTHORIZATION
No.: 100187406
Professional Engineers Ontario

REVISION					
A	2021-12-01	ISSUED FOR REVIEW	SP	RP	KW
No.	DATE	DESCRIPTION	BY	CHK.	DRN.



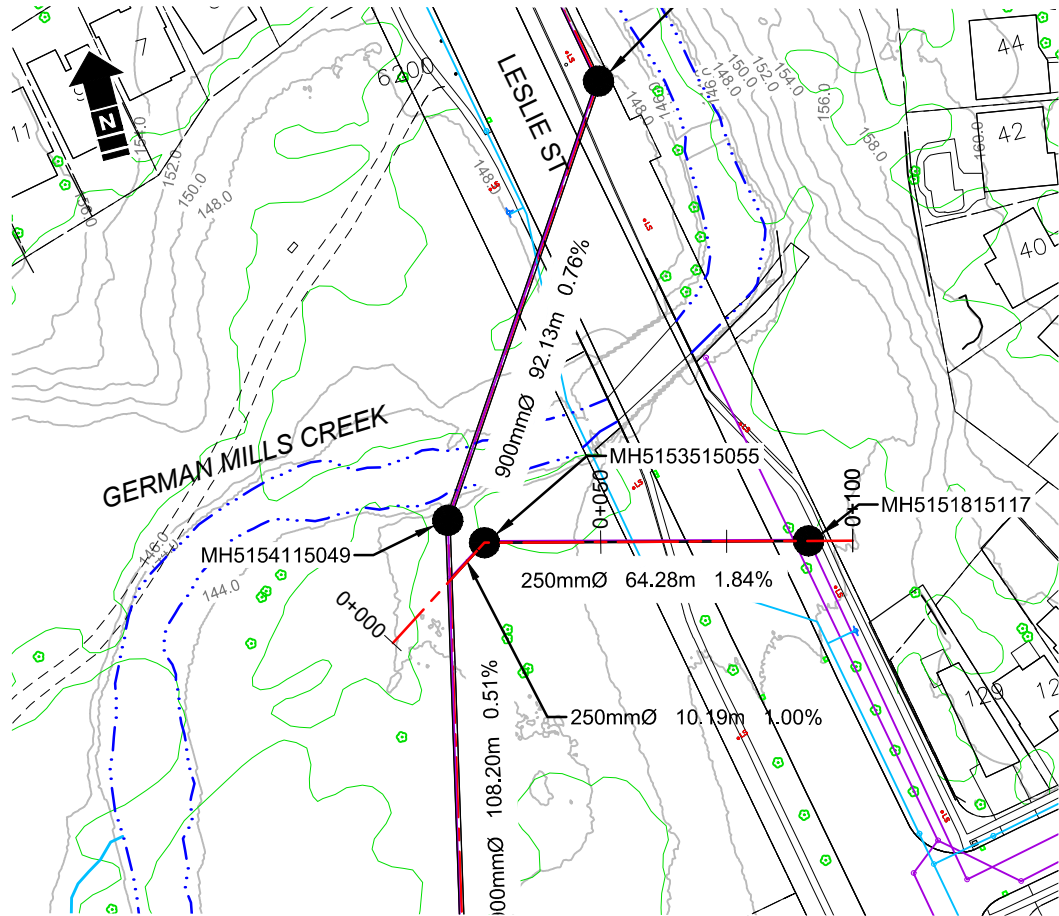
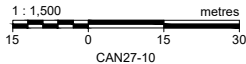
CITY OF TORONTO
GERMAN MILLS GSMP EA

**PLAN / PROFILE
LATERALS 1 & 2**

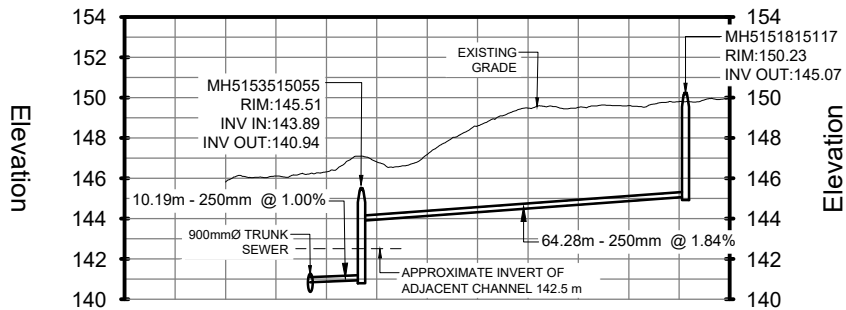
DATE: DECEMBER 2021	TECHNICAL: S. PACKER	REVIEWER: R. PHILLIPS	DRAWN: K. WEILER
PROJECT: 32227-522	REVISION: A	DRAWING: C7g	

Disclaimer: The information contained herein may be compiled from numerous third party materials that are subject to periodic change without prior notification. While every effort has been made by Matrix Solutions Inc. to ensure the accuracy of the information presented at the time of publication, Matrix Solutions Inc. assumes no liability for any errors, omissions, or inaccuracies in the third party material.

FOR REVIEW



PLAN - LATERAL 3
SCALE 1:1500

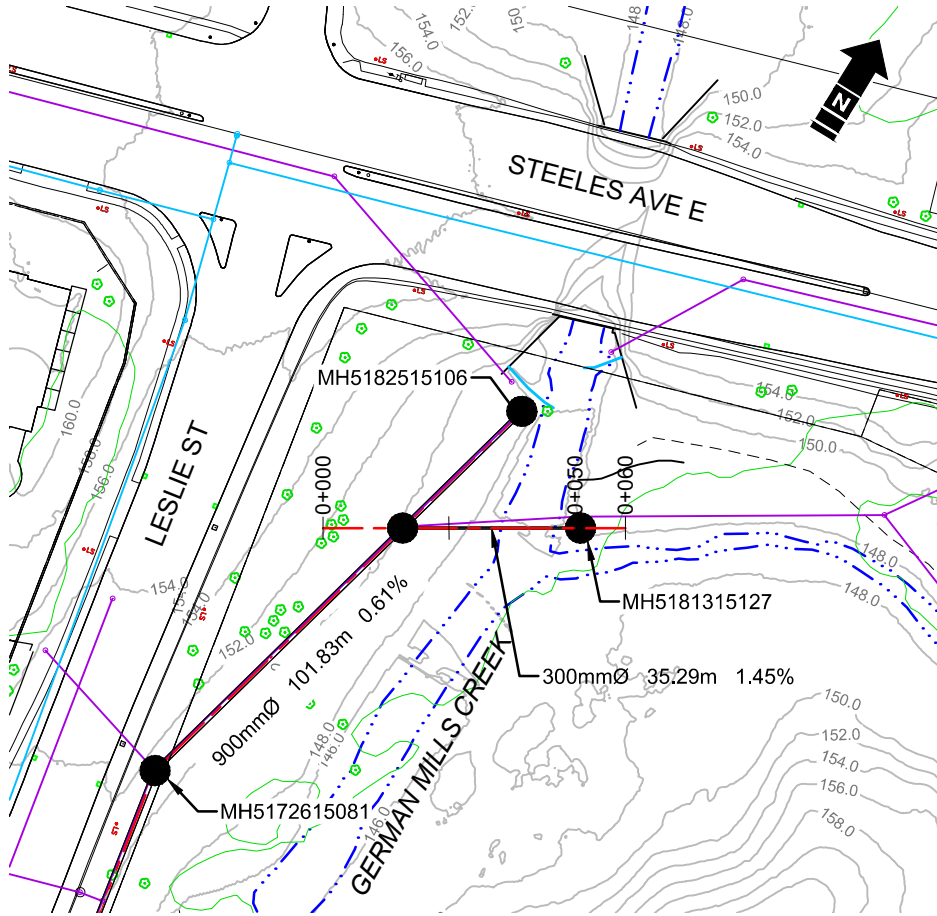


Invert Elevations	140.84 140.94	143.89	145.07
Rim Elevations		145.51	150.23

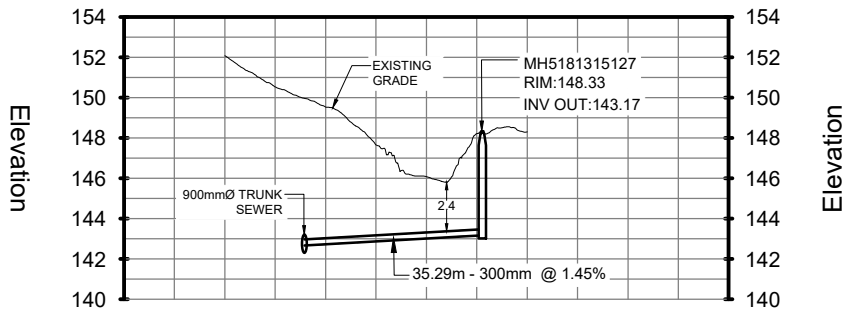
PROFILE - LATERAL 3
HORIZONTAL SCALE 1:1500
VERTICAL SCALE 1:375

LEGEND

- LOT LINE
- RIVER SHORELINE
- TRAIL
- VEGETATION
- EXISTING CONTOUR (2m INTERVAL)
- GRAVITY SEWER
- WATERMAIN
- ALIGNMENT
- SANITARY SEWER
- MANHOLE

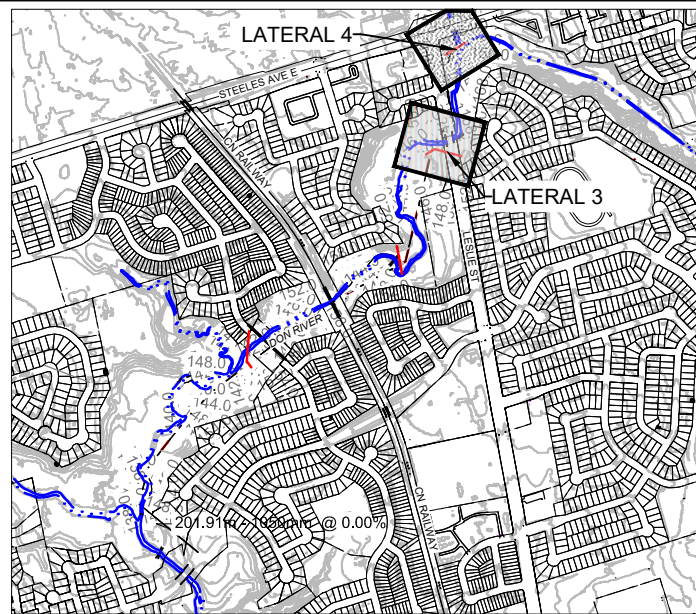


PLAN - LATERAL 4
SCALE 1:1500



Invert Elevations		142.66	143.17
Rim Elevations		148.33	148.33

PROFILE - LATERAL 4
HORIZONTAL SCALE 1:1500
VERTICAL SCALE 1:375



KEY MAP
NOT TO SCALE

- REFERENCE:
- BASE MAP TOPOGRAPHY COMPILED FROM CITY OF TORONTO OPEN SOURCE DATA, TWAG SERVING DATA AND DRF15170_TOPO2D.
 - MAPPED CREEK ALIGNMENT ON PLAN FROM 2018 ORTHOPHOTOGRAPHY DIGITIZED BY MATRIX SOLUTIONS.
 - TOPOGRAPHIC SURFACE BASED ON 2015 LIDAR DIGITAL ELEVATION MODEL (OPEN SOURCE) COMBINED WITH TOPOGRAPHIC AND CHANNEL PROFILE SURVEY BY MATRIX SOLUTIONS JULY TO SEPTEMBER 2021.
 - EXISTING SANITARY SEWER ALIGNMENT AND PROFILE BY WOOD ENVIRONMENTAL & INFRASTRUCTURE SOLUTIONS (S. PACKER, P.ENG.) FROM CIVIL 3D DRAWING FILE RECEIVED NOVEMBER 26, 2021, WITH REFERENCE TO SELECT SEWER AND MANHOLE SURVEYS COMPLETED BY MATRIX SOLUTIONS IN 2021.
 - COORDINATE SYSTEM ONTARIO MTM ZONE 10 NAD27.

MATRIX SOLUTIONS INC.
CERTIFICATE OF AUTHORIZATION
No.: 100187406
Professional Engineers Ontario

REVISION

No.	DATE	DESCRIPTION	BY	CHK.	DRN.
A	2021-12-01	ISSUED FOR REVIEW	SP	RP	KW



CITY OF TORONTO
GERMAN MILLS GSMP EA

PLAN / PROFILE
LATERALS 3 & 4

DATE: DECEMBER 2021	TECHNICAL: S. PACKER	REVIEWER: R. PHILLIPS	DRAWN: K. WEILER
PROJECT: 32227-522	REVISION: A	DRAWING: C7h	

Disclaimer: The information contained herein may be compiled from numerous third party materials that are subject to periodic change without prior notification. While every effort has been made by Matrix Solutions Inc. to ensure the accuracy of the information presented at the time of publication, Matrix Solutions Inc. assumes no liability for any errors, omissions, or inaccuracies in the third party material.