



GERMAN MILLS CREEK GEOMORPHIC SYSTEMS MASTER PLAN EVALUATION OF ALTERNATIVES (PHASE 3) APPENDIX F

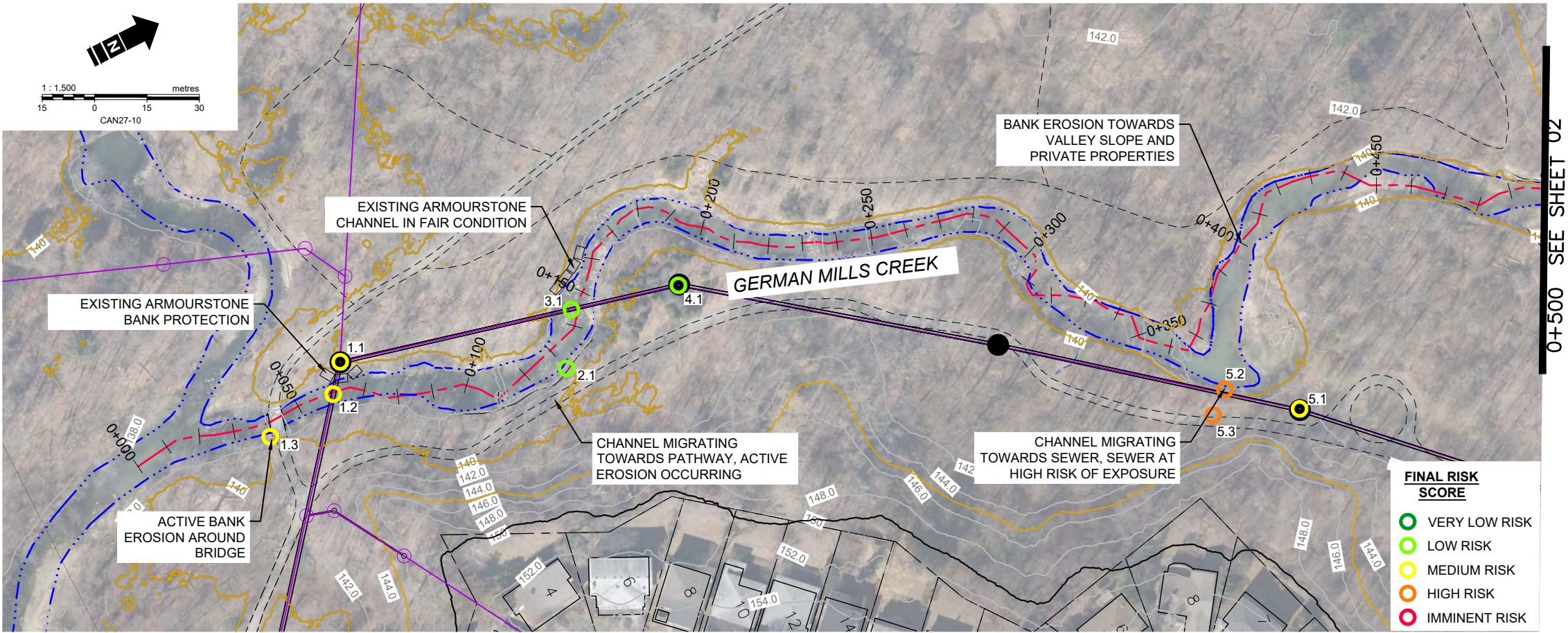
Prepared for:
CITY OF TORONTO

Prepared by:
MATRIX SOLUTIONS INC., A MONTROSE ENVIRONMENTAL COMPANY

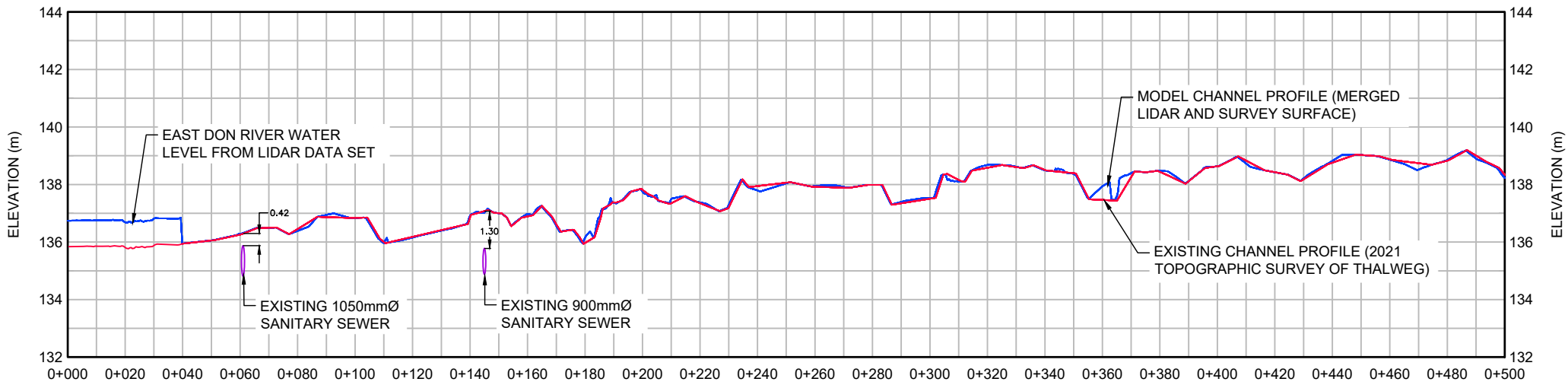
Version 1.0
December 2024
Mississauga, Ontario

Suite 3001, 6865 Century Ave.
Mississauga, ON, Canada L5N 7K2
T 905.877.9531 F 289.323.3785
www.matrix-solutions.com

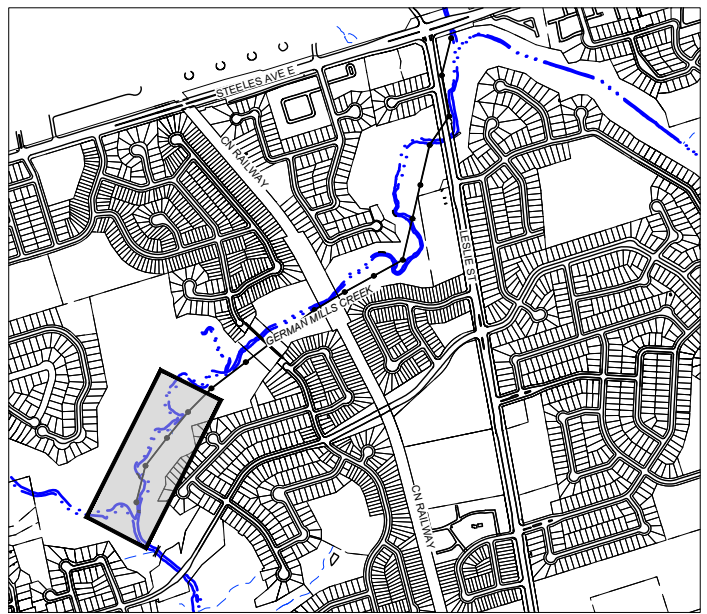
APPENDIX F-1a
Concept Drawings for Design Alternatives 1 and 2



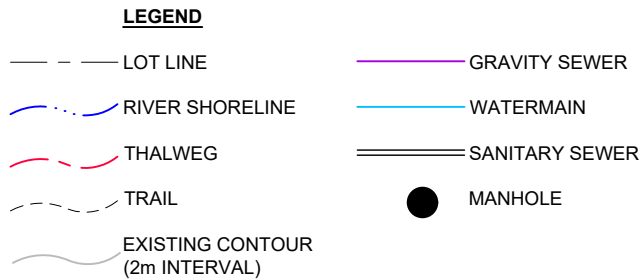
PLAN
SCALE 1:1500



PROFILE
HORIZONTAL SCALE 1:2000
VERTICAL SCALE 1:200



KEY MAP
NOT TO SCALE



- REFERENCE:
- BASE MAP TOPOGRAPHY COMPILED FROM CITY OF TORONTO OPEN SOURCE DATA, TWAG SERVICING DATA AND DRF15170_TOPO2D.
 - MAPPED CREEK ALIGNMENT ON PLAN FROM 2018 ORTHOPHOTOGRAPHY DIGITIZED BY MATRIX SOLUTIONS.
 - TOPOGRAPHIC SURFACE BASED ON 2015 LIDAR DIGITAL ELEVATION MODEL (OPEN SOURCE) COMBINED WITH TOPOGRAPHIC AND CHANNEL PROFILE SURVEY BY MATRIX SOLUTIONS JULY TO SEPTEMBER 2021.
 - EXISTING SANITARY SEWER ALIGNMENT AND PROFILE BY WOOD ENVIRONMENTAL & INFRASTRUCTURE SOLUTIONS (S. PACKER, P.ENG.) FROM CIVIL 3D DRAWING FILE RECEIVED NOVEMBER 26, 2021, WITH REFERENCE TO SELECT SEWER AND MANHOLE SURVEYS COMPLETED BY MATRIX SOLUTIONS IN 2021.
 - COORDINATE SYSTEM ONTARIO MTM ZONE 10 NAD27.

REVISION					
B	2023-01-30	ISSUE FOR REVIEW	NC	RP	KW
A	2022-06-23	ISSUE FOR REVIEW	NC	RP	KW
No.	DATE	DESCRIPTION	BY	CHK.	DRN.

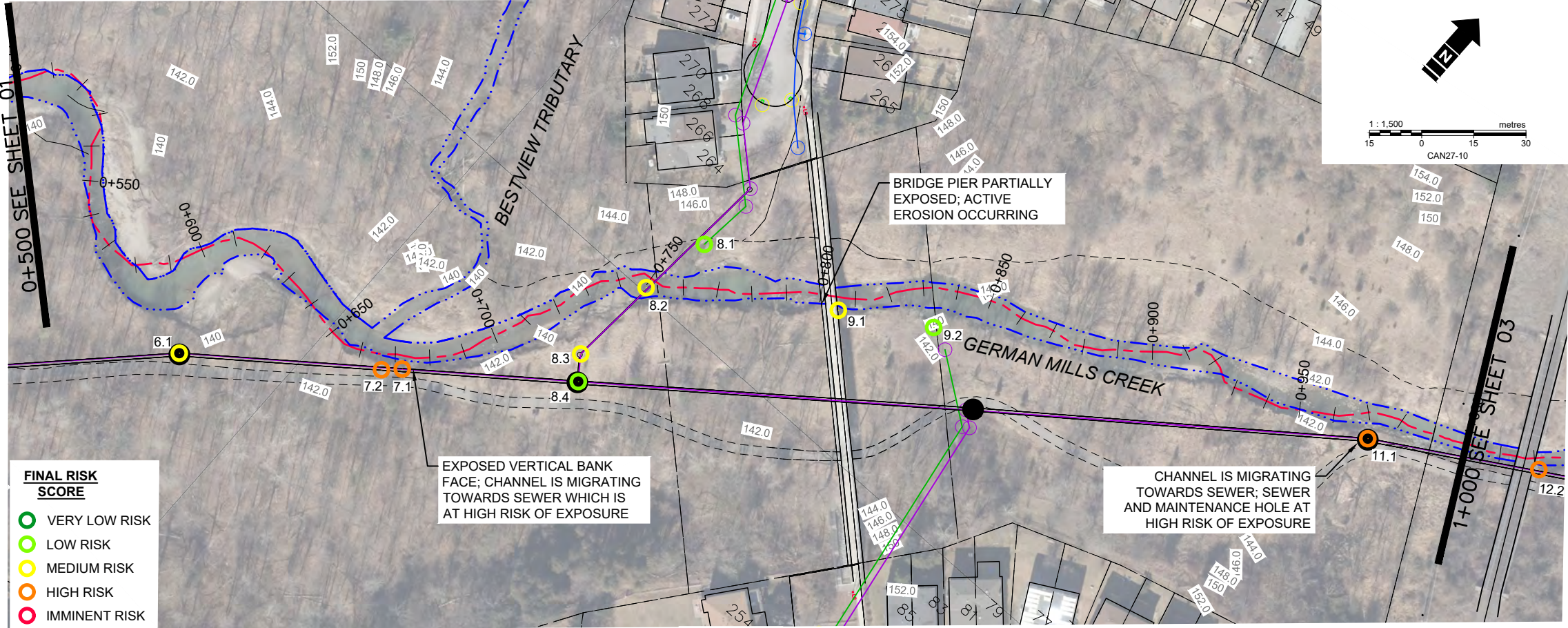


CITY OF TORONTO
GERMAN MILLS GSMP EA

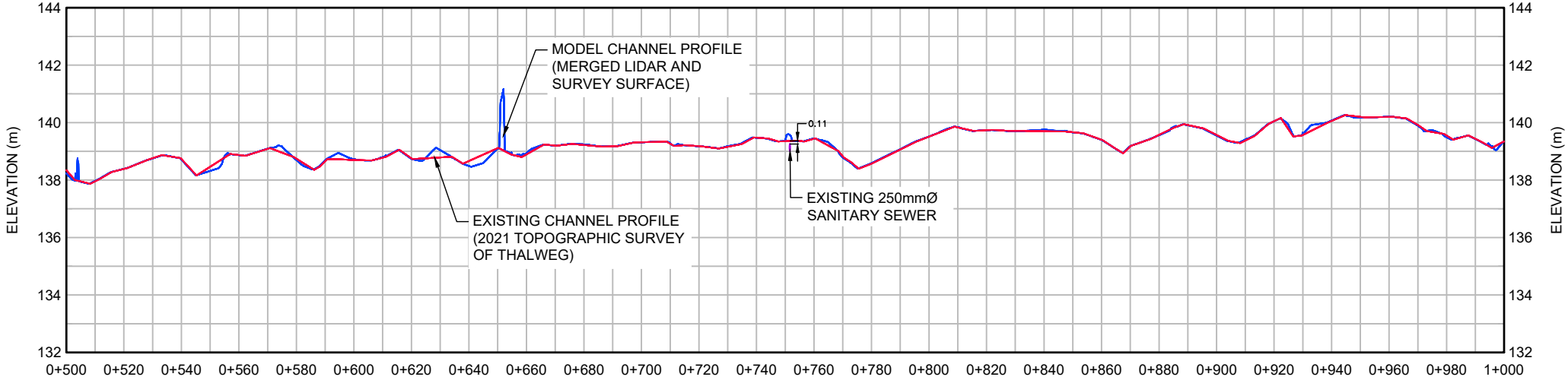
**ALTERNATIVE 1 - DO NOTHING
STA. 0+000 TO 0+500**

DATE:	APRIL 2022	TECHNICAL:	N. CYPLES	REVIEWER:	R. PHILLIPS	DRAWN:	K. WEILER
PROJECT:	32227-504	REVISION:	B	DRAWING:	F1a		

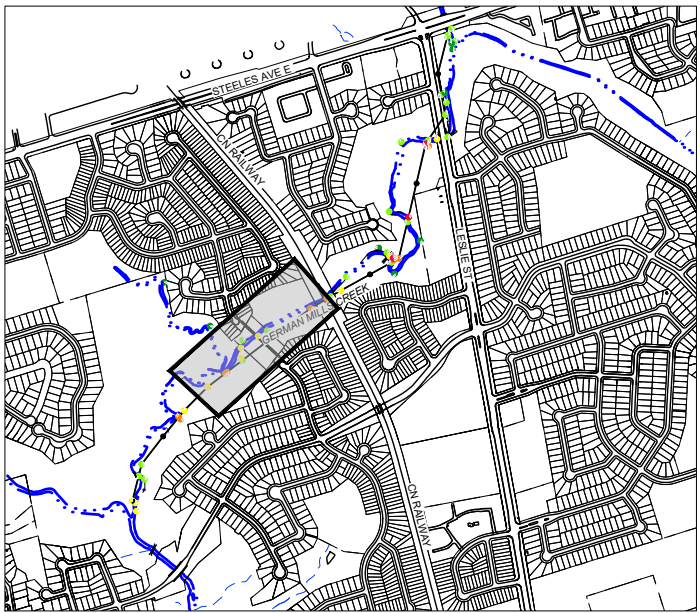
Disclaimer: The information contained herein may be compiled from numerous third party materials that are subject to periodic change without prior notification. While every effort has been made by Matrix Solutions Inc. to ensure the accuracy of the information presented at the time of publication, Matrix Solutions Inc. assumes no liability for any errors, omissions, or inaccuracies in the third party material.



PLAN
SCALE 1:1500



PROFILE
HORIZONTAL SCALE 1:2000
VERTICAL SCALE 1:200



KEY MAP
NOT TO SCALE

- LEGEND**
- LOT LINE
 - RIVER SHORELINE
 - THALWEG
 - TRAIL
 - EXISTING CONTOUR (2m INTERVAL)
 - GRAVITY SEWER
 - WATERMAIN
 - SANITARY SEWER
 - MANHOLE

- REFERENCE:
- BASE MAP TOPOGRAPHY COMPILED FROM CITY OF TORONTO OPEN SOURCE DATA, TWAG SERVICING DATA AND DRP15170_TOPO2D.
 - MAPPED CREEK ALIGNMENT ON PLAN FROM 2018 ORTHOPHOTOGRAPHY DIGITIZED BY MATRIX SOLUTIONS.
 - TOPOGRAPHIC SURFACE BASED ON 2015 LIDAR DIGITAL ELEVATION MODEL (OPEN SOURCE) COMBINED WITH TOPOGRAPHIC AND CHANNEL PROFILE SURVEY BY MATRIX SOLUTIONS JULY TO SEPTEMBER 2021.
 - EXISTING SANITARY SEWER ALIGNMENT AND PROFILE BY WOOD ENVIRONMENTAL & INFRASTRUCTURE SOLUTIONS (S. PACKER, P.ENG.) FROM CIVIL 3D DRAWING FILE RECEIVED NOVEMBER 26, 2021, WITH REFERENCE TO SELECT SEWER AND MANHOLE SURVEYS COMPLETED BY MATRIX SOLUTIONS IN 2021.
 - COORDINATE SYSTEM ONTARIO MTM ZONE 10 NAD27.

REVISION					
B	2023-01-30	ISSUE FOR REVIEW	NC	RP	KW
A	2022-06-23	ISSUE FOR REVIEW	NC	RP	KW
No.	DATE	DESCRIPTION	BY	CHK.	DRN.

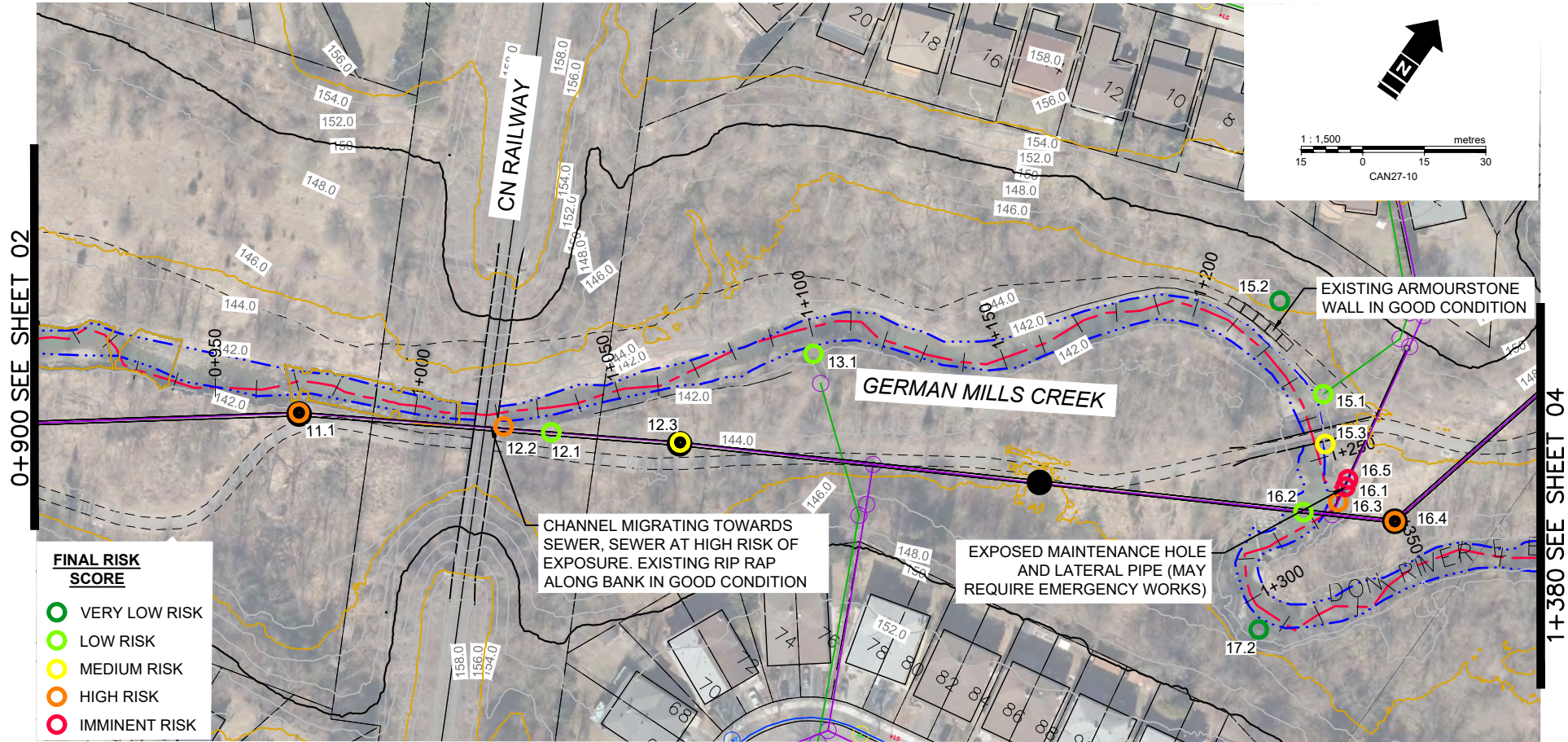


CITY OF TORONTO
GERMAN MILLS GSMP EA

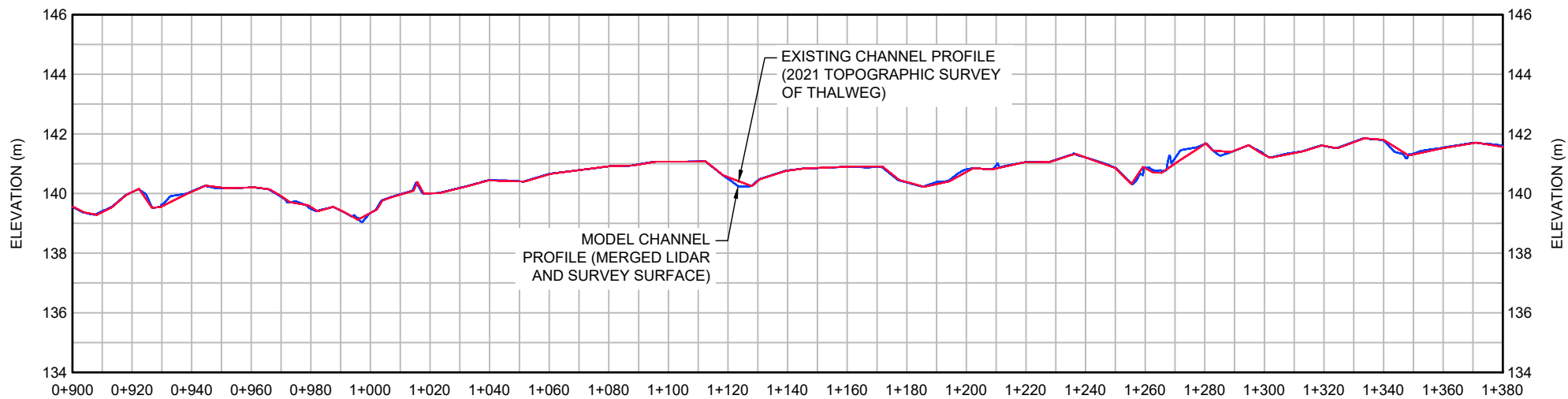
**ALTERNATIVE 1 - DO NOTHING
STA. 0+500 TO 1+000**

DATE:	APRIL 2022	TECHNICAL:	N. CYPLES	REVIEWER:	R. PHILLIPS	DRAWN:	K. WEILER
PROJECT:	32227-504	REVISION:	B	DRAWING:	F1b		

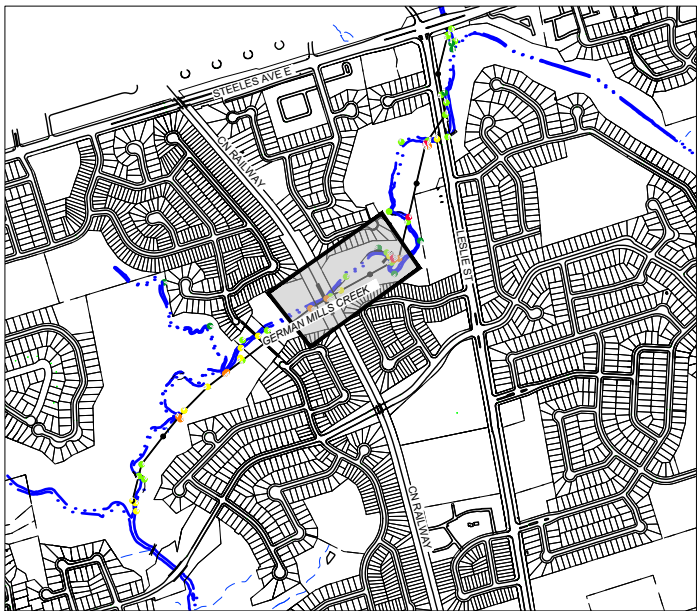
Disclaimer: The information contained herein may be compiled from numerous third party materials that are subject to periodic change without prior notification. While every effort has been made by Matrix Solutions Inc. to ensure the accuracy of the information presented at the time of publication, Matrix Solutions Inc. assumes no liability for any errors, omissions, or inaccuracies in the third party material.



PLAN
SCALE 1:1500



PROFILE
HORIZONTAL SCALE 1:2000
VERTICAL SCALE 1:200



KEY MAP
NOT TO SCALE

- LEGEND**
- LOT LINE
 - RIVER SHORELINE
 - THALWEG
 - TRAIL
 - EXISTING CONTOUR (2m INTERVAL)
 - GRAVITY SEWER
 - WATERMAIN
 - SANITARY SEWER
 - MANHOLE

- REFERENCE:
- BASE MAP TOPOGRAPHY COMPILED FROM CITY OF TORONTO OPEN SOURCE DATA, TWAG SERVING DATA AND DRF15170_TOPO2D.
 - MAPPED CREEK ALIGNMENT ON PLAN FROM 2018 ORTHOPHOTOGRAPHY DIGITIZED BY MATRIX SOLUTIONS.
 - TOPOGRAPHIC SURFACE BASED ON 2015 LIDAR DIGITAL ELEVATION MODEL (OPEN SOURCE) COMBINED WITH TOPOGRAPHIC AND CHANNEL PROFILE SURVEY BY MATRIX SOLUTIONS JULY TO SEPTEMBER 2021.
 - EXISTING SANITARY SEWER ALIGNMENT AND PROFILE BY WOOD ENVIRONMENTAL & INFRASTRUCTURE SOLUTIONS (S. PACKER, P.ENG.) FROM CIVIL 3D DRAWING FILE RECEIVED NOVEMBER 26, 2021, WITH REFERENCE TO SELECT SEWER AND MANHOLE SURVEYS COMPLETED BY MATRIX SOLUTIONS IN 2021.
 - COORDINATE SYSTEM ONTARIO MTM ZONE 10 NAD27.

REVISION					
B	2023-01-30	ISSUE FOR REVIEW	NC	RP	KW
A	2022-06-23	ISSUE FOR REVIEW	NC	RP	KW
No.	DATE	DESCRIPTION	BY	CHK.	DRN.

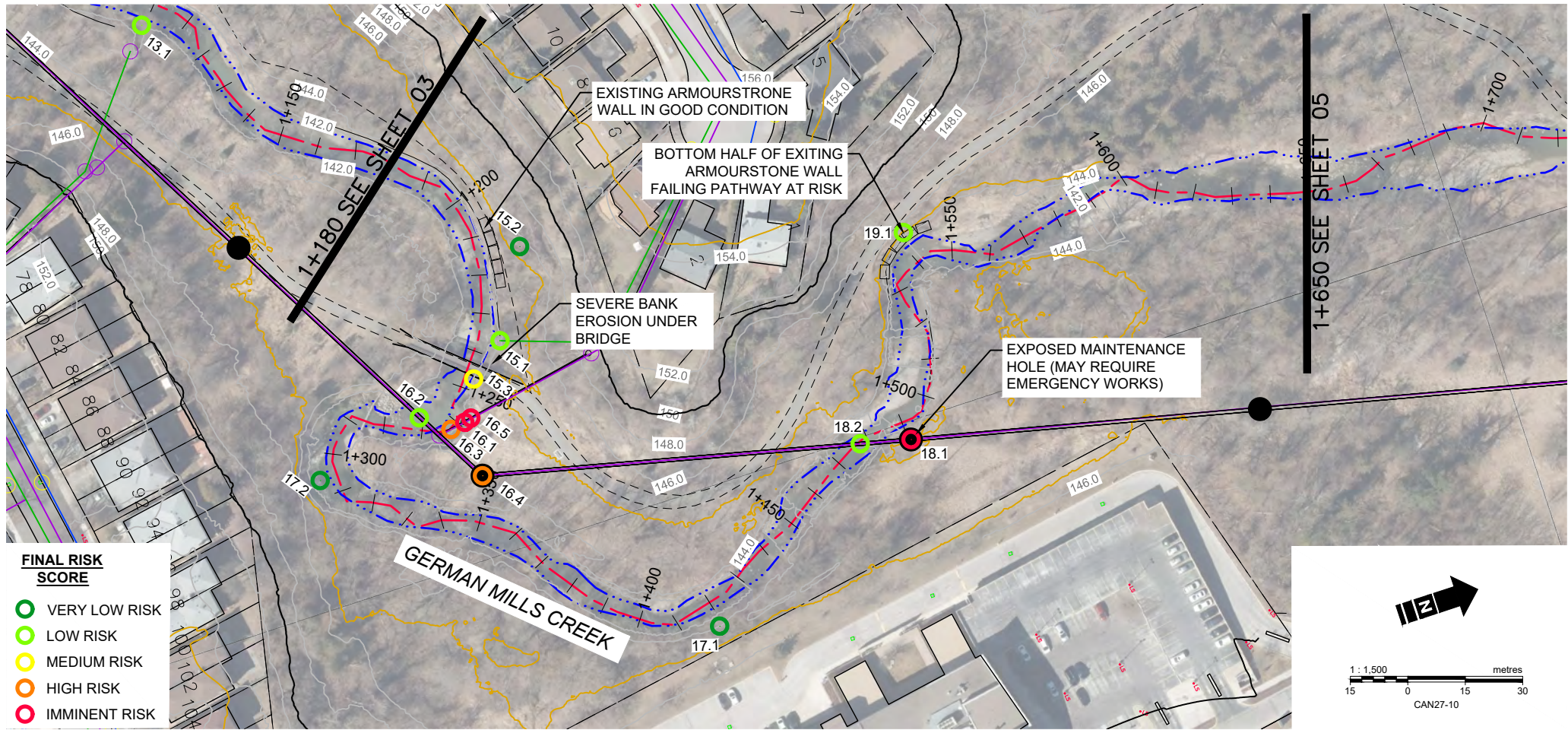


CITY OF TORONTO
GERMAN MILLS GSMP EA

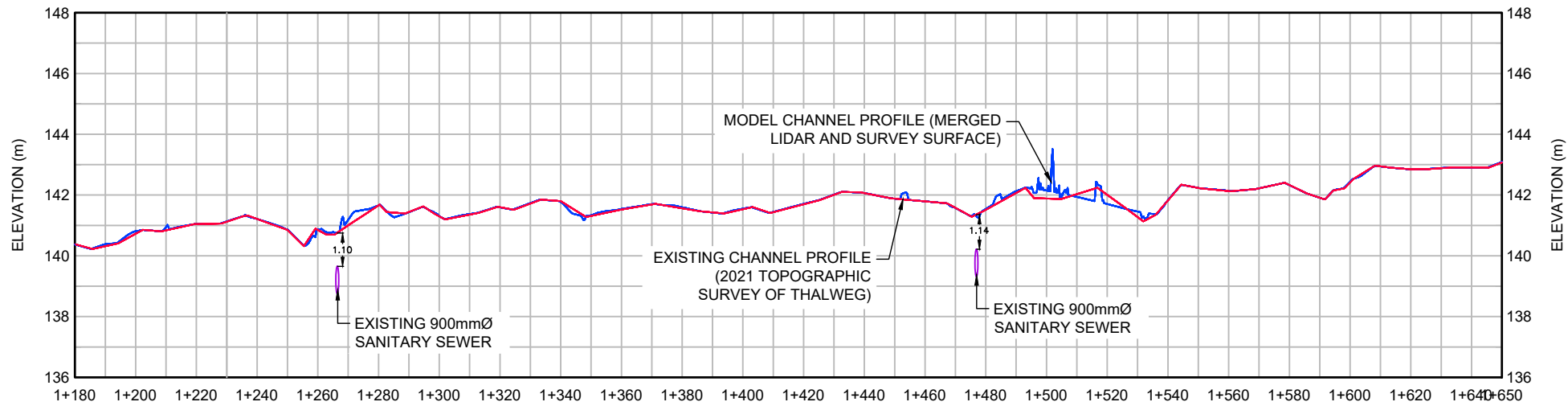
**ALTERNATIVE 1 - DO NOTHING
STA. 0+900 TO 1+380**

DATE:	APRIL 2022	TECHNICAL:	N. CYPLES	REVIEWER:	R. PHILLIPS	DRAWN:	K. WEILER
PROJECT:	32227-504	REVISION:	B	DRAWING:	F1c		

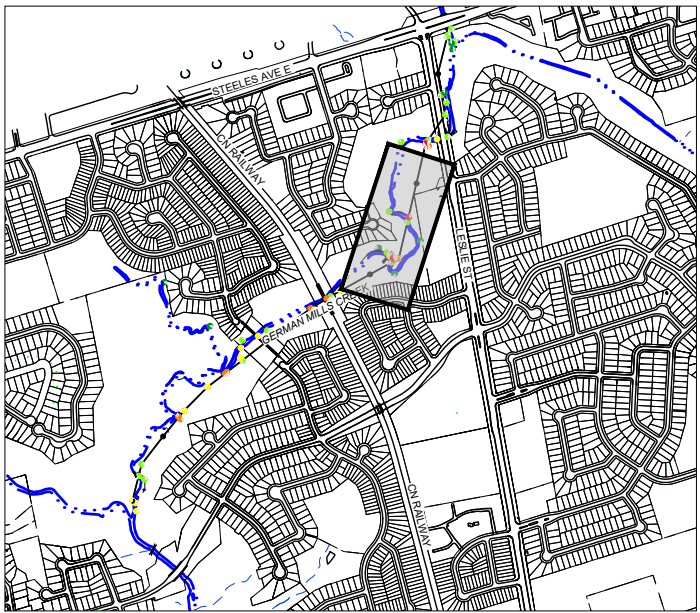
Disclaimer: The information contained herein may be compiled from numerous third party materials that are subject to periodic change without prior notification. While every effort has been made by Matrix Solutions Inc. to ensure the accuracy of the information presented at the time of publication, Matrix Solutions Inc. assumes no liability for any errors, omissions, or inaccuracies in the third party material.



PLAN
SCALE 1:1500



PROFILE
HORIZONTAL SCALE 1:2000
VERTICAL SCALE 1:200



KEY MAP
NOT TO SCALE

- LEGEND**
- LOT LINE
 - RIVER SHORELINE
 - THALWEG
 - TRAIL
 - EXISTING CONTOUR (2m INTERVAL)
 - GRAVITY SEWER
 - WATERMAIN
 - SANITARY SEWER
 - MANHOLE

- REFERENCE:
- BASE MAP TOPOGRAPHY COMPILED FROM CITY OF TORONTO OPEN SOURCE DATA, TWAG SERVICING DATA AND DRF15170_TOPO2D.
 - MAPPED CREEK ALIGNMENT ON PLAN FROM 2018 ORTHOPHOTOGRAPHY DIGITIZED BY MATRIX SOLUTIONS.
 - TOPOGRAPHIC SURFACE BASED ON 2015 LIDAR DIGITAL ELEVATION MODEL (OPEN SOURCE) COMBINED WITH TOPOGRAPHIC AND CHANNEL PROFILE SURVEY BY MATRIX SOLUTIONS JULY TO SEPTEMBER 2021.
 - EXISTING SANITARY SEWER ALIGNMENT AND PROFILE BY WOOD ENVIRONMENTAL & INFRASTRUCTURE SOLUTIONS (S. PACKER, P.ENG.) FROM CIVIL 3D DRAWING FILE RECEIVED NOVEMBER 26, 2021, WITH REFERENCE TO SELECT SEWER AND MANHOLE SURVEYS COMPLETED BY MATRIX SOLUTIONS IN 2021.
 - COORDINATE SYSTEM ONTARIO MTM ZONE 10 NAD27.

REVISION					
B	2023-01-30	ISSUE FOR REVIEW	NC	RP	KW
A	2022-06-23	ISSUE FOR REVIEW	NC	RP	KW
No.	DATE	DESCRIPTION	BY	CHK.	DRN.

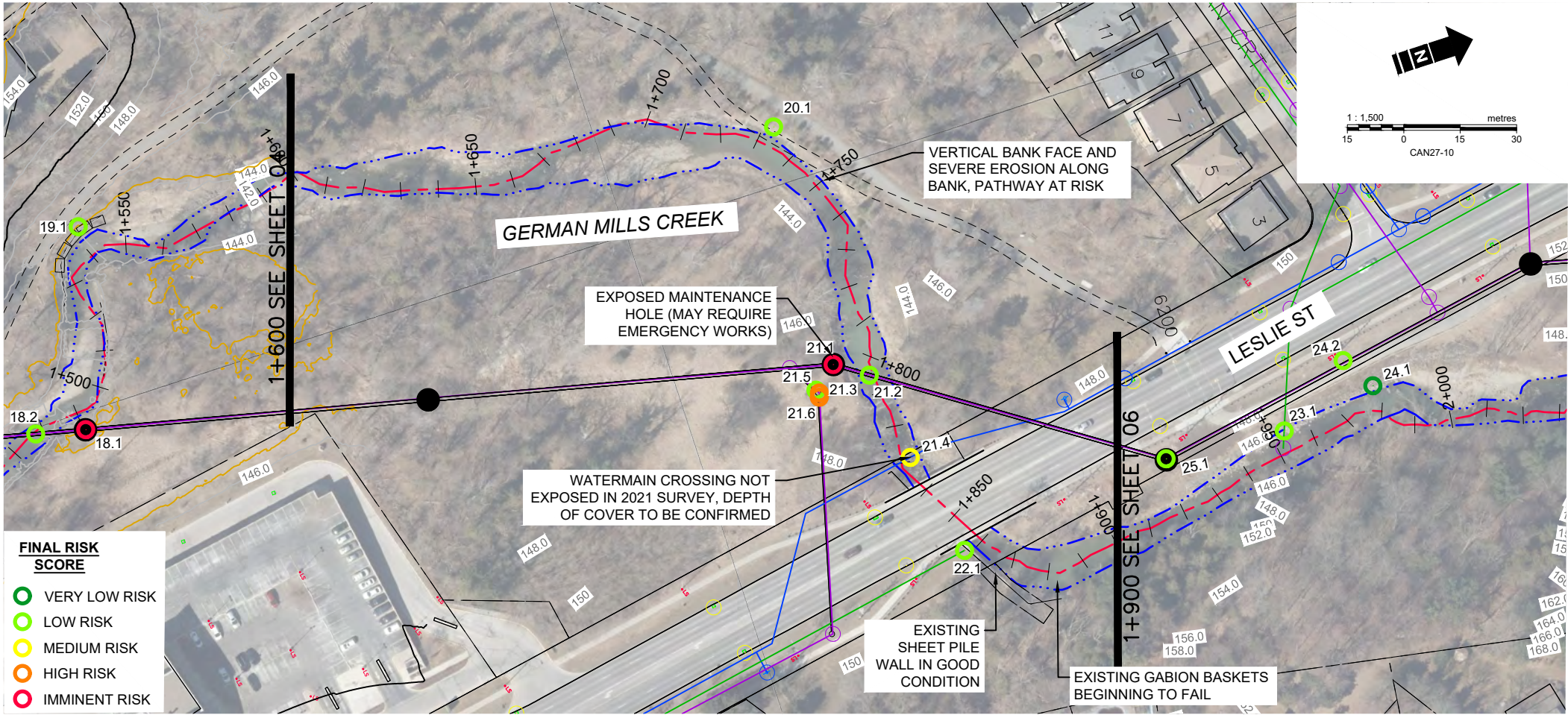
Matrix Solutions Inc.
ENVIRONMENT & ENGINEERING

CITY OF TORONTO
GERMAN MILLS GSMP EA

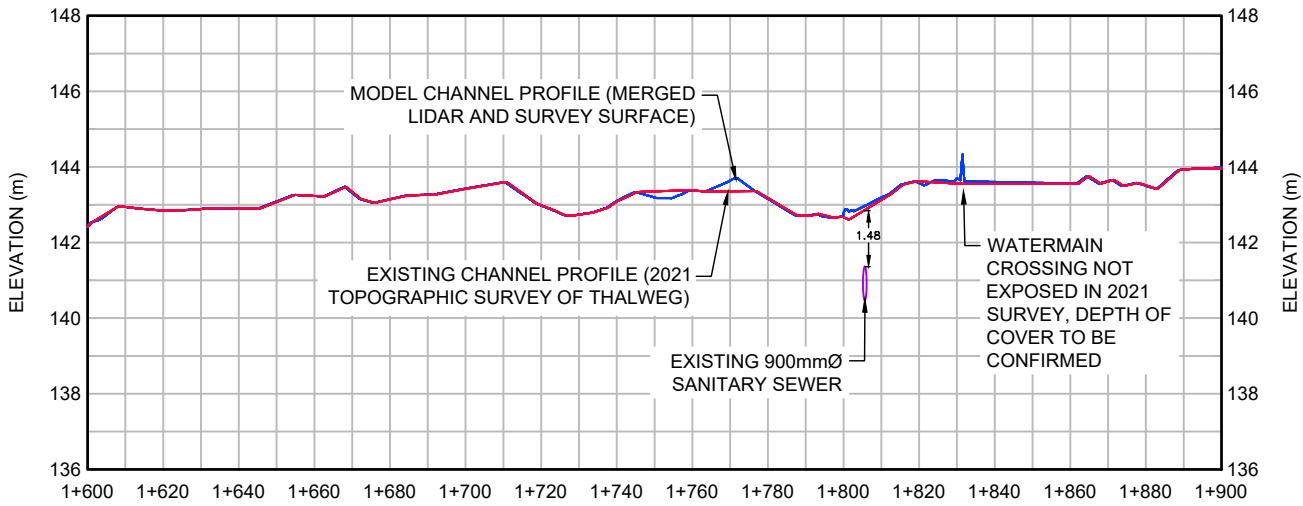
ALTERNATIVE 1 - DO NOTHING
STA. 1+180 TO 1+650

DATE:	APRIL 2022	TECHNICAL:	N. CYPLES	REVIEWER:	R. PHILLIPS	DRAWN:	K. WEILER
PROJECT:	32227-504	REVISION:	B	DRAWING:	F1d		

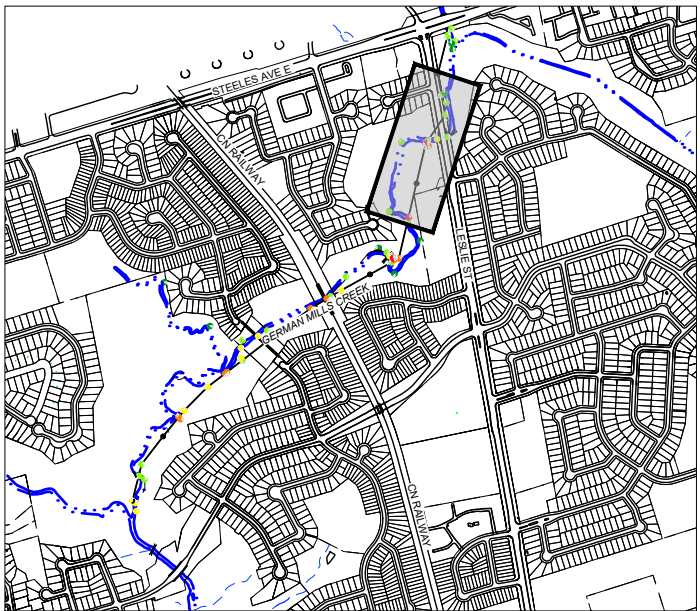
Disclaimer: The information contained herein may be compiled from numerous third party materials that are subject to periodic change without prior notification. While every effort has been made by Matrix Solutions Inc. to ensure the accuracy of the information presented at the time of publication, Matrix Solutions Inc. assumes no liability for any errors, omissions, or inaccuracies in the third party material.



PLAN
SCALE 1:1500



PROFILE
HORIZONTAL SCALE 1:2000
VERTICAL SCALE 1:200



KEY MAP
NOT TO SCALE

LEGEND	
---	LOT LINE
---	RIVER SHORELINE
---	THALWEG
---	TRAIL
---	EXISTING CONTOUR (2m INTERVAL)
---	GRAVITY SEWER
---	WATERMAIN
---	SANITARY SEWER
●	MANHOLE

- REFERENCE:
1. BASE MAP TOPOGRAPHY COMPILED FROM CITY OF TORONTO OPEN SOURCE DATA, TWAG SERVICING DATA AND DRF15170_TOPO2D.
 2. MAPPED CREEK ALIGNMENT ON PLAN FROM 2018 ORTHOPHOTOGRAPHY DIGITIZED BY MATRIX SOLUTIONS.
 3. TOPOGRAPHIC SURFACE BASED ON 2015 LIDAR DIGITAL ELEVATION MODEL (OPEN SOURCE) COMBINED WITH TOPOGRAPHIC AND CHANNEL PROFILE SURVEY BY MATRIX SOLUTIONS JULY TO SEPTEMBER 2021.
 4. EXISTING SANITARY SEWER ALIGNMENT AND PROFILE BY WOOD ENVIRONMENTAL & INFRASTRUCTURE SOLUTIONS (S. PACKER, P.ENG.) FROM CIVIL 3D DRAWING FILE RECEIVED NOVEMBER 26, 2021, WITH REFERENCE TO SELECT SEWER AND MANHOLE SURVEYS COMPLETED BY MATRIX SOLUTIONS IN 2021.
 5. COORDINATE SYSTEM ONTARIO MTM ZONE 10 NAD27.

REVISION					
B	2023-01-30	ISSUE FOR REVIEW	NC	RP	KW
A	2022-06-23	ISSUE FOR REVIEW	NC	RP	KW
No.	DATE	DESCRIPTION	BY	CHK.	DRN.

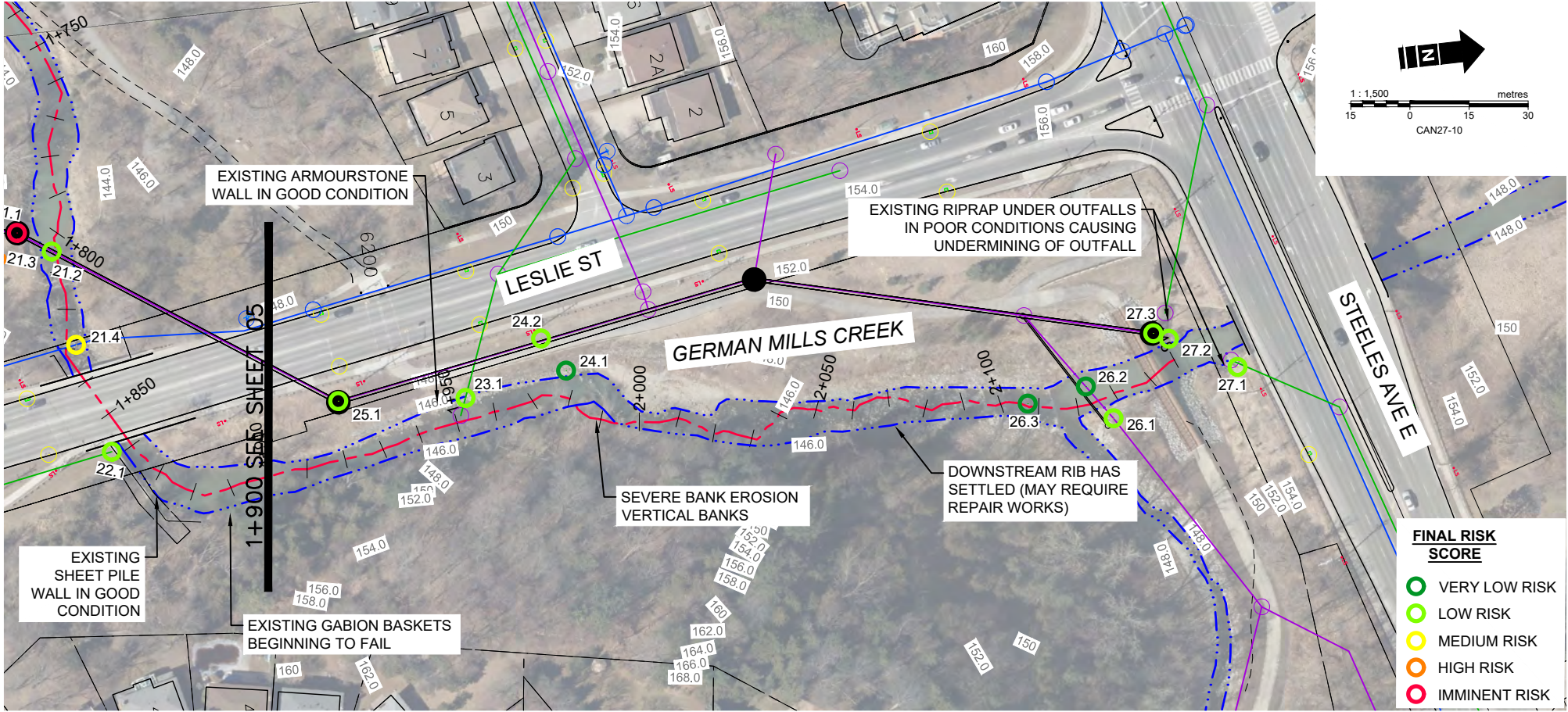
Matrix Solutions Inc.
ENVIRONMENT & ENGINEERING

CITY OF TORONTO
GERMAN MILLS GSMP EA

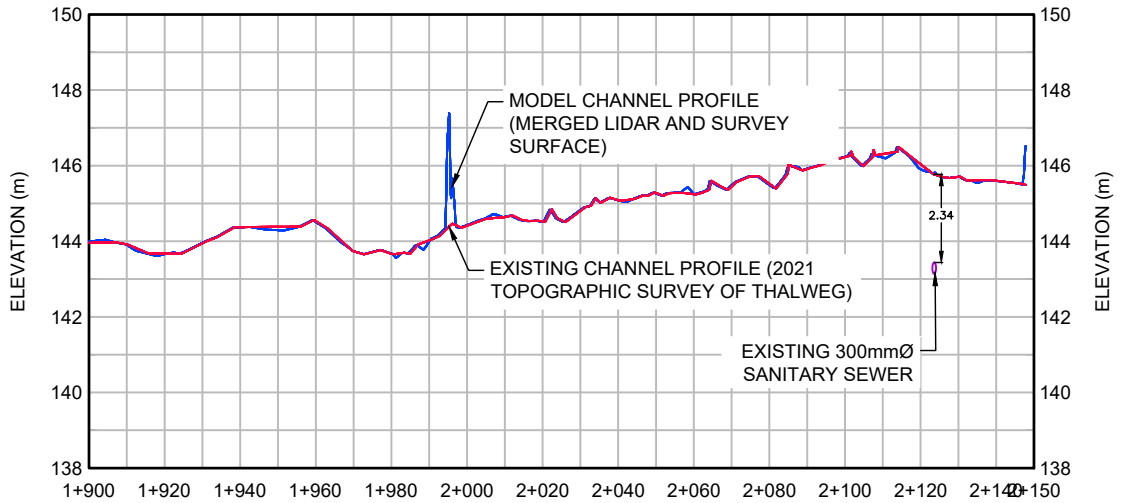
ALTERNATIVE 1 - DO NOTHING
STA. 1+600 TO 1+900

DATE:	APRIL 2022	TECHNICAL:	N. CYPLES	REVIEWER:	R. PHILLIPS	DRAWN:	K. WEILER
PROJECT:	32227-504	REVISION:	B	DRAWING:	F1e		

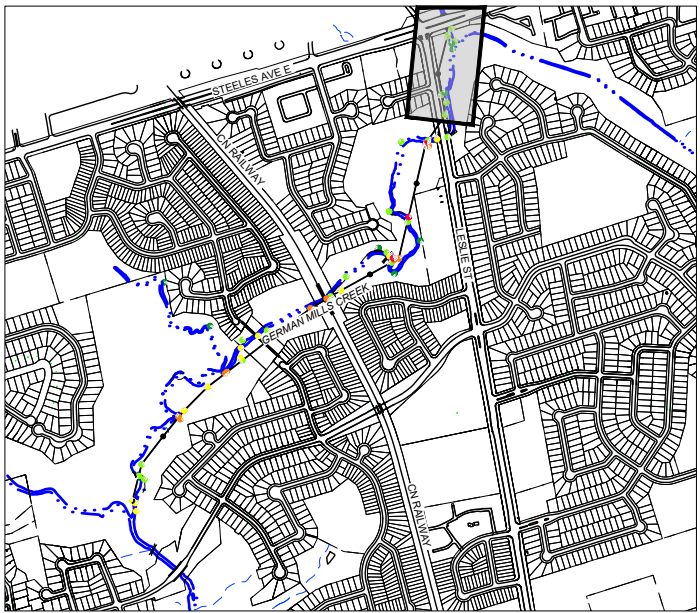
Disclaimer: The information contained herein may be compiled from numerous third party materials that are subject to periodic change without prior notification. While every effort has been made by Matrix Solutions Inc. to ensure the accuracy of the information presented at the time of publication, Matrix Solutions Inc. assumes no liability for any errors, omissions, or inaccuracies in the third party material.



PLAN
SCALE 1:1500



PROFILE
HORIZONTAL SCALE 1:2000
VERTICAL SCALE 1:200



KEY MAP
NOT TO SCALE

- LEGEND**
- LOT LINE
 - RIVER SHORELINE
 - THALWEG
 - TRAIL
 - EXISTING CONTOUR (2m INTERVAL)
 - GRAVITY SEWER
 - WATERMAIN
 - SANITARY SEWER
 - MANHOLE

- REFERENCE:
- BASE MAP TOPOGRAPHY COMPILED FROM CITY OF TORONTO OPEN SOURCE DATA, TWAG SERVICING DATA AND DRF15170_TOPO2D.
 - MAPPED CREEK ALIGNMENT ON PLAN FROM 2018 ORTHOPHOTOGRAPHY DIGITIZED BY MATRIX SOLUTIONS.
 - TOPOGRAPHIC SURFACE BASED ON 2015 LIDAR DIGITAL ELEVATION MODEL (OPEN SOURCE) COMBINED WITH TOPOGRAPHIC AND CHANNEL PROFILE SURVEY BY MATRIX SOLUTIONS JULY TO SEPTEMBER 2021.
 - EXISTING SANITARY SEWER ALIGNMENT AND PROFILE BY WOOD ENVIRONMENTAL & INFRASTRUCTURE SOLUTIONS (S. PACKER, P.ENG.) FROM CIVIL 3D DRAWING FILE RECEIVED NOVEMBER 26, 2021, WITH REFERENCE TO SELECT SEWER AND MANHOLE SURVEYS COMPLETED BY MATRIX SOLUTIONS IN 2021.
 - COORDINATE SYSTEM ONTARIO MTM ZONE 10 NAD27.

REVISION					
B	2023-01-30	ISSUE FOR REVIEW	NC	RP	KW
A	2022-06-23	ISSUE FOR REVIEW	NC	RP	KW
No.	DATE	DESCRIPTION	BY	CHK.	DRN.

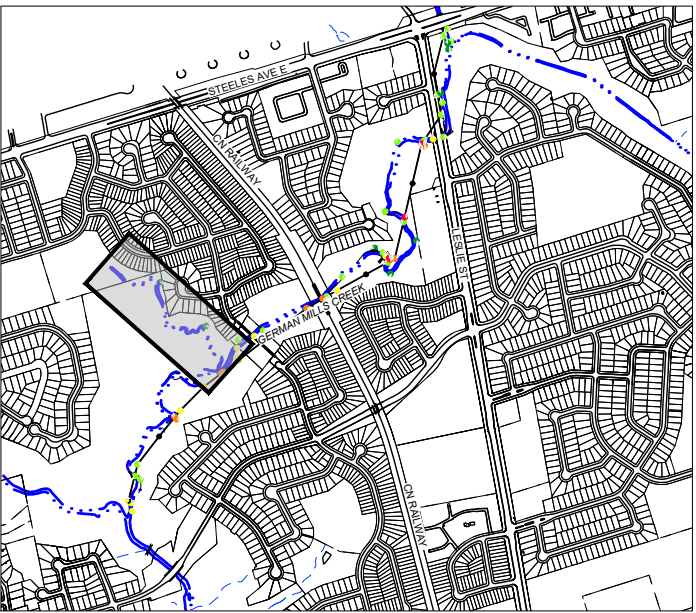
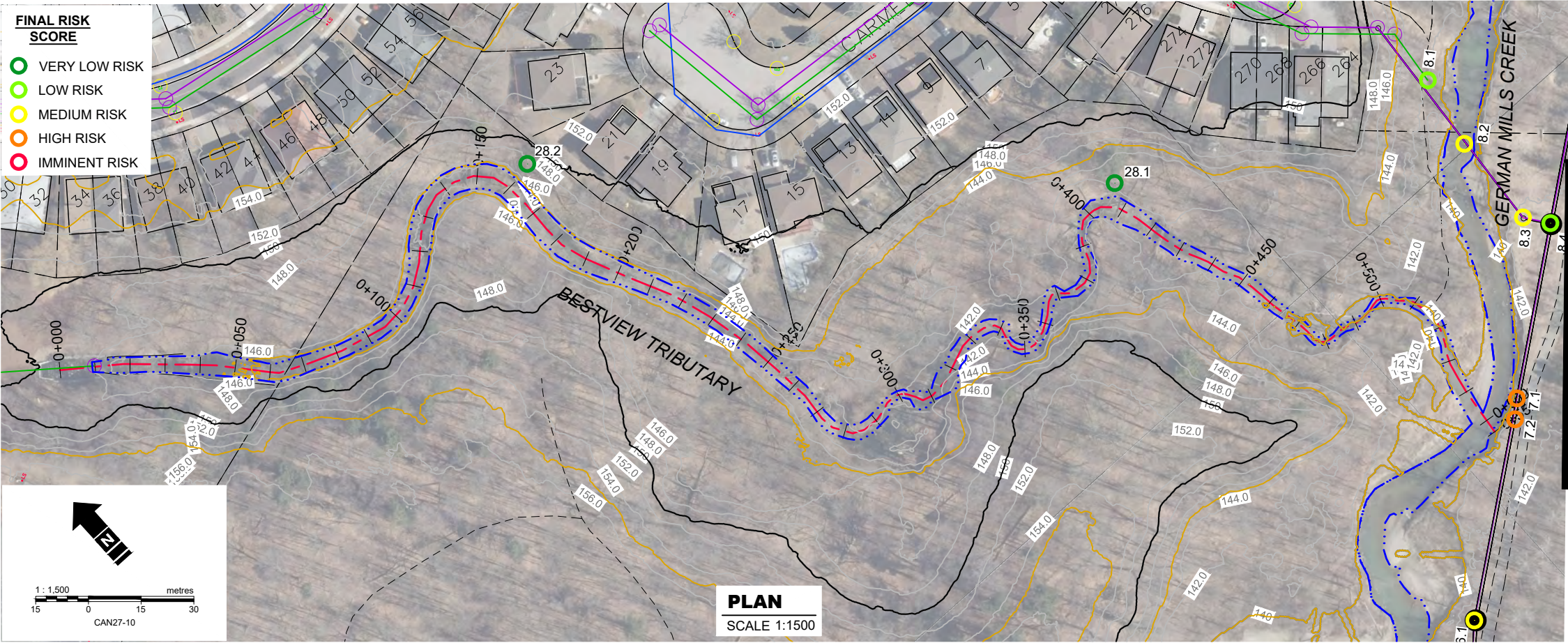
Matrix Solutions Inc.
ENVIRONMENT & ENGINEERING

CITY OF TORONTO
GERMAN MILLS GSMP EA

ALTERNATIVE 1 - DO NOTHING
STA. 1+900 TO 2+148

DATE:	APRIL 2022	TECHNICAL:	N. CYPLES	REVIEWER:	R. PHILLIPS	DRAWN:	K. WEILER
PROJECT:	32227-504	REVISION:	B	DRAWING:	F1f		

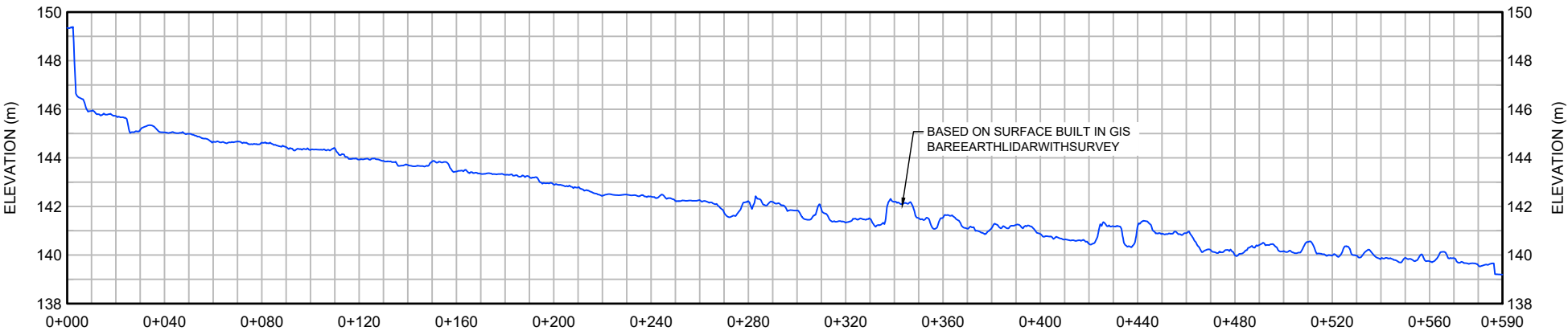
Disclaimer: The information contained herein may be compiled from numerous third party materials that are subject to periodic change without prior notification. While every effort has been made by Matrix Solutions Inc. to ensure the accuracy of the information presented at the time of publication, Matrix Solutions Inc. assumes no liability for any errors, omissions, or inaccuracies in the third party material.



KEY MAP
NOT TO SCALE

- LEGEND**
- LOT LINE
 - RIVER SHORELINE
 - THALWEG
 - TRAIL
 - EXISTING CONTOUR (2m INTERVAL)
 - GRAVITY SEWER
 - WATERMAIN
 - SANITARY SEWER
 - MANHOLE

- REFERENCE:
- BASE MAP TOPOGRAPHY COMPILED FROM CITY OF TORONTO OPEN SOURCE DATA, TWAG SERVICING DATA AND DRF15170_TOPO2D.
 - MAPPED CREEK ALIGNMENT ON PLAN FROM 2018 ORTHOPHOTOGRAPHY DIGITIZED BY MATRIX SOLUTIONS.
 - TOPOGRAPHIC SURFACE BASED ON 2015 LIDAR DIGITAL ELEVATION MODEL (OPEN SOURCE) COMBINED WITH TOPOGRAPHIC AND CHANNEL PROFILE SURVEY BY MATRIX SOLUTIONS JULY TO SEPTEMBER 2021.
 - EXISTING SANITARY SEWER ALIGNMENT AND PROFILE BY WOOD ENVIRONMENTAL & INFRASTRUCTURE SOLUTIONS (S. PACKER, P.ENG.) FROM CIVIL 3D DRAWING FILE RECEIVED NOVEMBER 26, 2021, WITH REFERENCE TO SELECT SEWER AND MANHOLE SURVEYS COMPLETED BY MATRIX SOLUTIONS IN 2021.
 - COORDINATE SYSTEM ONTARIO MTM ZONE 10 NAD27.

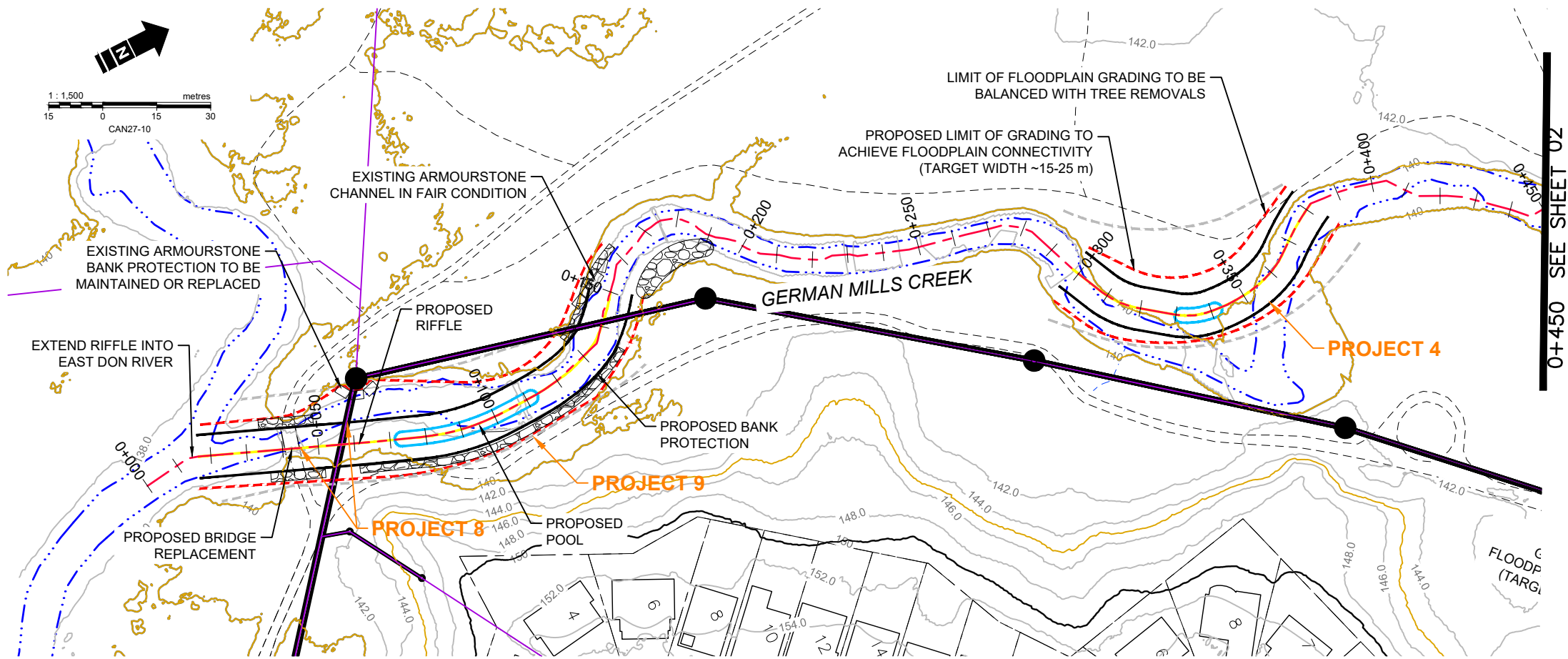


CITY OF TORONTO
GERMAN MILLS GSMP EA

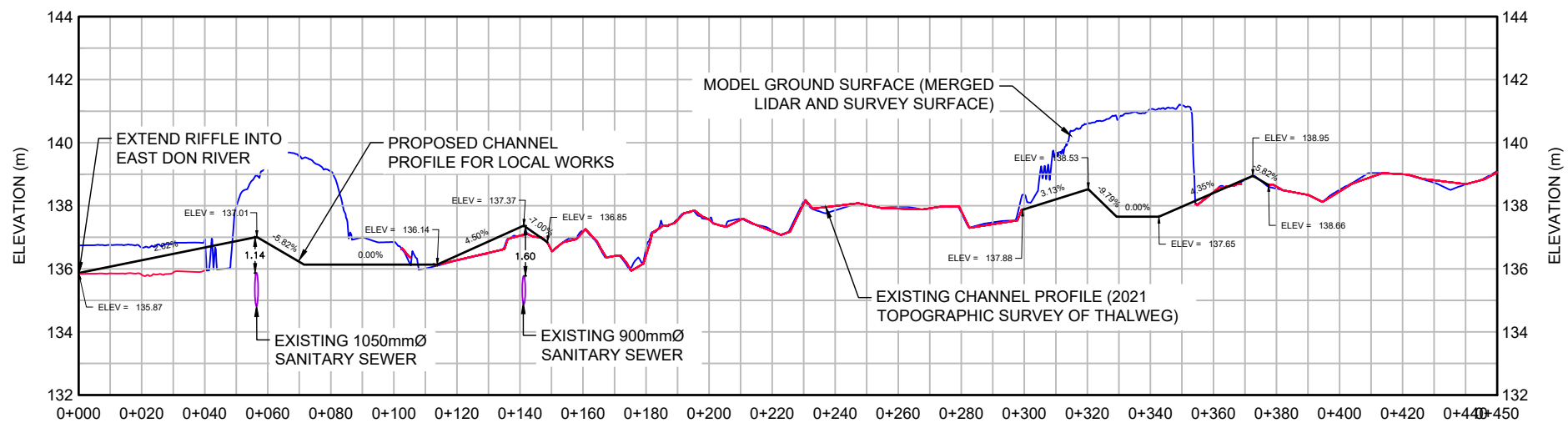
**ALTERNATIVE 1 - DO NOTHING
STA. 0+000 TO 0+610**

DATE:	APRIL 2022	TECHNICAL:	N. CYPLES	REVIEWER:	R. PHILLIPS	DRAWN:	K. WEILER
PROJECT:	32227-504	REVISION:	B	DRAWING:	F1g		

Disclaimer: The information contained herein may be compiled from numerous third party materials that are subject to periodic change without prior notification. While every effort has been made by Matrix Solutions Inc. to ensure the accuracy of the information presented at the time of publication, Matrix Solutions Inc. assumes no liability for any errors, omissions, or inaccuracies in the third party material.

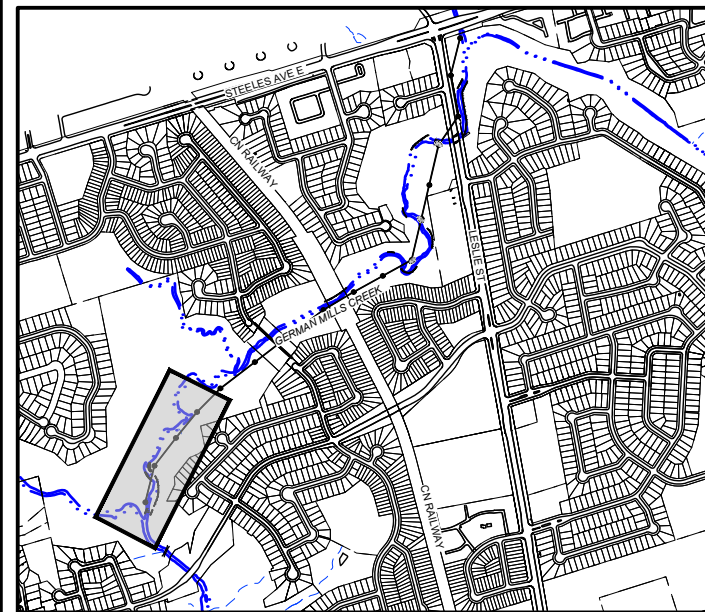


PLAN
SCALE 1:1500



PROFILE
HORIZONTAL SCALE 1:2000
VERTICAL SCALE 1:200

- REFERENCE:
1. BASE MAP TOPOGRAPHY COMPILED FROM CITY OF TORONTO OPEN SOURCE DATA, TWAG SERVICING DATA AND DRF15170_TOPO2D.
 2. MAPPED CREEK ALIGNMENT ON PLAN FROM 2018 ORTHOPHOTOGRAPHY DIGITIZED BY MATRIX SOLUTIONS.
 3. TOPOGRAPHIC SURFACE BASED ON 2015 LIDAR DIGITAL ELEVATION MODEL (OPEN SOURCE) COMBINED WITH TOPOGRAPHIC AND CHANNEL PROFILE SURVEY BY MATRIX SOLUTIONS JULY TO SEPTEMBER 2021.
 4. EXISTING SANITARY SEWER ALIGNMENT AND PROFILE BY WOOD ENVIRONMENTAL & INFRASTRUCTURE SOLUTIONS (S. PACKER, P.ENG.) FROM CIVIL 3D DRAWING FILE RECEIVED NOVEMBER 26, 2021, WITH REFERENCE TO SELECT SEWER AND MAINTENANCE HOLE SURVEYS COMPLETED BY MATRIX SOLUTIONS IN 2021.
 5. COORDINATE SYSTEM ONTARIO MTM ZONE 10 NAD27.



KEY MAP
NOT TO SCALE

LEGEND	
--- LOT LINE	CHANNEL REALIGNMENT
--- RIVER SHORELINE	CHANNEL BANK
--- THALWEG	MINIMUM GRADING LIMIT
--- TRAIL	MAXIMUM GRADING LIMIT
--- EXISTING CONTOUR (2m INTERVAL)	EXISTING ARMOURSTONE
--- SANITARY SEWER	PROPOSED BANK AND TOE RESTORATION WITH EXPOSED ARMOURSTONE
--- STORM SEWER	PROPOSED BANK AND TOE RESTORATION WITH BURIED ARMOURSTONE
--- WATERMAIN	PROPOSED BANK RESTORATION AND BIOENGINEERING
--- SANITARY SEWER	RIFFLE
● MAINTENANCE HOLE	POOL

REVISION

No.	DATE	DESCRIPTION	BY	CHK.	DRN.
B	2023-01-30	ISSUE FOR REVIEW	NC	RP	KW
A	2022-06-23	ISSUE FOR REVIEW	NC	RP	KW

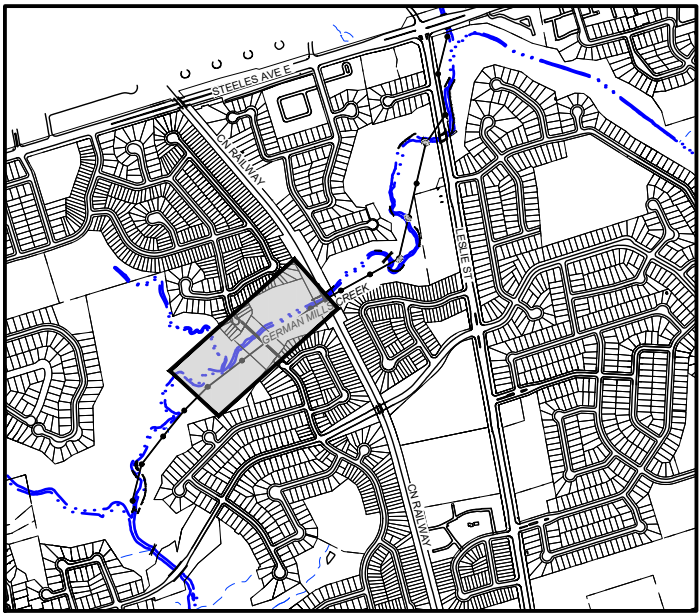
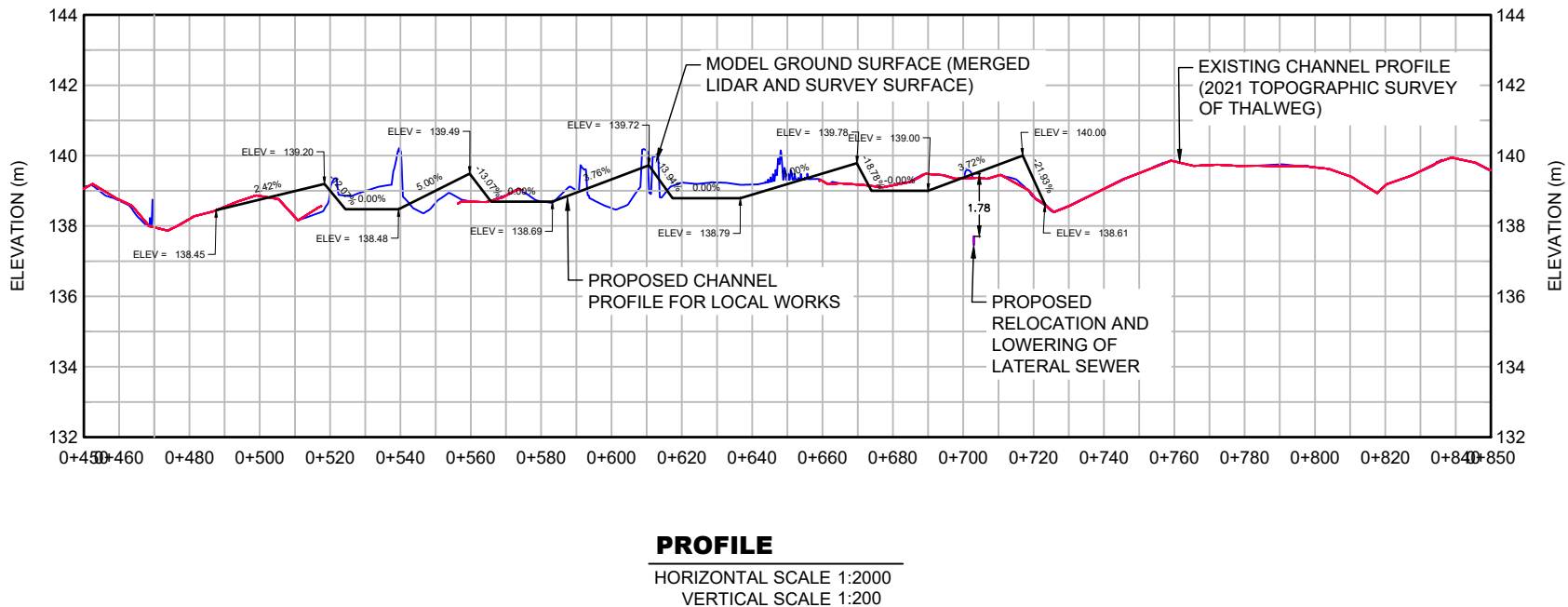
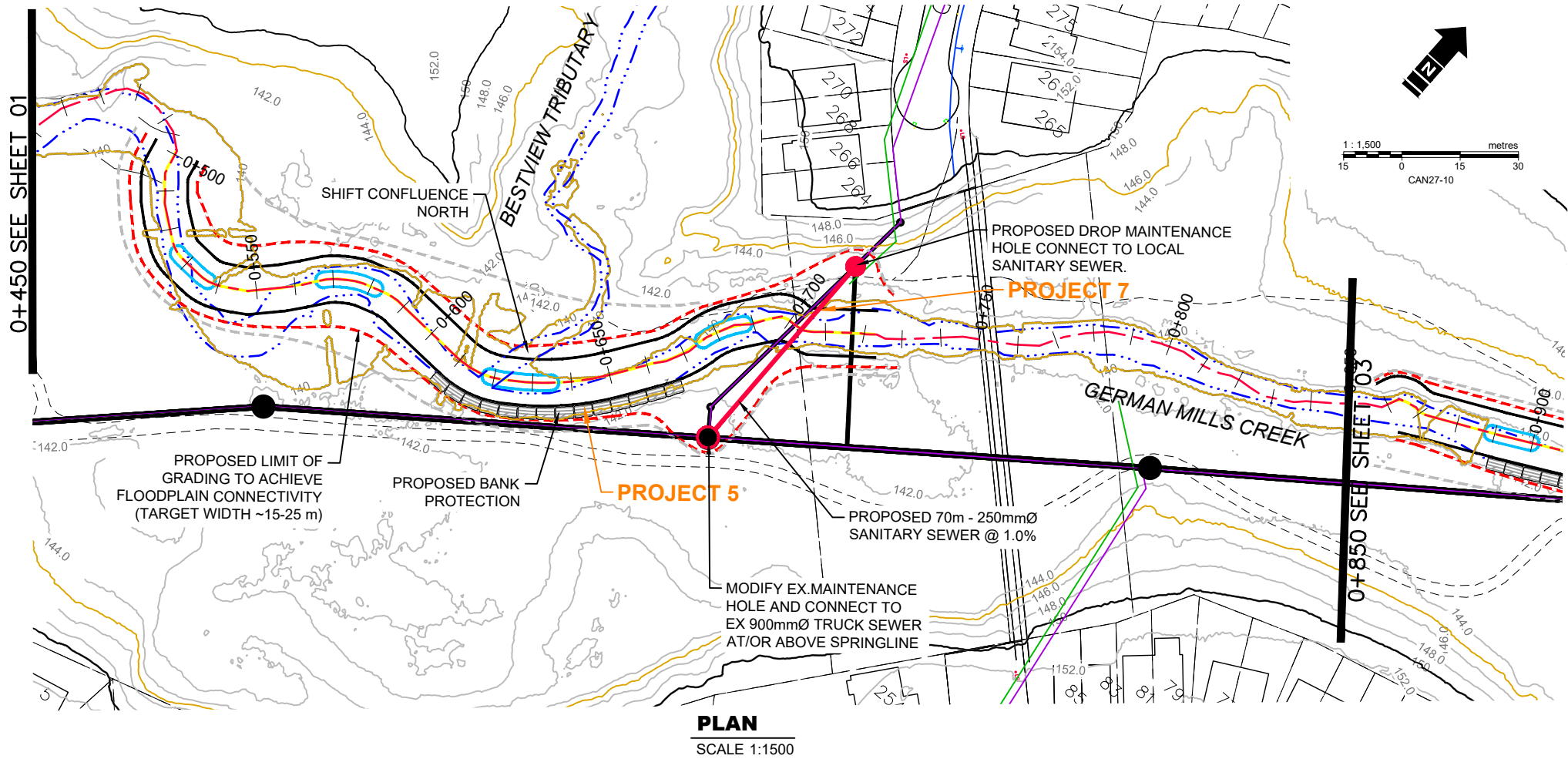


CITY OF TORONTO
GERMAN MILLS GSMP EA

**ALTERNATIVE 2 - LOCAL WORKS
STA. 0+000 TO 0+450**

DATE: APRIL 2022	TECHNICAL: N. CYPLES	REVIEWER: R. PHILLIPS	DRAWN: K. WEILER
PROJECT: 32227-504	REVISION: A	DRAWING: F1h	

Disclaimer: The information contained herein may be compiled from numerous third party materials that are subject to periodic change without prior notification. While every effort has been made by Matrix Solutions Inc. to ensure the accuracy of the information presented at the time of publication, Matrix Solutions Inc. assumes no liability for any errors, omissions, or inaccuracies in the third party material.



KEY MAP
NOT TO SCALE

LEGEND	
---	LOT LINE
---	RIVER SHORELINE
---	THALWEG
---	TRAIL
---	EXISTING CONTOUR (2m INTERVAL)
---	SANITARY SEWER
---	STORM SEWER
---	WATERMAIN
---	SANITARY SEWER
●	MAINTENANCE HOLE
---	CHANNEL REALIGNMENT
---	CHANNEL BANK
---	MINIMUM GRADING LIMIT
---	MAXIMUM GRADING LIMIT
---	EXISTING ARMOURSTONE
---	PROPOSED BANK AND TOE RESTORATION WITH EXPOSED ARMOURSTONE
---	PROPOSED BANK AND TOE RESTORATION WITH BURIED ARMOURSTONE
---	PROPOSED BANK RESTORATION AND BIOENGINEERING
---	RIFFLE
---	POOL

REVISION					
B	2023-01-30	ISSUE FOR REVIEW		NC	RP
A	2022-06-23	ISSUE FOR REVIEW		NC	RP
No.	DATE	DESCRIPTION	BY	CHK.	DRN.

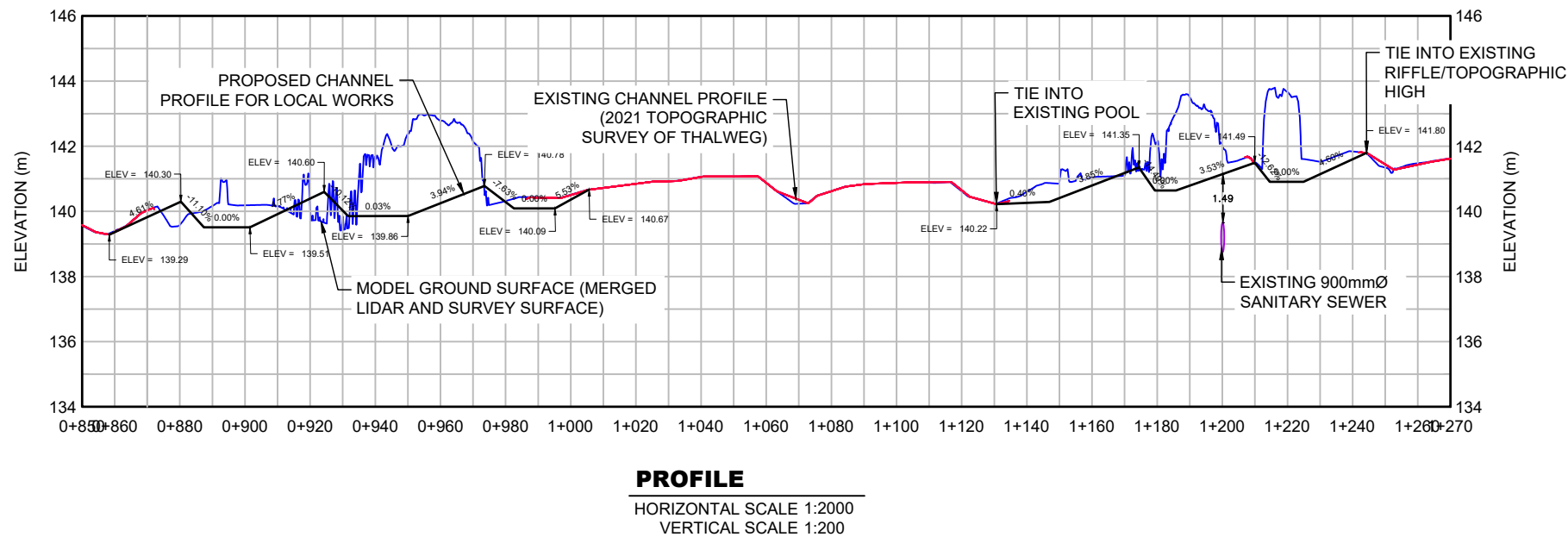
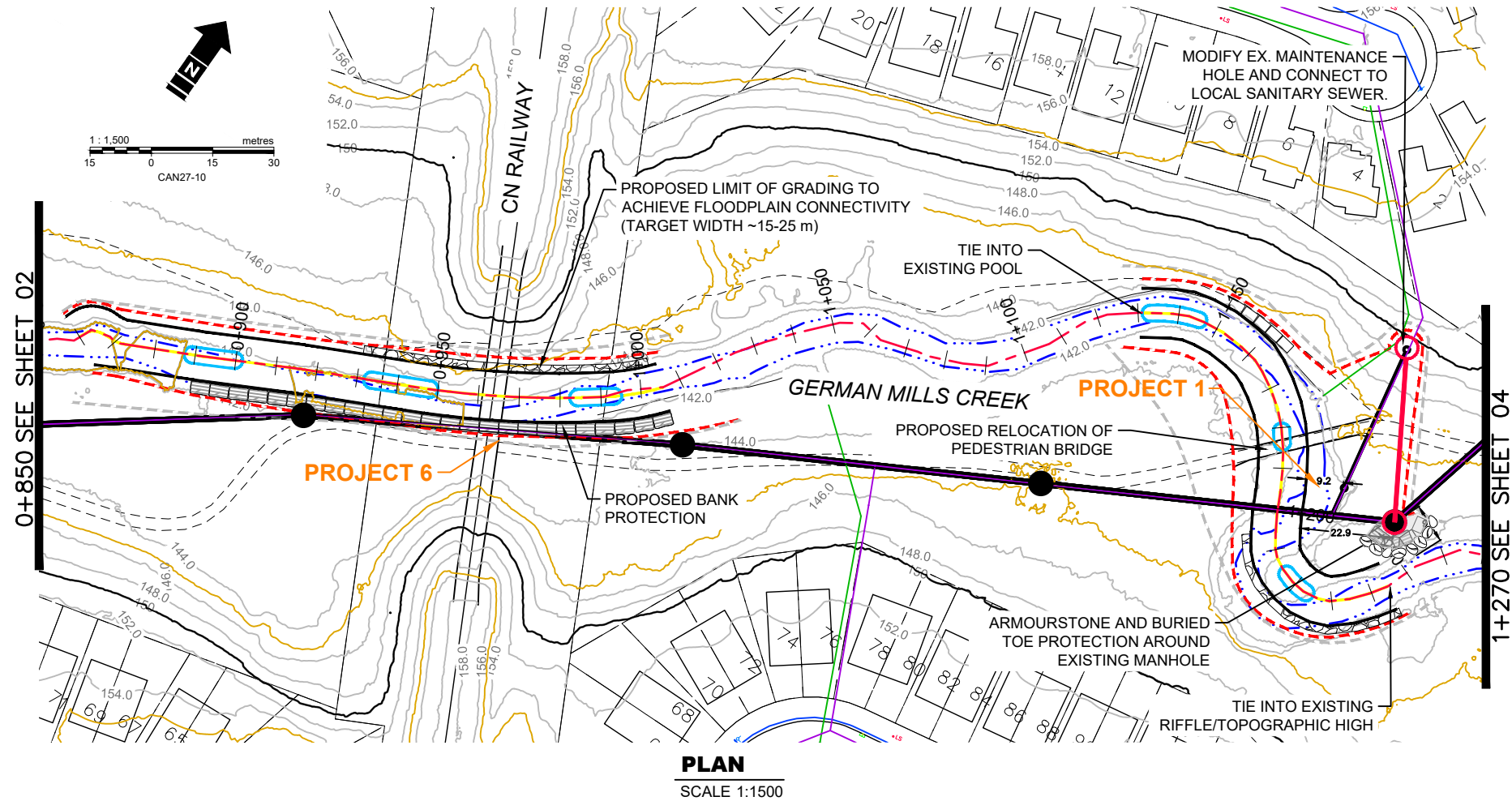


CITY OF TORONTO
GERMAN MILLS GSMP EA

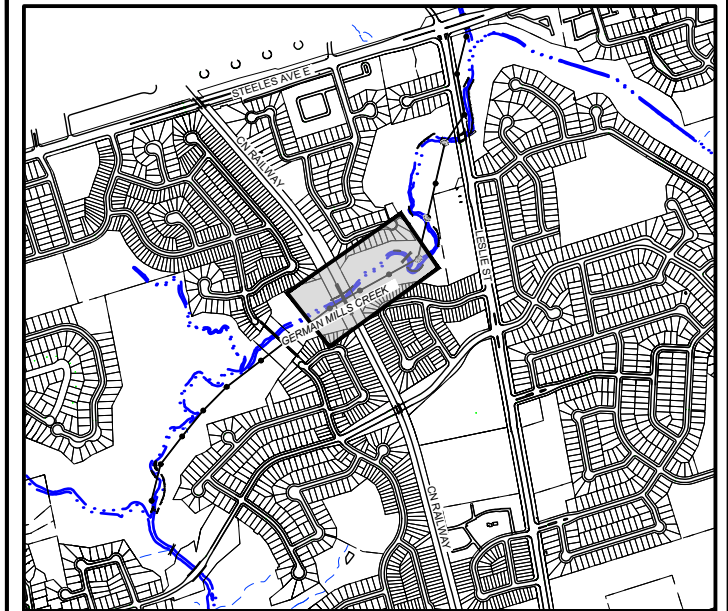
ALTERNATIVE 2 - LOCAL WORKS
STA. 0+450 TO 0+850

DATE:	APRIL 2022	TECHNICAL:	N. CYPLES	REVIEWER:	R. PHILLIPS	DRAWN:	K. WEILER
PROJECT:	32227-504	REVISION:	A	DRAWING:	F1i		

Disclaimer: The information contained herein may be compiled from numerous third party materials that are subject to periodic change without prior notification. While every effort has been made by Matrix Solutions Inc. to ensure the accuracy of the information presented at the time of publication, Matrix Solutions Inc. assumes no liability for any errors, omissions, or inaccuracies in the third party material.



- REFERENCE:
1. BASE MAP TOPOGRAPHY COMPILED FROM CITY OF TORONTO OPEN SOURCE DATA, TWAG SERVICING DATA AND DRF15170_TOPO2D.
 2. MAPPED CREEK ALIGNMENT ON PLAN FROM 2018 ORTHOPHOTOGRAPHY DIGITIZED BY MATRIX SOLUTIONS.
 3. TOPOGRAPHIC SURFACE BASED ON 2015 LIDAR DIGITAL ELEVATION MODEL (OPEN SOURCE) COMBINED WITH TOPOGRAPHIC AND CHANNEL PROFILE SURVEY BY MATRIX SOLUTIONS JULY TO SEPTEMBER 2021.
 4. EXISTING SANITARY SEWER ALIGNMENT AND PROFILE BY WOOD ENVIRONMENTAL & INFRASTRUCTURE SOLUTIONS (S. PACKER, P.ENG.) FROM CIVIL 3D DRAWING FILE RECEIVED NOVEMBER 26, 2021, WITH REFERENCE TO SELECT SEWER AND MAINTENANCE HOLE SURVEYS COMPLETED BY MATRIX SOLUTIONS IN 2021.
 5. COORDINATE SYSTEM ONTARIO MTM ZONE 10 NAD27.



KEY MAP
NOT TO SCALE

LEGEND	
LOT LINE	CHANNEL REALIGNMENT
RIVER SHORELINE	CHANNEL BANK
THALWEG	MINIMUM GRADING LIMIT
TRAIL	MAXIMUM GRADING LIMIT
EXISTING CONTOUR (2m INTERVAL)	EXISTING ARMOURSTONE
SANITARY SEWER	PROPOSED BANK AND TOE RESTORATION WITH EXPOSED ARMOURSTONE
STORM SEWER	PROPOSED BANK AND TOE RESTORATION WITH BURIED ARMOURSTONE
WATERMAIN	PROPOSED BANK RESTORATION AND BIOENGINEERING
SANITARY SEWER	RIFFLE
MAINTENANCE HOLE	POOL

REVISION					
B	2023-01-30	ISSUE FOR REVIEW	NC	RP	KW
A	2022-06-23	ISSUE FOR REVIEW	NC	RP	KW
No.	DATE	DESCRIPTION	BY	CHK.	DRN.

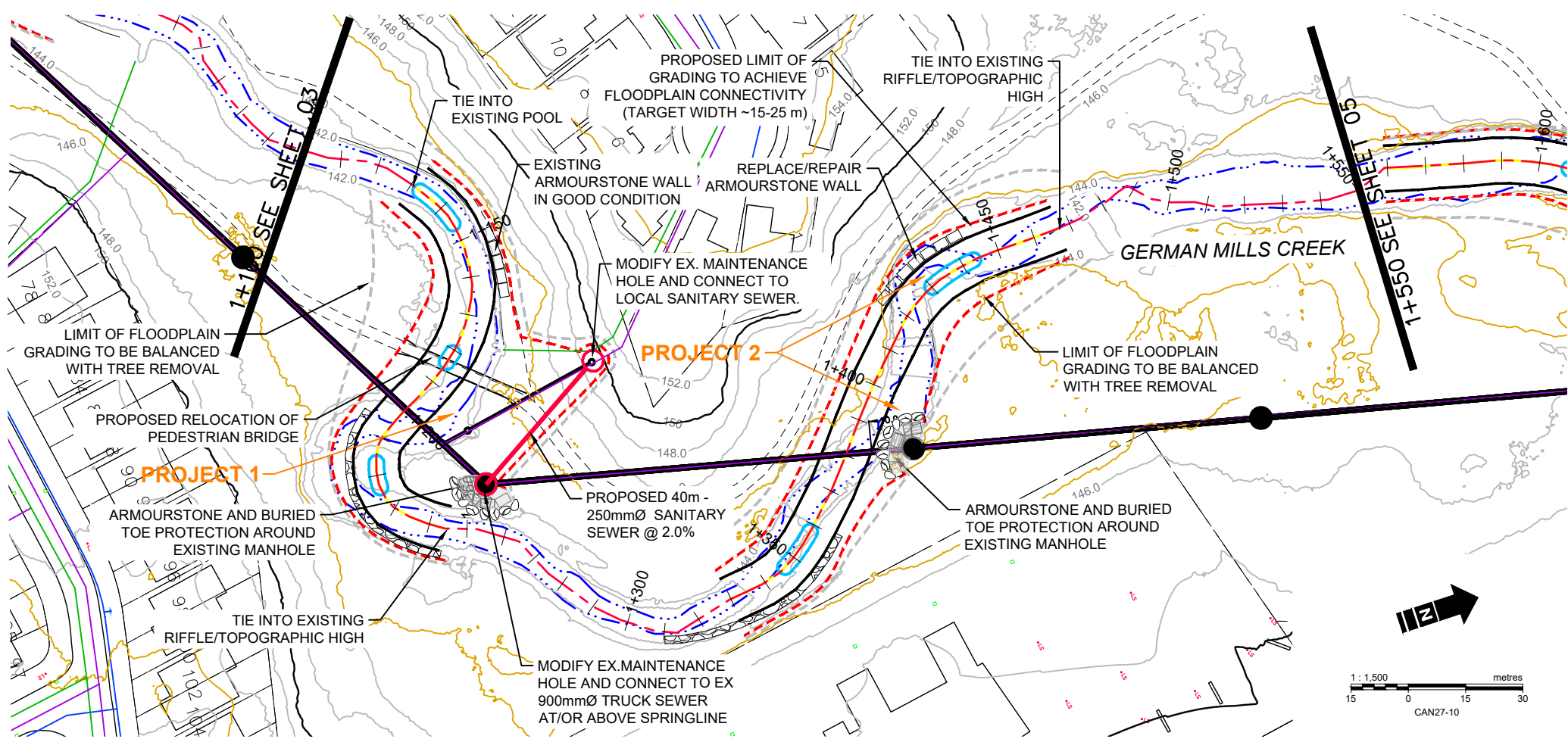


CITY OF TORONTO
GERMAN MILLS GSMP EA

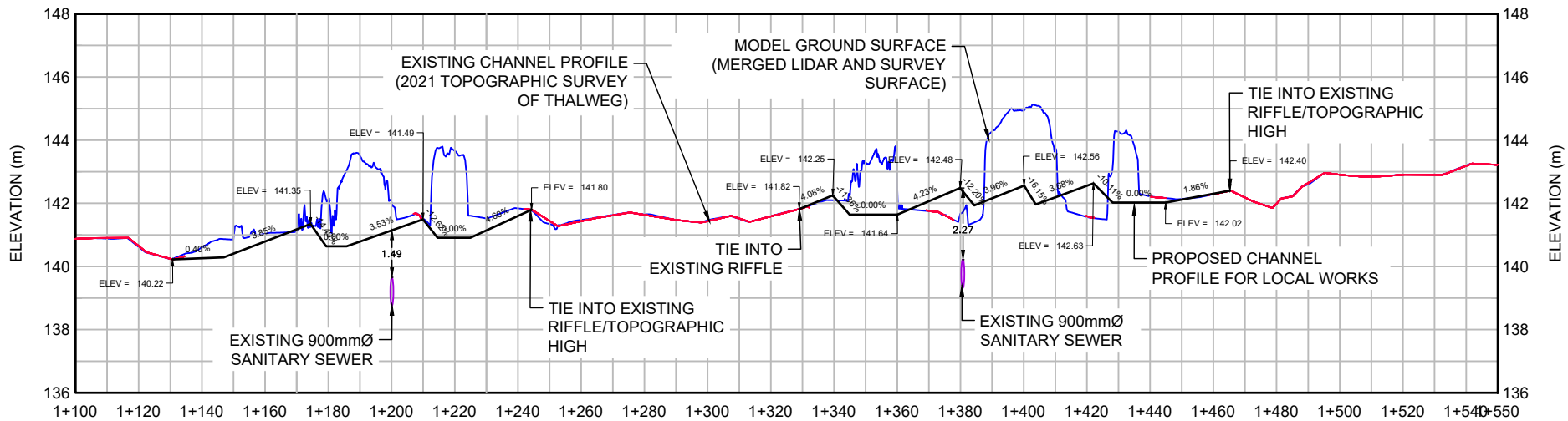
ALTERNATIVE 2 - LOCAL WORKS
STA. 0+850 TO 1+270

DATE:	APRIL 2022	TECHNICAL:	N. CYPLES	REVIEWER:	R. PHILLIPS	DRAWN:	K. WEILER
PROJECT:	32227-504	REVISION:	A	DRAWING:	F1j		

Disclaimer: The information contained herein may be compiled from numerous third party materials that are subject to periodic change without prior notification. While every effort has been made by Matrix Solutions Inc. to ensure the accuracy of the information presented at the time of publication, Matrix Solutions Inc. assumes no liability for any errors, omissions, or inaccuracies in the third party material.

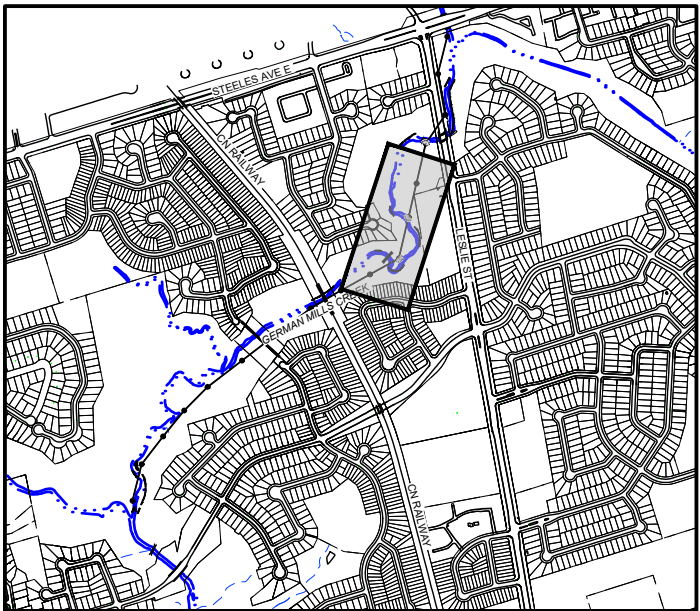


PLAN
SCALE 1:1500



PROFILE
HORIZONTAL SCALE 1:2000
VERTICAL SCALE 1:200

- REFERENCE:
1. BASE MAP TOPOGRAPHY COMPILED FROM CITY OF TORONTO OPEN SOURCE DATA, TWAG SERVICING DATA AND DRF15170_TOPO2D.
 2. MAPPED CREEK ALIGNMENT ON PLAN FROM 2018 ORTHOPHOTOGRAPHY DIGITIZED BY MATRIX SOLUTIONS.
 3. TOPOGRAPHIC SURFACE BASED ON 2015 LIDAR DIGITAL ELEVATION MODEL (OPEN SOURCE) COMBINED WITH TOPOGRAPHIC AND CHANNEL PROFILE SURVEY BY MATRIX SOLUTIONS JULY TO SEPTEMBER 2021.
 4. EXISTING SANITARY SEWER ALIGNMENT AND PROFILE BY WOOD ENVIRONMENTAL & INFRASTRUCTURE SOLUTIONS (S. PACKER, P.ENG.) FROM CIVIL 3D DRAWING FILE RECEIVED NOVEMBER 26, 2021, WITH REFERENCE TO SELECT SEWER AND MAINTENANCE HOLE SURVEYS COMPLETED BY MATRIX SOLUTIONS IN 2021.
 5. COORDINATE SYSTEM ONTARIO MTM ZONE 10 NAD27.



KEY MAP
NOT TO SCALE

LEGEND	
---	LOT LINE
---	RIVER SHORELINE
---	THALWEG
---	TRAIL
---	EXISTING CONTOUR (2m INTERVAL)
---	SANITARY SEWER
---	STORM SEWER
---	WATERMAIN
---	SANITARY SEWER
●	MAINTENANCE HOLE
---	CHANNEL REALIGNMENT
---	CHANNEL BANK
---	MINIMUM GRADING LIMIT
---	MAXIMUM GRADING LIMIT
---	EXISTING ARMOURSTONE
---	PROPOSED BANK AND TOE RESTORATION WITH EXPOSED ARMOURSTONE
---	PROPOSED BANK AND TOE RESTORATION WITH BURIED ARMOURSTONE
---	PROPOSED BANK RESTORATION AND BIOENGINEERING
---	RIFFLE
---	POOL

REVISION					
B	2023-01-30	ISSUE FOR REVIEW		NC	RP
A	2022-06-23	ISSUE FOR REVIEW		NC	RP
No.	DATE	DESCRIPTION	BY	CHK.	DRN.

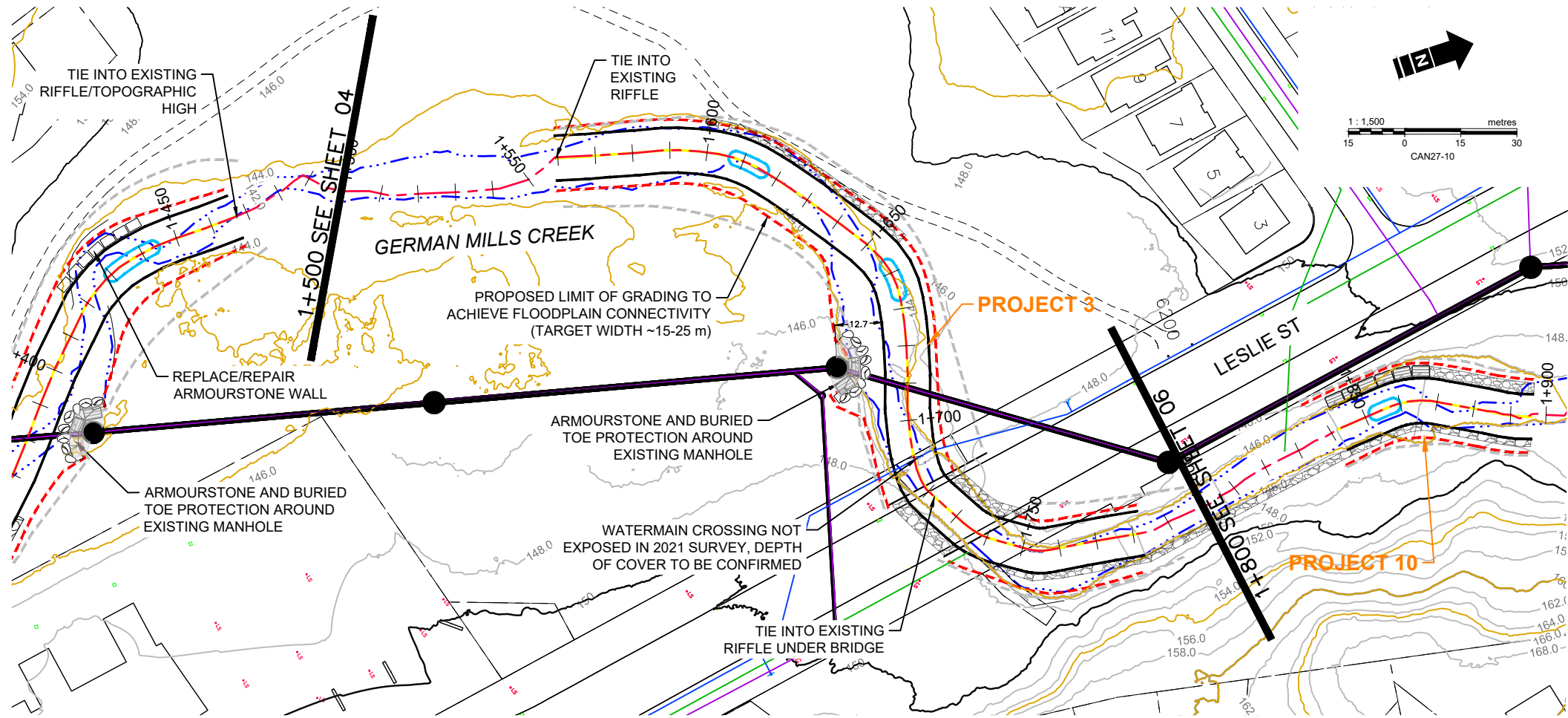


CITY OF TORONTO
GERMAN MILLS GSMP EA

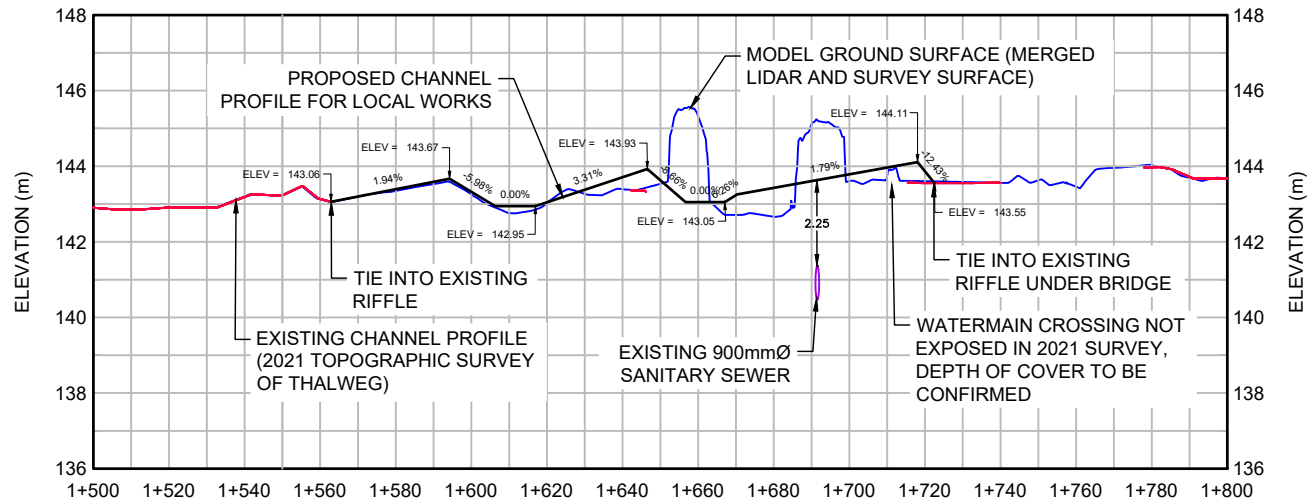
ALTERNATIVE 2 - LOCAL WORKS
STA. 1+100 TO 1+550

DATE:	APRIL 2022	TECHNICAL:	N. CYPLES	REVIEWER:	R. PHILLIPS	DRAWN:	K. WEILER
PROJECT:	32227-504	REVISION:	A	DRAWING:	F1k		

Disclaimer: The information contained herein may be compiled from numerous third party materials that are subject to periodic change without prior notification. While every effort has been made by Matrix Solutions Inc. to ensure the accuracy of the information presented at the time of publication, Matrix Solutions Inc. assumes no liability for any errors, omissions, or inaccuracies in the third party material.

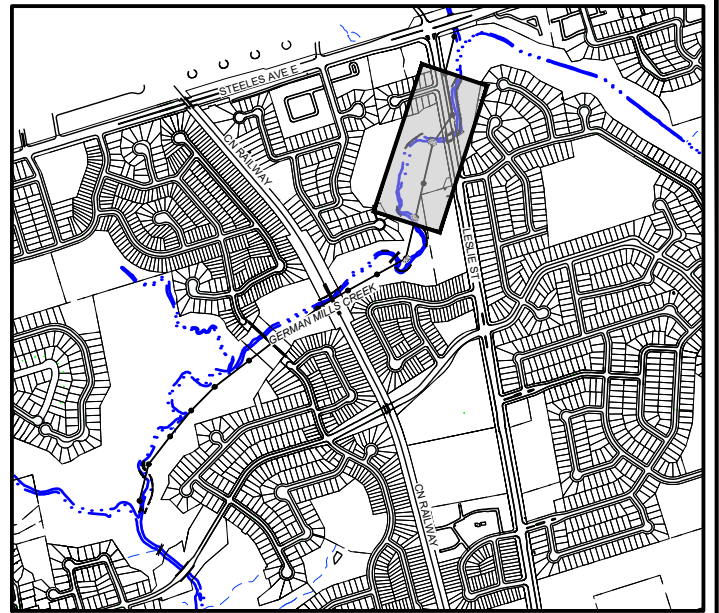


PLAN
SCALE 1:1500



PROFILE
HORIZONTAL SCALE 1:2000
VERTICAL SCALE 1:200

- REFERENCE:
1. BASE MAP TOPOGRAPHY COMPILED FROM CITY OF TORONTO OPEN SOURCE DATA, TWAG SERVICING DATA AND DRF15170_TOPO2D.
 2. MAPPED CREEK ALIGNMENT ON PLAN FROM 2018 ORTHOPHOTOGRAPHY DIGITIZED BY MATRIX SOLUTIONS.
 3. TOPOGRAPHIC SURFACE BASED ON 2015 LIDAR DIGITAL ELEVATION MODEL (OPEN SOURCE) COMBINED WITH TOPOGRAPHIC AND CHANNEL PROFILE SURVEY BY MATRIX SOLUTIONS JULY TO SEPTEMBER 2021.
 4. EXISTING SANITARY SEWER ALIGNMENT AND PROFILE BY WOOD ENVIRONMENTAL & INFRASTRUCTURE SOLUTIONS (S. PACKER, P.ENG.) FROM CIVIL 3D DRAWING FILE RECEIVED NOVEMBER 26, 2021, WITH REFERENCE TO SELECT SEWER AND MAINTENANCE HOLE SURVEYS COMPLETED BY MATRIX SOLUTIONS IN 2021.
 5. COORDINATE SYSTEM ONTARIO MTM ZONE 10 NAD27.



KEY MAP
NOT TO SCALE

LEGEND	
	LOT LINE
	RIVER SHORELINE
	THALWEG
	TRAIL
	EXISTING CONTOUR (2m INTERVAL)
	SANITARY SEWER
	STORM SEWER
	WATERMAIN
	SANITARY SEWER
	MAINTENANCE HOLE
	CHANNEL REALIGNMENT
	CHANNEL BANK
	MINIMUM GRADING LIMIT
	MAXIMUM GRADING LIMIT
	EXISTING ARMOURSTONE
	PROPOSED BANK AND TOE RESTORATION WITH EXPOSED ARMOURSTONE
	PROPOSED BANK AND TOE RESTORATION WITH BURIED ARMOURSTONE
	PROPOSED BANK RESTORATION AND BIOENGINEERING
	RIFFLE
	POOL

REVISION					
B	2023-01-30	ISSUE FOR REVIEW		NC	RP
A	2022-06-23	ISSUE FOR REVIEW		NC	RP
No.	DATE	DESCRIPTION	BY	CHK.	DRN.

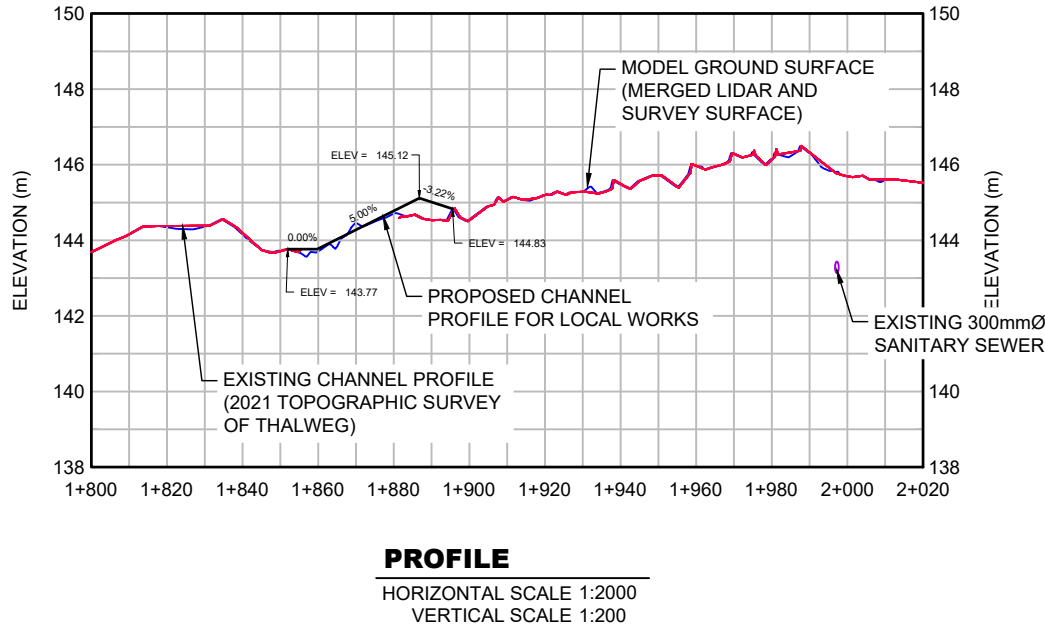
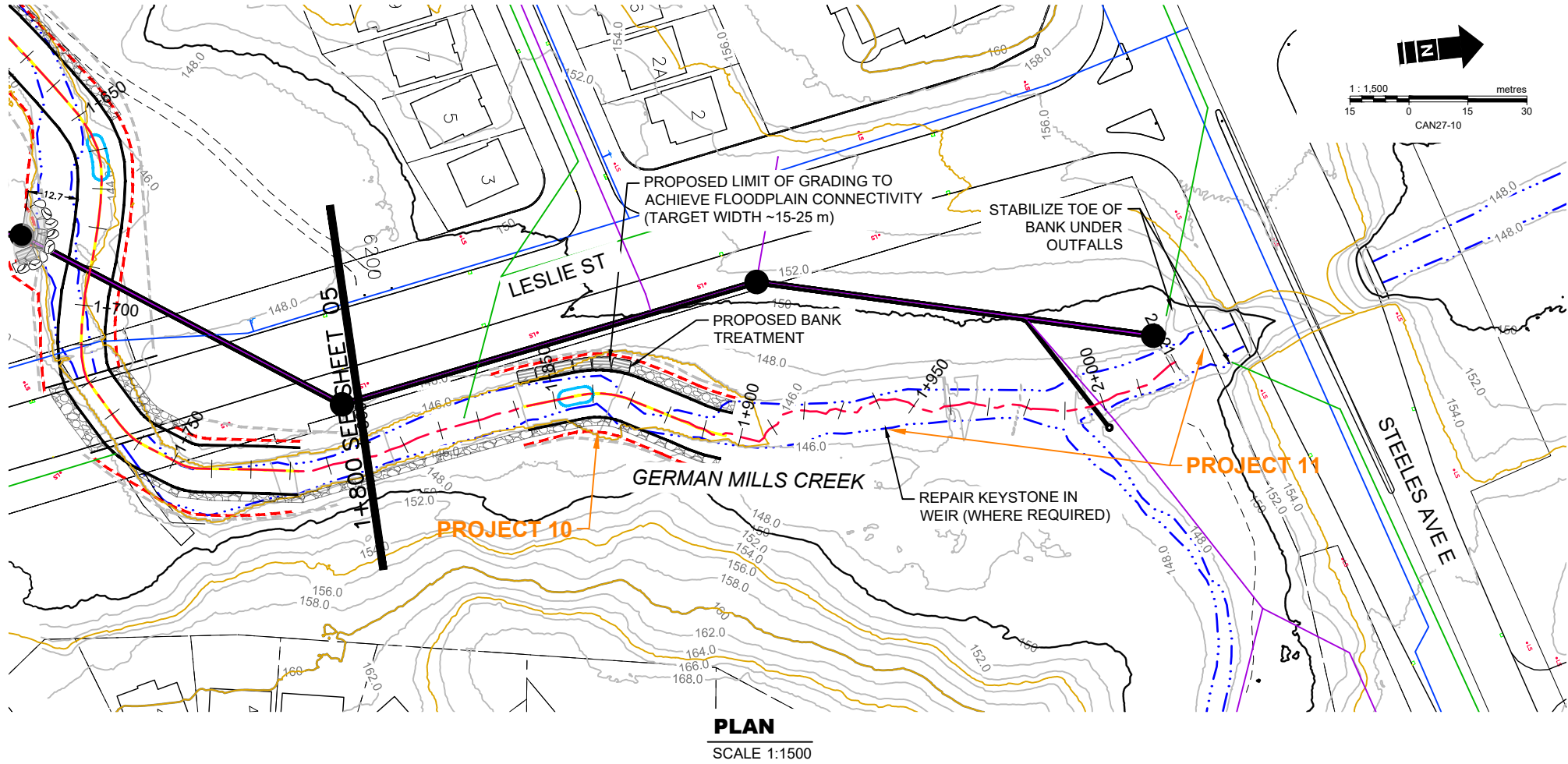


CITY OF TORONTO
GERMAN MILLS GSMP EA

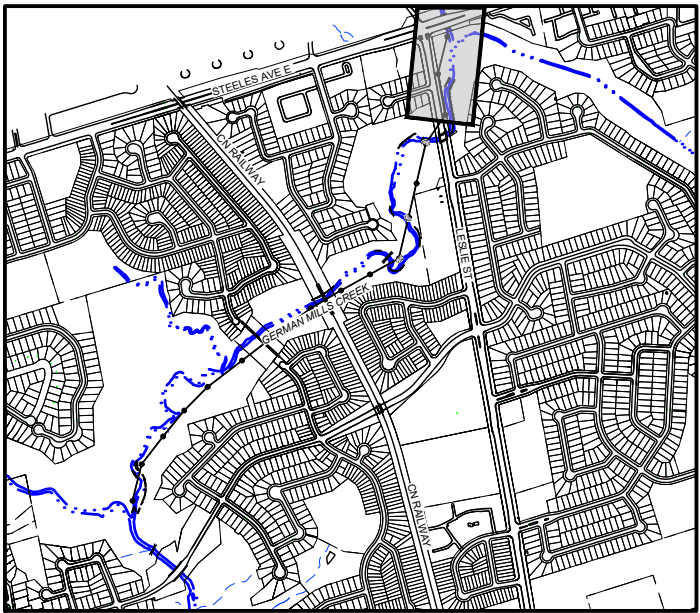
ALTERNATIVE 2 - LOCAL WORKS
STA. 1+500 TO 1+800

DATE:	APRIL 2022	TECHNICAL:	N. CYPLES	REVIEWER:	R. PHILLIPS	DRAWN:	K. WEILER
PROJECT:	32227-504	REVISION:	A	DRAWING:	F11		

Disclaimer: The information contained herein may be compiled from numerous third party materials that are subject to periodic change without prior notification. While every effort has been made by Matrix Solutions Inc. to ensure the accuracy of the information presented at the time of publication, Matrix Solutions Inc. assumes no liability for any errors, omissions, or inaccuracies in the third party material.



- REFERENCE:
1. BASE MAP TOPOGRAPHY COMPILED FROM CITY OF TORONTO OPEN SOURCE DATA, TWAG SERVICING DATA AND DRF15170_TOPO2D.
 2. MAPPED CREEK ALIGNMENT ON PLAN FROM 2018 ORTHOPHOTOGRAPHY DIGITIZED BY MATRIX SOLUTIONS.
 3. TOPOGRAPHIC SURFACE BASED ON 2015 LIDAR DIGITAL ELEVATION MODEL (OPEN SOURCE) COMBINED WITH TOPOGRAPHIC AND CHANNEL PROFILE SURVEY BY MATRIX SOLUTIONS JULY TO SEPTEMBER 2021.
 4. EXISTING SANITARY SEWER ALIGNMENT AND PROFILE BY WOOD ENVIRONMENTAL & INFRASTRUCTURE SOLUTIONS (S. PACKER, P.ENG.) FROM CIVIL 3D DRAWING FILE RECEIVED NOVEMBER 26, 2021, WITH REFERENCE TO SELECT SEWER AND MAINTENANCE HOLE SURVEYS COMPLETED BY MATRIX SOLUTIONS IN 2021.
 5. COORDINATE SYSTEM ONTARIO MTM ZONE 10 NAD27.



KEY MAP
NOT TO SCALE

LEGEND	
--- LOT LINE	CHANNEL REALIGNMENT
--- RIVER SHORELINE	CHANNEL BANK
--- THALWEG	MINIMUM GRADING LIMIT
--- TRAIL	MAXIMUM GRADING LIMIT
--- EXISTING CONTOUR (2m INTERVAL)	EXISTING ARMOURSTONE
--- SANITARY SEWER	PROPOSED BANK AND TOE RESTORATION WITH EXPOSED ARMOURSTONE
--- STORM SEWER	PROPOSED BANK AND TOE RESTORATION WITH BURIED ARMOURSTONE
--- WATERMAIN	PROPOSED BANK RESTORATION AND BIOENGINEERING
--- SANITARY SEWER	RIFFLE
● MAINTENANCE HOLE	POOL

REVISION					
B	2023-01-30	ISSUE FOR REVIEW		NC	RP KW
A	2022-06-23	ISSUE FOR REVIEW		NC	RP KW
No.	DATE	DESCRIPTION	BY	CHK.	DRN.

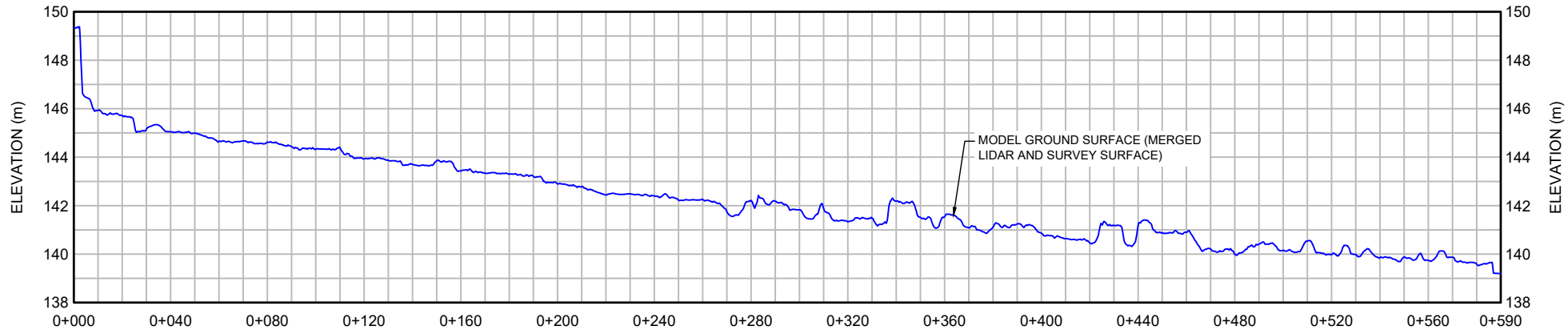
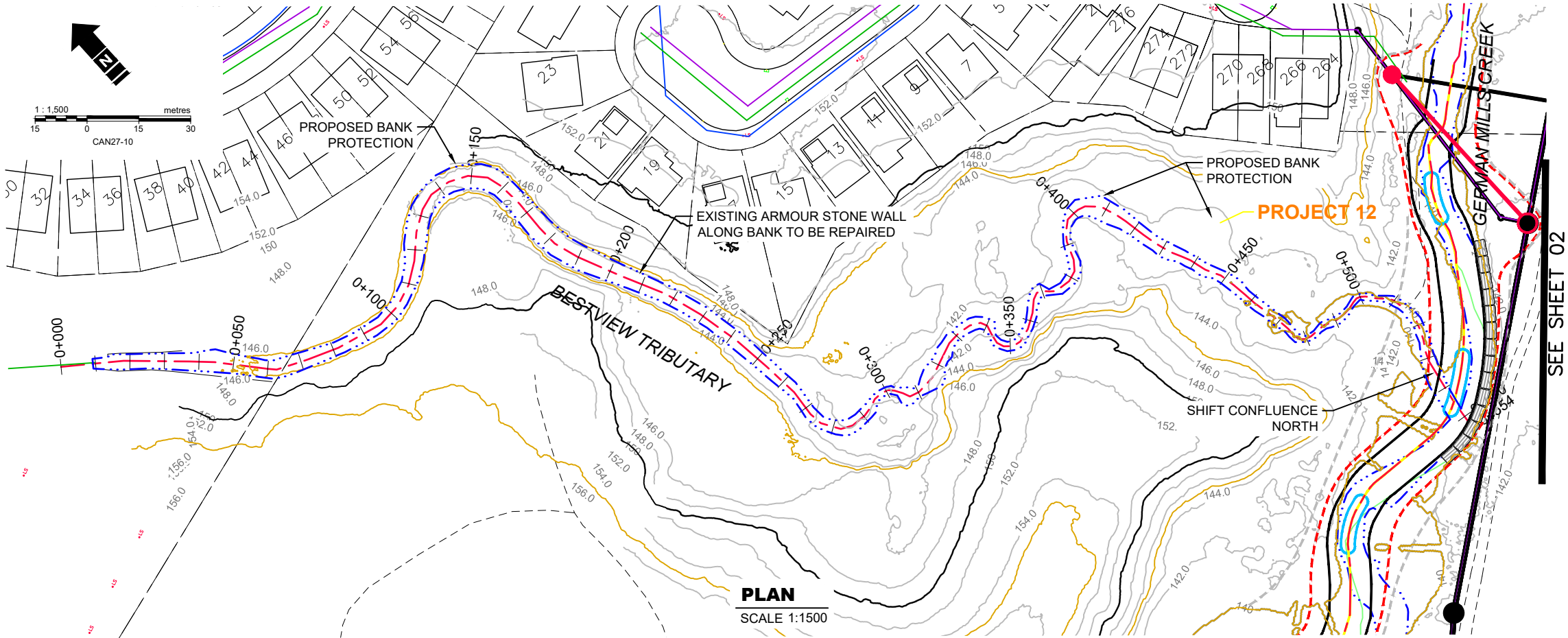


CITY OF TORONTO
GERMAN MILLS GSMP EA

ALTERNATIVE 2 - LOCAL WORKS
STA. 1+800 TO 2+020

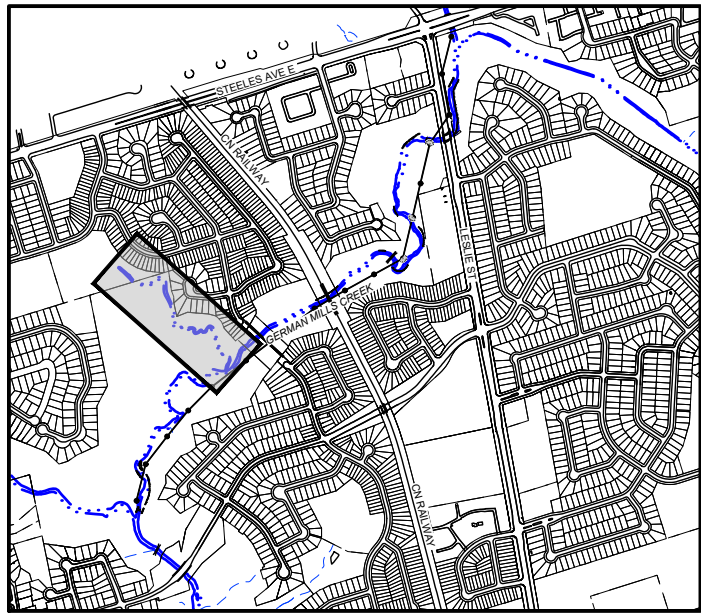
DATE:	APRIL 2022	TECHNICAL:	N. CYPLES	REVIEWER:	R. PHILLIPS	DRAWN:	K. WEILER
PROJECT:	32227-504	REVISION:	A	DRAWING:	F1m		

Disclaimer: The information contained herein may be compiled from numerous third party materials that are subject to periodic change without prior notification. While every effort has been made by Matrix Solutions Inc. to ensure the accuracy of the information presented at the time of publication, Matrix Solutions Inc. assumes no liability for any errors, omissions, or inaccuracies in the third party material.



PROFILE
HORIZONTAL SCALE 1:2500
VERTICAL SCALE 1:250

- REFERENCE:
1. BASE MAP TOPOGRAPHY COMPILED FROM CITY OF TORONTO OPEN SOURCE DATA, TWAG SERVICING DATA AND DRF15170_TOPO2D.
 2. MAPPED CREEK ALIGNMENT ON PLAN FROM 2018 ORTHOPHOTOGRAPHY DIGITIZED BY MATRIX SOLUTIONS.
 3. TOPOGRAPHIC SURFACE BASED ON 2015 LIDAR DIGITAL ELEVATION MODEL (OPEN SOURCE) COMBINED WITH TOPOGRAPHIC AND CHANNEL PROFILE SURVEY BY MATRIX SOLUTIONS JULY TO SEPTEMBER 2021.
 4. EXISTING SANITARY SEWER ALIGNMENT AND PROFILE BY WOOD ENVIRONMENTAL & INFRASTRUCTURE SOLUTIONS (S. PACKER, P.ENG.) FROM CIVIL 3D DRAWING FILE RECEIVED NOVEMBER 26, 2021, WITH REFERENCE TO SELECT SEWER AND MAINTENANCE HOLE SURVEYS COMPLETED BY MATRIX SOLUTIONS IN 2021.
 5. COORDINATE SYSTEM ONTARIO MTM ZONE 10 NAD27.



KEY MAP
NOT TO SCALE

LEGEND	
--- LOT LINE	CHANNEL REALIGNMENT
--- RIVER SHORELINE	CHANNEL BANK
--- THALWEG	MINIMUM GRADING LIMIT
--- TRAIL	MAXIMUM GRADING LIMIT
--- EXISTING CONTOUR (2m INTERVAL)	EXISTING ARMOURSTONE
--- SANITARY SEWER	PROPOSED BANK AND TOE RESTORATION WITH EXPOSED ARMOURSTONE
--- STORM SEWER	PROPOSED BANK AND TOE RESTORATION WITH BURIED ARMOURSTONE
--- WATERMAIN	PROPOSED BANK RESTORATION AND BIOENGINEERING
--- SANITARY SEWER	RIFFLE
● MAINTENANCE HOLE	POOL

REVISION					
B	2023-01-30	ISSUE FOR REVIEW		NC	RP KW
A	2022-06-23	ISSUE FOR REVIEW		NC	RP KW
No.	DATE	DESCRIPTION	BY	CHK.	DRN.



CITY OF TORONTO
GERMAN MILLS GSMP EA

**ALTERNATIVE 2 - LOCAL WORKS
STA. 0+000 TO 0+610**

DATE: APRIL 2022	TECHNICAL: N. CYPLES	REVIEWER: R. PHILLIPS	DRAWN: K. WEILER
PROJECT: 32227-504	REVISION: A	DRAWING: F1n	
<small>Disclaimer: The information contained herein may be compiled from numerous third party materials that are subject to periodic change without prior notification. While every effort has been made by Matrix Solutions Inc. to ensure the accuracy of the information presented at the time of publication, Matrix Solutions Inc. assumes no liability for any errors, omissions, or inaccuracies in the third party material.</small>			