



Ramsden Park Community Recreation Centre

Public Kick-Off Meeting
March 24, 2025

Land Acknowledgement

African Ancestral Acknowledgement



Agenda

1. Welcoming Remarks
2. Presentation: Community Design Process
3. Presentation: CRC Site & Context
4. Q&A and Plenary Discussion
4. Breakout Session: Found Objects Workshop
5. Report-Back: Emerging Themes
6. Wrap-Up and Next Steps

- Provide **clarity**.
- Facilitate a **fair**, unbiased process.
- Create **momentum**.
- Ensure everyone feels **heard**.
- Make this a **productive** conversation.

Meeting Code of Conduct

As a meeting attendee, you agree to:

- Approach conversations with **curiosity** and a **willingness to learn** from others.
- Be an **active listener** and keep an **open mind** by valuing a diversity of views and opinions.
- Treat all participants with **kindness and respect**, recognizing that all voices are valuable.
- **Critique ideas**, not individuals.
- **Avoid language or behaviours** that could be considered rude, offensive, or discriminatory (e.g. cursing and derogatory terms).

To maintain a respectful and inclusive environment, offensive and discriminatory comments **are not permitted**. Participants engaging in such behaviour may be asked to leave.



Meet the Project Team

City of Toronto

- **Howie Dayton**
General Manager
Parks & Recreation
- **Prapan Dave**
Director
Capital Design & Delivery, P&R
- **Annely Zonena**
Acting Director
Strategic Project Implementation
& Community Engagement, P&R
- **David Driedger**
Manager, Central Section
Community Planning
- **Daniel Fusca**
Manager
Community Engagement, P&R
- **Katy Aminian**
Acting Program Manager,
Capital Projects Design & Delivery, P&R
- **Ashley Wilson**
Project Manager,
Capital Projects Design & Delivery, P&R
- **Christie Pearson**
Senior Project Coordinator
Capital Projects Design & Delivery, P&R
- **Joshua Bowman**
Senior Public Consultation Coordinator
Community Engagement, P&R
- **Stella Zhou**
Public Consultation Coordinator
Community Engagement, P&R

Meet the Project Team

Your Local Councillor

- Dr. Dianne Saxe
City Councillor
Ward 10, University-Rosedale
- Sydney Hoiseth
Constituency Assistant

Toronto Metropolitan University

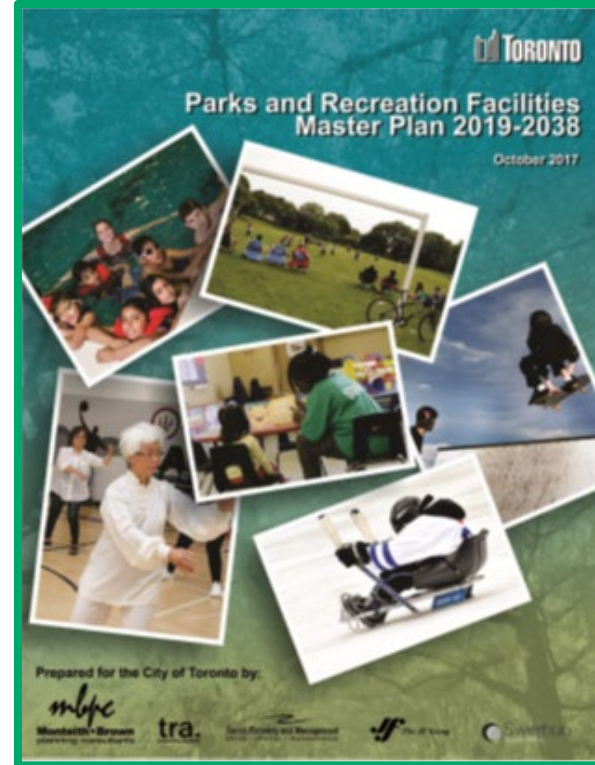
We are pleased to be joined by 14 students from Toronto Metropolitan University who will be assisting with facilitating group discussions this evening.



City Councillor Dianne Saxe

Ramsden Park Community Recreation Centre

- The Ramsden Park Community Recreation Centre (CRC) was identified as a priority in the *Parks and Recreation Facilities Plan (2019-2038)* and *TOcore* to address service gap in downtown north and growing demand for recreation facilities.
- The new CRC will be built at 1010 Yonge Street, west of Rosedale Subway Station, near Belmont Avenue.
- This City-owned site was selected based on the 2021 Facility Fit Feasibility Study, ensuring sufficient space for the facility.
- The location offers high visibility, accessibility, and transit connectivity while addressing the service gap outlined in the Facilities Plan and the 2020 Aquatics Service Area and Utilization Analysis.



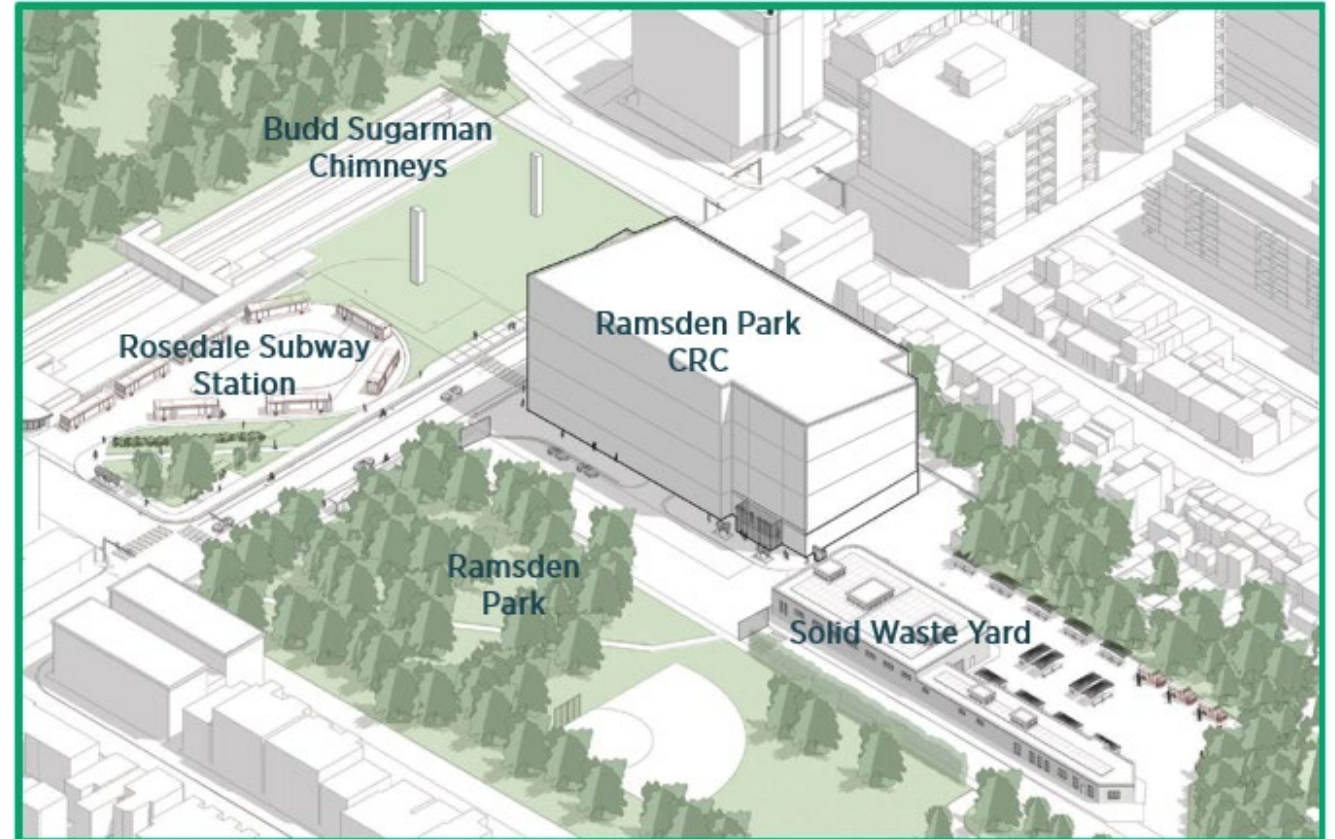
The Parks and Recreation Facilities Plan 2019-2038 identified the following areas in the City that would require new Community Recreation Centres (CRC) to serve long-term population growth (based on pre-2018 amalgamation wards):

- Downsview (previously Ward 8, 9, 10)
- **Downtown North (previously Wards 20, 22, 27) - New Ramsden Park CRC site**
- East Bayfront (previously Ward 28)
- Port Lands (previously Ward 30)

Ramsden Park Community Recreation Centre

The New Ramsden Park CRC is an opportunity to:

- Increase recreation service in a community that has grown by more than 18% since 2018.
- Work directly with the local community, across the ward and beyond, to consistently understand issues, concerns, and aspirations.
- Create a new gathering space in University-Rosedale
- Bring world-class design to the neighbourhood
- Explore innovative solutions for sustainability and resiliency



The Opportunity

The new CRC will be a 75,000 square foot facility, one of the largest in the City. A CRC of this size aims to serve a 2.5-kilometre radius, according to Toronto's *Facilities Plan*. The design of the CRC will be determined with the help of community feedback during the community engagement process.

The CRC will be an accessible, net zero emissions building with the following anchor components:

- A 25 metre, six lane pool
- Warm leisure pool
- Gymnasium and running track

The new Ramsden CRC can potentially include:

- Fitness and dance studio
- Community kitchen
- Youth spaces
- Weight and conditioning room
- And more!



Site Selection and Limitations

The Ramsden Park Community Recreation Centre (CRC) was identified as a priority in the Parks and Recreation Facilities Master Plan (2019-2038) and TOcore to address service gap in downtown north and growing demand for recreation facilities.

Site selection criteria:

- Proximity to population and comparable facilities
- Site suitability, visibility, development costs
- Compatibility with other uses
- Accessibility by road, transit and active transportation
- Ownership and zoning
- Opportunity cost and efficiency
- Potential expansion through connection to outdoor amenities

Constraints:

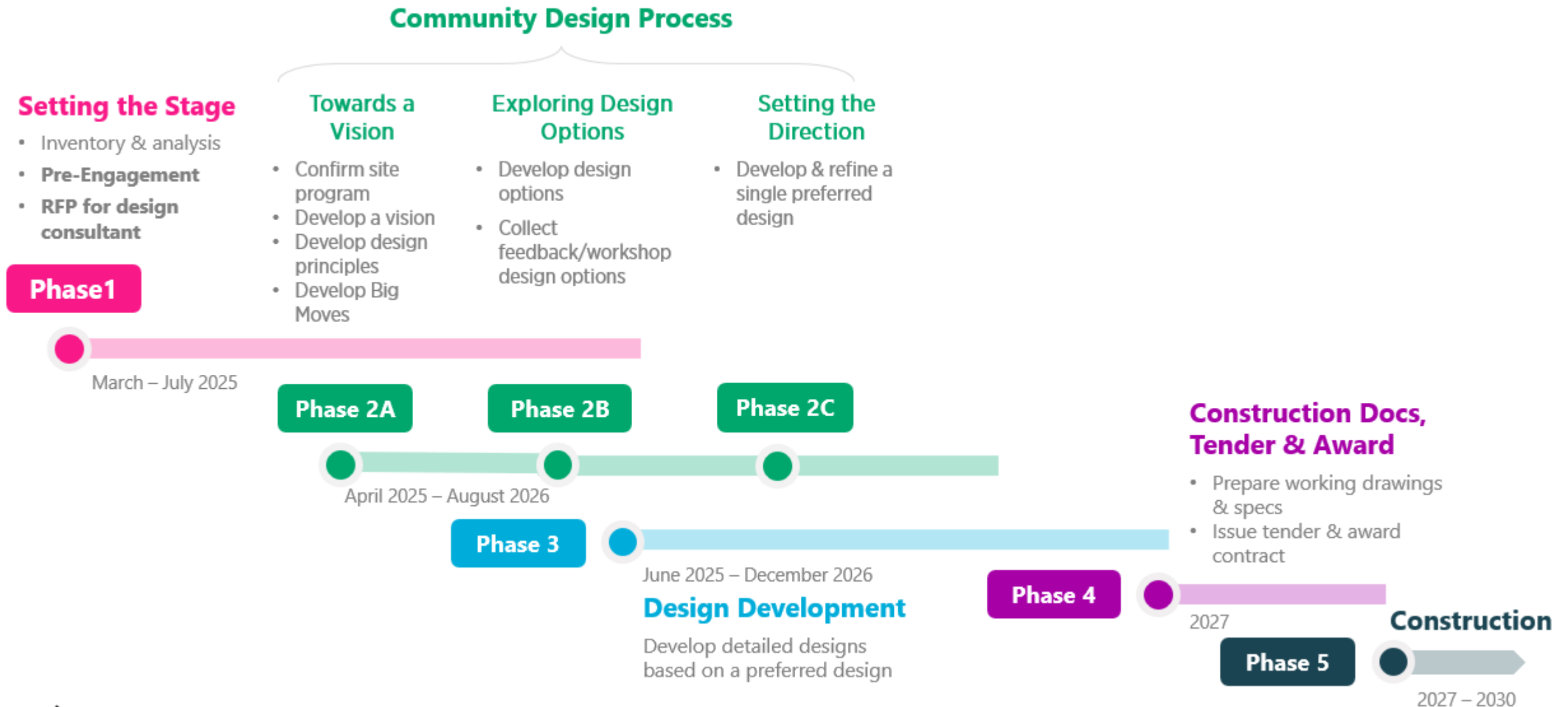
- 1900 SM area tight for facilities fit
- opportunity for co-location is severely restricted

As part of the long-term research strategy City Council has directed a review of co-locating housing and recreation facilities.

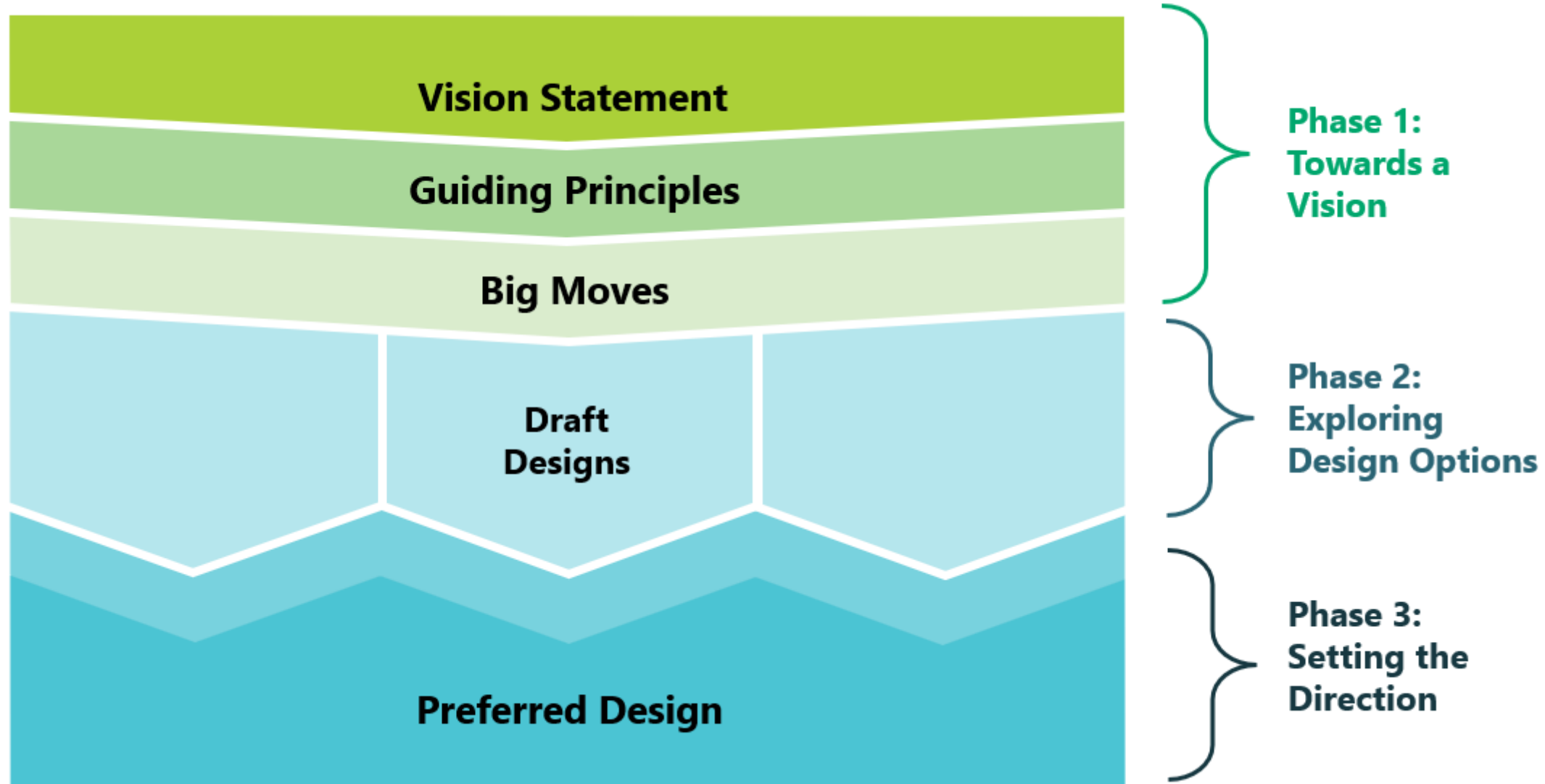
Parks & Recreation supports the development of co-location projects and actively pursues those opportunities on other sites.



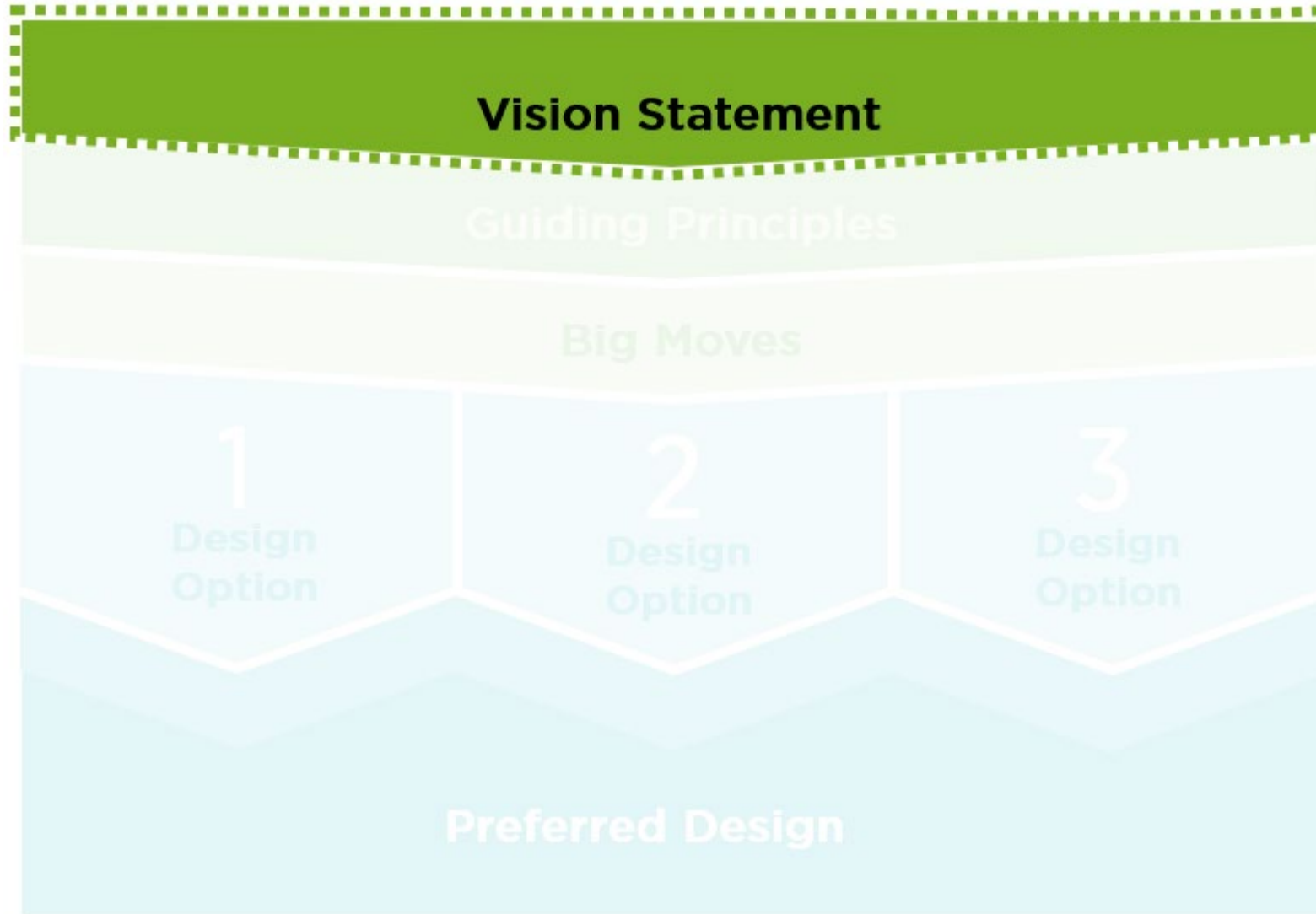
Overall Process Timeline



Community Design Framework



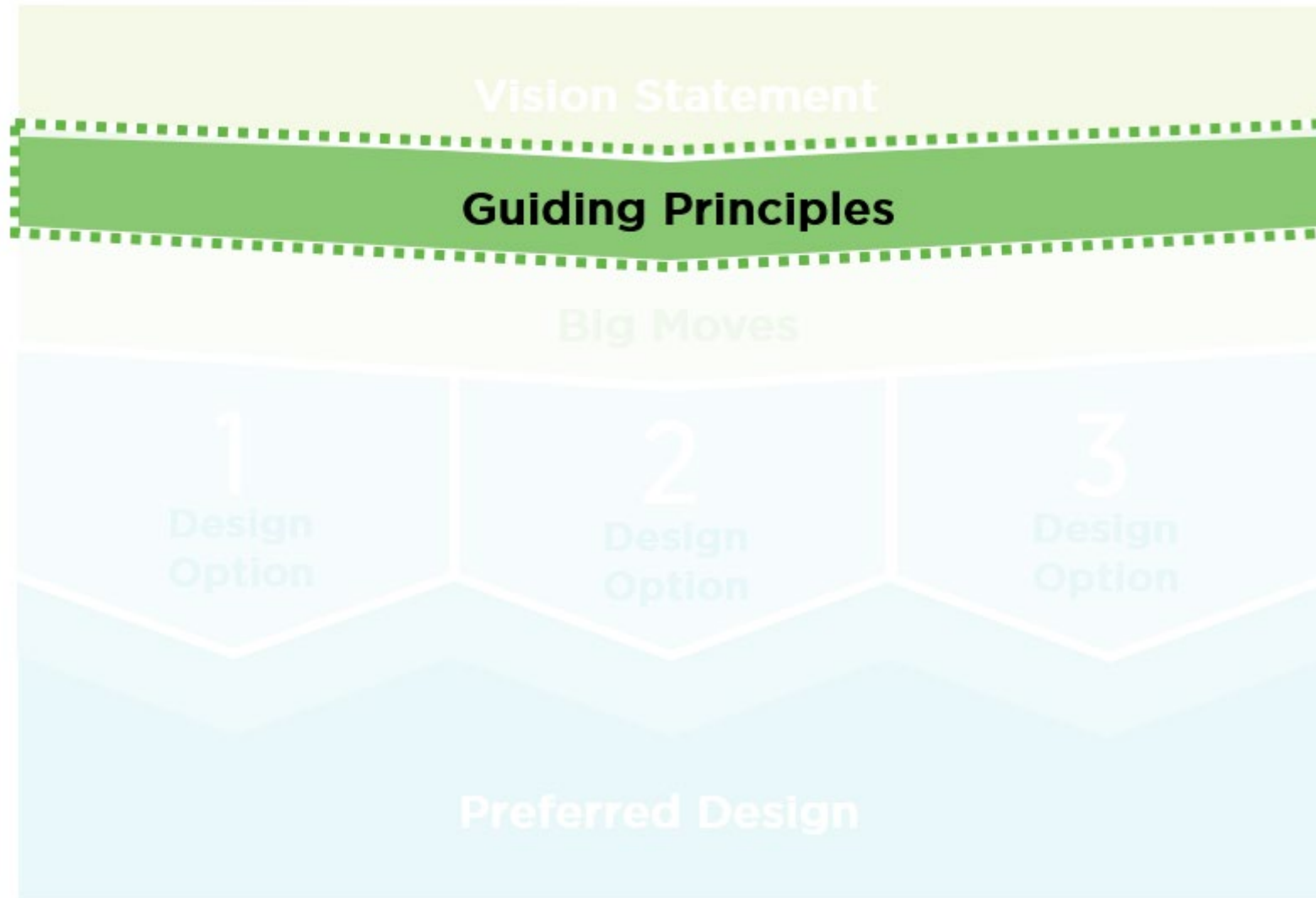
Ramsden Park CRC Design Framework



What are we trying to achieve?

The vision is co-created with the community to describe the ideal future facility. It is a big-picture statement that should inspire everyone toward a common understanding of the project's overall goals and objectives.

Ramsden Park CRC Design Framework



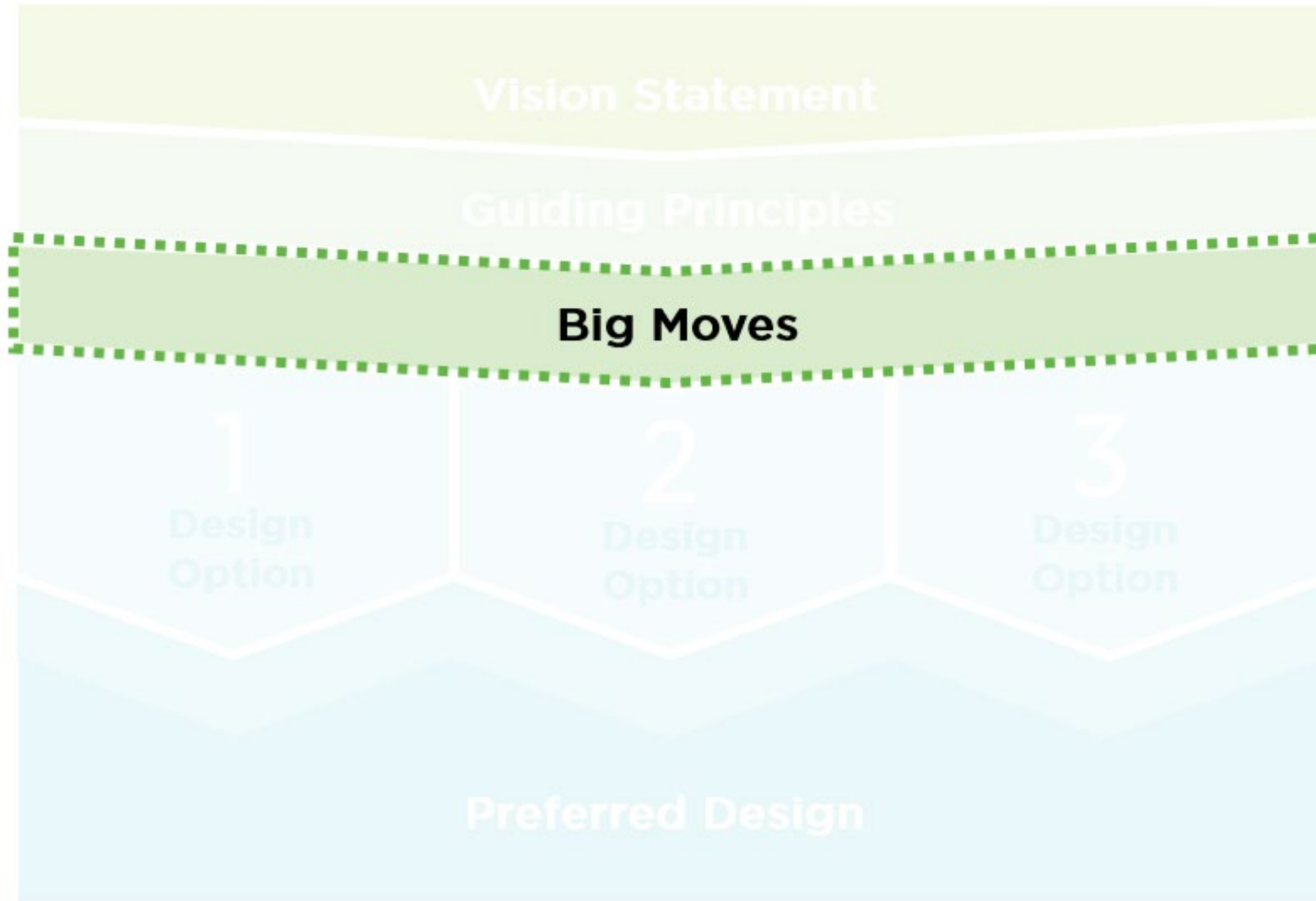
What is important to us?

The guiding principles are high-level directions that reflect the community's most important values and ideas for how the facility should look and feel. They help to clarify the vision statement and guide how the CRC should be designed by describing desired outcomes.

Example Guiding Principle:

Create a modern space that incorporates natural light and materials throughout the building and includes local and Indigenous art to help beautify the space and showcase works from local artists.

Ramsden Park CRC Design Framework



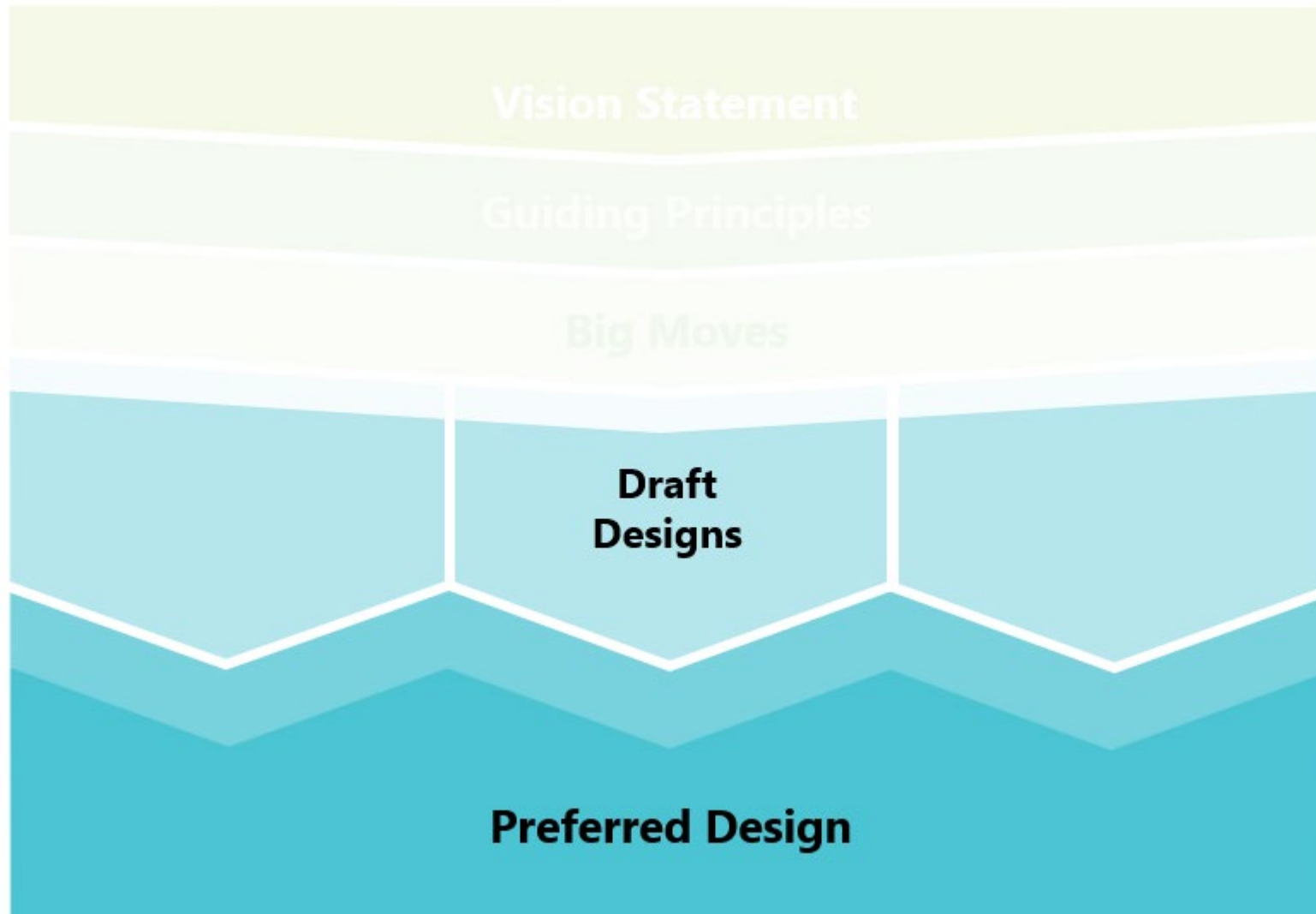
How do we get it?

The big moves communicate the main priorities of both the community and the City for the design of the future CRC. They are specific requirements related to how the CRC design can achieve the vision and guiding principles.

Example Big Move:

Provide indoor and outdoor gathering spaces for community meetings, events and celebrations.

Ramsden Park CRC Design Framework



What it will look like

The vision statement, design principles, and big moves are used as inputs into the development of draft building designs. These are presented to the community in Phase 2 of the community design process and refined into a preferred design, which is shared in Phase 3.

Community Advisory Committee

A **Community Advisory Committee (CAC)** is an important part of the community engagement process. It will act as an advisory body that will help advance the design of the new CRC at key moments in each phase of community design process, ensuring the perspective and needs of the surrounding community are reflected in the overall design. The CAC will review, deliberate, and discuss key project elements.

CACs are representative of the demographics of the overall community within the CRC catchment area. Participants volunteer by filling out a survey and members are selected randomly from applications. Key local stakeholders including community organizations are sent invitations directly. Everyone is encouraged to apply, and the final make up will be based on demographics and equitable representation, reflecting City practice and Council-approved policies.

The benefits of Community Advisory Committees include:

- **Community Stewardship:** CACs ensure that key stakeholders are given opportunities to consistently weigh in on the project throughout the design process.
- **Thoughtful Deliberation:** Selected members receive balanced information, take time to learn, and openly discuss ideas to develop common ground using a consensus-based approach.
- **Equitable Participation:** Honoraria is provided for participants to ensure there is equitable access to participate in meetings.



Visit the web page and apply for the CAC!

toronto.ca/RamsdenCRC

Spotlight on tools: Civic Lotteries

What: A **civic lottery** is a tool used to ensure more equitable engagement on significant Involve and Collaborate-level projects

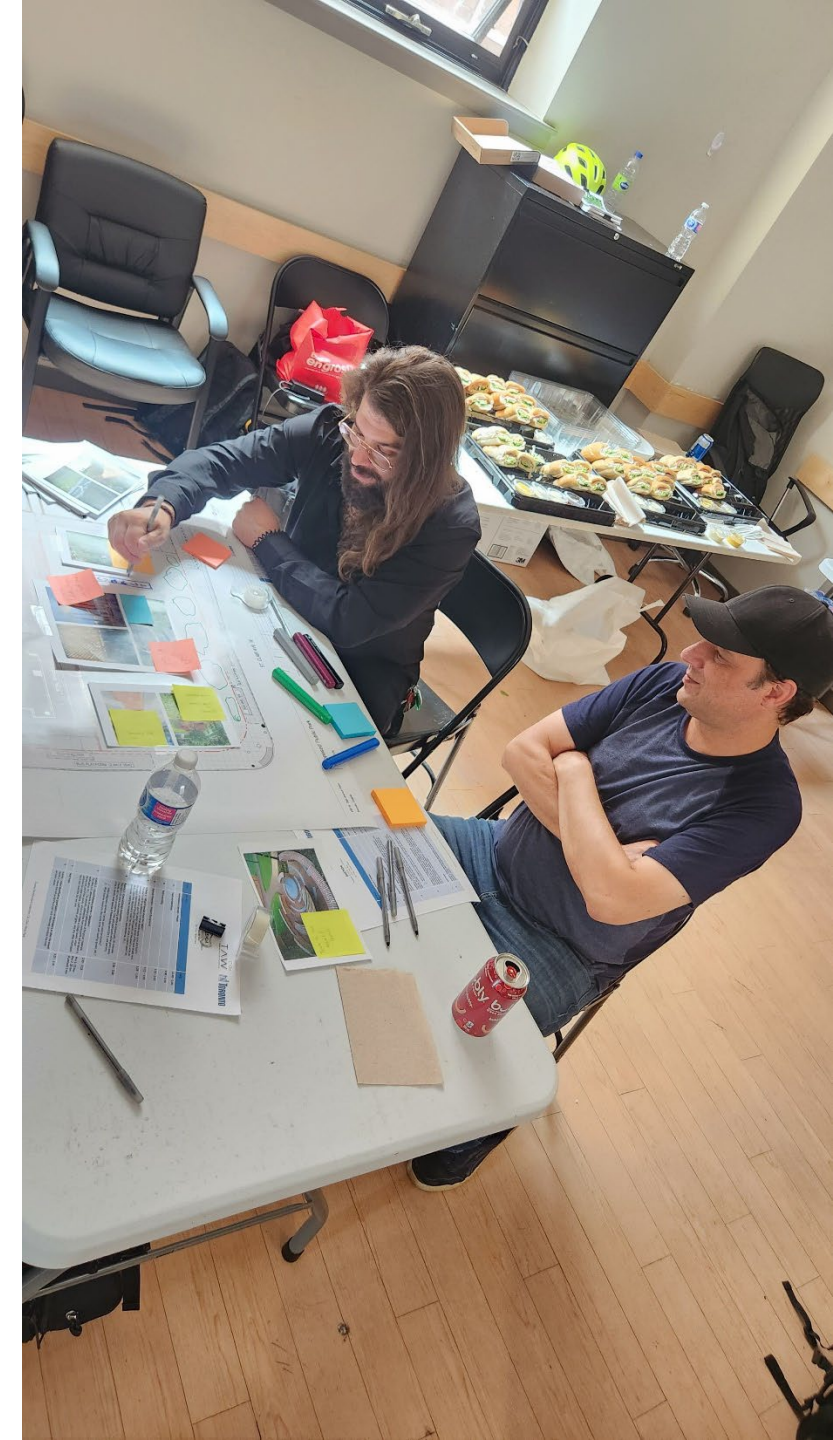
Why: Civic lotteries are used to select resident participants for Community Advisory Committees that are representative of the demographics of the overall community. Invited representatives of local community groups are also included. The benefits of civic lotteries include:

- **Reduced bias:** Unlike traditional public meetings, where participation skews toward the most vocal or engaged groups, civic lotteries ensure a broader and more representative cross-section of society.
- **Enhanced legitimacy:** Participants reflect the true diversity of a community, giving decisions more credibility.

How: Resident participants volunteer by filling out a survey and members are selected randomly from volunteer applications, controlling for pre-determined demographics (i.e. age, gender, ethnicity, housing tenure, etc.)

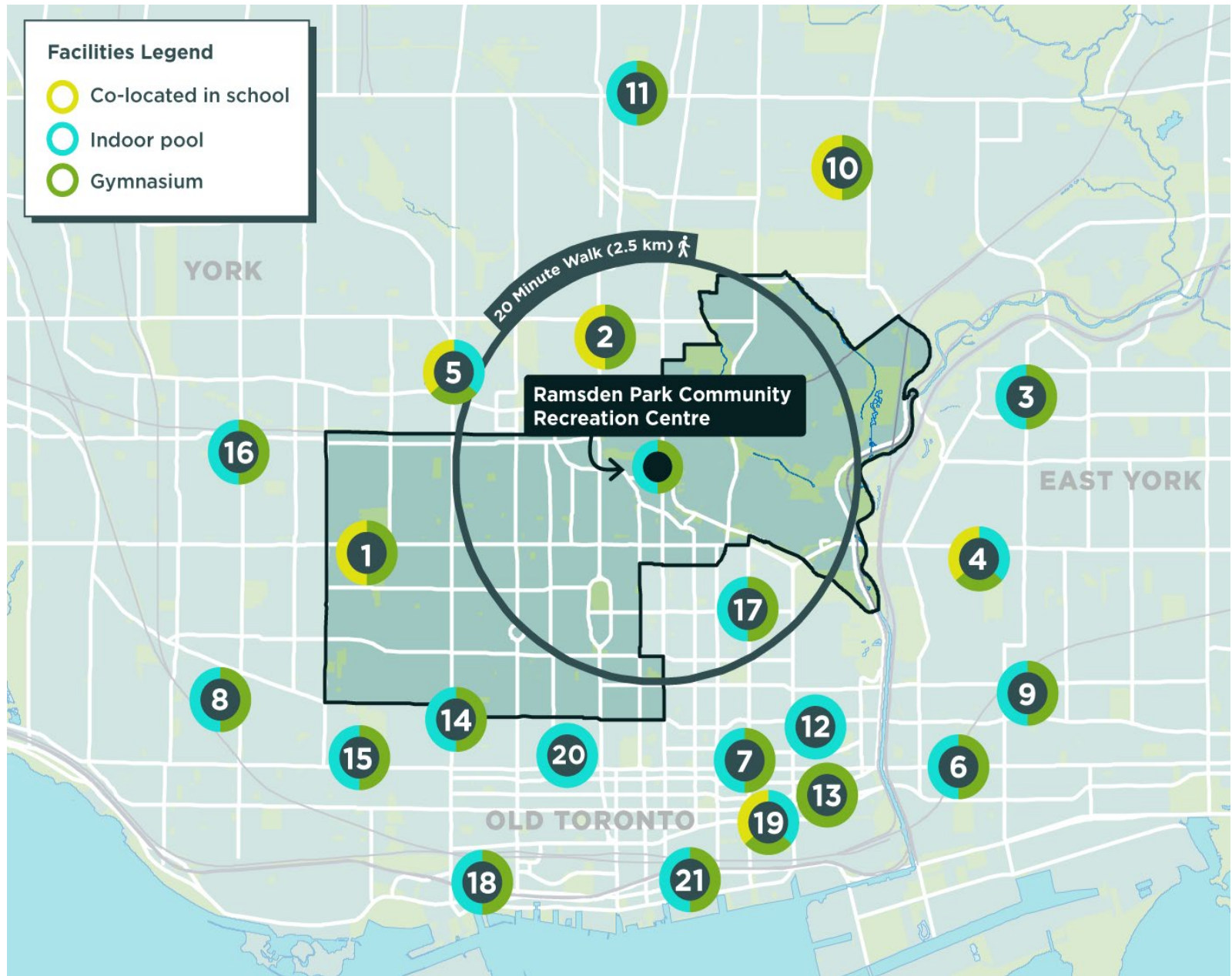
Where: Projects where civic lotteries have been used include:

- John Innes CRC & Moss Park
- Don Mills CRC
- Lawrence Heights CRC
- Ordnance-Wellington Parks
- Hanlan's Point Beach Working Group



Ramsden Park CRC Site & Context

Other Community Recreation Facilities



1. Bob Abate Community Recreation Centre
2. Brown Community Centre
3. East York Community Recreation Centre
4. Frankland Community Centre
5. Hillcrest Community Centre
6. Jimmie Simpson Recreation Centre
7. John Innes Community Recreation Centre
8. Mary McCormick Recreation Centre
9. Matty Eckler Recreation Centre
10. Maurice Cody Community Centre
11. North Toronto Memorial Community Centre
12. Pam McConnell Aquatic Centre
13. Regent Park Community Centre
14. Scadding Court Community Centre
15. Trinity Community Recreation Centre
16. Wallace Emerson Community Centre
17. Wellesley Community Centre
18. Canoe Landing Community Recreation Centre
19. St. Lawrence Community Recreation Centre
20. Harrison Pool
21. One Yonge Community Recreation Centre

Immediate Context



Example: Don Mills Community Recreation Centre



Example: Ethennonnhawahstihnen' CRC



Example: John Innes Community Recreation Centre



Example: Lawrence Heights Community Recreation Centre



Example: Rouge Valley Community Recreation Centre



Example: Western North York Community Recreation Centre



Example: Canoe Landing Community Recreation Centre



Example: York Community Recreation Centre



Examples of CRC spaces: Gymnasium



Examples of CRC spaces: Kitchens



Examples of CRC spaces: Fitness and Dance Studios



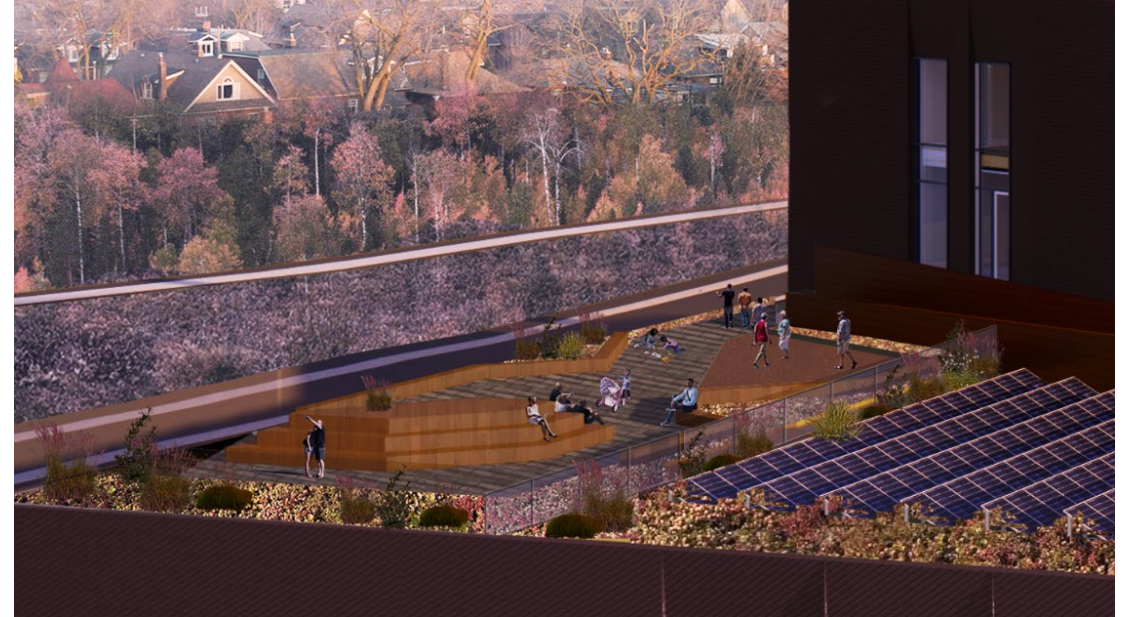
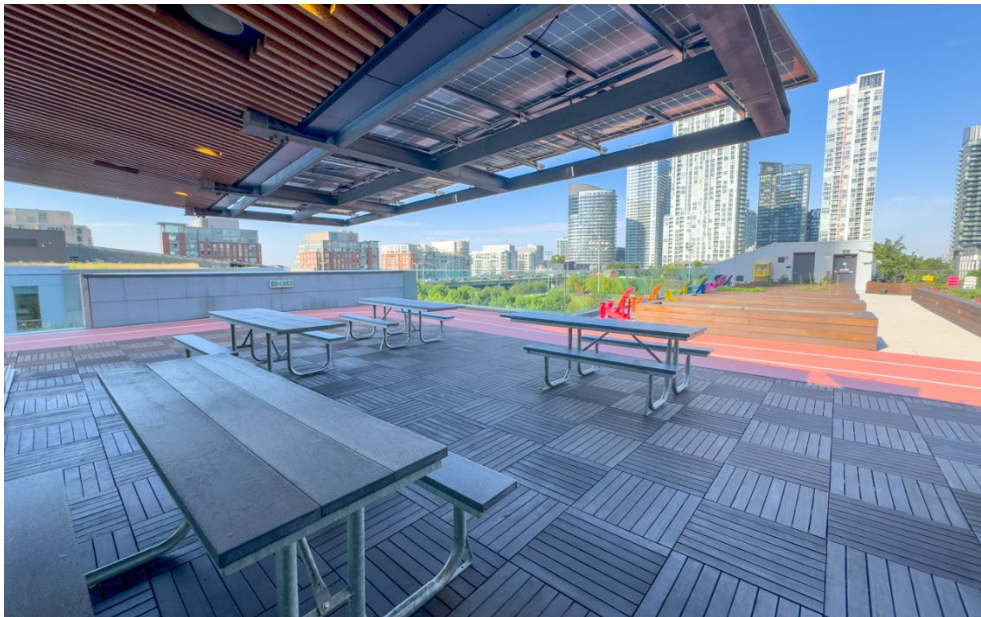
Examples of CRC spaces: Multi-Purpose Spaces



Examples of CRC spaces: Aquatics



Examples of CRC spaces: Rooftop Activations



Examples of CRC spaces: Unique Features



Q&A / Discussion

Overall Process Timeline



Thank you and Next Steps

**Thank you for your time and
for joining the conversation!**

- Visit the project webpage and sign up for email updates at: toronto.ca/RamsdenCRC
- Community Advisory Committee (CAC) Applications are launching today!