

Construction Update: April 11, 2025

Gardiner Expressway Strategic Rehabilitation: Dufferin Street to Strachan Avenue | Community Update

Thank you for subscribing to the Gardiner Expressway Rehabilitation, Section 2 Dufferin Street to Strachan Avenue, community update e-newsletter.

Project Overview:

The project will take place in three stages, focusing on two lanes at a time while keeping four lanes open.

- Stage 1 south two lanes
- Stage 2 middle two lanes (current stage)
- Stage 3 north two lanes

Key elements of the construction project include:

- Preparation work (completed).
- Installing temporary support systems to allow for the construction work to safely take place while keeping two-thirds of the Expressway open.
- Demolishing and reconstructing the elevated roadway.
- Removing and replacing the bridge deck and the large beams (girders) that support the road.
- Rehabilitating the concrete support columns (bents).
- Finishing works.

Roadway: Demolishing and reconstructing the elevated roadway.

Completed:

- Stage 2 bridge deck demolition.
- Stage 2 concrete placement for bridge deck.
- Stage 2 Dufferin St. bridge concrete repairs for soffit.
- Stage 2 installation of bridge deck reinforcement.

What's happening:

- Stage 2 expansion joint assembly installation, reinforcement placement and concrete placement is ongoing this week.
- Stage 2 deck drains installation and concrete placement for deck drains is ongoing this week.
- Stage 2 surface preparations for bridge deck waterproofing has started this week.
- Concrete removals and preparations for concrete refacing will be ongoing at Bent 7, Bent 24 and Bent 34 (approx. 90m west, approx. 230m east and approx. 425m east of GO Station).

Location of work:

- Work is being done behind the green construction screen on the roadway and underneath the roadway.

Girders: Removing and replacing the large beams (girders) that support the road. This process includes the prefabrication of the new girders.

Completed:

- Removal of girders in Stage 1 and 2.
- Installation of girders in Stage 1 and 2.
- Prefabrication of 536 precast girders produced as of last week (April 4, 2025).

What's happening:

- Stage 2 Dufferin St. Bridge partial depth concrete repairs completed for soffit and ongoing for fascia.

Location of work:

- Work is being done behind the green construction screen on the roadway and underneath the roadway.
- Girders are being fabricated in a facility north of Toronto.

Bents: Rehabilitating the concrete support columns (bents)

Completed:

- Reconstruction of all bents in Stage 1.
- Stage 2 bent cap demolition and removal of steel girders.
- Stage 2 bridge deck bent cap and girder demolition.
- Stage 2 removal of steel girders.
- Stage 2 installation of temporary support at bent caps.
- Stage 2 bent cap concrete removals.
- Stage 2 scaffolding installation for bent cap construction.
- Stage 2 construction of new bent caps for all bents.

Location of work:

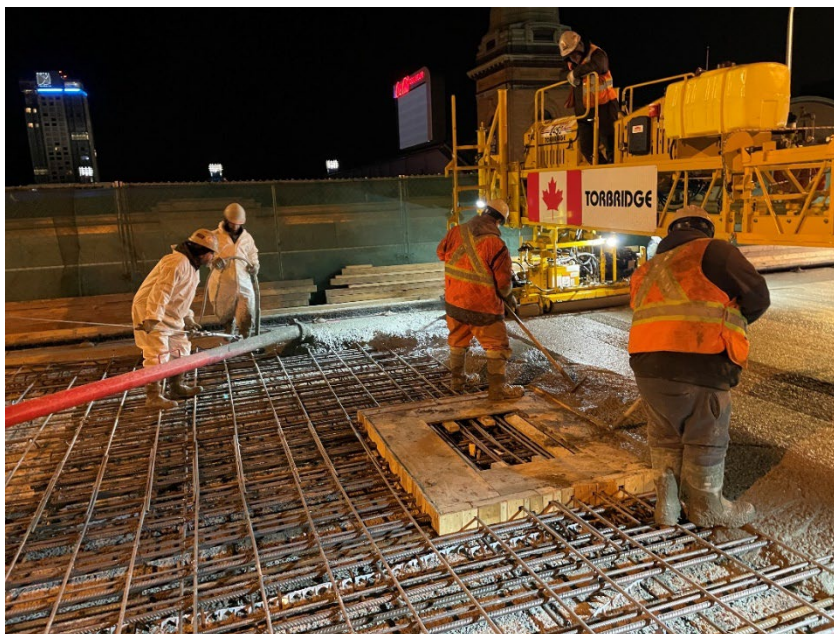
- Work is being done behind the green construction screen on the roadway and underneath the roadway.

For a visual map of the bent locations, visit the "Map of Work Area and Bent Location" tab on the [project website](#).

Visual Work on Site: The images below describe the type of work occurring on site during the week of March 31st, 2025.



Concrete trucks in preparation for the concrete pour at the top of the bridge deck.



Crews pouring concrete.



Crews performing preparation work for an upcoming concrete deck pour.



Crews reinforcing the bridge deck.

Thank you for your patience!

We appreciate your patience and understanding as we work towards a safer and more efficient Gardiner Expressway.

Please share this email

To ensure widespread awareness, please share this email with your neighbours and encourage them to sign up for updates to stay informed with the latest information.

For more information

If you have any questions or have any suggestions for what you would like to see in this community update, please contact the field ambassador for this project, Madeleine Eleuteri, at GardinerS2info@parsons.com or 437-996-4065.

Stay tuned for the next update!