

Construction Update: June 12, 2025

## Gardiner Expressway Strategic Rehabilitation: Dufferin Street to Strachan Avenue | Community Update

Thank you for subscribing to the Gardiner Expressway Rehabilitation, Section 2 Dufferin Street to Strachan Avenue, community update e-newsletter.

### Project Overview:

The project will take place in three stages, focusing on two lanes at a time while keeping four lanes open.

- Stage 1 south two lanes
- Stage 2 middle two lanes
- Stage 3 north two lanes (current stage)

### Key elements of the construction project include:

- Preparation work (completed).
- Installing temporary support systems to allow for the construction work to safely take place while keeping two-thirds of the Expressway open.
- Demolishing and reconstructing the elevated roadway.
- Removing and replacing the bridge deck and the large beams (girders) that support the road.
- Rehabilitating the concrete support columns (bents).
- Finishing works.

### Stage 3 Demolition Work Update

Demolition of the deck for Stage 3 was completed this week. Some remaining work involving the dismantling of steel girders and the removal of concrete from the tops of bents and pier caps will continue into next week, but this work is significantly less noisy than the recently completed deck demolition.

We recognize the recent demolition work on the Gardiner Expressway has been noisy and disruptive, and we sincerely thank residents for their continued patience and resilience throughout this phase of construction.

### Progress Update

Below is an overview of completed and ongoing work activities for Stage 3. Residents may hear construction related noises such as concrete removals, hand chipping, backup alarms and other machinery noises. These activities are expected to be less disruptive than the deck demolition.

**Roadway:** Demolishing and reconstructing the elevated roadway.

Completed:

- Stage 3 existing roadway lighting removals completed.
- Stage 3 asphalt milling completed.
- Stage 3 temporary roadway lighting installations completed.
- Stage 3 bridge deck demolition completed from West Abutment to Bent 28 (approx. 220m west to approx. 310m east of GO Station).

What's happening:

- Bridge deck demolition will be ongoing from Bent 28 to Bent 35 (approx. 310m to approx. 450m east of GO Station).
- Concrete placement for bottom section of northwest retaining wall will be ongoing (approx. 220m west of GO Station).

Location of work:

- Work is being done behind the green construction screen on the roadway and underneath the roadway.

**Girders:** Removing and replacing the large beams (girders) that support the road. This process includes the prefabrication of the new girders.

Completed:

- Removal of girders in Stage 1 and 2.
- Installation of girders in Stage 1 and 2.
- Prefabrication of 633 precast girders produced as of June 5, 2025.
- Stage 3 removal of steel girders completed from Bent 11 to Bent 16 (approx. 20m west of GO Station to 80m east of GO Station).
- Stage 3 removal of concrete girders completed from West Abutment to Bent 11 (approx. 220m to approx. 20m west of GO station) and from Bent 16 to Bent 28 (approx. 80m to approx. 310m west of GO Station).

What's happening:

- Removal deck over steel girders (and steel girders) from Bent 30 to Bent 35.
- Girders are being fabricated daily.

Location of work:

- Work is being done behind the green construction screen on the roadway and underneath the roadway.
- Girders are being fabricated in a facility north of Toronto.

**Bents:** Rehabilitating the concrete support columns (bents)

Completed:

- Reconstruction of all bents in Stage 1.
- Reconstruction of all bents in Stage 2.
- Stage 3 reconstruction of West abutment, Bent 1 and Bent 2 (approx. 220m to approx. 185m west of GO Station).

What's happening:

- Concrete removals by machine from Bent 22 to Bent 30 (approx. 190m to approx. 350m east of GO Station).

- Concrete removals by hand chipping for bent caps will be ongoing from Bent 17 to Bent 22 (approx. 100m to approx. 190m east of GO Station).
- Scaffolding installation for bent cap construction will be ongoing at Bent 9 and Bent 10 (approx. 55m and approx. 35m west of GO station) (approx. 110m to approx. 35m west of GO Station), progressing eastwards.
- Concrete placement for bent cap construction will be ongoing from Bent 3 to Bent 5 (approx. 220m to approx. 185m west of GO Station), progressing eastwards.
- Stage 3 formwork construction and reinforcement installation for Bent Cap is ongoing at Bents 6 and 7 (approx. 110m west and approx. 90m west of GO Station).

Location of work:

- Work is being done behind the green construction screen on the roadway and underneath the roadway.

For a visual map of the bent locations, visit the “Map of Work Area and Bent Location” tab on the [project website](#).

**Visual Work on Site:** The images below describe the type of work occurring on site during the week of June 2<sup>nd</sup>, 2025.



**Stage 3 Superstructure demolition**



**Stage 3 Bent cap demolition**



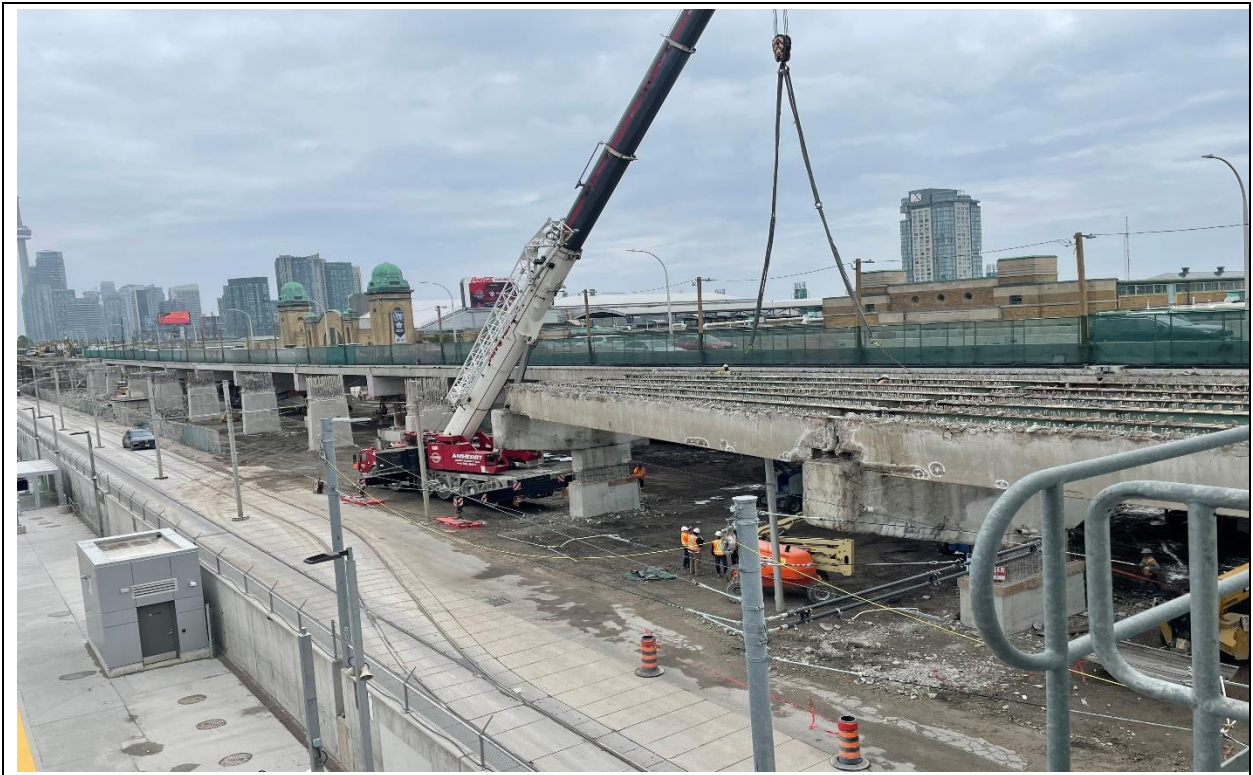


**Stage 3 Scaffolding installation for bent cap construction**

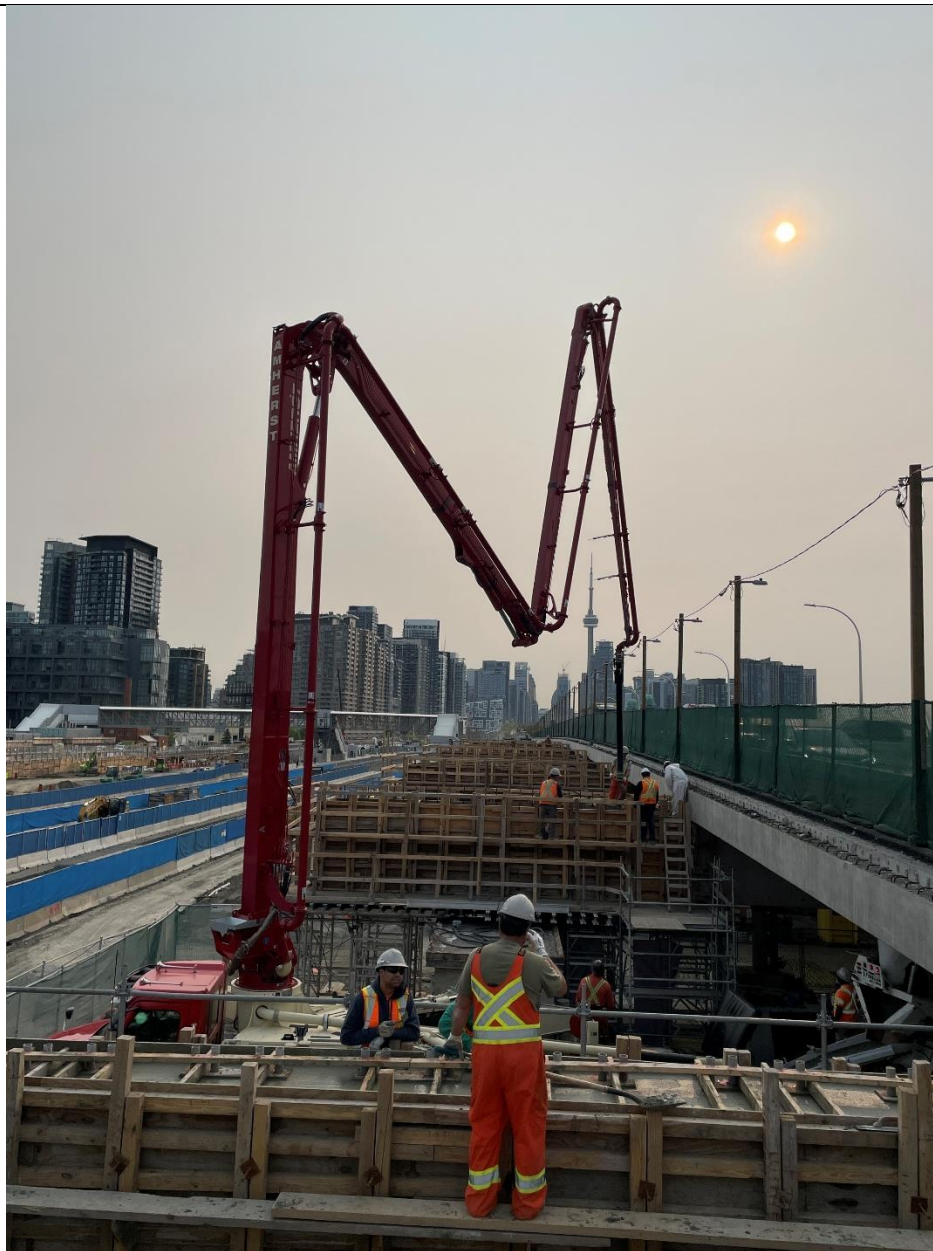


**Stage 3 Bent cap concrete removals**





**Stage 3 Steel Girder Removal**



**Stage 3 bent cap scaffolding installation**





**Stage 3 bent cap scaffolding installation**

**Thank you for your patience!**

We appreciate your patience and understanding as we work towards a safer and more efficient Gardiner Expressway.

**Please share this email**

To ensure widespread awareness, please share this email with your neighbours and encourage them to sign up for updates to stay informed with the latest information.

### For more information

If you have any questions or have any suggestions for what you would like to see in this community update, please contact the field ambassador for this project, Madeleine Eleuteri, at [GardinerS2info@parsons.com](mailto:GardinerS2info@parsons.com) or 437-996-4065.

Stay tuned for the next update!