

Construction Update: August 26, 2025

## Gardiner Expressway Strategic Rehabilitation: Dufferin Street to Strachan Avenue | Community Update

Thank you for subscribing to the Gardiner Expressway Rehabilitation, Section 2 Dufferin Street to Strachan Avenue, community update e-newsletter.

### Project Overview:

The project is taking place in three stages, focusing on two lanes at a time while keeping four lanes open.

- Stage 1 south two lanes (complete)
- Stage 2 middle two lanes (complete)
- Stage 3 north two lanes (current stage)
- Stage 4 center median barrier reconstruction (final stage)

### Key elements of the construction project include:

- Preparation work (completed).
- Installing temporary support systems to allow for the construction work to safely take place while keeping two-thirds of the Expressway open.
- Demolishing and reconstructing the elevated roadway.
- Removing and replacing the bridge deck and the large beams (girders) that support the road.
- Rehabilitating the concrete support columns (bents).
- Finishing works.

### Upcoming Overnight Lane Reduction

Starting at 11 p.m. on Tuesday, August 26, until 5 a.m. on Wednesday, August 27, the eastbound Gardiner Expressway will be reduced to one lane between Dufferin Street and Strachan Avenue to repair a damaged crash attenuator.

### Construction Work During the CNE:

Regular daytime work, along with overnight work for girder installation and concrete deck placement will proceed as scheduled during the Canadian National Exhibition (CNE). This work will not impact the event.

### Roadway: Demolishing and reconstructing the elevated roadway.

Completed:

- Stage 3 existing roadway lighting removals completed.
- Stage 3 asphalt milling completed.
- Stage 3 temporary roadway lighting installations completed.
- Stage 3 bridge deck demolition completed.

- Stage 3 sleeper slab and approach slab construction completed (approx. 220m west of GO Station).
- Stage 3 bridge deck construction completed from West abutment to Bent 19 (approx. 220m west to approx. 135m east of GO Station).
- Concrete placement and granular backfilling for the bottom section of the northwest retaining wall is completed (approx. 220m west of GO Station).

What's happening:

- Stage 3 bridge deck concrete placement from Bent 19 to Bent 23 (approx. 135m to approx. 210m east of GO Station) began on Sunday August 24, 2025.
- Stage 3 bridge deck concrete placement from Bent 23 to Bent 27 (approx. 210m to approx. 285m east of GO Station) will begin on Thursday August 28, 2025, and continue into Friday morning.
- Stage 3 bridge deck reinforcement installation will be ongoing from Bent 23 to Bent 31 (approx. 210m to approx. 365m east of GO Station).

Location of work:

- Work is being done behind the green construction screen on the roadway and underneath the roadway.

**Girders:** Removing and replacing the large beams (girders) that support the road. This

Completed:

- All 705 precast girders have now been produced.
- Stage 3 removal of concrete girders has been completed.
- Girder installation was completed from Span 1 to Span 35.

What's happening:

- Stage 3 girder placement has been completed.

Location of work:

- Work is being done behind the green construction screen on the roadway and underneath the roadway.

**Bents:** Rehabilitating the concrete support columns (bents)

Completed:

- Stage 3 reconstruction of West abutment to Bent 35 (approx. 220m to approx. 450m east of GO Station).
- Bent reconstruction completed for Stage 3.
- Concrete refacing completed at Bent 24 (south) and Bent 34 (north & south) (approx. 230m east and approx. 425m east of GO Station).
- Concrete removals are completed for substructure partial depth patch repairs at Bent 6, Bent 7, and Bent 9 (approx. 110m, approx. 90m, and approx. 55m west of GO Station).

What's happening:

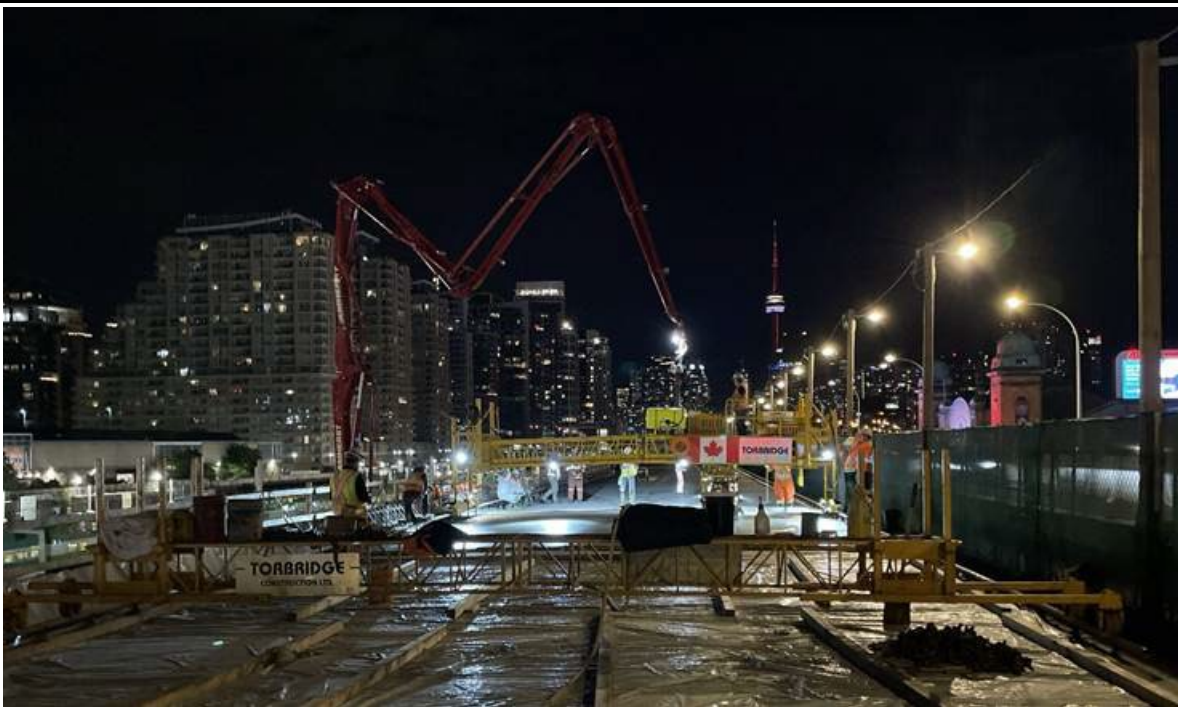
- Partial depth concrete removals for concrete patch repairs are ongoing at various bents.
- Concrete removals completed and preparations for concrete refacing are ongoing at Bent 14 north and south, Bent 15 north and south and Bent 16 north and south (approx. 40m, approx. 60m, and approx. 80m east of GO Station respectively).

Location of work:

- Work is being done behind the green construction screen on the roadway and underneath the roadway.

For a visual map of the bent locations, visit the "Map of Work Area and Bent Location" tab on the [project website](#).

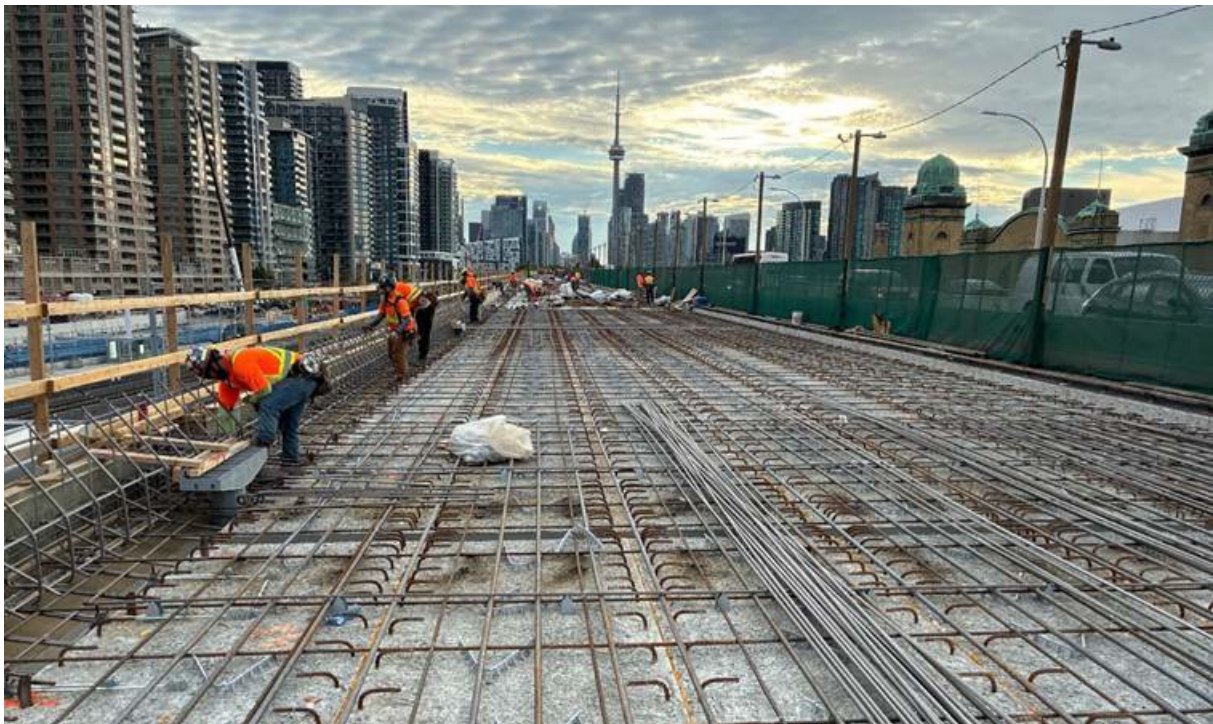
**Visual Work on Site:** The images below describe the type of work occurring on site during



**Stage 3 Bridge Deck Concrete Placement**



**Stage 3 Bridge Deck Concrete Curing**



**Stage 3 Bridge Deck Reinforcement Installation**





**Stage 3 Bridge Deck Reinforcement Installation**



**Stage 3 Bridge deck overhang reinforcement installation**

### Thank you for your patience!

We appreciate your patience and understanding as we work towards a safer and more efficient Gardiner Expressway.

### Please share this email

To ensure widespread awareness, please share this email with your neighbours and encourage them to sign up for updates to stay informed with the latest information.

### For more information

If you have any questions or have any suggestions for what you would like to see in this community update, please contact the field ambassador for this project, Madeleine Eleuteri, at [GardinerS2info@parsons.com](mailto:GardinerS2info@parsons.com) or 437-996-4065.

Stay tuned for the next update!