

Construction Update: September 9, 2025

Gardiner Expressway Strategic Rehabilitation: Dufferin Street to Strachan Avenue | Community Update

Thank you for subscribing to the Gardiner Expressway Rehabilitation, Section 2 Dufferin Street to Strachan Avenue, community update e-newsletter.

Project Overview:

The project is taking place in three stages, focusing on two lanes at a time while keeping four lanes open.

- Stage 1 south two lanes (complete)
- Stage 2 middle two lanes (complete)
- Stage 3 north two lanes (current stage)
- Stage 4 center median barrier reconstruction (final stage)

Key elements of the construction project include:

- Preparation work (completed).
- Installing temporary support systems to allow for the construction work to safely take place while keeping two-thirds of the Expressway open.
- Demolishing and reconstructing the elevated roadway.
- Removing and replacing the bridge deck and the large beams (girders) that support the road.
- Rehabilitating the concrete support columns (bents).
- Finishing works.

Roadway: Demolishing and reconstructing the elevated roadway.

Completed:

- The majority of roadway work, including lighting, asphalt milling, bridge deck demolition and construction has been completed.
- Stage 3 installation of barrier wall reinforcement completed from northwest retaining wall to Bent 6 (approx. 235m to approx. 135m west of GO Station).

What's happening:

- Stage 3 installation of barrier wall reinforcement will be ongoing from Bent 6 to Bent 35 (approx. 135m west to approx. 450m east of GO Station).

Location of work:

- Work is being done behind the green construction screen on the roadway and underneath the roadway.

Girders: Removing and replacing the large beams (girders) that support the road. This process includes the prefabrication of the new girders.

Completed:

- All 705 girders have been installed.

Bents: Rehabilitating the concrete support columns (bents)

Completed:

- Bent reconstruction for Stage 3.
- Concrete refacing completed at the following columns: Bent 7 south, Bent 14 north and south, Bent 15 north and south, Bent 16 north and south, Bent 24 south, and Bent 34 north and south (approx. 90m west, approx. 40m east, approx. 60m east, approx. 80m east, approx. 230m east, and approx. 425m east of GO Station, respectively); Bent cap refacing is still pending.
- Partial-depth concrete patch repairs have been completed on the substructure from Bent 1 to Bent 10 and Bent 17 to Bent 33 (approx. 205m to approx. 35m west, and approx. 100m to approx. 405m east of GO Station respectively).

What's happening:

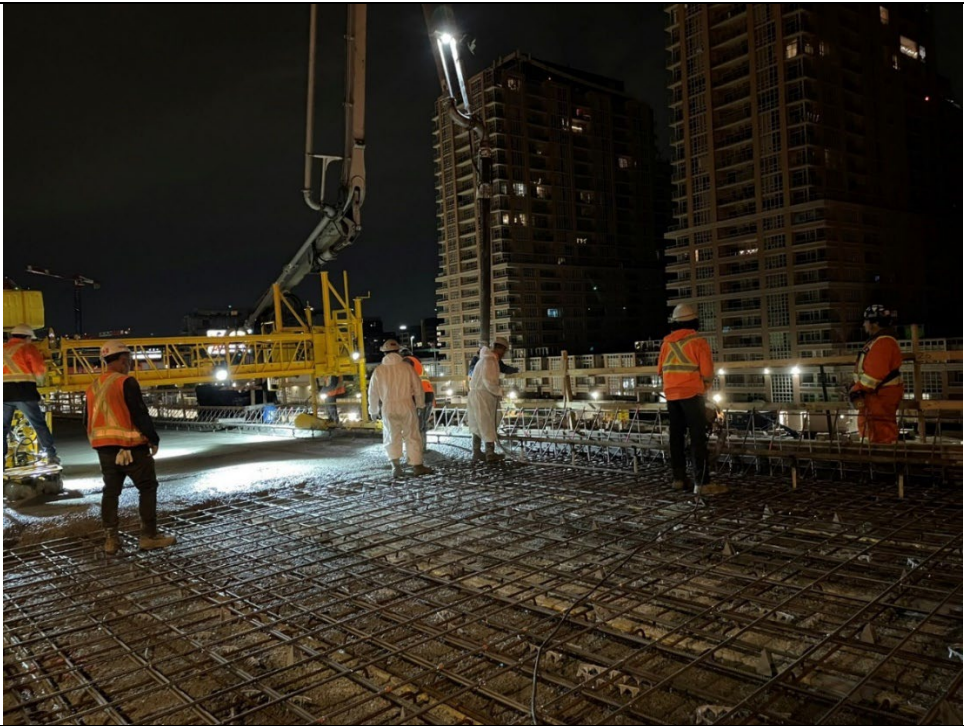
- Concrete refacing works will be ongoing at Bent 7 south (approx. 90m west of GO Station) and bent cap for Bent 16 (approx. 80m east of GO Station).

Location of work:

- Work is being done behind the green construction screen on the roadway and underneath the roadway.

For a visual map of the bent locations, visit the "Map of Work Area and Bent Location" tab on the [project website](#).

Visual Work on Site: The images below describe the type of work occurring on site during the weeks of August 25 and September 1, 2025.



Stage 3 Bridge Deck Pour



Stage 3 Bridge Deck Pour



Stage 3 Bridge Deck Concrete Placement



Stage 3 Bridge Deck Concrete Placement



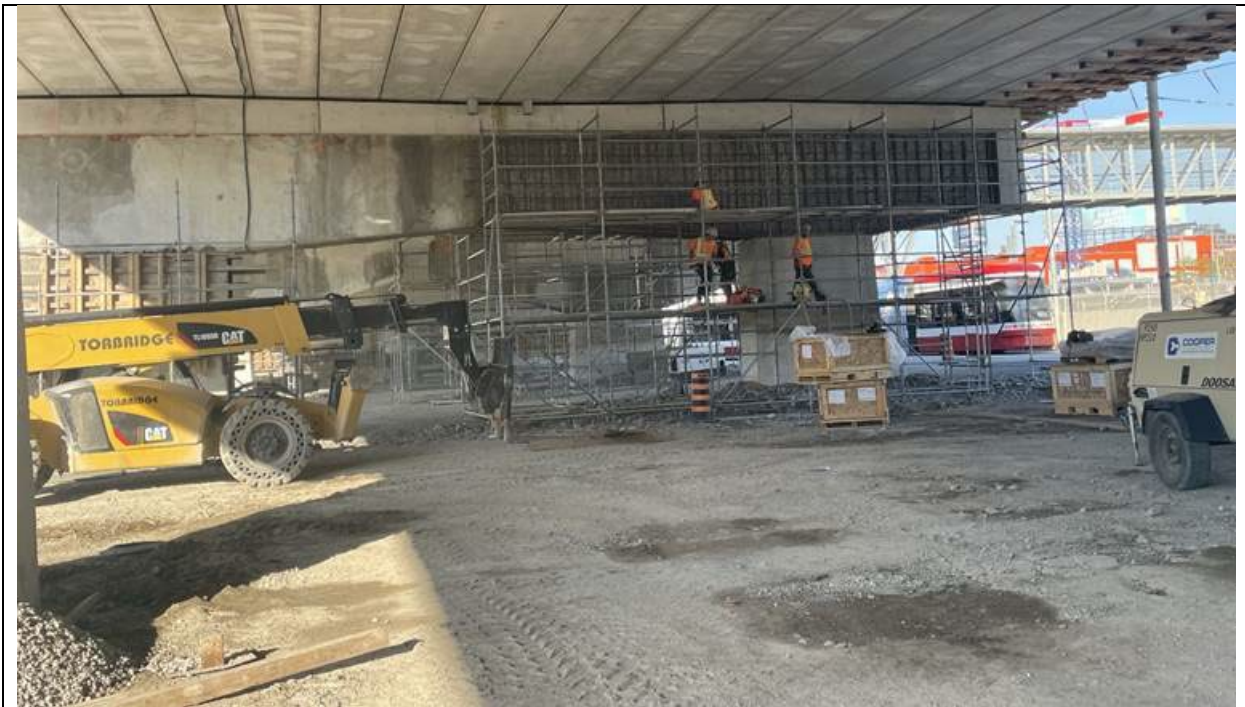
Stage 3 Bridge Deck Reinforcement Installation and Dry Run



Stage 3 Bridge Deck Reinforcement Installation



Stage 3 barrier wall reinforcement installation



Bent 16 bent cap refacing preparations

Thank you for your patience!

We appreciate your patience and understanding as we work towards a safer and more efficient Gardiner Expressway.

Please share this email

To ensure widespread awareness, please share this email with your neighbours and encourage them to sign up for updates to stay informed with the latest information.

For more information

If you have any questions or have any suggestions for what you would like to see in this community update, please contact the field ambassador for this project, Madeleine Eleuteri, at GardinerS2info@parsons.com or 437-996-4065.

Stay tuned for the next update!