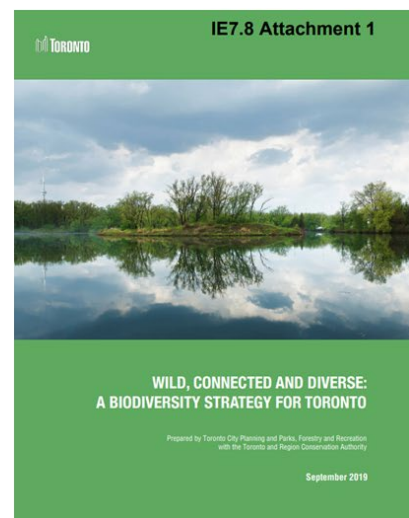
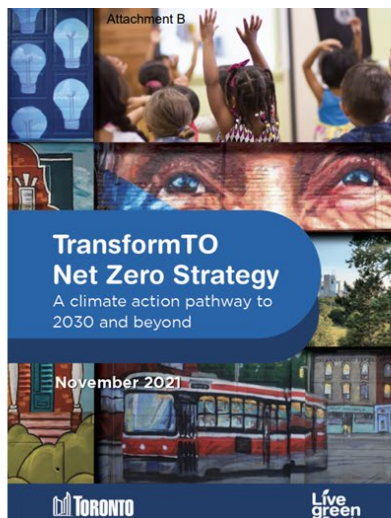
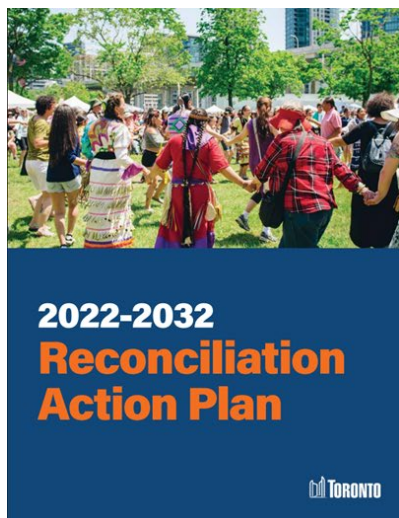


City Policies, Programs & Strategies

Queen's Park North Revitalization Info Sheet



Examples of key City documents guiding the revitalization process.

Our analysis so far

The revitalization of Queen's Park North will be informed by City policies, programs, and strategies to ensure the project reflects the City's planning framework and future vision for Toronto's parks system and the downtown core.

This Info Sheet is part of a series of Info Sheets created to support the City-led engagement process for the revitalization of Queen's Park North. The content in this Info Sheet was provided by the City of Toronto with inputs from Janet Rosenberg & Studio Inc., and Trophic Design, firms retained by the Weston Foundations, and working collaboratively with the City of Toronto.

The Toronto Tree Bylaw

In 2021, City Council set a target of reaching 40% tree canopy cover by 2050, to align with the TransformTO Net Zero Strategy. While planting new trees is important, protecting big, healthy, mature trees is key to a strong urban forest.

The Toronto Tree Bylaw protects trees on both private and City land by requiring a permit to remove or harm most trees. The bylaw also requires replacement trees when trees are removed and protects sensitive areas like ravines and forests. It helps make sure development and capital projects respect and preserve Toronto's natural heritage.

Currently, the City is reviewing two tree-related bylaws to improve protections for the trees across Toronto. The goal is to address operational, environmental and policy challenges, improve service delivery, and reflect the values and input of Toronto's residents and community partners.

Read more about the [Toronto Tree Bylaw Review](#).

What this means for Queen's Park North

Mature trees in and around the park will be protected under the City's Tree Protection By-law, which applies to all City projects in parks and public spaces.

For Queen's Park North, this means prioritizing the preservation of the existing tree canopy and the ecosystems that support it in all future improvements.

Reconciliation Action Plan (2022-2032)

The City of Toronto's Reconciliation Action Plan (2022–2032) provides a ten-year framework to advance truth, justice, and reconciliation with Indigenous communities. It emphasizes respect for Indigenous rights, presence, values, and knowledge, and seeks to ensure these are reflected across all aspects of city life and public space. The Plan was shaped through dialogue with First Nations, Inuit, and Métis Peoples who live and work in Toronto.

Read more about the [Reconciliation Action Plan \(2022–2032\)](#).

What this means for Queen's Park North

For Queen's Park North, this means working in relationship with Indigenous advisors, Nations, and community partners to guide design, interpretation, programming and governance. Consistent with Strategic Action 19(D) of the Reconciliation Action Plan,

the project will uphold principles of Free, Prior, and Informed Consent (FPIC) by ensuring early, ongoing, and informed engagement with Indigenous Nations, People and community groups. These conversations will explore ways to respectfully integrate Indigenous Ways of Knowing and Being into the park's design and stewardship.

The project also supports Strategic Action 15, which calls on Parks, Forestry & Recreation to advance Indigenous Placekeeping. Through this work, the revitalization of Queen's Park North will honour both the deep Indigenous history of this city and the continuing presence and leadership of Indigenous Peoples in shaping Toronto's future.

Council Directions (2025)

In 2025, City Council directed City staff to look at ways to offer more food, drinks, and improved winter access to public washrooms in Toronto parks. These amenities could be scaled to fit each park: for example, small huts offering hot drinks in winter, or food kiosks with picnic seating. The goal is to create more enjoyable and welcoming park experiences, inspired by successful ideas from cities around the world.

Read more about [City Council directions \(2025\)](#).

What this means for Queen's Park North

Food and Beverage

City Council has directed staff to expand food and drink options in Toronto parks.

For Queen's Park North, this could include kiosks or a small café that make the park more welcoming, encourage people to stay longer, and create a lively space for meeting friends and community gatherings.

Washrooms

The Queen's Parks North Revitalization provides an opportunity to address the lack of a public washroom in the park and increase public washroom availability in the area with winter accessibility.

Downtown Parks and Public Realm Plan (2018)

This plan aims to create a more connected, accessible, and lively network of parks and public spaces in downtown Toronto. This plan was informed by the [Public Space Public Life study](#) conducted in 2016. As the city grows quickly, it helps guide how to improve

and expand parks and open spaces in the downtown to serve more people and build a stronger sense of community.

Read more about the [Downtown Parks and Public Realm Plan](#).

What this means for Queen’s Park North

The plan identifies Queen’s Park and University Avenue as priority public realm areas. The revitalization aligns with the “University Park” vision by strengthening connections, enhancing accessibility, and elevating the civic role of the park. It also supports the plan’s goals to improve existing parkland and enhance the public realm system, ensuring it is accessible, inclusive, and welcoming to everyone who lives, works, or visits Downtown.

The Parkland Strategy (2019)

The City’s Parkland Strategy sets a long-term vision for how Toronto’s parks are planned, designed, and improved. It emphasizes the importance of protecting existing green spaces while expanding and connecting the City’s overall park system and making parks more welcoming, inclusive, and accessible for everyone. As part of a five-year review process launched in 2024, feedback is currently being collected on the changing needs and priorities of residents for parkland.

Learn more about [The Parkland Strategy \(2019\)](#).

What this means for Queen’s Park North

For Queen’s Park North, this means upgrading an important downtown green space where demand is high but parkland is limited. Revitalization will improve accessibility, add amenities, and make the park more welcoming year-round, while strengthening its role as part of the larger downtown public realm network.

Parks & Recreation Facilities Plan (2019)

This plan provides a 20-year framework for renewing and building parks and recreation facilities across Toronto. It highlights the need to modernize spaces, address gaps in access, and create facilities that reflect the city’s growing and diverse population. As part of a five-year review process launched in 2024, feedback is currently being collected to understand the changing needs and priorities of residents for recreation facilities.

What this means for Queen’s Park North

Future improvements to Queen’s Park North will consider how park amenities, such as washrooms, seating, and gathering areas, can be updated to be more inclusive, accessible, and welcoming for all users, while also supporting year-round use of the park.

Learn more about the [Parks & Recreation Facilities Plan \(2019\)](#).

TransformTO Net Zero Strategy

TransformTO is the City’s climate action strategy created to set a path to reduce greenhouse gas emissions to net zero by 2040. The strategy focuses on creating healthier, more sustainable, and more resilient communities by integrating climate action into how Toronto’s buildings, transportation, waste, and green spaces are planned and managed.

What this means for Queen’s Park North

The revitalization will support TransformTO goals by protecting and enhancing the tree canopy, improving biodiversity, and designing the park to be resilient to climate impacts such as extreme heat. Features like shade, planting, permeable surfaces and sustainable materials will help ensure the park contributes to a greener and healthier downtown.

Read more about the [TransformTO Net Zero Strategy](#).

Museum Subway Station Entrance (2024-2026)

As part of the TTC’s efforts to improve safety and modernize transit, a new entrance was built at the north end of Queen’s Park Circle (located within Queen’s Park North). This will make it easier and safer for people to access Museum Station. Improvements to the main entrance are expected to be finished in 2026.

Read more about the [Museum Subway Station Entrance \(2024–2026\)](#).

What this means for Queen’s Park North

The TTC opened a new subway entrance in the park in 2024, which has created more park usage and seen more people using the park as a crossing point into the University

of Toronto to the east and west and through to the Legislative Assembly at the southern end.