



Queen's Park North Revitalization

Public Working Session
November 4 2025

Land Acknowledgement

African Ancestral Acknowledgement



Why We're Here

The purpose of today's meeting is for you to meet the project team and **gather your feedback on the emerging design ideas** and governance approaches for the park revitalization.

Revitalization of Queen's Park North Community Workshop #2

Tuesday, November 4, 2025

6:30 – 9:00 pm

Metro Central YMCA, 20 Grosvenor Street



Proposed Agenda

6:30 PM Acknowledgements, Introductions and Agenda Review
City of Toronto, Third Party Public

6:35 City of Toronto Update on Progress to Date
City of Toronto

6:45 Emerging Design Ideas
Janet Rosenberg & Studio, Trophic Design

7:15 Facilitated Questions of Clarification

Workshop Rotations

The emerging design ideas have been organized into 3 categories, including: (1) Trees and Nature; (2) Community and Cultural Heritage; and (3) Visitor Experience. There will be an opportunity to rotate between stations every 20 minutes. You can visit as many or as few of the stations as you like.

7:25 Rotation 1 | 7:50 Rotation 2 | 8:15 Rotation 3

We want to know what you think about the emerging design ideas:

- Are there any you really like?
- Are there any that are worrying or concerning to you?
- Do you have any suggestions on how we could address your concerns (or any other feedback)?

8:35 Facilitator Highlights from Workshop Stations

Closing Plenary

- Overall, how supportive are you of where the design is going?

8:55 Wrap-Up and Next Steps
City of Toronto, Third Party Public

9:00 Adjourn

Workshop purpose

To provide updates on the revitalization planning process, share a summary of feedback to date, and share and seek feedback on the emerging design ideas

Resources:

www.toronto.ca/QueensParkNorth

Discussion Guide
Nov / Dec 2025

Information Sheets:

- Trees
- Governance
- Policies, Programs and Strategies
- Cultural Heritage

Meeting Code of Conduct

As a meeting participant, we encourage you to:

- Approach conversations with **curiosity** and a **willingness to learn** from others.
- Be an **active listener** and keep an **open mind** by valuing a diversity of views and opinions.
- Treat all participants with **kindness and respect**, recognizing that all voices are valuable.
- **Critique ideas**, not individuals.
- **Avoid language or behaviours** that could be considered rude, offensive, or discriminatory (e.g. cursing and derogatory terms).

To maintain a respectful and inclusive environment, offensive and discriminatory comments **are not permitted**. Participants engaging in such behaviour may be asked to leave the meeting.



Project Update

Meet the Project Team - City of Toronto Parks & Recreation

City of Toronto Parks & Recreation

Paul Farish

Director

Parks Planning and Strategic Initiatives

David O'Hara

Manager

Park Design

Shannon Lawrence (Project lead)

Senior Project Manager

Park Design

Alex Deighan (Governance lead)

Manager

Client and Business Services

Joanna Delos Reyes (Engagement Lead)

Senior Public Consultation Coordinator

Community Engagement

Local Councillor

Dianne Saxe

Councillor, University-Rosedale

Consultant Team

Third Party Public

Public Engagement

Trophic Design

Indigenous Engagement and Design

Janet Rosenberg & Studio

Landscape Architecture

ERA

Cultural Heritage

Cohen & Master

Arborist

Dougan Ecology

Ecological Consultant

About the Project

In 2024, the City was approached by the Weston family with an offer to donate \$50 million to improve the park, plus additional funding for long-term maintenance and programming.

In response to City Council direction to City staff to advance the project.



Council Direction - March (2025-CC28.1)

Negotiate and sign a donation agreement with the Weston Foundations to undertake a **first phase of community engagement and preliminary design** that will inform the scope of the larger donation acceptance agreement, and the staff report directed in Part 2.

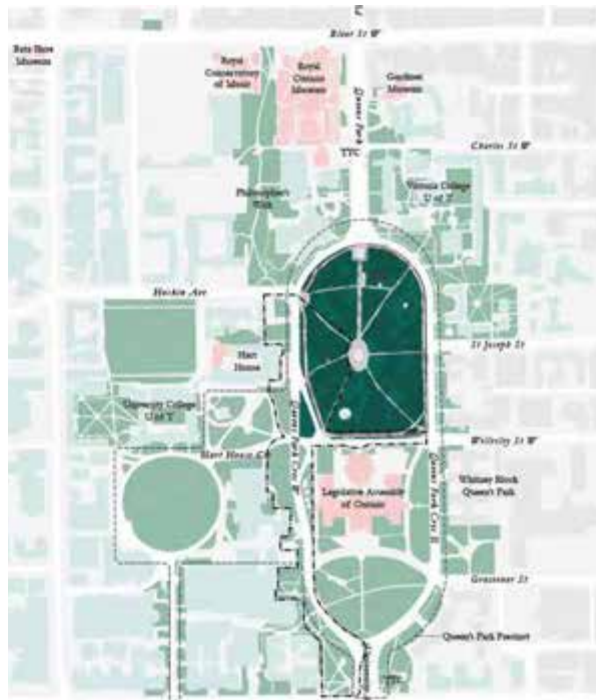
Status: COMPLETE

Report back to Council in Fall 2025 with project implementation update and recommend terms of phase two donation acceptance agreement to fund the final design and delivery of park enhancements and provide funding support for ongoing programming and maintenance.

Status: Underway – on track



Queen's Park North Context and Connections



Downtown Parks and Public Realm Plan 2018

Engagement Timeline

Community Design Process

Phase 1 (Mar to Jun 2025)

Setting the Stage

Inventory & analysis and Pre-Engagement

Towards a Vision

Develop a vision & guiding principles, identify opportunities

Phase 2A

Jul – Sept 2025

Exploring Design Options

Develop and seek feedback on revitalization options

Phase 2B

Oct – Dec 2025

Setting the Direction

Present and receive feedback on the preferred revitalizations plan

Phase 2C

Jan – Feb 2026

Phase 3 (2026)

Design Development

Develop detailed revitalization plan based on preferred design

Phase 4 (2026)

Construction Docs, Tender & Award

Prepare working drawings & specs, Issue tender & award contract

Phase 5 (2026+)

Construction

Activities

- Park pop-ups
- An online discussion guide
- Online survey
- An open house and public working session
- Focus group meetings
- Launch Indigenous Engagement

- Park pop-ups
- An online discussion guide
- Online survey
- An open house and public working session
- Focus group meetings
- Indigenous Engagement

- Park pop-ups
- An online discussion guide
- Online survey
- An open house and public working session
- Focus group meetings
- Indigenous Engagement

Outcomes

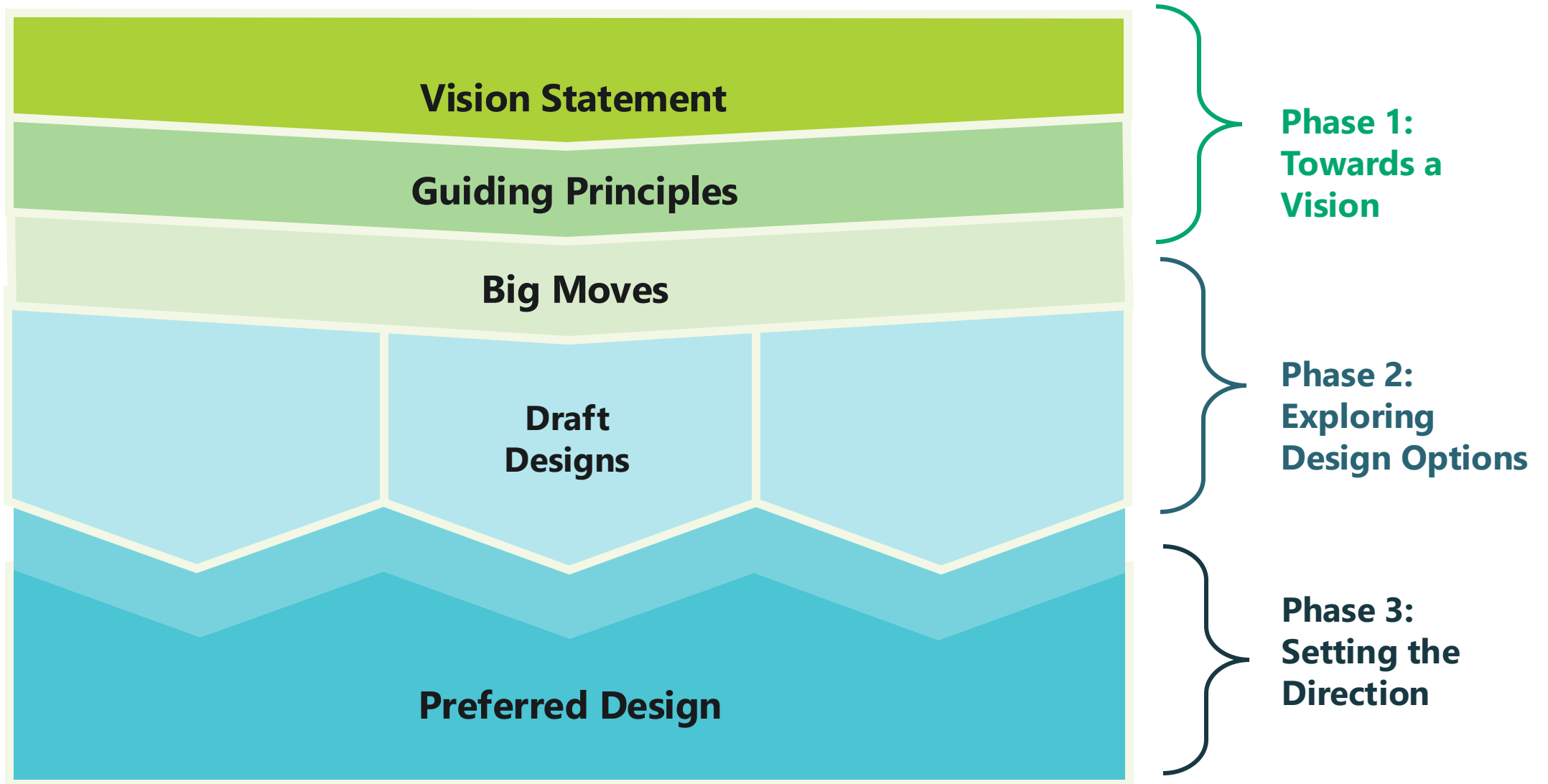
- Finalized Vision Statement
- Finalized Guiding Principles

- Finalized set of big moves and design options related to each of them

- Preferred park design, construction updates, and re-opening information (if available)

The project team will share project updates and consult with local right holders at every phase of the project.

The Community Design Framework



Website Update – Phase 2A

Website Update - www.toronto.ca/QueensParkNorth

- 2A Integrated Engagement Summary Report
- Focus Group summary reports
- Background and Analysis Information Sheets



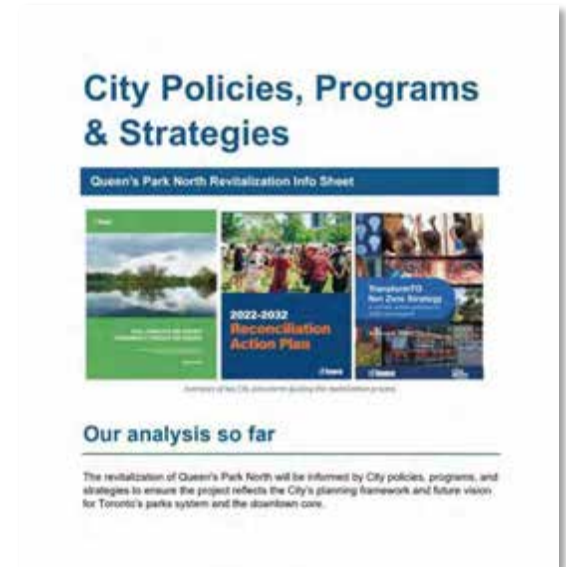
- What we know about the trees in QPN
- Approach to sustainability and succession, educational programming and stewardship



- Benefits of Collaborative Governance
- Collaborative Governance Models
- Structuring Collaborative Governance
- Realising the QPN governance model



- Indigenous Context
- Creation of King's College
- Planning Explorations
- Creation of Queen's Park
- Institutional Neighbours
- QPN as a site for gatherings and demonstrations
- Present day context



- QPN to be informed by City policies, programs, and strategies
 - The Toronto Tree Bylaw
 - Reconciliation Action Plan (2022-2032)
 - Council Directions (2025) – food and beverage + washrooms
 - Downtown Parks and Public Realm Plan (2018)
 - The Parkland Strategy (2019)
 - Parks & Recreation Facilities Plan (2019)
 - TransformTO Net Zero Strategy
 - Museum Subway Station Entrance (2024-2026)

Engagement Update – Phase 2A (July – October)

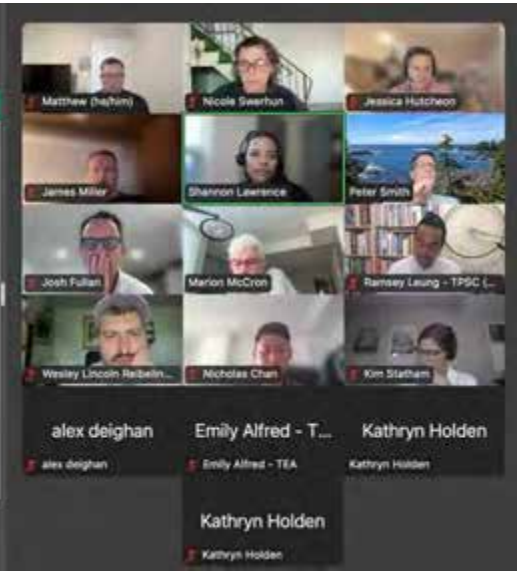


About the Project

In 2024, the City was approached by the Weston family with an offer to donate \$50 million to improve the park, plus additional funding for long-term maintenance and programming.

In response to City Council direction regarding the donation, City staff are advancing to a project comprising:

- Public engagement and visioning process starting in summer 2025
- Capital investments starting in 2026
- Long-term maintenance endowment
- Innovative operating and governance model.



Community Engagement Plan

Activity	Dates in 2025	Numbers (approx.)
Online Survey	July 15 – August 31	1,000
Pop-Ups in the Park (3)	Saturday, July 19 + Wednesday, July 23 + Wednesday, July 30	600+
Neighbouring Institutions Working Group Meetings 1	Wednesday, July 23	12
Community Open House & Workshop	Monday, July 28	45
Focus Group – Residents and Community Associations	Tuesday, August 5	10
Focus Group – Heritage Groups (1 of 2)	Thursday, August 7	4
Focus Group – Parks, Trees, and Nature Groups	Thursday, August 12	8
Focus Group – University Students	Tuesday, August 26	20
Focus Group – University Students	Tuesday, August 26	10
Focus Group – Heritage Groups (2 of 2)	Thursday, September 4	7
Focus Group – 2SLGBTQ+ (organizations)	Friday, September 5	8
Wendat Nation	Thursday, October 2	2
Neighbouring Institutions Working Group Meeting 2	Thursday, October 2	12
Six Nations of the Grand River	Monday, October 20	6
Mississaugas of the Credit First Nation	Tuesday, October 21	5
Rights Holders and Indigenous engagement	Thursday, October 23	1
Total Approx. Participants to date		1,700+

Overall core themes in feedback from all sources

1. Participants said they want to **protect, celebrate, and strengthen the capacity of the park to sustain trees and nature**, and maintain the park as a place of serenity
2. There's a strong interest in **keeping Queen's Park North a space for community and civic life**
3. Many suggested **opportunities for enhancing how people use and experience the park**, with a focus on **"light touch"** improvements that support comfort, accessibility, and safety
4. **Be inclusive** when reflecting the park's historic and ongoing cultural significance to different communities, with a focus on **First Nations** and **Indigenous** communities and **2SLGBTQIA+** communities
5. Ensure that any increased role for institutions in the park **does not overshadow community voices** or the park's role as a calm refuge for all

Range of Perspectives on multiple themes

There were a range of perspectives on multiple themes



No change

Consider keeping the park as it is today for the following reasons

Conditional change

Consider the following changes under certain conditions or with further considerations

Change

Consider the following changes

Vision:

Co-developed between City and Donor

July 2025

An extraordinary place for people and nature throughout the seasons, that respects the existing beauty of Queen's Park and showcases excellence in design, ecological stewardship, programming and partnerships.



November 2025

An extraordinary place for people and nature throughout the seasons, that respects the existing trees and heritage of Queen's Park North, fosters a welcoming environment, and showcases excellence in design, ecological stewardship, education, animation and collaborative governance

Guiding Principles

November 2025

1. Protect and enhance the trees
2. Enhance the visitor experience and animate the park year-round through improved amenities and modest programming
3. Incorporate Indigenous ways of knowing and being.
4. Implement ecological and sustainable practices that restores the land, supports plants and animal life, and enhances and expands ecological health and biodiversity.
5. Maintain Queen's Park as a public space and a place for respite and civic life, welcoming to all.
6. Strengthen relationships between public space and institutional and community partners.

Next Steps

- **November 2025**

- Discussion Guide – Nov 3
- Online Survey – Nov 11
- Park Pop-ups
 - Saturday, November 15, 2025, 11 am – 2 pm (Park and Museum Subway)
 - Tuesday, November 18, 4 – 7 pm (inside Hart House)
 - Wednesday, November 19, 11 am – 2 pm (Park) Discussion Guide – Nov 11
- Focus Group Meetings – Nov 12 – Nov 24
- Indigenous Sharing Circle - Early December
- Meetings with Nations – Early December
- Staff Report – Dec 2

- **Staff Report at Council**

- December 9 – Executive Committee
- December 16 – 18 – Council

Queen's Park North

Public Workshop
2025-11-04

Janet
Rosenberg
& Studio

Existing Conditions



A) 48th Highlanders Regimental Memorial



B) TTC subway entrance



C) King Edward VII Equestrian Statue



D) Fountain



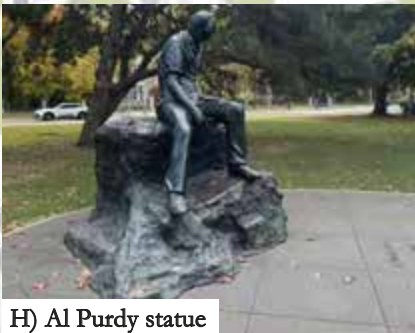
E) Ontario Legislature



F) View of North axis



G) View of lawn under trees



H) Al Purdy statue

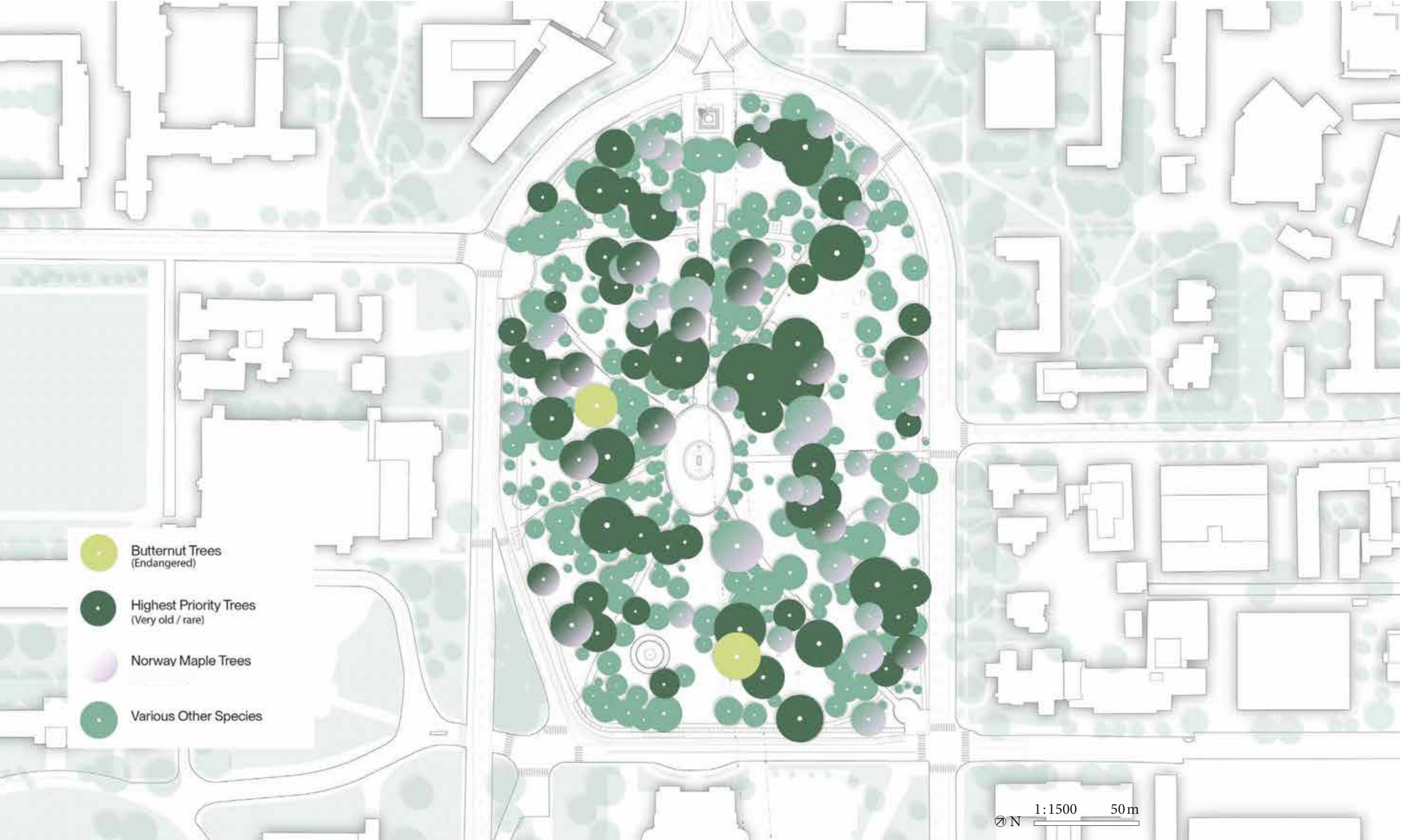


I) Central plaza



J) Southeast gateway and running path

Trees



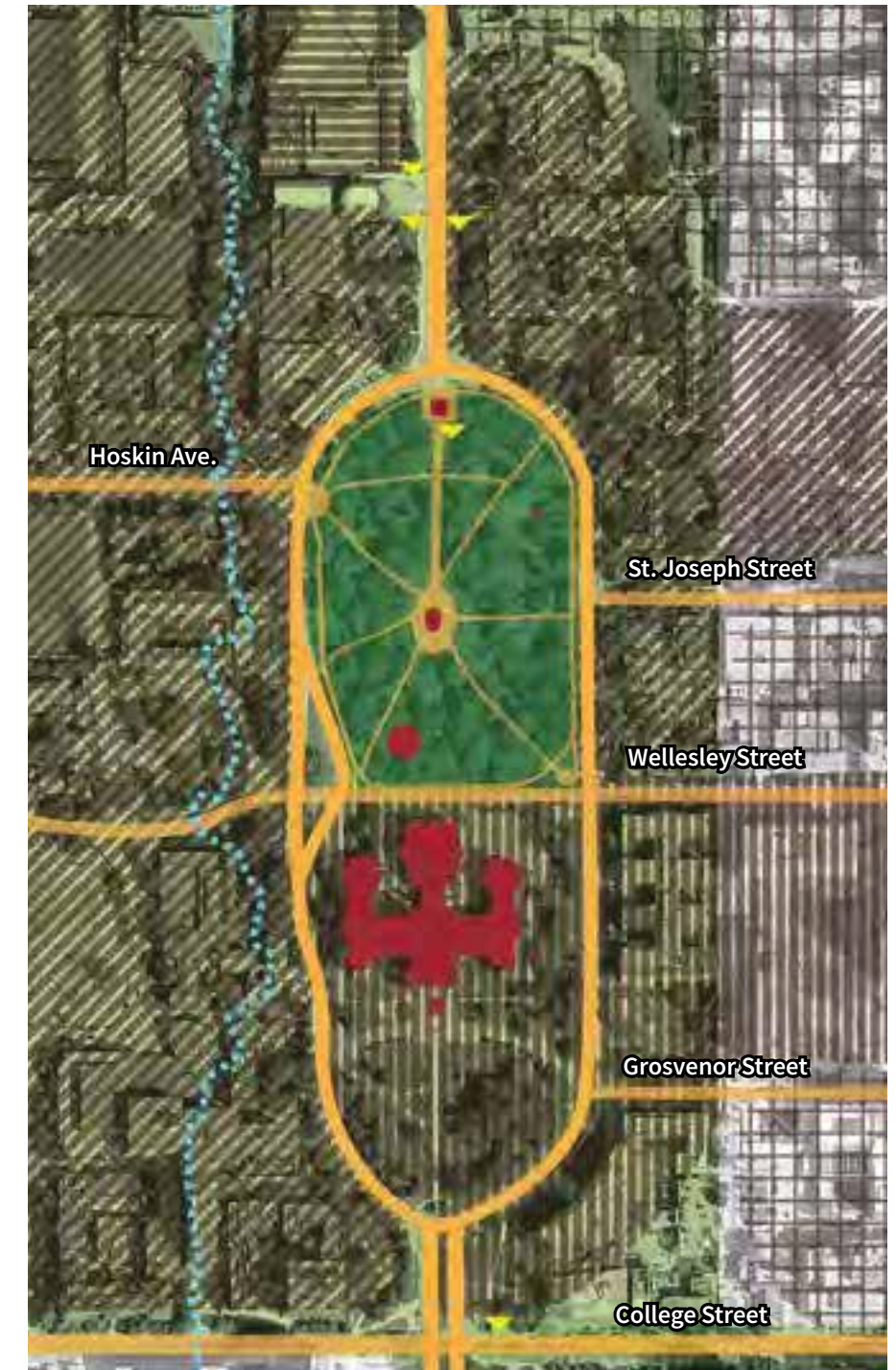
Ecology



Indigenous Representation

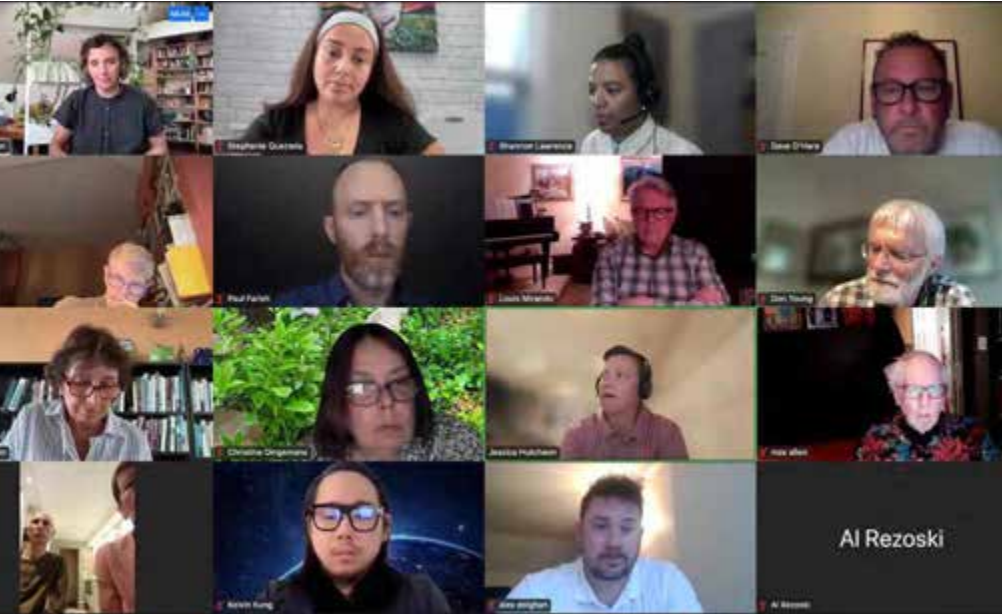


Cultural Heritage

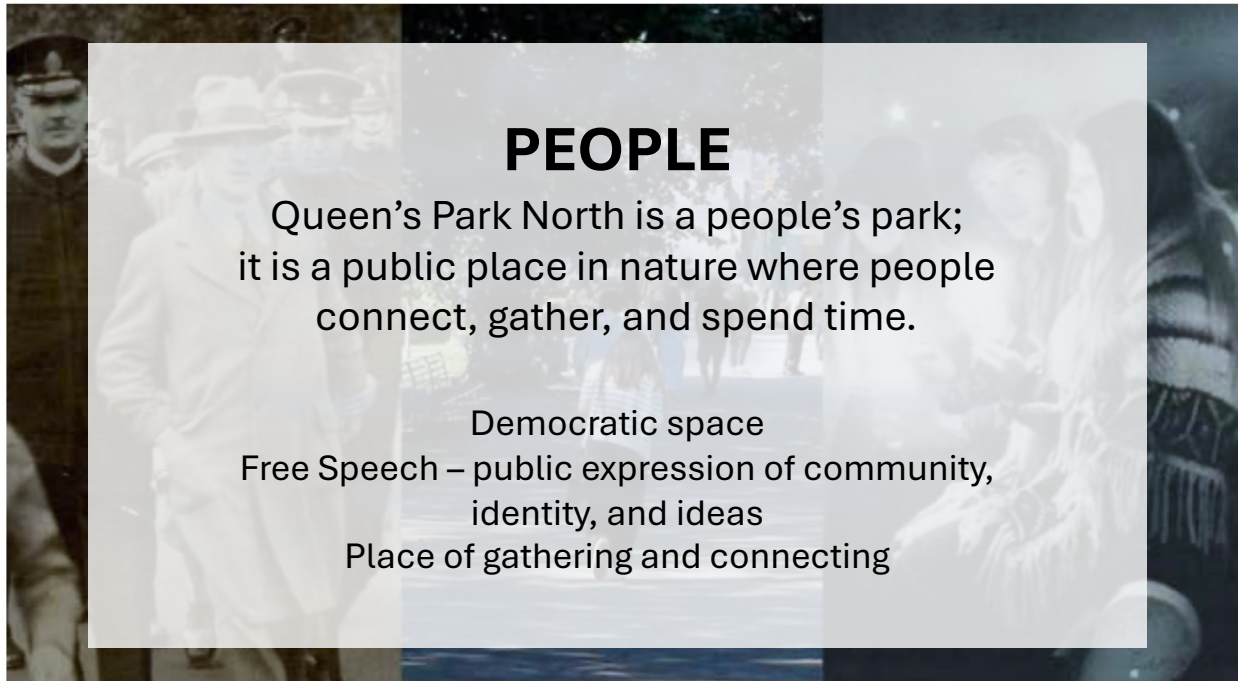


Through a cultural landscape and two-eyed seeing approach to understanding Queen's Park North, historical research identified 'eras of development', each characterized by human interaction with the natural setting.

Public Input




Cultural Heritage



PEOPLE

Queen's Park North is a people's park;
it is a public place in nature where people
connect, gather, and spend time.

Democratic space
Free Speech – public expression of community,
identity, and ideas
Place of gathering and connecting



NATURE

Queen's Park North is a place for trees that
nourish all inhabitants; it is a delicate eco-
system sustaining relationships between
human and non-human beings.

Indigenous relationship to lands
Kinship and renewal
Public park – access to green space
Nature – a place of respite, well being, and habitat



WELCOME

Queen's Park North is a place for
everyone; it is a place where expressions
of relationship, identity, free speech,
and political protest are possible.

Treaty relationship and relationship with others
Open to the public and welcoming to all
Pleasant, comfortable, and beautiful environment
Trees, open grounds, and amenities



GOVERNANCE

Queen's Park North is a place of governance
and stewardship; it is place of respect,
responsibility, and reciprocity where
human and ecological layers can co-exist.

Indigenous land and Treaty rights
Responsible governance and stewardship –
Baldwin Act and Yellowhead Wampum Belt
Care for land and community
Backyard of Legislature

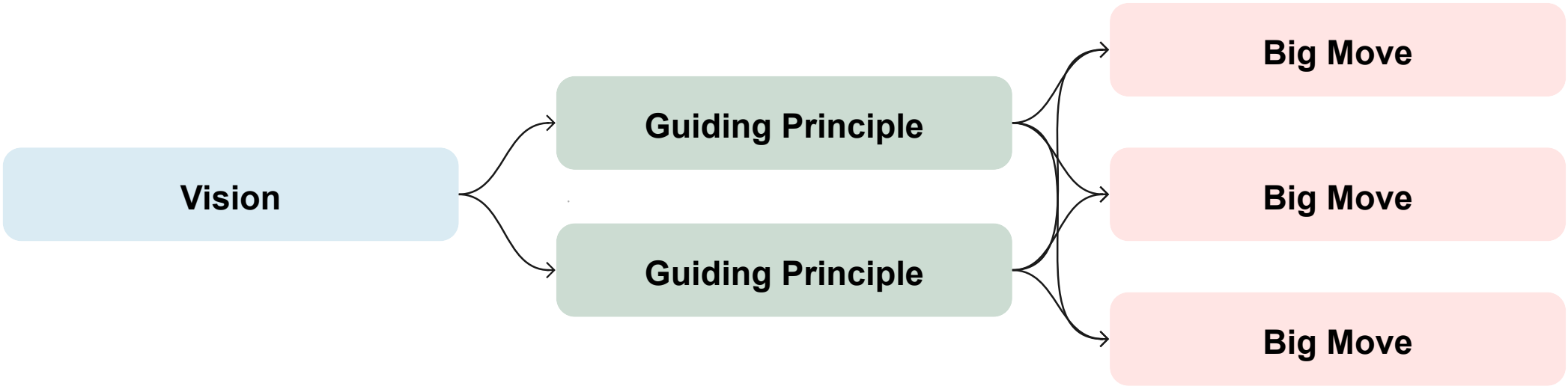
Four overlapping and interrelated themes have emerged. These themes are rooted in the sustained physical patterns and patterns of use associated with this place and represent the complex and interconnected histories, identities, and meanings of Queen's Park North for different communities.

Big Moves

Achieving the Guiding Principles

Big Moves give specific direction for how to achieve the Vision and Guiding Principles.

Big Moves are inspired by more than one Guiding Principle



Big Moves

Guiding Principles

Protect and enhance the trees.

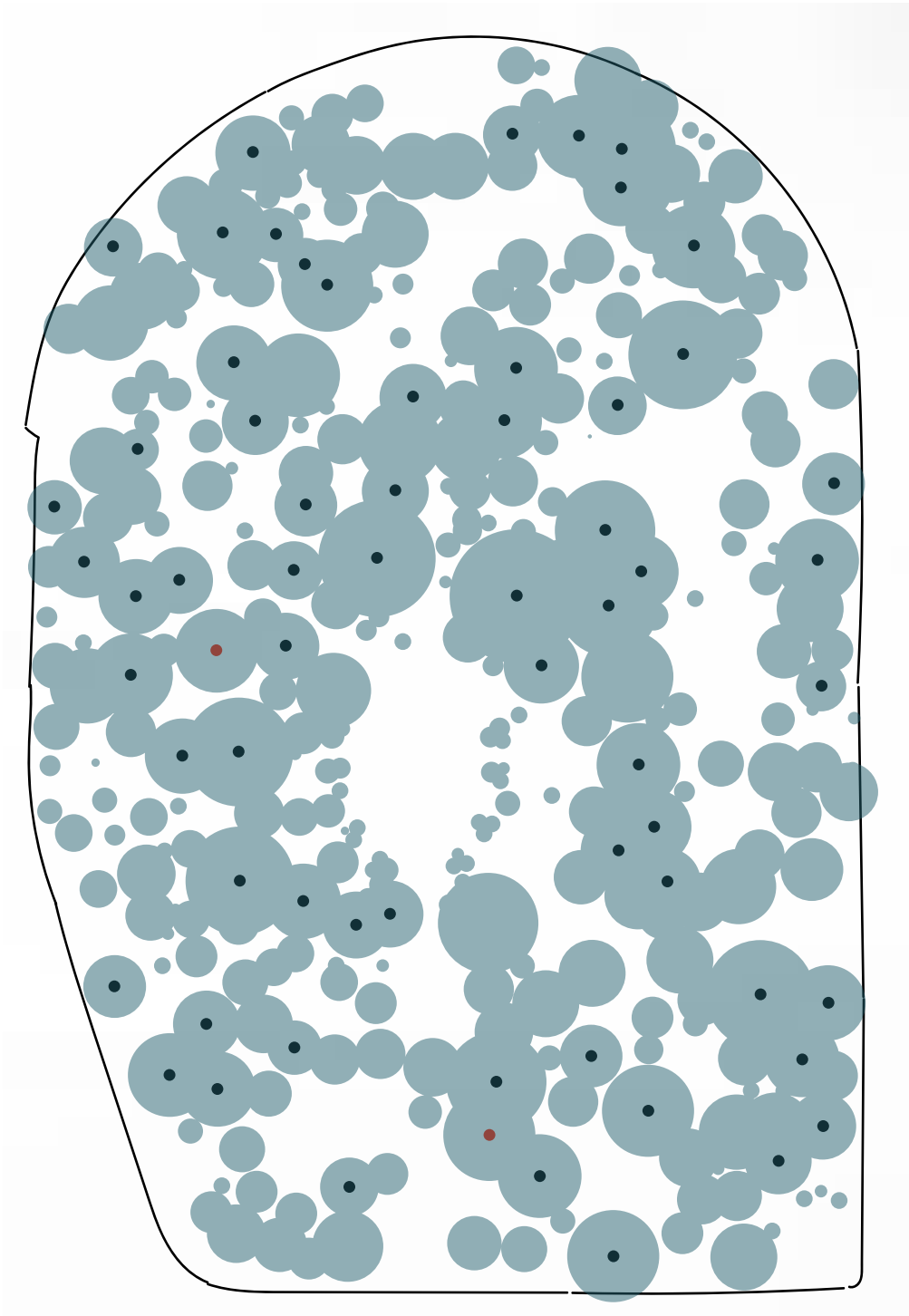
Enhance the visitor experience and animate the park year-round through improved amenities and modest programming.

Incorporate Indigenous ways of knowing and being.

Implement ecological and sustainable practices that restore the land, support plants and animal life, and enhance and expand ecological health and biodiversity.

Maintain Queen's Park as a public space and a place for both respite and civic life, welcoming to all.

Strengthen relationships between public space and institutional and community partners.



Implement enhanced tree maintenance practices and provide information on the trees and urban ecology, incorporating Indigenous ecological knowledge and practices

Big Moves

Guiding Principles

Protect and enhance the trees.

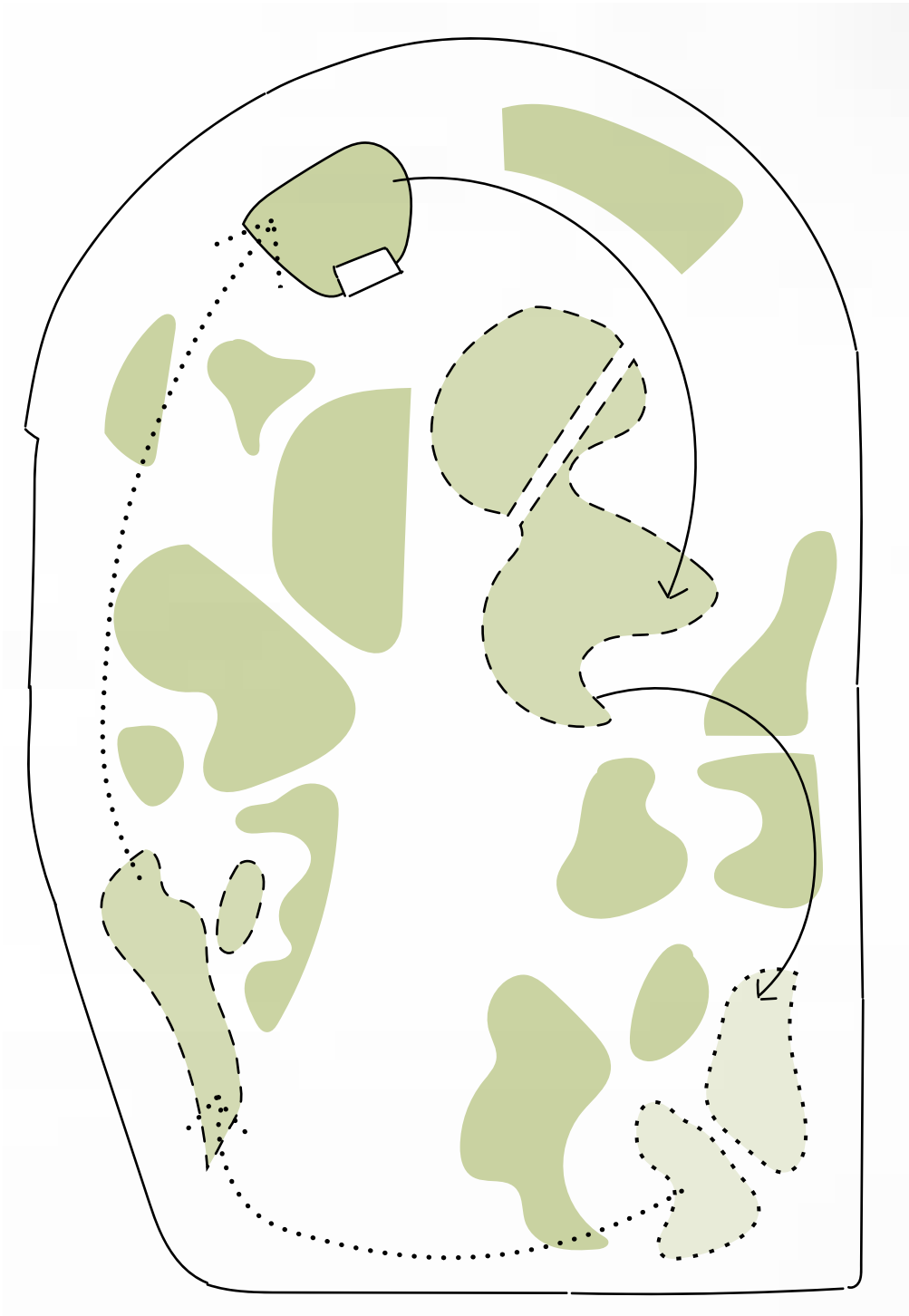
Enhance the visitor experience and animate the park year-round through improved amenities and modest programming.

Incorporate Indigenous ways of knowing and being.

Implement ecological and sustainable practices that restore the land, support plants and animal life, and enhance and expand ecological health and biodiversity.

Maintain Queen's Park as a public space and a place for both respite and civic life, welcoming to all.

Strengthen relationships between public space and institutional and community partners.



Integrate complementary understory plantings and more ecologically productive layers of landscape to increase biodiversity and reduce carbon intensive maintenance practices

Big Moves

Guiding Principles

Protect and enhance the trees.

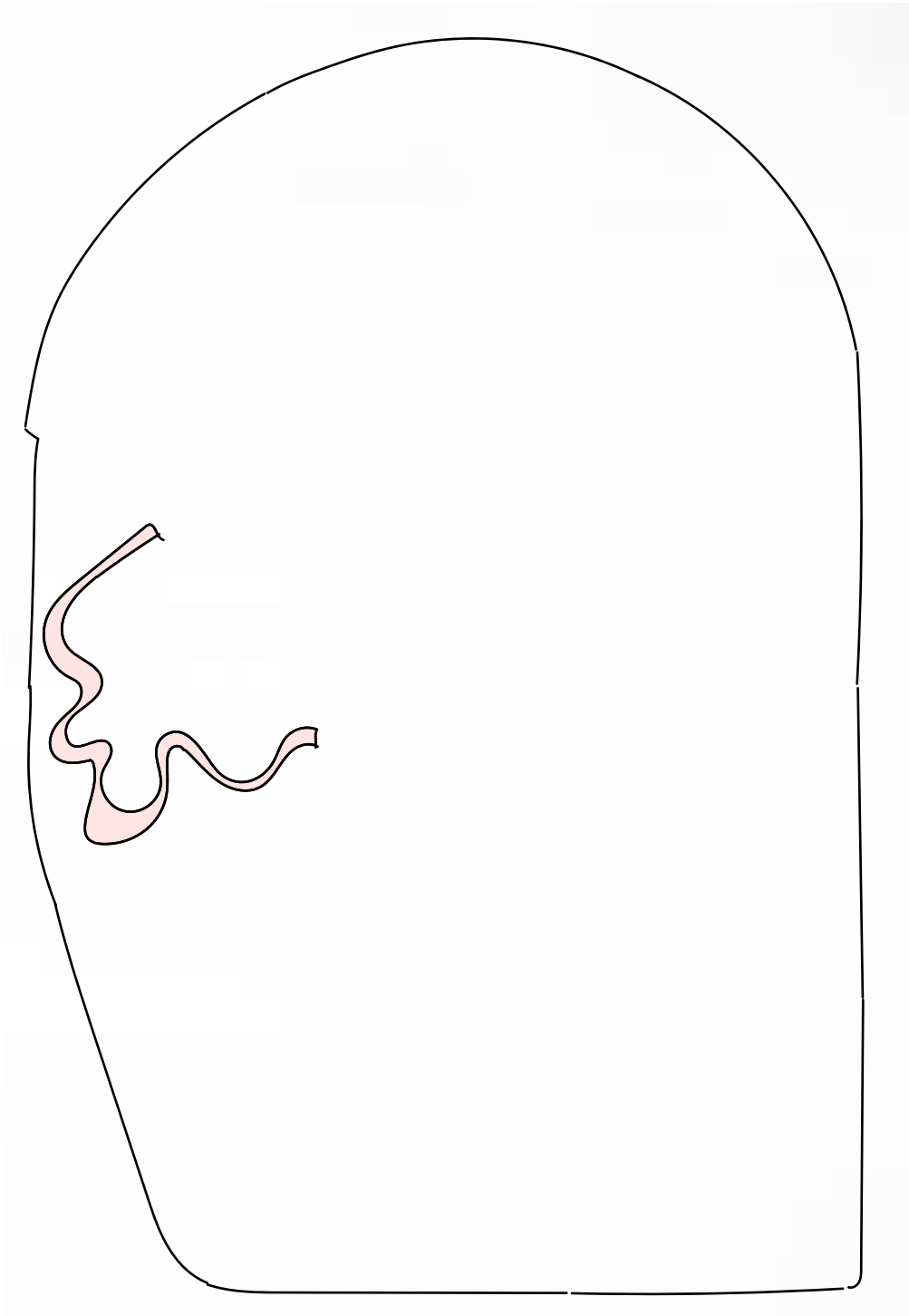
Enhance the visitor experience and animate the park year-round through improved amenities and modest programming.

Incorporate Indigenous ways of knowing and being.

Implement ecological and sustainable practices that restore the land, support plants and animal life, and enhance and expand ecological health and biodiversity.

Maintain Queen's Park as a public space and a place for both respite and civic life, welcoming to all.

Strengthen relationships between public space and institutional and community partners.



Build a treewalk beneath the canopy to foster education and play, and to help reduce compaction and impact on understory planting

Big Moves

Guiding Principles

Protect and enhance the trees.

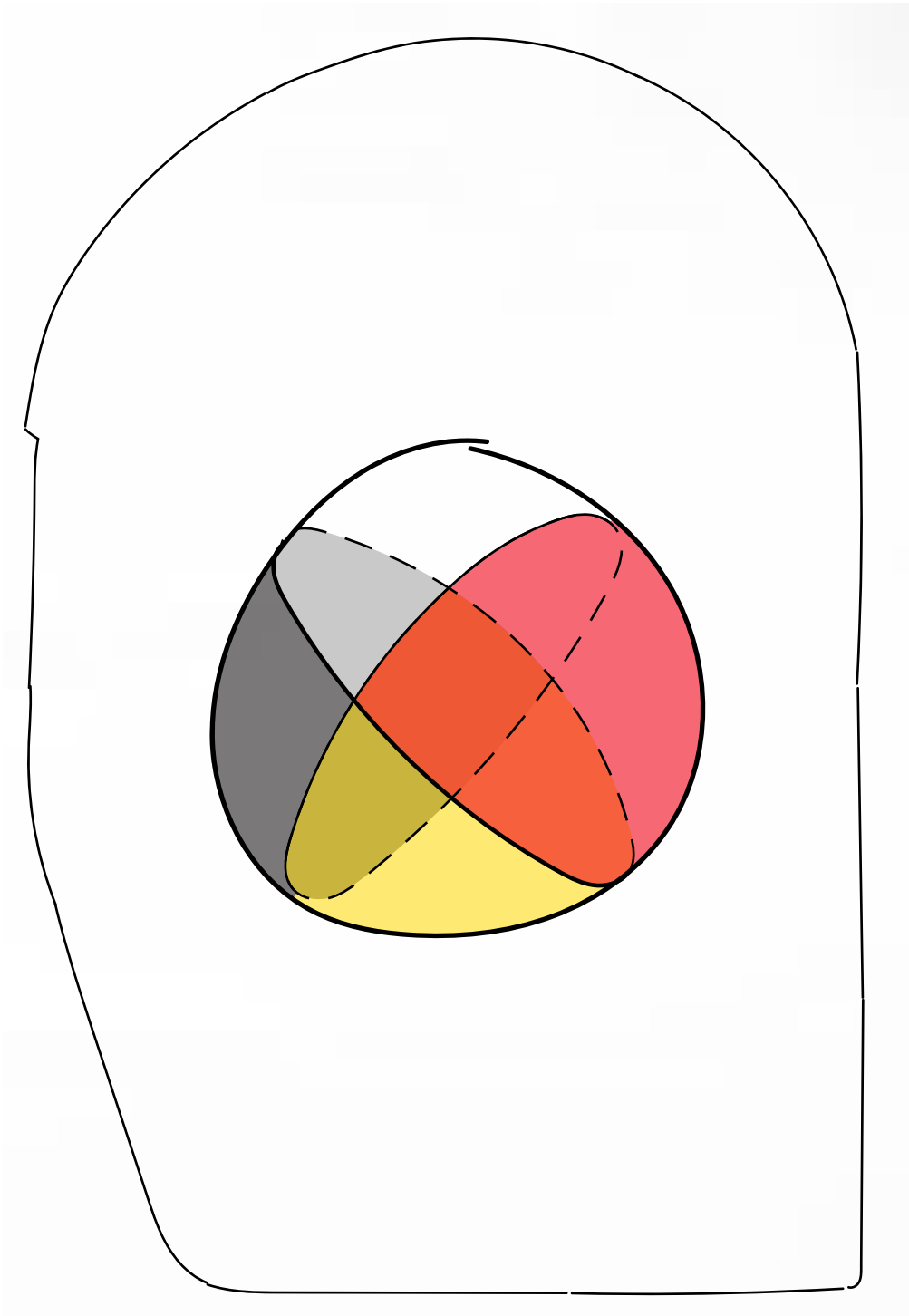
Enhance the visitor experience and animate the park year-round through improved amenities and modest programming.

Incorporate Indigenous ways of knowing and being.

Implement ecological and sustainable practices that restore the land, support plants and animal life, and enhance and expand ecological health and biodiversity.

Maintain Queen's Park as a public space and a place for both respite and civic life, welcoming to all.

Strengthen relationships between public space and institutional and community partners.



Provide features and spaces to support ceremony and celebrate the Indigenous ways of knowing and being and the Indigenous presence on these lands

Big Moves

Guiding Principles

Protect and enhance the trees.

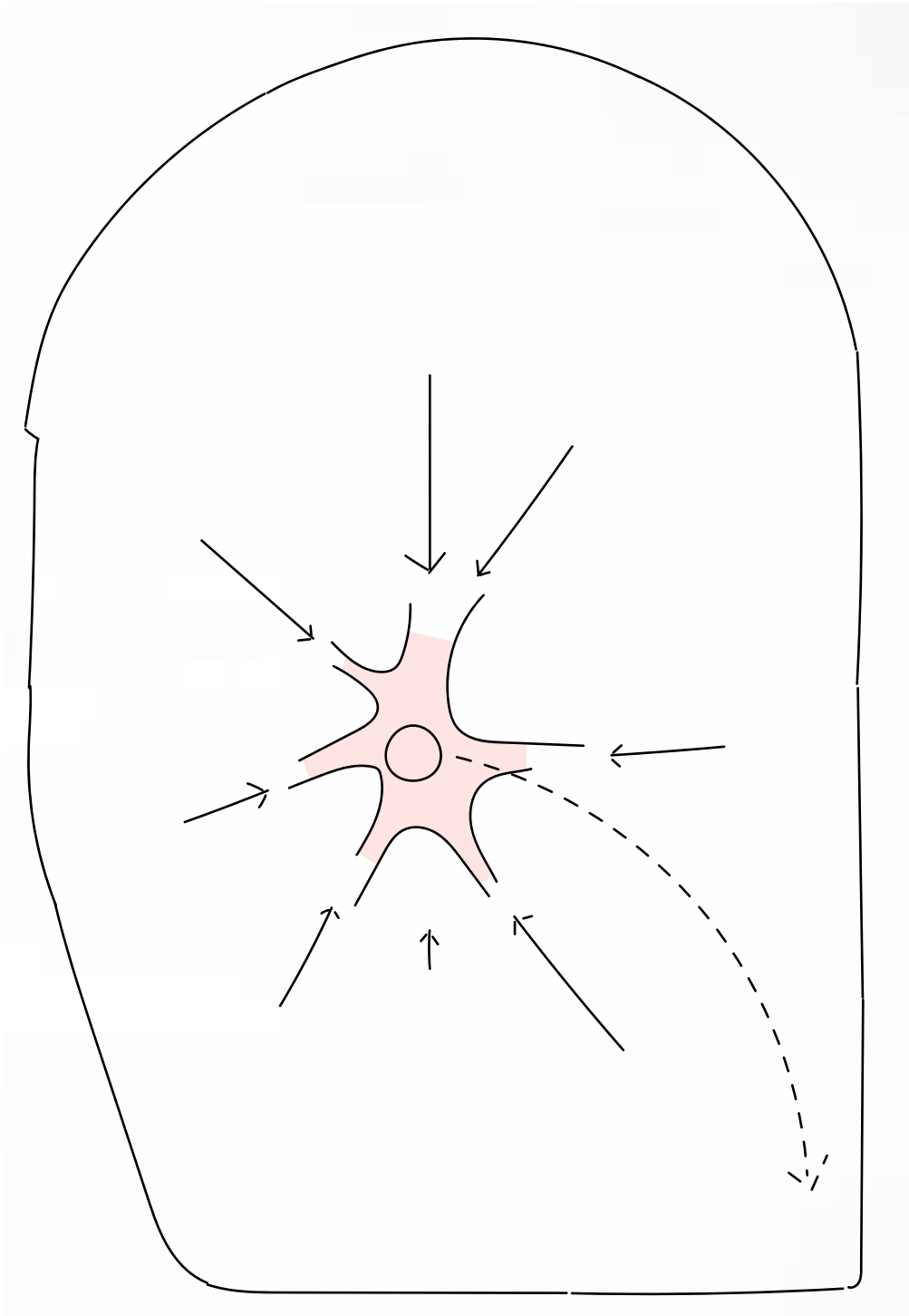
Enhance the visitor experience and animate the park year-round through improved amenities and modest programming.

Incorporate Indigenous ways of knowing and being.

Implement ecological and sustainable practices that restore the land, support plants and animal life, and enhance and expand ecological health and biodiversity.

Maintain Queen's Park as a public space and a place for both respite and civic life, welcoming to all.

Strengthen relationships between public space and institutional and community partners.



Animate the heart by moving the King Edward statue within the park grounds, creating a central space for people

Big Moves

Guiding Principles

Protect and enhance the trees

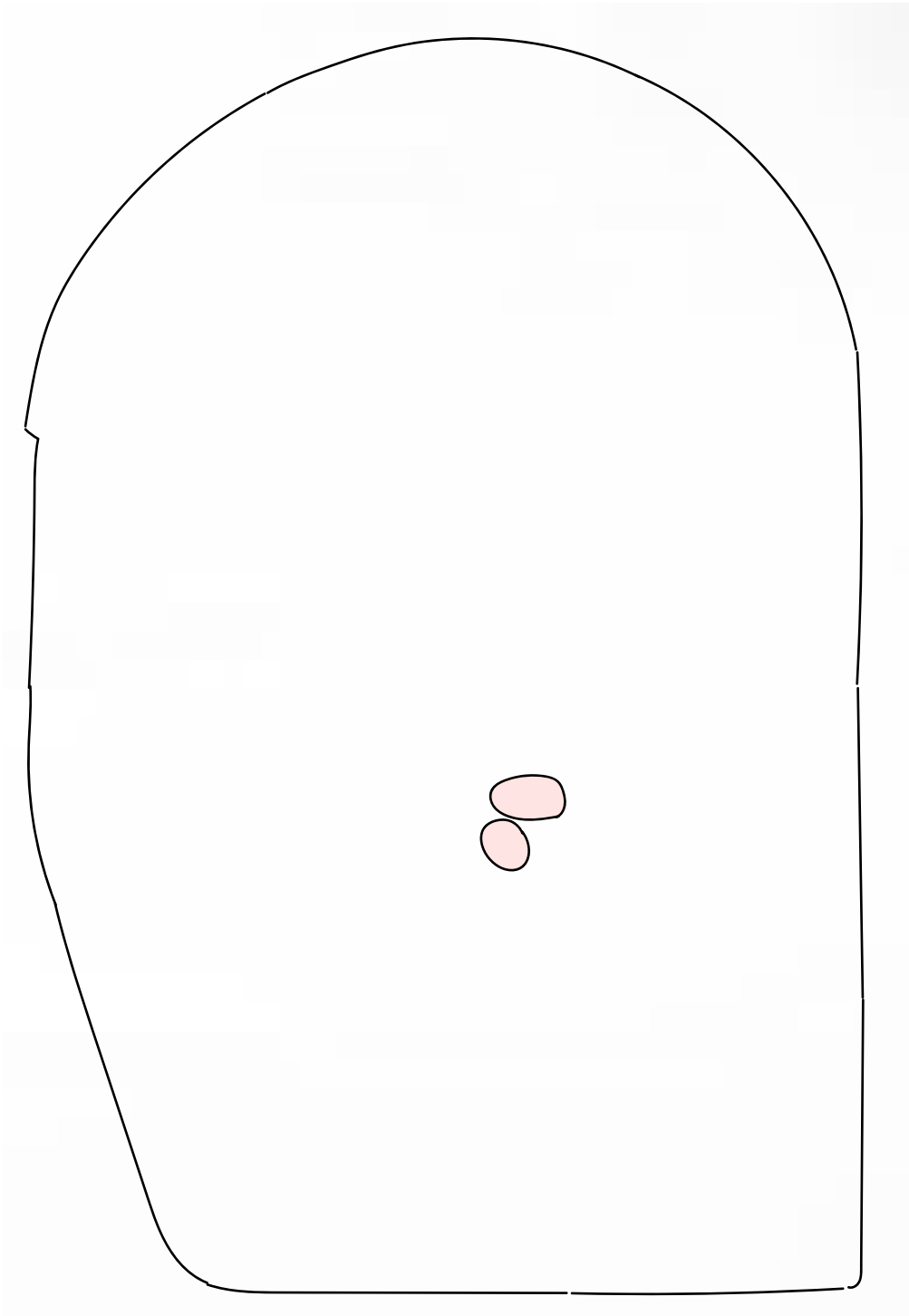
Enhance the visitor experience and animate the park year-round through improved amenities and modest programming.

Incorporate Indigenous ways of knowing and being.

Implement ecological and sustainable practices that restore the land, support plants and animal life, and enhance and expand ecological health and biodiversity.

Maintain Queen’s Park as a public space and a place for both respite and civic life, welcoming to all.

Strengthen relationships between public space and institutional and community partners.



Add a centrally located food and washrooms building(s) to provide new amenities

Big Moves

Guiding Principles

Protect and enhance the trees

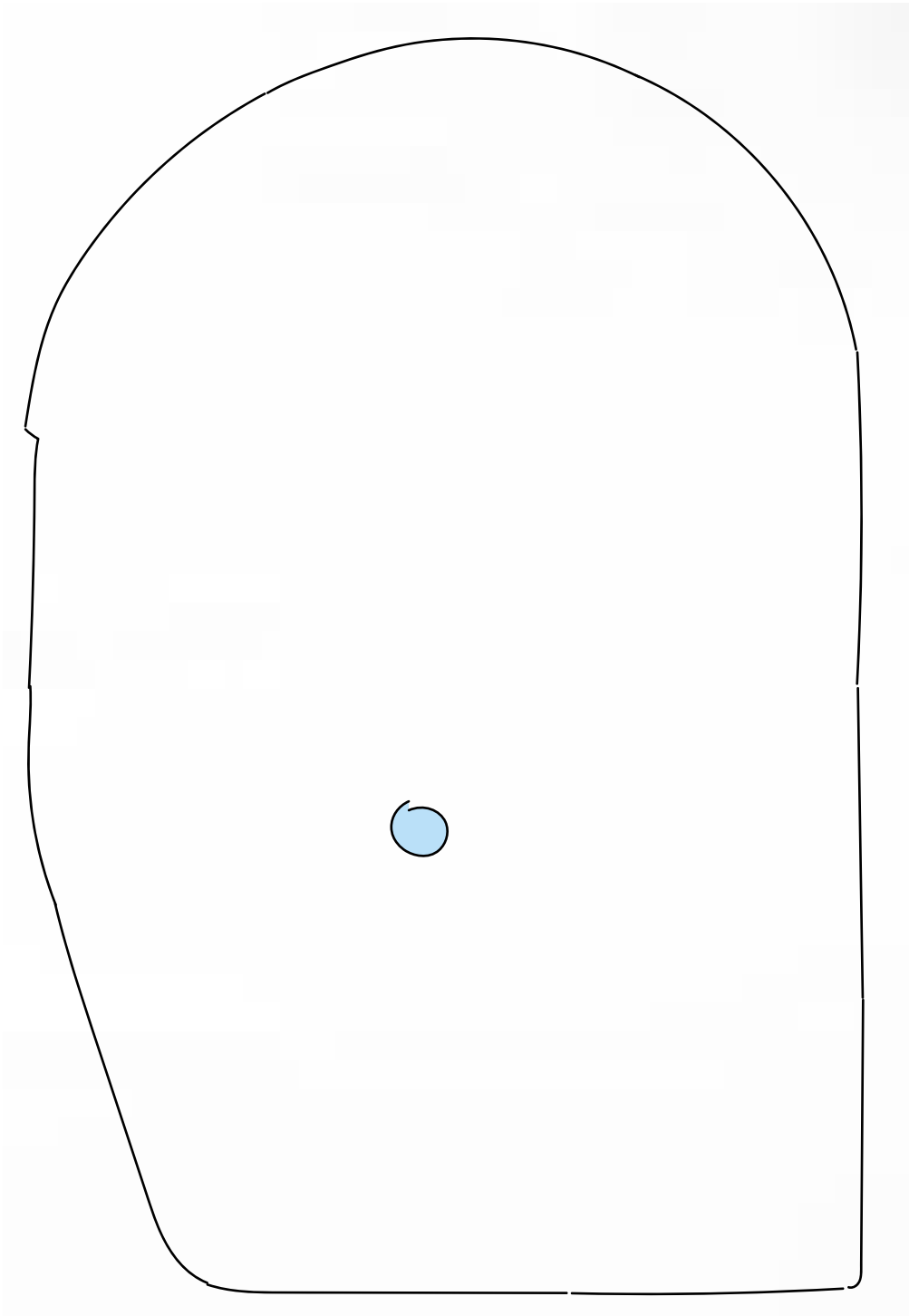
Enhance the visitor experience and animate the park year-round through improved amenities and modest programming.

Incorporate Indigenous ways of knowing and being.

Implement ecological and sustainable practices that restore the land, support plants and animal life, and enhance and expand ecological health and biodiversity.

Maintain Queen’s Park as a public space and a place for both respite and civic life, welcoming to all.

Strengthen relationships between public space and institutional and community partners.



Introduce a water feature within the park to create opportunities for interaction and seasonal interest

Big Moves

Guiding Principles

Protect and enhance the trees.

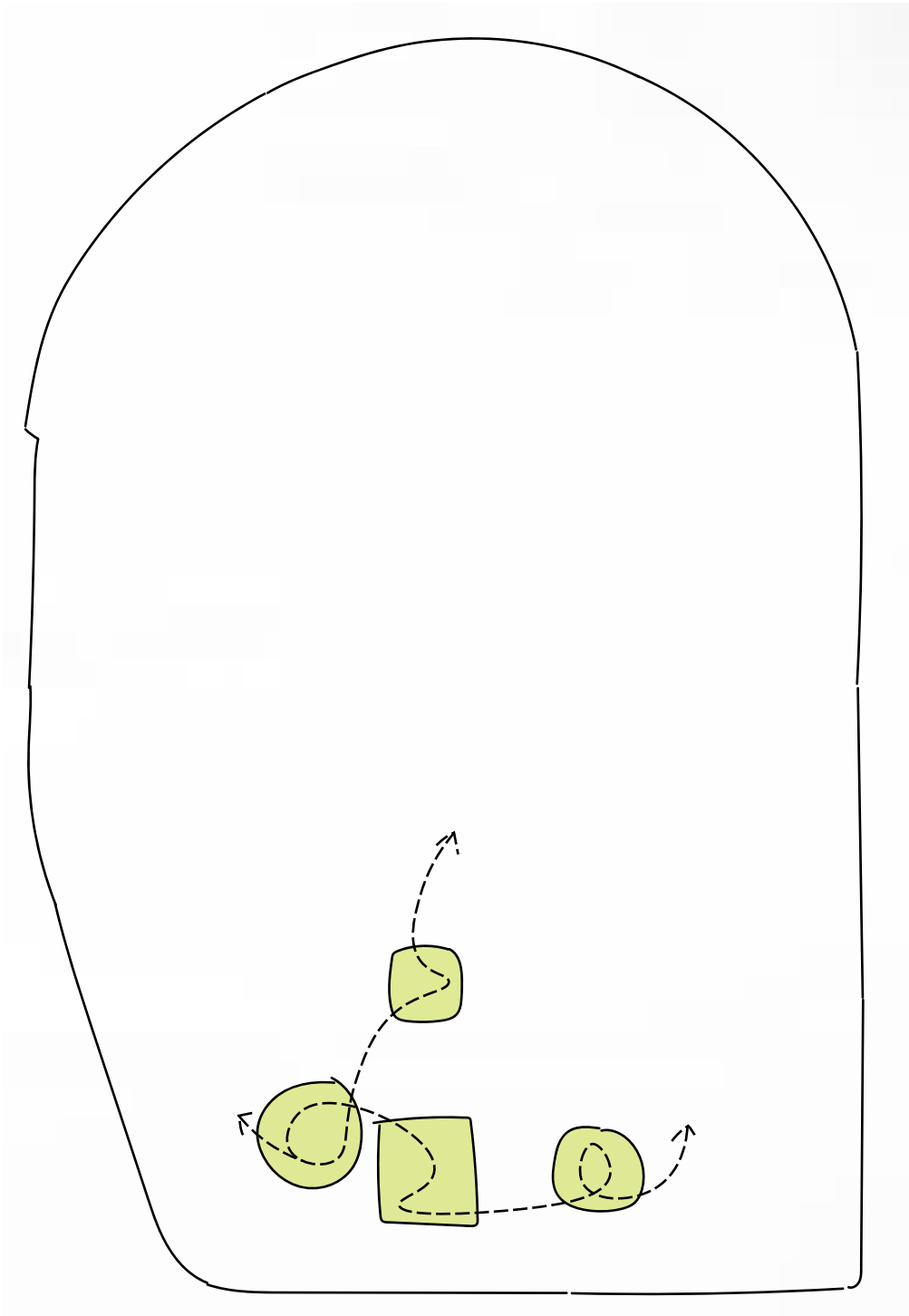
Enhance the visitor experience and animate the park year-round through improved amenities and modest programming.

Incorporate Indigenous ways of knowing and being.

Implement ecological and sustainable practices that restore the land, support plants and animal life, and enhance and expand ecological health and biodiversity.

Maintain Queen’s Park as a public space and a place for both respite and civic life, welcoming to all.

Strengthen relationships between public space and institutional and community partners.



A commemorative garden with welcoming and unique experiences.
A place for exploration, contemplation, and enjoyment for all

Big Moves

Guiding Principles

Protect and enhance the trees.

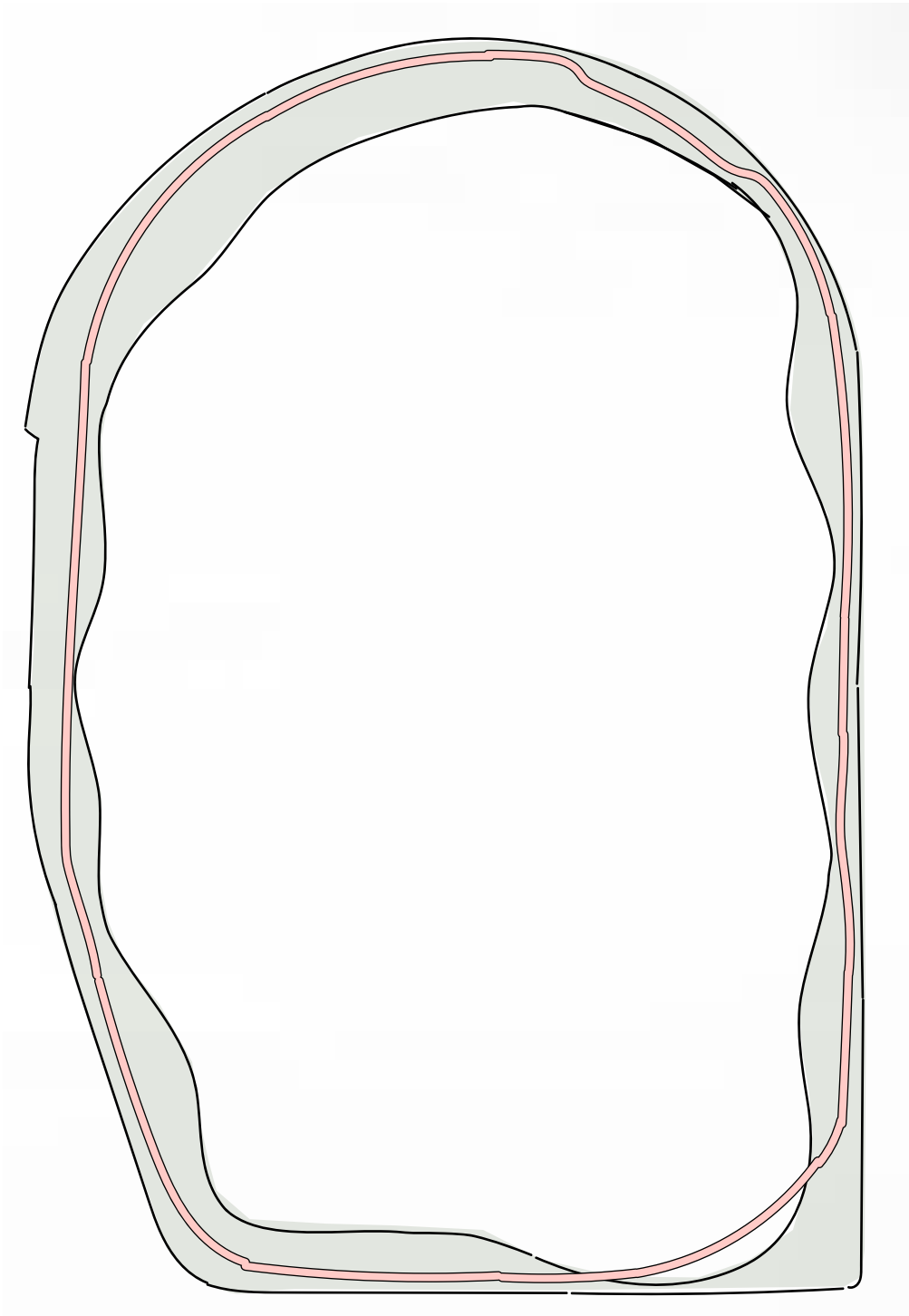
Enhance the visitor experience and animate the park year-round through improved amenities and modest programming.

Incorporate Indigenous ways of knowing and being.

Implement ecological and sustainable practices that restore the land, support plants and animal life, and enhance and expand ecological health and biodiversity.

Maintain Queen's Park as a public space and a place for both respite and civic life, welcoming to all.

Strengthen relationships between public space and institutional and community partners.



Enhance the park's edge with plantings and an improved running track

Big Moves

Guiding Principles

Protect and enhance the trees.

Enhance the visitor experience and animate the park year-round through improved amenities and modest programming.

Incorporate Indigenous ways of knowing and being.

Implement ecological and sustainable practices that restore the land, support plants and animal life, and enhance and expand ecological health and biodiversity.

Maintain Queen's Park as a public space and a place for both respite and civic life, welcoming to all.

Strengthen relationships between public space and institutional and community partners.

Improve entrances and connections into the park, including the subway station



Big Moves

Guiding Principles

Protect and enhance the trees.

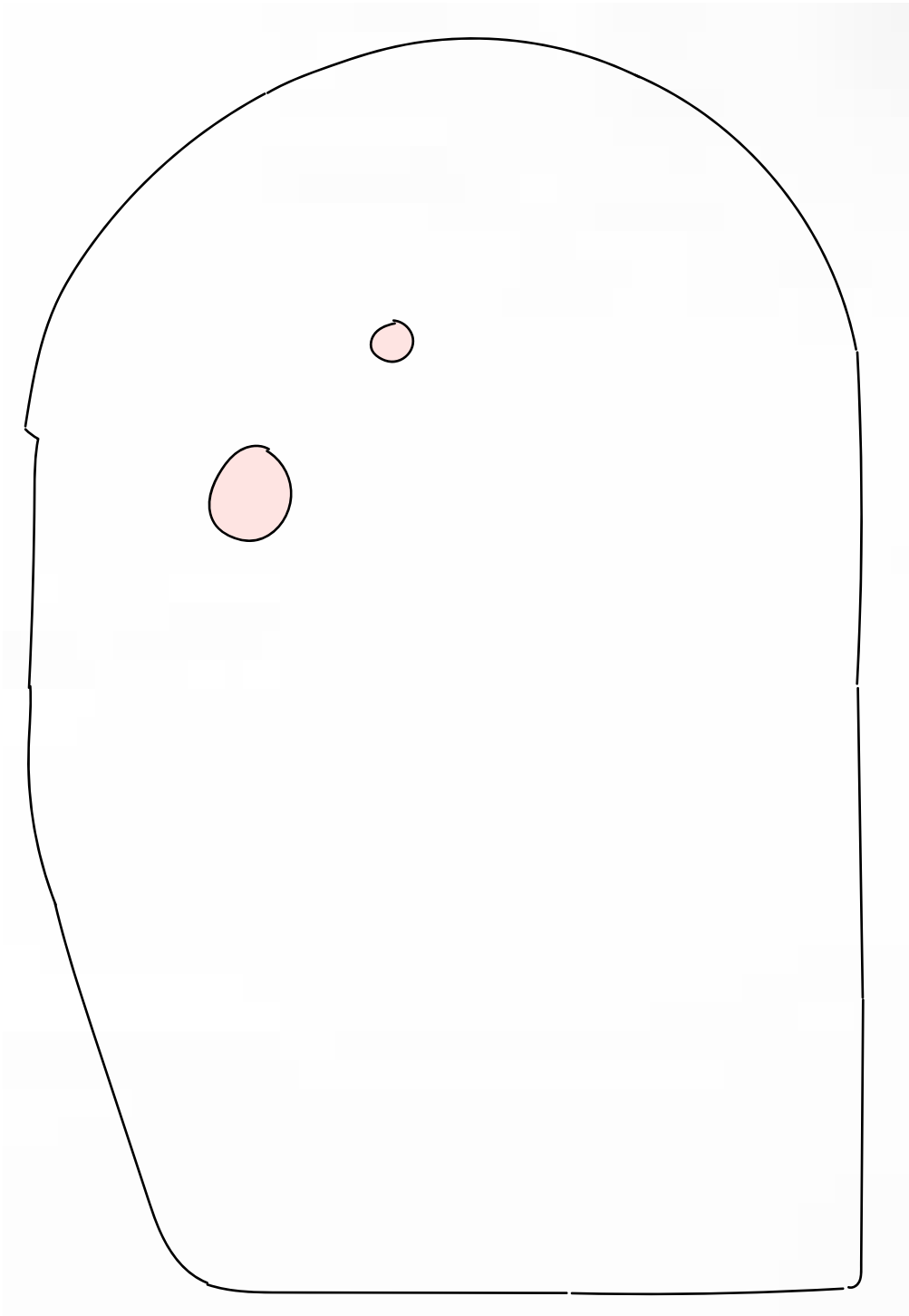
Enhance the visitor experience and animate the park year-round through improved amenities and modest programming.

Incorporate Indigenous ways of knowing and being.

Implement ecological and sustainable practices that restore the land, support plants and animal life, and enhance and expand ecological health and biodiversity.

Maintain Queen's Park as a public space and a place for both respite and civic life, welcoming to all.

Strengthen relationships between public space and institutional and community partners.



Add a kiosk at park gateway and shelter structure for community and cultural programming

Big Moves

Guiding Principles

Protect and enhance the trees.

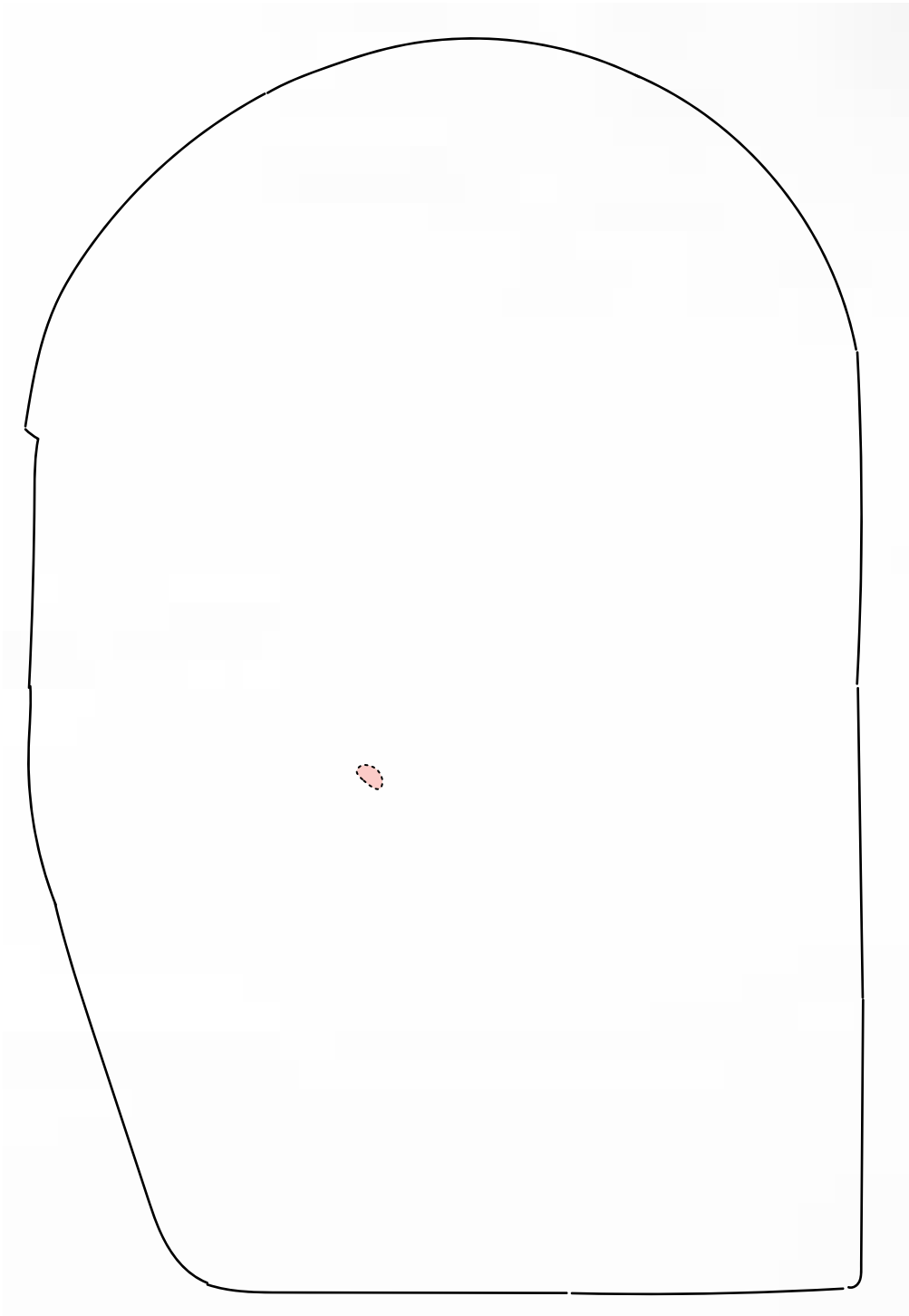
Enhance the visitor experience and animate the park year-round through improved amenities and modest programming.

Incorporate Indigenous ways of knowing and being.

Implement ecological and sustainable practices that restore the land, support plants and animal life, and enhance and expand ecological health and biodiversity.

Maintain Queen's Park as a public space and a place for both respite and civic life, welcoming to all.

Strengthen relationships between public space and institutional and community partners.



Provide flexible infrastructure for small events and winter animation

Big Moves

Guiding Principles

Protect and enhance the trees.

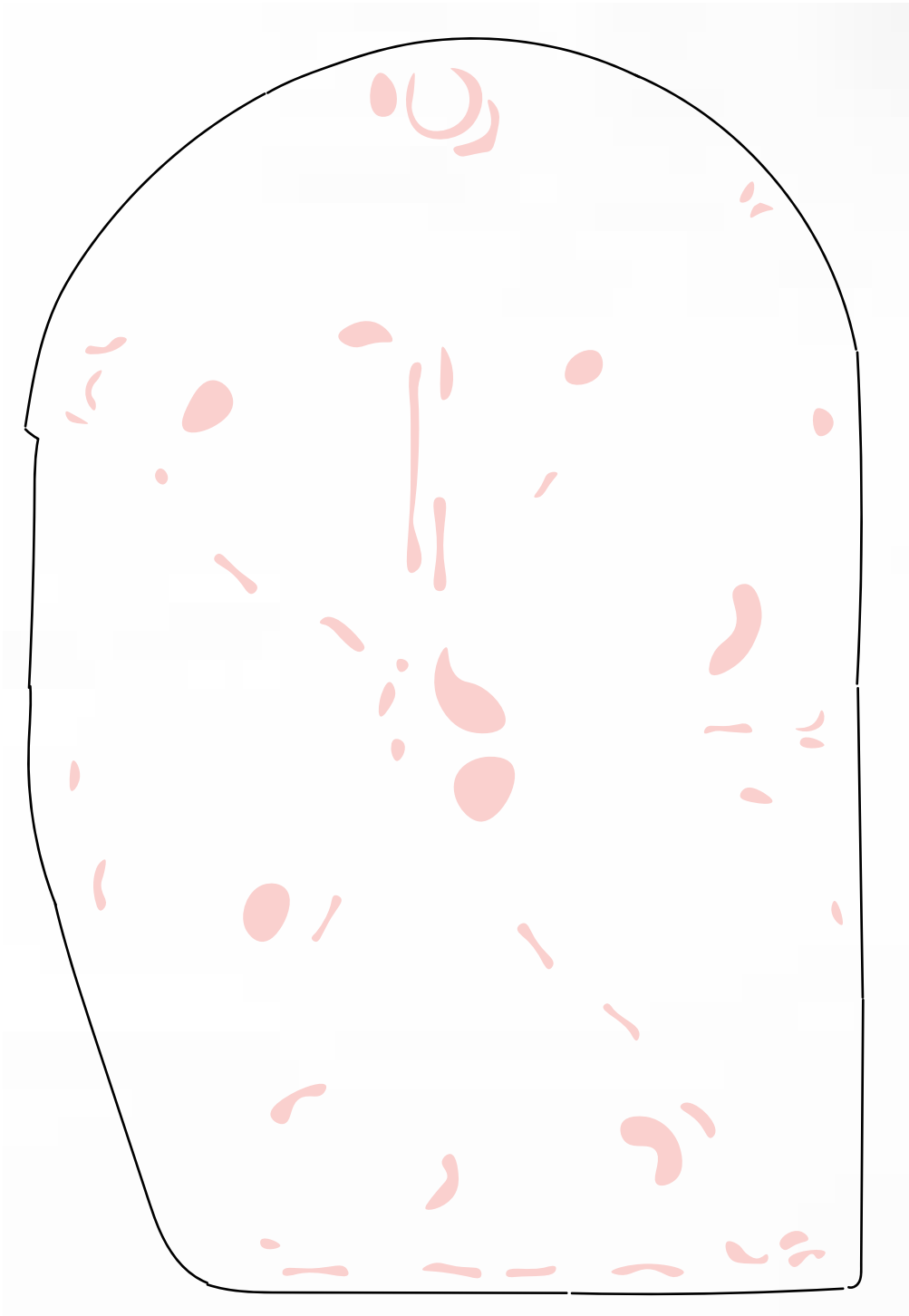
Enhance the visitor experience and animate the park year-round through improved amenities and modest programming .

Incorporate Indigenous ways of knowing and being.

Implement ecological and sustainable practices that restore the land, support plants and animal life, and enhance and expand ecological health and biodiversity.

Maintain Queen’s Park as a public space and a place for both respite and civic life, welcoming to all.

Strengthen relationships between public space and institutional and community partners.



Ensure a variety of accessible and welcoming seating options

Big Moves

Guiding Principles

Protect and enhance the trees.

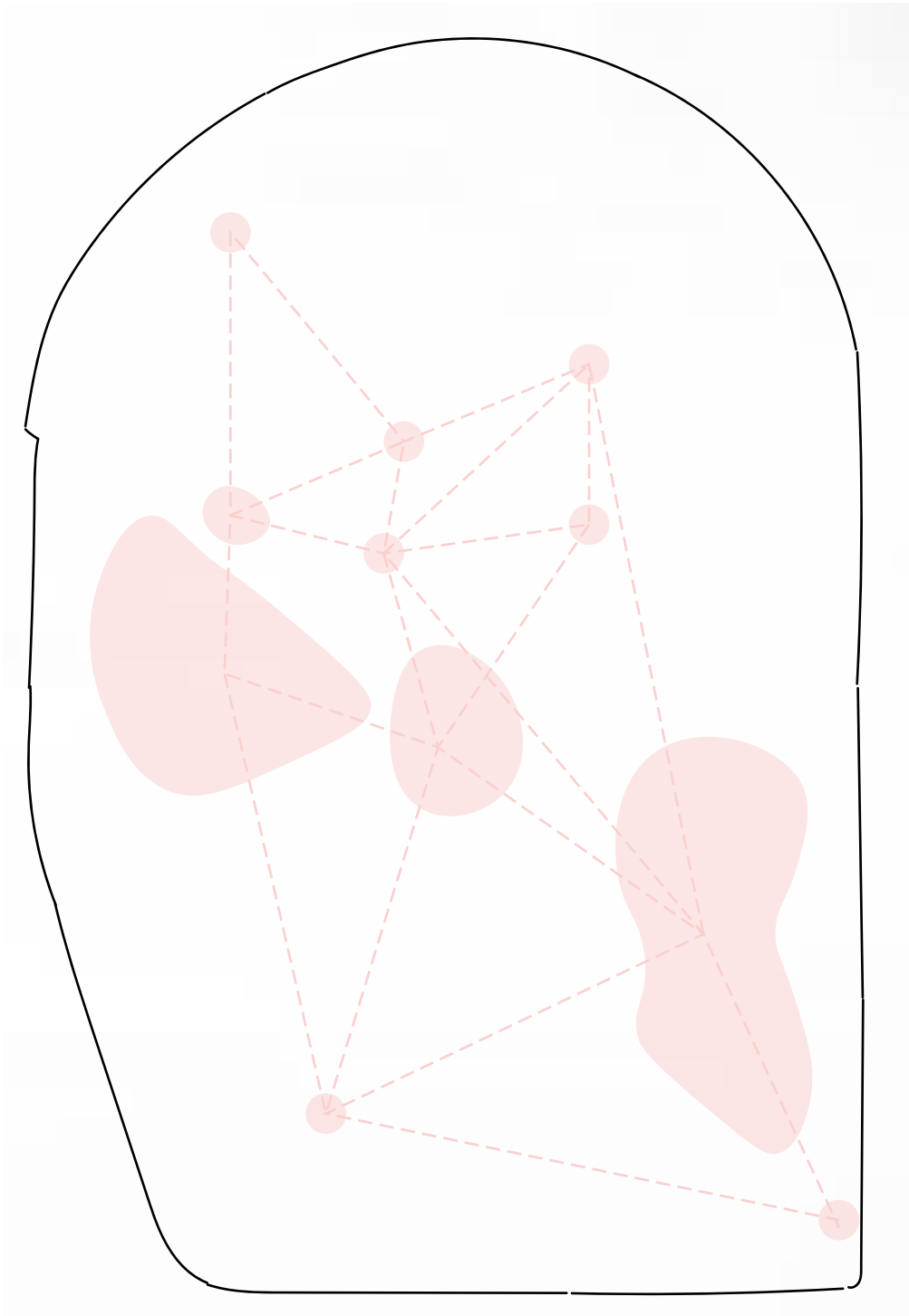
Enhance the visitor experience and animate the park year-round through improved amenities and modest programming.

Incorporate Indigenous ways of knowing and being.

Implement ecological and sustainable practices that restore the land, support plants and animal life, and enhance and expand ecological health and biodiversity.

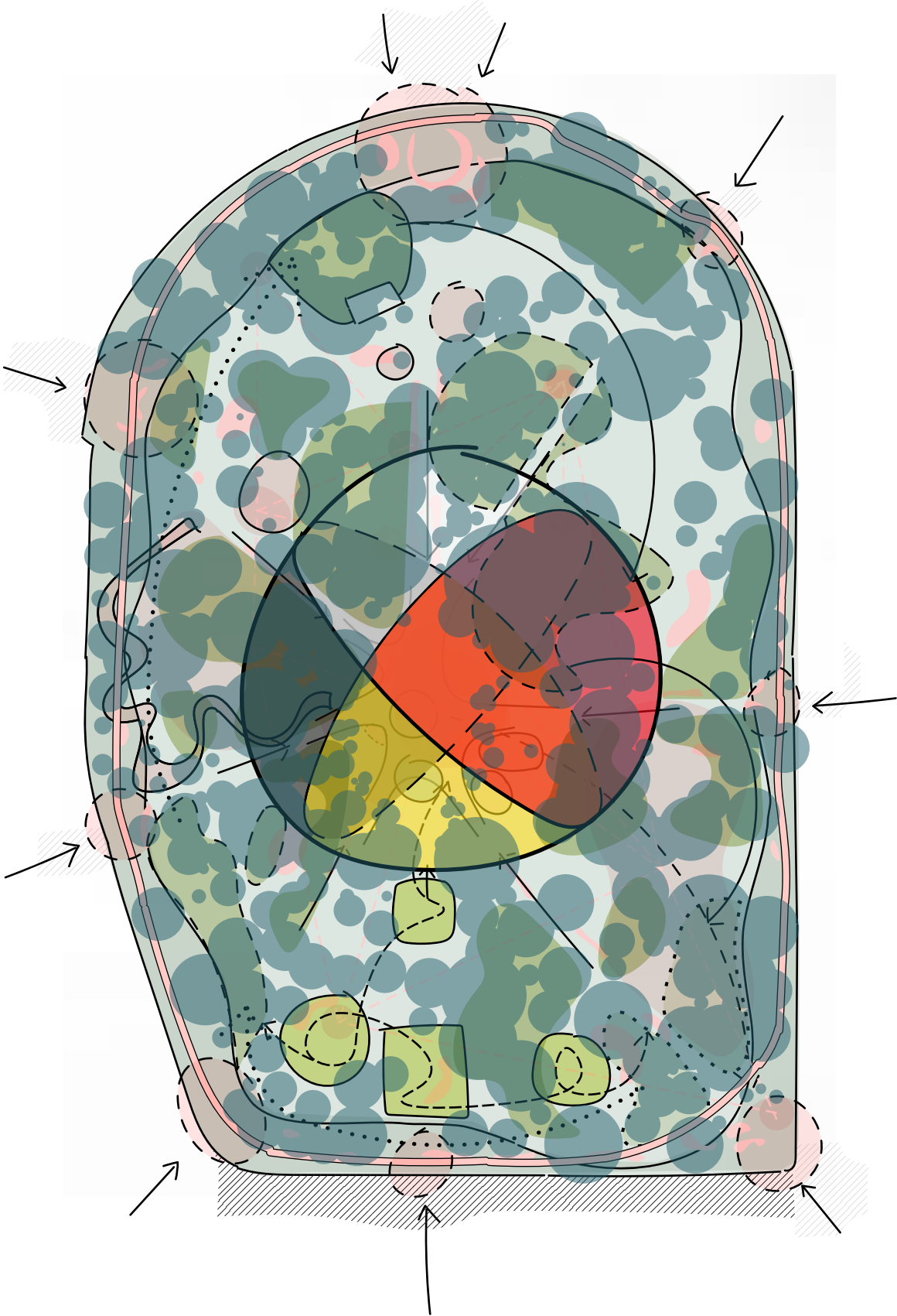
Maintain Queen's Park as a public space and a place for both respite and civic life, welcoming to all.

Strengthen relationships between public space and institutional and community partners.



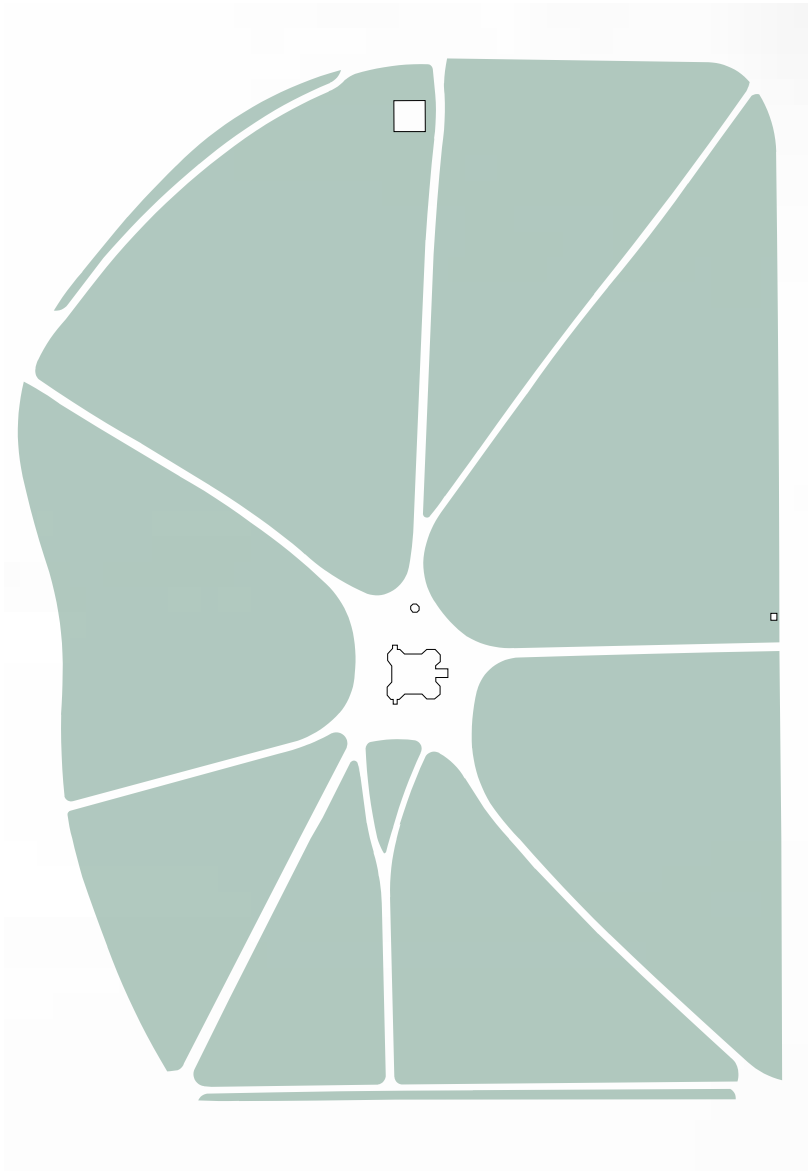
Provide opportunities and spaces for learning about regeneration, climate change adaptation, and habitat restoration

Big Moves

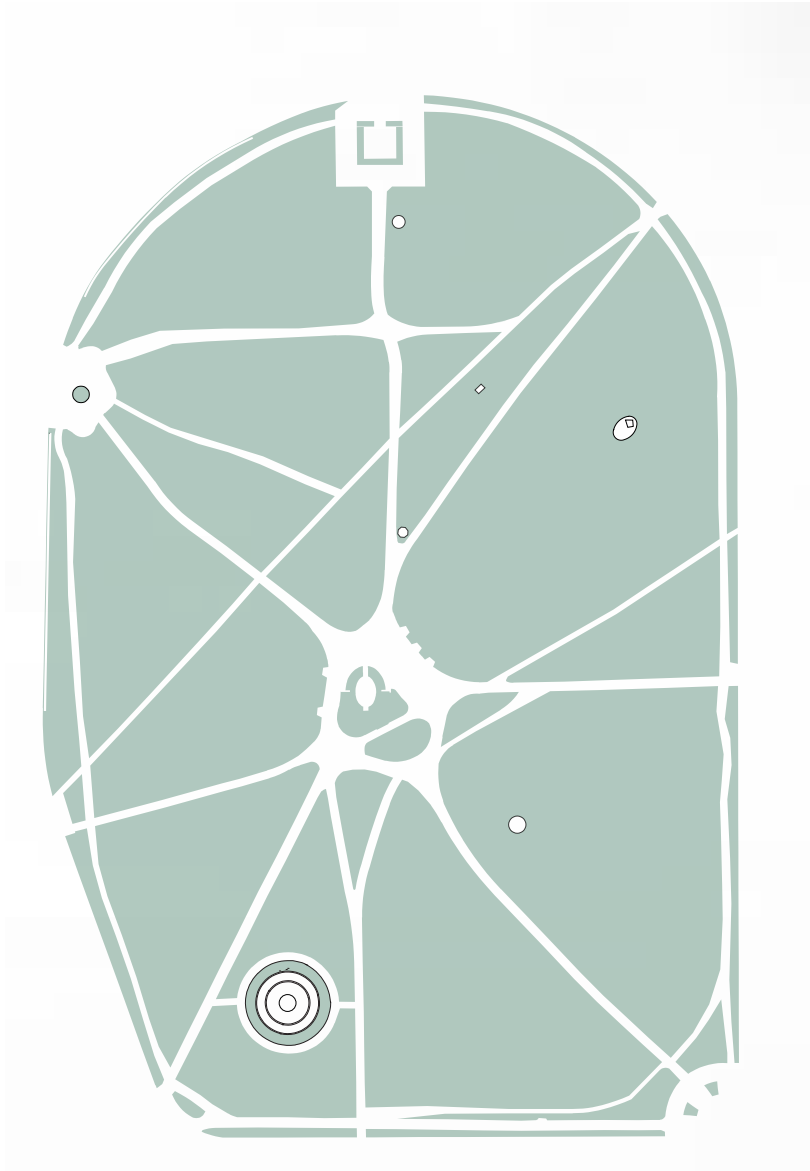


Draft Design Vision

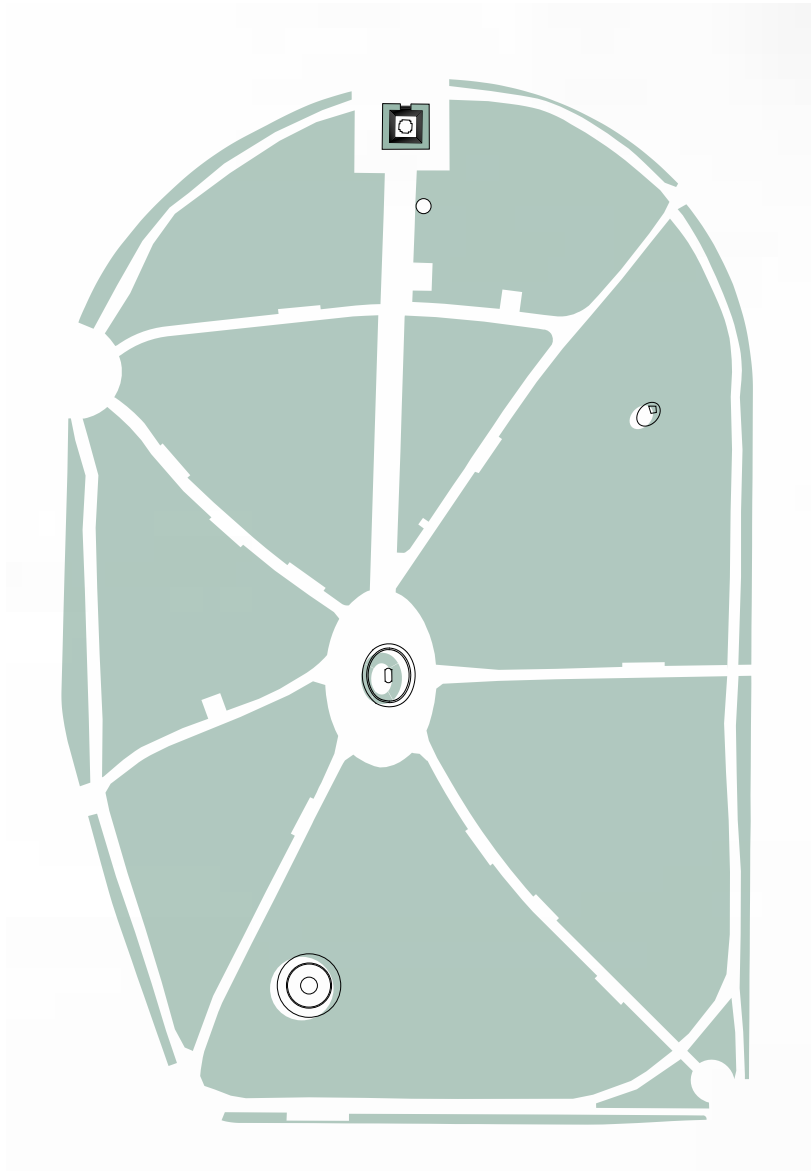
Draft Design | What Came Before



c. 1934

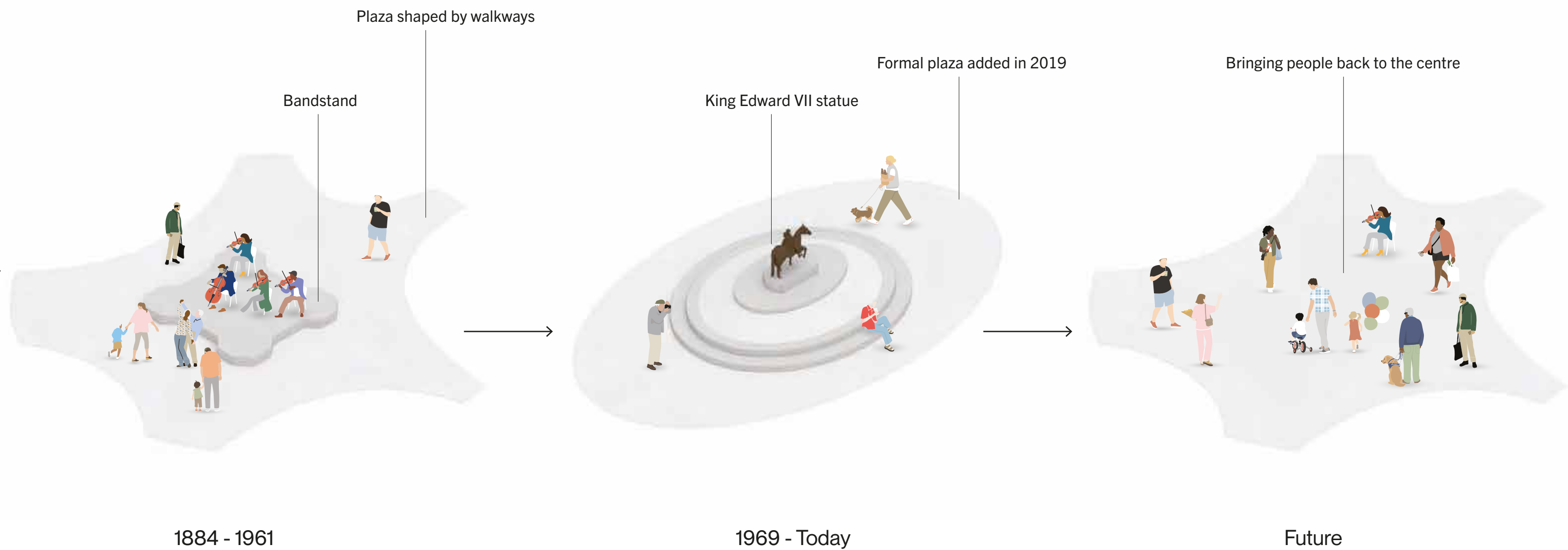


c. 2010



Today

Draft Design | Making Space for People and Trees



Draft Design | What Could Happen Here?

- Can we link ecology stewardship, investment, and program together to care for these trees for the next 100+ years?
- Can we create flexible and inclusive space that is welcoming to all?
- Can there be spaces to support community and culture, taking pressure off the trees?
- Can we reflect the relationships between people and place that shaped the park today?
- Can we create a truly democratic space?
- Can we create a space for meaningful dialogue?

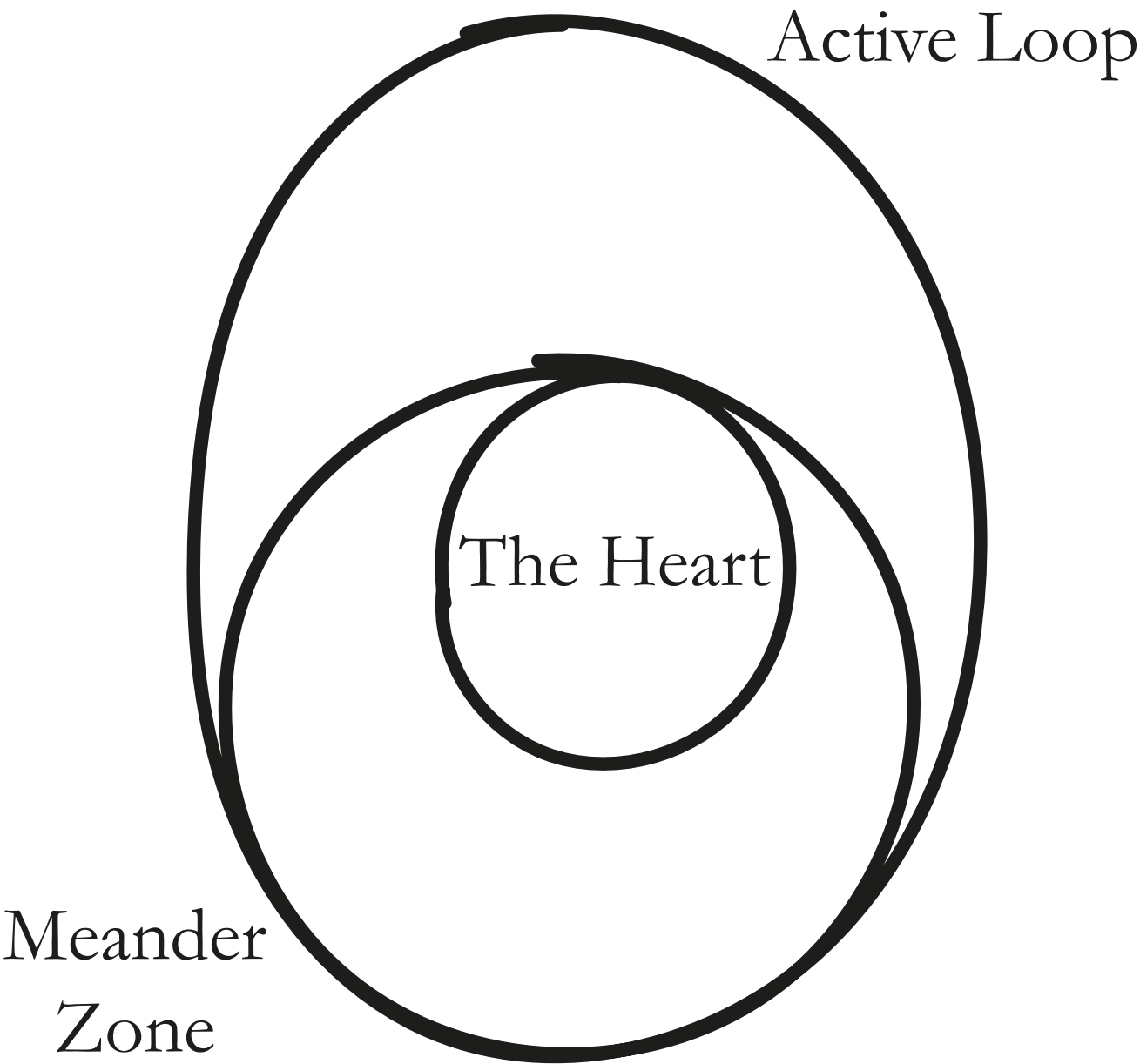
Queen's Park North Today



A Potential Queen's Park North Tomorrow



Three Park Zones



A Potential Framework for a Revitalized Queen's Park North



Park Areas

Plant Communities

Unified

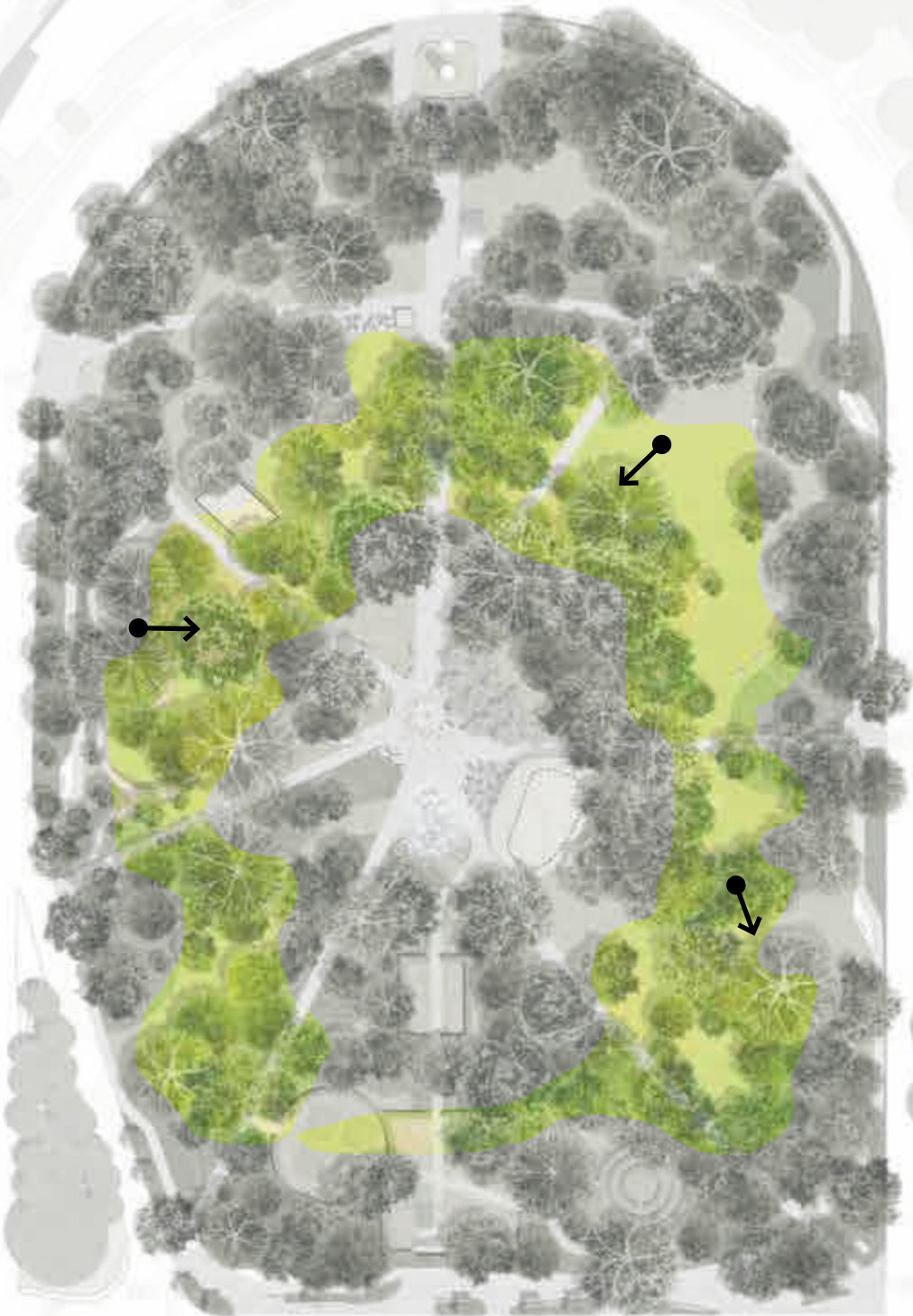
Programmed Space

- Interactive Water
- Architectural Structures
- Flexible Performance Platform
- Tree Walk
- Flexible Lawn
- Commemorative Garden
- Flexible Plaza
- Meander Zone (mown paths)

Seating Type

- Entrance
- Corridor
- Active Rest
- Picnic
- Flexible

- White Oak Savanna
- Food Forest
- Carolinian Forest Reference System
- Forest Edge
- Garden





In Queen's Park, Toronto.

101,803. (J.V.)

Draft Design | Meander Zone



Opportunities for shaded rest and respite



Improved and flexible lawn areas



Resilient understory plantings



Temporary infrastructure for observing ongoing restoration efforts and ecological processes



Treewalk



Increased plant diversity including native herbaceous perennials and pollinators

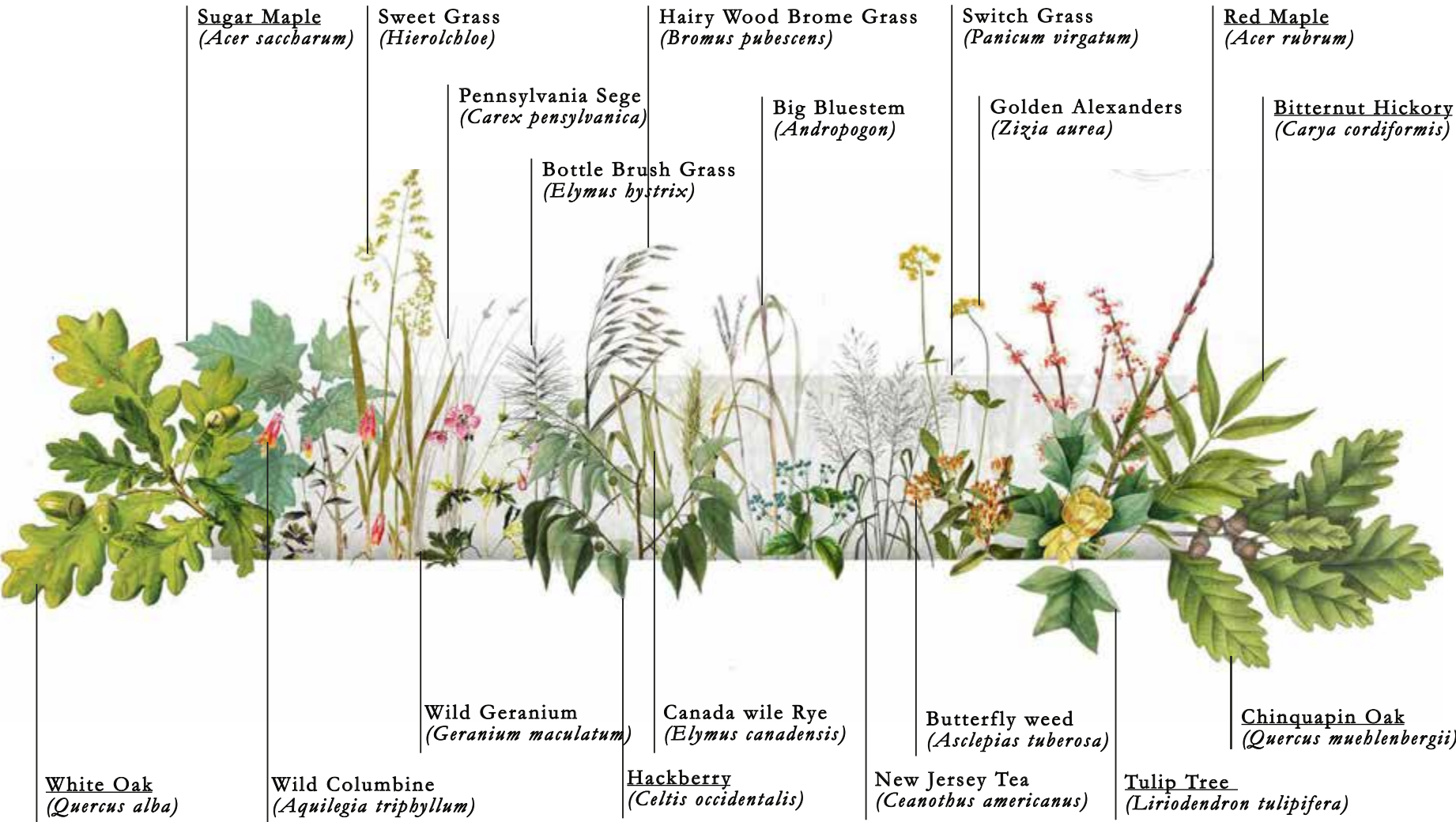


Opportunities and structures to support education and programming



Contemplative elements

Draft Design | White Oak Savanna



Draft Design | White Oak Savanna



Late
Successional
Canopy

Early
Successional
Growth

Grass, Meadow
& Perennial

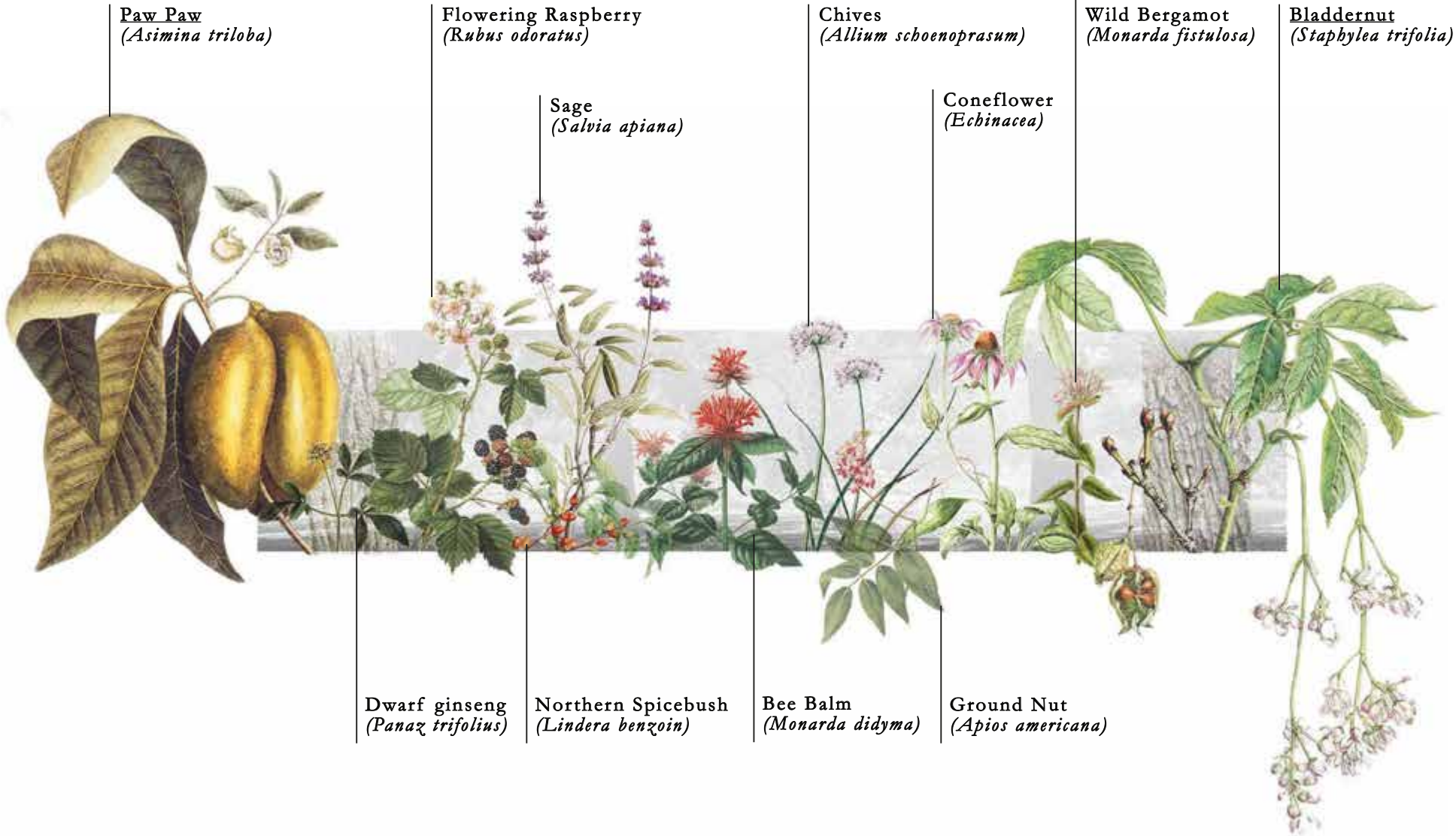






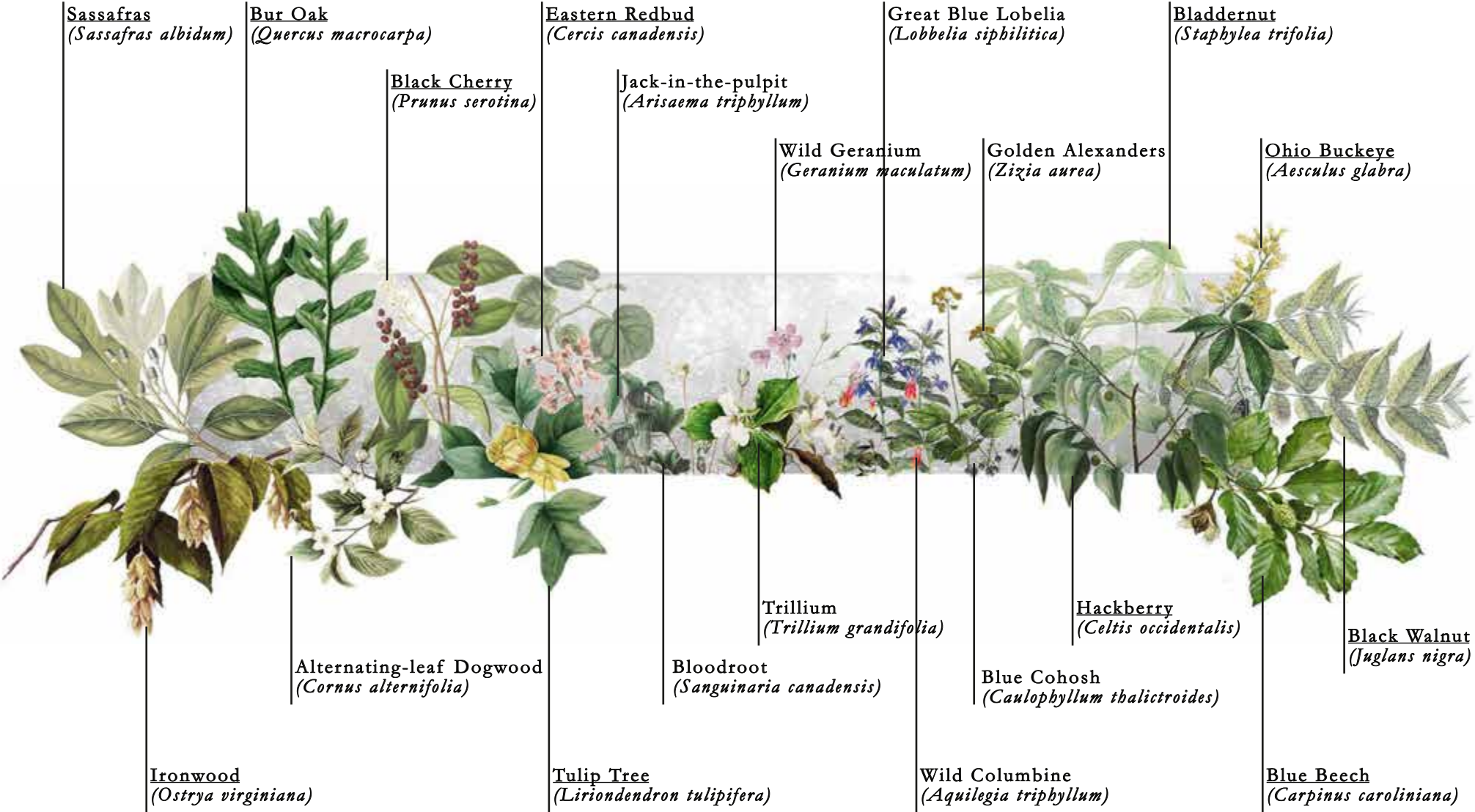


Draft Design | Food Forest





Draft Design | Carolinian Forest

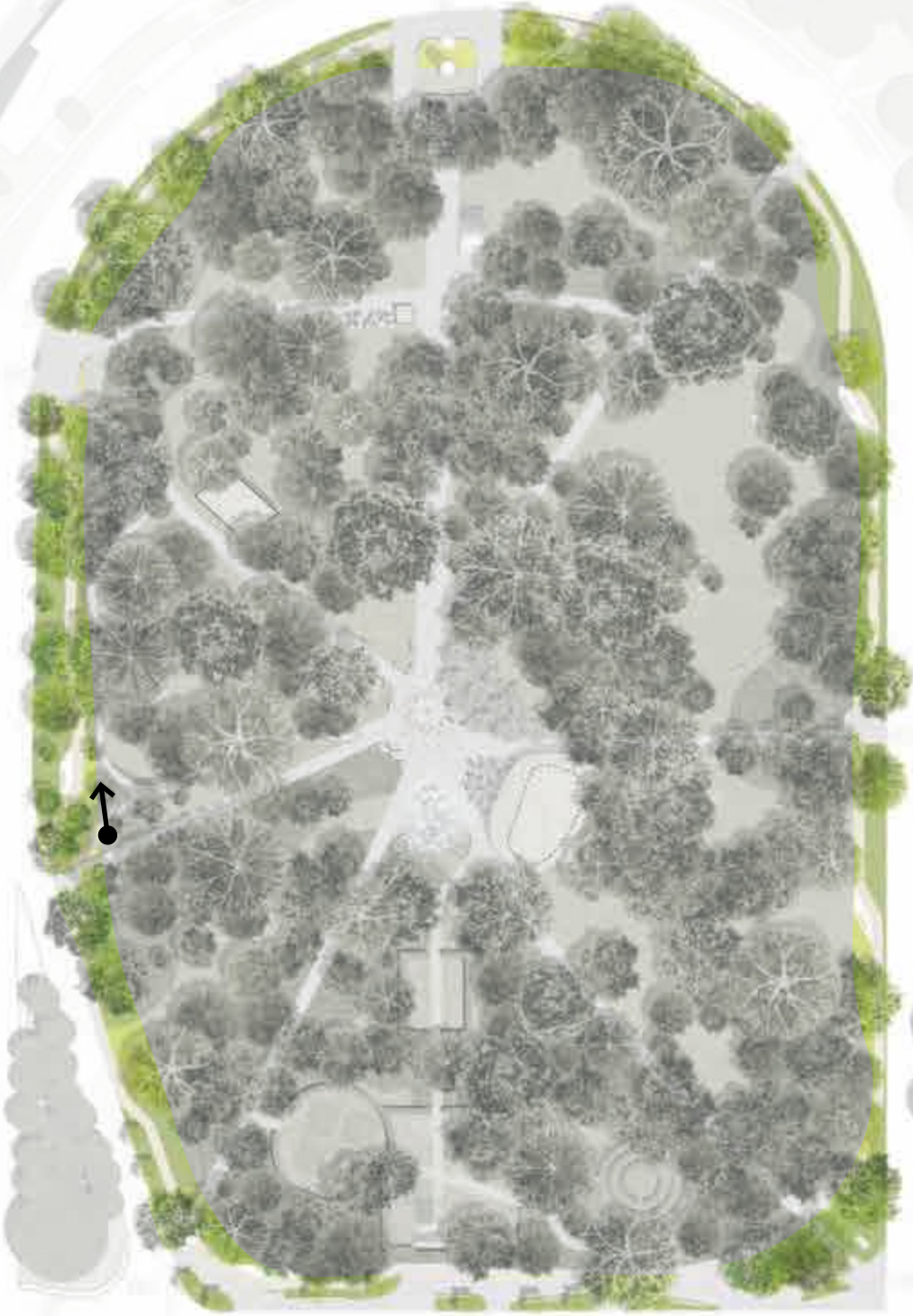


Draft Design | Carolinian Forest











Draft Design | Active Loop



Enhanced park entrances



Wellesley St improvements offering a variety of accessible seating options



Improved running track



Moments for rest along active loop



Softened park edge with new tree and understory plantings

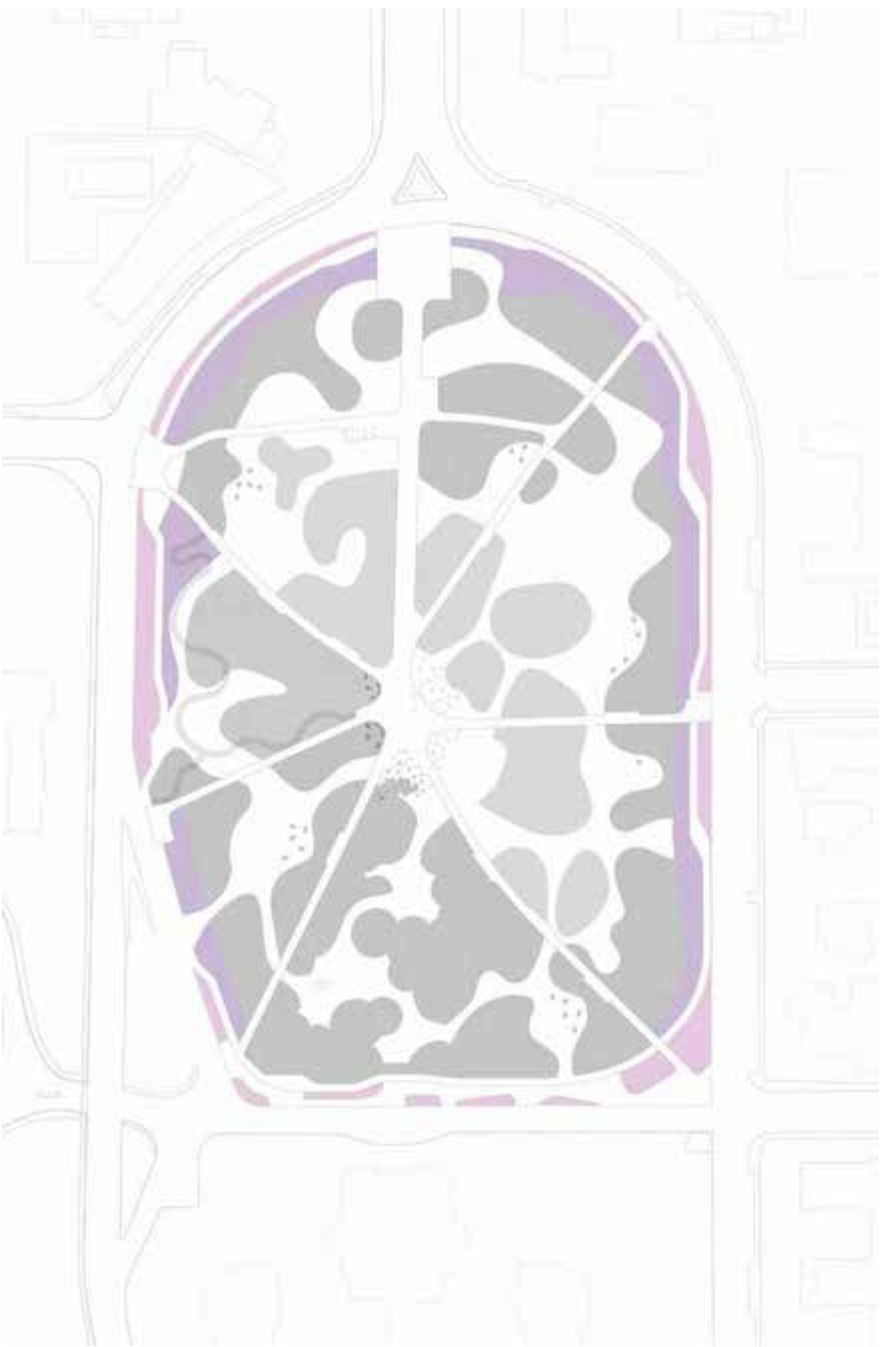
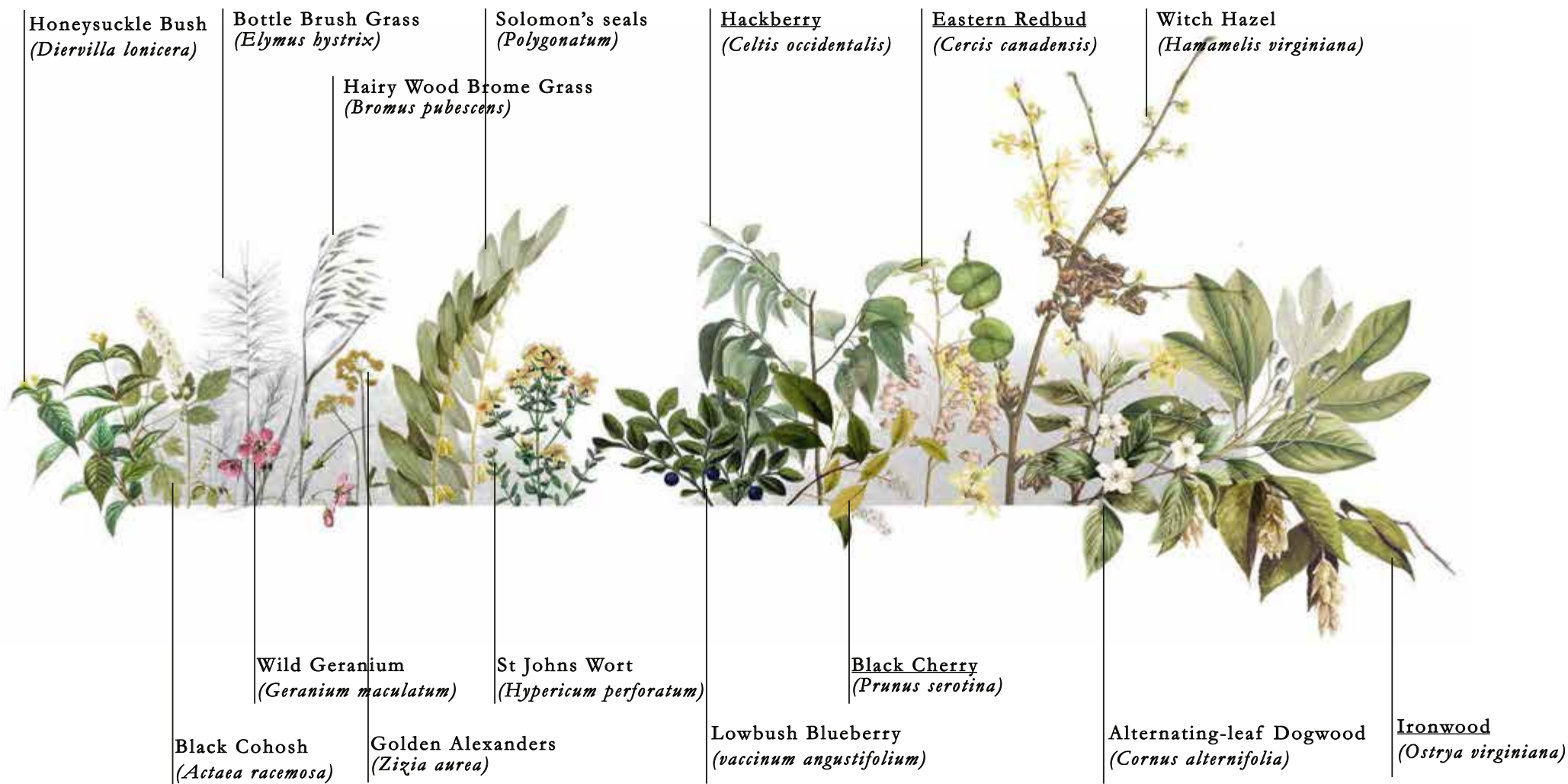


Scenic route around the park for all visitors



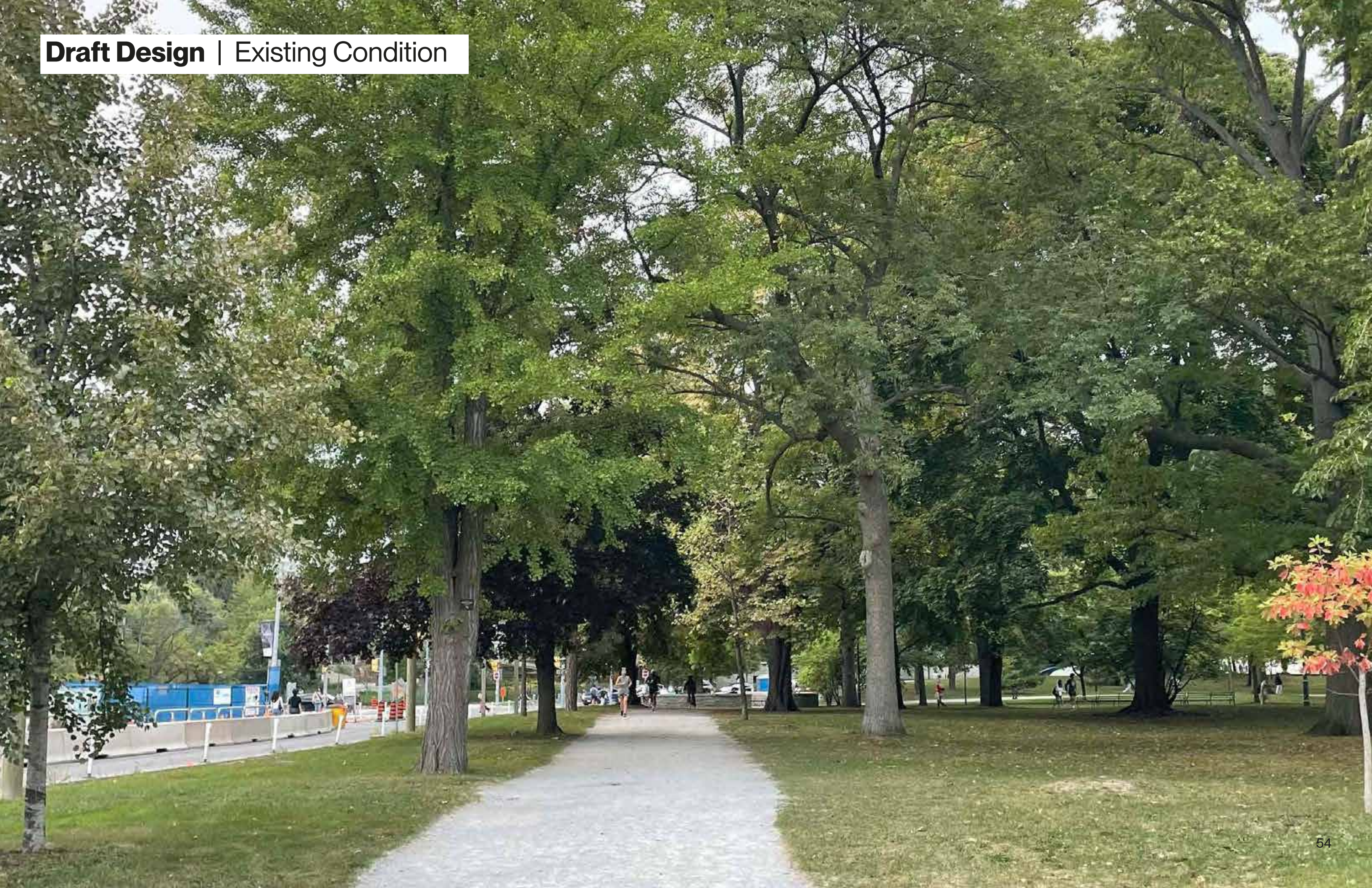
Enhanced park entrances

Draft Design | Forest Edge (Novel Ecosystem)

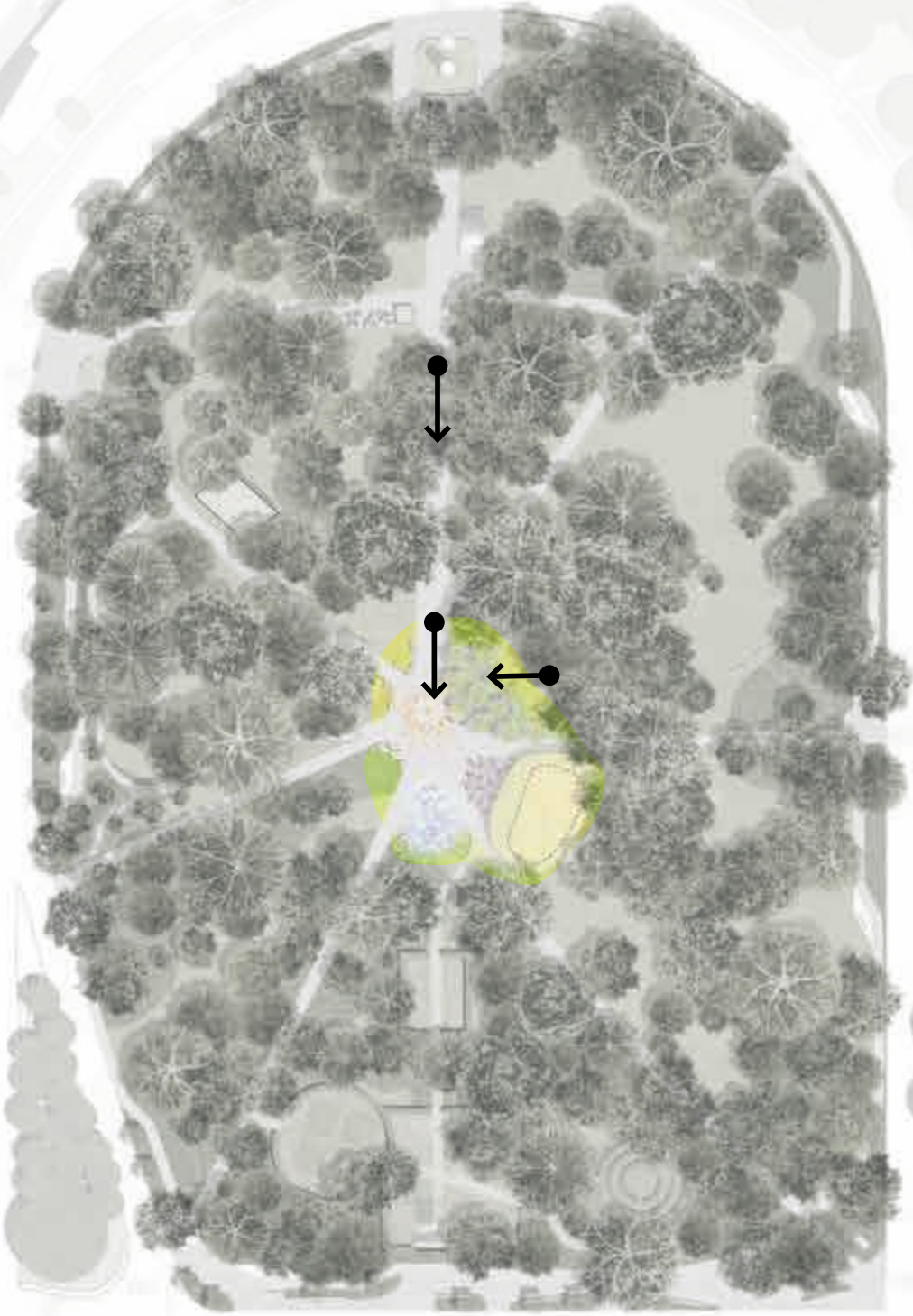


Draft Design | Forest Edge Structure







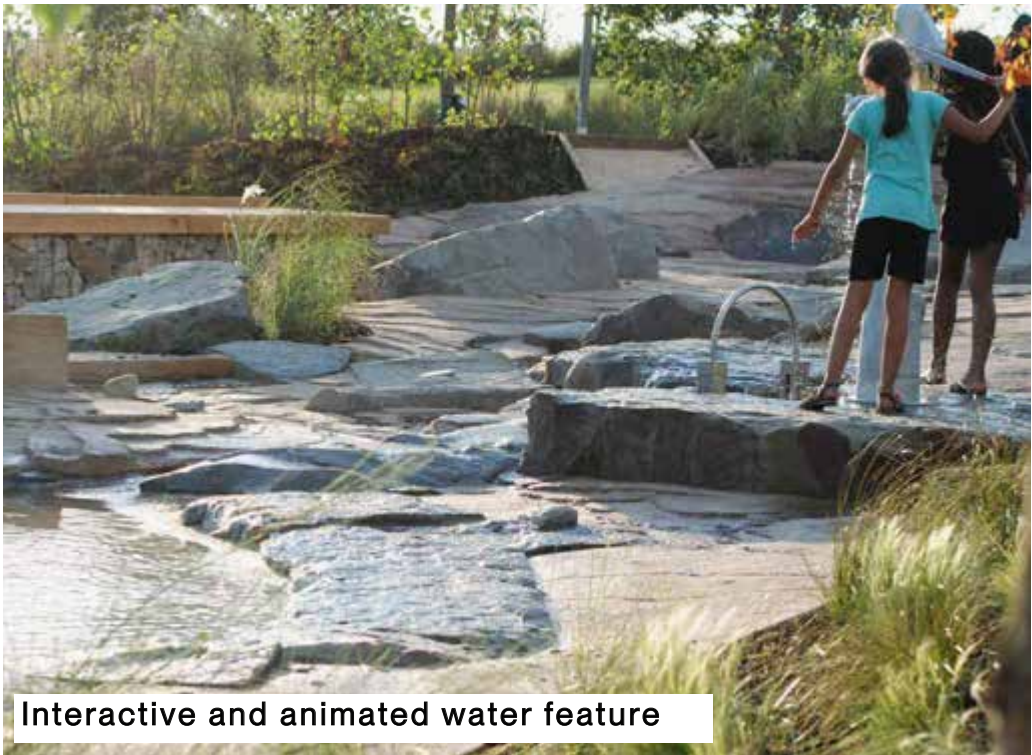




Draft Design | The Heart



New accessible washroom facilities



Interactive and animated water feature



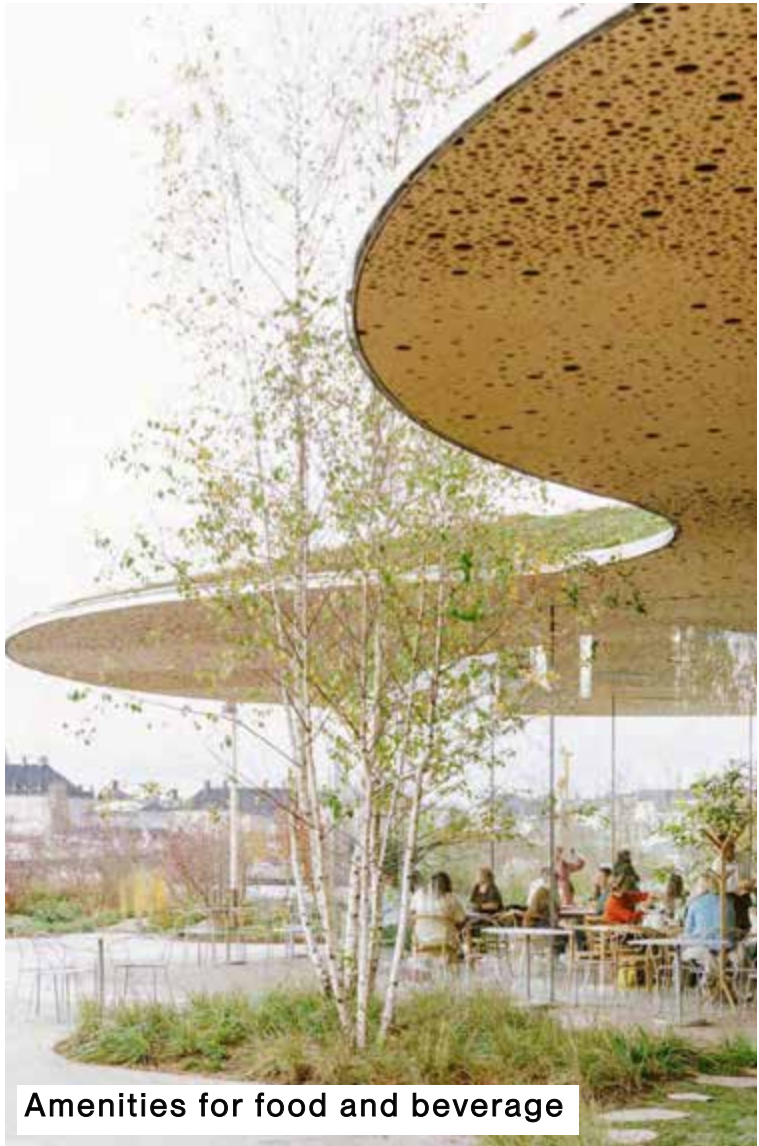
Infrastructure to support gathering and Indigenous ways of knowing and being



More opportunities for sitting and gathering



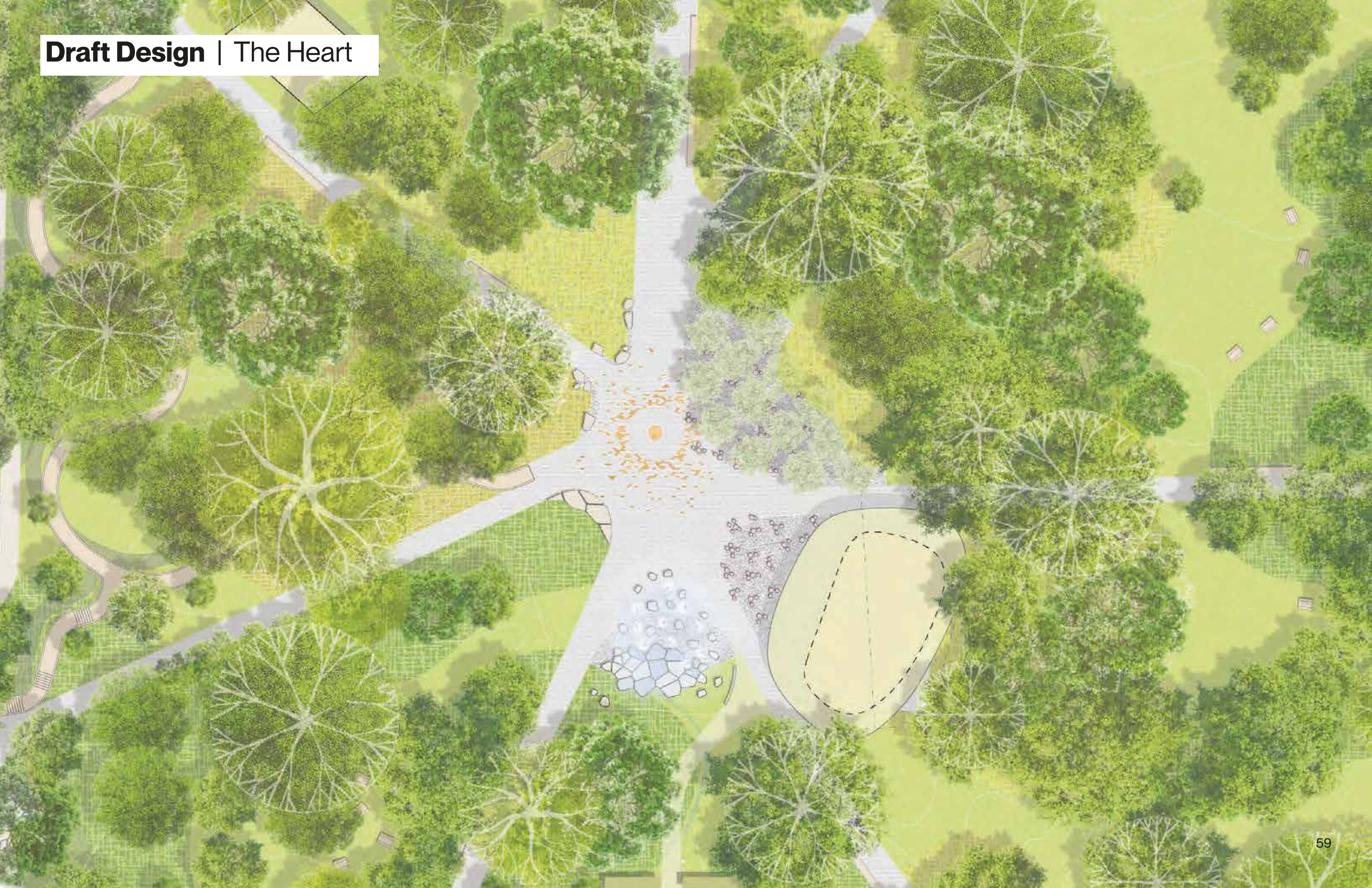
New tree planting



Amenities for food and beverage



Flexible infrastructure for small performances





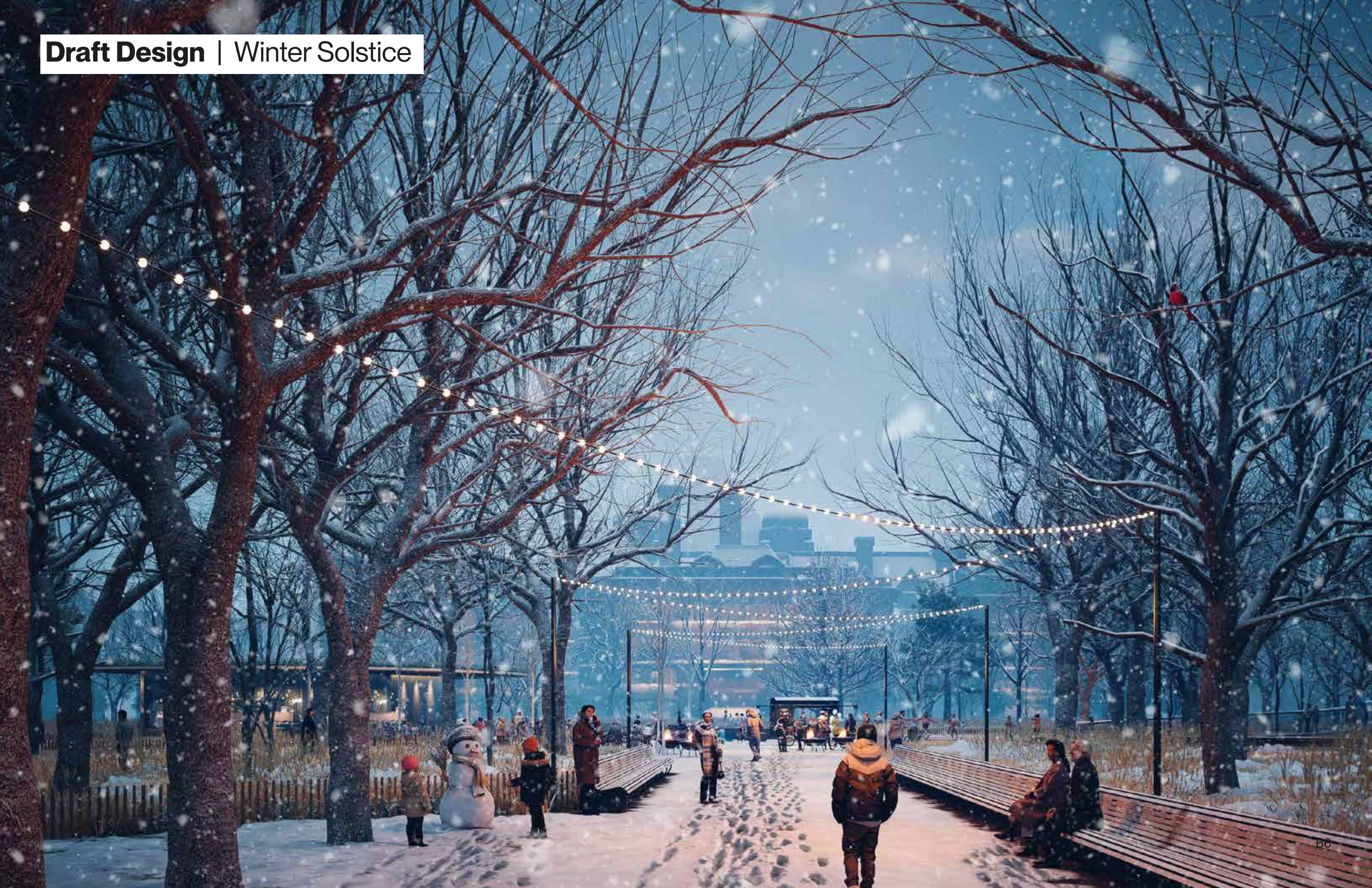




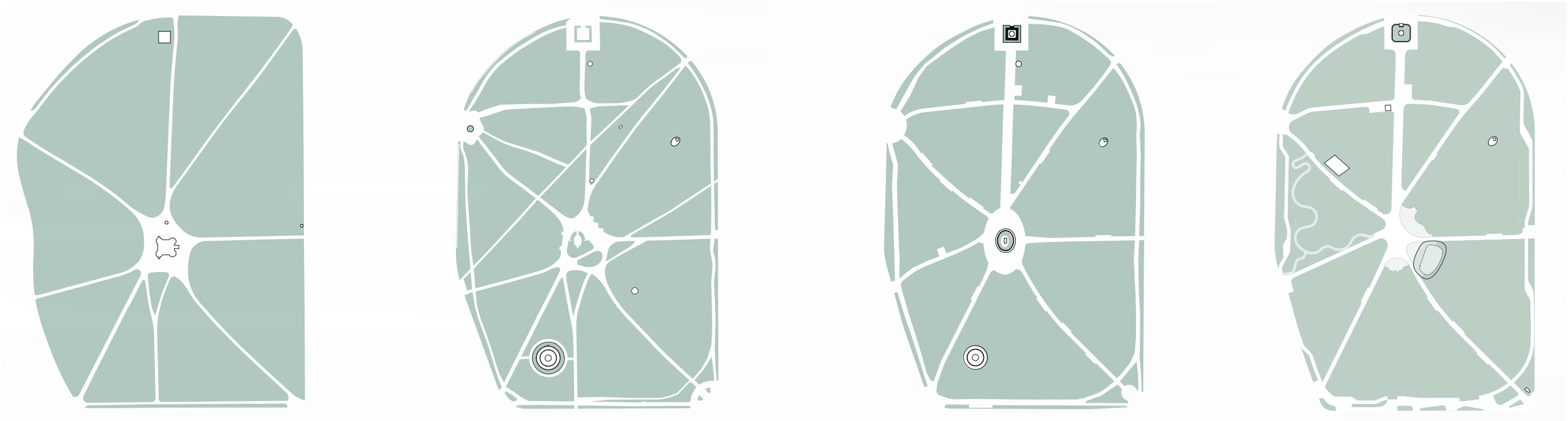








Draft Design | A Revitalized Queen’s Park North



c. 1934

c. 2010

2019

Proposed

In summary, the emerging draft design for Queen’s Park North seeks to sensitively introduce a series of interconnected design moves that collectively sustain historic patterns while evolving the site for current and future generations.

Joanna Delos Reyes

Senior Public Consultation Coordinator

Joanna.Delosreyes@toronto.ca

Shannon Lawrence

Senior Project Manager

Shannon.Lawrence@toronto.ca



So, how did we do? Scan the QR code and take a quick survey to share feedback on today's event:

<https://ca.mar.medallia.com/QPN2>

