



Pricefield Road Playground Park Improvements

Community Workshop
November 20, 2025

Land Acknowledgement

African Ancestral Acknowledgement

Agenda for Today's Meeting



Why We're Here!

The purpose of this meeting is to share what we heard from you in the last community meeting and survey, show how the design of improvements responds to that feedback, gather your views on these changes and ideas to inform the final design.

- 1. Welcome and Introductions**
- 2. Project Overview**
- 3. What We Heard: Engagement update**
- 4. What We Did: How that feedback is informing design options**
- 5. Q and A**
- 6. Next Steps**
- 7. Design elements workshop**

Councillor Remarks

5 Minutes

Meet the Project Team

City of Toronto Parks & Recreation

- **Christie Pearson**
Project Manager
Capital Projects Design & Delivery
- **Daniel Fusca**
Public Consultation Manager
Community Engagement
- **Lindsay Stephens**
Senior Public Consultation
Coordinator
Community Engagement
- **Jill MacLaughlan**
Supervisor Outreach & Spec Projects
Community Engagement
- **Annely Zonena**
Director Parks Planning and
Development
SPICE
- **Joanna Delos Reyes**
Senior Public Consultation
Coordinator
Community Engagement
- **Rosemary McManus**
Senior Public Consultation
Coordinator
Community Engagement
- **Stella Zhou**
Public Consultation Coordinator
Community Engagement
- **Katy Aminian**
Program Manager
Capital Projects Design & Delivery
- **AJ Visneski**
Senior Project Manager
Capital Projects Design & Delivery
- **Prapan Dave**
Director
Capital Projects Design & Delivery

Your Local Councillor

- **Councillor Dianne Saxe**
- **Anne Sorrenti**
Constituency Assistant, City Council

CCxA

- **Guillaume Paradis**
Senior Landscape Architect
- **Marianne Pascual**
Landscape Architect
- **Shaina Coulter**
Landscape Designer

Help us to create a respectful space!

To create a space that allows for dialog, productive feedback, and creativity, please:

- Approach conversations with **curiosity**
- Keep an **open mind**
- Treat others with **respect and kindness**
- **Critique ideas**, not people
- Abide by the City of Toronto's Human Rights and Anti-Harassment / Discrimination Policy and Hate Activity Policy.

As a project team, we hold ourselves to the same respectful engagement guidelines

If discriminatory, aggressive, or threatening language or behaviours are witnessed, and efforts are not made towards meaningful repair, those causing harm may be asked to leave.

If you have accessibility needs that are not being met, or if accommodations can be made please let a member of the project team know.



Recording notice

Project Introduction

5 Min

Park Features

- 0.76 hectares
- Paved pathways
- Bollard lighting
- Pole lighting
- Drinking water source
- Playground
- Shade structure
- Basketball court
- Horticultural beds
- Lawn
- Trees
- Benches
- Stone retaining walls



Site analysis

- Summer to Fall 2025
- City reviews (including Operations, Horticulture, Forestry, Planning)
- Independent Professional reviews (including Topographical, Arborist, Geotechnical, Environmental, Underground Utilities surveys)
- National, Provincial and City Regulation reviews (including By-laws, Authorities having jurisdiction, Ministries, Codes, Mandates, Strategic Plans, Safety, Accessibility, Playground, and Green Standards)



What we need to address

Parks Operations

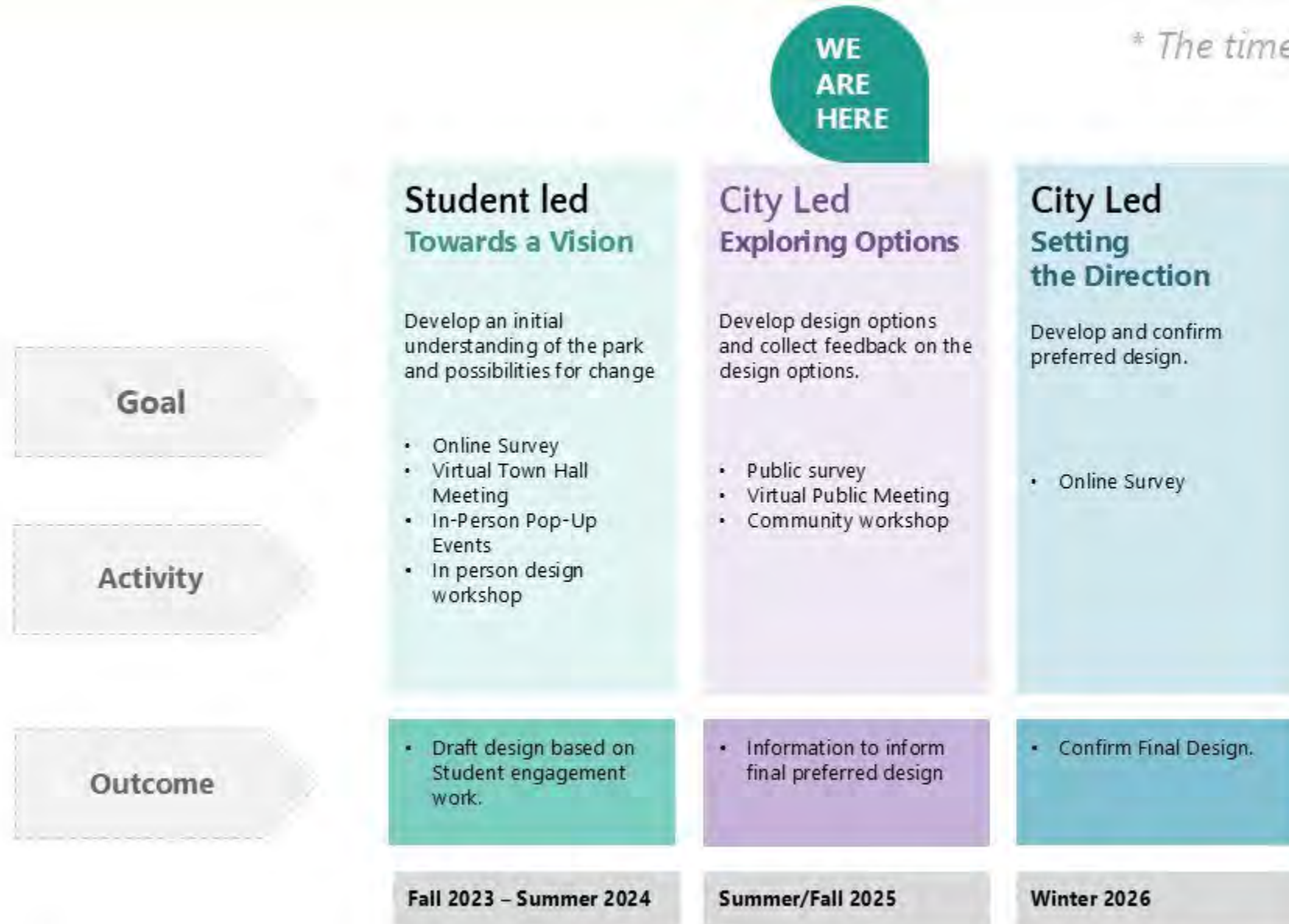
- Paved pathways width not accessible for maintenance
- Bollard lighting not illuminating despite new bulbs
- Pole lighting without maintenance access
- Electrical service 30amp insufficient
- Drinking water source not operable
- Playground and lawn seasonally muddy
- Horticultural beds partial irrigation function
- Damaged, dead and diseased trees including Ash



Engagement Process

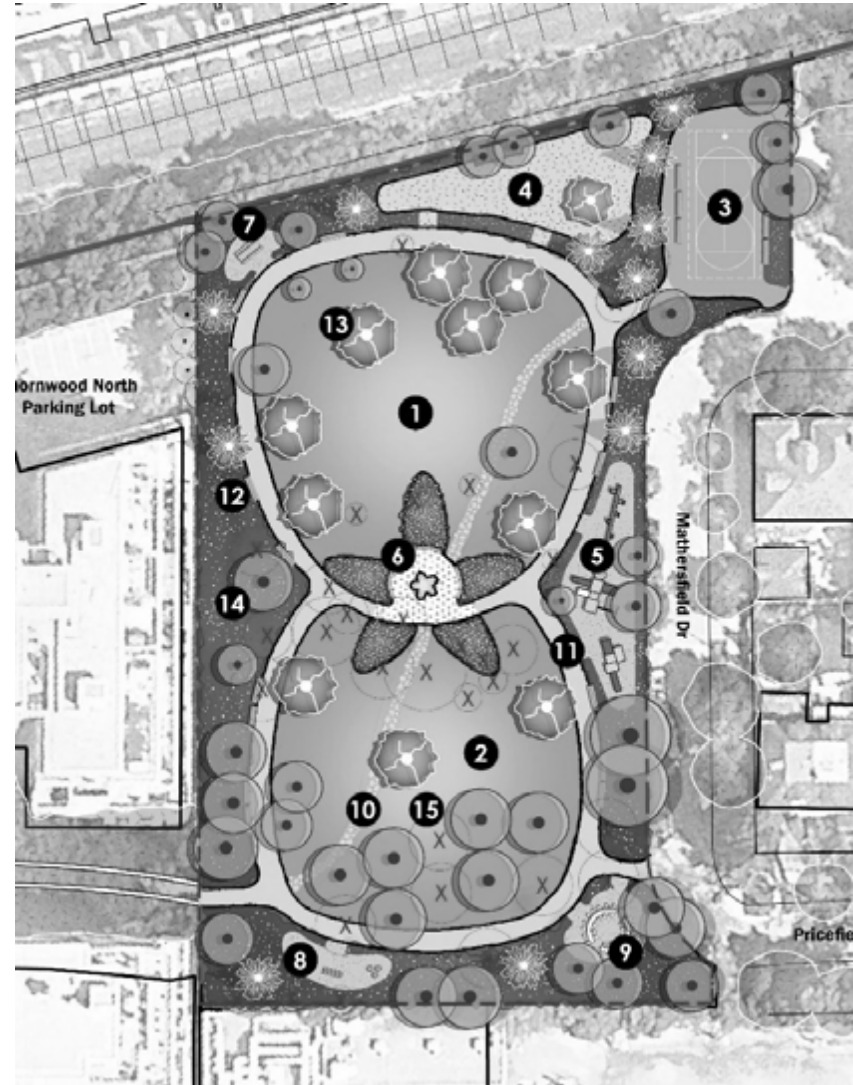
5 minutes

Community Engagement Plan - Revised



What We Heard about the design

- Preference for
 - Minor improvements
 - A unified feel
 - Not highly programmed
 - Neighbourhood scale
 - Prioritizing maintenance
 - Retaining existing open spaces
 - Maintaining or expand/improve the playground
 - Improving lighting
 - Planting native and pollinator plant species
 - Improving existing pathways and making them accessible
 - adding seating
- Concerns about
 - Privacy for adjacent homes
 - Removing mature trees
 - Removing the fence at Mathersfield
 - Safety
 - Drainage
 - Maintenance
 - Noise



Guiding Principles

- **Respect and enhance the existing park:** Improvements should respect the existing park rather than dramatically redesign or change the park.
- **Prioritize safety and comfort:** offer lighting and design options that increases the feeling of safety in the park.
- **Improve accessibility and circulation:** Design should improve internal accessibility and enhance existing informal pathways.
- **Maintain open green space** as adaptable flexible heart of the park.
- **Enhance play and multigenerational use:** Improve the playground and other gathering spaces.
- **Support ecology and natural features:** Any changes should support the ecological well being of the park, its trees and planting areas.
- **Maintain open and timely communication:** That communication should be timely, comprehensive and transparent throughout the improvements project.

Revised Draft Design

20 minutes

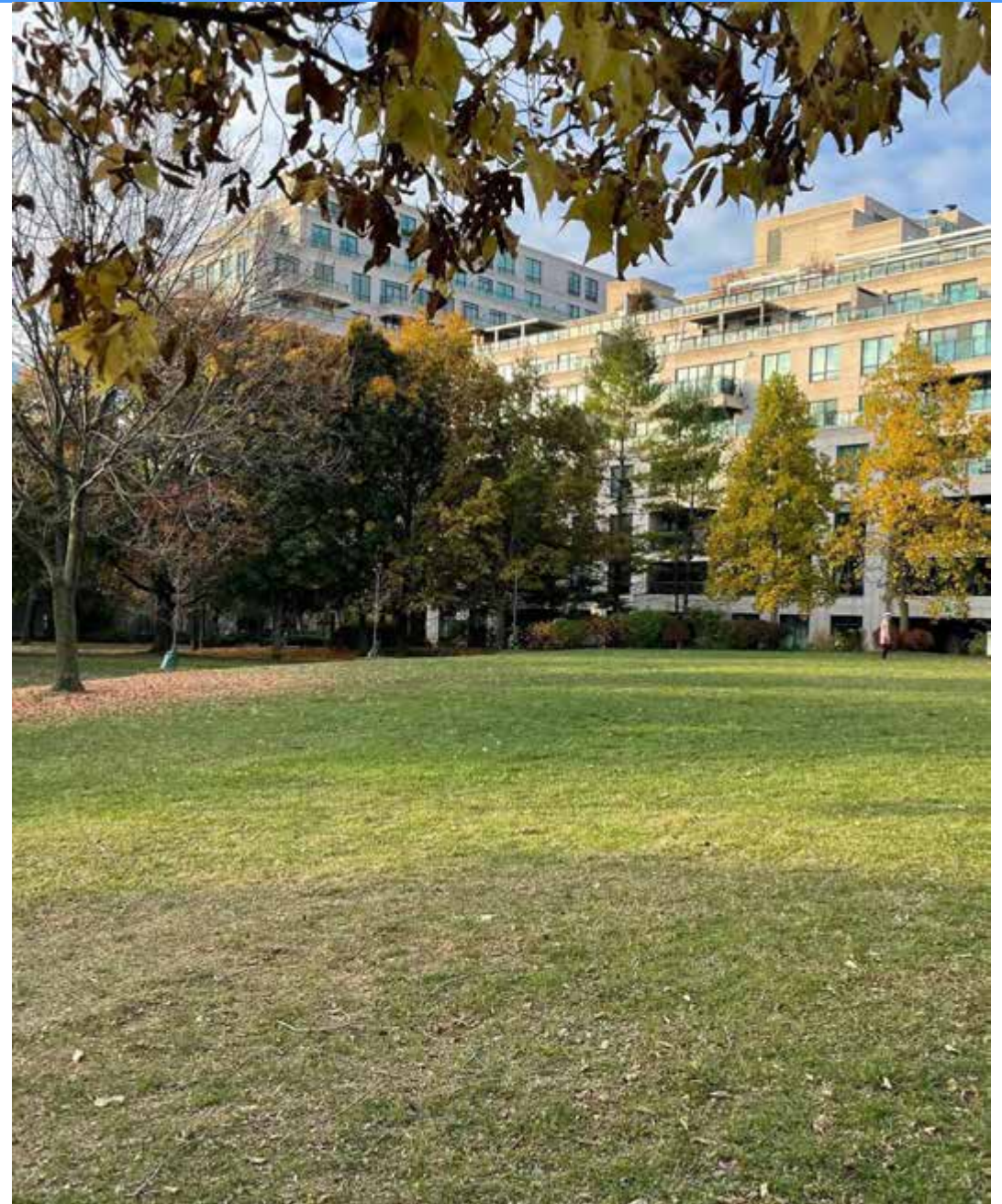
PRICEFIELD PARK REVITALIZATION

COMMUNITY WORKSHOP #2

NOVEMBER 20TH, 2025



Existing Conditions – Ambiance and Vibe



Existing Conditions – Tree Canopy Evolution



± 1985



± 2002

Existing Conditions – Site Layout and Uses (1)



Existing Conditions – Site Layout and Uses (2)



Park Improvements – June 2025, Community Priorities

1. NOT OVER PROGRAMMED

Smart selection of program / elements

2. MAINTAIN NEIGHBOURHOOD SCALE

Preserving & enhancing character/ peaceful & picturesque

3. IMPROVE ACCESSIBILITY THROUGHOUT

Less mud / more lawn, more paths, more benches

4. IMPROVE SENSE OF PLAY

Character options for playground

Water feature options

Narrative options

Sports court options

5. FACILITATE MAINTENANCE

Native species/Drought tolerant species

Grading, better drainage

6. PRIORITIZE SAFETY

Open sightline

Improved lighting

Park Improvements – Preliminary Guiding Principles



Respect & Enhance existing park

Improvements should respect the existing park rather than dramatically redesign or change the park.



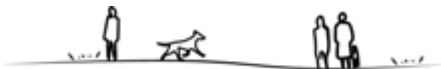
Improve accessibility & circulation

Design should improve internal accessibility & enhance existing informal pathways.



Enhance play & multigenerational use

Improve the playground & other gathering spaces.



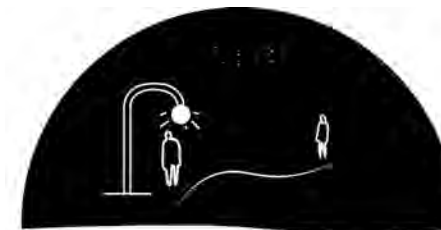
Maintain open green space

As adaptable flexible heart of the park.



Support ecology & natural features

Any changes should support the ecological well being of the park, its trees & planting areas.



Prioritize safety & comfort

Offer lighting & design options that increases the feeling of safety in the park.

Park Improvements – Inspiration From Picturesque Parks



- **Vast stretches of lawn**, gently undulating, create a sense of freedom and openness.
- Lakes, winding rivers, or ponds are incorporated to **reflect light** and create perspectives.
- **Groups of trees and shrubs** are arranged to create varied scenes and **natural “pictures.”** (fore., mid. and background)
- **Paths are curved** to guide the eye and surprise the visitor.
- They are generally **bordered by groves of trees** and shrubs, arranged asymmetrically.



ELEMENTS OF DESIGN

1. TREES & OPEN SPACE
2. PATHSWAYS AND CIRCULATION
3. PLANTING & SOFTSCAPE
4. CENTRAL HUB
5. PLAYGROUND
6. MULTI-USE COURT
7. SAFETY & LIGHTING

Trees and Open Spaces – Guiding principles



- Creating more open green space
- Support ecology & natural features
- Respect & enhance existing park
- Prioritize safety

66% of respondents supported the amount of open lawn presented in the initial design

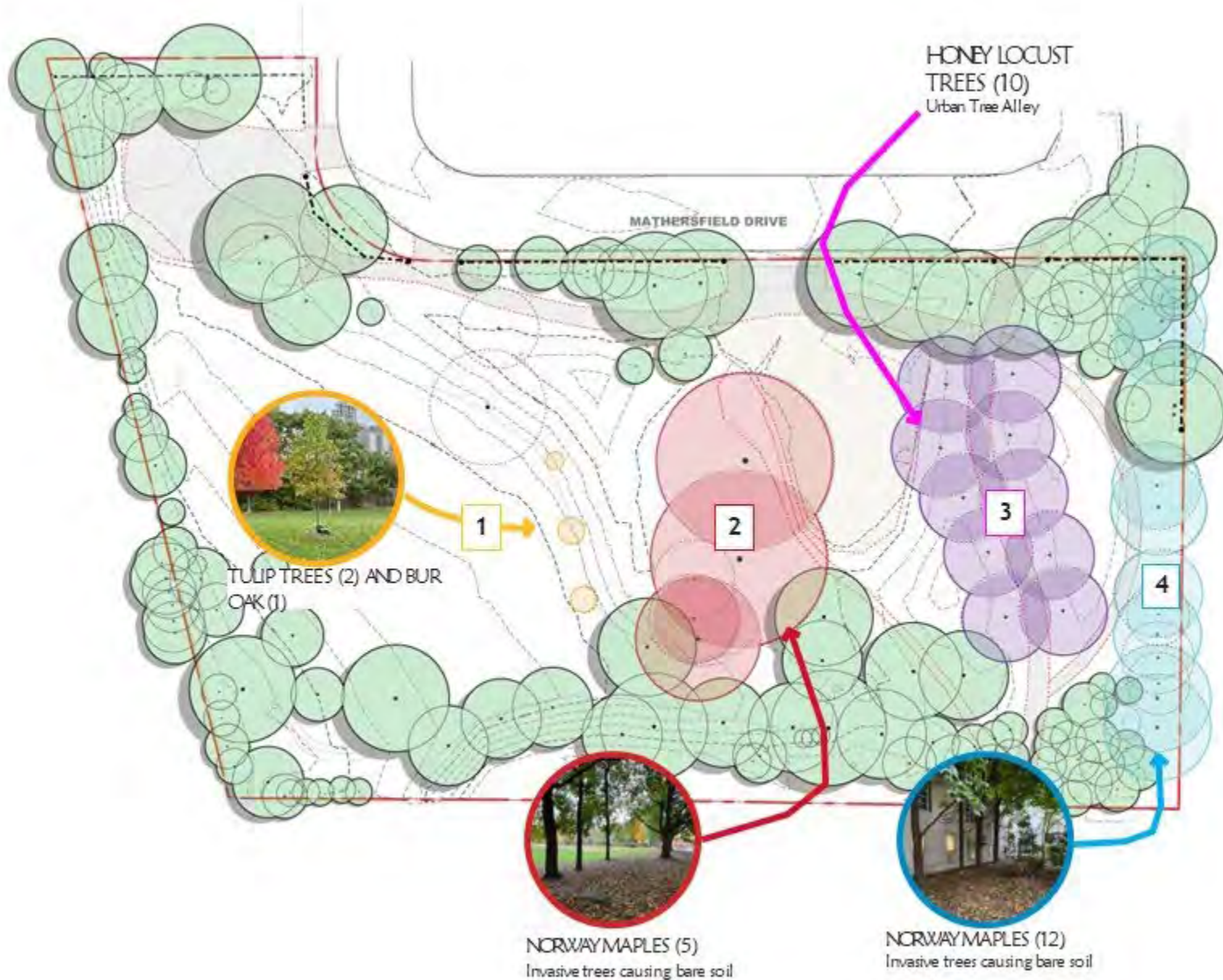
In favor of maintaining the park's open grassy areas

Concerns about muddy conditions, pooling water

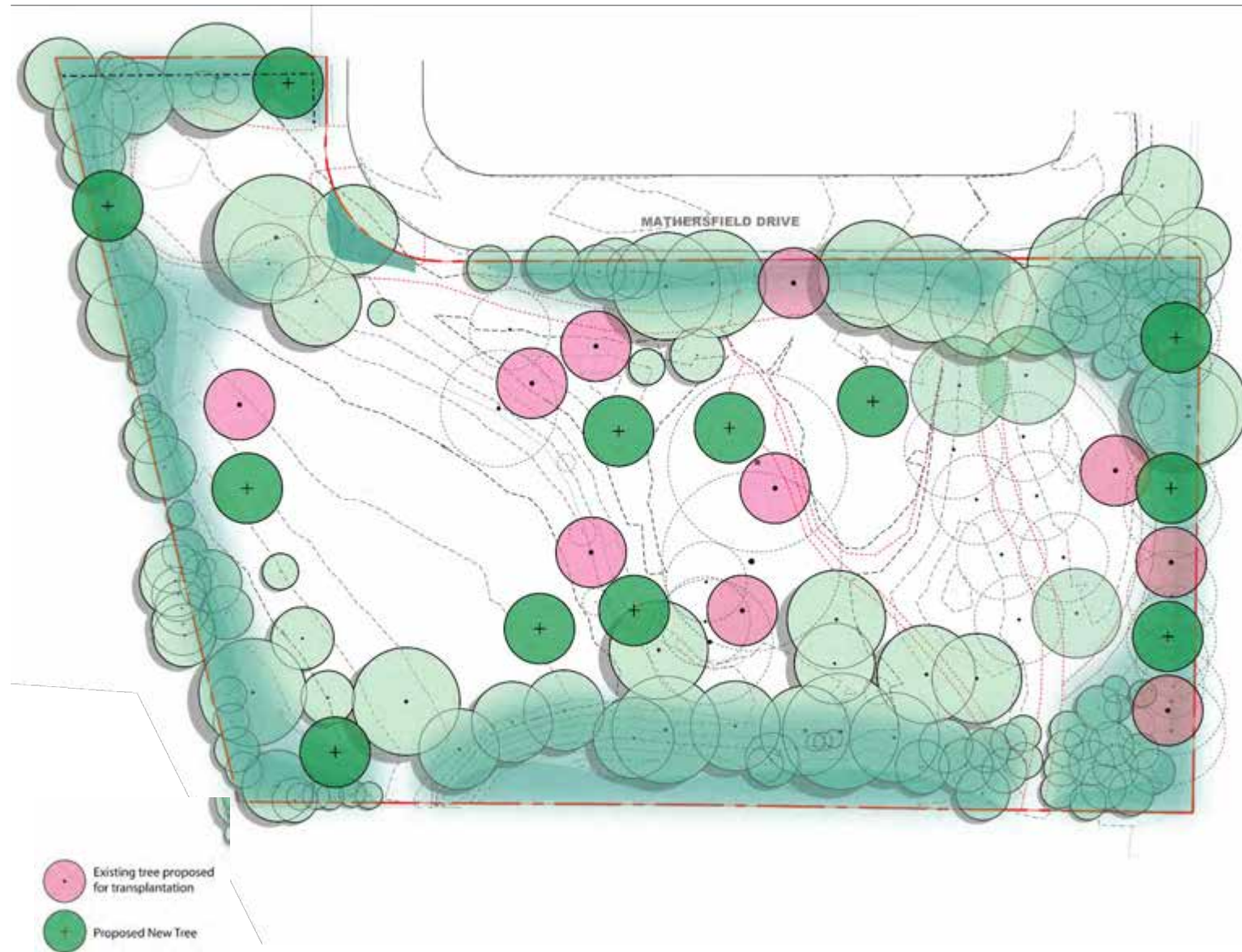
Strong opposition to removing mature trees

Want a unified feel for the park

Trees and Open Spaces – Trees Condition Assessment



Trees and Open Spaces – Design Strategy



Creating more open space by transplanting and relocating specific trees

Improving park sightlines and safety by rearranging canopies

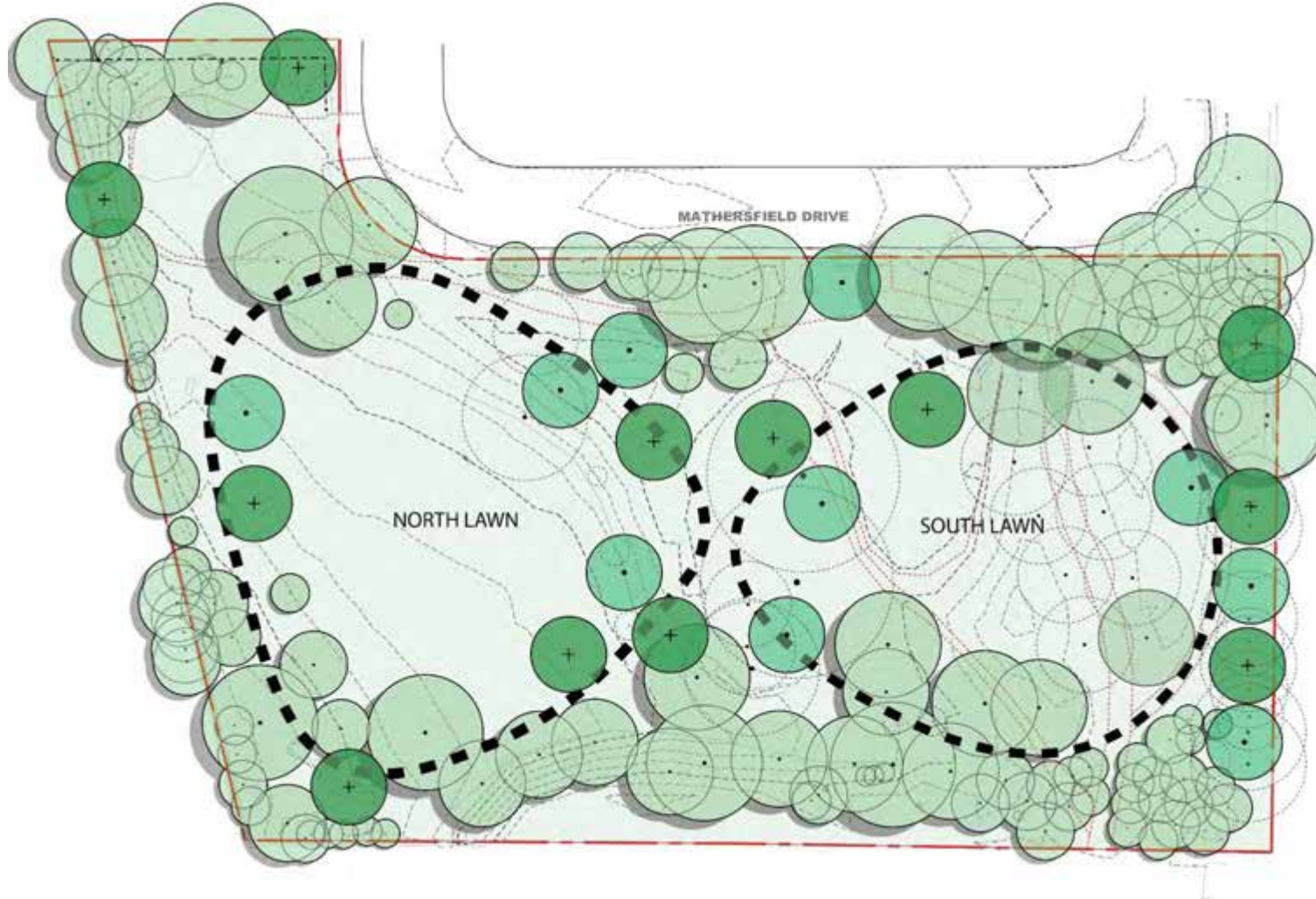
Replace removed trees with native species

10 existing trees proposed for transplantation (7 Honey Locust, 2 Tulip Trees, 1 Bur Oak)

12 Proposed New Trees

17 Norway Maples proposed to be removed subject to community feedback

Trees and Open Spaces – Results & Impacts



Healthier & Native ecosystem

More opportunities for natives species

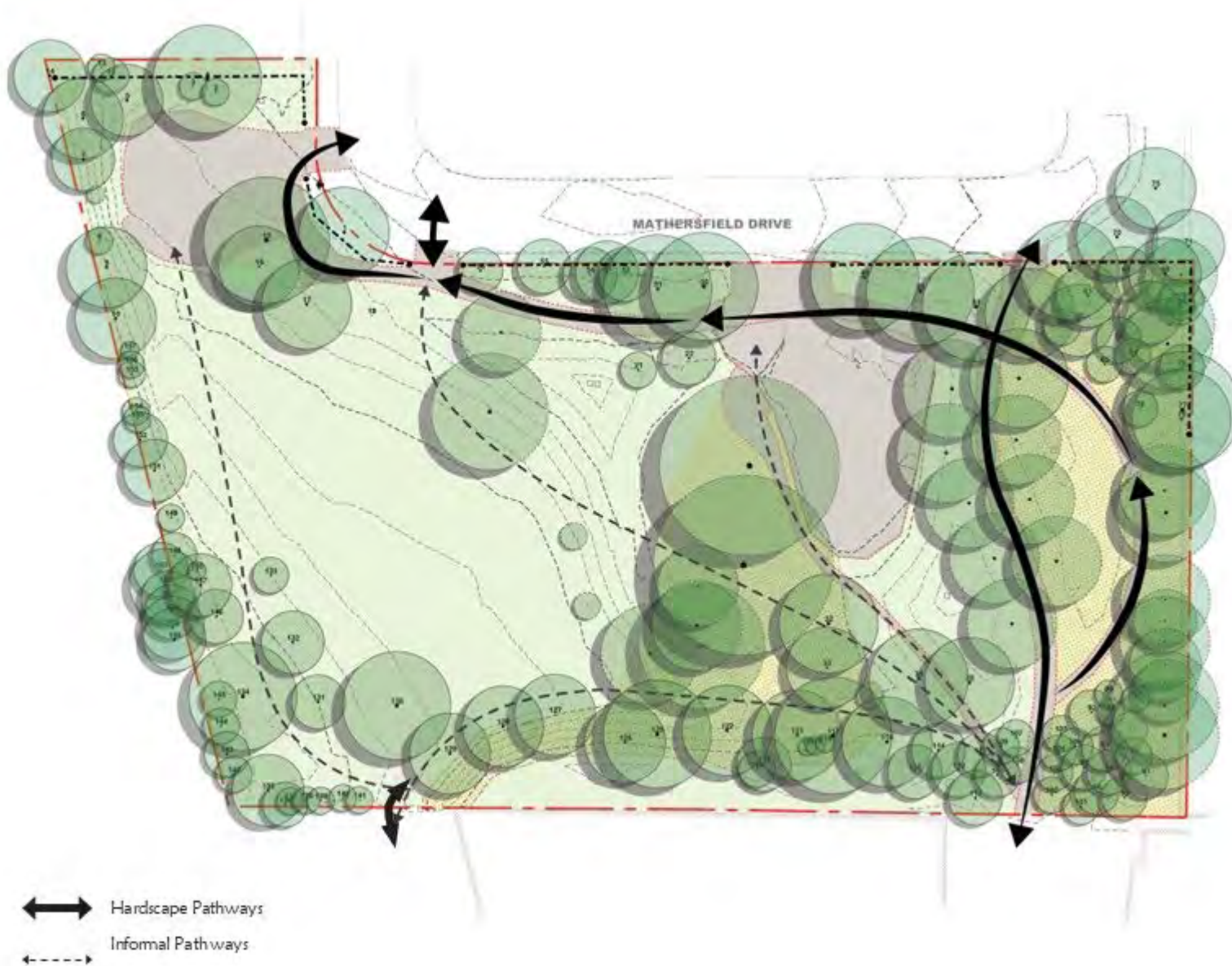
Expend open space with clear view

More open green space & lawn

Less mud areas

Enhance the picturesque character of the park

Pathways & Circulation– Guiding principles

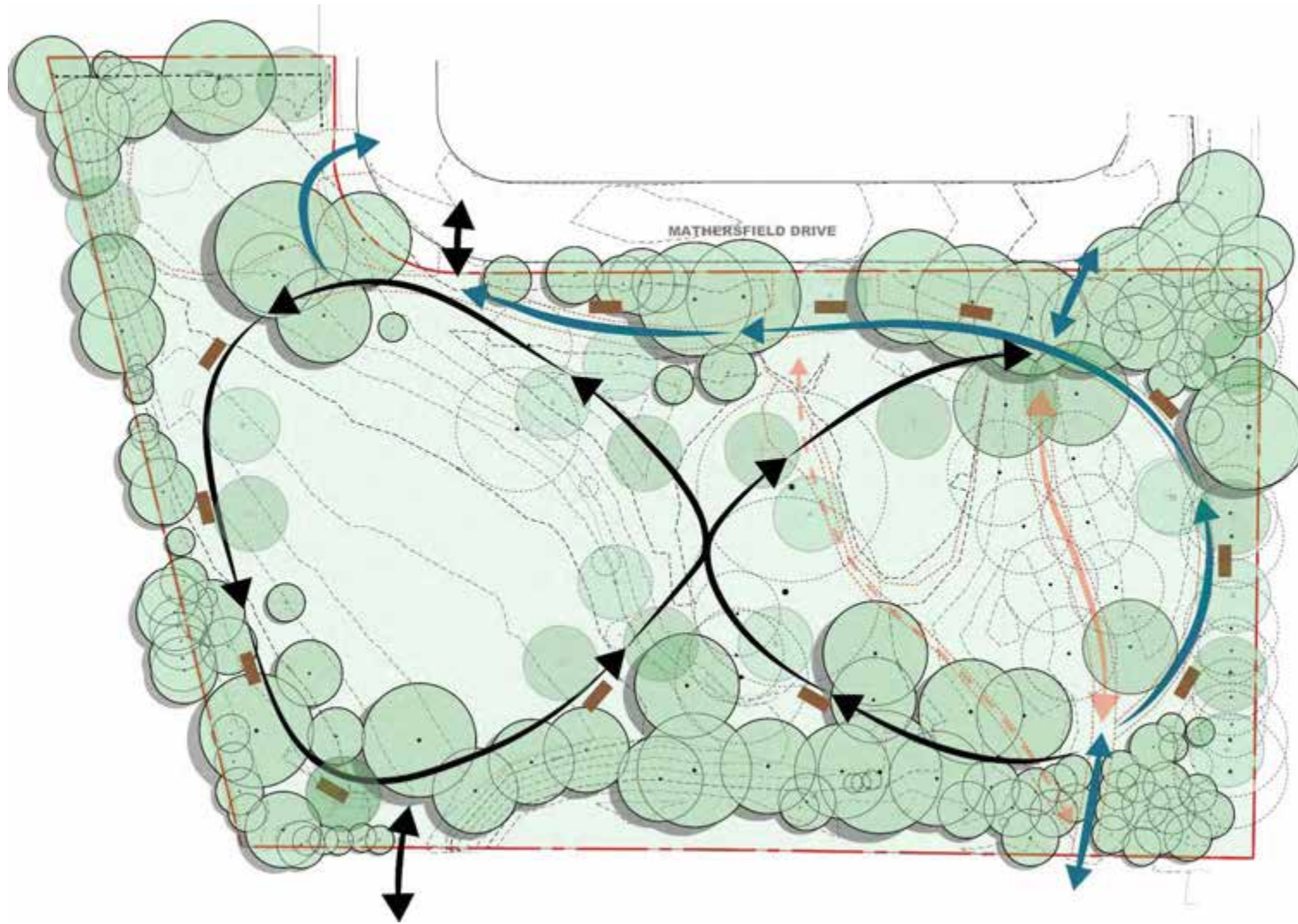


- Improve accessibility & circulation
- Facilitate maintenance
- Prioritize safety & comfort

58% supported the inclusion of an informal pathway

39% supported the inclusion of a figure 8 pathway
VS 35% opposed it

Pathways & Circulation – Design Strategy



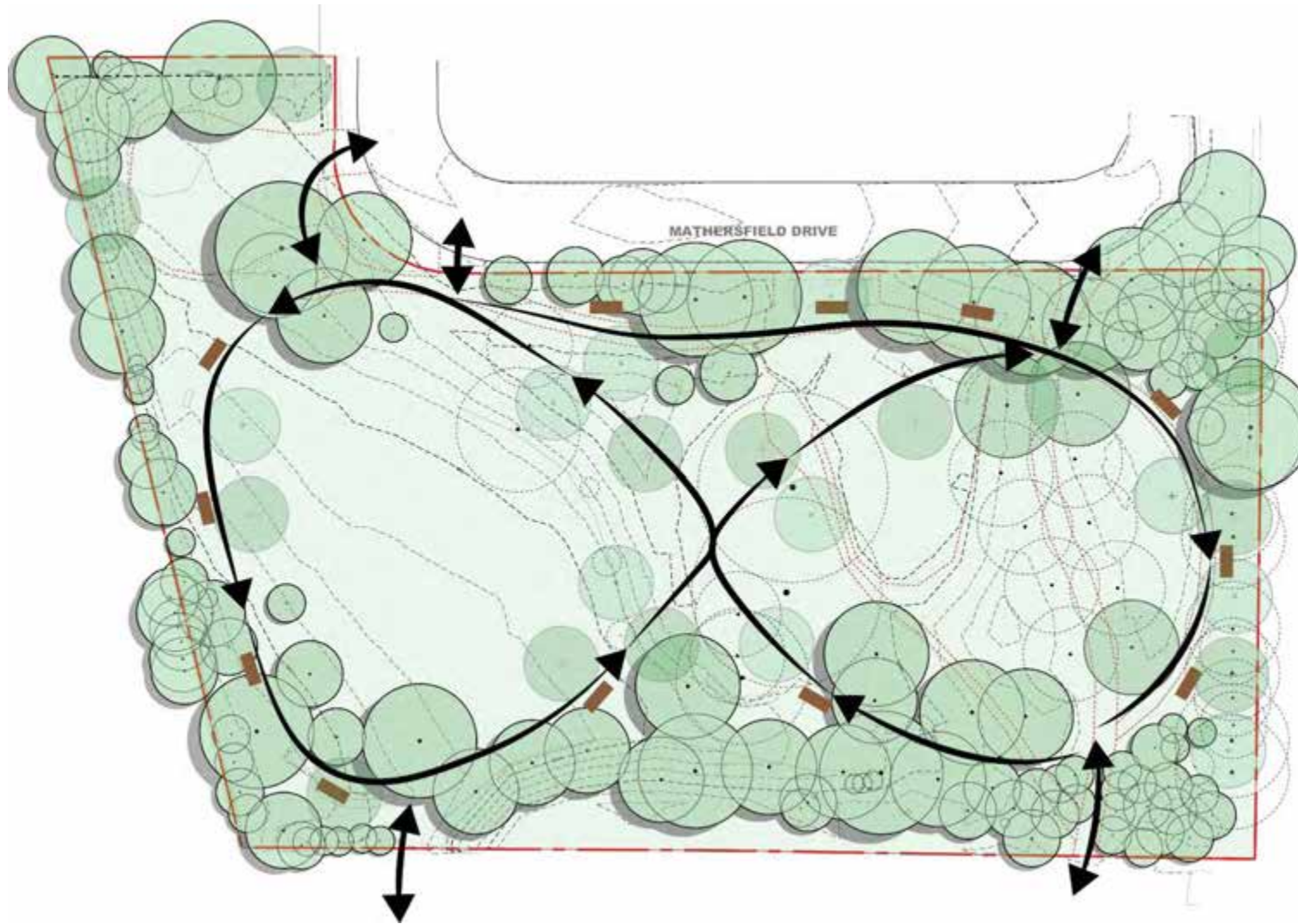
Redefine the Figure 8 path to integrate the existing pathways and adapt it to the site's topography

Optimize accessibility and maintenance operations

Offer opportunities for seating, interaction, and contemplation

Reposition the centre

Pathways & Circulation – Results & Impacts



Better accessibility throughout the park

Create a sense of promenade within the park

Lengthen the accessible pathways

Provide clear sightlines

Year-round access for continuous maintenance

More benches

Break cyclists speed

Pathways & Circulation – Examples of Pedestrian Circulation in Parks



Existing Path



Cristina-Enea Park, Spain

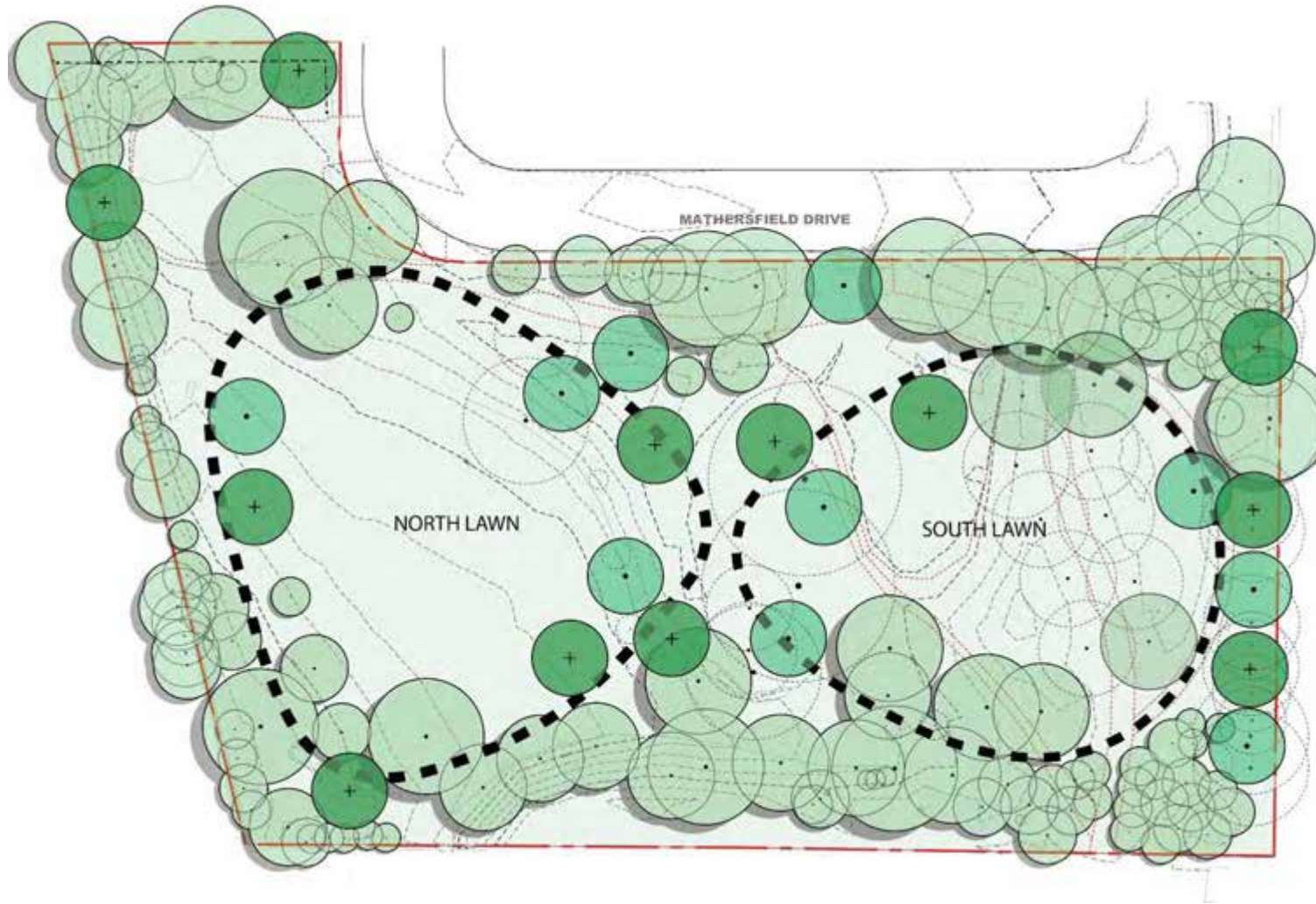


Cristina-Enea Park, Spain

Pathways & Circulation – Examples of Site Furnishings



Planting and Softscape – Guiding principles



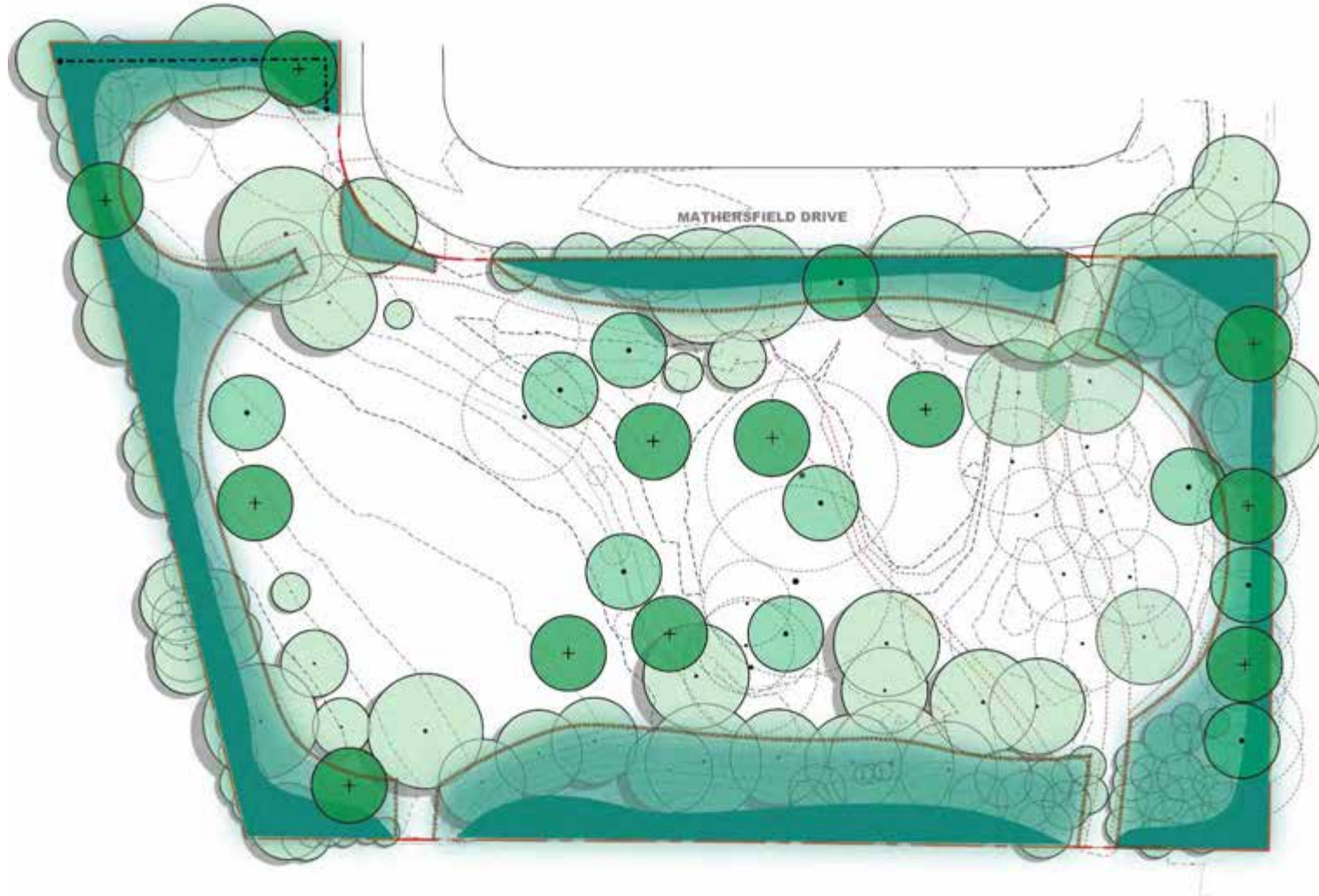
- Support ecology & natural features
- Preserving & enhancing picturesque character

In favor of native and pollinator plant species

64% supported the amount of proposed planting areas
Support for native and pollinator plant species

27% supported removing the fence along the eastern edge of the park and Mathersfield Drive to improve access VS 54% opposed it

Planting and Softscape – Design Strategy



Create planted buffer along park perimeter to protect and enhance the park

Replace the curbside fence with a plant protection fence

Consolidate a planting character that resonates with the immediate context

Planting and Softscape – A Neighborhood Named Rosedale



JARVIS ESTATE, ROSEDALE, CIRCA 1835

Planting and Softscape – A Collection of Native Wild Roses



PAVEMENT ROSE



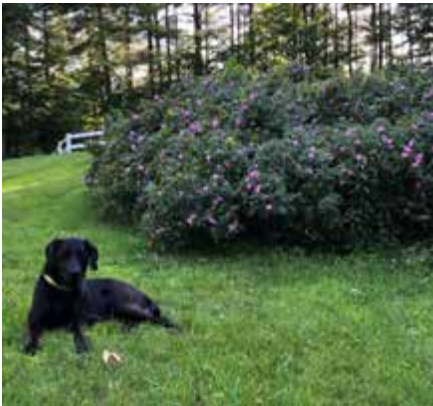
SHINING ROSE



PRAIRIE ROSE



VIRGINIANA ROSE



SMOOTH WILD ROSE



MEADOW ROSE



SWAMP ROSE



WOOD'S ROSE

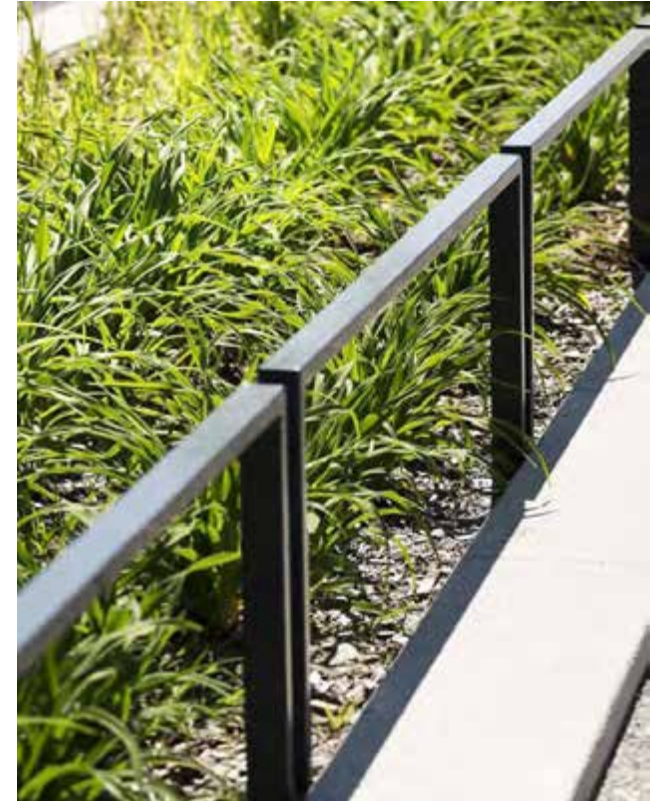
Planting and Softscape – Example of Planted Buffer



Planting and Softscape – Examples of Temporary Wooden Fence

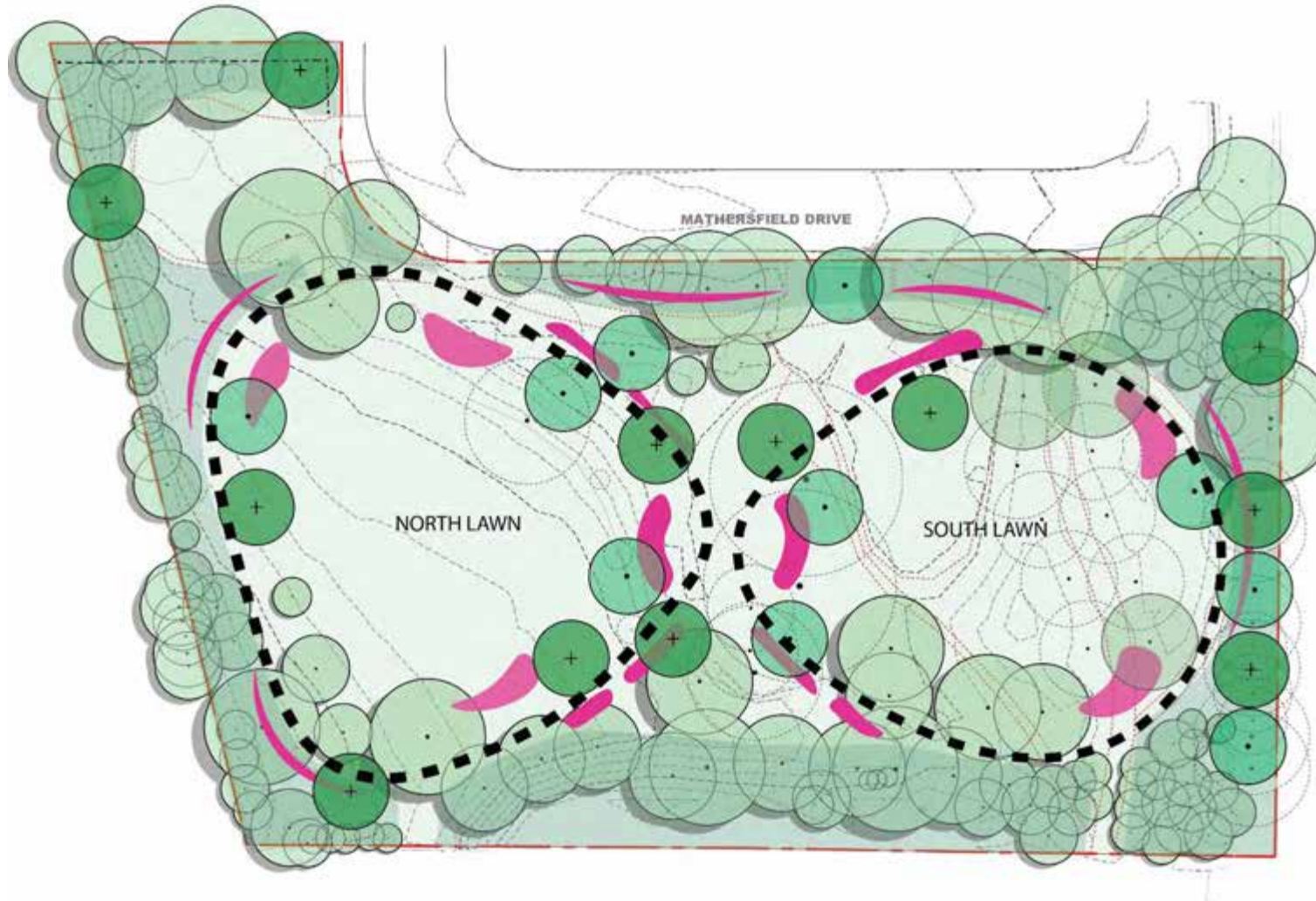


Planting and Softscape – Examples of Formal, Chic low fence



Bennett Park, Chicago, By MVVA

Planting and Softscape – Results & Impacts



Allow native species opportunities to grow

Less mud

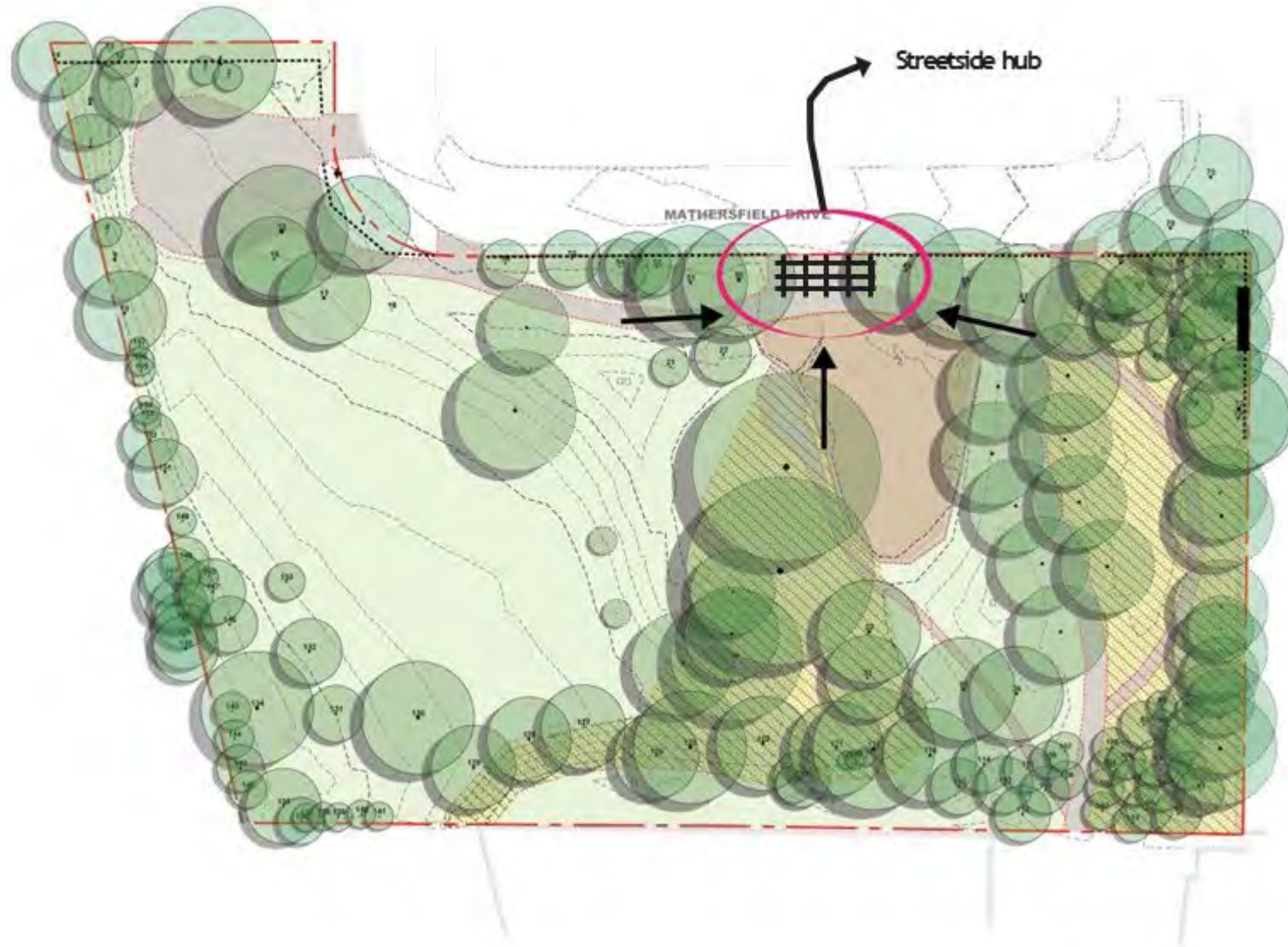
Create habitats for birds & animals

Natural boundary enables safe play within park

Enhance intimate park atmosphere

Low-maintenance adapted species

Central Hub – Guiding Principles

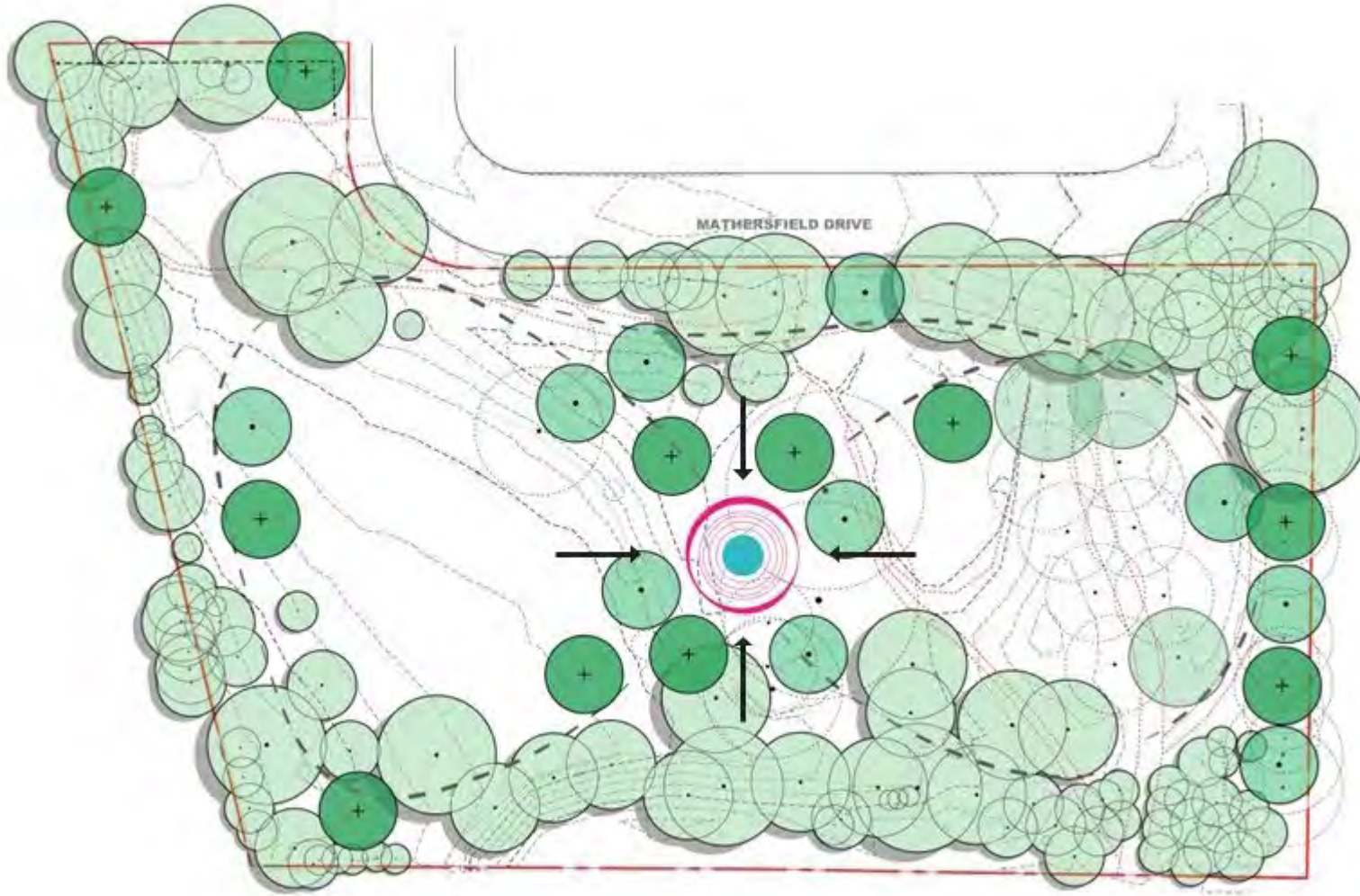


- Improve sense of play and gathering space

53% supported the amount of seating and gathering areas

39% supported the inclusion of a water feature VS 42% cent opposed it

Central Hub – Design Strategy



Unify the two parts of the park

Relocate the park hub to the center,
with attention to its expression

Central Hub – Examples of Central Planter



Jardin du Luxembourg, Paris

Central Hub – Examples of Central Seating

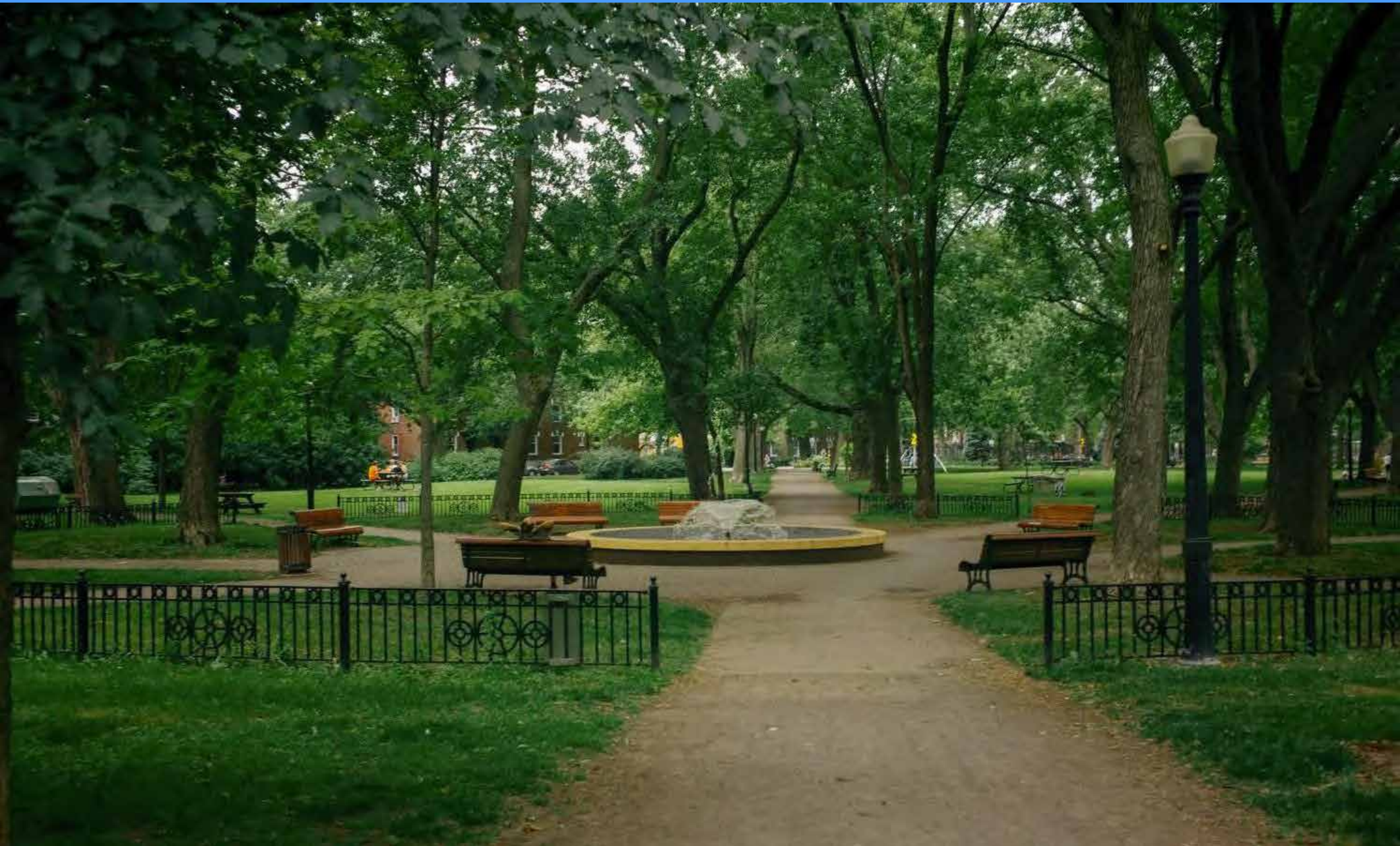


Washington square, NYC



Järfältet, Stockholm

Central Hub – Example of Water Feature



Central Hub – Water Feature Benefits

Activation of public space through playful and peaceful experiences Cooling oasis for people

Enhancing urban trees resilience

to heat waves Support urban

wildlife by providing water

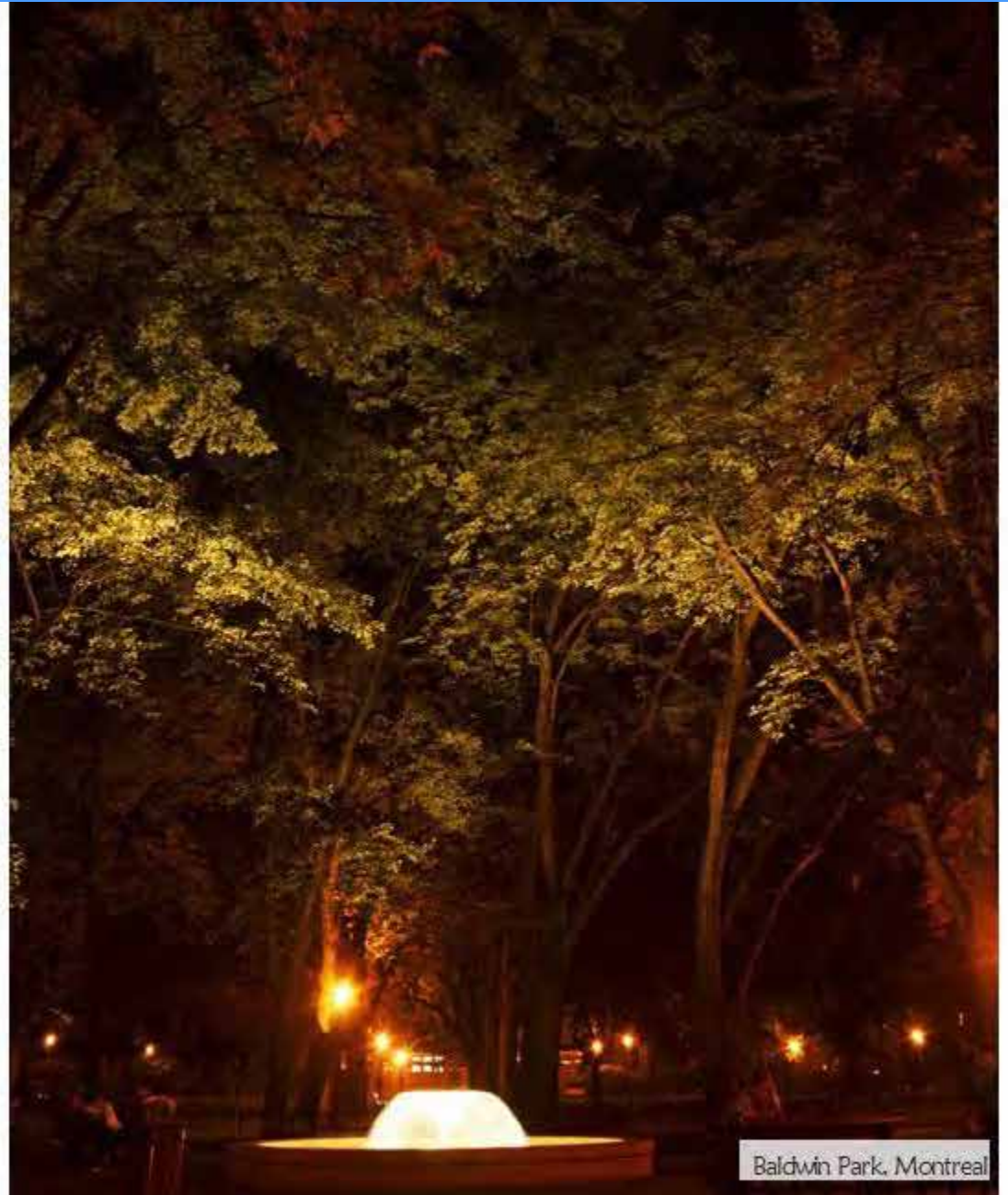
Enhancement of well-being

Community connector

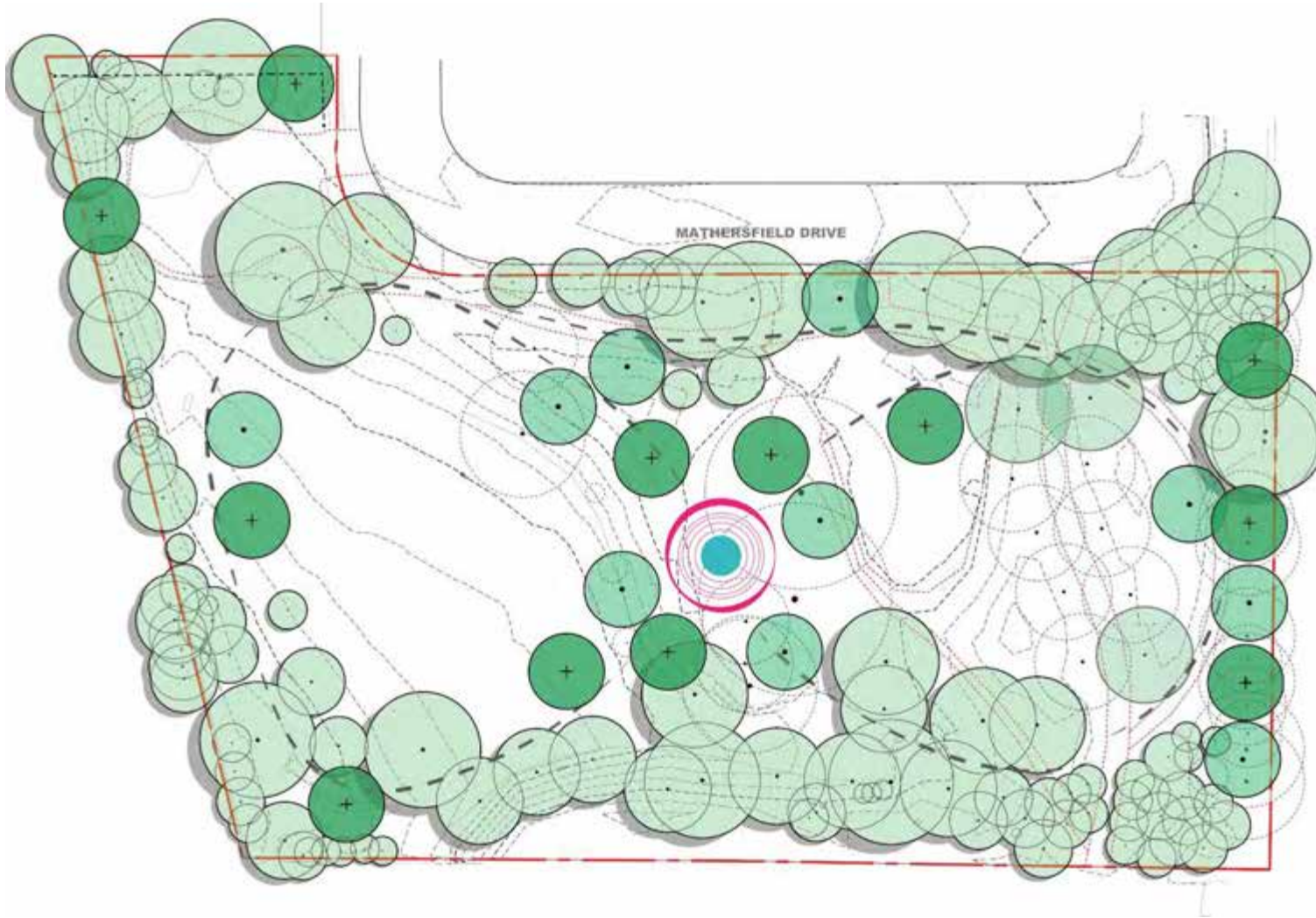
Welcoming space for teenage

girls

Central Hub – Examples of Water features



Central Hub – Results & Impacts



A gathering space offering 360° view of the park

Park becomes a reflection of Rosedale origins with a meaningful heart

An enhanced picturesque and peaceful ambiance

Playground – Guiding Principles



- Improve sense of play

The playground is a highly valued feature

Strong support for maintaining or slightly expanding the current playground

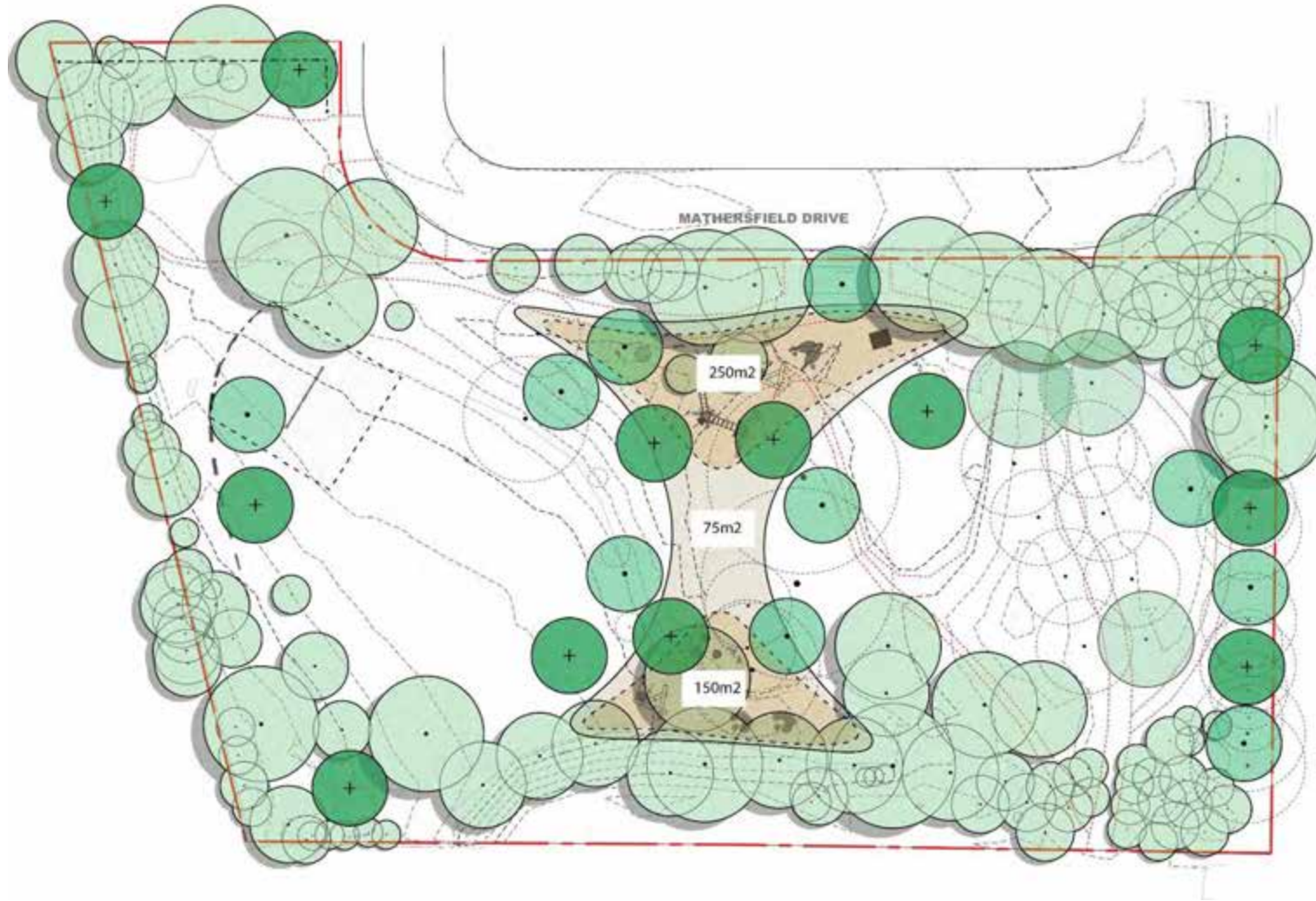
More inclusive playground experience, including a more accessible play surface

Many opposed relocating the playground near roads and supported keeping the swings and sandbox

61% supported the inclusion of an improved playground (i.e. new play equipment)

38% supported the approximate size and location of the improved playground VS 35% opposed it

Playground – Design Strategy



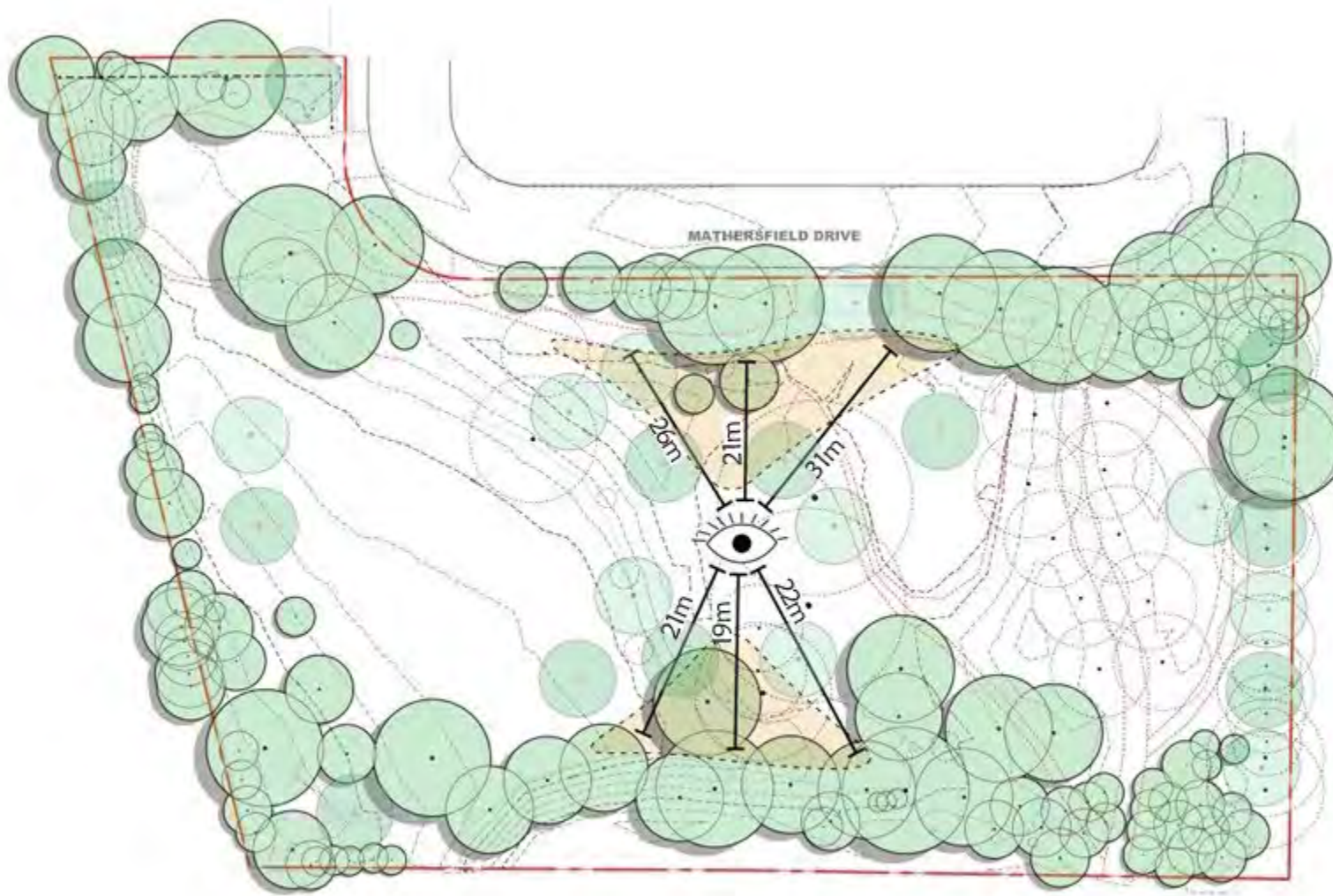
Relocate playground while maintaining current play offerings

Reposition or/and upgrade the modules

Maintain path and planting buffer to provide separation between the playgrounds and the street

Integrate existing trees into the playgrounds

Playground – Results & Impacts



Create more dynamic and engaging play opportunities linked to the hub

Upgraded playground area to complement the open lawn's free play

Open sightline between the two play areas connected to the park's central hub

Incorporate the water feature in the play opportunities

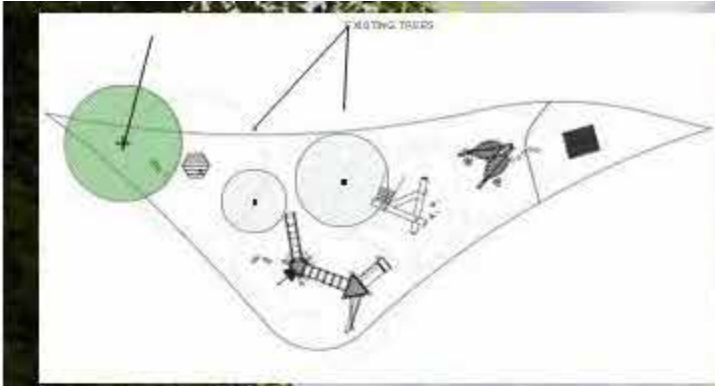
Playground Module Options – Reuse of Existing Modules



- Swing
- Open Spiral Slide
- Seesaw swing
- Sandbox
- Talk Tube
- Crawling Tube
- Circular Monkey Bar



Playground Module Options – Upgraded Modules, East Playground



1. Alpine Hut



2. Log Piles



3. Leaf Climber



4. Log Tangle



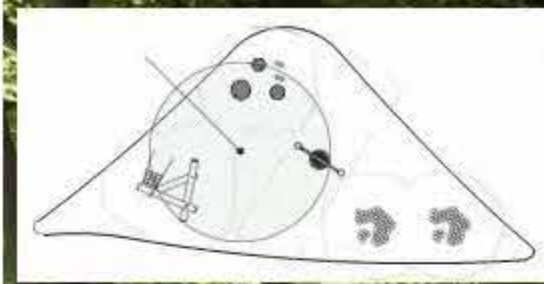
5. Log Stepper



6. Spinner



Playground Module Options – Upgraded Modules, West Playground



Playground Character – Natural Playground References



Examples of Swing Integration



ODAYMIN PARK, EDMONTON

Multi-Use Court – Guiding Principles



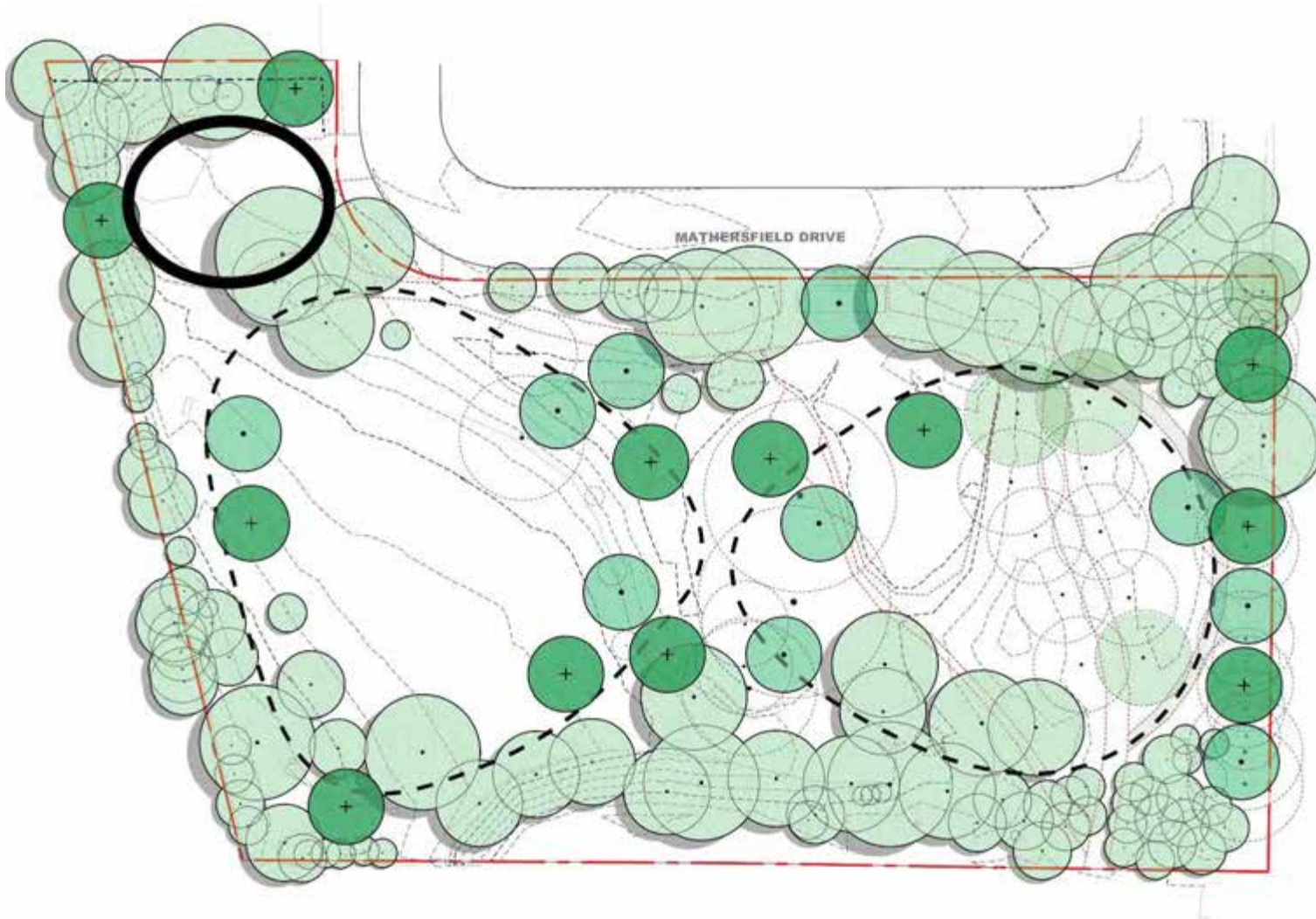
- Respect & enhance existing park
- Improve sense of play

45% supported the inclusion of an improved flexible active space (i.e. multi-sport court) and 39% opposed it.

51% against inclusion of a fitness station
To feature like a pickball or multi-sport court
due to noise



Multi-Use Court – Design Strategy

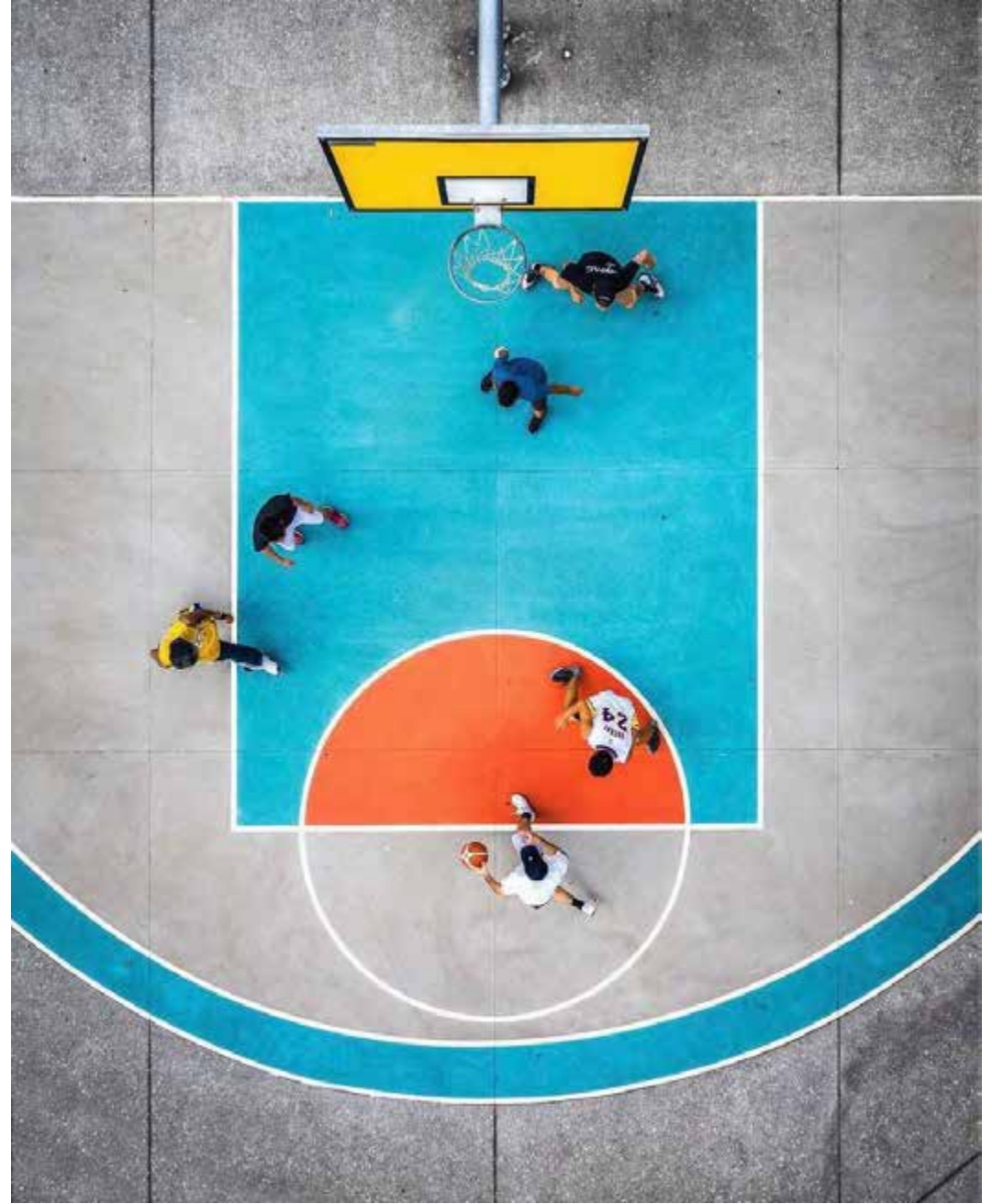


Maintain the existing footprint of sports court

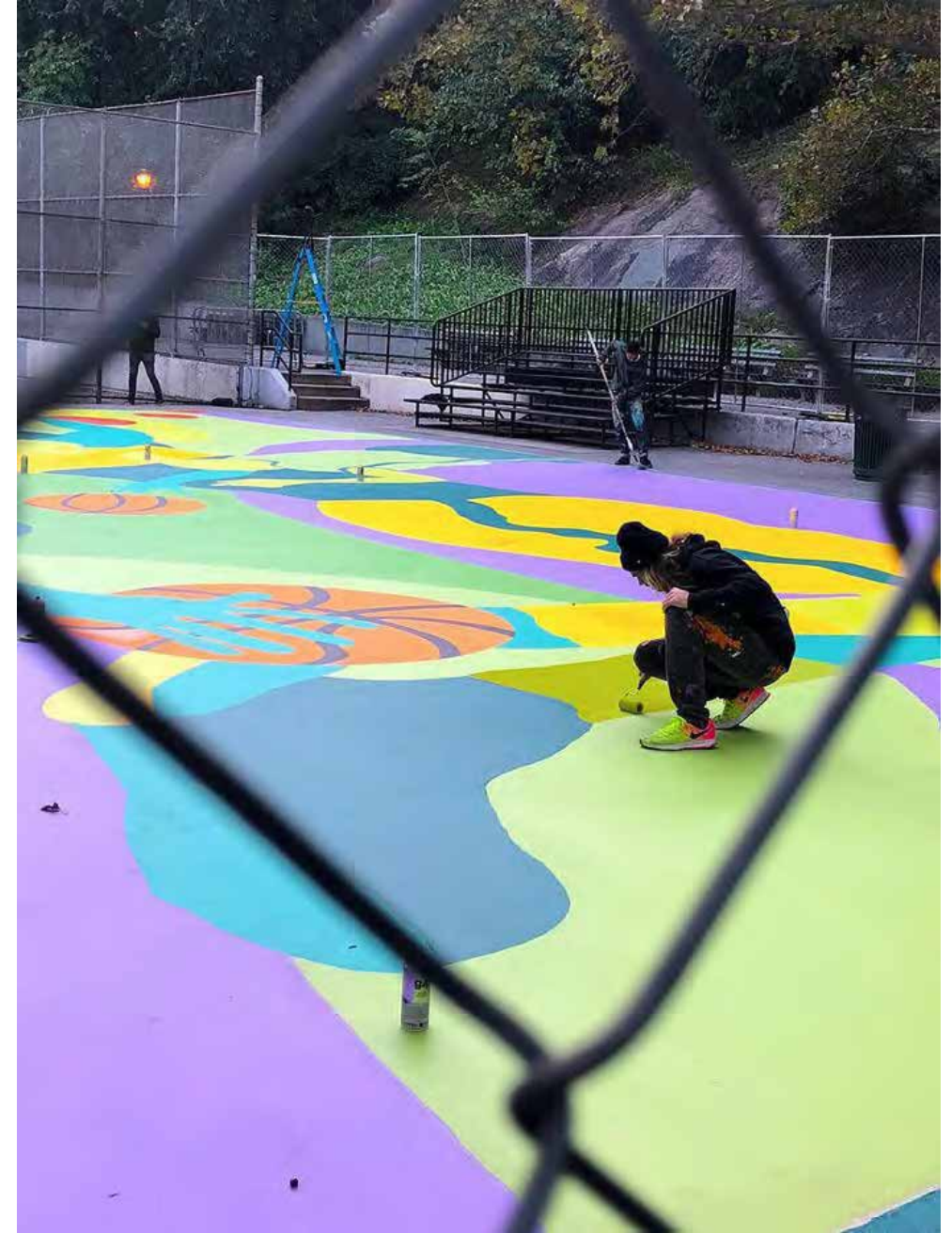
Provide a layout and design that accommodates various activities - bicycle - running - hopscotch - imaginative play

Add ground markings to make the space more dynamic and playful.

Multi-Use Court – Examples of Functional Marking for Active Sport Area



Multi-Use Court – Examples of Artistic Marking for Active Sport Area



Multi-Use Court – Results & Impacts

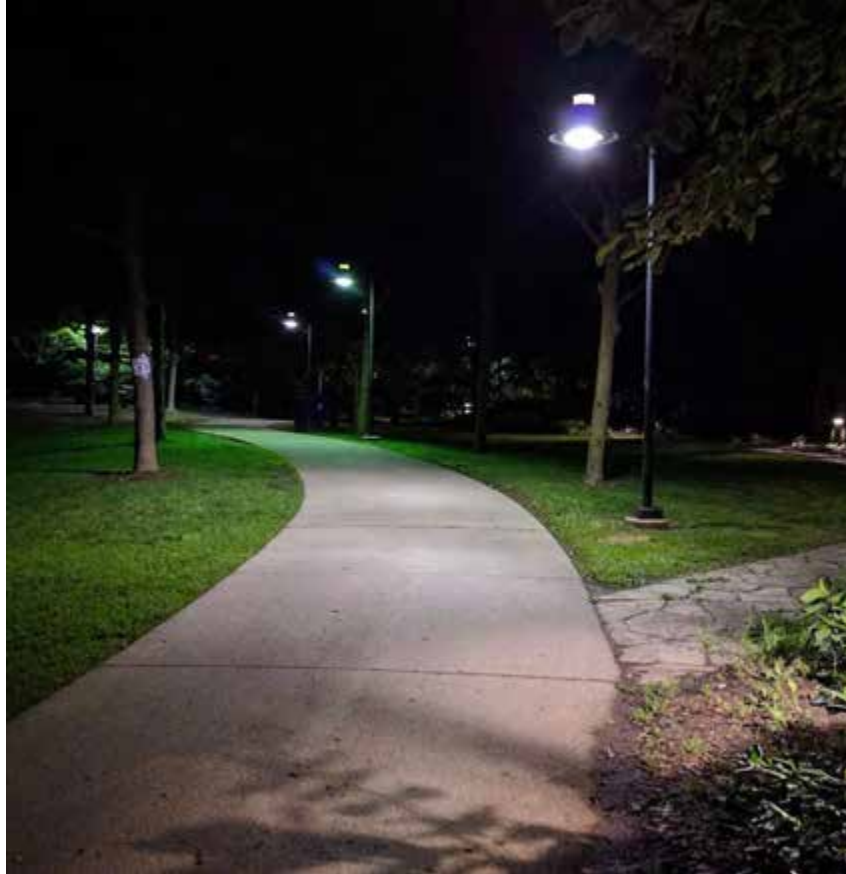


Keep active play contained within the park's existing designated zone

A more engaging play area for teenagers

A flexible, dynamic and multi-use sportcourt

Safety & Lighting – Guiding Principles

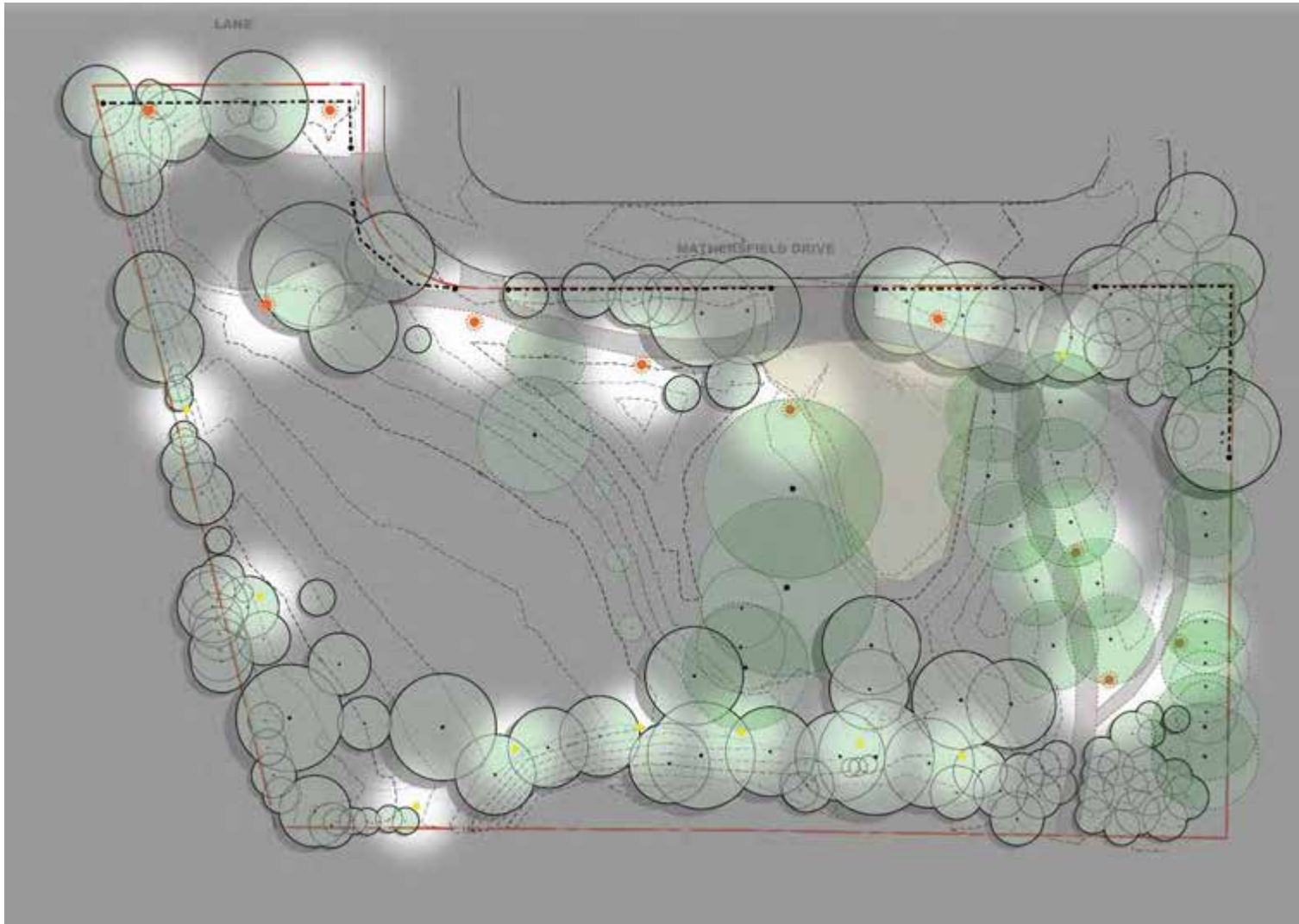


- Respect & enhance existing park
- Prioritize safety & comfort

Strong support for improved lighting,
especially in darker corners and pathways



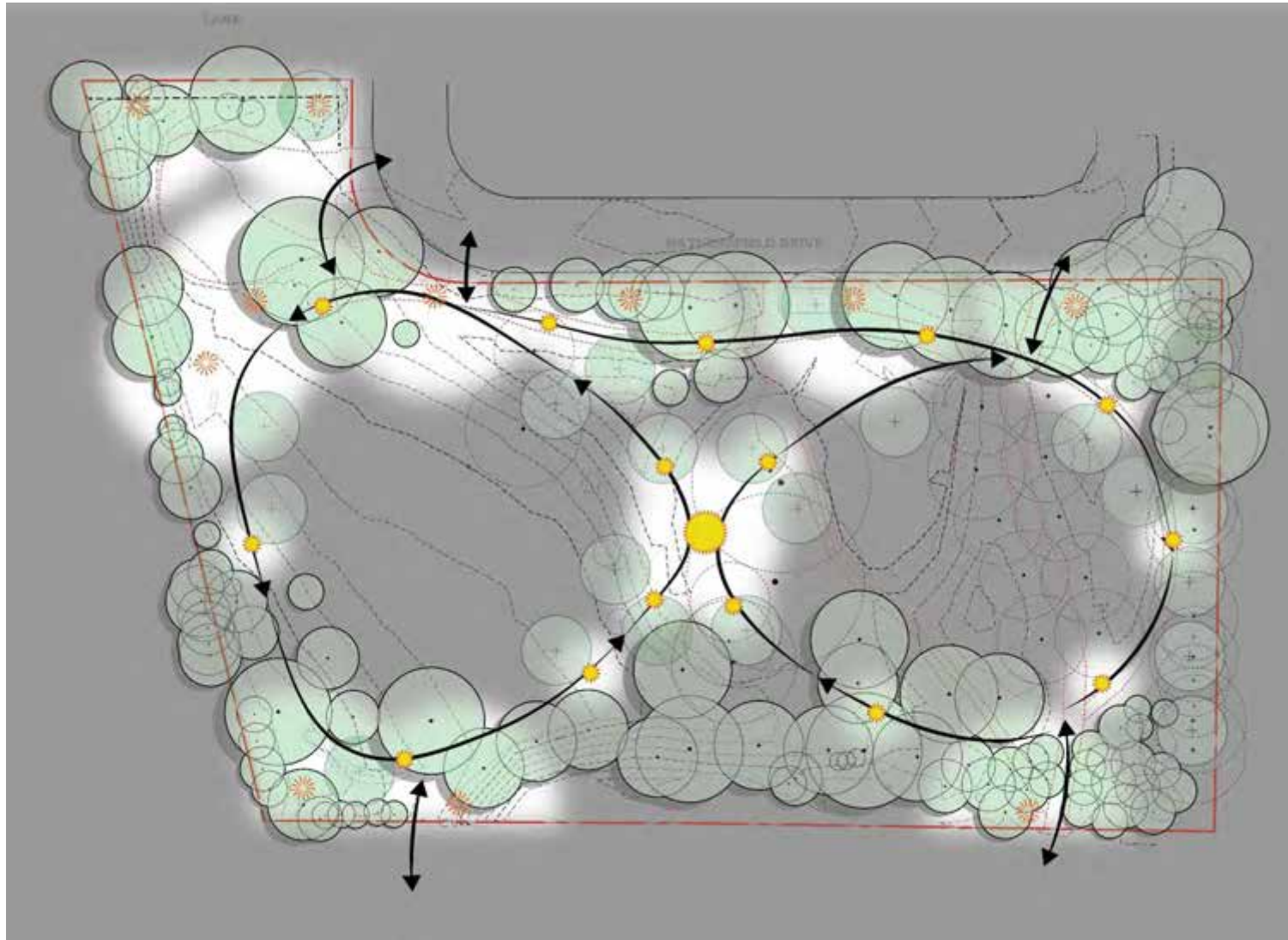
Safety & Lighting – Existing Light Plan



- Respect & enhance existing park
- Prioritize safety & comfort

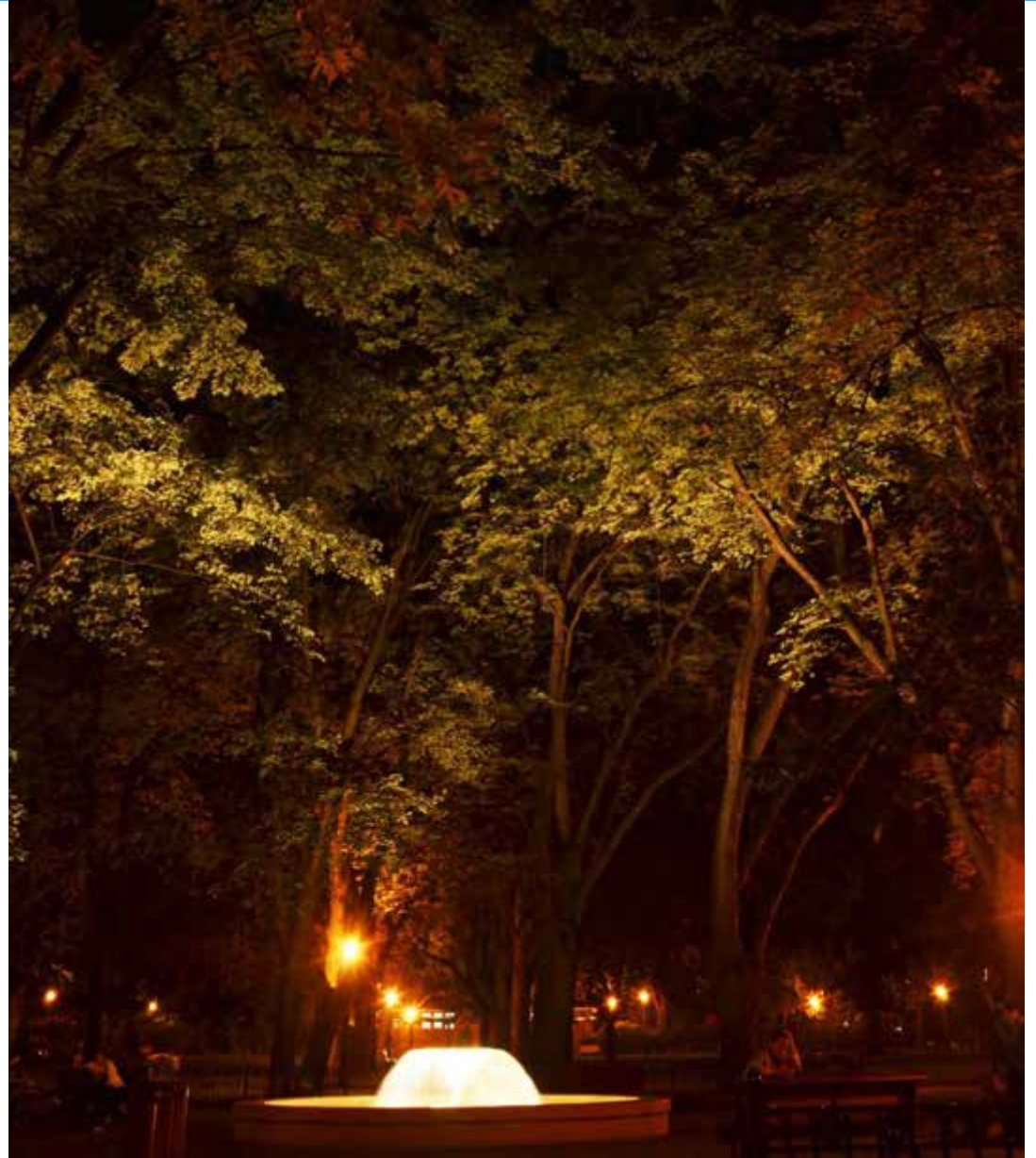
Strong support for improved lighting,
especially in darker corners and pathways

Safety & Lighting – Design Strategy

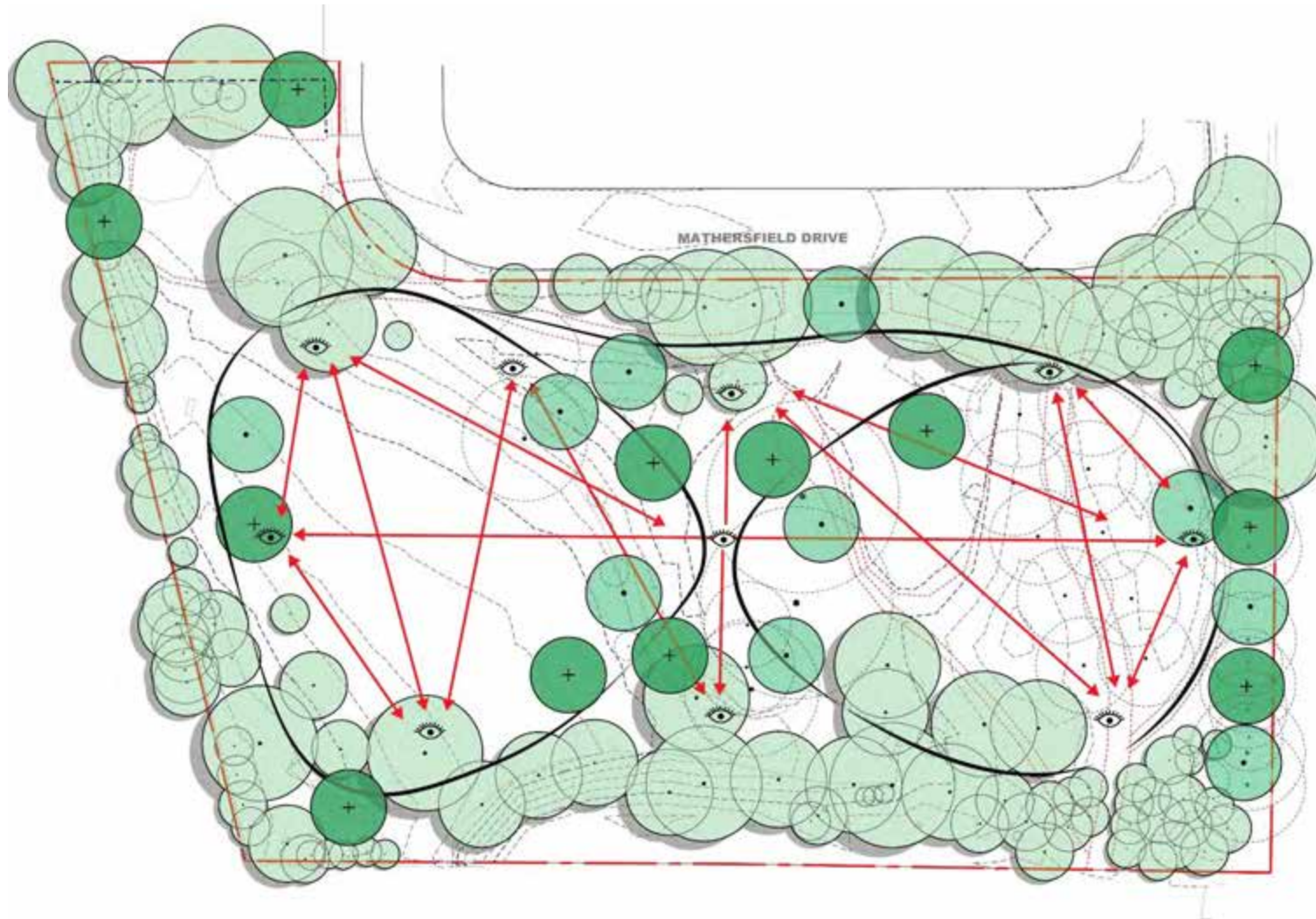


- Upgrade electrical infrastructure
- Add bollards & lightpoles along entire pathway
- Strategically position light poles to illuminate corners
- Uplight in the Water feature

Safety & Lighting – Examples of Bollards and Light Pole Strategy



Safety & Lighting – Results & Impacts



Improved sightlines throughout the park at night

Create a pleasant atmosphere while ensuring a sense of safety in the park at night

Stay respectful of the neighborhood

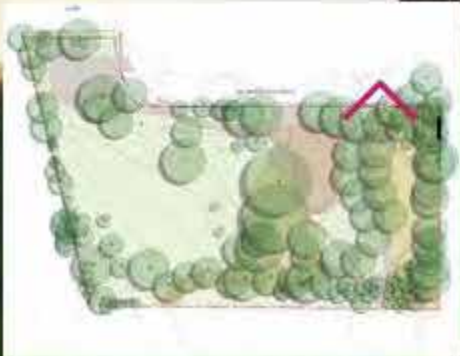
Enhance the character of the picturesque park at night

Facilitate routine maintenance

Proposed Park Improvements



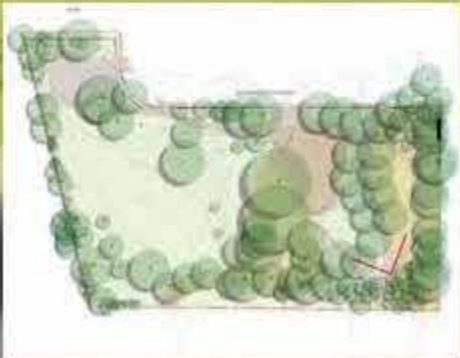
Mathersfield Drive Entrance – Existing View



Mathersfield Drive Entrance – Proposed View



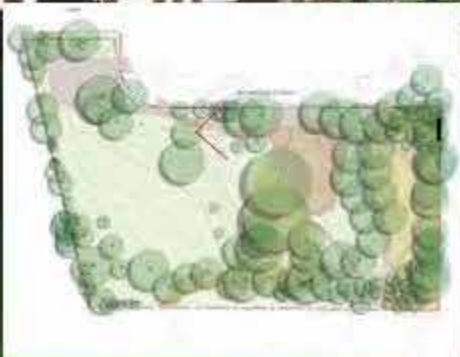
South Lawn – Existing View



South Lawn – Proposed View



Eastern Path Toward Trellis – Existing View



Eastern Path Toward Trellis – Proposed View



Central Hub– Existing View



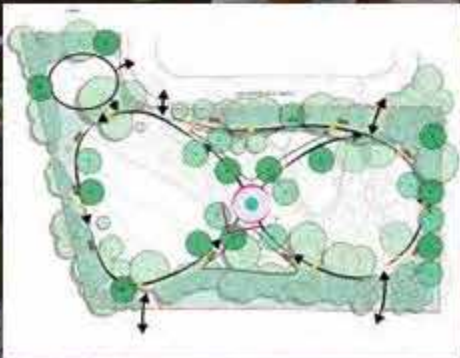
Central Hub– Proposed View



Central Hub With Playground – Existing View



Central Hub With Playground – Proposed View



North Lawn– Existing View



North Lawn – Proposed View



Q and A

30 Minutes

Engagement Next Steps

- The City will prepare a summary of this workshop. This will be shared with the project team and with the community on the web site.
- Once a revised design is created which includes the feedback from this workshop another survey will be sent to the community to share the design and gather feedback.

Project Next Steps

City Project Timeline:

- Spring to Winter 2025/2026: City-led community engagement
- Winter 2025/2026 to Spring 2026: Detailed design
- Summer 2026: Hire a construction team
- Fall 2026: Construction starts

The timeline is subject to change; construction timeline shared when confirmed

Elements of Design Workshop

80 minutes

Themed discussion areas:

Pathways, Lighting and Central Hub

Trees, Open Space and Plantings

Playground and Sports Court

Instructions:

- Please circulate around the three themed areas to review the material and provide your feedback.
- Each area has an engagement facilitator, a member of the design team, and an additional City Parks staff member to answer questions and support you providing feedback.
- There is also a general discussion area for those who wish to continue their conversations.

Daniel Fusca

Public Consultation Manager

Community Engagement

Christie Pearson

Project Manager

Capital Projects Design & Delivery

Thank you!



So, how did we do? Take a quick survey to share feedback on today's event:

<https://ca.mar.medallia.com/PricefieldMeeting>