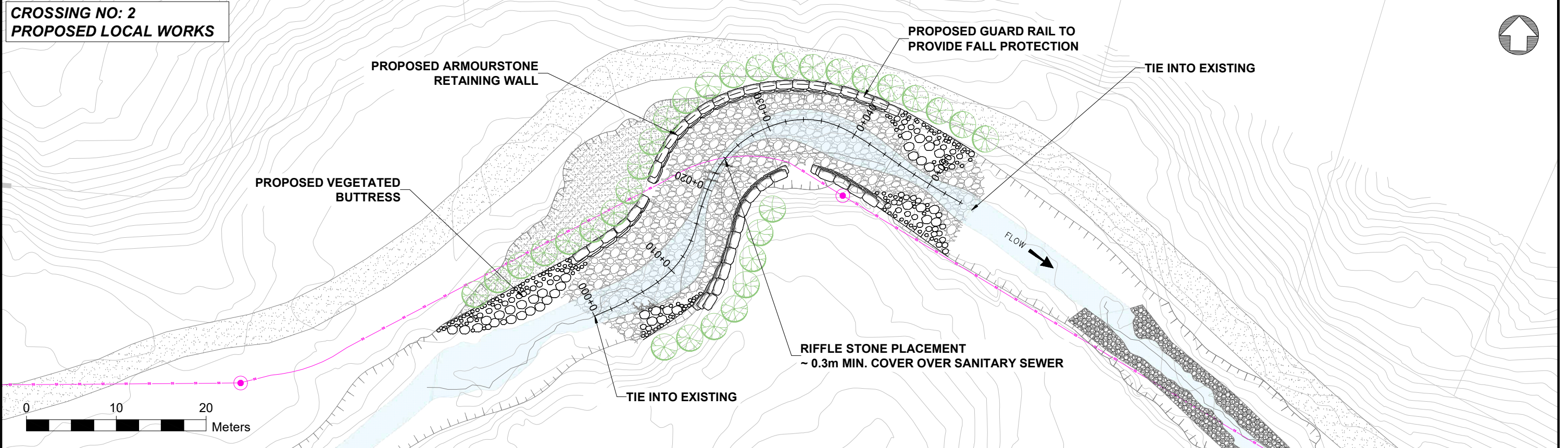
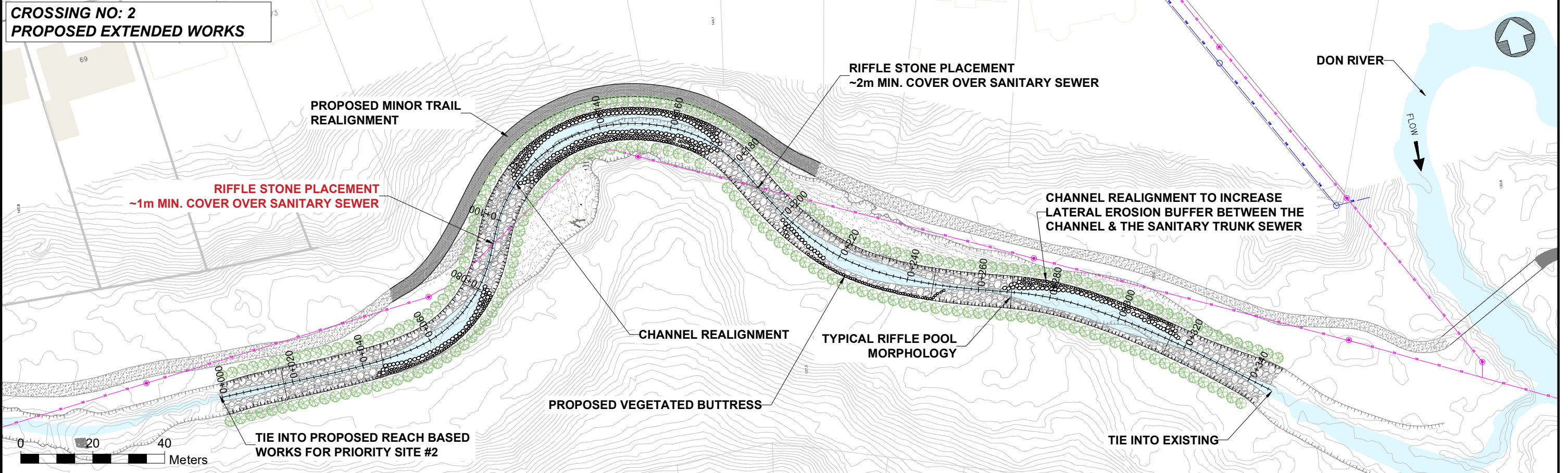

Appendix T (Part 1)

Erosion Hazard Sites

CROSSING NO: 2
PROPOSED LOCAL WORKS



CROSSING NO: 2
PROPOSED EXTENDED WORKS



CROSSING NO: 3
PROPOSED LOCAL WORKS

PROPOSED VEGETATED BUTTRESS

TIE INTO EXISTING

**RIFFLE STONE PLACEMENT
~ 0.3m MIN. COVER OVER SANITARY SEWER**

TIE INTO EXISTING

0 10 20
Meters

**CROSSING NO: 3
PROPOSED EXTENDED WORKS**

CHANNEL REALIGNMENT TO INCREASE LATERAL EROSION OFFSET AT PRIORITY SITE #27 FROM 4.00M TO 13.90M

CHANNEL REALIGNMENT TO INCREASE LATERAL EROSION OFFSET AT PRIORITY SITE #25 FROM 0.25M TO 10.39M

PROPOSED ARMOURSTONE RETAINING WALL

RIFFLE STONE PLACEMENT
~1.8m MIN. COVER OVER SANITARY SEWER

RIFFLE STONE PLACEMENT
~1m MIN. COVER OVER SANITARY SEWER

TIE INTO EXISTING

TYPICAL RIFFLE POOL MORPHOLOGY

PROPOSED VEGETATED BUTTRESS

TYPICAL RIFFLE POOL MORPHOLOGY

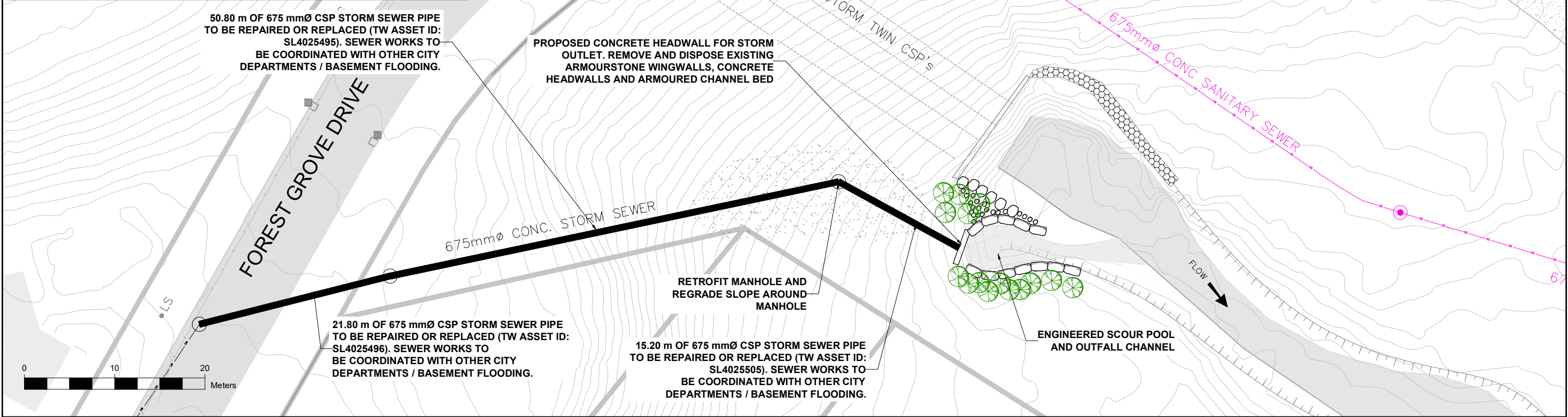
CHANNEL REALIGNMENT

TIE INTO PROPOSED REACH BASED WORKS FOR PRIORITY SITE #1

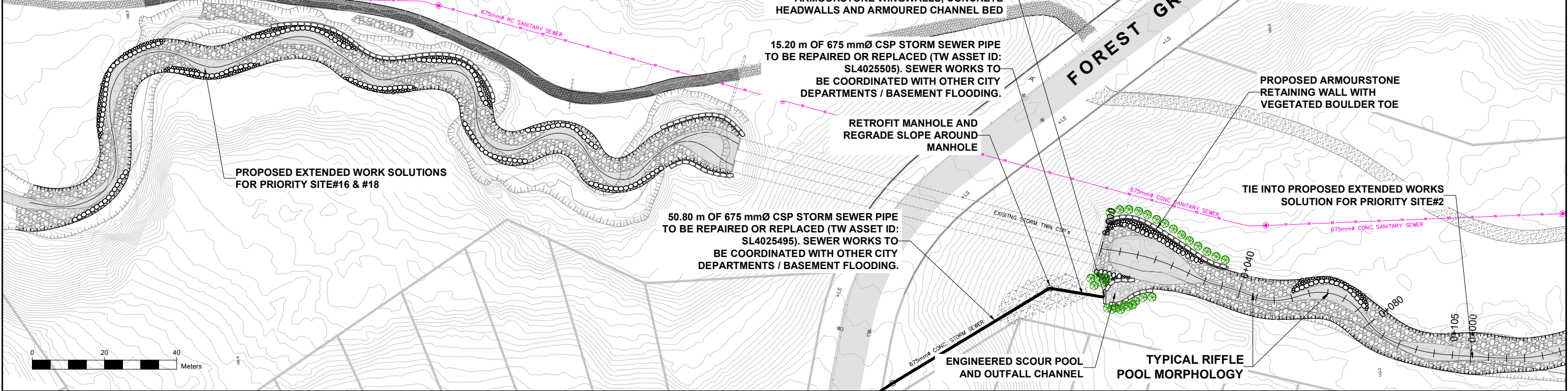
0 20 40 Meters

113 111 8 6

**STORM SEWER OUTFALL# 3 AT FOREST GROVE DRIVE
OF4854214333
PROPOSED LOCAL WORKS**



**STORM SEWER OUTFALL #3 AT FOREST GROVE DRIVE
OF4854214333
PROPOSED EXTENDED WORKS**



**STORM SEWER OUTFALL AT CANARY CRESCENT
OF4884313907
PROPOSED LOCAL WORKS**

**48 m OF 525 mmØ CMP STORM SEWER PIPE TO
BE REPAIRED OR REPLACED (TW ASSET ID:
SL4025521). SEWER WORKS TO
BE COORDINATED WITH OTHER CITY
DEPARTMENTS / BASEMENT FLOODING.**

**46.40 m OF 525 mmØ CMP STORM SEWER PIPE
TO BE REPAIRED OR REPLACED (TW ASSET
ID: SL4025522). SEWER WORKS TO
BE COORDINATED WITH OTHER CITY
DEPARTMENTS / BASEMENT FLOODING.**

REMOVE AND DISPOSE EXISTING FAILED CONCRETE HEADWALL STRUCTURE

52.5mm Ø CMP. STM SEWER

ENGINEERED SCOUR POOL AND OUTFALL CHANNEL

STUDY SITE

0 10 km

North Fork of the River

Flow

675mm Ø CP. SAN SEWER

**STORM SEWER OUTFALL AT CANARY CRESCENT
OF4884313907
PROPOSED EXTENDED WORKS**

**48 m OF 525 mmØ CMP STORM SEWER PIPE TO
BE REPAIRED OR REPLACED (TW ASSET ID:
SL4025521). SEWER WORKS TO
BE COORDINATED WITH OTHER CITY
DEPARTMENTS / BASEMENT FLOODING.**

**46.40 m OF 525 mmØ CMP STORM SEWER PIPE
TO BE REPAIRED OR REPLACED (TW ASSET
ID: SL4025522). SEWER WORKS TO
BE COORDINATED WITH OTHER CITY
DEPARTMENTS / BASEMENT FLOODING.**

INFILL GULLY, REGRADE AND RESTORE WITH TOPSOIL, COIRMATting AND PLANTINGS

**PROPOSED MANHOLE TO
FACILITATE PIPE REALIGNMENT**

**REALIGN 7.5m OF 675 mm Ø
CONCRETE STORM PIPE**

**PROPOSED CONCRETE
HEADWALL FOR STORM-
OUTFALL CHANNEL**

ENGINEERED SCOUR POOL AND OUTFALL CHANNEL

**PROPOSED VEGETATED
BUTTRESS BANK**

**REMOVE AND DISPOSE EXISTING FAILED
CONCRETE HEADWALL STRUCTURE**

Toronto Water

er NEWTONBROOK CREEK GEOMORPHIC SYSTEMS MASTER PLAN

City of Toronto

STORM SEWER OUTFALL AT SUMMER HEIGHT DR - PROPOSED LOCAL AND EXTENDED WORKS

DESIGN:		DRAFTING:	AB	CHECK:		CONTRACT No.	
SCALE:	HORIZONTAL	LOCAL WORKS: 1:150 EXTENDED WORKS: 1:250		DRAWING			SHEET No. 1 OF 2
DATE:	25/05/2022		NUMBER:				



LEGEND

- STORM SEWER CREEK EXISTING TRAIL
 SANITARY SEWER  PROPERTY LINE
 STORM SEWER MANHOLE  WATER MAIN
 SANITARY SEWER MANHOLE OUTFALL

No.	DATE	REVISIONS	INITIAL	SIGNED