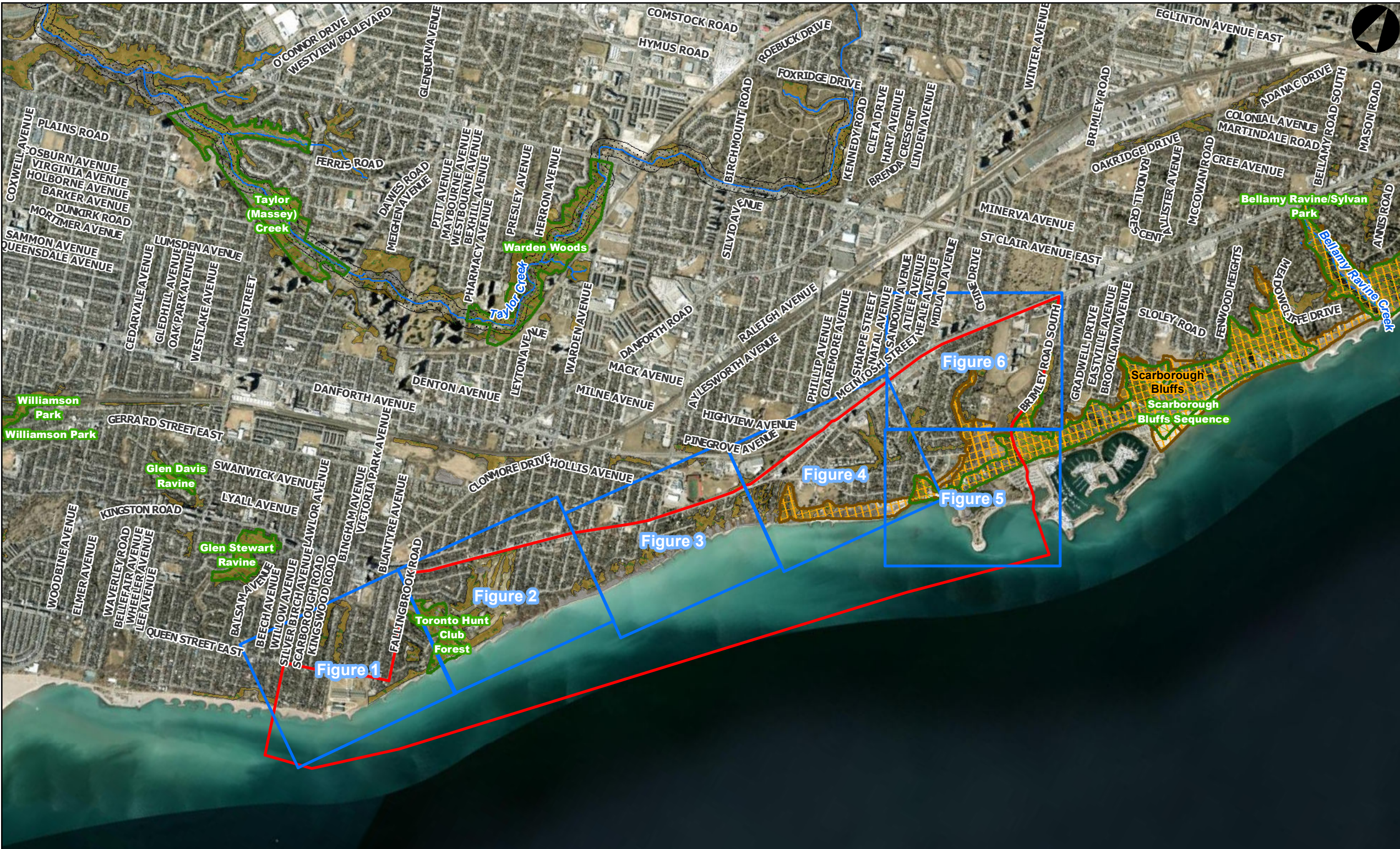



APPENDIX D – Natural Environment Figures


Significant Natural Area Maps





LEGEND

 Study Area


Terrestrial LIO Data

 Environmentally Significant Areas

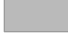
 ANSI


 Watercourses

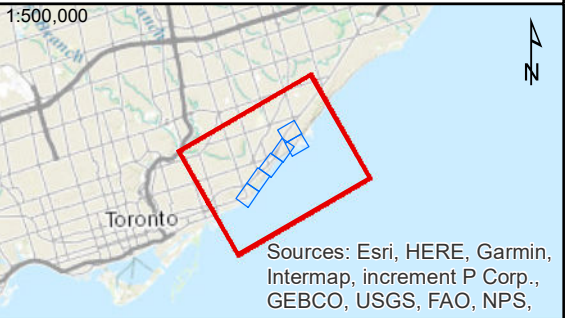
Greenbelt Designation

 Urban River Valley


Wetlands

 Unevaluated Wetlands

 Wooded Areas



Coordinate System: NAD 1983 UTM Zone 17N
Sources: MNRF



SCALE: 1:30,000
0 200 400 800 1,200 1,600
Meters

TITLE:
Significant Natural Areas

PROJECT NO.: 220171000
Scarborough Waterfront West IEA

DATE: February 2024
Overview



LEGEND

Study Area

Transportation Network

Arterial / Collector

Local Roads

Terrestrial LIO Data

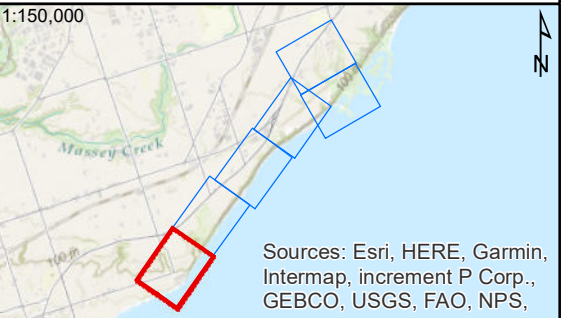
Waterbodies

Environmentally Significant Areas

Wooded Areas

Wetlands

Unevaluated Wetlands



Coordinate System: NAD 1983 UTM Zone 17N
Sources: MNR

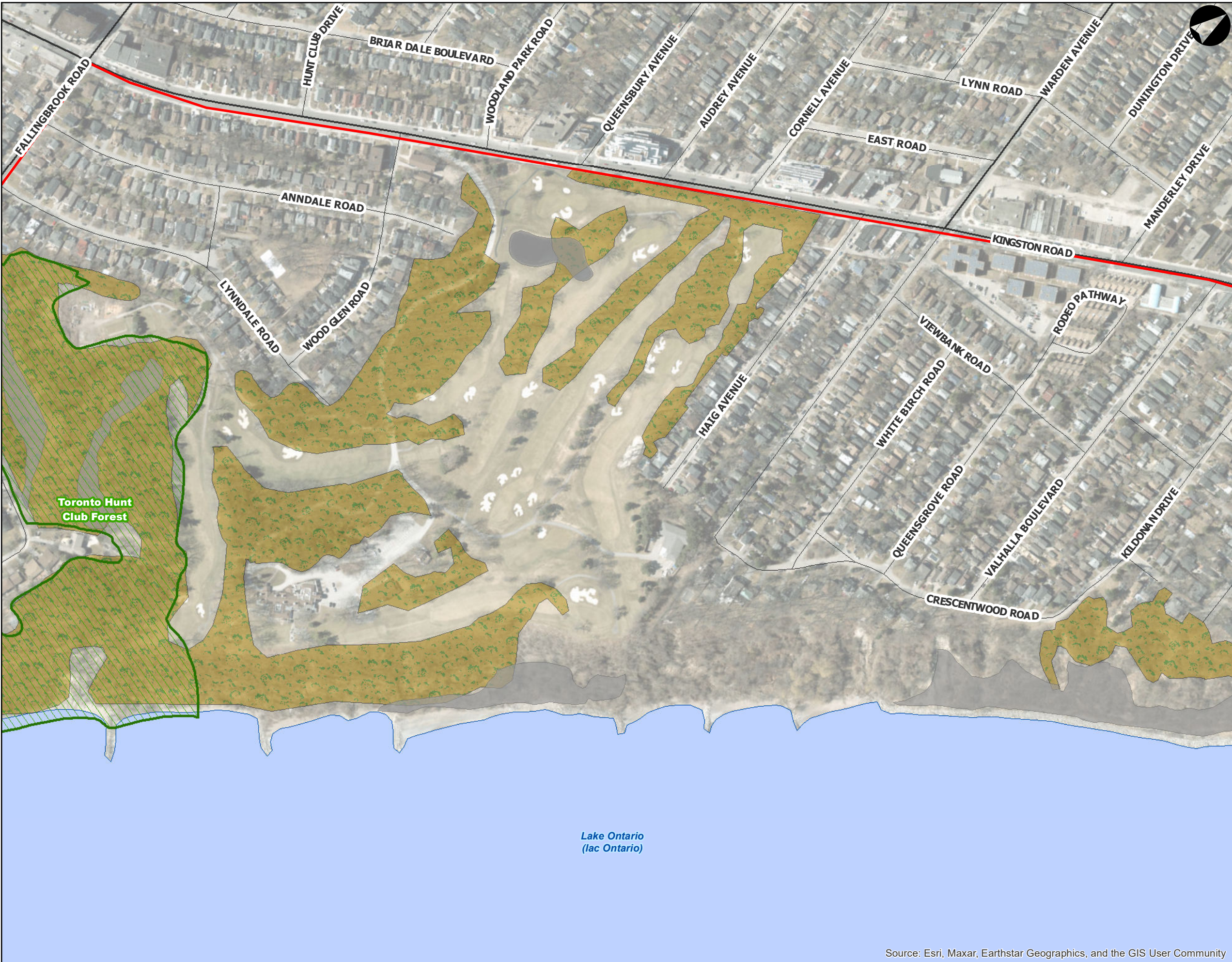
MORRISON HERSHFIELD

SCALE: 1:3,800
0 30 60 120 180 240
Meters


TITLE:
Significant Natural Areas

PROJECT NO.: 22017100
Scarborough Waterfront West IEA


DATE: **February 2024** **Figure 1 of 6**




LEGEND


 Study Area


Transportation Network


 Arterial / Collector

 Local Roads

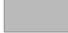
Terrestrial LIO Data

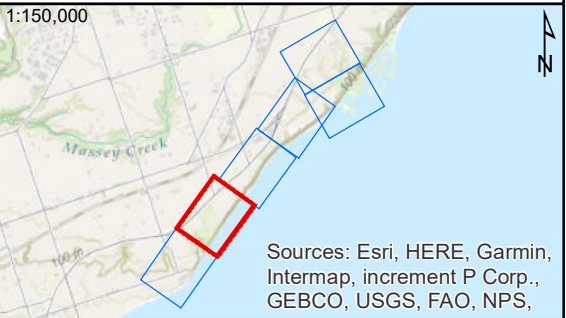
 Waterbodies

 Environmentally Significant Areas


 Wooded Areas

Wetlands

 Unevaluated Wetlands



Coordinate System: NAD 1983 UTM Zone 17N
Sources: MNRF



SCALE: 1:3,800
0 30 60 120 180 240
Meters

TITLE:
Significant Natural Areas

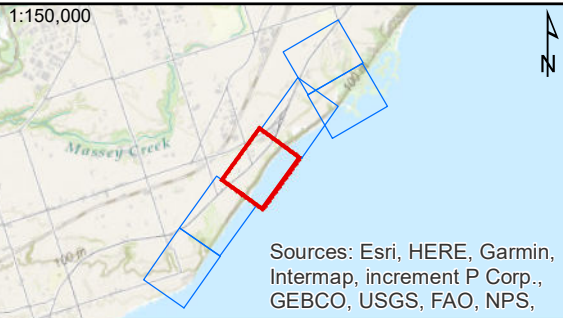
PROJECT NO.: 22017100
Scarborough Waterfront West IEA

DATE: **February 2024**

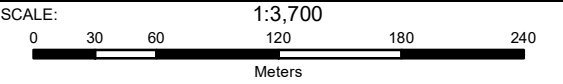
Figure 2 of 6



- LEGEND**
- Study Area
 - Transportation Network**
 - Arterial / Collector
 - Local Roads
 - Terrestrial LIO Data**
 - Waterbodies
 - Wooded Areas
 - Wetlands**
 - Unevaluated Wetlands



Sources: Esri, HERE, Garmin, Intermap, increment P Corp., GEBCO, USGS, FAO, NPS, Sources: MNRF



TITLE:

Significant Natural Areas

PROJECT NO.: 22017100

Scarborough Waterfront West IEA

DATE: **February 2024**

Figure 3 of 6

Source: Esri, Maxar, Earthstar Geographics, and the GIS User Community



LEGEND

Study Area

Transportation Network

Arterial / Collector

Local Roads

Terrestrial LIO Data

Waterbodies

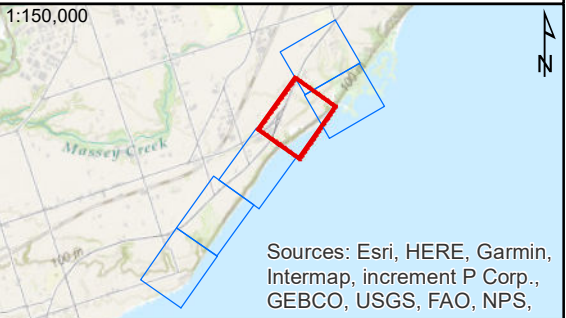
ANSI

Environmentally Significant Areas

Wooded Areas

Wetlands

Unevaluated Wetlands



Coordinate System: NAD 1983 UTM Zone 17N
Sources: MNRF

MORRISON HERSHFIELD

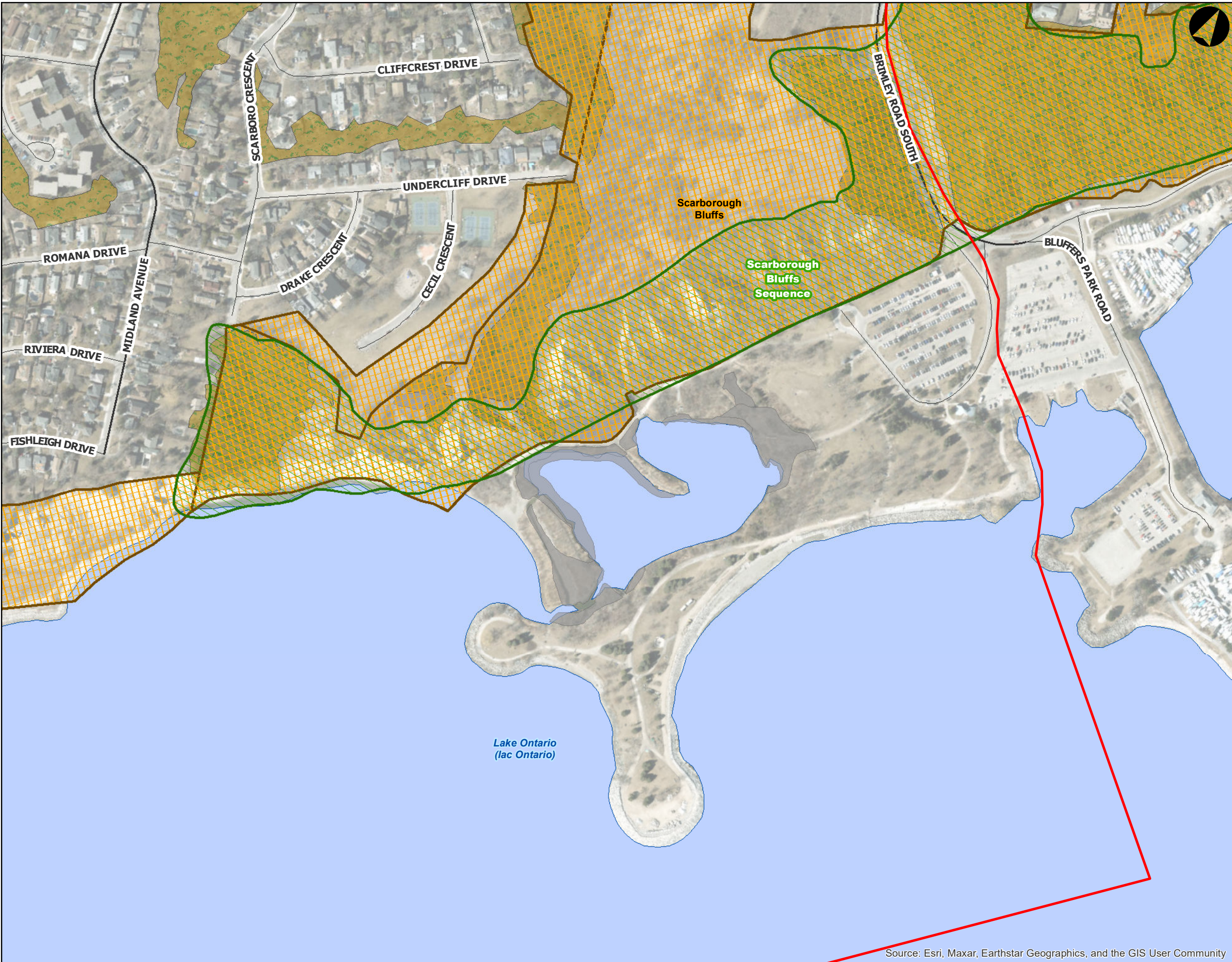
SCALE: 1:3,800
0 30 60 120 180 240
Meters

TITLE:
Significant Natural Areas

PROJECT NO.: 22017100
Scarborough Waterfront West IEA

DATE: **February 2024**

Figure 4 of 6



LEGEND

Study Area

Transportation Network

Arterial / Collector

Local Roads

Terrestrial LIO Data

Waterbodies

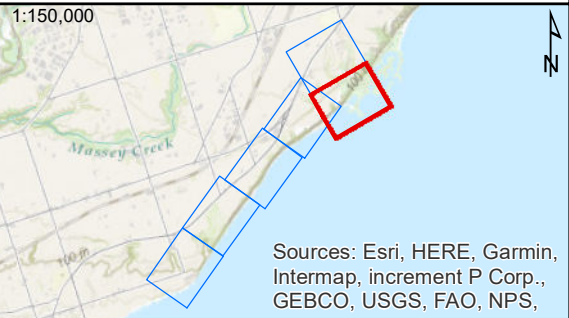
ANSI

Environmentally Significant Areas

Wooded Areas

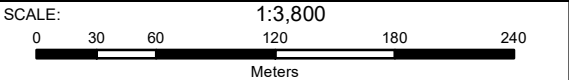
Wetlands

Unevaluated Wetlands



1:150,000

Sources: Esri, HERE, Garmin, Intermap, increment P Corp., GEBCO, USGS, FAO, NPS,



TITLE:

Significant Natural Areas

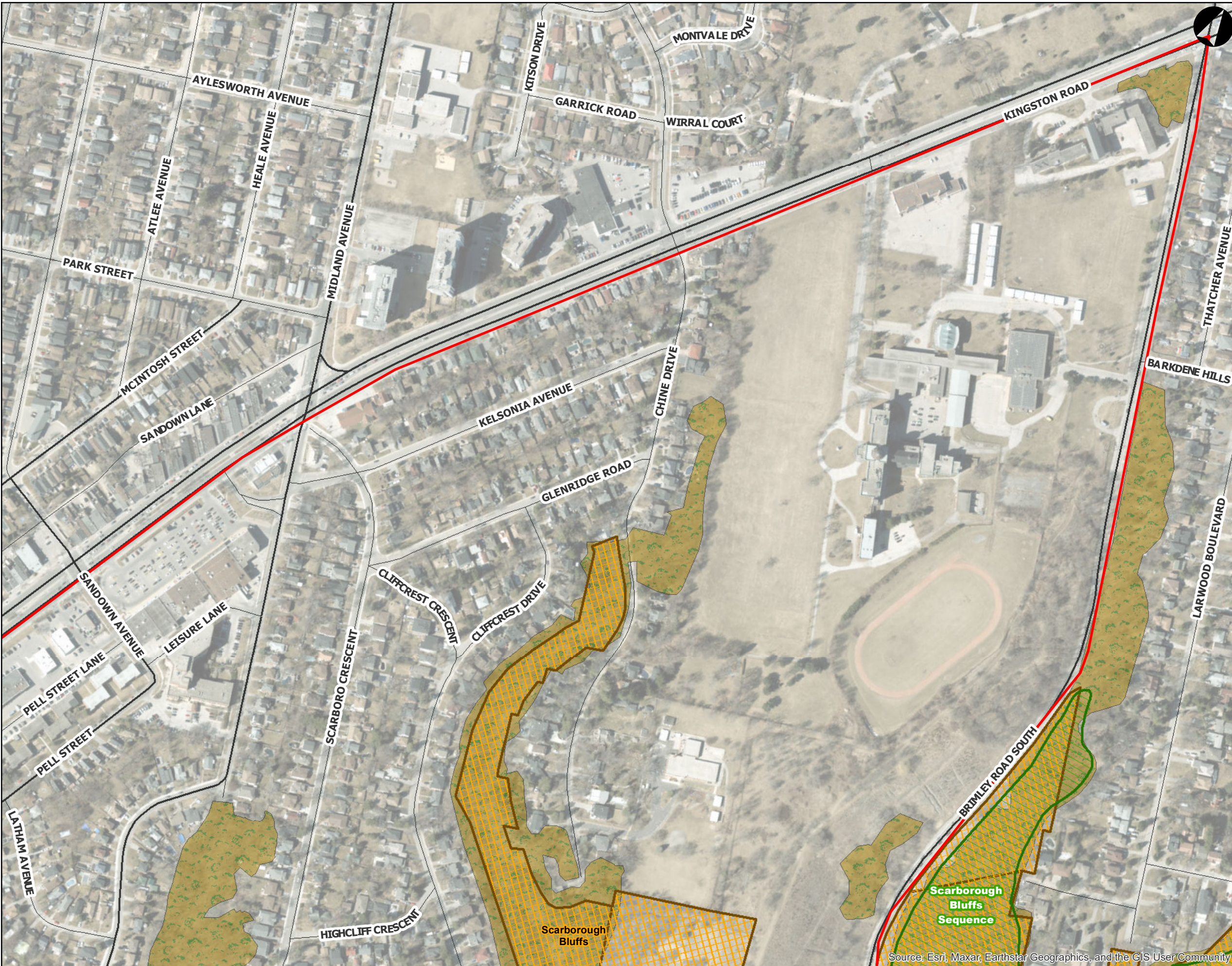
PROJECT NO.: 22017100

Scarborough Waterfront West IEA


DATE: **February 2024**

Figure 5 of 6

Source: Esri, Maxar, Earthstar Geographics, and the GIS User Community




LEGEND

 Study Area

Transportation Network


 Arterial / Collector

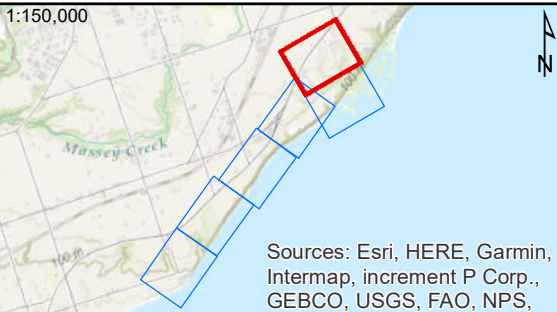
 Local Roads

Terrestrial LIO Data

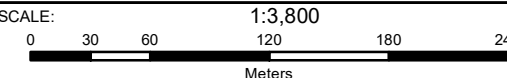
 ANSI

 Environmentally Significant Areas

 Wooded Areas



Coordinate System: NAD 1983 UTM Zone 17N
Sources: MNR



TITLE:
Significant Natural Areas

PROJECT NO.: 22017100
Scarborough Waterfront West IEA

DATE: **February 2024**

Figure 6 of 6

Source: Esri, Maxar, Earthstar Geographics, and the GIS User Community