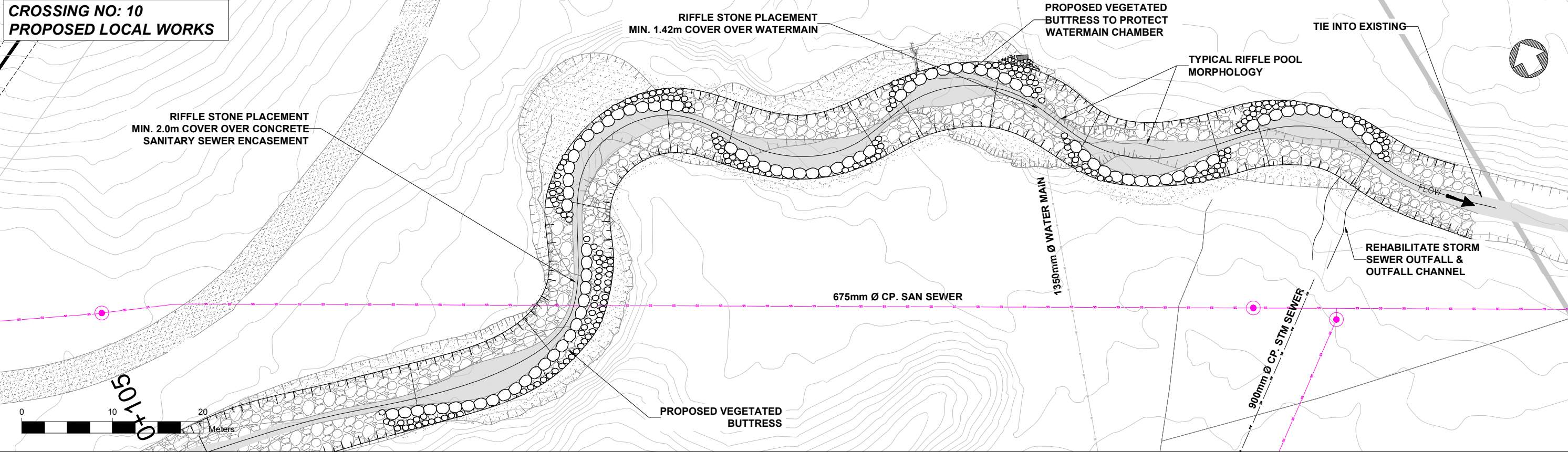
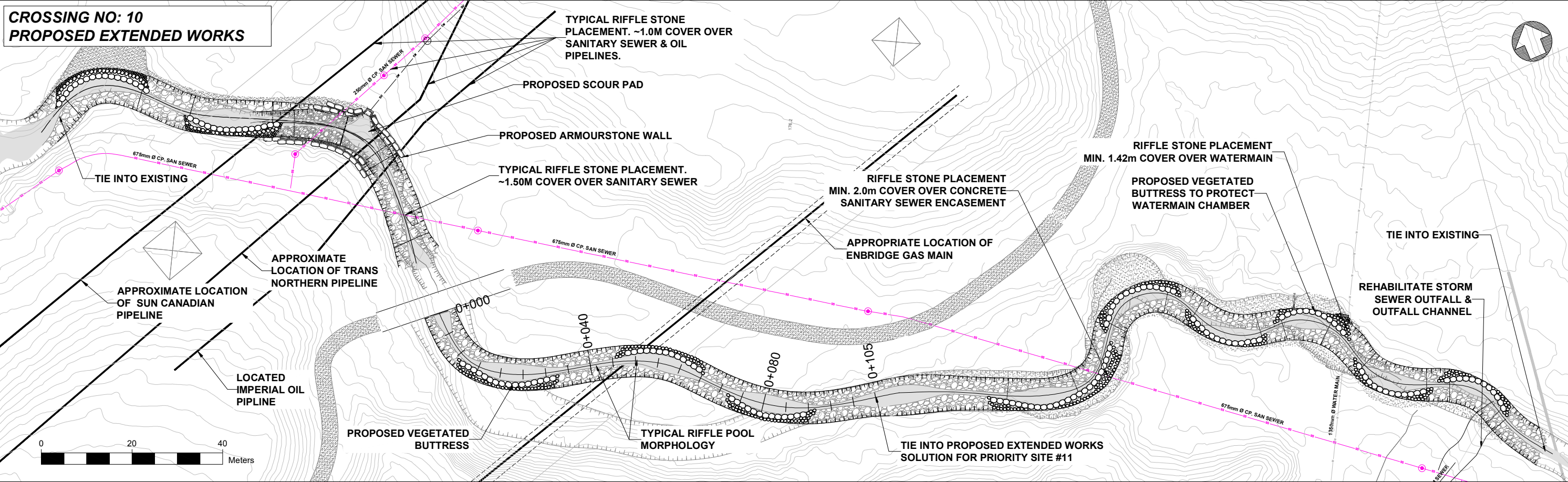

Appendix T (Part 4)


Erosion Hazard Sites

CROSSING NO: 10
PROPOSED LOCAL WORKS




CROSSING NO: 10
PROPOSED EXTENDED WORKS





No.	DATE	REVISIONS	INITIAL	SIGNED



LEGEND

— SW	STORM SEWER	— CREEK	— EXISTING TRAIL
—	SANITARY SEWER	— PROPERTY LINE	—
○	STORM SEWER MANHOLE	— WATER MAIN	—
●	SANITARY SEWER MANHOLE	— OUTFALL	—

Toronto Water

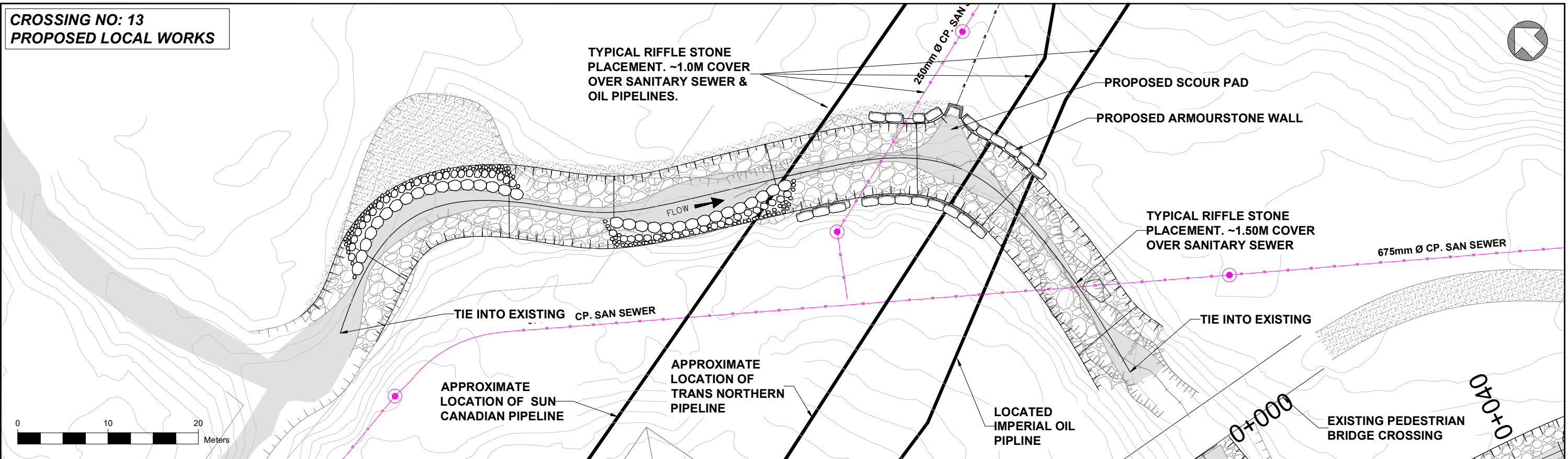
NEWTONBROOK CREEK GEOMORPHIC SYSTEMS MASTER PLAN

City of Toronto

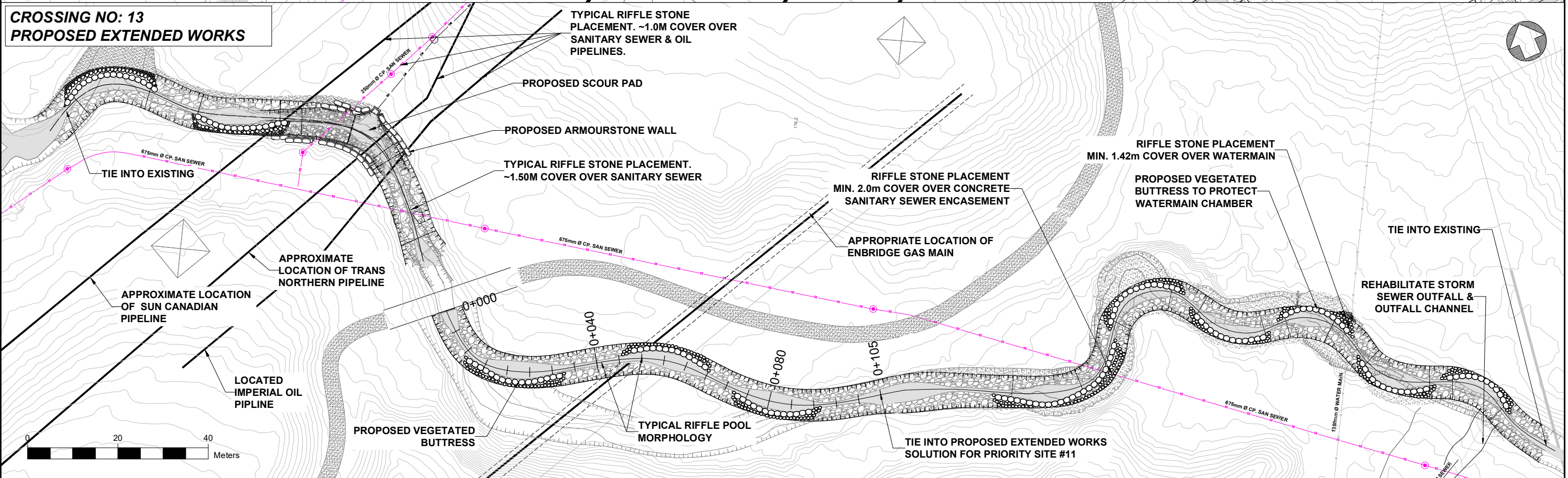
CROSSING NO. 10 - PROPOSED LOCAL AND EXTENDED WORKS

DESIGN:	DRAFTING: AB	CHECK:	CONTRACT No.
SCALE:	HORIZONTAL LOCAL WORKS: 1:200 EXTENDED WORKS: 1:400	DRAWING	SHEET No. 2 OF 2
DATE:	25/05/2022	NUMBER:	

CROSSING NO: 13
PROPOSED LOCAL WORKS







CROSSING NO: 13
PROPOSED EXTENDED WORKS



No.	DATE	REVISIONS	INITIAL	SIGNED



LEGEND

	STORM SEWER		CREEK		EXISTING TRAIL
	SANITARY SEWER		PROPERTY LINE		
	STORM SEWER MANHOLE		WATER MAIN		
	SANITARY SEWER MANHOLE		OUTFALL		

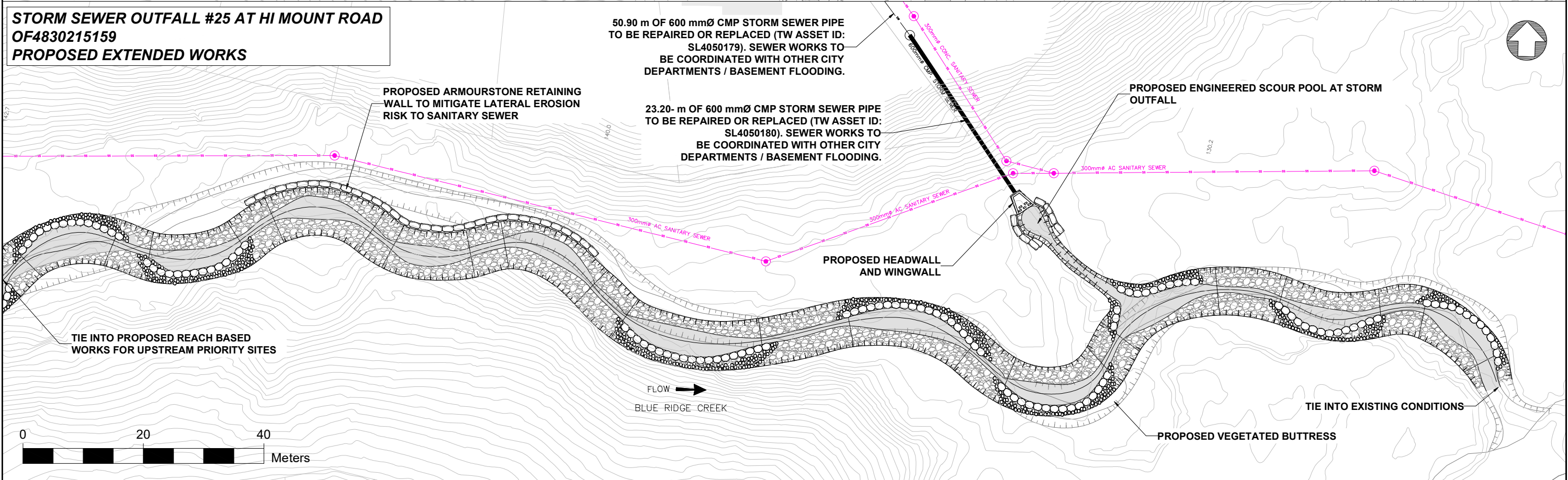
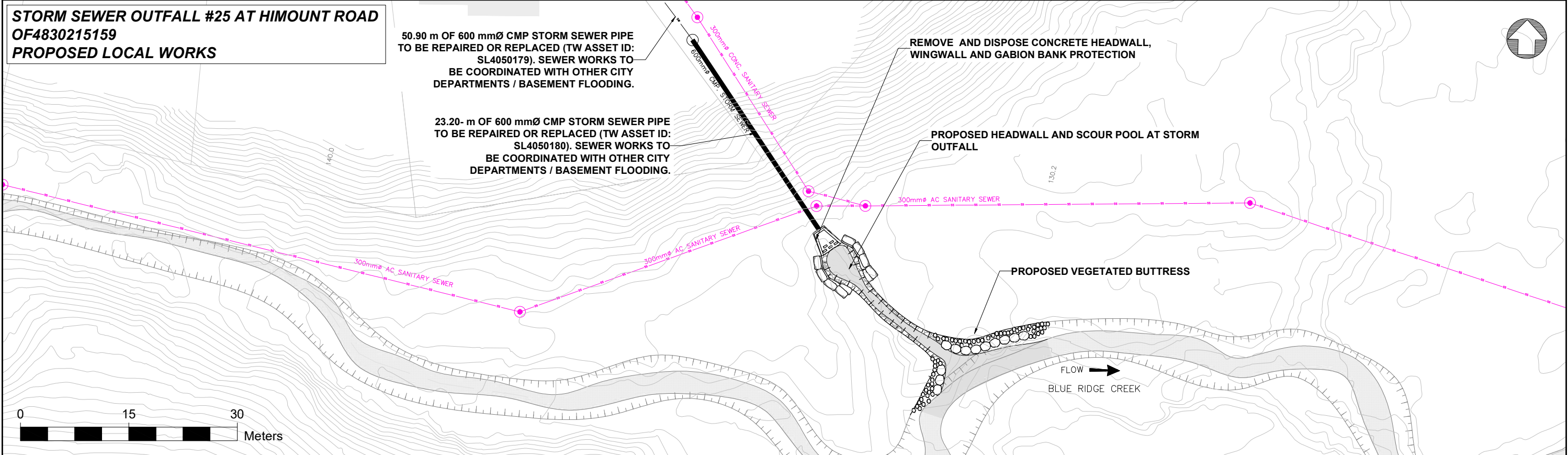
Toronto Water

er NEWTONBROOK CREEK GEOMORPHIC SYSTEMS MASTER PLAN

City of Toronto

CROSSING NO. 2 - PROPOSED LOCAL AND EXTENDED WORKS

DESIGN:		DRAFTING:	AB	CHECK:		CONTRACT No.	
SCALE:	HORIZONTAL	LOCAL WORKS- 1:200 EXTENDED WORKS- 1:400		DRAWING	SHEET No. 2 OF 2		
DATE:	25/05/2022		NUMBER:				



				NEWTONBROOK CREEK GEOMORPHIC SYSTEMS MASTER PLAN	
				City of Toronto	
				STORM SEWER OUTFALL AT HI MOUNT ROAD - PROPOSED LOCAL AND EXTENDED WORKS	
DESIGN:	DRAFTING:	AB	CHECK:	CONTRACT No.	
SCALE:	HORIZONTAL LOCAL WORKS-1:200 EXTENDED WORKS-1:300		DRAWING	SHEET No.	
DATE:	25/05/2022		NUMBER:	1 OF 2	

No.	DATE	REVISIONS	INITIAL	SIGNED

Consultants	

LEGEND	
— TW	STORM SEWER
— SS	SANITARY SEWER
○	STORM SEWER MANHOLE
●	SANITARY SEWER MANHOLE
—	CREEK
—	PROPERTY LINE
—	WATER MAIN
—	OUTFALL
—	EXISTING TRAIL