

---

**Appendix B**

**TRCA Erosion Site Locations**

---

**Legend**

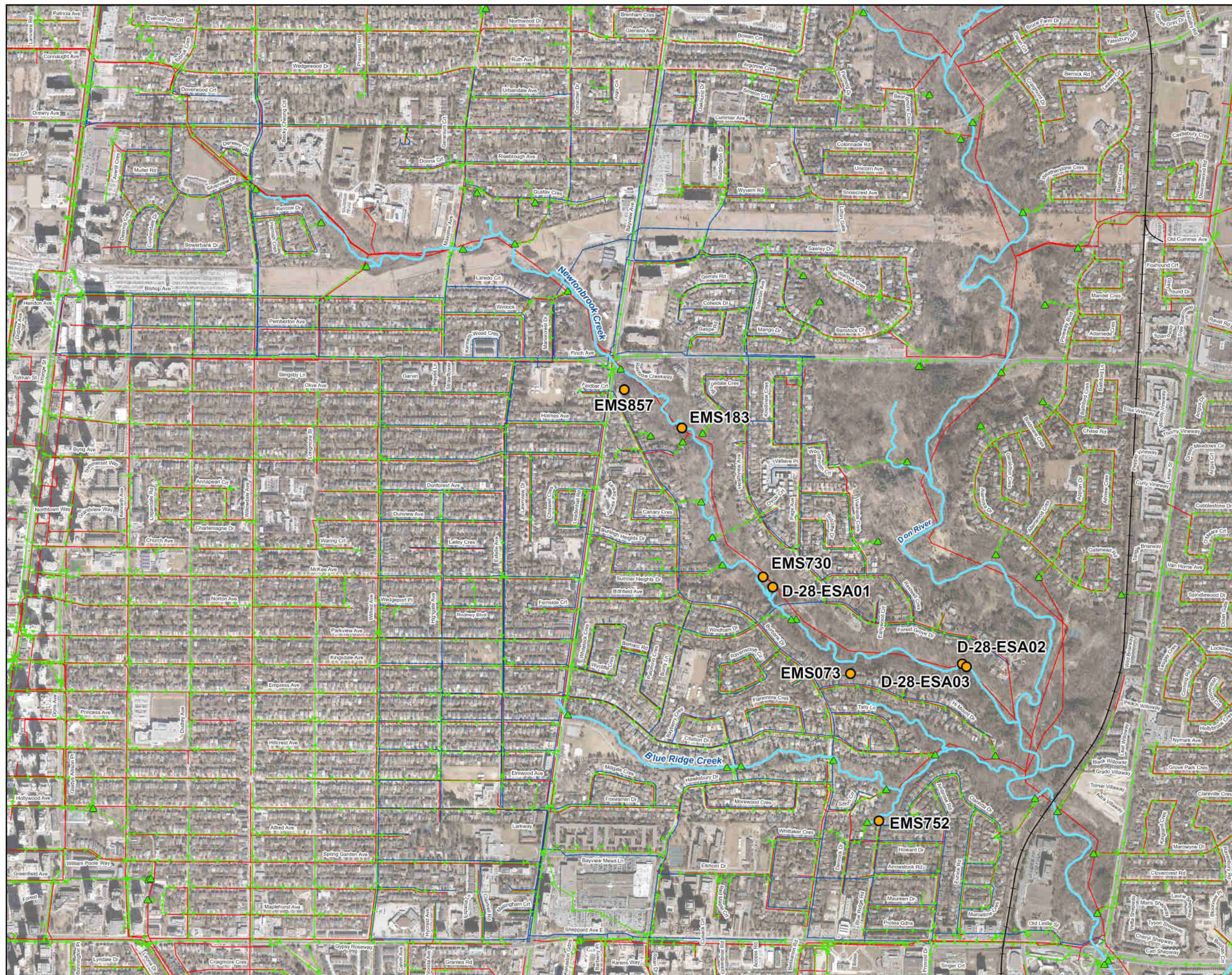
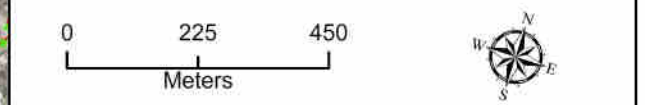
- Railway
- Watercourse
- Storm Sewer
- ▲ Storm Outfall
- Sanitary Sewer
- Watermain
- Erosion Control Assets

**KEY MAP**



Figure  
Blue Ridge Creek and Newtonbrook Creek  
Erosion Control Assets

Date: 2021-09-01  
Projection: NAD83\_UTM\_Zone\_17N  
Data Source: City of Toronto, TRCA  
Created by: A.V.



### Legend

- Railway
- Watercourse
- Storm Sewer
- Storm Outfall
- Sanitary Sewer
- Watermain
- Water Erosion Risk Monitoring

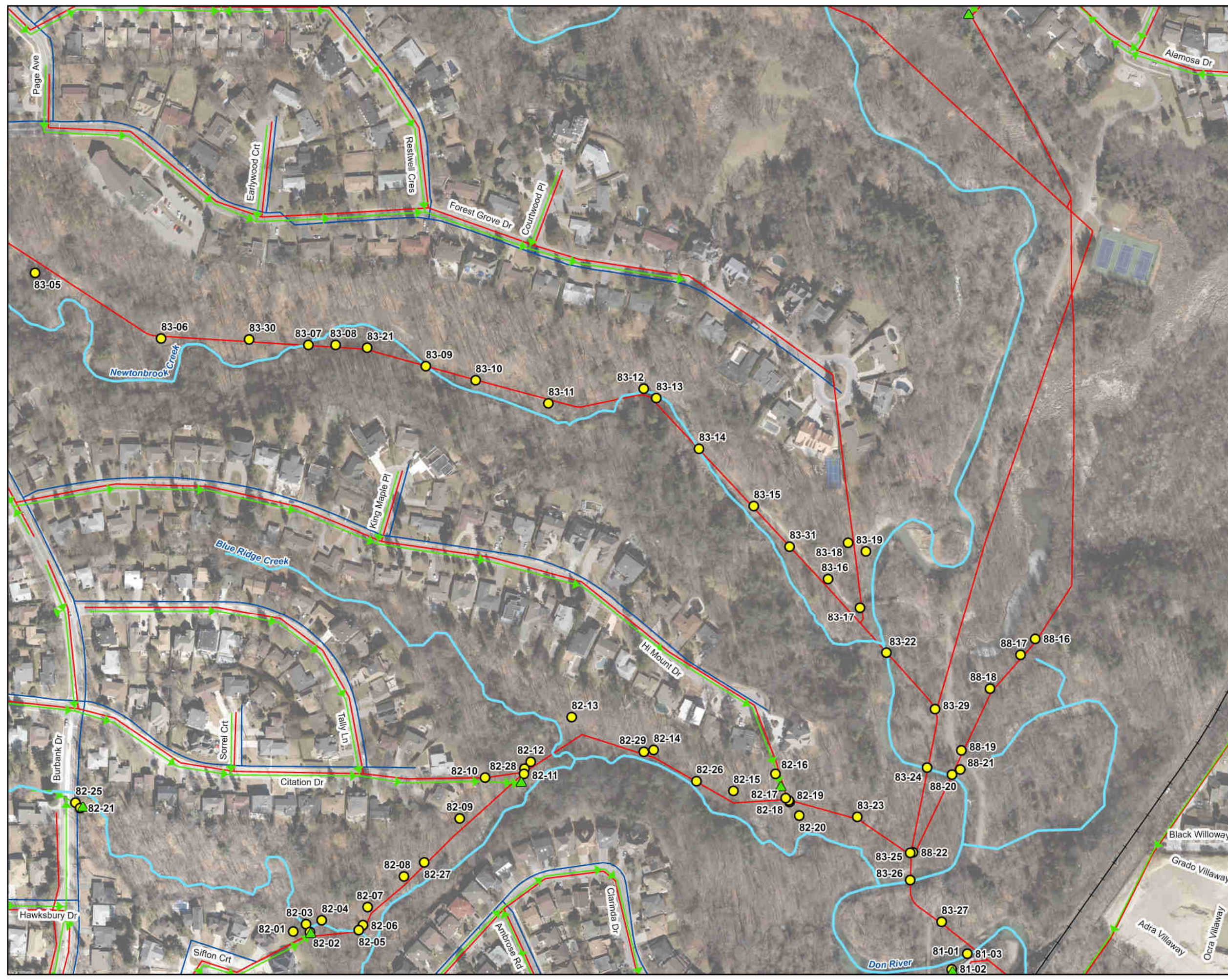
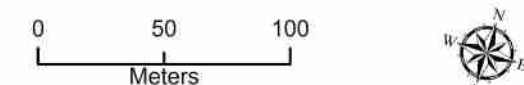
### KEY MAP



### Figure

Blue Ridge Creek and Newtonbrook Creek Water Erosion Risk Monitoring (Newtonbrook Creek (1))

Date: 2021-09-01  
 Projection: NAD83\_UTM\_Zone\_17N  
 Data Source: City of Toronto, TRCA  
 Created by: A.V.



### Legend

- Railway
- Watercourse
- Storm Sewer
- Storm Outfall
- Sanitary Sewer
- Watermain
- Water Erosion Risk Monitoring

### KEY MAP



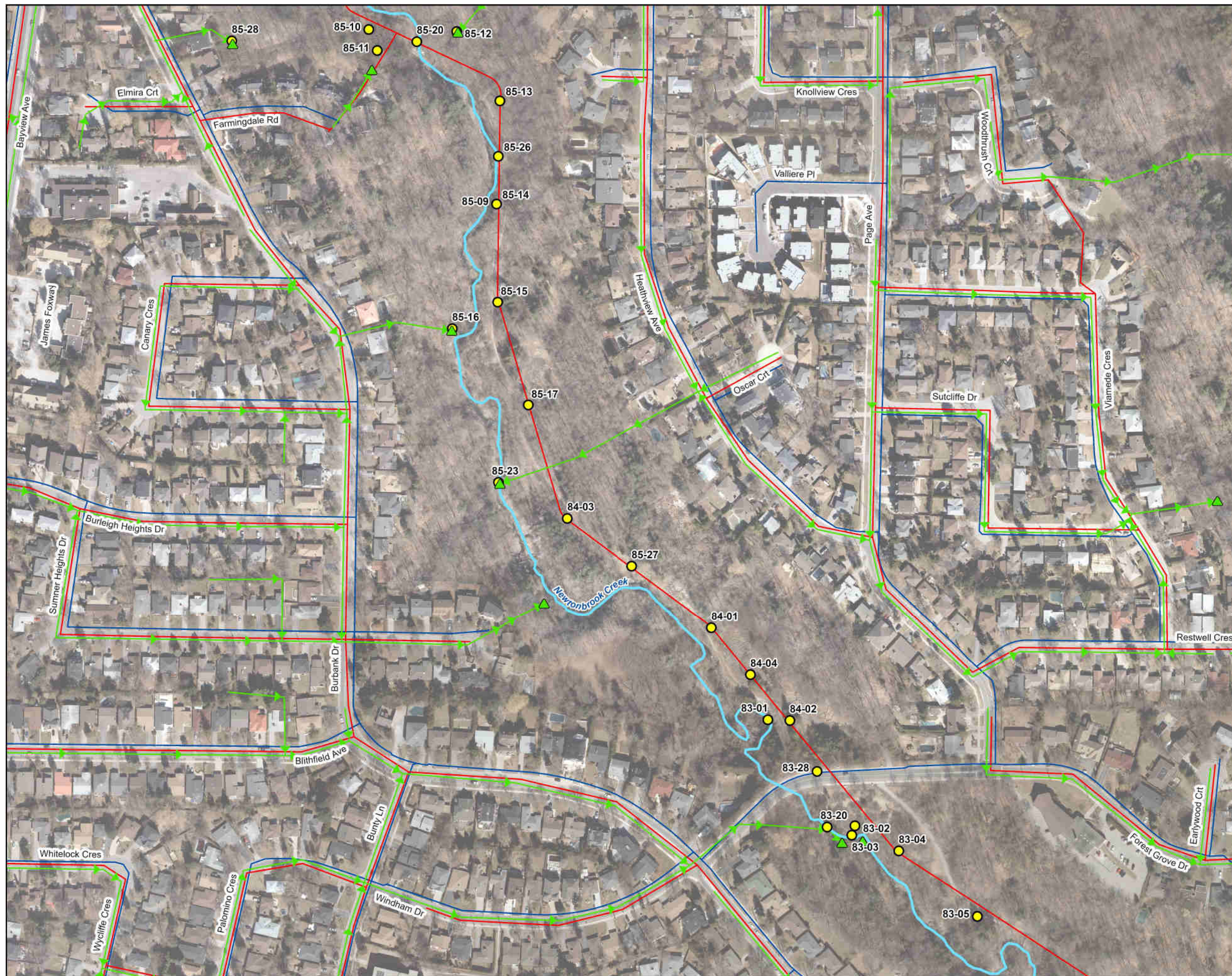
1:575,000

### Figure

Blue Ridge Creek and Newtonbrook Creek Water Erosion Risk Monitoring (Newtonbrook Creek (2))

Date: 2021-09-01  
Projection: NAD83\_UTM\_Zone\_17N  
Data Source: City of Toronto, TRCA  
Created by: A.V.

0 50 100  
Meters



### Legend

- Railway
- Watercourse
- Storm Sewer
- Storm Outfall
- Sanitary Sewer
- Watermain
- Water Erosion Risk Monitoring

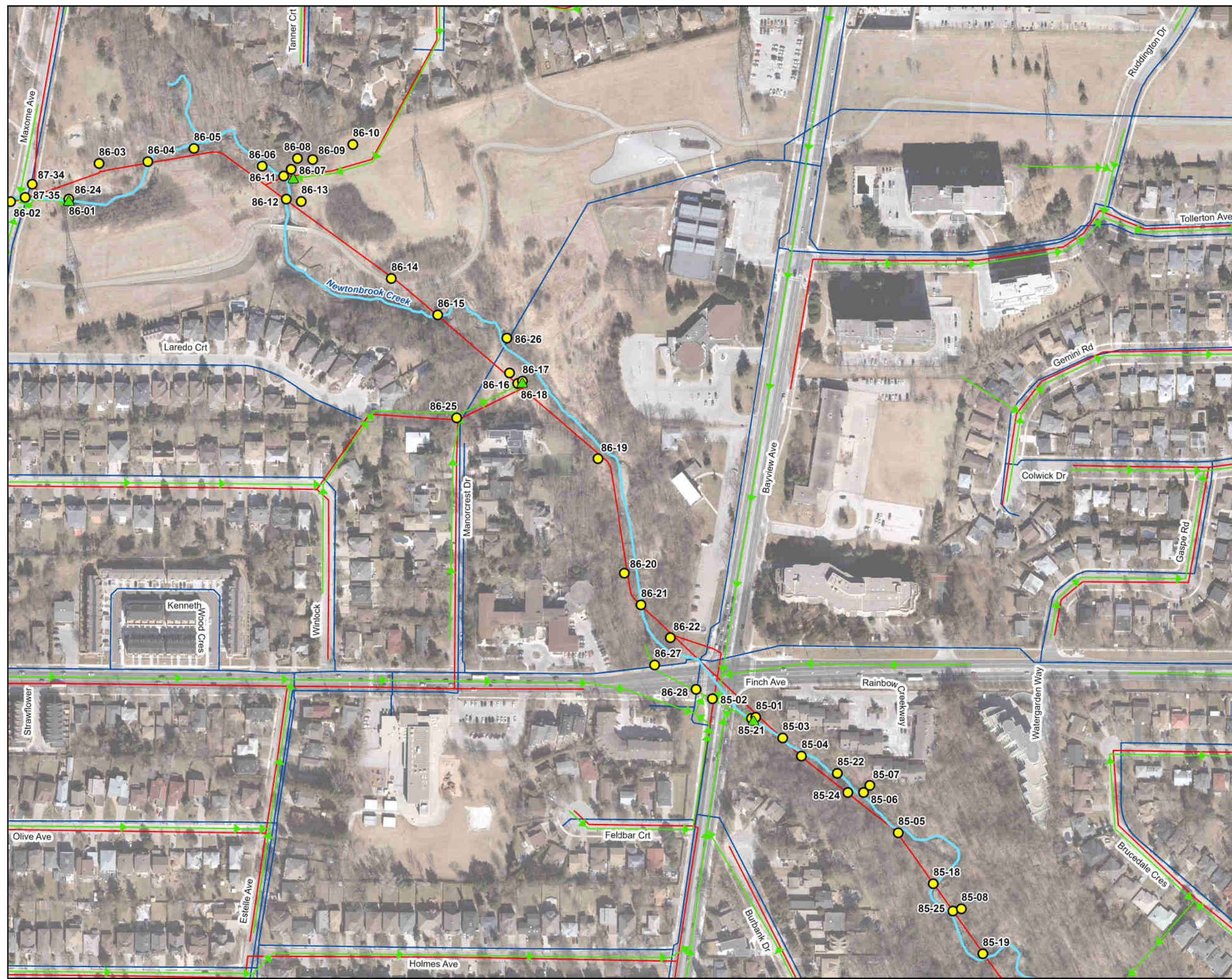
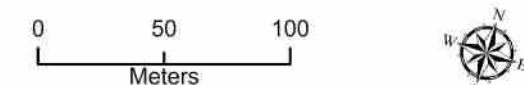
### KEY MAP



Figure

Blue Ridge Creek and Newtonbrook Creek Water Erosion Risk Monitoring (Newtonbrook Creek (3))

Date: 2021-09-01  
 Projection: NAD83\_UTM\_Zone\_17N  
 Data Source: City of Toronto, TRCA  
 Created by: A.V.



### Legend

- Railway
- Watercourse
- Storm Sewer
- Storm Outfall
- Sanitary Sewer
- Watermain
- Water Erosion Risk Monitoring

### KEY MAP

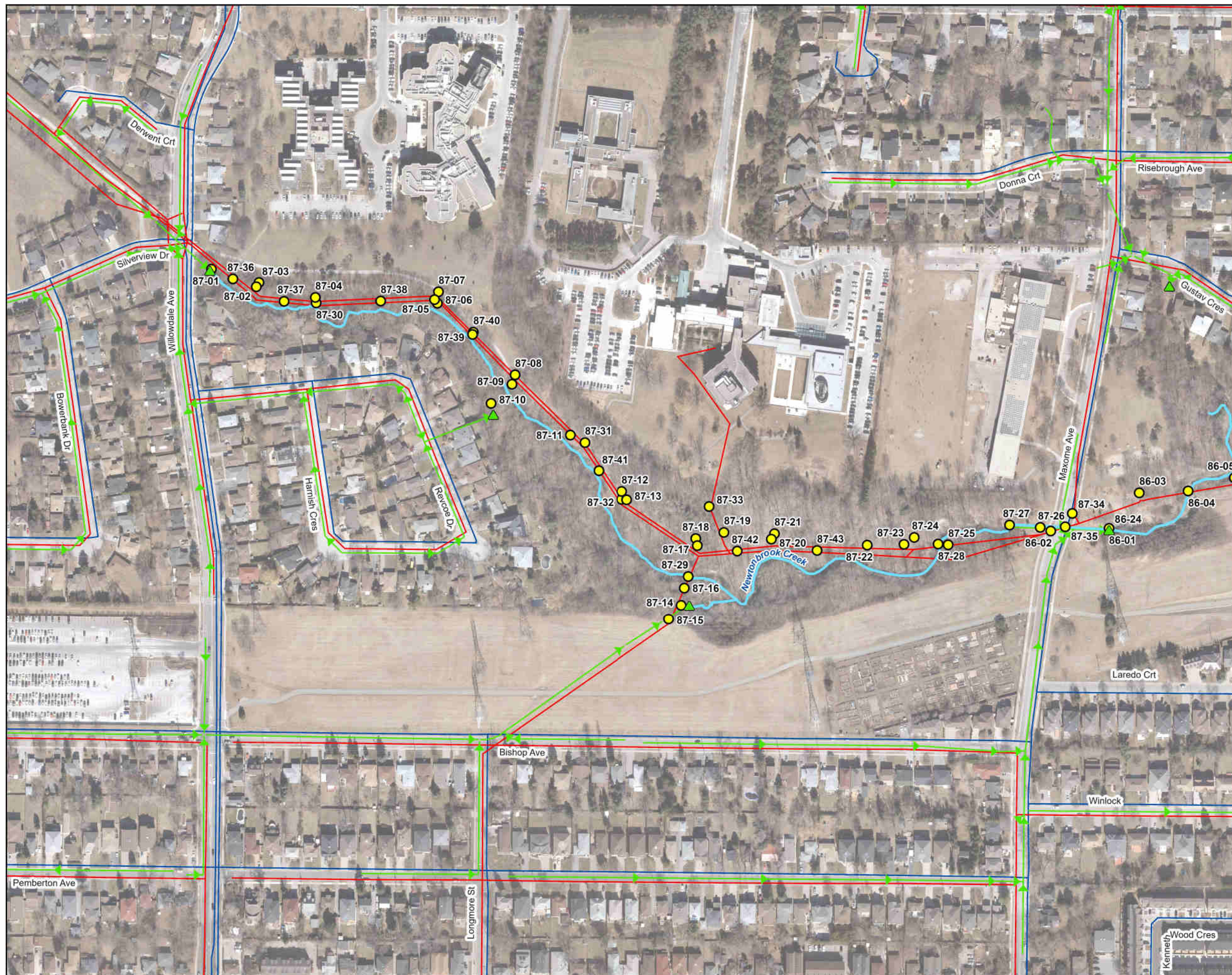
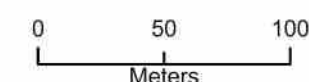


1:575,000

### Figure

Blue Ridge Creek and Newtonbrook Creek Water Erosion Risk Monitoring (Newtonbrook Creek (4))

Date: 2021-09-01  
 Projection: NAD83\_UTM\_Zone\_17N  
 Data Source: City of Toronto, TRCA  
 Created by: A.V.



### Legend

- Railway
- Watercourse
- Storm Sewer
- Storm Outfall
- Sanitary Sewer
- Watermain
- Water Erosion Risk Monitoring

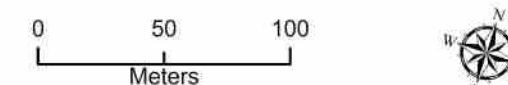
### KEY MAP

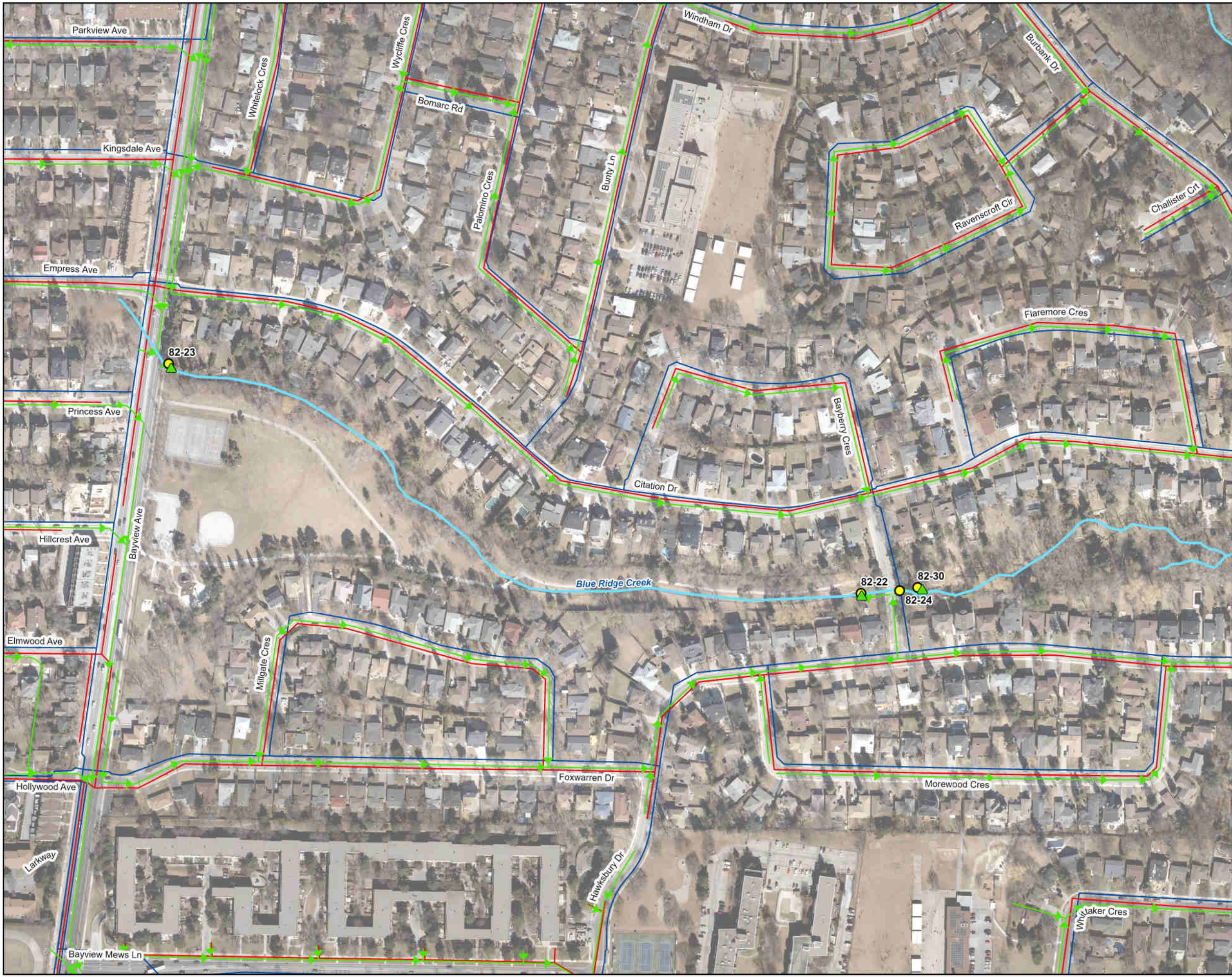


Figure

Blue Ridge Creek and Newtonbrook Creek Water Erosion Risk Monitoring (Blue Ridge Creek (1))

Date: 2021-09-01  
 Projection: NAD83\_UTM\_Zone\_17N  
 Data Source: City of Toronto, TRCA  
 Created by: A.V.





**Legend**

- Railway
- Watercourse
- Storm Sewer
- ▲ Storm Outfall
- Sanitary Sewer
- Watermain
- Water Erosion Risk Monitoring

**KEY MAP**



Figure

Blue Ridge Creek and Newtonbrook Creek Water Erosion Risk Monitoring (Blue Ridge Creek (2))

Date: 2021-09-01  
Projection: NAD83\_UTM\_Zone\_17N  
Data Source: City of Toronto, TRCA  
Created by: A.V.

