

**For Closed Captioning**, turn it on using the CC icon in the bottom left of your screen. Please also use the Chat feature to send a direct message to Jill MacLachlan (tech support) if you are having any issues



# TORONTO'S PARKLAND STRATEGY

Virtual Public Meeting  
July 15, 2025

# Welcome



Parks and Recreation  
Division

## Moderator



**Celina Chong**

Senior Public Consultation Coordinator,  
Public Engagement Unit



As a meeting participant, you agree to:

- Approach conversations with **curiosity** and a **willingness to learn** from others.
- Be an **active listener** and keep an **open mind** by valuing a diversity of views and opinions.
- Treat all participants with **kindness and respect**, recognizing that all voices are valuable.
- **Critique ideas**, not individuals.
- **Avoid language or behaviours** that could be considered rude, offensive, or discriminatory (e.g. cursing and derogatory terms).

To maintain a respectful and inclusive environment, offensive and discriminatory comments **are not permitted**. Participants engaging in such behaviour may be asked to leave.



The land that we are meeting on today is the traditional territory of many nations including the Mississaugas of the Credit, the Anishnabeg, the Chippewa, the Haudenosaunee, and the Wendat peoples and is now home to many diverse First Nations, Inuit, and Métis peoples.

We acknowledge that Toronto (Tkaronto) is covered by Treaty 13 signed with the Mississaugas of the Credit, and the Williams Treaties signed with multiple Mississaugas and Chippewa bands.

We acknowledge that we are all Treaty peoples, including those who came here as settlers – as migrants either in this generation or in generations past – and those of us who came here involuntarily, particularly those brought to these lands as a result of the Trans-Atlantic Slave Trade and Slavery. We pay tribute to those ancestors of African origin and descent.

# Webex orientation and how to participate



**All participants have been muted** for the presentation portion of this meeting.



**Use the Q&A feature to submit questions or click the hand icon** beside your name from the participants list on the right. (Questions will be answered throughout the presentation during designated discussion periods).



**For Closed Captioning**, turn it on using the CC icon in the bottom left of your screen. Please also use the Chat feature to send a direct message to Jill MacLachlan (tech support), so we can accommodate captioning during the breakout discussion session.



**A co-host will unmute you** during the discussion periods to share your input with your discussion group.



**Computer audio issues?** Use your phone for audio by calling and enter Join by phone by calling 1-416-915-6530 and enter the meeting number below. Press \*3 to ask a question. Press \*6 to mute/unmute.


Meeting number (access code):

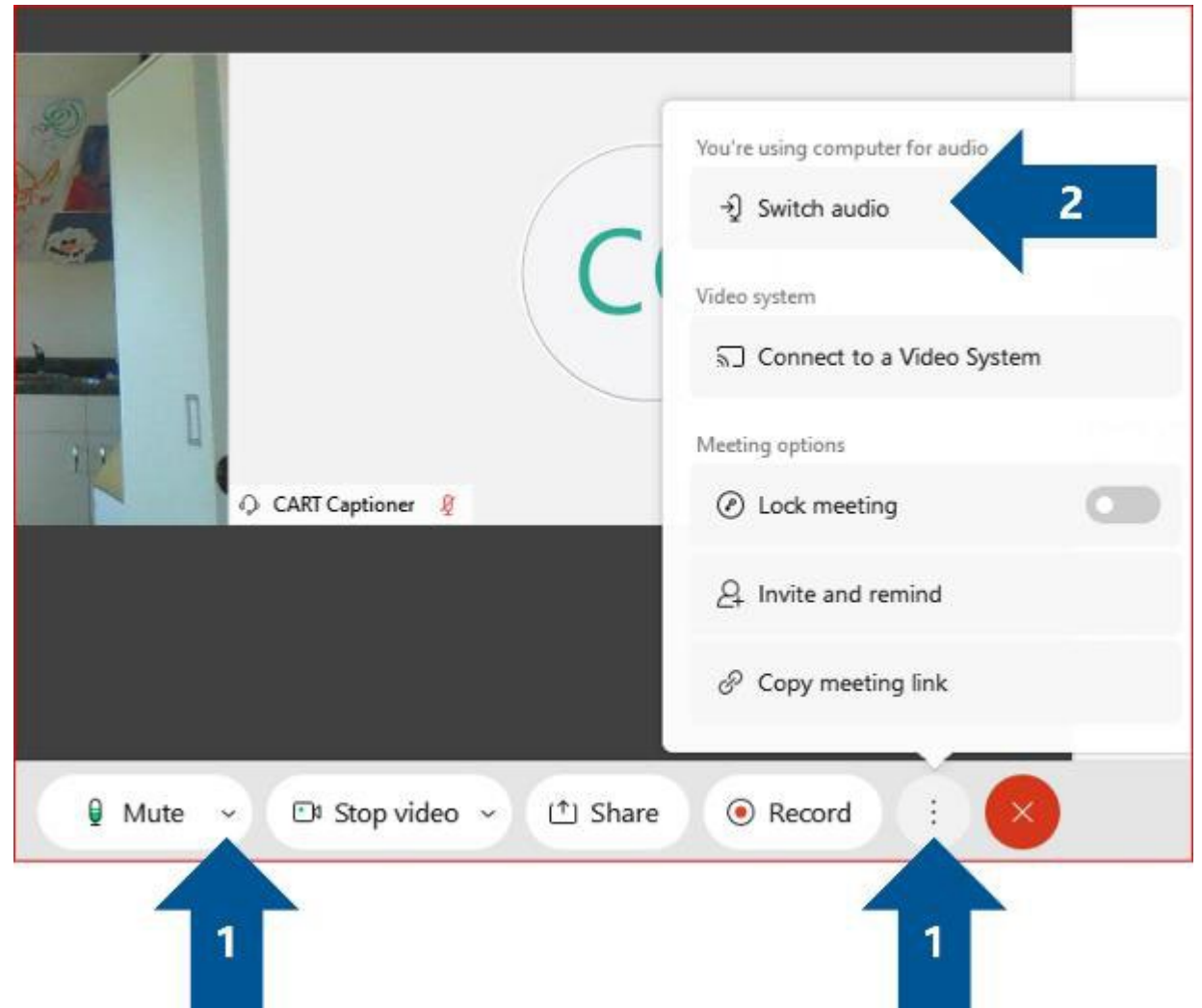
2337 698 4189

Meeting password:

WAeASMi9m57

# Webex audio trouble?

1. Click the **More Options** button at the bottom of the screen 
2. Click **Switch Audio**
3. Use the **Call me at** function
  - a) Enter your phone number
  - b) Webex will call your phone (no long-distance charges)



# Project team introductions

# Parkland Strategy team

## Presenter



**Parks &  
Recreation  
Division**



**Danielle DeMarsh**  
Sr. Project Manager



**Toni Papa**  
Planner (Mapping)



**Erica Beasley**  
Planner (Policy)

**Indigenous  
Engagement  
Consultants**



# Meeting objectives and agenda


# Meeting objectives

The **objectives** of this meeting are to:

1. Provide an **opportunity for the public to learn** about Toronto's Parkland Strategy.
2. Share **key themes we heard** through Phase 1 engagement.
3. Present **proposed changes to the Parkland Strategy** (based on feedback we heard).
4. Gather **public feedback** on the proposed changes presented.



# Meeting agenda

1. **Who's in the virtual room? And parks trivia (5 mins)**
2. **Overview of the Parkland Strategy (20 mins)**
3. **Questions of clarification (5 mins)** 
4. **What we heard in Phase 1 engagement (5 mins)**
5. **Proposed changes to the Parkland Strategy, group discussions 1 and 2, and report backs (60 mins)**
6. **Closing remarks (5 mins)**
7. **Adjourn by 8:30 pm**

Submit any clarifying questions through the Q&A feature on the right of the screen.

These will be addressed after the presentation.

Please save your suggestions and comments for **group discussion**.

# Who's in the virtual room? And parks trivia

# Who is in the virtual room? + parkland trivia!


## Answer the Slido to tell us:


1. Your name
2. The organization you represent (if applicable)
3. What topic you're interested in discussing today





**Next, let's play some quick parks trivia (also in Slido)!**


# Interests mentioned by this group during signup


-  **Nature, Ecology & Biodiversity**
  - Support for native plants, conifers, and pollinator habitats
  - Interest in foraging rights & traditional harvesting
  - Concerns about invasive species and over-mowing


-  **Maintenance & Beautification**
  - Improved upkeep, litter control, and infrastructure repair
  - Clear standards and timelines for addressing deficiencies


-  **Waterfront & Beaches**
  - Request for a dedicated waterfront/beach strategy
  - Concerns about access, safety, and bylaw enforcement gaps

-  **Equity & Accessibility**
  - Accessibility challenges in High Park and other major parks
  - Need for inclusive, barrier-free design for all

-  **Active Use & Connectivity**
  - More cycling infrastructure and trail integration
  - Expansion of passive parklands

-  **Year-Round Activation**
  - Open washrooms, fountains, saunas for winter use
  - Support for cold-weather activities (e.g., swimming)

-  **Wildlife & Environmental Protection**
  - Impact of off-leash dogs on wildlife
  - Desire to minimize human impacts on natural areas

-  **Partnerships & Community Use**
  - Strengthen school-park collaborations
  - Transparent process for proposing community projects

-  **Culture & Creativity**
  - More spaces for arts and cultural programming

# Toronto's parkland system

# Toronto is a “city within a park”



**~13% of Toronto's  
total land area is  
parkland (8,000+ ha)\***

Toronto is a green city!

**We have over 1,500+ parks owned or operated by the City of Toronto.**

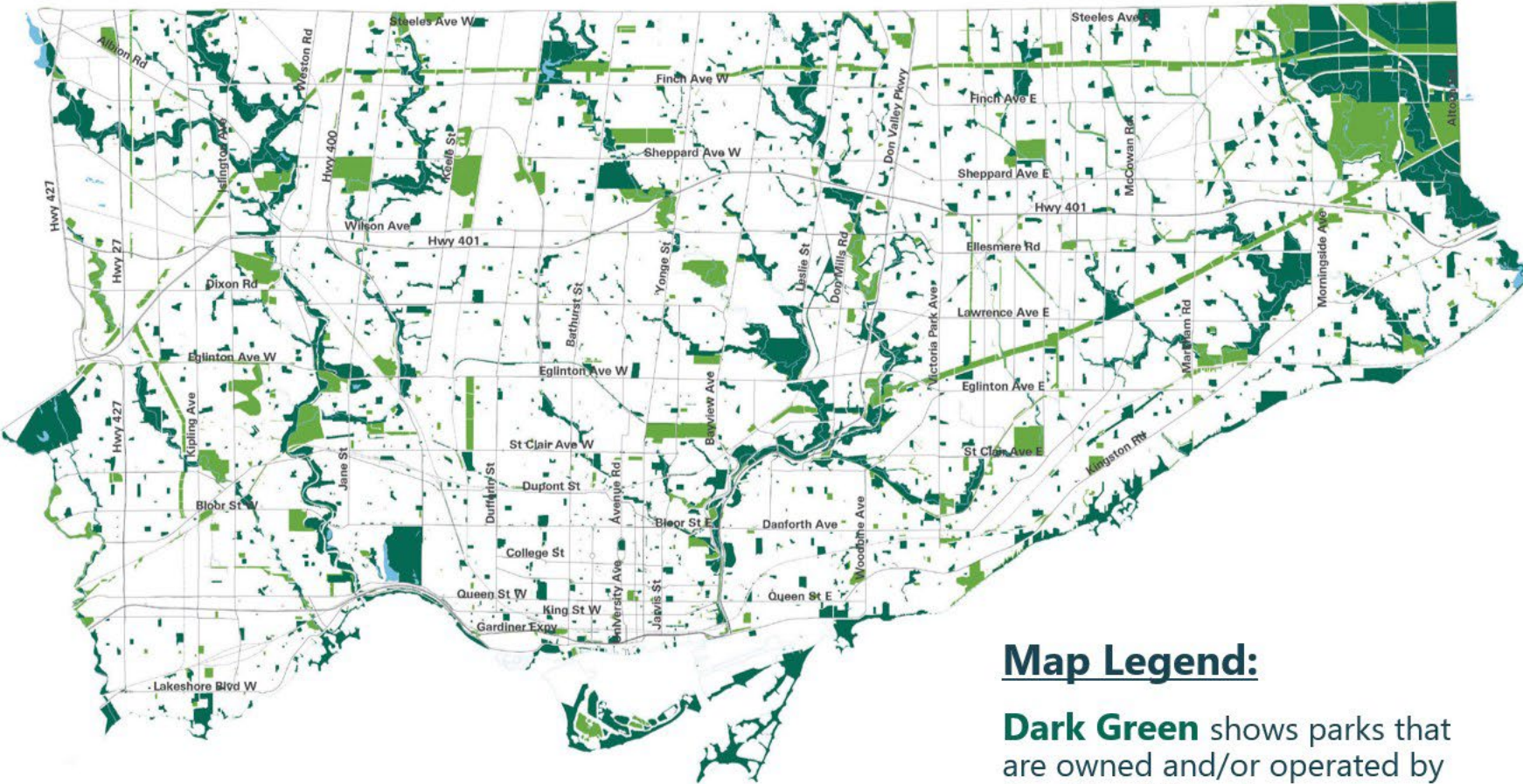
**Other green and open spaces complement and support the park system and help connect parks** (e.g. hydro corridors, school yards, cemeteries, and POPS-Privately Owned Publicly Accessible Spaces, etc.).

\*Includes Rouge National Urban Park, which is being transferred from the City to the Federal Government

# Parks are located across Toronto, but are not evenly distributed

Parks are located all across Toronto.

However, there are **gaps in the parkland system**, and some areas of the city have more parks than others.



## Map Legend:

**Dark Green** shows parks that are owned and/or operated by the City of Toronto.

**Light Green** shows other open spaces including federally and provincially owned and operated parks and open spaces, hydro corridors, and cemeteries.



# Toronto's parks have a diversity of shapes, sizes, and functions



Morningside Park



Ethennonhawahstihnen' Park



Colonel Samuel Smith Park



Berczy Park

**No two parks are the same.**

Some have **natural areas**, while others are focused on outdoor **play, exercise, and gathering**.

Some are **large enough to accommodate buildings for indoor recreation** (e.g. community centres).

**Large parks are increasingly difficult to create** due to the high cost of purchasing land, especially in central and downtown areas.

# Parks play many important roles



**Parks are vital to the quality of life that residents experience in Toronto.**

The physical and mental health benefits of visiting parks is estimated at ~**\$32 million/year**.



**Parks provide green infrastructure that supports the quality of Toronto's urban environment and helps to protect built assets from flooding.**

Parks provide an estimated **\$6.6 billion/year** in stormwater services.



**Parks help make our city resilient to climate change and contribute to carbon sequestration and storage.**

The tree canopy in parks reduces urban heat island, and beaches and ravines offer places for residents to cool down on hot days.

# How does the City create new parks and improve existing parks?

# Toronto's main way to create / improve parks is through contributions from new development

**Contribution is parkland on (or near) the development site**



**OR**

**Contribution is through a payment instead of land. This payment is used to purchase land for new parks, or improve existing parks**



# What is the Parkland Strategy?

# The City is reviewing two strategies related to facilities and parks

## Parks & Recreation Facilities Plan



Long-term plan to build and renew recreation facilities.

## Parkland Strategy



Long-term plan for the creation of new parks and park improvements.

# Parkland Strategy overview

- It was adopted by City Council in **2019**
  - City Council directed staff to review it after 5 years (review initiated in 2024)
- It's a **city-wide planning framework** to guide investment in parks
- It uses a **data-driven approach** to map parkland provision levels and determine 'Parkland Priority Areas'
- It includes **multiple mapping layers** to analyse Toronto's parks system



# The Toronto Parkland Strategy is guided by four principles



## EXPAND

the parks system by creating new parks to **support growth and address gaps** to ensure an effective parks system that will support the needs of a livable, diverse city.



## IMPROVE

the function of existing parks to promote **community cohesion, ecological sustainability, and health and wellbeing** through active living, access to nature, and the provision of spaces for rest, relaxation, and leisure.



## CONNECT

parks and other open spaces, physically and visually, and leverage opportunities to use other open spaces so that people, communities and wildlife have abundant access to parks and open spaces and can **seamlessly navigate to and through the parks and open space system.**



## INCLUDE

everyone by removing barriers so that parks and other open spaces are **inclusive and inviting places that are equitably accessible** for people of all ages, cultures, genders, abilities, and incomes.

# Considerations for a high-quality park

The Parkland Strategy identifies **key considerations for creating a high-quality park.**

## PROMINENCE & VISIBILITY



Parks need to be **prominent, and visible features** of the public realm, to support **safety, security, accessibility, and livability.**

## IDENTITY & CHARACTER



Parks need to take advantage of **character-defining elements** that contribute to creating a **sense of place.**

## USER EXPERIENCE



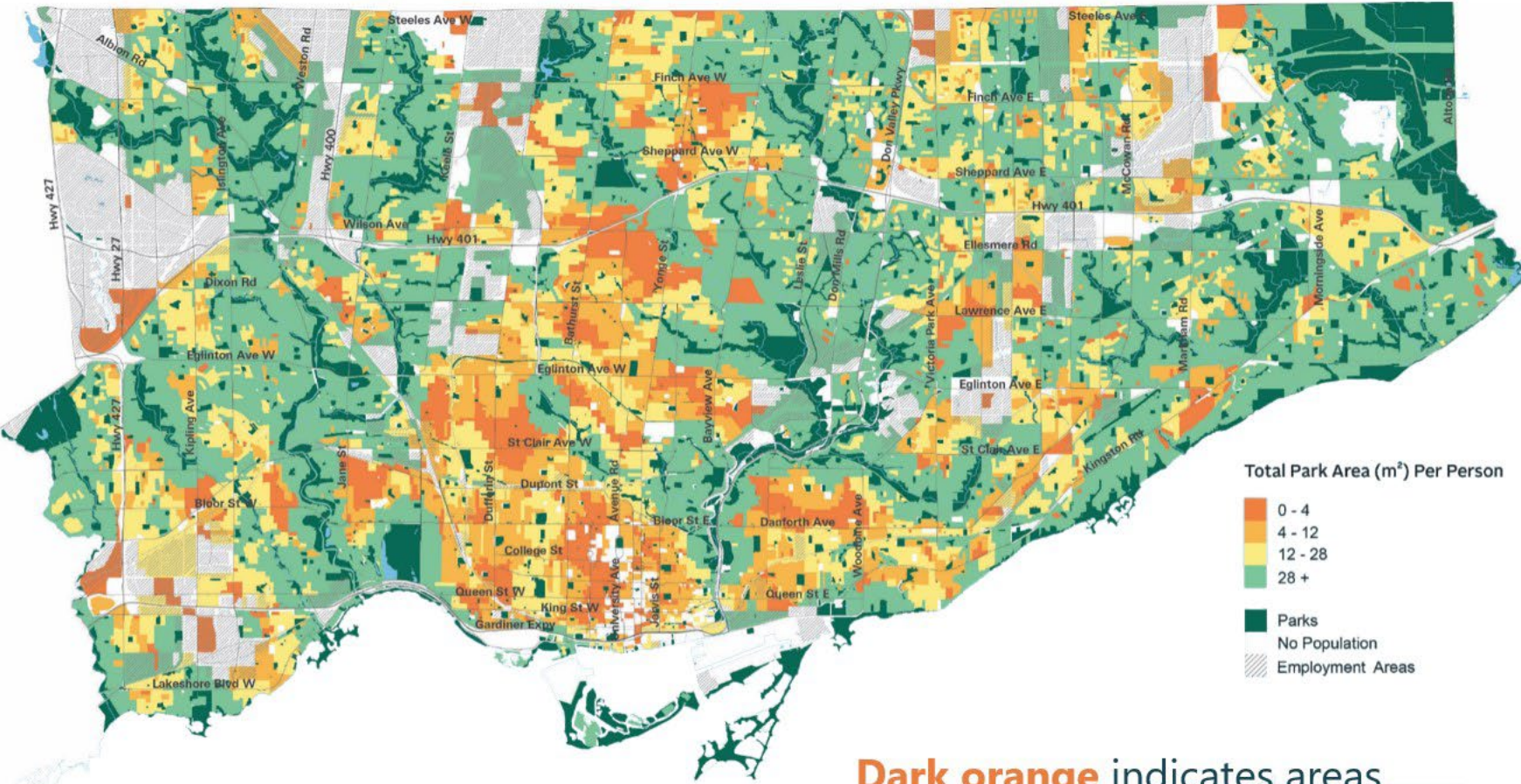
Parks need to attract a **wide range of users,** and entice people to stay by providing a **wide range of activities,** by **supporting vegetation,** and by providing **inclusive spaces.**

## PHYSICAL CHARACTERISTICS & THERMAL COMFORT



Parks need to be **safe and secure,** support a range of **passive and active** programming, enable **year-round activities,** and be accessible **for people of all ages and abilities.**

# Mapping parkland provision rates across Toronto



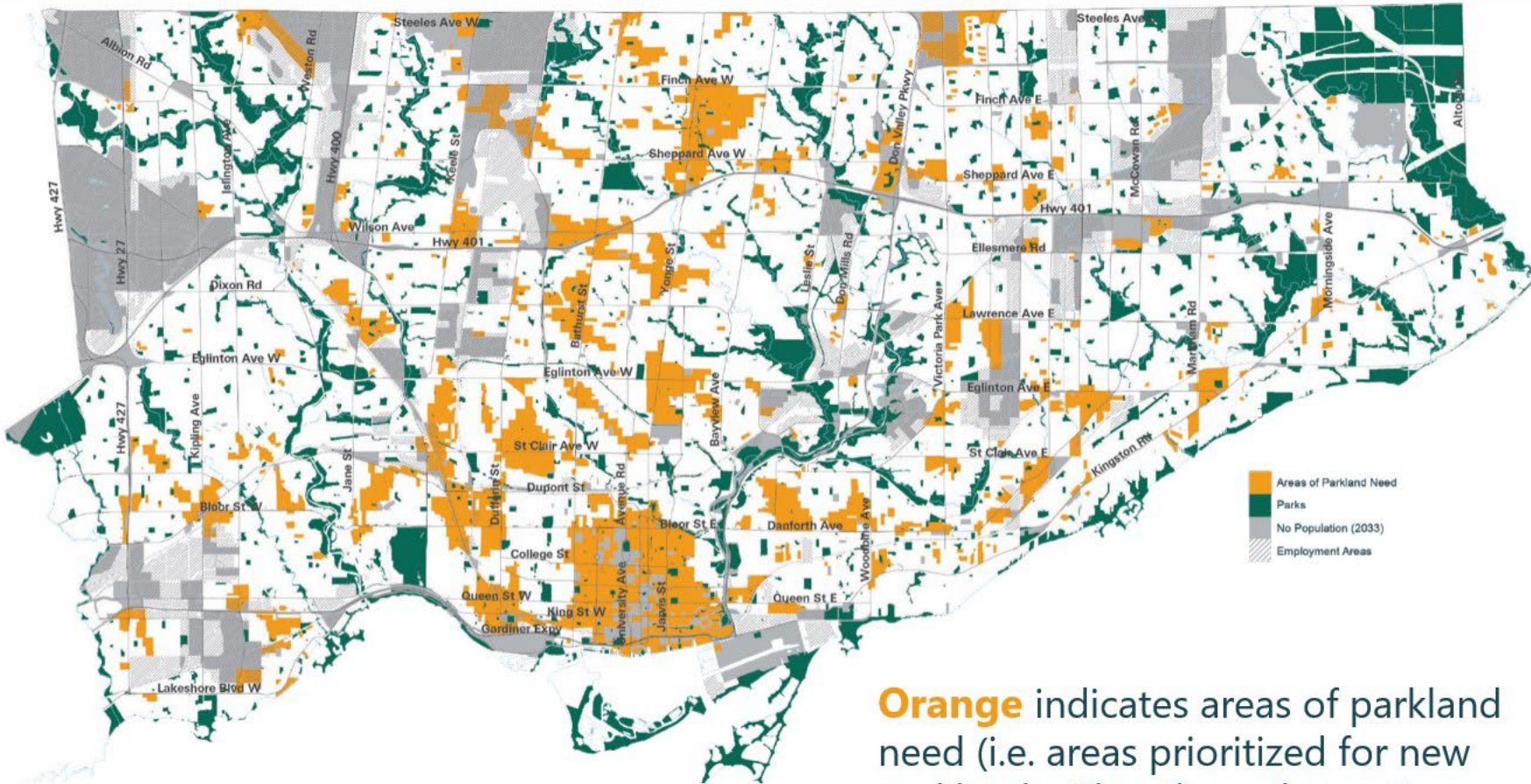
**Dark orange** indicates areas with the lowest parkland provision rates, measured per person.

Parkland provision is measured on a per person basis. **The average rate for Toronto residents is 28 m<sup>2</sup> of parkland per person.**

**The rates vary across Toronto.** Some areas have 0 m<sup>2</sup> while others have over 100 m<sup>2</sup> per person.

**Areas with higher population densities tend to have lower rates,** while areas close to ravines tend to have higher rates.

# Parkland Priority Areas



**Orange** indicates areas of parkland need (i.e. areas prioritized for new parkland, either through on-site developer dedications or strategic acquisitions).

- The various Parkland Strategy **mapping layers culminate** in a single map identifying **Parkland Priority Areas** (see map on left)
- These are areas of Toronto that get prioritized for:
  - a) parkland studies** (analysis of parkland in a neighbourhood)
  - b) parkland acquisitions** (purchase of new parkland)
  - c) parkland conveyance** (from new development)
  - d) park improvements** (upgrades in existing parks)
- The City considers **multiple factors** to calculate whether a particular area of Toronto is a Parkland Priority Area.
- We are **proposing to update which factors are used** in this calculation – we'll get into the details in the second part of today's presentation

# How is the Parkland Strategy implemented?

## Development Review

When City staff review applications for new development, they use the Parkland Strategy to **evaluate if the developer should contribute land or cash for parks.**



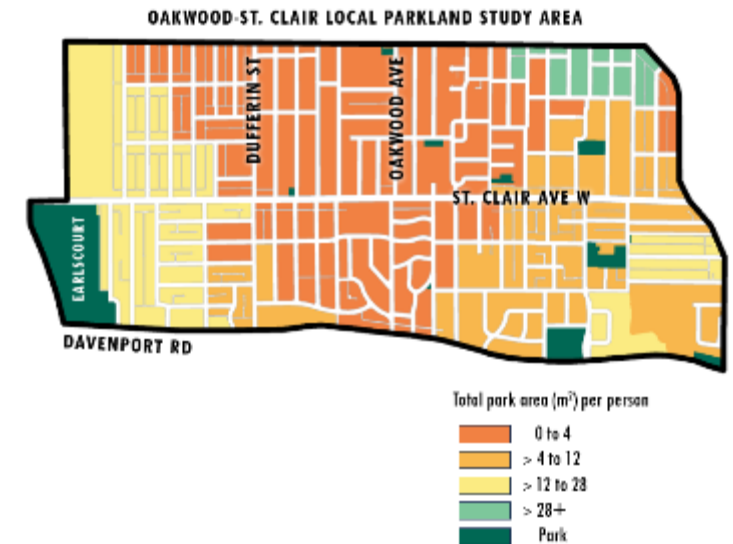
## Parkland Acquisition

City staff **evaluate whether to purchase land to create new parks** based on acquisition criteria in the Parkland Strategy.

PRIMARY ASSESSMENT CRITERIA			
<b>EXPAND + INCLUDE</b>	Is the site in a parkland priority area?	<input checked="" type="checkbox"/>	<input type="checkbox"/>
<b>IMPROVE</b>	Is the site suitable for parkland purposes (e.g. size, shape, and utility)?	<input checked="" type="checkbox"/>	<input type="checkbox"/>
<b>CONNECT</b>	Does the site improve connectivity to other parks and open spaces?	<input checked="" type="checkbox"/>	<input type="checkbox"/>
		If all criteria are answered YES, Proceed to Secondary Assessment Criteria	If any criteria are answered NO, Do Not Acquire
SECONDARY ASSESSMENT CRITERIA			
<b>EXPAND</b>	Does this address a park range gap in the area?	<input checked="" type="checkbox"/>	<input type="checkbox"/>
	Is the site located within an area with a high number of employees, students, or tourists?	<input checked="" type="checkbox"/>	<input type="checkbox"/>
<b>IMPROVE</b>	Is the value of the acquisition reasonable relative to the number of people who would benefit?	<input checked="" type="checkbox"/>	<input type="checkbox"/>
	Can the site accommodate an FMP facility?	<input checked="" type="checkbox"/>	<input type="checkbox"/>
<b>CONNECT</b>	Is the site within 500 m of transit access?	<input checked="" type="checkbox"/>	<input type="checkbox"/>
	Is the site located in an area with a high percentage of low income residents?	<input checked="" type="checkbox"/>	<input type="checkbox"/>
<b>INCLUDE</b>	Does the site have cultural significance?	<input checked="" type="checkbox"/>	<input type="checkbox"/>
		If a majority of criteria are answered YES, Recommend for Acquisition	If a majority of criteria are answered NO, Do Not Acquire

## Local Area Planning

When the City develops an area plan (e.g. Secondary Plan, or Local Parks Plan), the Parkland Strategy helps inform **analysis and recommendations for the area.**



Orange indicates Parkland Priority Areas from the Parkland Strategy

# Why are we reviewing and updating the Parkland Strategy?

# The city has evolved



Updating the Parkland Strategy is a chance to:

- **Update data and mapping** based on the latest Statistics Canada data (**2021 census**) and population growth estimates based on City data for **residential development applications**.
- Reassess in response to **Provincial legislation changes** that have reduced the amount of parkland contributions that the City can require from developers.
- Align park planning with **recently adopted City priorities** (e.g. Indigenous Reconciliation Action Plan and NetZero Strategy).

New park on Wellington Ave, and construction site on King St

# Questions of clarification on the Parkland Strategy

Use the Q&A feature to ask questions or click the hand icon to raise your hand. A facilitator will unmute you to ask your question of clarification.

Please hold your suggestions, feedback, and ideas for the group discussions that will follow.

# Process to gather feedback and update the Parkland Strategy

# Engagement by the numbers

These numbers represent joint engagement on both the Parkland Strategy and the Parks and Recreation Facilities Plan.

**4** online public meetings

**1** Equity-Deserving Advisory Group meeting

Several visits to City advisory bodies including Seniors' Forum, Lived Experience Advisory Group, and P&R Community Disability Advisory Committee



**12+** community-led do-it-yourself engagements with an equity focus

**1** online survey with **8,800+** interactions

**25** pop-ups across the city (1 in each ward)

with **3,000+** interactions



## Engagement with Indigenous communities:

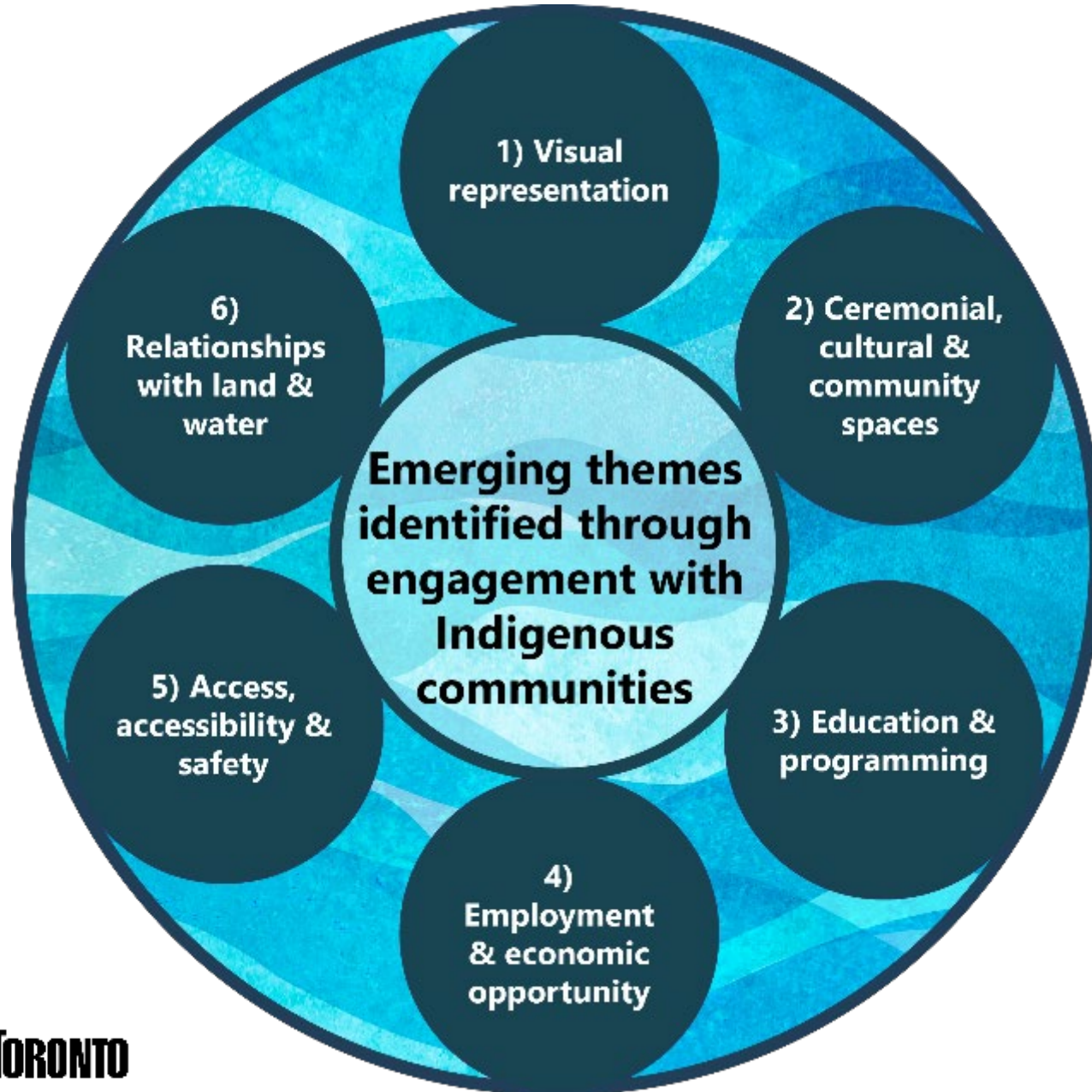
**3** meetings with the Indigenous Advisory Circle

**5** pop-ups in Indigenous community spaces

**2** interviews and **1** tour with Indigenous organizations

**96** respondents identified as Indigenous in the online survey

# Incorporating in Indigenous reconciliation into the Parkland Strategy



Details regarding Reconciliation and Indigenous Placekeeping in parks are still being developed in consultation with Indigenous communities.

# What we heard in Phase 1 engagement

# Context for what we heard

- We received a TON of community feedback – these slides are a high-level overview (not a comprehensive summary of all feedback)
- This feedback came from participants across engagement formats
- Some of the feedback received is out of scope for the Parkland Strategy review, but is being passed along to the appropriate Parks & Recreation teams to address
- Detailed “What We Heard” reports can be found online: [www.toronto.ca/ParksandFacilitiesPlans](http://www.toronto.ca/ParksandFacilitiesPlans)



# What we heard – key survey response trends

## Which areas of Toronto do you think should be prioritized for new parks?\*

1. Areas that don't have a park within walking distance
2. Areas where more people living in high-rise buildings
3. Areas with few existing parks

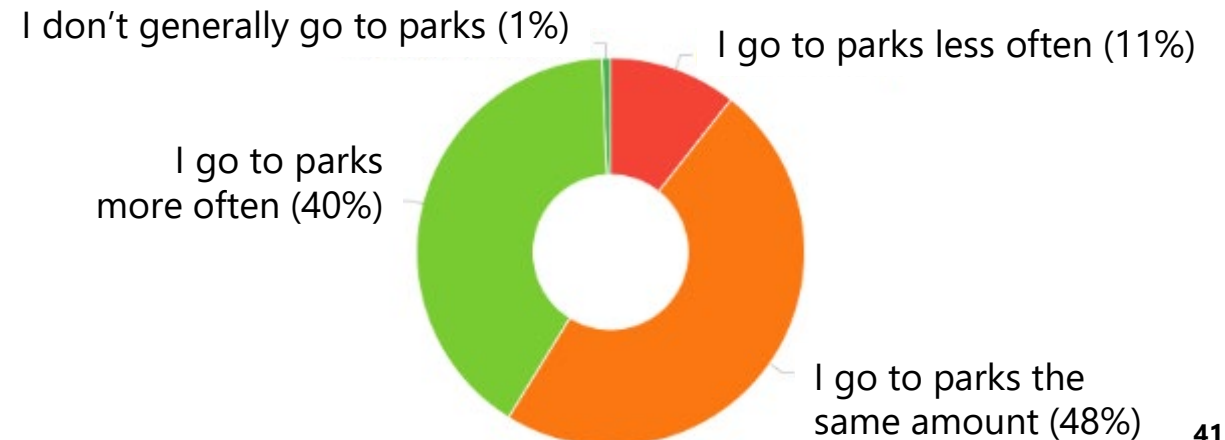
## Which park improvements do you think the City should prioritize?\*

1. More comfort facilities
2. Protection for existing natural areas
3. Create more natural areas

## What type of park do you think the City should prioritize for new investment?\*

1. Community parks (medium sized parks with a range of amenities)
2. Local parks (small parks with daily-use amenities)
3. Naturalized parks (ravines, woodlands, wetlands)

## Compared to your use of parks before the start of COVID-19, how would you describe your use of parks over the past year?



# What we heard – overall themes

## Access:

- Parks that remain free and open
- New parks needed in high-rise communities
- Reduce park walkability gaps (areas with no park within a 5-to10-minute walk)
- Focus investment in Indigenous, Black, and equity-deserving neighbourhoods
- Improved transit access and parking
- Clear signage when land is a park

## Inclusivity:

- Culturally relevant programming (reflecting the local community)
- Free and affordable programming
- Multilingual signage/wayfinding
- Public art / murals that are culturally relevant
- Respect for the existing character of parks during upgrade processes

## Accessibility:

- Accessible park entrances and paths
- Year-round access to clean accessible, washrooms
- Winter snow clearing
- Shaded seating and rest areas
- Accessible / inclusive playgrounds
- Disability-informed and senior-friendly park design

## Safety & Security:

- Improved lighting
- Improved maintenance (including waste removal)
- On-leash dog signage/enforcement
- Off-leash dog areas
- Work to address encampments (with other City Divisions)
- Reduced police presence alongside increased supportive staff trained in culturally safe enforcement
- Improved safety for pedestrians / cyclists (e.g. separate paths)

# What we heard – overall themes (continued)

## Community uses and anchors:

- Wellness amenities (e.g. outdoor fitness equipment)
- Recurring events (markets and pop-ups)
- Special events (cultural, music, and arts festivals)
- Evening and weekend programming
- Food vendors
- Music and performance spaces
- Wi-Fi and charging areas
- Spaces for youth and seniors
- Food security initiatives (e.g. community gardens)
- Outdoor gatherings (e.g. yoga, healing circles, cultural ceremonies, intergenerational learning)
- Flexible outdoor spaces to accommodate pop-up health, newcomer, or cultural outreach
- Parks co-located with public services (e.g. libraries, childcare)
- Community gathering spaces, including spaces to share a meal



# Proposed changes to the Parkland Strategy

**Think of a time when you felt joyful, peaceful,  
or a sense of belonging in a park.**

**What features of the park made that  
experience enjoyable for you?**

# Proposed change A) what makes a high-quality park?

**During the Parkland Strategy Phase 1 engagement, participants were asked to reflect on their favourite park and the elements that make it their favourite park. This information is helping us describe in the Parkland Strategy what values and experiences make for a high-quality park.**

**Some of the elements under consideration include:**

- a. Features that support sport and wellbeing (e.g., outdoor fitness equipment)
- b. Washrooms
- c. Features for dogs, and to separate dogs from other park users
- d. Variation in terrain and landscapes
- e. Unique elements that create a sense of place
- f. Visually interesting, including art and design
- g. Intergenerational design to be enjoyable for a wide range of ages
- h. Features for gathering and social interactions (e.g., chess tables, ping pong tables, amphitheaters)
- i. Interesting views of nature and/or the city
- j. Winter maintenance and programming
- k. Celebration of diverse cultures and heritages
- l. Rest and comfort features (e.g., seating, shelter from the rain/sun, drinking fountains)
- m. Relaxing and quiet spaces
- n. Close to home and easy to access
- o. Well maintained, including garbage and graffiti removal
- p. Recognition of Indigenous heritage and stewardship
- q. Presence of gardens (e.g., for flowers, food, pollinators)
- r. Natural elements, including mature trees and streams
- s. Prominent and highly visible from the street
- t. Accessible and inclusive design for all abilities

# Proposed change B) new guiding principle – “Protect”

## Current Guiding Principles:

### EXPAND

the parks system by creating new parks to **support growth and address gaps** to ensure an effective parks system that will support the needs of a livable, diverse city.

### IMPROVE

the function of existing parks to promote **community cohesion, ecological sustainability, and health and wellbeing** through active living, access to nature, and the provision of spaces for rest, relaxation, and leisure.

### CONNECT

parks and other open spaces, physically and visually, and leverage opportunities to use other open spaces so that people, communities and wildlife have abundant access to parks and open spaces and can **seamlessly navigate to and through the parks and open space system.**

### INCLUDE

everyone by removing barriers so that parks and other open spaces are **inclusive and inviting places that are equitably accessible** for people of all ages, cultures, genders, abilities, and incomes.

## Key feedback through engagement:

**General engagement:** Some participants indicated that “Protect” is missing as a Guiding Principle, and that not all land should be modified/enhanced as typical parkland – some land should remain in its natural state.

**Indigenous engagement:** the Principle of “Include” implies bringing individuals/communities (including Indigenous community members) into the existing colonial parks system, as opposed to seeing and doing things differently.

## Proposing to add “Protect” as an additional Guiding Principle to reflect:

- Protecting parkland from **conversion to other uses**, ensuring that parks remain as parks
- Protecting **the natural environment**, including landscapes, wildlife, and ecosystems
- Protecting **cultural and heritage spaces**, especially those with **Indigenous significance**

# Proposed change C) Parkland Acquisitions Assessment Tool (PAAT)

## Current PAA Tool

### PRIMARY ASSESSMENT CRITERIA

<b>EXPAND + INCLUDE</b>	Is the site in a parkland priority area?
<b>IMPROVE</b>	Is the site suitable for parkland purposes (e.g. size, shape, and utility)?
<b>CONNECT</b>	Does the site improve connectivity to other parks and open spaces?

### SECONDARY ASSESSMENT CRITERIA

<b>EXPAND</b>	Does this address a park range gap in the area?
	Is the site located within an area with a high number of employees, students, or tourists?
	Is the value of the acquisition reasonable relative to the number of people who would benefit?
<b>IMPROVE</b>	Can the site accommodate an FMP facility?
<b>CONNECT</b>	Is the site within 500 m of transit access?
<b>INCLUDE</b>	Is the site located in an area with a high percentage of low income residents?
	Does the site have cultural significance?

## Proposed Changes

- The current PAA tool is quite rigid, and doesn't have flexibility to respond to emerging opportunities/priorities
  - For example, it requires land acquisitions to be in Parkland Priority Areas (which means they must be maximum 500 m walking distance from residential areas), thus framing the notion of "parkland" only in relation to how parks serve people
- We are proposing to broaden the list of considerations to:
  - Account for **more City priorities and unique opportunities** that arise, including parkland acquisitions to **enhance waterfront access**, advance **Indigenous reconciliation projects**, and **reduce urban heat island**
  - Expand the notion of "parkland" to address the important role parkland also serves for **planet, environment, and wildlife**



## First group discussion period

- A. Do you agree with the features of a high-quality park that were listed on a previous slide? Is there anything missing?**
- B. Do you support adding “Protect” as an additional Guiding Principle in the Parkland Strategy?** (adding to Expand, Improve, Connect, Include)
- C. For the revised Parkland Acquisitions Assessment Tool, which considerations are important to you when the City is acquiring new parkland?**



# Proposed change D) what land gets counted as “parkland”

## Proposed Change: Include federal/provincial parkland

Rouge National Urban Park, Trillium Park, and Downsview Park\*

**We are proposing to include parkland that is owned by the Provincial and Federal governments in the calculation** of parkland provision rates across the city. Including these parks in our counting results in higher parkland provision rates for areas within 500 metres of these parks.

## Proposed Change: Include hydro corridor lands that function as parkland

E.g. The Meadoway

The City of Toronto has agreements with hydro utility providers that permit some land in hydro corridors to be used for park purposes, while continuing their primary function as a location for hydro transmission towers. An example of this is the Meadoway in Scarborough, which is a linear greenspace that includes walking trails, benches, and native flowers.

**We are proposing to include hydro lands that have park uses in the calculation** of parkland provision rates. Including these lands results in higher parkland provision rates for areas within 500 metres of the included portions of hydro corridors.

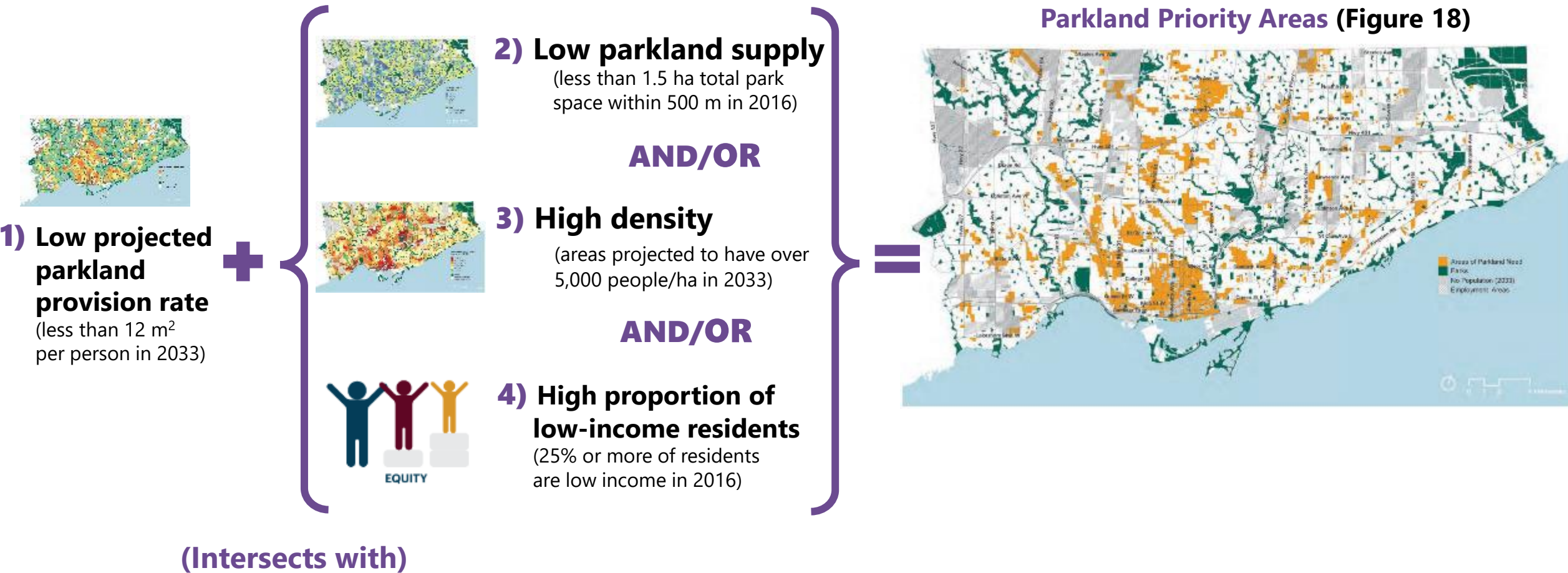
Rouge National Urban Park



The Meadoway



# Parkland Priority Areas – current calculation method



The next three slides present proposed updates to the factors that get considered for mapping Parkland Priority Areas

# Proposed change E) – Factor #1

## Factor #1: Projected provision of parkland that's generally used by people

Over half of Toronto's parkland is located within ravines and some of these lands are not generally accessible to people (e.g., due to steep slopes and/or dense vegetation).

To emphasize areas of the park system that are currently accessible to and used by people, **we are proposing to exclude those portions of Toronto's natural areas that are generally inaccessible to the public.** This provides a more realistic measurement of parkland that a person can access.

The parkland provision rates will be based on future population estimates, using City data of residential development applications.

Accessible parkland at Trinity Bellwoods



Inaccessible parkland at Cedar Ridge Park



# Proposed change E) – Factor #2

## Factor #2: Access to private yards

**The second proposed factor to determine Parkland Priority Areas is areas of Toronto where residents are less likely to have access to their own private yard.**

People living in multi-unit dwellings are less likely to have access to private green space (e.g., a back yard) and may be more likely to depend on parks as spaces for leisure and social gathering. We are proposing to prioritize those areas of Toronto with higher numbers of dwellings that are apartments. This can be done using Statistics Canada data that identifies the location of apartment/multi-unit dwellings (from duplexes up to high rise buildings).

**Note:** This factor uses the following dwelling types data from the 2021 Census.

- Apartment in a flat or duplex
- Apartment in a building that has fewer than five storeys
- Apartment in a building that has five or more storeys



A tall multi-unit residential building



A residential neighbourhood containing single family homes with access to private yards

# Proposed change E) – Factor #3

## Factor #3: Equitable parkland access for Indigenous, Black, and equity-deserving communities

When determining the location of Parkland Priority Areas, “low-income” is currently the only factor considered that relates to equity.

**We are proposing to change this by adding other socio-demographic factors (refer to chart on the right), recognizing that Indigenous, Black, and equity-deserving groups face significant barriers** to equal access, opportunities, and resources due to discrimination and the distinct and unique experiences Indigenous and Black peoples have faced due to the legacies of colonization and enslavement.

Socio-demographic variable from 2021 Census	Description
<b>Low income</b> (double weighted)	% of the population that are living with low income according to the Census Family Low Income Measure, After Tax.
<b>Dependency ratio</b>	Ratio of youth (ages 0 to 19) + seniors (ages 65 or older) per 100 working-age people (ages 20 to 64).
<b>Racialized – Black</b>	% of the population that are Black.
<b>Racialized – non-Black</b>	% of the population that are not White, Indigenous, or Black.
<b>Indigenous identity</b>	% of the population that identify as Indigenous to Canada.
<b>Newcomer status</b>	% of the population that immigrated to Canada in the past five years (2016 to 2021).
<b>No knowledge of official languages</b>	% of the population that cannot conduct a conversation in English or French.

### **Methodology Notes:**

- Census data for people who are 2SLGBTQ+ and people living with disabilities are not available at small enough geographies to help identify specific focus areas through mapping and are therefore not included as criteria in this index. Women are not included because there is low geographic variation with this variable. These groups will continue to be considered as equity-deserving groups and be factored into parks planning in other ways.
- In the P&R socio-demographic equity index, the low-income category is double weighted (25%), while all other variables are equally weighted at 12.5%

**D. Do you support the proposed changes to what is counted as parkland in the Parkland Strategy?**

**E. Do you support the three factors that are proposed to determine Parkland Priority Areas:**

- **Factor #1 - Projected provision of parkland that's generally used by people**
- **Factor #2 - Access to private yards**
- **Factor #3 - Equitable parkland access for Indigenous, Black, and equity-deserving communities**

# Closing remarks

# High-level timeline



# Next steps and upcoming community engagement

## **Now to Fall:** Phase 2 community engagements:

- Online survey (available online July 22, in 8 languages)
- Visiting existing City Advisory Bodies (*Senior's Forum; Lived Experience Advisory Group; P&R Community Disability Steering Committee*)
- Equity-Deserving Advisory Group meetings
- DIY Engagement Kits for community Groups
- **Winter 2025:** Summary of What We Heard through Phase 2 engagements posted on the project webpage
- **Spring 2026:** New Parkland Strategy to City Council for approval



Visit (and share) the project webpage to learn more and sign up for e-updates:

[Toronto.ca/ParksAndFacilitiesPlans](https://toronto.ca/ParksAndFacilitiesPlans)

# Thank You!

**Celina Chong**

**Senior Public Consultation Coordinator**

**[Celina.Chong@toronto.ca](mailto:Celina.Chong@toronto.ca)**

**Danielle DeMarsh**

**Senior Project Manager, Parkland Strategy**

**[Danielle.DeMarsh@toronto.ca](mailto:Danielle.DeMarsh@toronto.ca)**

**Let us know how we did by filling out the survey, or email us if you have any questions, comments, or concerns!**

