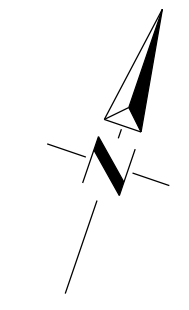
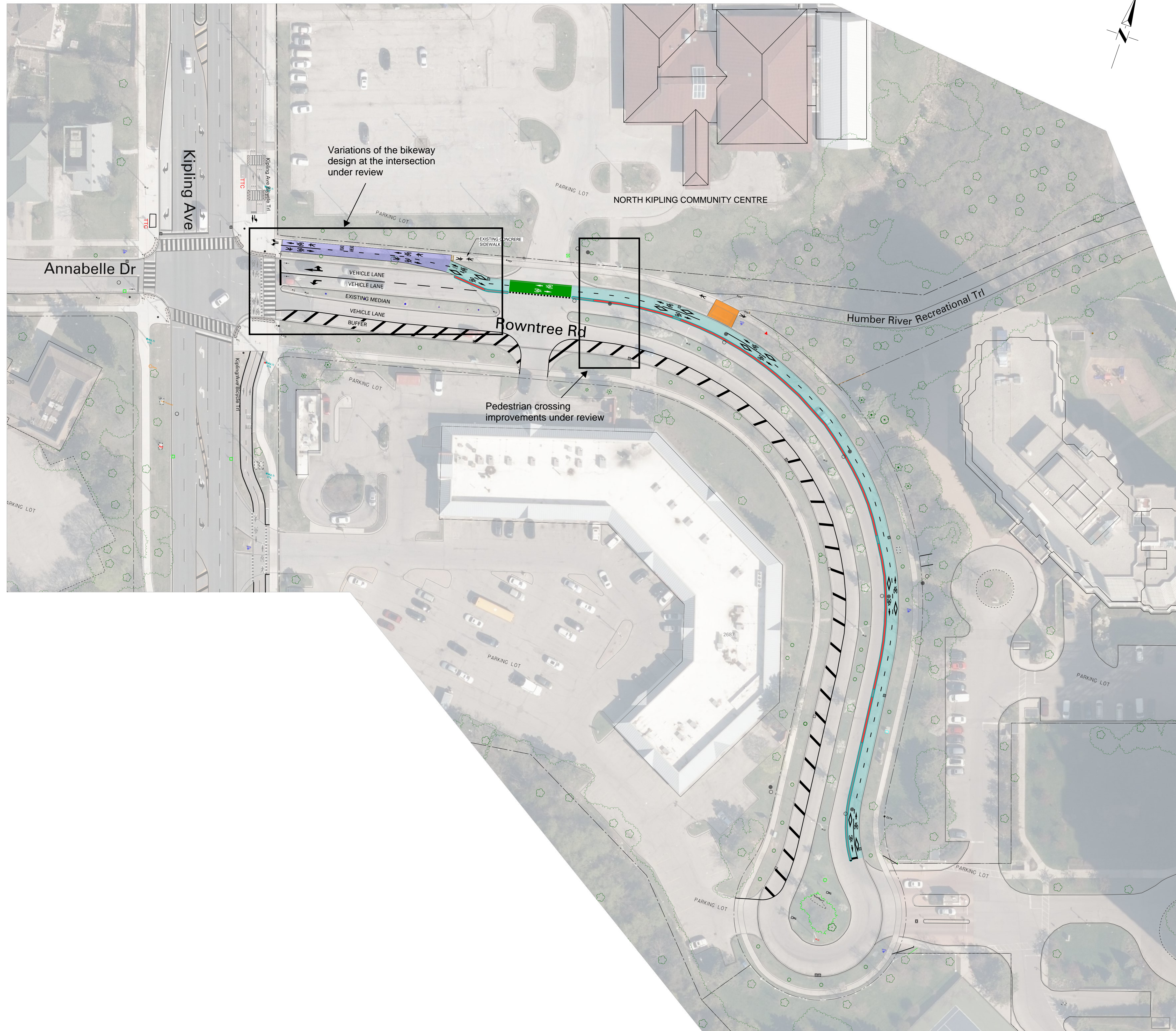
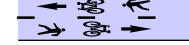
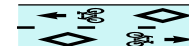






OPTION 1



LEGEND

-  IN-BOULEVARD MULTI-USE TRAIL
-  ON-STREET TWO-WAY BIKEWAY
-  TRAIL ENTRANCE
-  GREEN PAVEMENT MARKINGS ACROSS DRIVEWAY
-  RAISED POURED-IN -PLACE CONCRETE BARRIER
-  FLUSH (STREET LEVEL) CONCRETE BARRIER

NOTE:

1. THIS ROLL PLAN IS A DRAFT FOR PUBLIC CONSULTATION. IT IS SUBJECT TO CHANGES BASED ON FEEDBACK FROM PUBLIC CONSULTATION AND ONGOING DESIGN
2. INFORMATION ON THIS PLAN IS BASED ON OFFICE RECORDS AND IS SUBJECT TO FIELD VERIFICATION.
3. PROPOSED MATERIALS ARE DEPICTED IN BLACK AND THE COLOURS SHOWN IN THE LEGEND ; EXISTING MATERIALS ARE DEPICTED IN GREY.



ROWNTREE RD (OPTION 1) KIPLING AVE TO CUL DE SAC PUBLIC CONSULTATION ROLL PLAN

SCALE : 1:500	DRAWN BY : P.L.	REQUESTED BY : Q.N. K.W.	
DATE DRAWN : 03/30/2026	DRAWING NO. : T1056 PC100-01		
FILE PATH : K:\trc\trp\pc100\TUBE\12025			