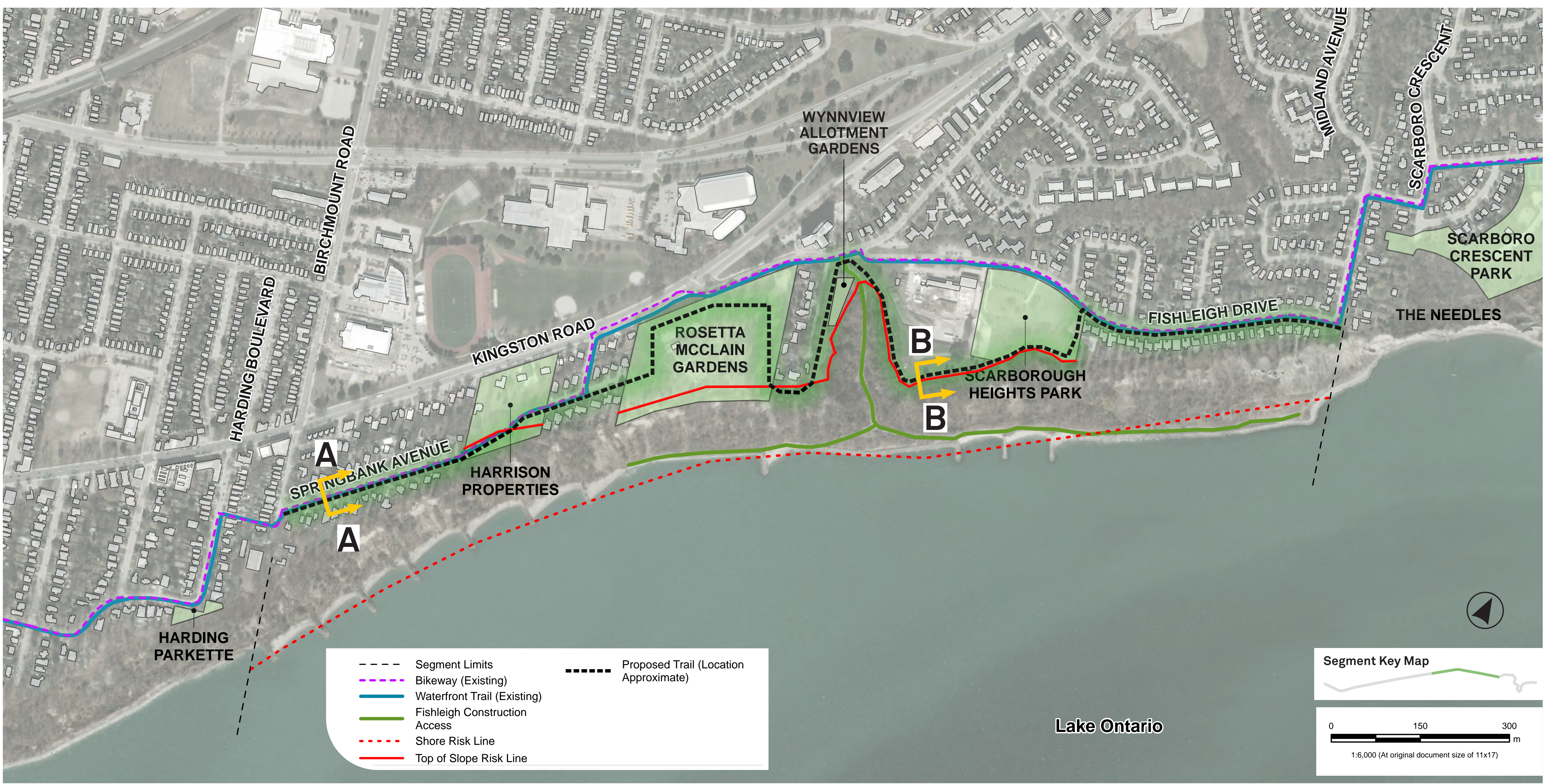


SEGMENT 3: BIRCHMOUNT RD TO FISHLEIGH ACCESS @ MIDLAND AVE



Key Considerations

- Details below show the expected footprint of the Tableland Trail. Other designs may be considered
- Tableland trail would sit within City Right of Way ownership and follow the City's Multi-Use Trail Guidelines and On-Street Bikeway Design Guidelines
- Does not provide a shoreline experience
- No formal access to water
- Capitalizes on key lookout and view opportunities

Please leave a sticky note if you have comments on the Alternatives drafted for Segment 3. Did we miss anything?

SEGMENT 3: ALTERNATIVE 5 TABLELAND TRAIL



*This alternative requires removal of on-street parking and approx. 2.5 m of widening to accommodate bike lanes and a sidewalk.