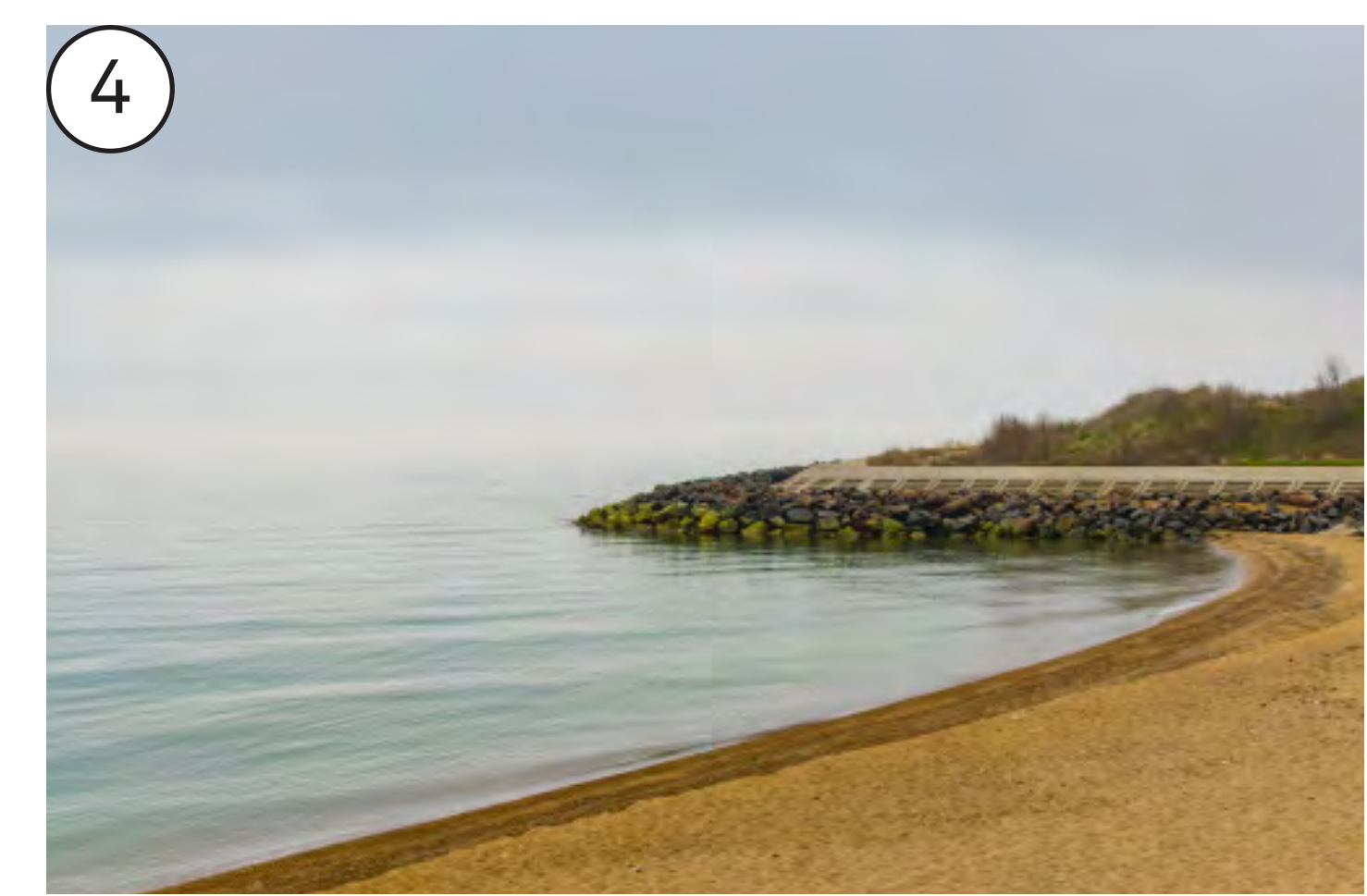
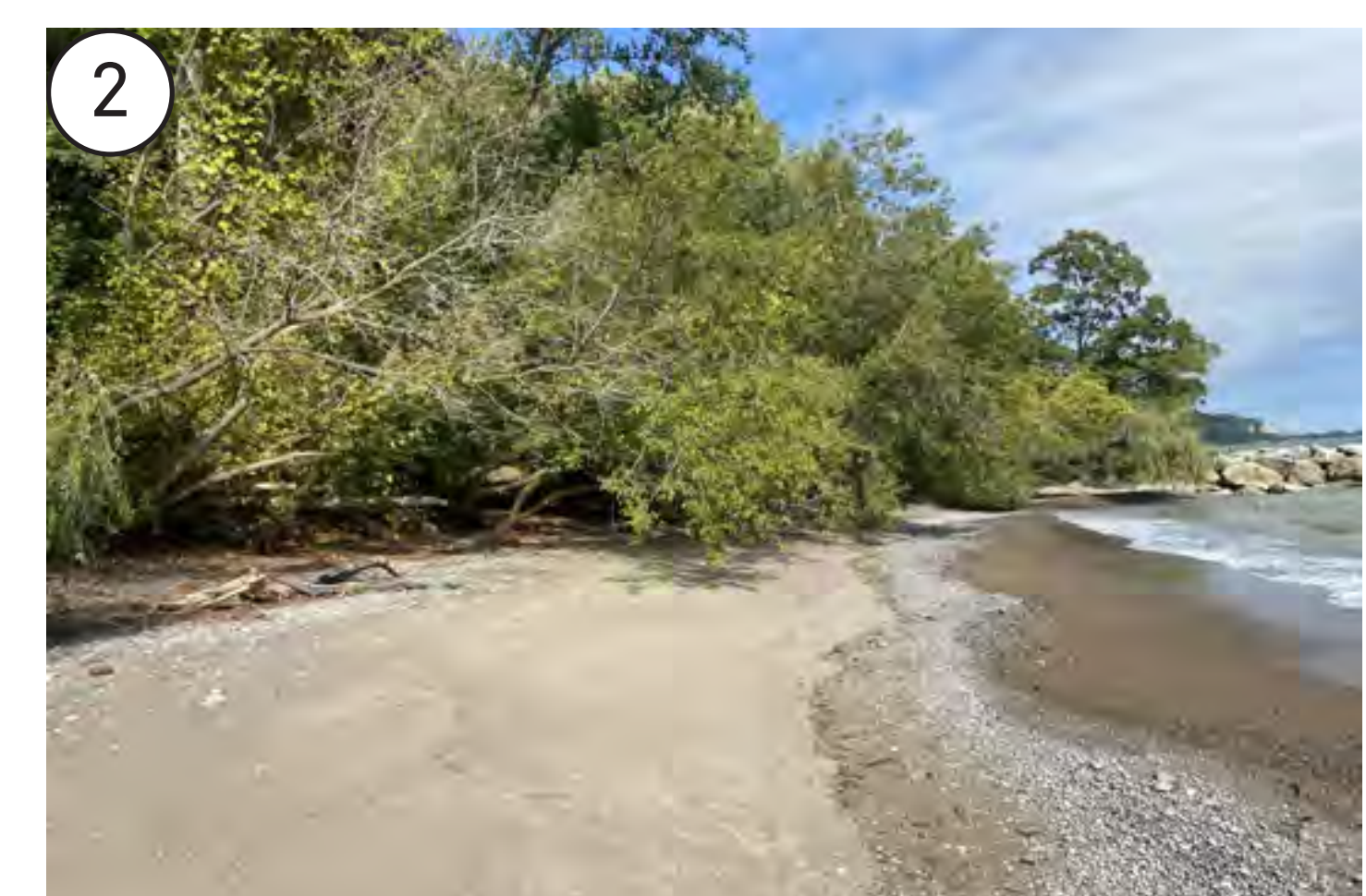


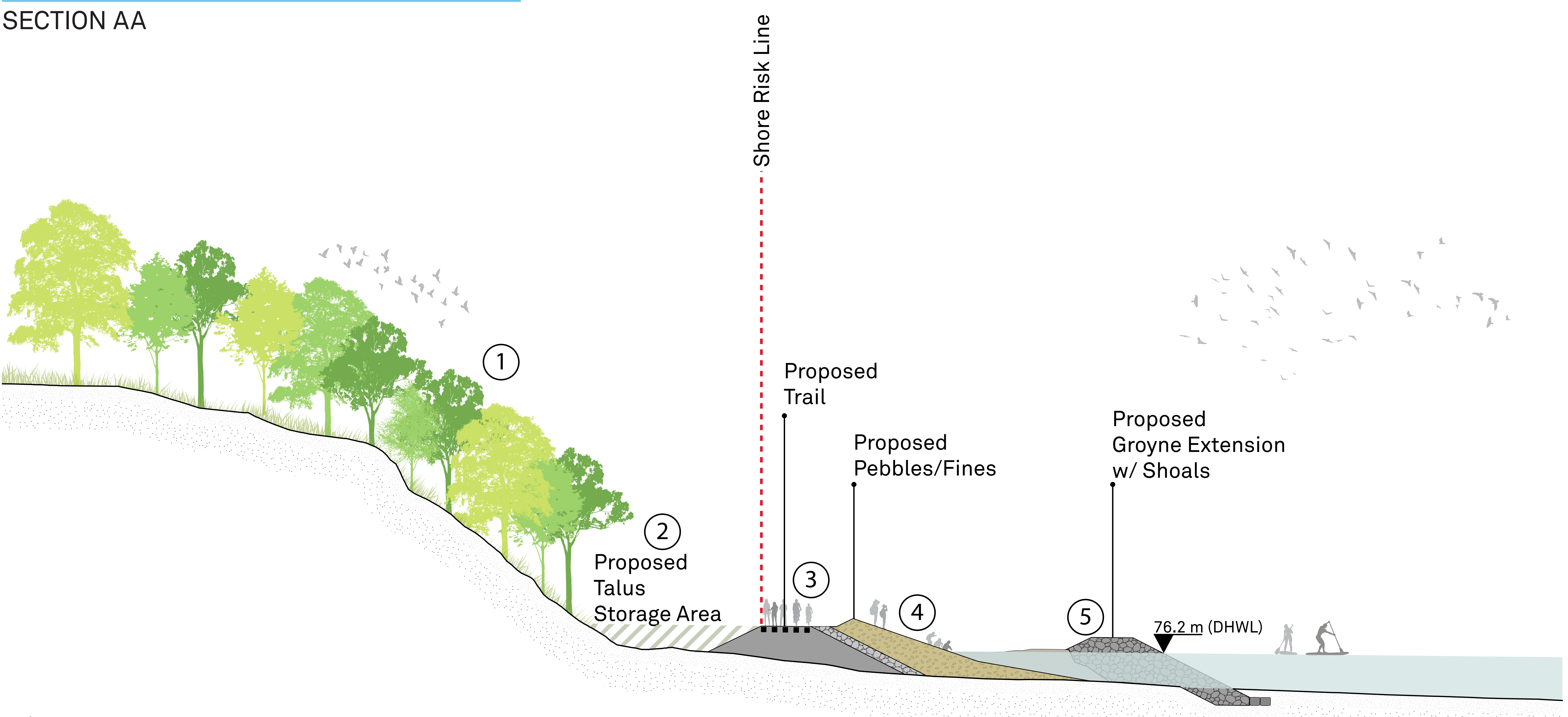
# SEGMENT 1B: RC HARRIS WTP TO WARDEN AVE



- Key Considerations**
- Provides accessible trail along shore
  - Allows access to water
  - Character of existing shoreline will be altered

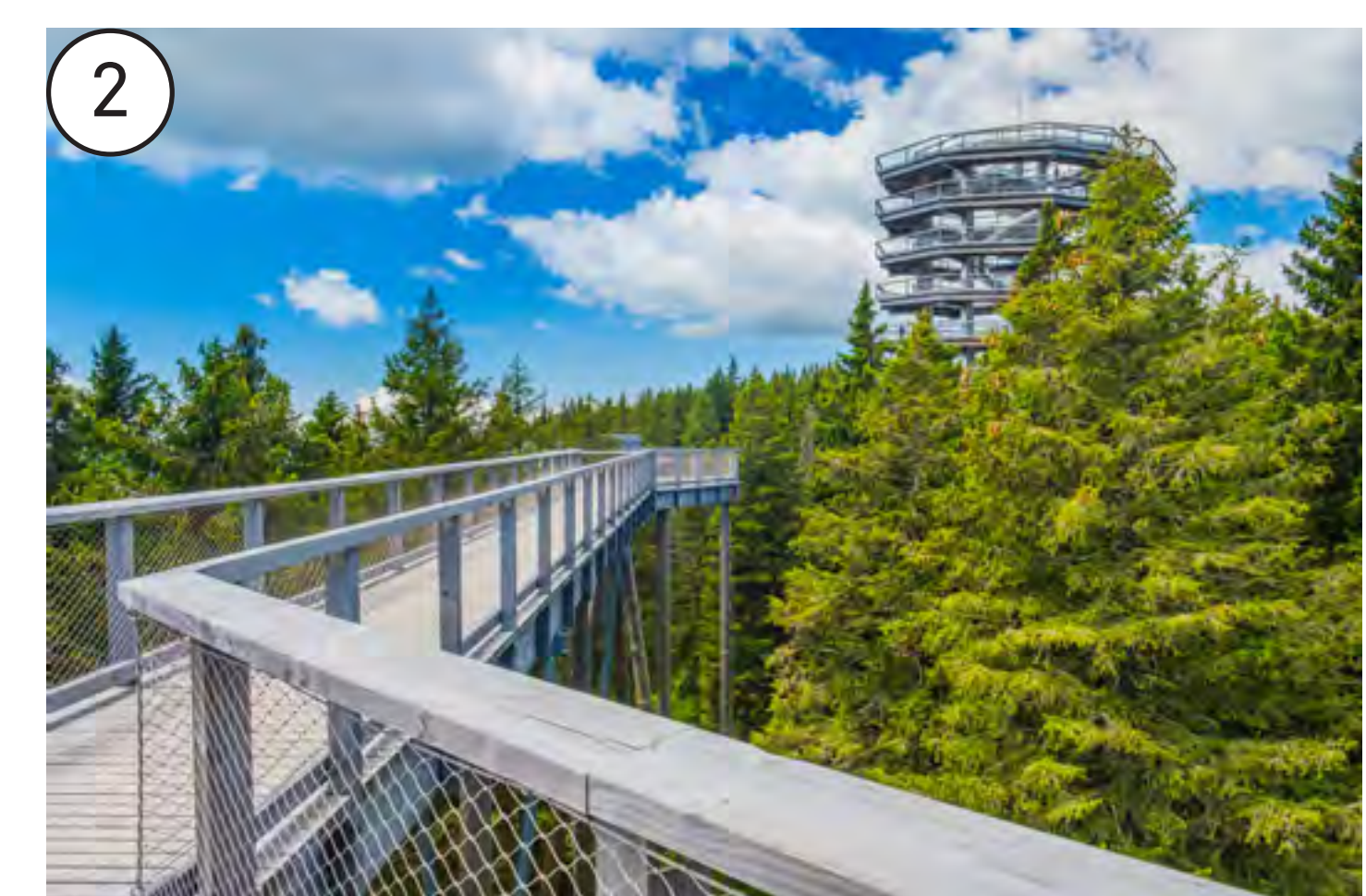
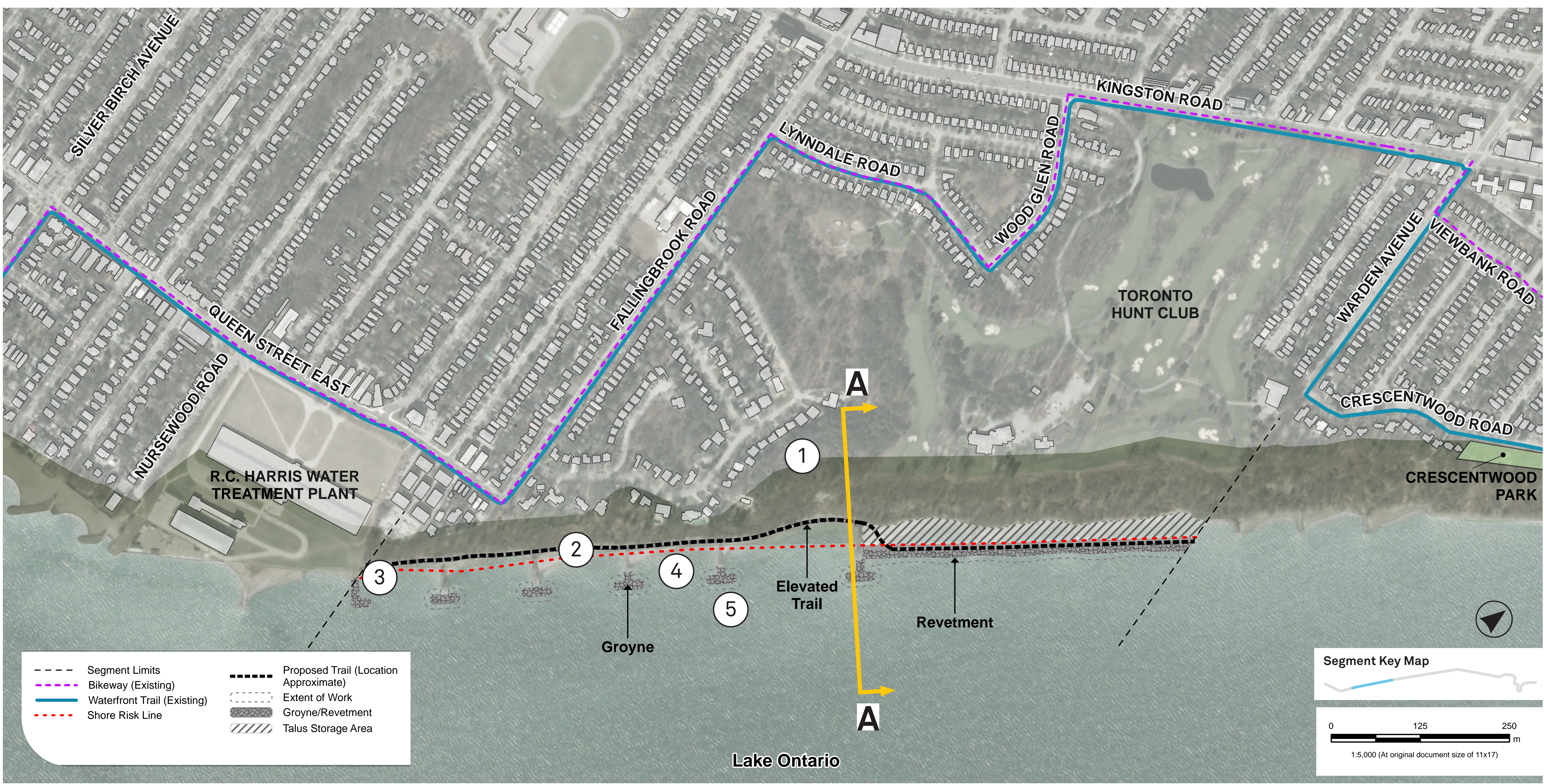
## SEGMENT 1B: ALTERNATIVE 2 GROYNES

SECTION AA



Please leave a sticky note if you have comments on the Alternatives drafted for Segment 1B. Did we miss anything?

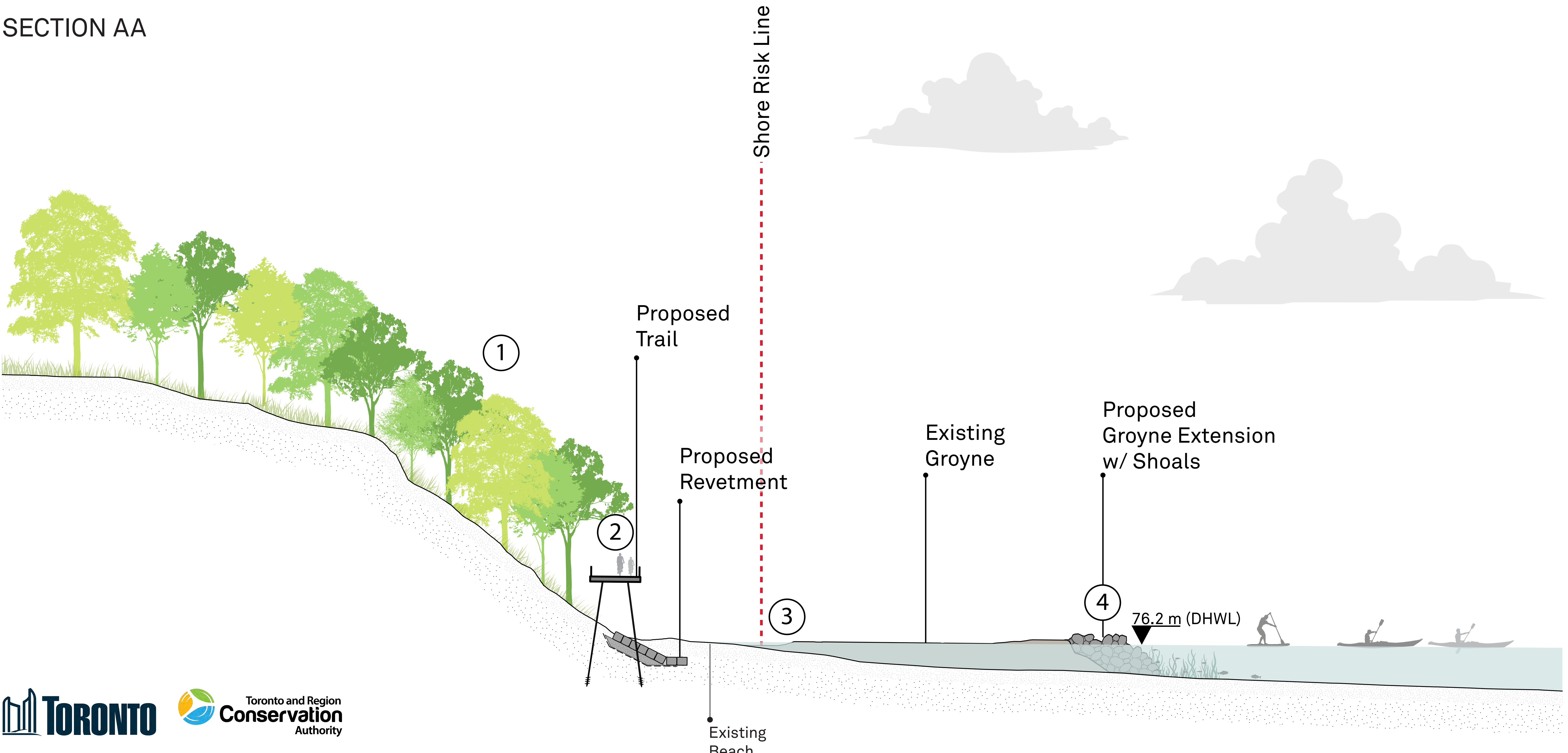
# SEGMENT 1B: RC HARRIS WTP TO WARDEN AVE



- Key Considerations**
- Existing beach is maintained with groyne extensions
  - Elevated boardwalk provides barrier free access and unique views
  - Opportunities for formal access to water would have to be further studied

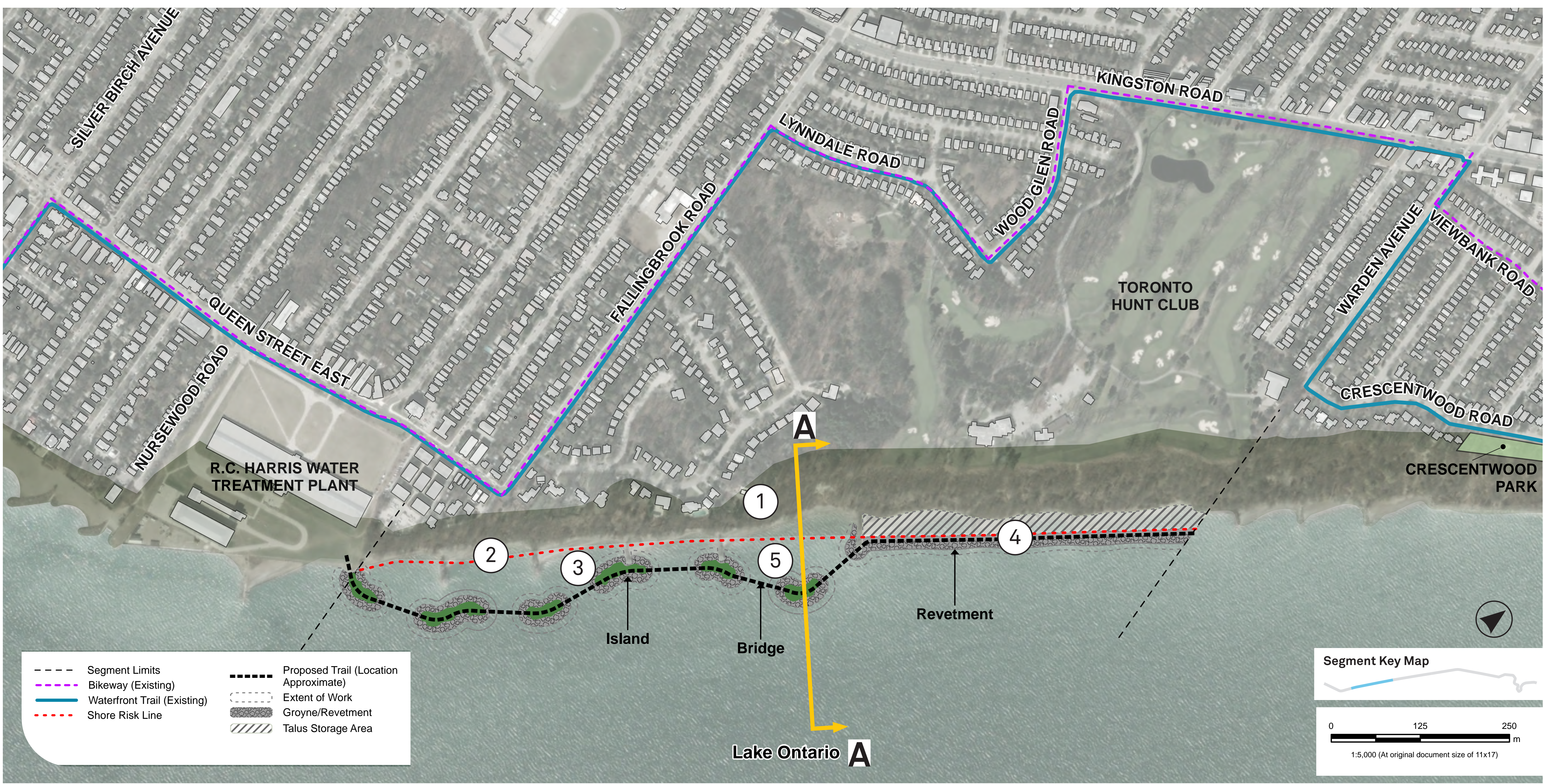
## SEGMENT 1B: ALTERNATIVE 3 ELEVATED BOARDWALK

SECTION AA



Please leave a sticky note if you have comments on the Alternatives drafted for Segment 1B. Did we miss anything?

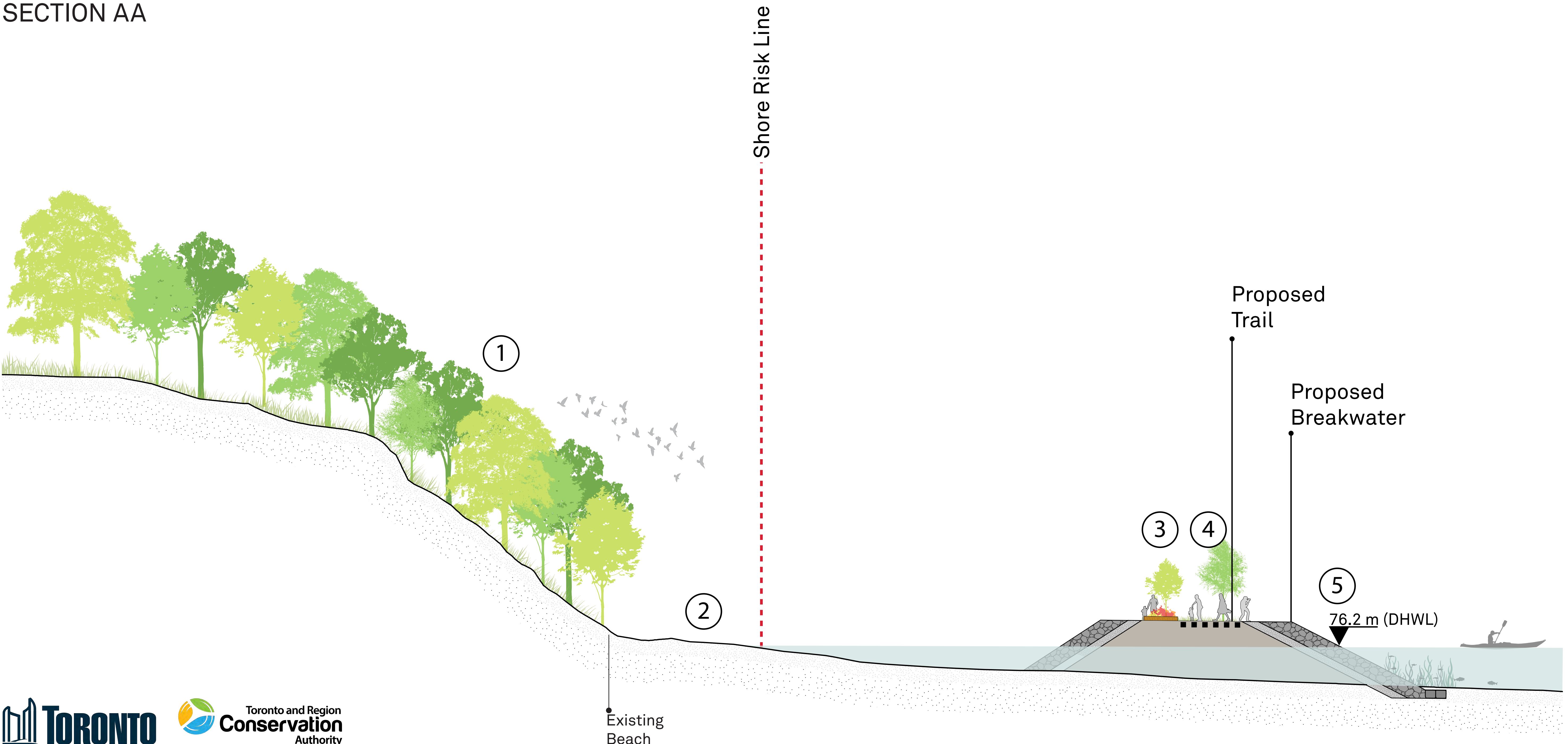
# SEGMENT 1B: RC HARRIS WTP TO WARDEN AVE



- Key Considerations**
- Existing beach remains
  - Islands and bridges provide off-shore experience
  - Wildlife habitat opportunities
  - May require winter closure
  - No formal access to water

## SEGMENT 1B: ALTERNATIVE 4 ISLANDS

SECTION AA



Please leave a sticky note if you have comments on the Alternatives drafted for Segment 1B. Did we miss anything?

