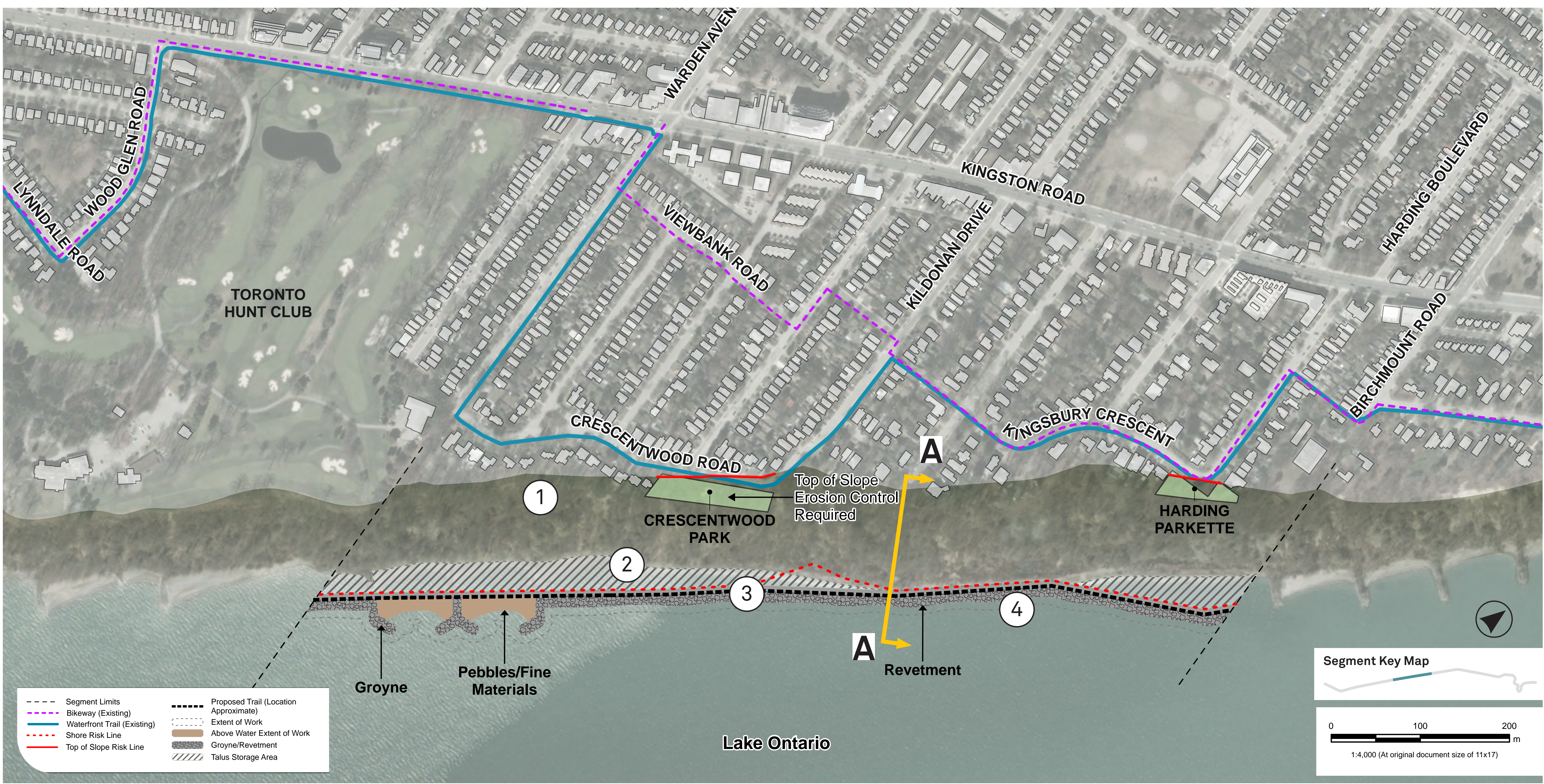


# SEGMENT 2: WARDEN AVE TO BIRCHMOUNT RD

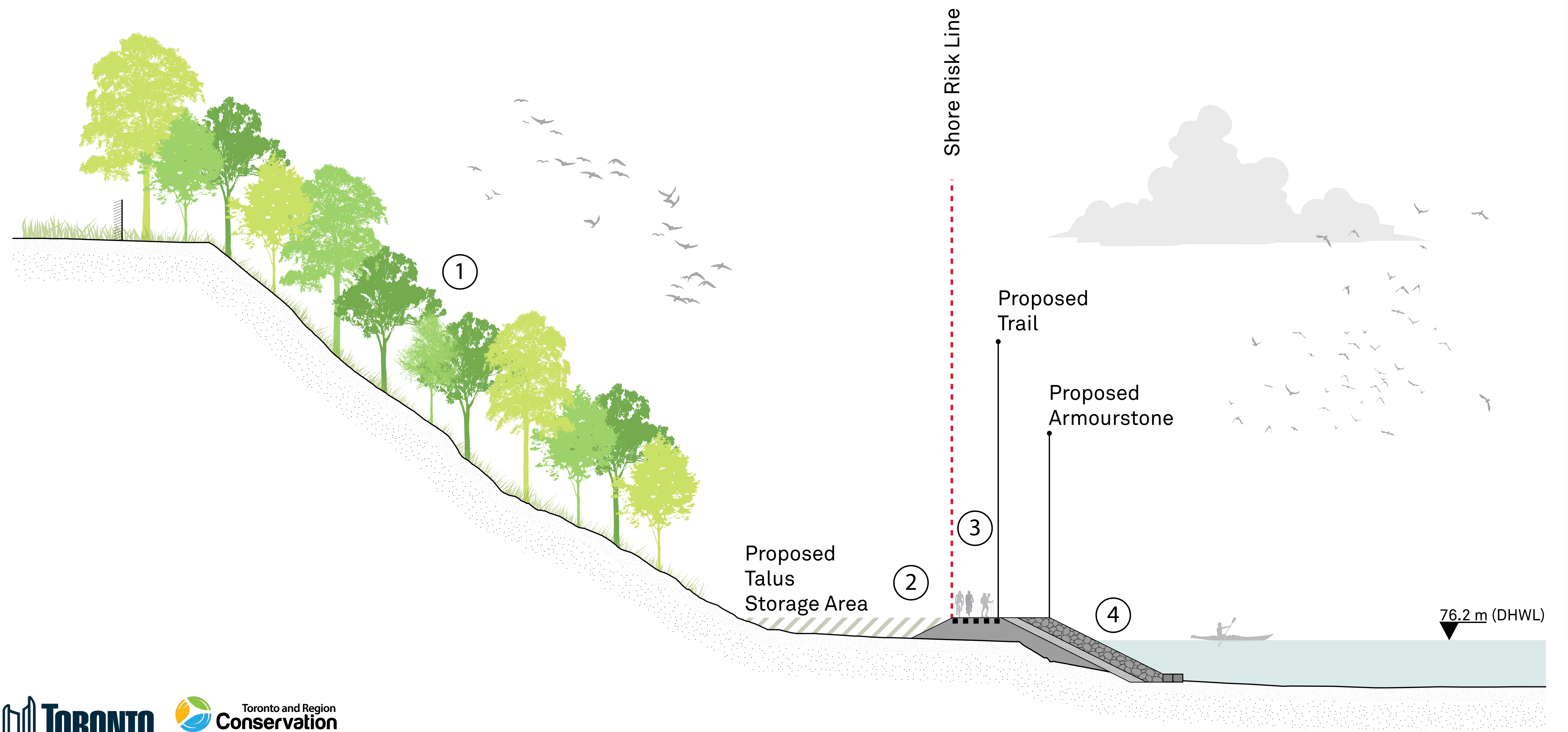


### Key Considerations

- Accessible trail along shore with access to water
- Revetment proposed where revetment already exists to minimize lakefill
- Opportunity to address Crescentwood Road erosion concerns

## SEGMENT 2: ALTERNATIVE 2 REVTMENT

### SECTION AA



Please leave a sticky note if you have comments on the Alternatives drafted for Segment 2. Did we miss anything?