



David Crombie Park Revitalization The Esplanade and Mill Street Connection Project Update: Construction Schedule

Public Information Meeting
March 2, 2026

Land Acknowledgement

African Ancestral Acknowledgement



Agenda

Meeting Purpose to provide an update on the David Crombie Park Revitalization and The Esplanade and Mill Street Connection Construction Plan

1. **David Crombie Park Revitalization Overview and Project Phases**
2. **Phase 2 Construction: David Crombie Park Revitalization Design Overview**
3. **The Esplanade and Mill Street Connection Project Overview**
4. **Phase 2 Construction Plan**
5. **Communications Plan**
6. **Questions and Answers**

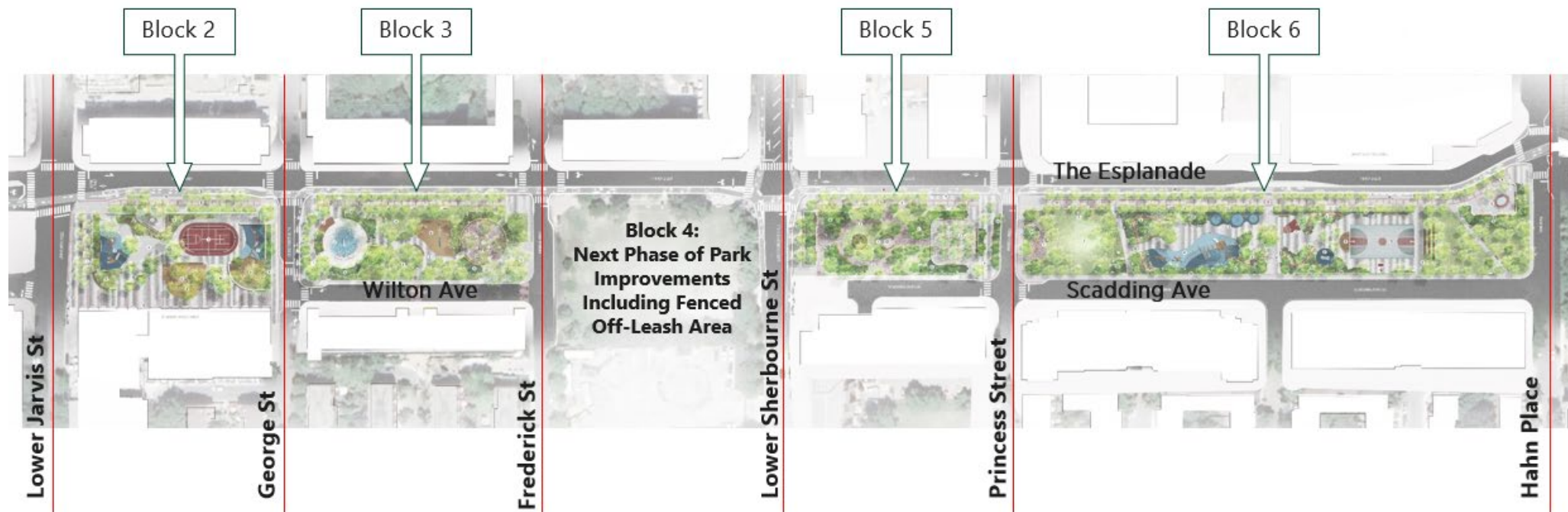
David Crombie Park Revitalization: Overview & Project Phases

Phase 1: Revitalization Design Concept (2020)



Revitalization Design Concept Plan (2020)

Phase 2: Implementation of Block 2, 3, 5 and 6



Phase 2: Construction (Current Phase)

- 2025: Hire a design team, detailed design and construction document preparation for the park, cycle track and streetscape improvements
- 2024: Hold on construction to allow for watermain replacement on The Esplanade
- Fall 2025: Hire a construction team
- **March 2026: Construction for Park and The Esplanade begins**
- Fall 2028: Construction for the park and The Esplanade completes

Phase 1: 2018 - 2022

- Comprehensive engagement from Fall 2018 to Fall 2019 including a variety of engagement activities:
- Indigenous Placekeeping Meetings
- Community Resource Group
- Public Meetings & Workshops
- Focus Groups
- Website & Social Media
- Online & Public Life Surveys
- School Board Meetings
- One on One Meetings

Phase 2: 2023 -2026

- July and August 2023 Park Pop Ups
- October 2023 Public Meeting: Preferred Concept
- March 2026: Construction Update



50 One on One Interviews
We talked with any interested member of the community about their views and priorities for the park.



Kick Off Meeting
Inspirational panel discussion about the park and best practices from around the world.



3 Workshops
Working meetings with the community to share ideas, get feedback, and talk about design concepts.




4 Community Resource Group Meetings
Dedicated members of the community and local stakeholders shared their thoughts on the emerging issues.



2 Indigenous Placekeeping Meetings
Learning how the Indigenous community views stewardship and discussing opportunities for Indigenous culture in the park.




School Board Meetings
Discussions about how the schools use the park, their priorities, best practices, and emerging concepts in educational play.



On-line Surveys
Community reaction and comments on the concept options and preferred plan.




Public Life Survey
3 seasons study of how people arrive at the park, the activities they engage in, and personal surveys of their opinions about the park.



Direct Communication
On-line and face to face discussions with people during the course of the study.



Focus Group Meetings
Discussions and idea sharing with stakeholders including seniors and kids.



Print Communications
Banner at the St. Lawrence Community Centre. Flyers and posters distributed around the neighbourhood.

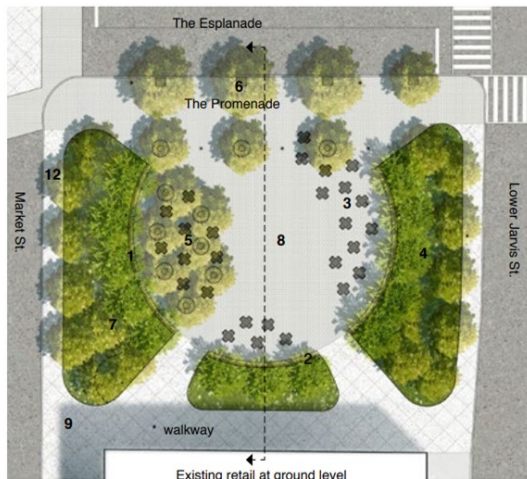


Website & Social Media
A dedicated information website and tweets about the study's progress and events.

Phase 3: Block 1 (125 Esplanade) & Block 4 (Frederick to Lower Sherbourne)

Phase 3: Anticipated Design & Construction (timeline subject to change)

- 2026-2027: Hire a design team, reconfirm 2020 concept plan with community consultation, prepare detail design and construction document for tender. Detail design will be based on 2020 concept plans (as shown below)
- 2028: Hire a construction team
- Spring 2029: Construction begins
- Fall 2029: Construction completes



Block 1 (125 Esplanade): 2020 Concept Plan

- Large plaza area framed by planting
- Ample seating as spill-out space for St. Lawrence Market



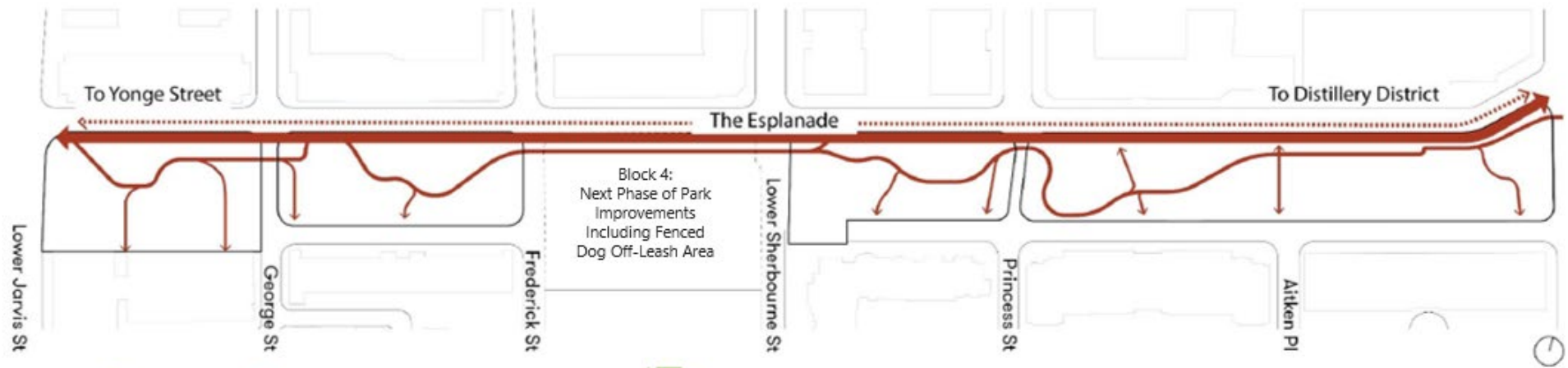
Block 4 (Frederick to Lower Sherbourne): 2020 Concept Plan

- New plaza / gathering space animated by special feature
- Fenced Off Leash Area on south end

Phase 2: David Crombie Park Revitalization Design Overview

David Crombie Park Revitalization Overview: Connectivity

- Block 2**
Shared Use Playground
Lower Jarvis to George Street
- Block 3**
Wading Pool & Garden Gathering Space
George St. to Frederick
- Block 4**
Next Phase of Park Improvements
Including Fenced Dog Off-Leash Area
- Block 5**
Sacred Fire, Lawn and Seating Grove
Lower Sherbourne St. to Princess St.
- Block 6a**
The Mound & Shared Use Playground
Princess St. to Hahn
- Block 6b**
Basketball Court & Water Feature
Princess St. to Hahn



Preserving the promenade



Supporting active mobility



Introducing a route in the park



David Crombie Park Revitalization Overview: Preserving Identity



— Retained concrete walls



Concrete planters



David Crombie Arch



Retaining walls

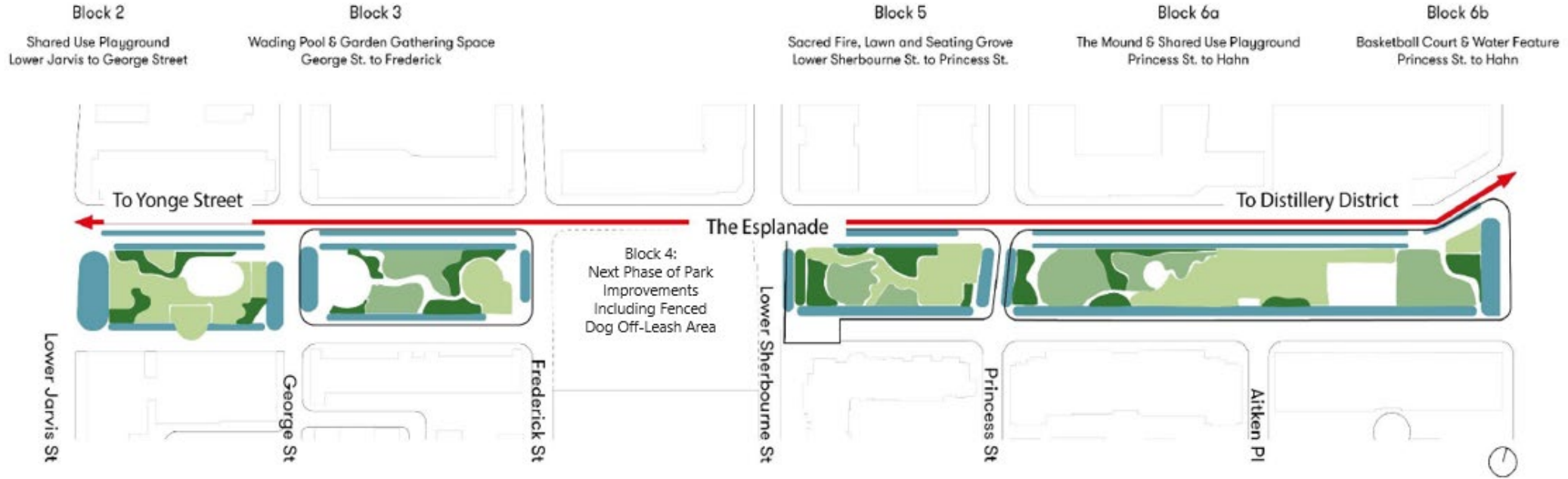


Sports court

David Crombie Park Revitalization Overview: Revitalized Tree Canopy



David Crombie Park Revitalization Overview: Four Planting Zones



● Edge Zones (Salt tolerant)



● Open Spaces (Plazas)



● Open Spaces (Lawns)

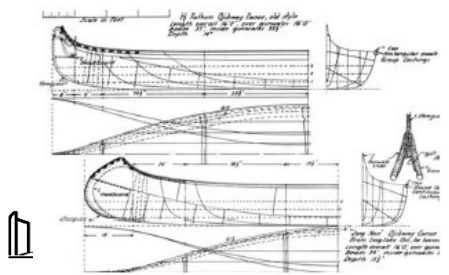


● Character planting

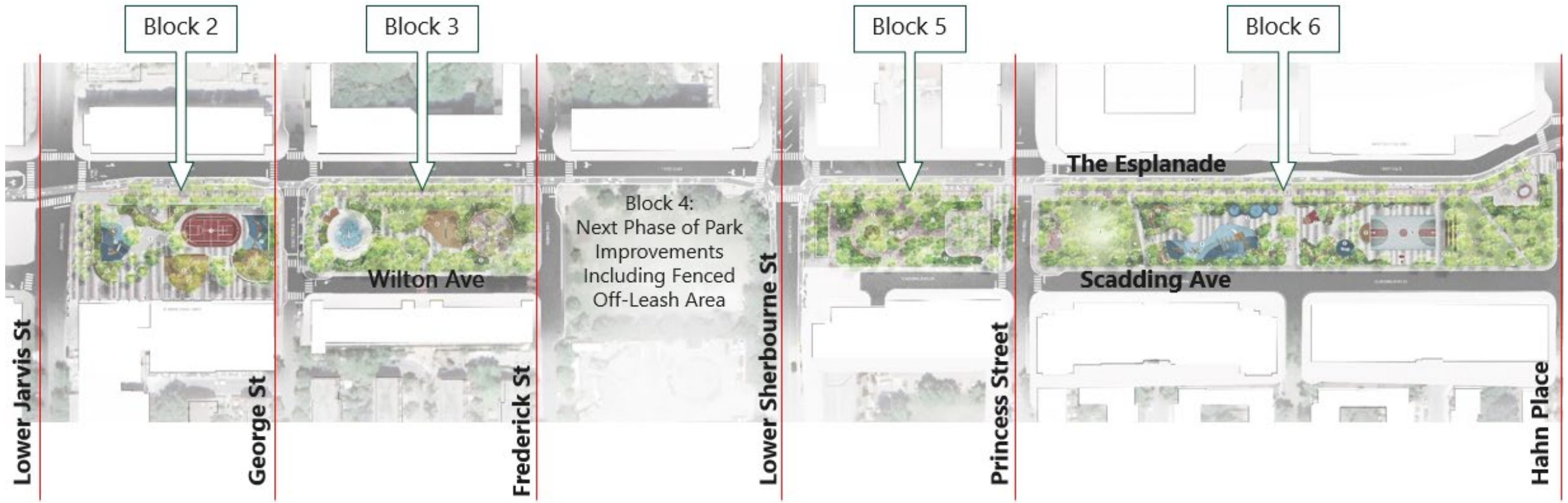
David Crombie Park Revitalization Overview: Indigenous Placekeeping



- PLAYGROUND & INDIGENOUS TEACHING ELEMENTS
- INDIGENOUS DESIGN COMMUNITY GATHERING SPACE
- INDIGENOUS CARDINAL STONES



David Crombie Park Revitalization Overview



Block 2 – Lower Jarvis to George St



Block 2 Legend

1. Lower Jarvis Plaza
2. Esplanade Seating Pocket
3. Multi-Sport Court
4. Flexible Play Area
5. Senior Playground
6. Daycare Playground
7. Junior Playground
8. Indigenous Boulder Carvings
9. Horticultural planting
10. Tree grove and social seating
11. School entrance
12. Bike Share station
13. Promenade paving restoration
14. Bus Stop and Transit Shelter
15. Cycle Track

Block 2 – Lower Jarvis to George St: Space for Play



Playground A
Senior Play (ages 5 – 12)



Playground B
Junior Play (ages 18 mos to 5)



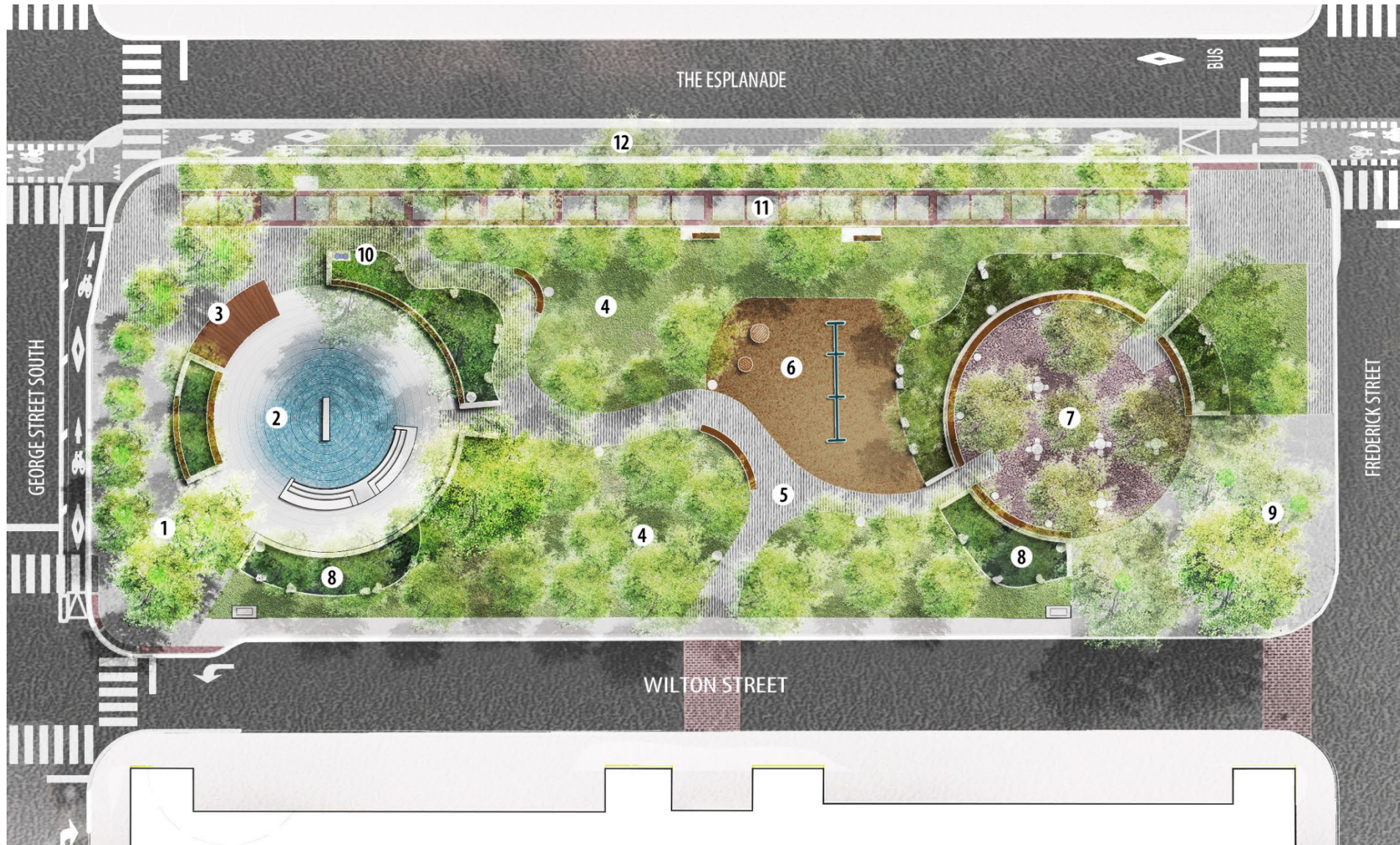
Playground C
Senior Play (ages 5 to 12)

Block 2 – Lower Jarvis to George St

VIEW LOOKING EAST FROM THE ESPLANADE – PUBLIC GATHERING AREA



Block 3 – George St to Frederick St



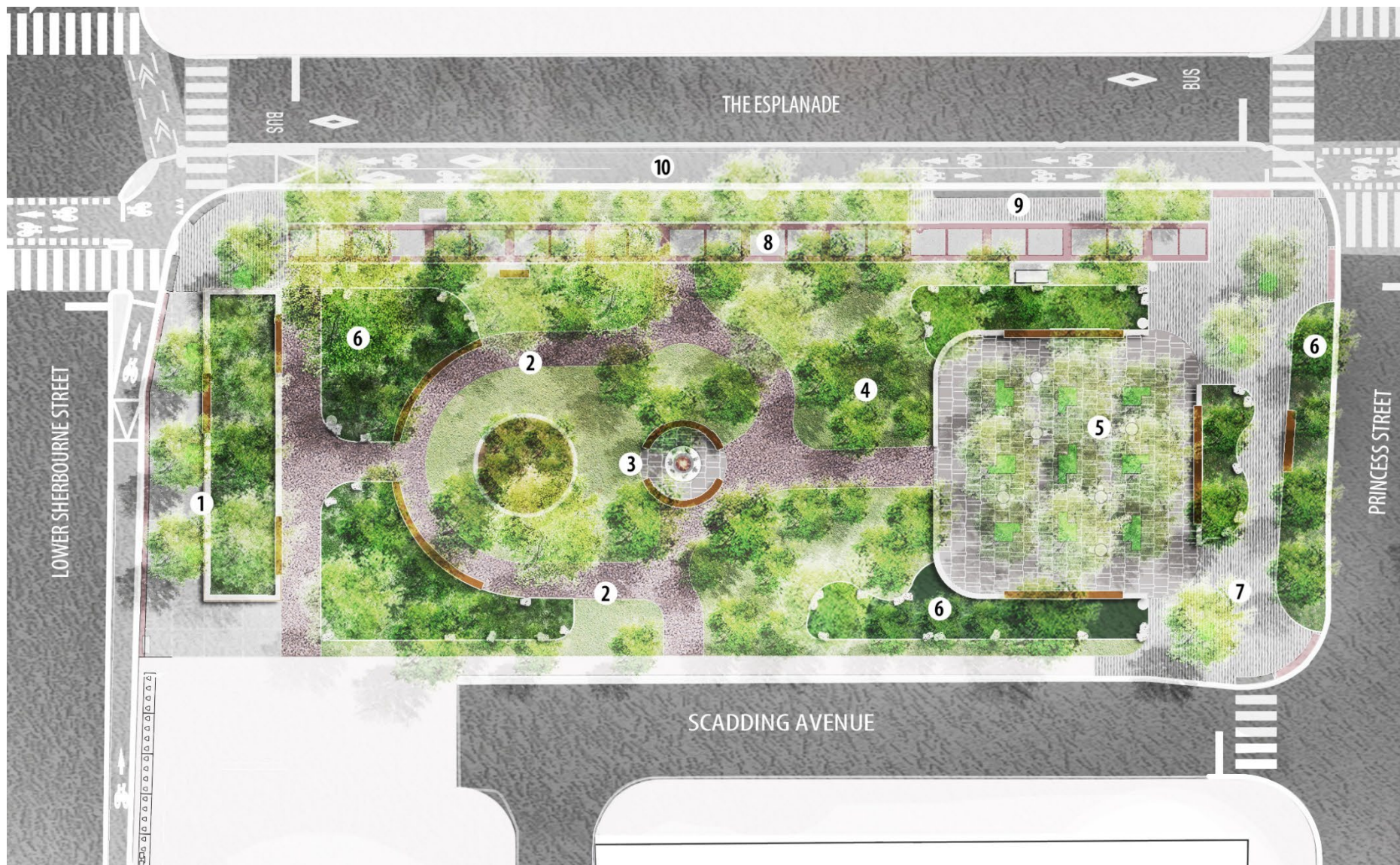
Block 3 Legend

1. George Street Plaza
2. Wading pool revitalization
3. Pool deck seating
4. Picnic lawn
5. Accessible walkway & seating
6. Existing swings and play feature
7. Seating circle and tree grove
8. Horticultural planting
9. Frederick street plaza
10. Bottle filler and drinking fountain
11. Promenade paving restoration
12. Cycle track

Block 3 – George St to Frederick St: Revitalized Wading Pool



Block 5 – Lower Sherbourne to Princess St



Block 5 Legend

1. Lower Sherborne Plaza
2. Accessible walking trail and seating
3. Indigenous designed cultural gathering space
4. Picnic lawn
5. Flagstone plaza and tree grove
6. Horticultural planting
7. Princess street plaza
8. Promenade paving restoration
9. Bus stop and transit shelter
10. Cycle track

Block 5 – Lower Sherbourne to Princess St of Tree Grove

VIEW LOOKING EAST: A NEW SEATING GROVE PLAZA



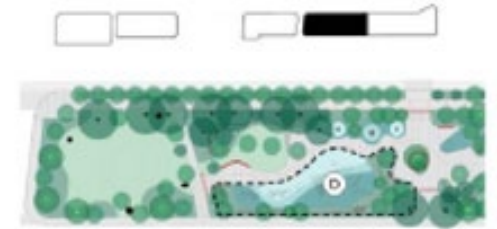
Block 6 – Princess St to Hahn Place



Block 6 Legend

1. Accessible picnic area
2. Existing mound
3. Indigenous Cardinal Stones (4)
4. Playground and Indigenous teaching elements
5. Trampoline area
6. Natural Play trail
7. Junior Basketball hoop
8. Junior climbing structure
9. Wood stage and tree grove
10. Table tennis area
11. Existing basketball court and wall mural
12. Terraced berm seat
13. Toboggan mound and picnic lawn
14. Water feature revitalization
15. Horticultural planting
16. Perimeter fence and gate restoration
17. Bottle filler and drinking fountain
18. Bike Share station
19. Promenade paving restoration
20. Cycle track

Block 6 – Princess St to Hahn Place: Space for Play



Block 6 – Princess St to Hahn Pl: View Looking East from Mound



Block 6 – Princess St to Hahn Pl: Revitalized Water Feature and Basketball Court



The Esplanade and Mill Street Connection Project Overview

The Esplanade and Mill Street Connection Project Overview



Existing in-street cycle track along David Crombie Park



Raised cycle track to be constructed along David Crombie Park

The Esplanade and Mill Street Connection Project Phases

The Esplanade and Mill Street Connection project was approved by City Council ([IE22.11](#)) in spring of 2021. The project is being implemented in phases:

- **Phase 1** (*Lower Sherbourne to Bayview Avenue*) was completed in fall 2021
- **Phase 2a** (*George Street to Lower Sherbourne*) was completed in spring 2022
- **Phase 2b** (*Scott Street to Market Street*) is currently under construction by ECS as part of watermain work on The Esplanade and will be completed in winter 2026, Yonge Street to Scott Street will be installed in spring 2026 following ECS watermain work on Scott Street
- **Phase 3** (*Market Street to Berkeley Street/Hahn Place*) to begin in 2027, paired with David Crombie Park Revitalization



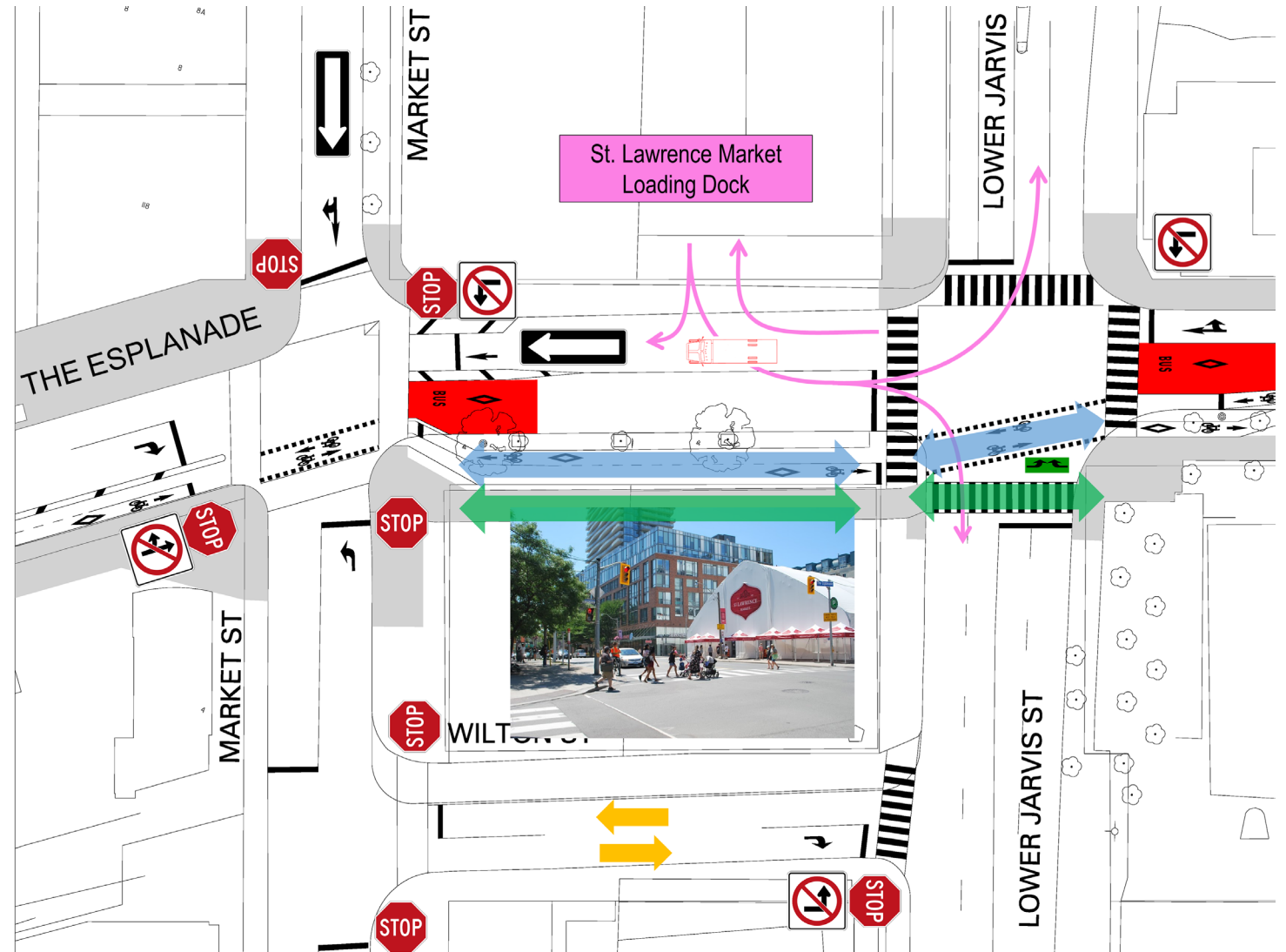
The Esplanade Cycle Track Upgrades (George to Berkeley/Hahn)



The Esplanade Cycle Track New Connection (Market to Lower Jarvis)

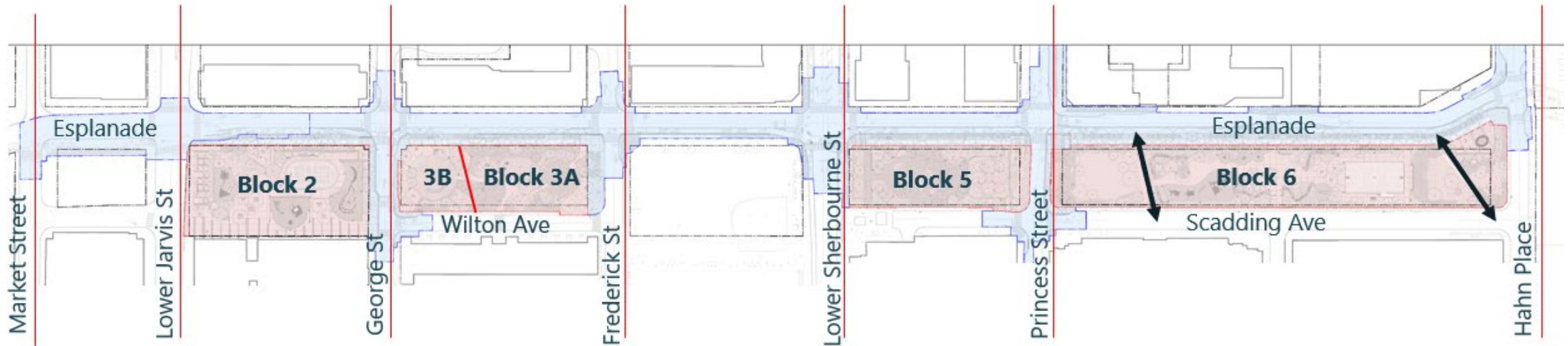
Between Market Street and Lower Jarvis Street:


- Raised cycle track and new sidewalk to be constructed adjacent to Block 1
- New bus-only restriction to be installed for eastbound at Market Street
- Access for St. Lawrence Market loading dock to/from Lower Jarvis Street to be maintained





Phase 2: Construction Plan

Construction Phasing Diagram *(timeline subject to change)



 **David Crombie Park Revitalization:**
Construction phased by blocks – refer to plan for phasing.

 **The Esplanade and Mill Street Connection:**
Detailed construction phasing to be developed as project progresses. Additional updates to be provided once confirmed.

 **Pathways** will remain open whenever possible, with temporary closures in place as required to support construction activity.

Construction Schedule

- Block 2: march to December 2026
- Block 5: March to December 2026
- Block 3A: Spring to Fall 2027
- Block 3B (wading pool): Fall 2027 to Spring 2028
- Block 6: Spring 2027 to Fall 2028
- The Esplanade and Mill Street Connection: Summer 2027 to Fall 2028

What to Expect During David Crombie Park Revitalization Construction

Park Access and Circulation

- Construction will be phased by blocks to minimize park closures and to keep parts of the park open while other blocks are closed.
- Internal park pedestrian routes may be temporarily closed or detoured (i.e. north/south paths in Bl. 6).
- In general, sidewalks and roads around the park will not be blocked.
- Pedestrian detour signage will be installed as required.

Site Fencing

- Site fencing will be installed around active construction blocks. Fencing will include project signage.
- Fencing might be adjusted to open completed construction area as required.
- Tree protection fencing will be installed around existing trees.

Construction

- Work will occur during permitted hours, in accordance with City by-laws.
- Construction vehicles entering/exiting the site for deliveries and material haulage.
- Noisiest work typically during demolition (e.g., concrete removal and material loading).

Construction Details

- Construction will consist of installation of the raised bikeway, intersection upgrades including curb extensions and protected intersection elements, sections of roadway resurfacing, and traffic signal modifications.
- Work will take place from 7 a.m. to 7 p.m., Monday to Friday, with work after hours and on weekends as required.

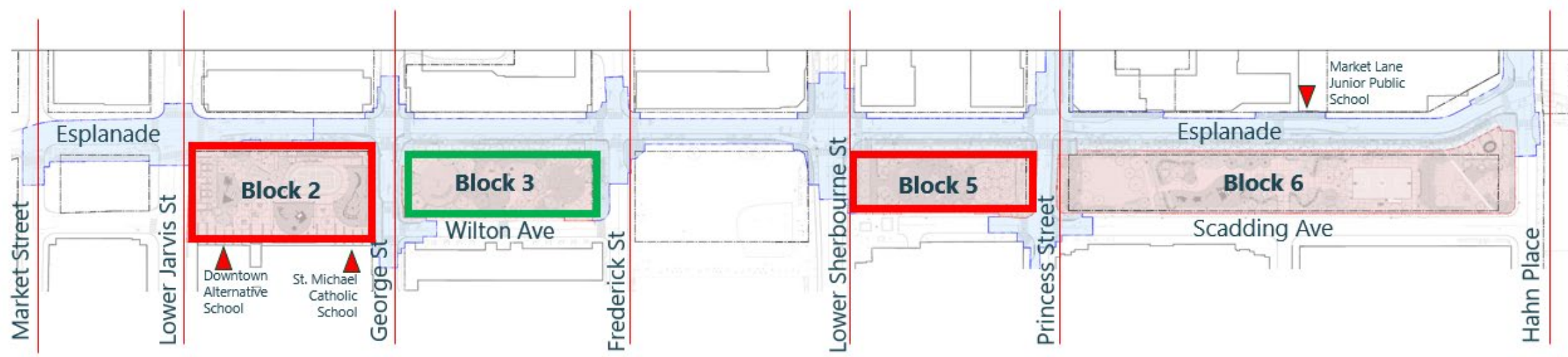
Traffic and Parking

- To complete the work in a safe manner, there will be road, sidewalk, and bikeway restrictions within the work zone.
- Access for emergency vehicles will be maintained at all times.
- Construction may affect on-street parking, as needed.

Pedestrians and Cyclists

- Safe and accessible walkways and entryways will be maintained during construction with possible disruptions communicated as soon as possible.
- Temporary detours for people cycling will be provided when necessary to enable cycle track upgrades.

Recess Location Options During Block 2 Closure For Construction



 **David Crombie Park Revitalization**

 **The Esplanade and Mill Street Connection :**
Active Construction
2027 -2028

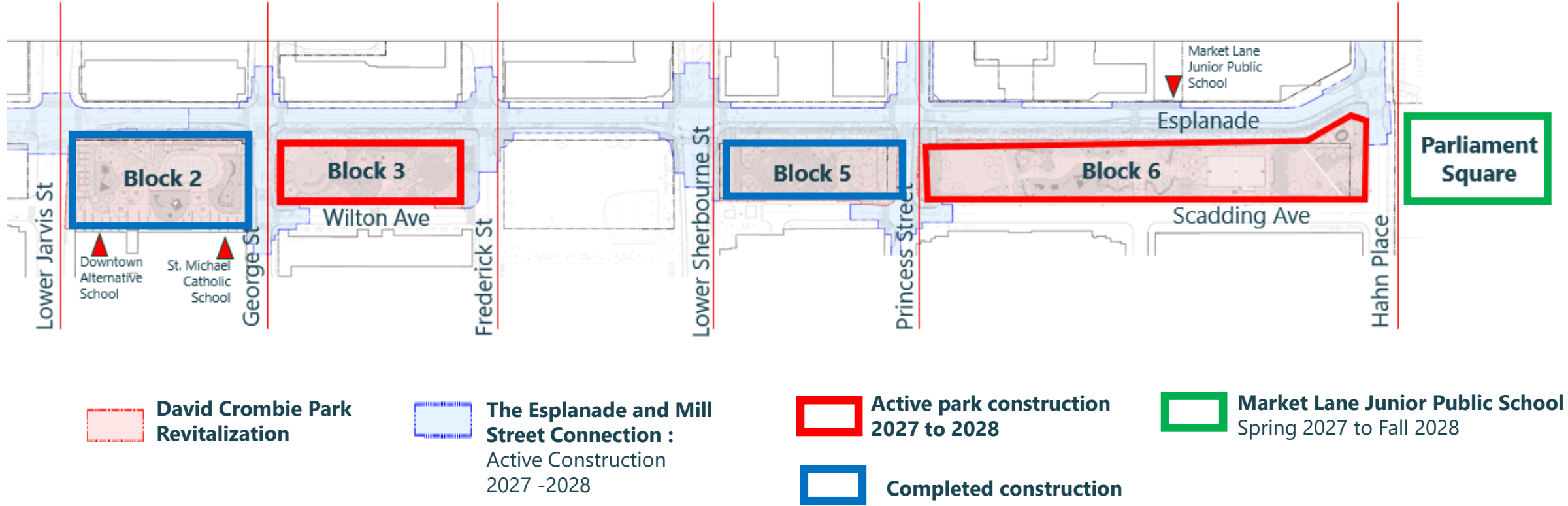
 **Active construction**
2026

 **Downtown Alternative School and St. Michael Catholic School**

March 10 to June 26, 2026
September 8 to December 20, 2026

8AM to 6PM

Recess Location Options During Block 6 Closure For Construction



Communications Plan

Recent meetings with key community stakeholders:

- **Key community stakeholders**

Old Town BIA, the SLNA, the St. Lawrence Market and other local stakeholders
February 17th, 11:00am to 12:00pm
Online

- **School stakeholders meeting**

February 18th, 3:00 to 4:00pm
Online

- **St. Michael Catholic School and Downtown Alternative School Site Visit For Block 2**

February 20th, 10:00 to 11:00am
In Person at the school/park

Annual public information meetings to be held during the construction period, as needed.

David Crombie Park Revitalization

- Updates will be posted on the project webpage
- Updates will be distributed to the project listserve
- Monthly updates will be provided to both of the Councillor's Offices.

The Esplanade – Mill Street Connection Project

- Updates will be posted on the project webpage and to email subscribers. Email CycleStLawrence@toronto.ca to join.
- Monthly updates will be provided to both of the Councillor's Offices.

David Crombie Park Revitalization Project -
toronto.ca/DavidCrombiePark

The Esplanade and Mill Street Connection Project -
toronto.ca/EsplanadeMill

For Questions and Information: Contact 311

Project Team will provide regular updates to 311

- **Online:** toronto.ca/311
- **App:** Download the free 311 app
- **Call:** 3-1-1

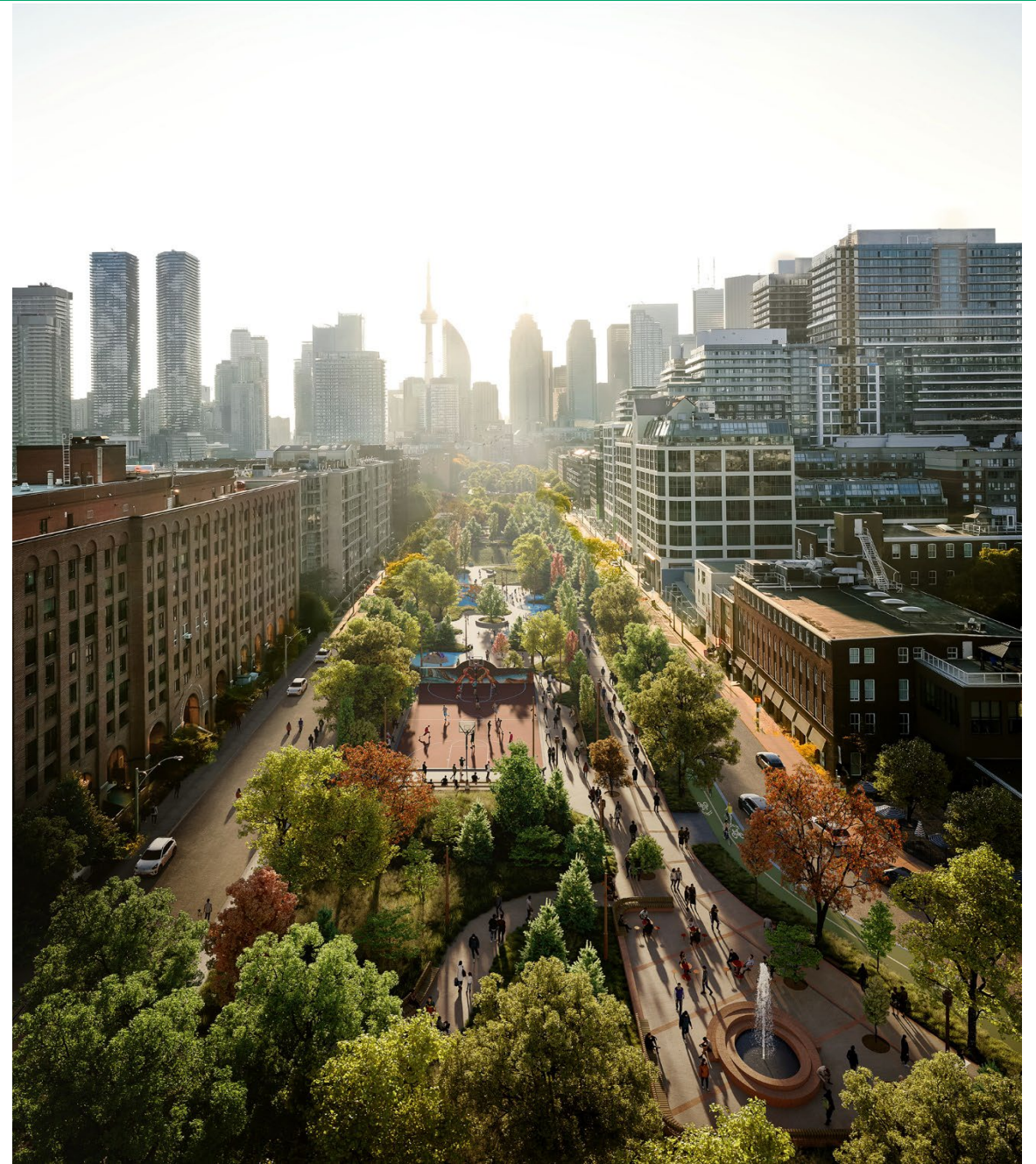
Construction Fencing will include project signage.

The sign will direct the public to 311 and the project webpage.

The project webpages will be updated with construction milestones:

David Crombie Park Revitalization Project -
toronto.ca/DavidCrombiePark

The Esplanade and Mill Street Connection Project -
toronto.ca/EsplanadeMill



Questions and Answers