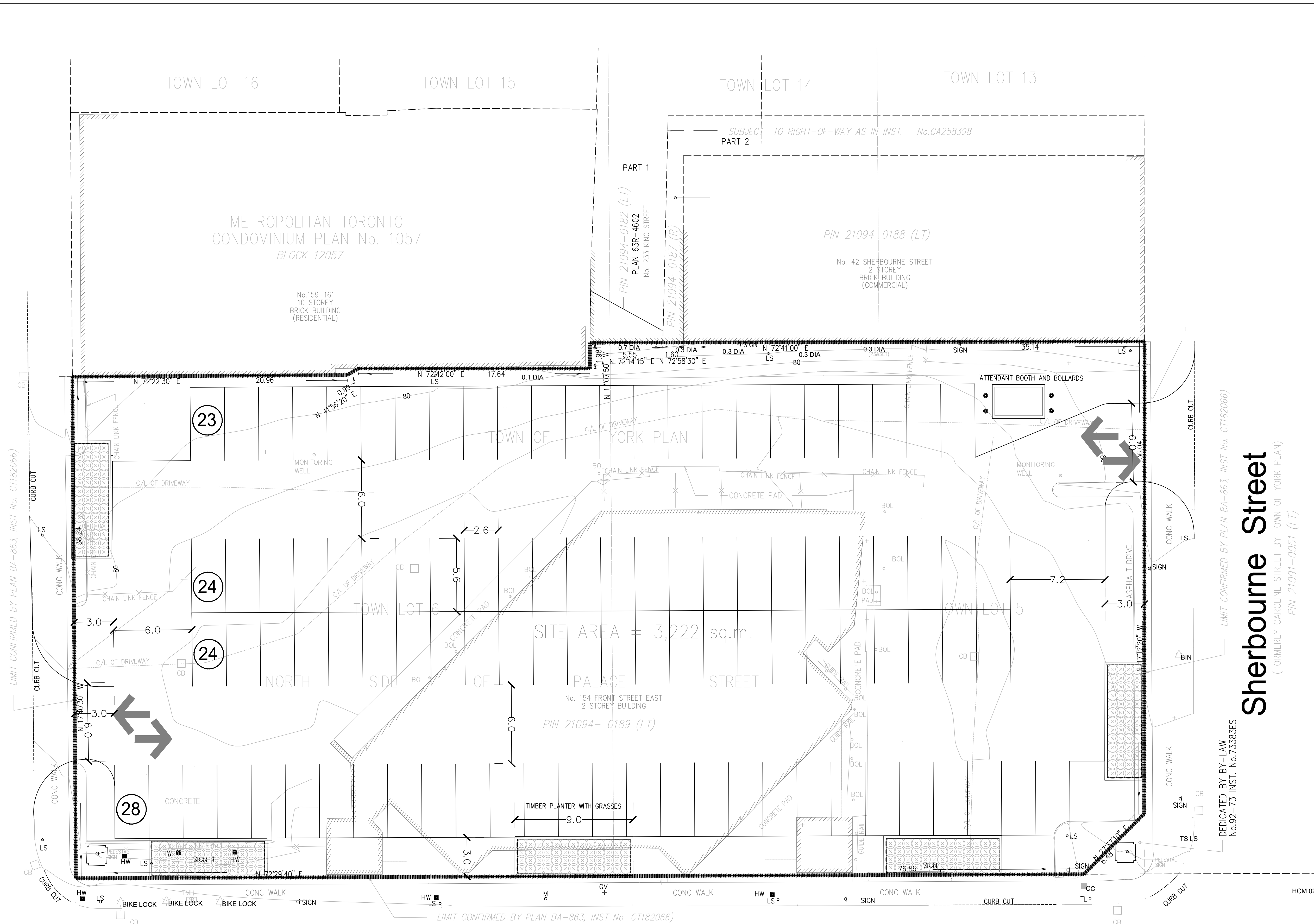


Frederick Street
(BY TOWN OF YORK PLAN)
PIN 21094-0196 (LT)



Front Street East

(FORMERLY PALACE STREET BY TOWN OF YORK PLAN)
PIN 21094-0190 (LT)

NOT FOR CONSTRUCTION

LEGEND
ALL ITEMS ARE TO
BE PROVIDED UNLESS
OTHERWISE NOTED



- GENERAL NOTES**
1. Drawing is in metric scale. Dimensions under 1000 mm are shown as whole number.
 2. No extra will be allowed for discrepancies between the drawings and actual site conditions unless reported in writing prior to commencement of work.
 3. Do not leave any holes open overnight.
 4. Make good all damage resulting from the work at no extra cost.
 5. Keep area outside construction zone clean and usable by others at all times.
 6. No stockpile is allowed on site without Owner's approval and engineering drawings.
 7. Contractor is to submit samples of all proposed materials in this contract for approval prior to placing orders.
 8. Contractor to request stake out and verify locations for all utilities prior to any construction, and report all conflicts to the Landscape Architect in writing. Contractor to obtain written instructions prior to starting work.
 9. This drawing to be read in conjunction with Architect's site plan and engineering drawings.
 10. All shrubs and coniferous planting to be in continuous beds. All planting to meet municipality's specifications.
 11. Contractor to layout all landscape elements, and confirm locations with the Landscape Architect prior to proceeding.
 12. Landscape contractor must always follow the approved engineering grading plans. Report any discrepancies to landscape architect and engineer.
 13. Master plant list - all plant material to be clay grown stock. Contractor to confirm that the plant quantities shown on the plant list conform to the landscape Drawings. Landscape drawings supersede the plant list totals. Any discrepancies not reported shall be the responsibility of the landscape contractor.
 14. All shrubs to be fibre pot container stock. All trees to be string ball stock.
 15. Contractor shall provide marked-up redline plans showing as-built conditions to the Landscape Architect prior to obtaining substantial completion.
 16. Contractor to install new sod and new topsoil as per specifications and general notes throughout the site as designed. New topsoil and sod shall extend through the municipal boulevard to the rear of the municipal curb.
 17. All planting beds that are surrounded by sod should be cut and edged at a 45° angle, so there is a clear and well defined separation between the planting beds and sodded areas.

no.	revision	date	by
1	ISSUED FOR SPA	29/09/11	MSB

Contractor must verify all dimensions on the job and report any discrepancy to the landscape architect before proceeding with the work.
All drawings and specifications are instruments of service and the property of the landscape architect which must be returned at the completion of the work.
All drawings to be used for construction only when signed by the landscape architect.

signed _____ date _____

terrapian
LANDSCAPE ARCHITECTS

20 Champlain Blvd.,
Suite 102
Toronto, Ontario,
M3H 2Z1, Canada
Tel: (416) 638-4911
Fax: (416) 638-4261

Email: terrapian@terrapian.ca Web: www.terrapian.ca

154 FRONT STREET
TORONTO ONTARIO

project:

SURFACE PARKING LOT SITE/LANDSCAPE PLAN

dwn	MSB
ckd	MB
scale	1:150
date	29-09-2011
proj. no.	11-125
sheet no.	L-103
appvd.	



March 11, 2011 9:38 a.m.