

Working Station #3

VISUAL PREFERENCE SURVEY

Step A. Please identify with a check mark, the precedents that you like (please choose as many as you like).

Step B. On the attached map, please indicate using the number, where you would like to see these precedents.

LOW-RISE BUILDINGS



1. Montreal (3 storeys)



2. King Street East (3 storeys)



3. Port Credit Village (3 storeys)



4. Vancouver (4 storeys)

MID-RISE BUILDINGS



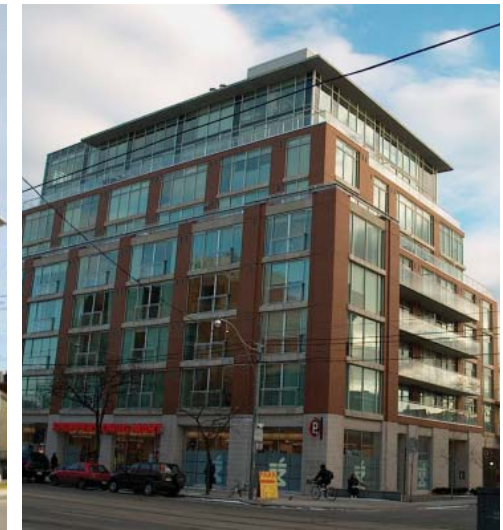
5. Yorkville Avenue (9 storeys)



6. Vancouver (8 storeys)



6. Portland Street (8 storeys)



8. College Street (9 storeys)

Working Station #3

VISUAL PREFERENCE SURVEY

TALLER BUILDINGS



9. Adelaide St. E (15 storeys)



10. New York City (15 storeys)



11. Toronto (15 storeys)



12. Vancouver (16 storeys)

OPEN SPACE & STREETSCAPE



13. Square Victoria (Montreal)



14. Mid-block connection (Yorkville)



15. Urban Plaza - Yorkville



16. Cloud Garden - Toronto

Working Station #3

VISUAL PREFERENCE SURVEY

Please mark on the map below where the precedents on the previous pages should be located.

