

## Release of the 2006 Census on Ethnic Origin and Visible Minorities

### Key Points:

- Across Canada there has been an almost four-fold increase since 1981 in people who identify themselves as visible minorities – up from 1.1 million in 1981 to just over 5 million in 2006.
- Nationally, 96% of the visible minority population live in a metropolitan area compared with 68% of the total population.
- The Toronto Census Metropolitan Area (CMA) has now surpassed Vancouver CMA slightly, with the highest proportion of the visible minority population of any Canadian CMA(1). Forty-three percent of the Toronto CMA’s population belongs to a visible minority group.
- The city of Toronto accounted for 22.9% of all visible minority persons in Canada, and 42.4% of visible minority persons in Ontario.
- Nearly half of the city’s population (47% or 1,162,635 people), are visible minorities, up from 42.8% (1,051,125) in 2001.
- The city of Toronto’s visible minority population increased by 10.6% since 2001, and by 31.8% since 1996. By comparison, the non-visible minority population in Toronto declined by 6.5% and 11.3% over the respective periods.
- The South Asian population has now exceeded the Chinese population as the top visible minority group in Toronto. The top five visible minority groups (as defined by Statistics Canada) in Toronto were:
  - South Asian at 298,370 or 12.0% of our population
  - Chinese at 283,075 or 11.4%
  - Black at 208,555 or 8.4%
  - Filipino at 102,555 or 4.1%
  - Latin American at 64,860 or 2.6%
- From 2001 to 2006, the fastest growing single visible minority group in Toronto, were Latin Americans.
- Toronto’s rich multicultural diversity is expressed by the more than 200 distinct ethnic origins residents identified in their response to the 2006 Census.

---

(1) Some numbers are reported for Census Metropolitan Area (CMA) for national comparisons, while others are for the Greater Toronto Area (GTA), and city (City of Toronto). Refer to the definitions below for further information.

- Twenty-eight percent of all ethnic origin responses in Toronto were European; 19% identified themselves with the British Isles (including England, Scotland, and Ireland); 16% as East or Southeast Asian; and 10% as South Asian in origin.

## **Visible Minorities:**

### Nationally

- Across Canada, there has been an almost four-fold increase since 1981 in people who identify themselves as visible minorities – up from 1.1 million in 1981 to just over 5 million in 2008.
- Visible minorities now comprise more than 16% of Canada’s total population as their number increased by 27% between 2001 and 2006, more than five times the previous increase of 5.4%. This is due in part, to the fact that three-quarters of all immigrants who came to Canada since 2001 were members of visible minority groups.
- Nationally, 96% of the visible minority population live in a metropolitan area compared with 68% of the total population.
- Toronto has now surpassed Vancouver CMA slightly, with the highest proportion of visible minority population of any Canadian Census Metropolitan Area (for a definition of CMA, see below). Forty-three percent of the Toronto CMA population belongs to a visible minority group.

### Toronto

- Almost 1 in 4 visible minority persons in Canada resides in Toronto. The city of Toronto accounted for 22.9% of all visible minority persons in Canada, and 42.4% of visible minority persons in Ontario.
- Within the Greater Toronto Area, the city of Toronto has 52.4% of visible minority persons in the GTA. Toronto’s share of visible minority persons in relation to these geographies however, has fallen since 1996 as immigrant populations have continued to settle in areas outside of the city.
- Regional municipalities in the rest of the GTA have seen sharp growth in visible minority populations, increasing by 53.2% from 2001 to 2006 and 121.7% over the past decade.
- 1,057,400 visible minority persons lived in the rest of the GTA in 2006. Among regional municipalities, the largest number of visible minority persons lived in Peel Region, where they account for 50% of the total population. This is followed by York region, where 37.2% of the population identified themselves as a visible minority in 2006.
- Nearly half of the city’s population (47% or 1,162,635 people), are visible minorities, up from 42.8% (1,051,125) in 2001.
- The city of Toronto’s visible minority population increased by 10.6% since 2001, and by 31.8% since 1996. By comparison, the non-visible minority population in Toronto declined by 6.5% and 11.3% over the respective periods.
- The South Asian population has now overtaken Chinese as the top visible minority group in Toronto. The top five visible minority groups in Toronto were:
  - South Asian at 298,370 or 12.0% of our population
  - Chinese at 283,075 or 11.4%
  - Black at 208,555 or 8.4%
  - Filipino at 102,555 or 4.1%

- Latin American at 64,860 or 2.6%
- From 2001 to 2006, the fastest growing single visible minority groups in Toronto were Latin Americans (up 19.3%), Filipinos (up 18.6%), South Asians (up 17.5%), Koreans (up 15%), and West Asians (up 14.5%). At the same time, the number of persons identifying themselves with multiple visible minority origins increased by 56.6%.

### **Ethnic Origin:**

Note on Ethnic Origin counts: Since a person may identify by more than one ethnic origin, the numbers here are quoted as “responses” as opposed to “persons”, and will therefore not add up to the total population.

- Toronto’s rich multi-cultural diversity is expressed by the more than 200 distinct ethnic origins residents identified in their response to the 2006 Census.
- Twenty-eight percent of all ethnic origin responses in Toronto were European; 19% identified themselves with the British Isles (including England, Scotland, and Ireland); 16% as East or Southeast Asian; and 10% as South Asian in origin.
- The growing prominence of non-European ethnic identity continues a trend that began in the 1980s as Toronto’s population changed as the result of increasing immigration from Asia and other parts of the world.
- The most frequently identified “single” identities (as opposed to “multiple” origin identity) in 2006 were English, Chinese, Canadian, Scottish, Irish, East Indian and Italian.
- Eleven percent of Torontonians identified themselves as Canadian in origin. The proportion of Toronto residents indicating Canadian is significantly lower than the rest of Canada, Ontario and the GTA. In 2006, 32.2% of all Canadians, 23% of Ontario and 16.8% of persons in the rest of the GTA indicated Canadian as their ethnic origin.

### **Definition and Notes**

*Toronto Geography:* The term “Toronto” or “city” refers to the “City of Toronto” unless otherwise specified. The term “Greater Toronto Area” refers to the City of Toronto and the surrounding Regional Municipalities of Halton, Peel, York, and Durham. The term “905” refers only to the Regional Municipalities. The “Census Metropolitan Area” is defined as an area consisting of one or more adjacent municipalities totalling at least 100,000 people, situated around a major urban core. To form a census metropolitan area, the urban core must have a population of at least 50,000. The Toronto CMA is not the same as the Greater Toronto Area. For an exact definition refer to Statistics Canada.

*Census Undercount:* Although Statistics Canada makes great efforts to count every person, some people are missed in each Census. (e.g., people may be traveling, or some dwellings are hard to find). Following a review of the 2006 Census results for Toronto, City of Toronto staff identified the possibility that the Census may have undercounted more of Toronto's population than usual. At the time of this publication, staff continue to investigate this issue.

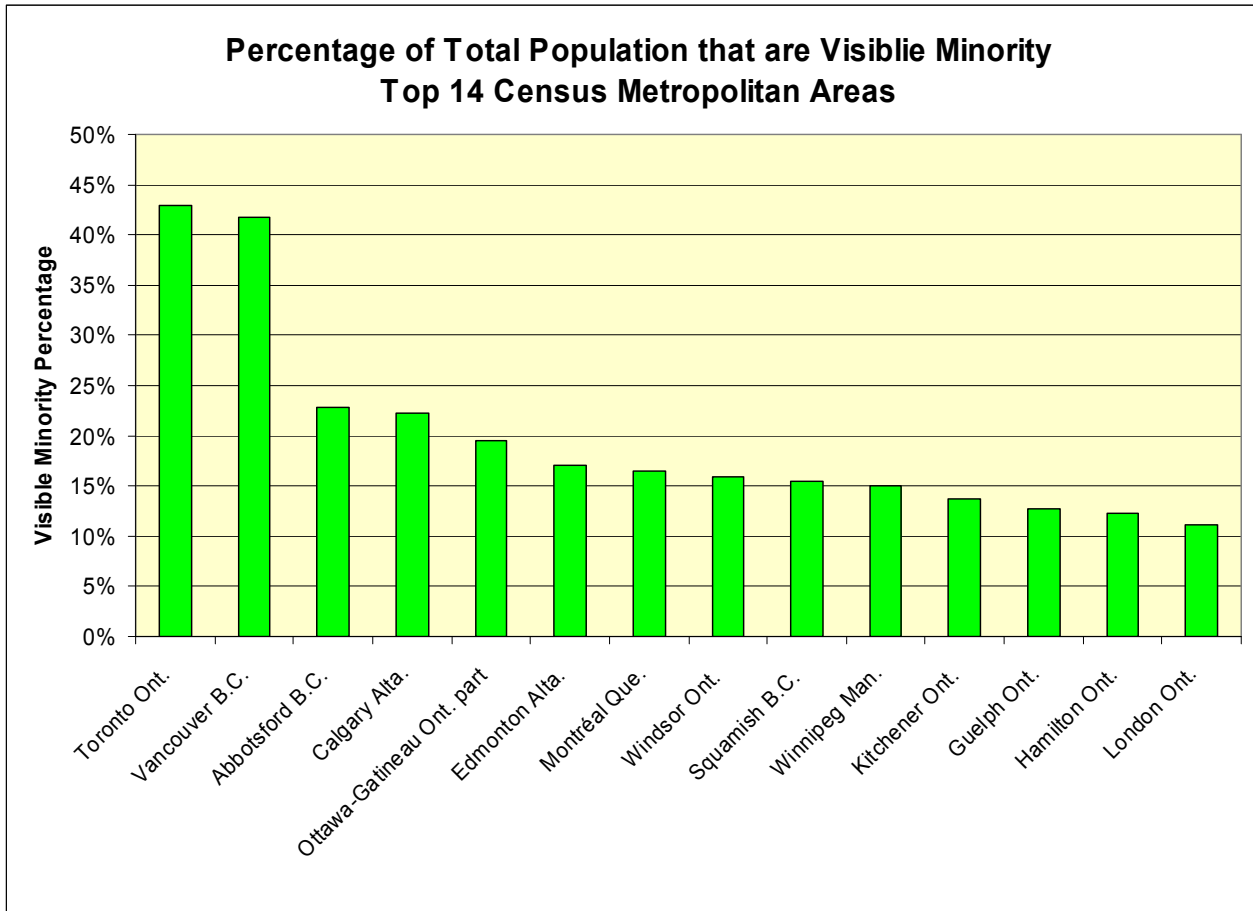
*Ethnic Origin:* Refers to the ethnic or cultural origins of the respondent's ancestors. It should be noted that over time, there have been differences in the question wording, format, examples and instructions of the ethnic origin question used in the census. The historical comparability of ethnic origin data has thus been affected by these factors, as well as by changes in data processing and the social environment at the time of

the census.

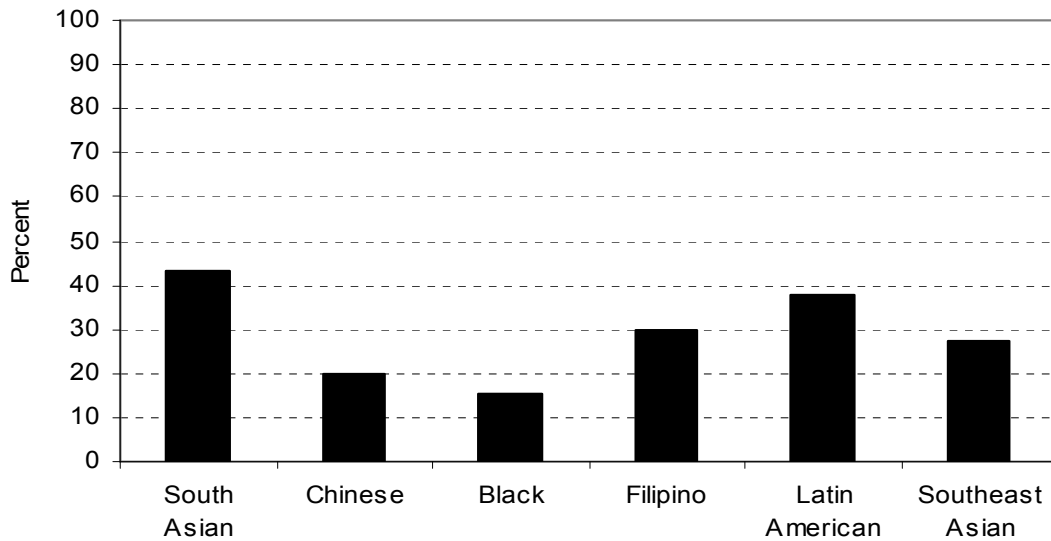
*Visible Minority:* Refers to the visible minority group to which the respondent belongs. The Employment Equity Act defines visible minorities as 'persons, other than Aboriginal peoples, who are non-Caucasian in race or non-white in colour'.

**More Releases**

This is the seventh release of data from the 2006 Census. Data on “Income and Earnings, Housing and Shelter Costs” will be released on May 1, 2008.



### Ontario Change in Visible Minorities 2001 to 2006 Census

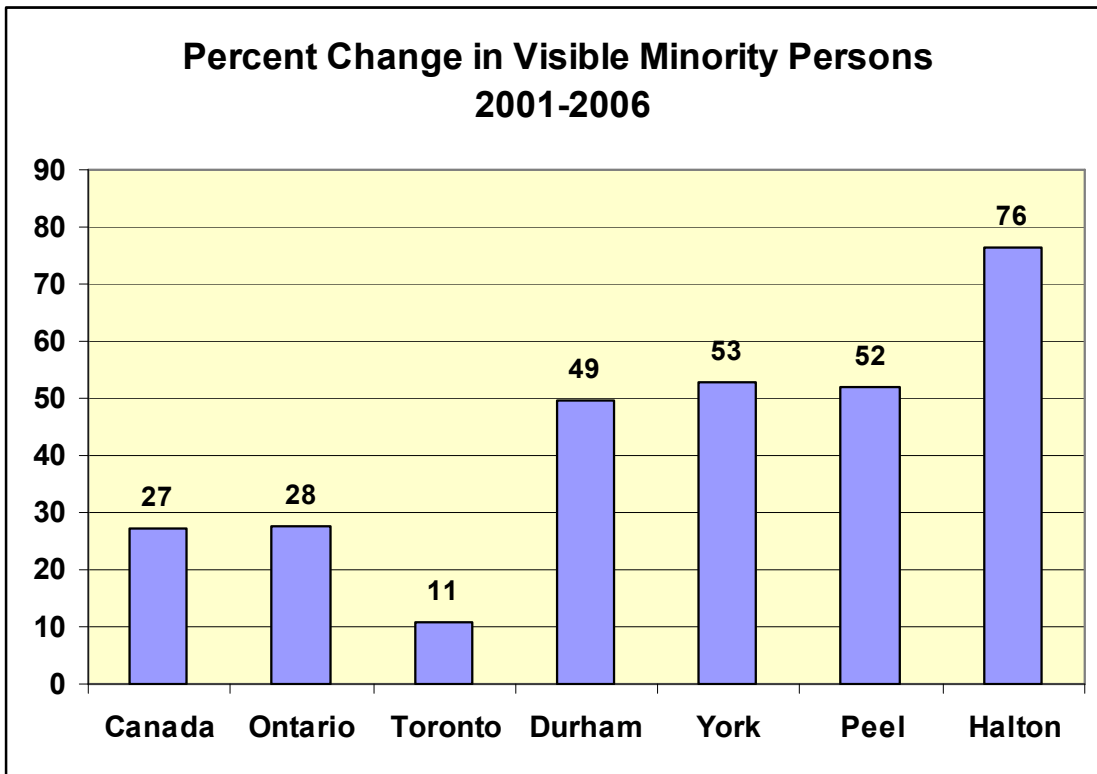


#### Population by Visible Minority Status, 2006

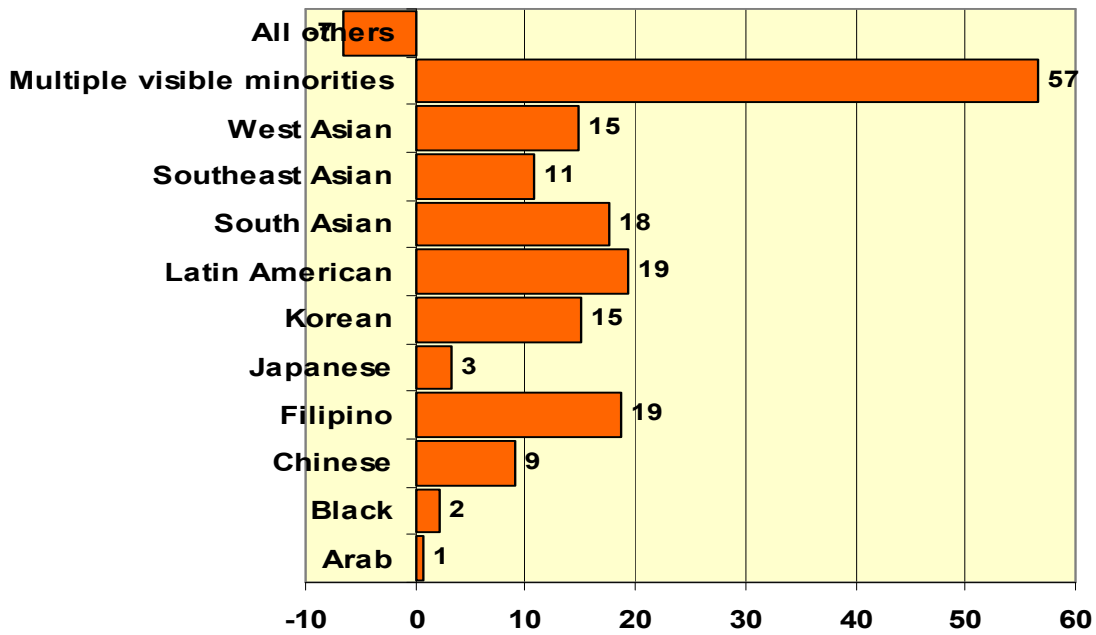
	Canada	Ontario	GTA	Toronto	RGTA
Total population	31,241,030	12,028,895	5,510,705	2,476,565	3,034,140
Visible minority population	5,068,090	2,745,200	2,220,030	1,162,630	1,057,400
Arab/West Asian	422,250	208,020	132,620	65,245	67,375
Arab	265,550	111,405	55,600	22,490	33,110
Black	783,795	473,760	366,295	208,555	157,740
Chinese	1,216,565	576,980	492,150	283,070	209,080
Filipino	410,695	203,220	174,715	102,555	72,160
Japanese	81,300	28,080	20,055	11,965	8,090
Korean	141,895	69,540	56,370	34,215	22,155
Latin American	304,245	147,135	101,715	64,855	36,860
South Asian	1,262,865	794,170	694,410	298,375	396,035
Southeast Asian	239,935	110,045	71,315	37,495	33,820
West Asian	156,700	96,615	77,020	42,755	34,265
Visible minority, n.i.e.	71,420	56,845	48,220	25,195	23,025
Multiple visible minorities	133,120	77,400	62,130	31,100	31,030
All others	26,172,935	9,283,690	3,290,670	1,313,935	1,976,735

	Canada	Ontario	GTA	Toronto	RGTA
Total population	100.0	100.0	100.0	100.0	100.0

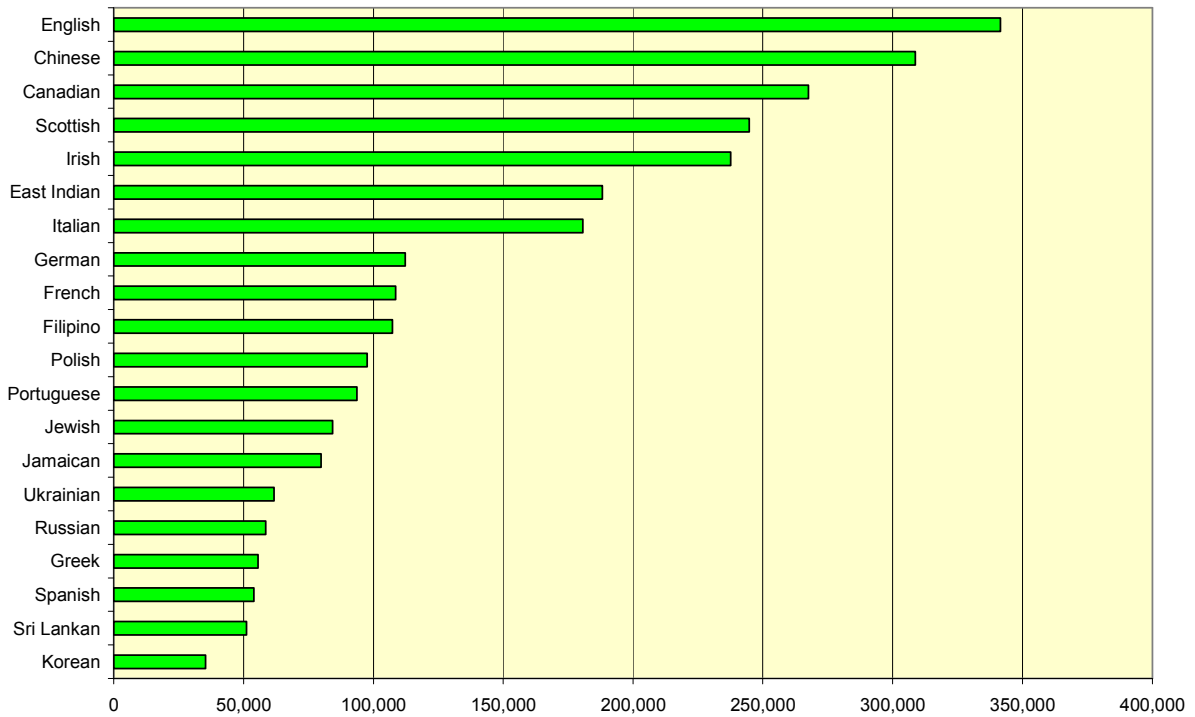
Visible minority population	16.2	22.8	40.3	46.9	34.9
Arab/West Asian	1.4	1.7	2.4	2.6	2.2
Arab	0.9	0.9	1.0	0.9	1.1
Black	2.5	3.9	6.6	8.4	5.2
Chinese	3.9	4.8	8.9	11.4	6.9
Filipino	1.3	1.7	3.2	4.1	2.4
Japanese	0.3	0.2	0.4	0.5	0.3
Korean	0.5	0.6	1.0	1.4	0.7
Latin American	1.0	1.2	1.8	2.6	1.2
South Asian	4.0	6.6	12.6	12.0	13.1
Southeast Asian	0.8	0.9	1.3	1.5	1.1
West Asian	0.5	0.8	1.4	1.7	1.1
Visible minority, n.i.e.	0.2	0.5	0.9	1.0	0.8
Multiple visible minorities	0.4	0.6	1.1	1.3	1.0
All others	83.8	77.2	59.7	53.1	65.1

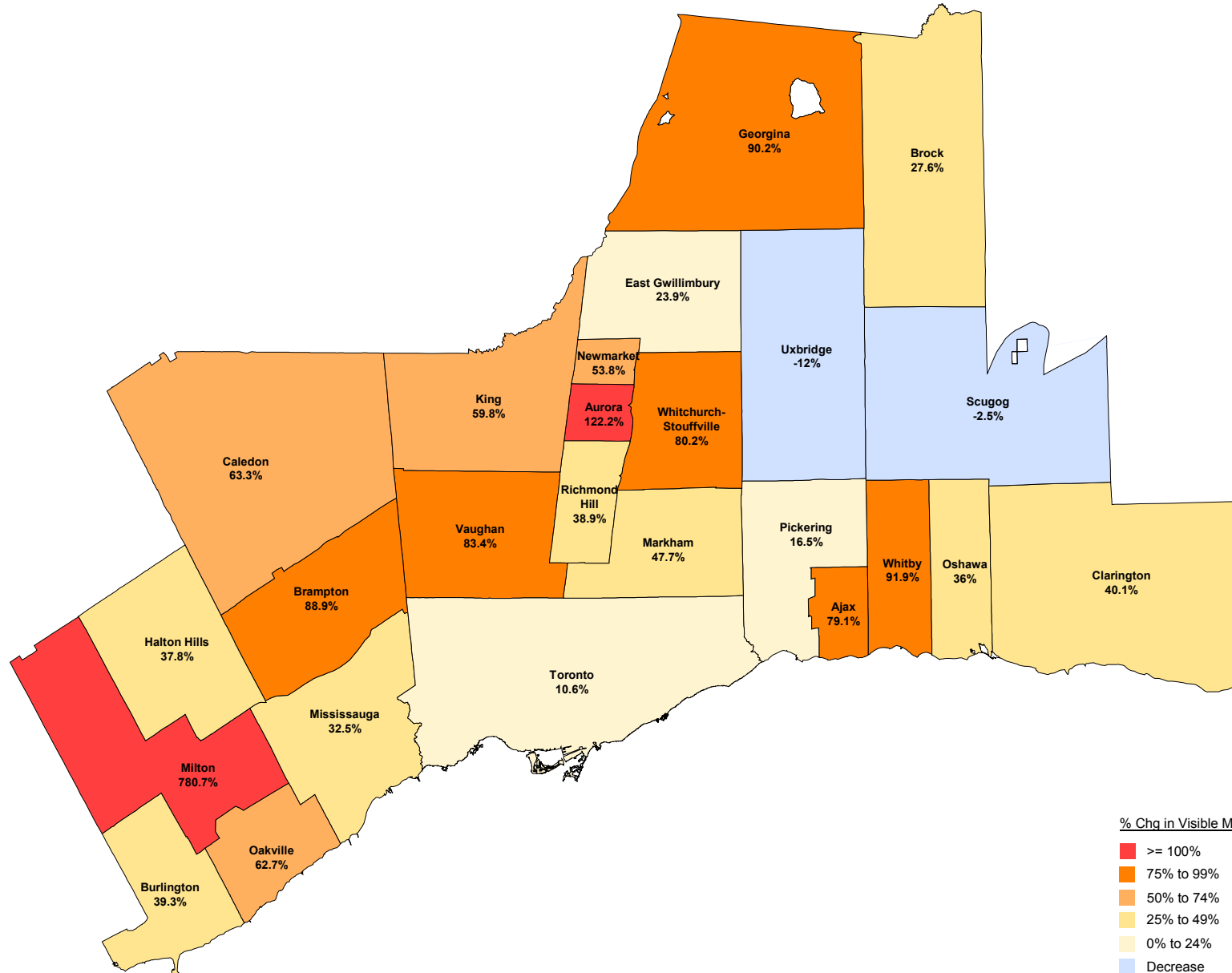


### Percent Change in Visible Minority Persons City of Toronto 2001-2006



### Top 20 Ethnic Origins City of Toronto 2006 Census





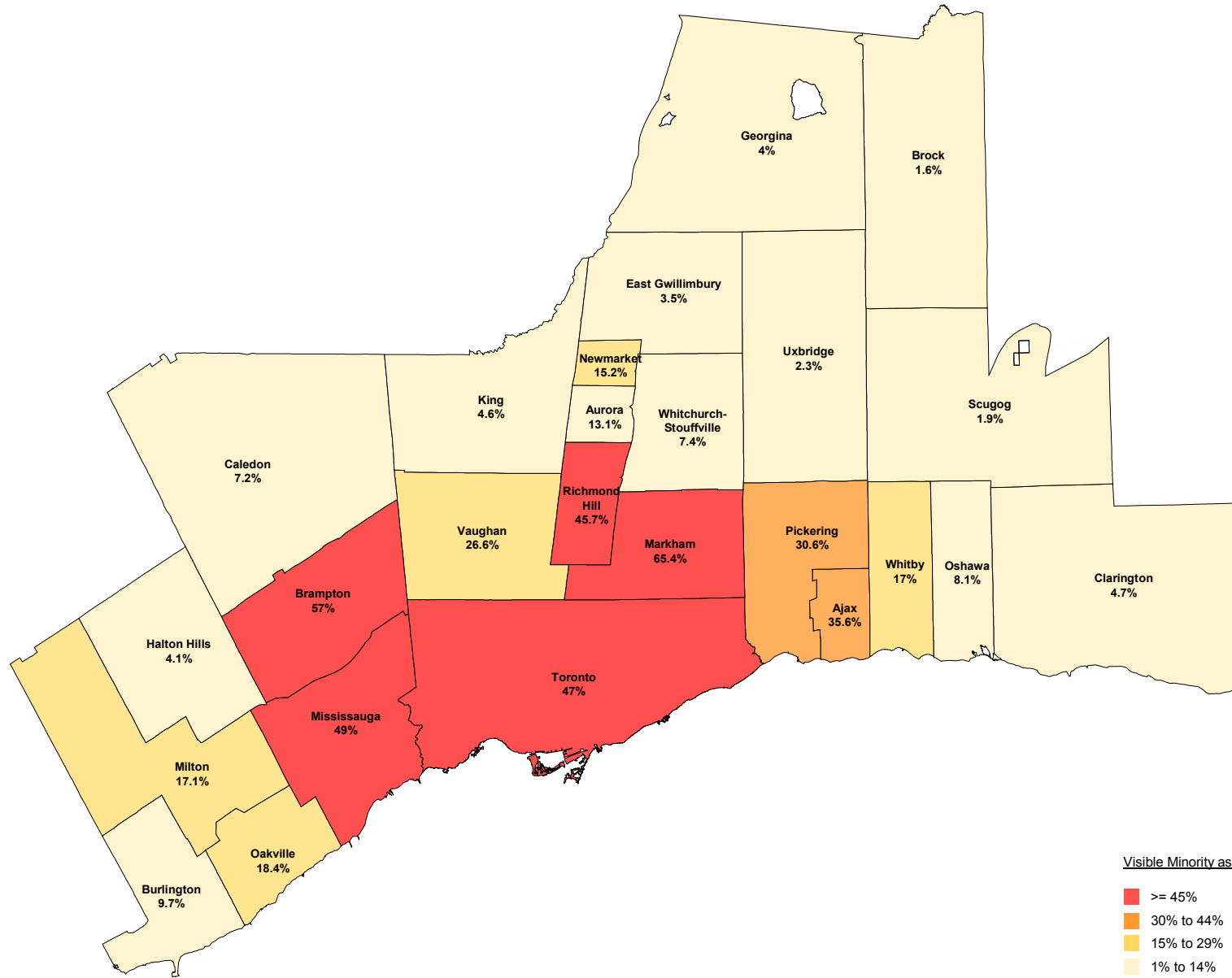
**% Chg in Visible Minority Population**

- >= 100% (2)
- 75% to 99% (6)
- 50% to 74% (4)
- 25% to 49% (8)
- 0% to 24% (3)
- Decrease (2)

■ Primarily Non-Residential Areas

Source: Statistics Canada - 2006 Census.



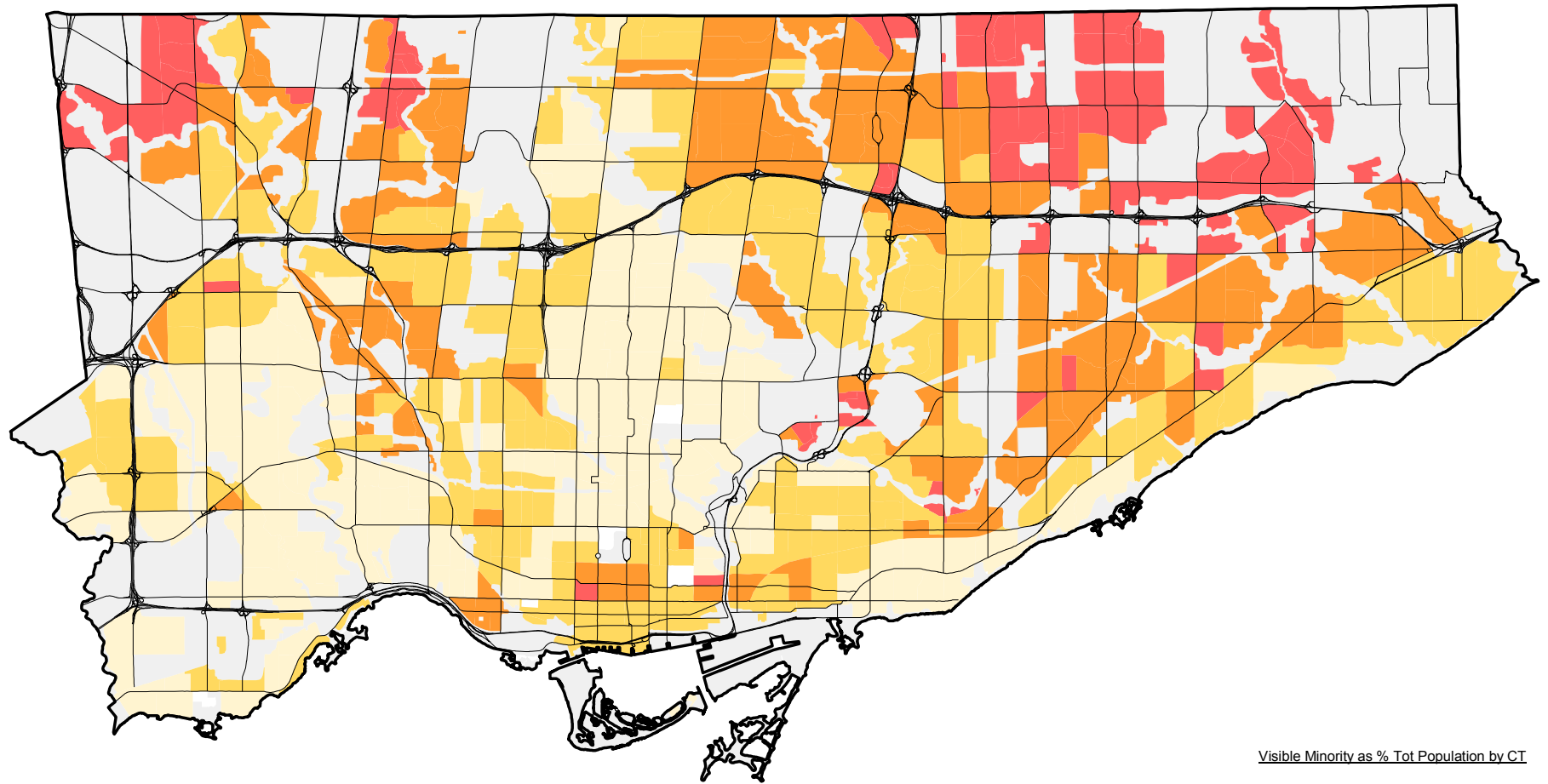


Visible Minority as % Tot Population

- >= 45% (5)
- 30% to 44% (2)
- 15% to 29% (5)
- 1% to 14% (13)
- Primarily Non-Residential Areas

Source: Statistics Canada - 2006 Census.



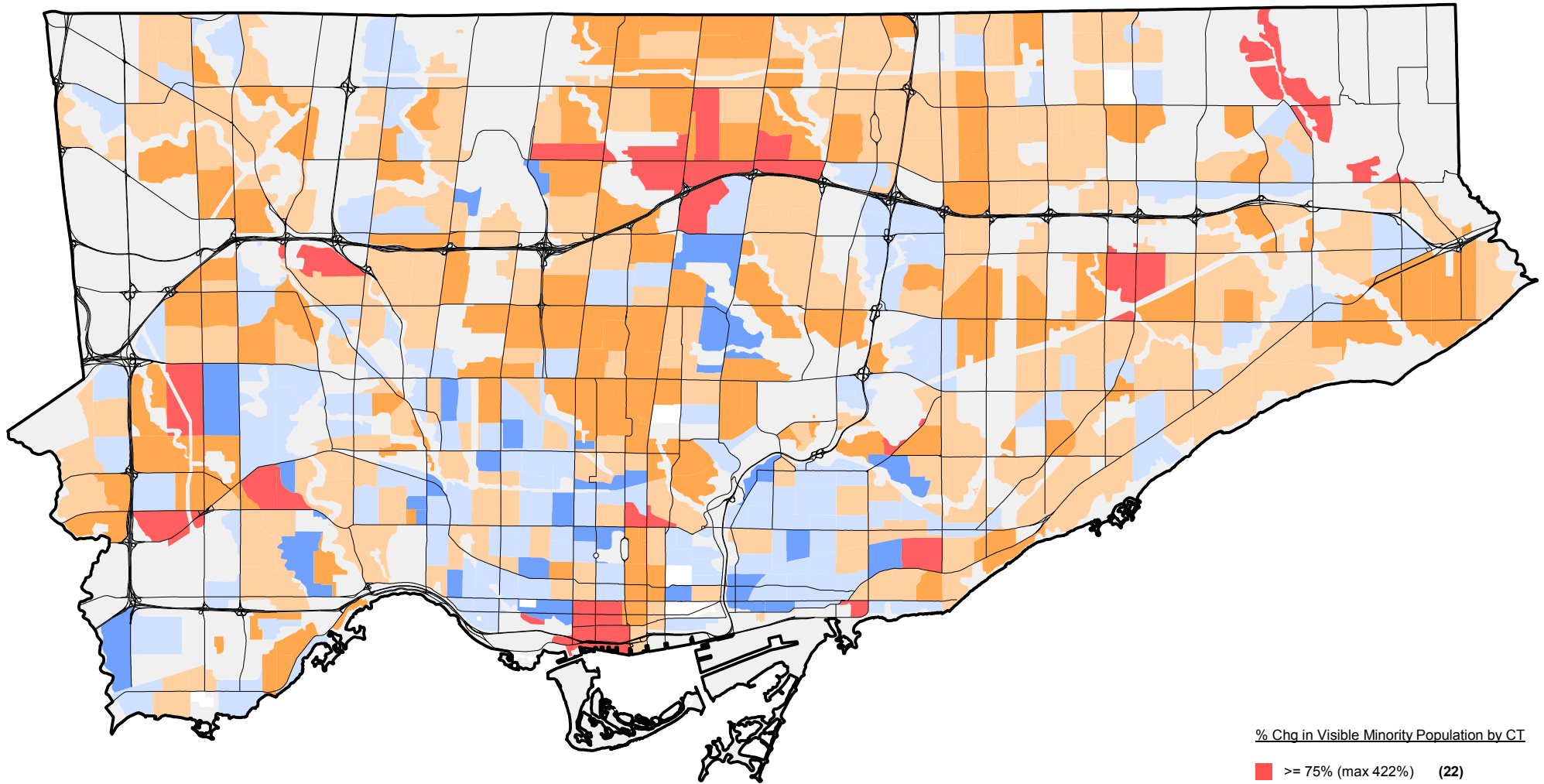


Visible Minority as % Tot Population by CT

<span style="color: red;">■</span>	>= 75%	(79)
<span style="color: orange;">■</span>	50% to 74%	(133)
<span style="color: yellow;">■</span>	25% to 49%	(164)
<span style="color: lightyellow;">■</span>	1% to 24%	(143)
<span style="color: grey;">■</span>	Primarily Non-Residential Areas	

Source: Statistics Canada - 2006 Census.





% Chg in Visible Minority Population by CT

<span style="color: red;">■</span>	>= 75% (max 422%)	(22)
<span style="color: orange;">■</span>	20% to 74%	(120)
<span style="color: lightorange;">■</span>	0% to 19%	(204)
<span style="color: lightblue;">■</span>	0% to -19%	(141)
<span style="color: blue;">■</span>	< 20% (min -100%)	(30)
<span style="color: grey;">■</span>	Primarily Non-Residential Areas	

Source: Statistics Canada - 2006 Census.



**Prepared by:**

Social Policy Analysis and Research Section,  
Social Development Finance & Administration Division

Diversity management & Community Engagement Section,  
Strategic & Corporate Policy Division

Policy & Research Section,  
City Planning Division

**Contact for further information:**

Rose Lee, Coordinator – Diversity Management, Strategic & Corporate Policy Division , 416-392-4991  
Harvey Low, Planning Analyst, Social Development Finance & Administration Division, 416-392-8660

Date: April 2, 2008