



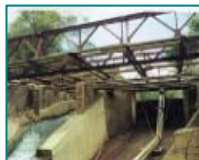
Your tour includes:

transportation between sites as well as light breakfast at "The Boyne" and lunch at "Pine River"

\$25.00 per person, refundable deposit
(PAYABLE BY MAY 21, 2004)

**FOR TOUR RESERVATIONS
PLEASE CONFIRM WITH**

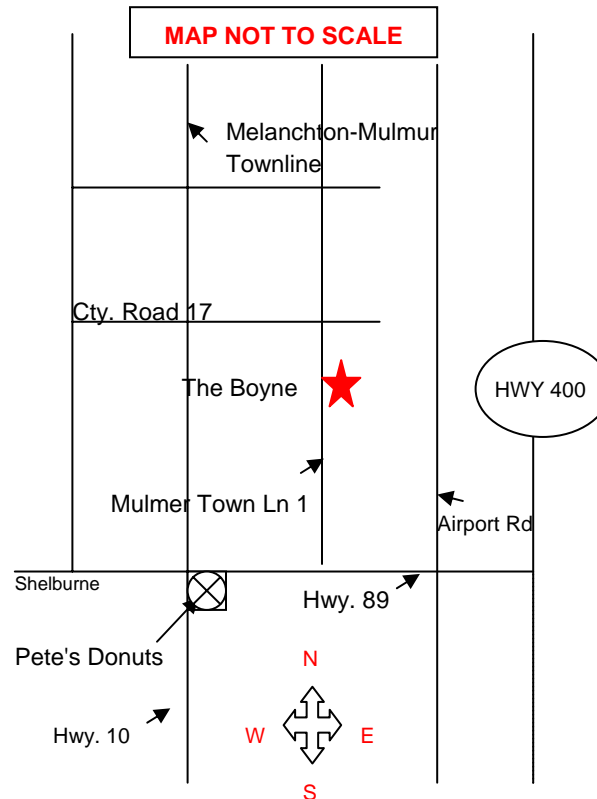
**MUNSHU WONG
TDSB REAL ESTATE
3RD FLOOR
1 CIVIC CENTRE COURT
TORONTO, ON M9C 2B3
416-394-3952
munshu.wong@tdsb.on.ca**



**** PLEASE MAKE CHEQUES PAYABLE TO**

"TORONTO DISTRICT SCHOOL BOARD"

DIRECTIONS TO "THE BOYNE"



- Hwy 400 to Hwy 89
- West on Hwy 89 past Airport Road
- To Mulmur Township Line #1
- Turn North on Mulmur Township Line #1
- Travel approx. 4 km north
- The "Boyne" site has gated entrance on east side
- Follow road to main building

IF YOU HAVE ANY DIFFICULTY FINDING "THE BOYNE" PLEASE CALL:

BILL: 416-434-9751



**PLEASE JOIN US FOR
A SPECIAL TOUR OF 3
OUTDOOR EDUCATION SITES**

now available for filming...



Boyne River Natural Science School



Pine River Outdoor Education School



& Noisy River Education Centre

**WEDNESDAY, MAY 26, 2004
10:00 A.M. SHARP
AT "THE BOYNE"**

PICTURE PERFECT SETTINGS

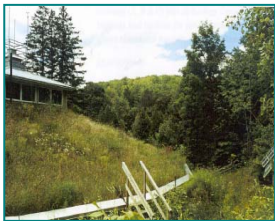
THE BOYNE RIVER NATURAL SCIENCE SCHOOL



402 Acres of picturesque, undeveloped, open and wooded lands, forming part of the Niagara Escarpment, along the shores of the Boyne River.

Amenities include:

- 45,000 sq. ft. main building with dormitory wings
- 5,594 sq. ft. Ecology Centre
- pole barn, sugar shack
- rustic log cabin
- full service cafeteria and servery
- archery range



Forest glades



THE PINE RIVER OUTDOOR EDUCATION SCHOOL



199 Acres natural setting encompassing both hilltop and valleylands in a rolling, scenic topography; also forms part of the Niagara Escarpment.

Amenities include:

- 15,000 sq. ft. main building with dormitories, classrooms, etc.
- 612 sq. ft. pavilion (classroom/lunchroom)
- 5 outdoor cabin bunk rooms
- Circa 1877 log cabin
- full service cafeteria and servery



wide open spaces ...

THE NOISY RIVER EDUCATION CENTRE



100 Acres of rolling tablelands and valley lands with some hardwood forest areas northeast of Shelburne with little light pollution - perfect for stargazing.

Amenities include:

- 780 sq. ft. portable
- adjoining showers
- 1,000 sq. ft. workshed
- 864 sq. ft. dining shelter
- silo rock climbing facility
- aerial rope course
- wooden frame tent platforms



and much more