

SUBMISSIONS | STUDENT PROJECTS

Project Title

Re-Visioning: Toronto's East Employment Lands

Address/Site

629, 633 & 675 Eastern Avenue, East Edge Precinct

Student Name

Neluka Leanlage

University

University of Toronto



2009

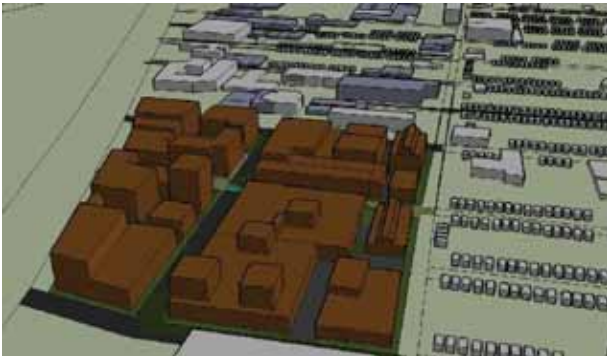
SUBMISSIONS | STUDENT PROJECTS

Project Title

Re-Visioning: Toronto's East Employment Lands

Address/Site

629, 633 & 675 Eastern Avenue, East Edge Precinct



The new vision and design for the Toronto Film Studios (and adjacent properties) site evolved as part of a larger precinct plan for employment lands east of Toronto's Don River. This plan conforms presents a bold, coherent alternative for lands that have recently attracted attention from large-format retailers.

"Re-visioning" involves looking forward and looking back, re-connecting to existing community and creating new, complimentary, functions for derelict spaces. The intent is to reclaim an industrial brownfield to showcase innovative businesses within a freshly re-integrated urban employment grid connected to neighbourhoods and natural heritage via new public spaces. The result offers a gateway to places north and south of Lakeshore Boulevard in a place that is currently blighted and impenetrable.

The plan for the East Employment Lands comprises a series of investments in street, transit, environmental and building infrastructure to create an economic cluster of green, creative, connected and mixed enterprises.

2009