

# SUBMISSIONS | ELEMENTS

## Allstream Centre City of Toronto and Exhibition Place

105 Princes' Blvd., Toronto, ON

### Project Team

NORR Limited Architects and Engineers

*Heritage Consultants:*

Andre Scheinman Heritage Preservation

E.R.A. Architects Inc.,

Jame Bailey Architects

### Developer/Owner/Client

Exhibition Place



2011

Toronto Urban Design Awards

TORONTO

# SUBMISSIONS | ELEMENTS

## Allstream Centre City of Toronto and Exhibition Place

105 Princes' Blvd., Toronto, ON



The north entrance of the Automotive building at Exhibition Grounds has been the victim of unsympathetic appliqués over the years. The arched openings were filled in and a steel signage superstructure added.

As part of the rehabilitation of the facility from exhibition to convention, the exterior plaza was regraded and the internal floor levels lowered to achieve a low slope entry required for barrier free access. The glass infill panels were removed along with the steel structure. The historical drawings were used as the basis for the reconstruction of the original porch. The original light fixtures were removed and restored and missing fixtures recreated. The parapet was taken down reinforced and reconstructed. Damaged stone was repaired.

The result is that a lost exterior porch has been returned to the public realm and a historic building has been rehabilitated and returned to its previous glory.

2011

Toronto Urban Design Awards

# SUBMISSIONS | ELEMENTS

## Bloor St. Transformation Plantings

along Bloor St. from Yonge St.  
to Church St.

### Project Team

Design:

PMA Landscape Architects

Installation:

ALC Landscape Maintenance

### Client

Bloor Yorkville

Business Improvement Area (BIA)



2011

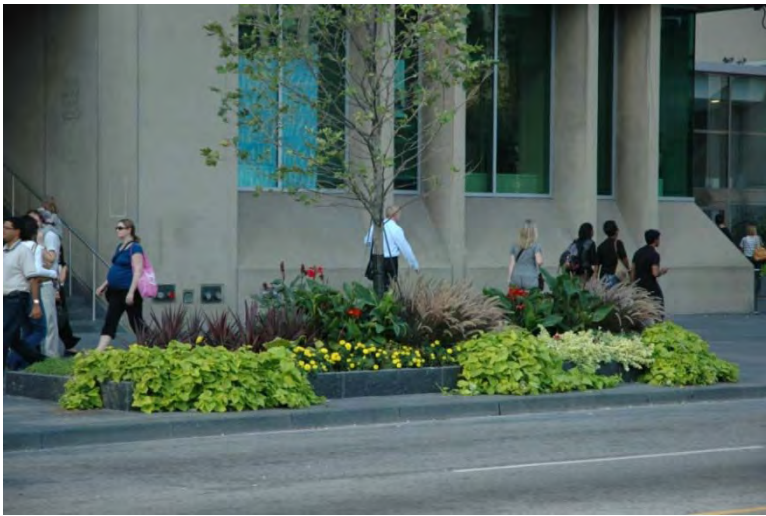
Toronto Urban Design Awards

TORONTO

# SUBMISSIONS | ELEMENTS

## Bloor St. Transformation Plantings

Along Bloor St. from Yonge St. to Church St.



The intent for the Bloor Street Transformation Plantings was to apply a signature series of plantings along the length of Bloor Street. Achieving a visual coherence for the entire length of the street was the primary design objective.

Secondly, the planting scheme aspired to provide an aesthetic respite where the everyday pedestrian can find a hospitable moment amidst the urban cacophony that previously defined the street.

To that end, the plantings were designed to mirror the elegance of the granite used for the newly installed granite pavers, planters and benches.

Echoing the granite, the overall structure of the plantings is architecturally strong. The planting palette is complex consisting of foliage plants that vary in texture, form, height, shape and colour.

Flowering plants were used sparingly, primarily to punch out the chiaroscuro effect found in the contrasting light and dark foliage.

2011

Toronto Urban Design Awards

TORONTO

# SUBMISSIONS | ELEMENTS

## Stantec Window Gallery

24 Spadina Avenue

### Project Team

Michael Moxam, Principal-in-Charge

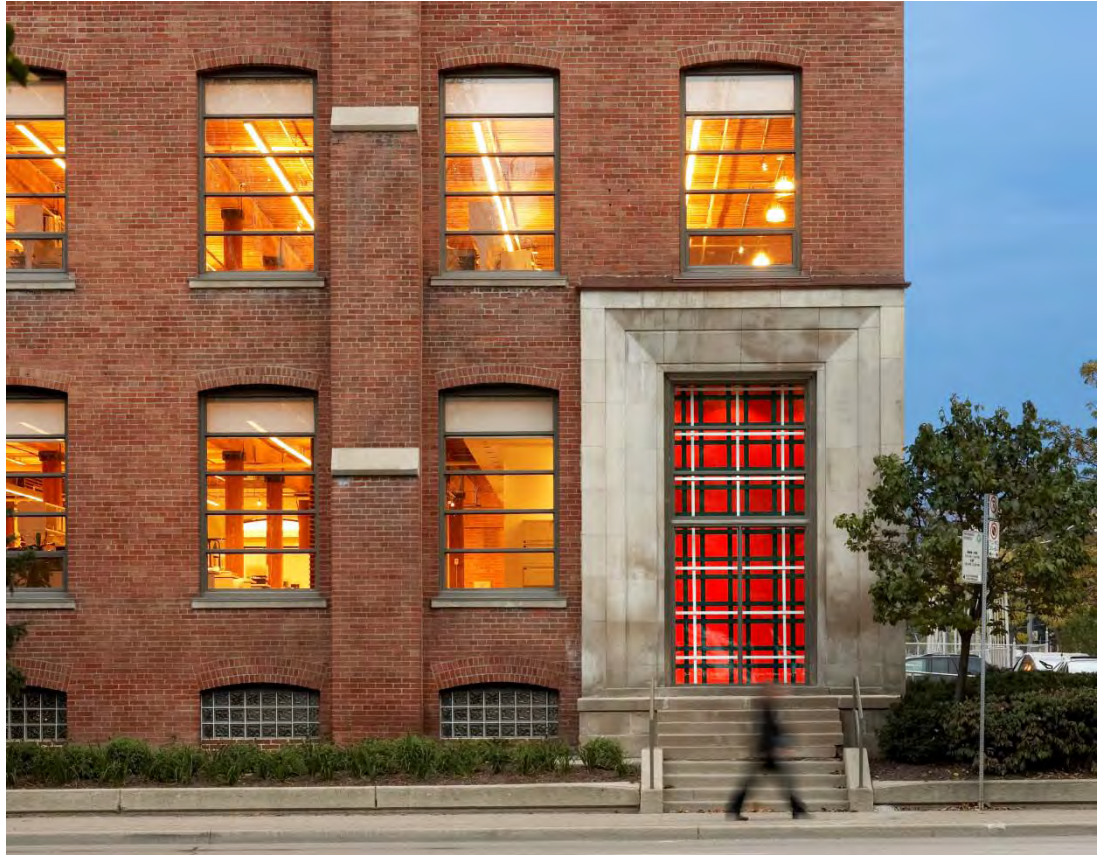
Dathe Wong, Project Architect

Timothy Belanger, Curator

Ruth Mora, Curator

### Developer/Owner/Client

Stantec Architecture Ltd.



2011

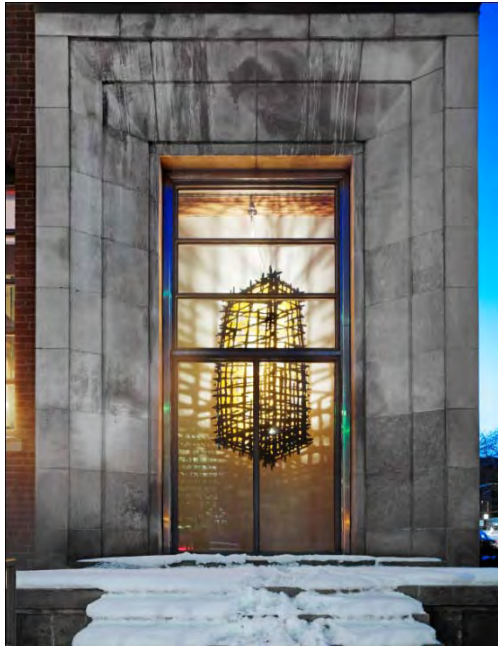
Toronto Urban Design Awards

TORONTO

# SUBMISSIONS | ELEMENTS

## Stantec Window Gallery

24 Spadina Avenue



Formerly the home of the McGregor Sock Factory, the Stantec Window Gallery is located in Toronto's historic Garment District at the corner of Spadina Avenue and Wellington Street West. In an effort to 'give back' to the city; economically, environmentally and culturally; apart of the office retrofit, the original retail entrance to the McGregor Sock Factory was reconceived as a contemporary art gallery to be open and experienced by all: pedestrians, cyclists, drivers, streetcar riders, skateboarders and vampires, free of charge. Installations rotate on a quarterly basis, on the solstice and equinox. Curated and sponsored by the office, artists are provided with subsidized funding needed to create their installation.

2011

Toronto Urban Design Awards

# SUBMISSIONS | ELEMENTS

## Colonel Samuel Smith Skate Trail

Lakeshore Blvd W., Etobicoke  
(65 Colonel Samuel Smith Park Dr.)

### Project Team

Lead Designer: PMA Landscape Architects  
Mechanical/Electrical: Aldworth Engineering  
Electrical: MJS Consultants Inc.  
Audio: Dave Clark Consulting  
Arborist: Urban Forest Associates

### Client

City of Toronto



2011

Toronto Urban Design Awards

 TORONTO

# SUBMISSIONS | ELEMENTS

## Colonel Samuel Smith Skate Trail

Lakeshore Blvd. W., Etobicoke



Toronto's first skate-trail opened in December 2010. Located in the west end at Colonel Sam Smith Park, it is an artificially refrigerated 250-metre long, figure-eight trail that is anchored by a circular practice area.

The existing Power House building has been retrofitted to provide a warm place for lacing-up and to house the refrigeration system and Zamboni. During the temperate months, the surface can be used for roller-blading. Lighting extends the use beyond nightfall, and a sound system adds to the atmosphere.

The Park's well-known biodiversity was considered from the outset. Tree preservation, wildlife habitat creation & the development of distinct native plant communities were integral to the trail design. The northern part of the site is planted with successional species and functions as a flyway for migrating birds. The east meadow consists of species selected to attract butterflies & the plantings found at the south wetland are indigenous to the shores of Lake Ontario.

2011

Toronto Urban Design Awards

# SUBMISSIONS | ELEMENTS

## Humber Centre for Justice Leadership

3120 Lake Shore Boulevard West  
Toronto, Ontario

### Project Team

Gow Hastings Architects:  
Philip Hastings, Valerie Gow,  
Jim Burkitt, David Colussi,  
Janice Lee, Julian Ocampo,  
Richard D'Alessandro, Dan Malka

### Developer/Owner/Client

Humber College Institute of Technology  
and Advanced Learning



2011

Toronto Urban Design Awards

TORONTO

# SUBMISSIONS | ELEMENTS

## Humber Centre for Justice Leadership

3120 Lake Shore Boulevard West  
Toronto, Ontario



Faceted and fissured, this perforated metal screen shrouds a former car dealership to transform the building into a school for police sciences. Inspired by the nature of the school's activities, the mesh facade re-presents the building with an appropriately alluring and discrete appearance —without relying on a new skin. It also provides a new focal point to the otherwise nondescript street.

A vertical garden cascades through the screen, and is visible through large fissures. The planting provides a lush, natural contrast to the screen's sculptural form and to the street's harsh paving. It also gestures to the city park across the street. The 'double façade' lets in lots of natural light while softening the bright light that previously permeated the large showroom windows. After dark, a large LED sign projecting Humber's wordmark from behind the screen radiates an ambient glow— providing both drama and safety to the surrounding area.

2011

Toronto Urban Design Awards

# SUBMISSIONS | ELEMENTS

## The Annex Retirement Residence

123 Spadina Road, Toronto

### Project Team

Gotfryd Group, landscape architects, applied ecologists,  
land planners, design consultants

Shahram Talebi, P.Eng

Derek Pharant, P. Eng

Renaissance Construction Group Inc.

Roberts Awnings and Signs

### Developer/Owner/Client

Revera Living Inc.



2011

Toronto Urban Design Awards

TORONTO

# SUBMISSIONS | ELEMENTS

## The Annex Retirement Residence

123 Spadina Road, Toronto



The new owners of 123 Spadina Road were committed to upgrading their retirement facility's image in the community. Addressing the exterior landscape, this was achieved by beautifying the streetscape and creating an inviting entrance. Unique in shape, scale, and materials, the steel, aluminum and canvas canopy serves not only as a visual focus, but also embraces and protects the new entrance walk, stairs and handicap ramp. Through its translucent dome, light fills the space, creating an airy, yet intimate environment. The semi-circular handicap ramp provides easy and safe access for walkers, wheel chairs, and ambulance cots. Poured concrete planters, ornamental iron railings, cast aluminum light standards, colourful banners, and new plants complete the enhancements.

2011

Toronto Urban Design Awards

 TORONTO

# SUBMISSIONS | ELEMENTS

## Tarragon Theatre Playwright Bench

Tarragon Theatre- Bridgman Ave.,  
south side public way

### Project Team

Andrew Furman

### Developer/Owner/Client

City of Toronto-sidewalk green space



2011

Toronto Urban Design Awards

TORONTO

## Tarragon Theatre Playwright Bench

Tarragon Theatre- Bridgman Ave.  
south side public way



Commemorating the 40<sup>th</sup> anniversary of the Tarragon Theatre, a long bench is divided into four parts, each representing a decade of the Tarragon in the neighbourhood. The strip of green space adjacent to the bench has been treated as a soft edge that mediates the parking lot and railway with the Tarragon Village residential area. The names of all the playwrights over the last 40 years are inscribed on the stainless steel of the wall, contrasting with the reclaimed century brick pavers from the Wychwood Car Barns site, originally used as ballast, now bench walls that shield the user.

# SUBMISSIONS | ELEMENTS

## MaMmaL: A Mobile Media Lab for Regent Park Focus

Regent Park, Toronto, ON

### Project Team

Omar Aljebouri, Natalie Dubois, Avery Guthrie, Silvia Gonzalez, Miriam Ng, Alicia Reinhart, Danielle Sernoskie, Tristan Thom, Prof. Adrian Blackwell (John H. Daniels Faculty of Architecture, Landscape & Design)

### Developer/Owner/Client

Regent Park Focus Youth Media Arts Centre



2011

Toronto Urban Design Awards

TORONTO

# SUBMISSIONS | ELEMENTS

## MaMmaL: A Mobile Media Lab for Regent Park Focus

Regent Park, Toronto, ON



The MML (Mobile Media Lab), designed and built by students in a University of Toronto Master of Architecture studio in collaboration with Regent Park youth, is intended to serve as a vehicle through which Regent Park Focus can transport its media production and presentation activities outside the bounds of its basement headquarters and into the wider community. Operating in manifold mobile and deployment modes and supporting multiple forms of media, the MML allows Regent Park Focus to engage with the public through the appropriation and creation of physical and virtual space. Working with technologies intrinsic not only to media but also to structure and human powered mobility, the project engages at multiple scales, from the circuit board to the urban grid. The MML's pixelated form evokes the digital cloud and underlines the project's ambition to create a spectacle within a neighbourhood in a state of massive change and constant reconfiguration.

2011

Toronto Urban Design Awards

TORONTO

# SUBMISSIONS | ELEMENTS

## Salvation Army Harbour Light

160 Jarvis Street, Toronto

### Project Team

Diamond and Schmitt Architects  
du Toit Allsopp Hillier

### Developer/Owner/Client

The Salvation Army



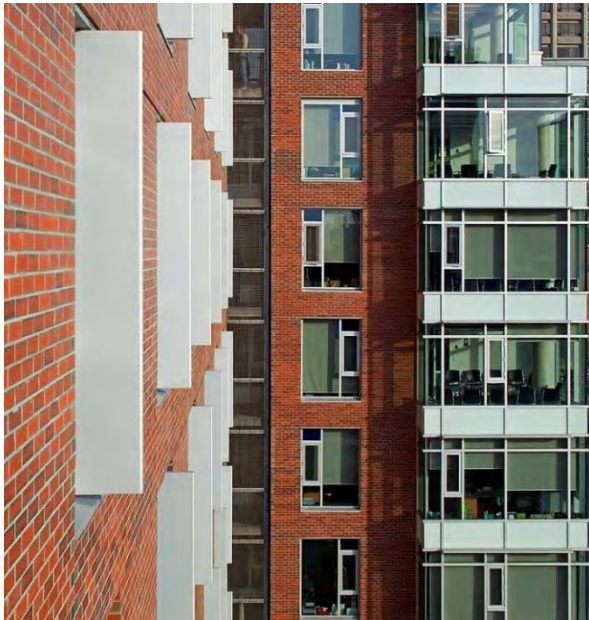
2011

Toronto Urban Design Awards

 TORONTO

## Salvation Army Harbour Light

160 Jarvis Street, Toronto



The Harbour Light is the flagship facility of the Salvation Army in the downtown core of Toronto. It houses a community chapel, a residential addictions recovery program, transitional housing and community & family services.

The majority of the facade is clad in clay brick to symbolize the permanence of the institution and to retain the historic character of Jarvis Street. The high efficiency building envelope combined with solar control, a tempered air system and heat recovery strategies make the building highly energy efficient. Every apartment and office has an operable window. The community chapel sits as an independent volume to the north of the residence wings. It is clad in polycarbonate panels backlit to produce a beacon of light, emblematic of the centre's mandate as a place of hope.

The addition of the Harbour Light Centre has improved the streetscape of Jarvis Street, while serving as a highly visible, socially significant institution.

# SUBMISSIONS | ELEMENTS

## Sherbourne Common Pavilion

51 Dockside Drive, Toronto Waterfront

### Project Team

Teeple Architects Inc.

Stephen Teeple

Bernard Jin

Mark Baechler

Allan Wes Wilson

### Developer/Owner/Client

Waterfront Toronto



2011

Toronto Urban Design Awards

TORONTO

# SUBMISSIONS | ELEMENTS

## Sherbourne Common Pavilion

51 Dockside Drive, Toronto Waterfront



The pavilion sets out to demonstrate that striking sculptural form and good urban design are not antithetical, but complementary. Rather than placing a discreet structure in the new landscape, the new pavilion acts as a grounding marker, an urban connector that straddles the different elements of the park. It marks the intersection of the numerous park programs: The Skating Rink/ Splash Pad, the Water Channel, the Lawn/Outdoor Amphitheater, and the hardscaped Playground.

The project presents a kind of dualism –on one hand, it can be read as an iconic form: an exciting sculpture with an urban backdrop that is experienced from the lake. On the other hand, the pavilion can act as a lens through which the city sees the waterfront: a framed connection between the built urban landscape and Lake Ontario on the horizon.

2011

Toronto Urban Design Awards