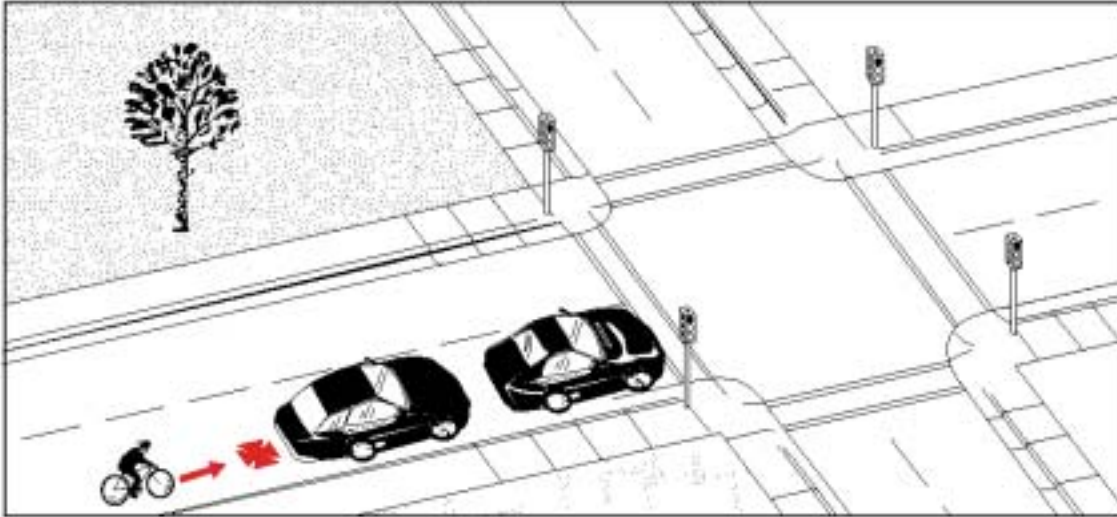


Type 20:

Frequency: 31 cases; 1.3% of all collisions
Severity: No major injuries or fatalities

Cyclist Overtaking Motorist



Description: Both parties were traveling in the same direction. The cyclist was either passing or approaching from the rear.

Environmental Conditions: Weather and light conditions do not appear to have been factors in these crashes.

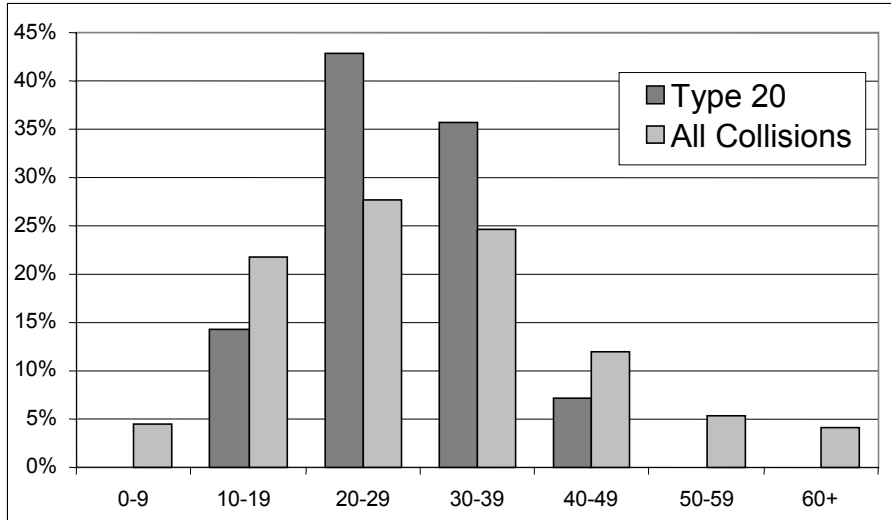
Summary: This type of crash involved mostly adult cyclists (ages 20 to 35). Resulting injuries were slightly more severe than the overall average. Drivers in their thirties may be over-represented.

Note: The small number of cases may reduce the confidence of some statements about this type of crash.

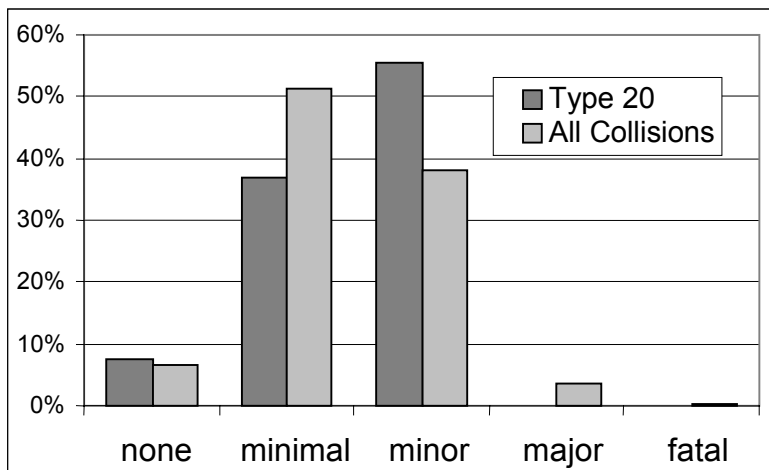
Other Significant Factors:	Type 20	All Collisions
Motorist improper/unsafe lane change	19.4%	2.9%
Cyclist passing on the right	13%	2.5%
Mechanical defect (bicycle)	9.7%	0.6%

Type 20: Cyclist Overtaking Motorist

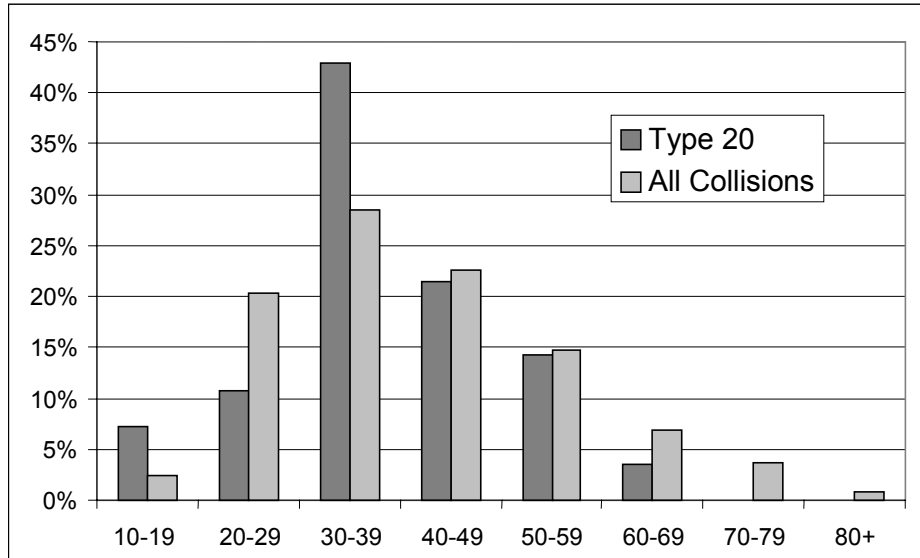
Cyclist's Age



Cyclist's Injuries



Driver's Age



Cyclist Overtaking Motorist 31 Collisions

