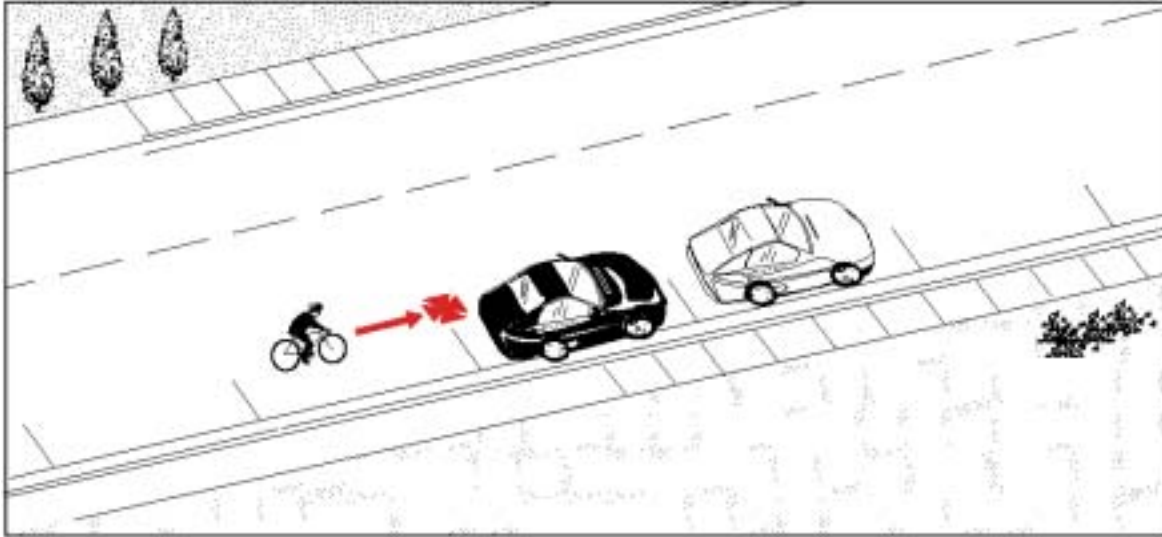


Type 7:

Cyclist Strikes Stopped Vehicle

Frequency: 39 cases; 1.7% of all collisions

Severity: 1 major injury (3% of cases)
No fatalities



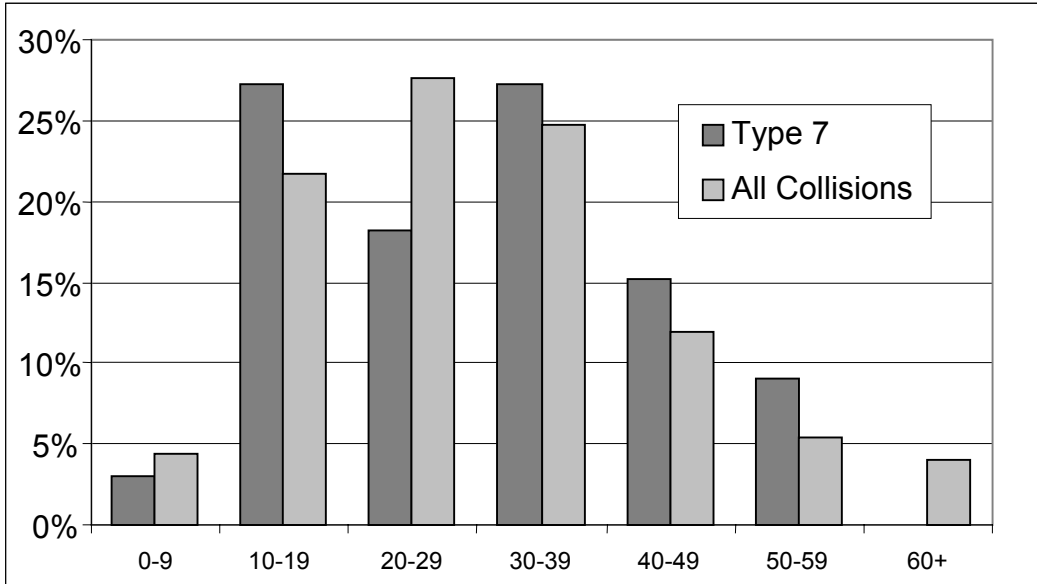
Description: The cyclist crashed into a motor vehicle that was parked or stopped.

Summary: In comparison to all crashes, this type seems to involve more young cyclists (ages 15 to 19). Several of these crashes resulted in no injuries to the cyclist.

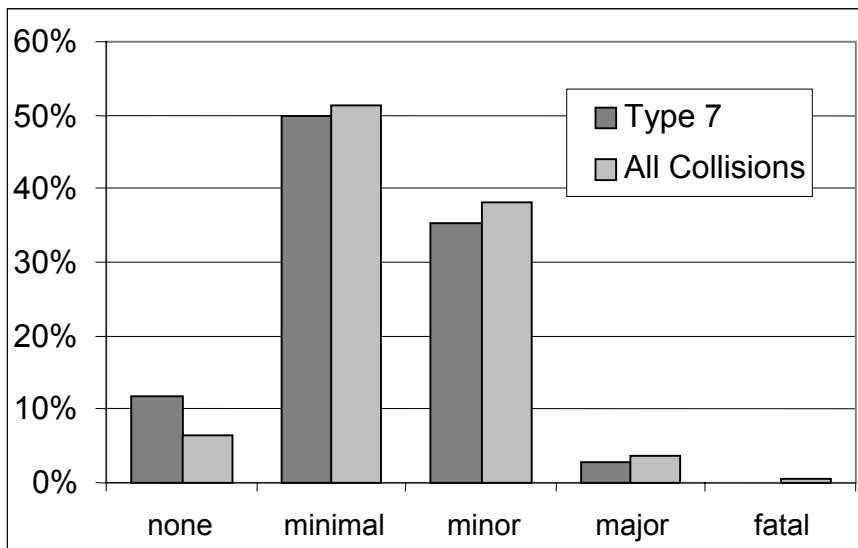
Note: The small number of cases may reduce the confidence of some statements about this type of crash.

Type 7: Cyclist Strikes Stopped Vehicle

Cyclist's Age



Cyclist's Injuries



Cyclist Strikes Stopped Vehicle
39 Collisions

