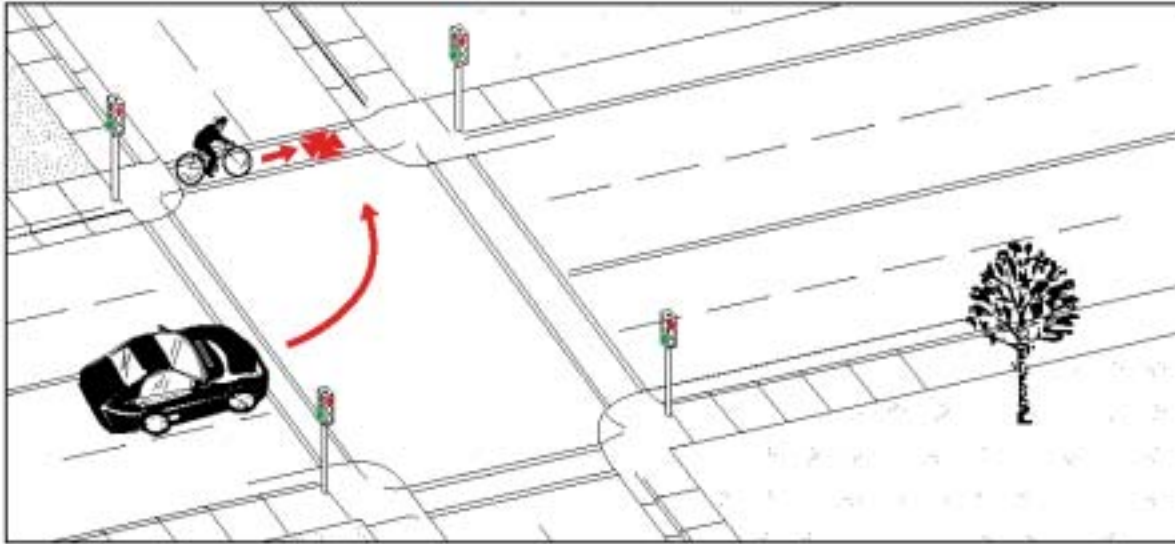


Type 9:

Motorist Left Turn - In Front of Cyclist

Frequency: 48 cases; 2.1% of all collisions
Severity: 2 major injuries (4.3%)
 No fatalities



Description: The motorist made a left turn or merged left in front of a cyclist who was traveling in the same direction.

Summary: This crash type seems to involve more youths (age 10 to 15), and slightly more young adult cyclists than average. Injuries were more severe than average, with only one case resulting in no injuries. Drivers in their twenties were over-represented.

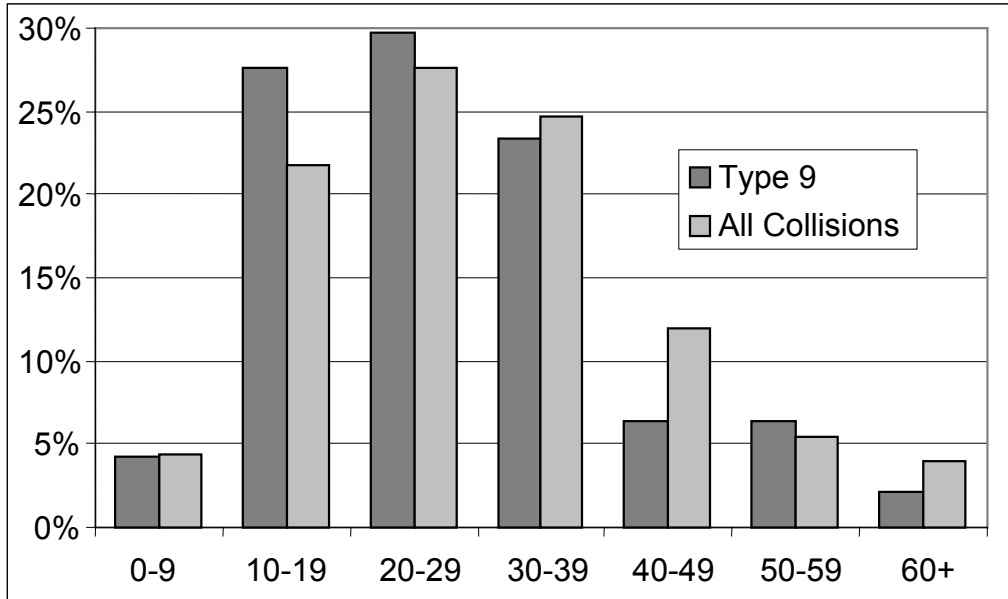
Environmental Conditions: One in three cases took place in darkness. Wet or snowy road conditions appear to be slightly more frequent for this crash type, but this could be a spurious result, due to the small number of cases.

Note: The small number of cases may reduce the confidence of some statements about this type of crash.

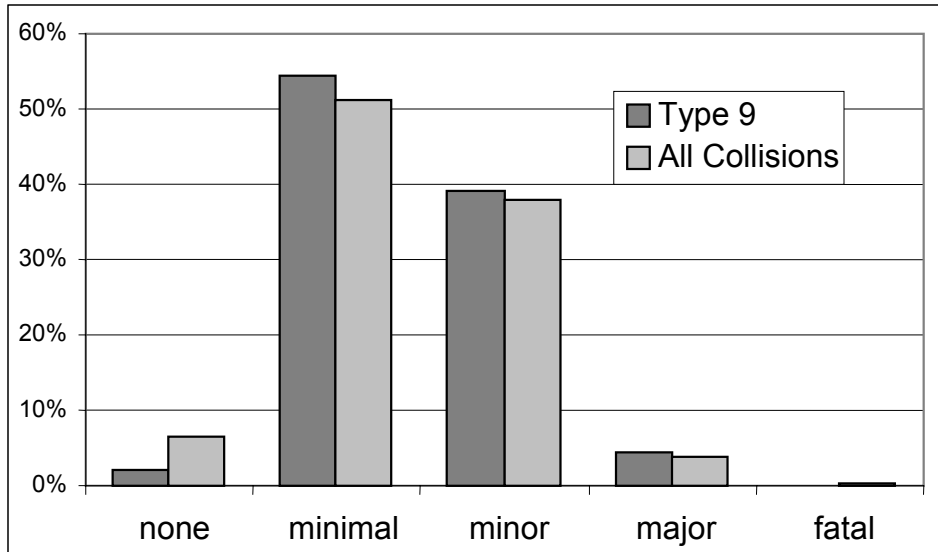
Other Significant Factors:	Type 9	All Collisions
Cyclist riding within crosswalk	48%	30.6%
Darkness	33%	15%
Child cyclist	8.3%	5.7%
Cyclist on wrong side of road	4.2% (2 cases)	1.8%
Motorist unsafe lane change	4.2% (2 cases)	2.9%

Type 9: Motorist Left Turn – In Front of Cyclist

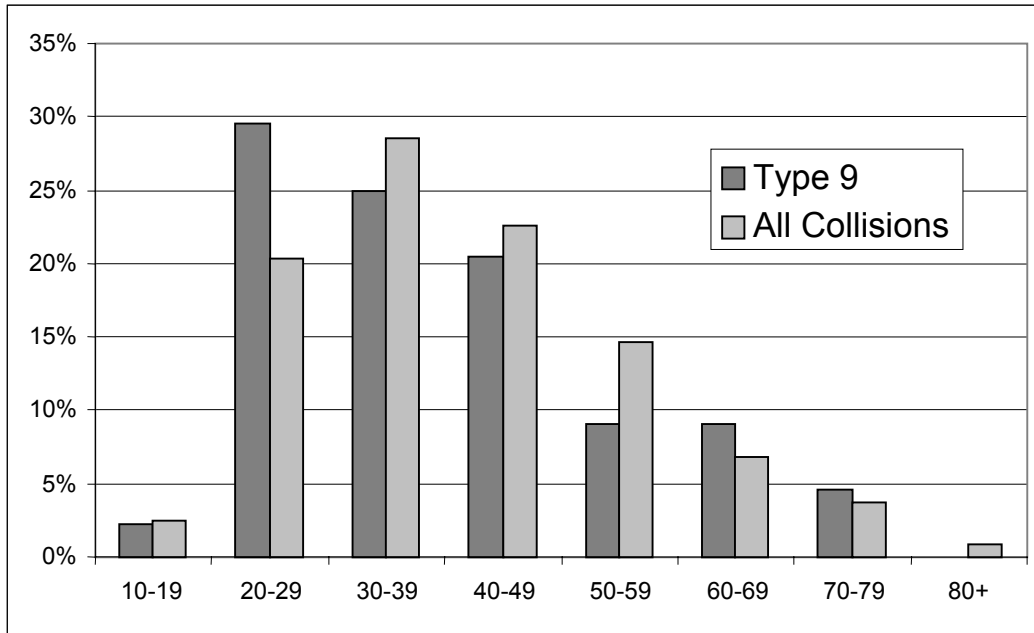
Cyclist's Age



Cyclist's Injuries



Driver's Age



Motorist Left Turn – In Front of Cyclist 48 Collisions

