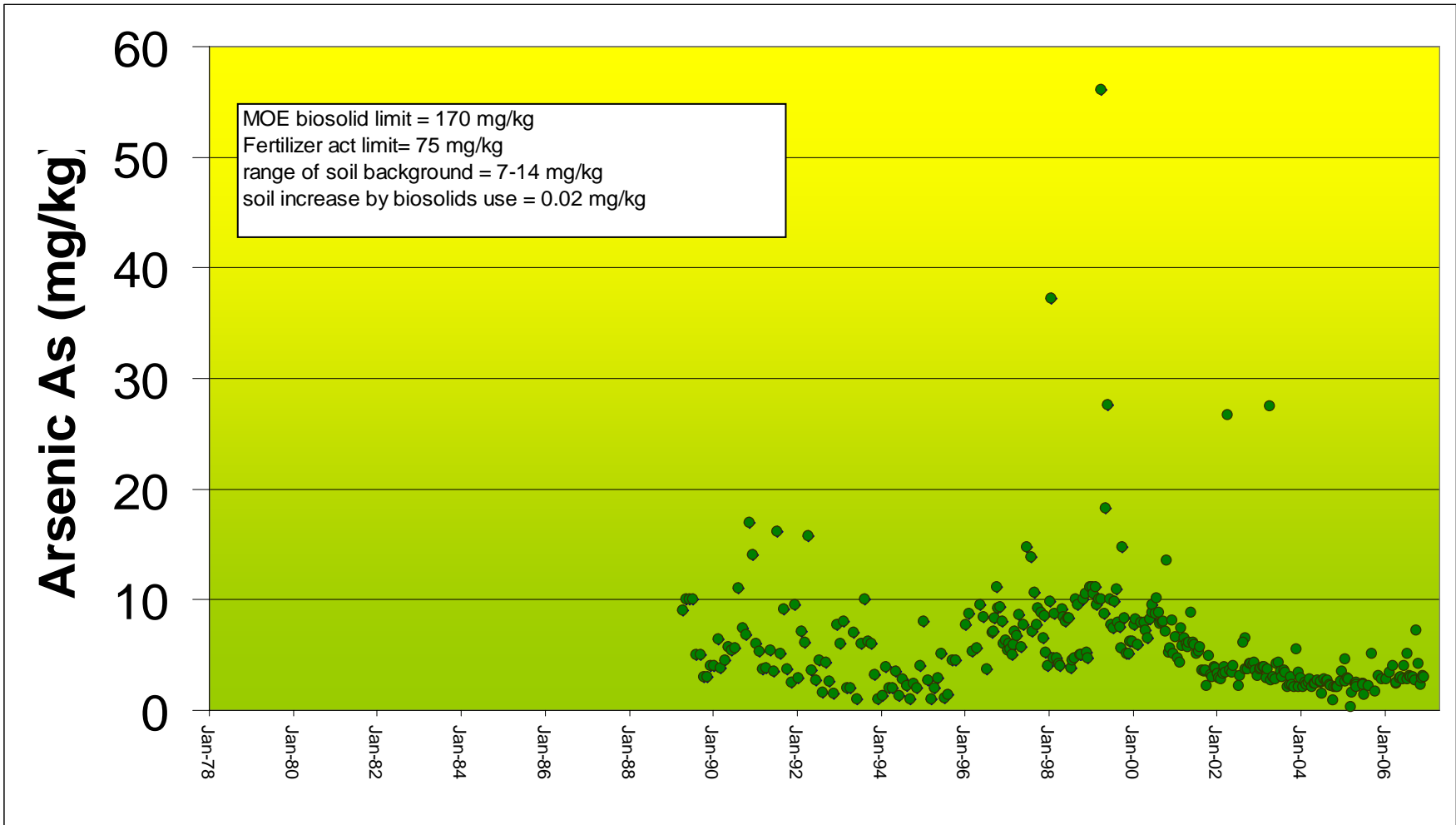


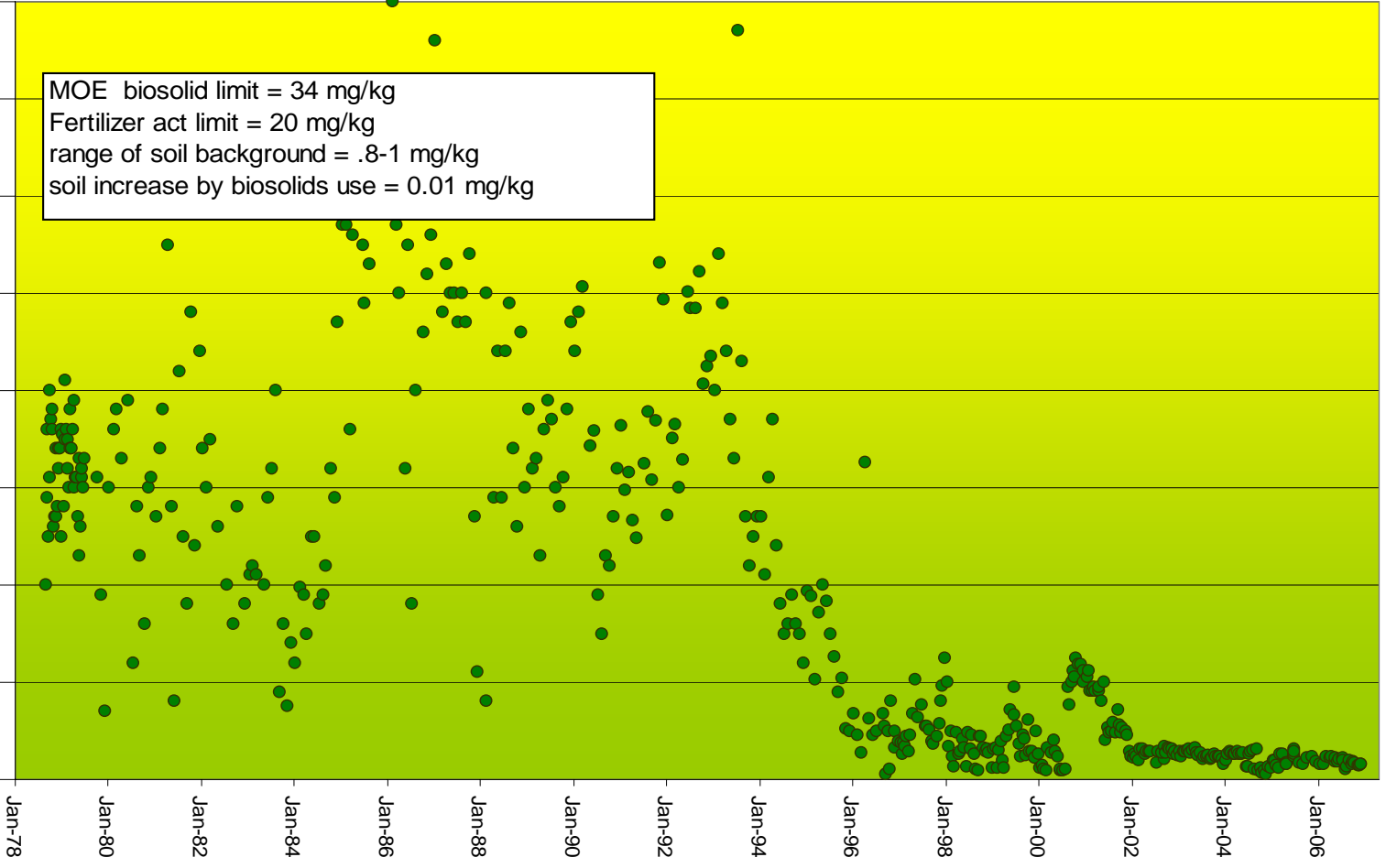
# 2006 biosolids metals update

- History of Ashbridges Bay Treatment Plant Biosolids metals
  - Trends for 11 regulated metals
  - Graphs contain all metals samples analysed since 1978, one sample per data point
  - Typical sampling is daily aliquots to build a bimonthly composite sample



# Cadmium Cd (mg/kg)

80  
70  
60  
50  
40  
30  
20  
10  
0



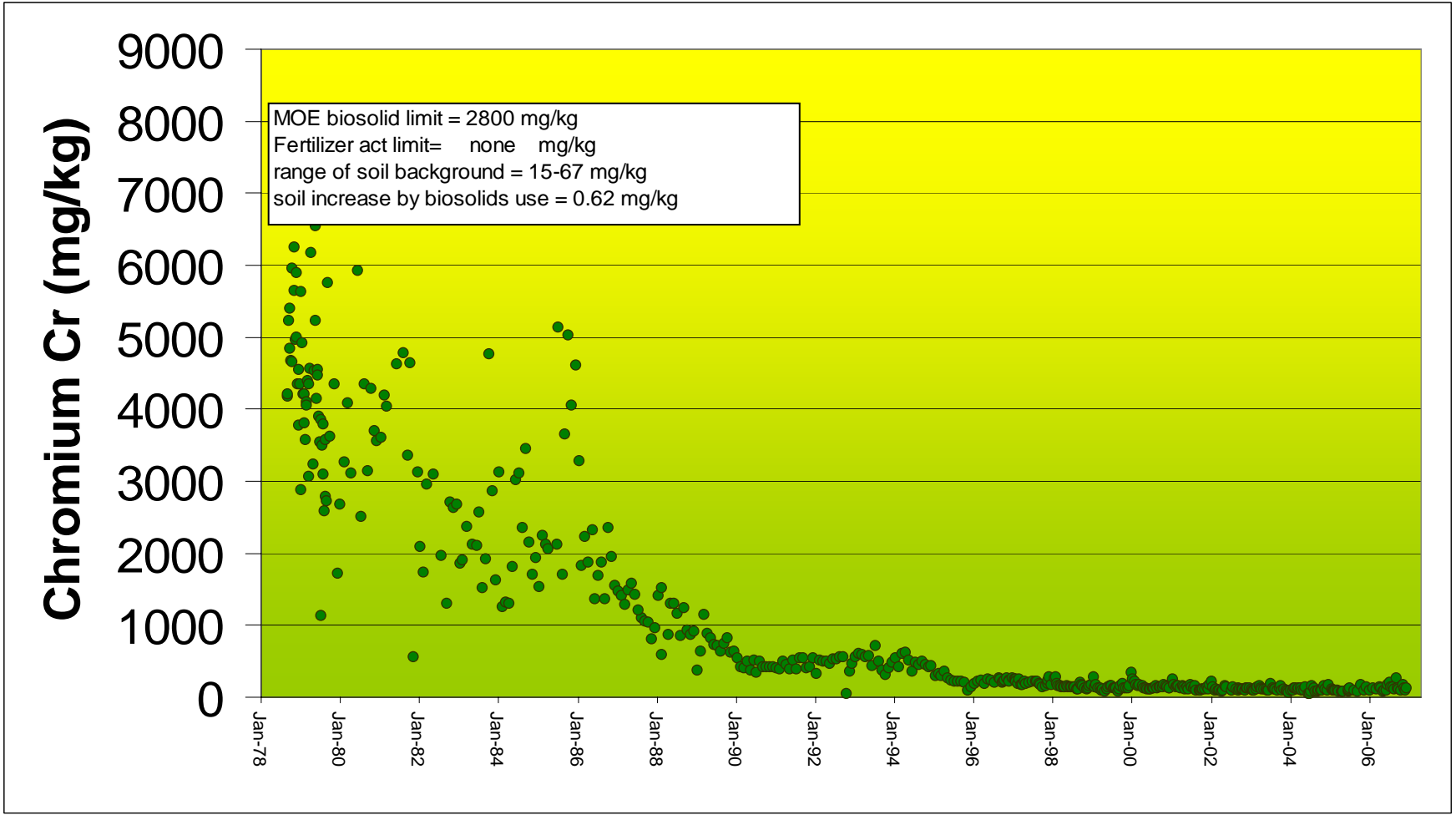


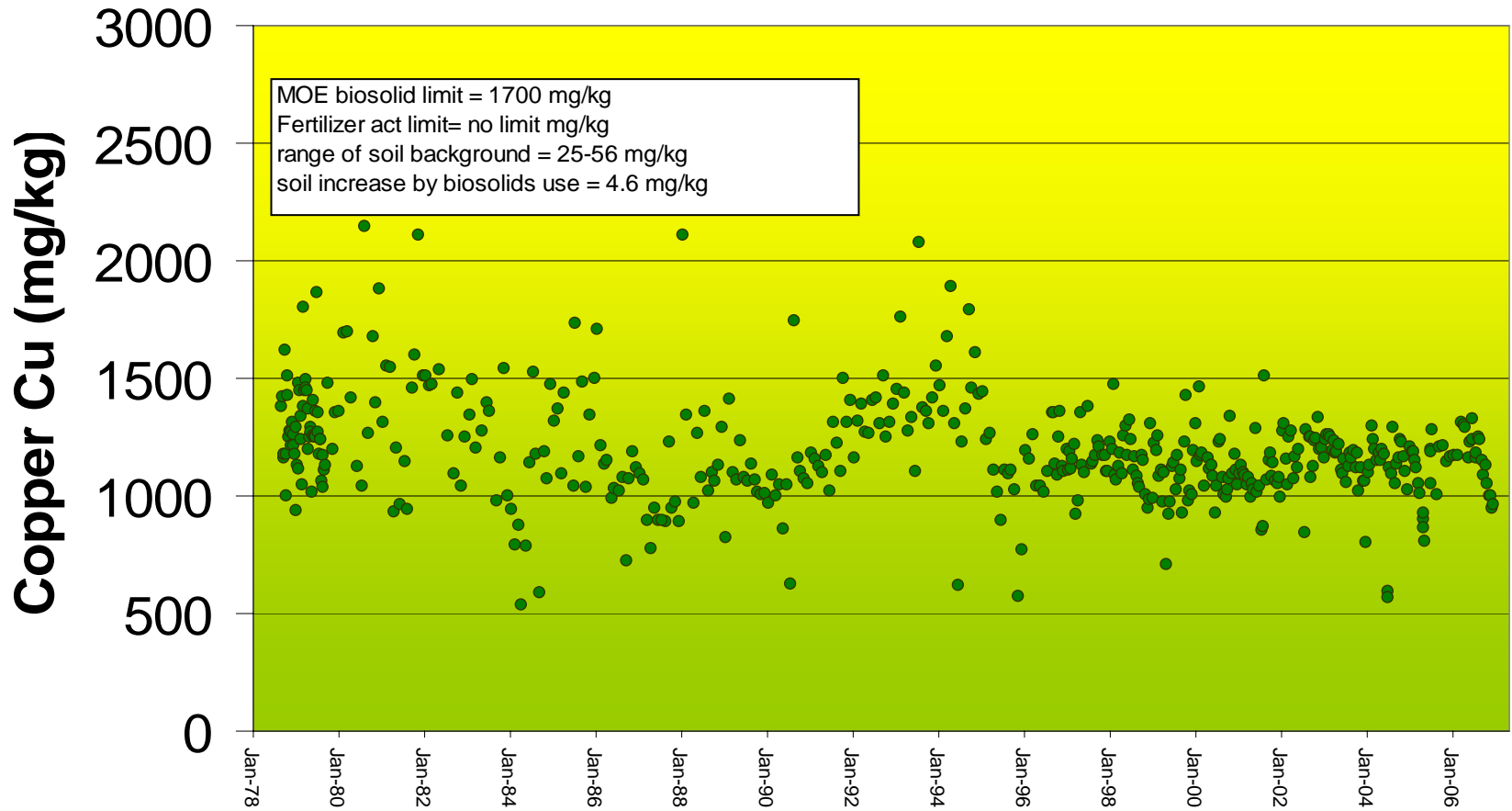
**Chromium Cr (mg/kg)**

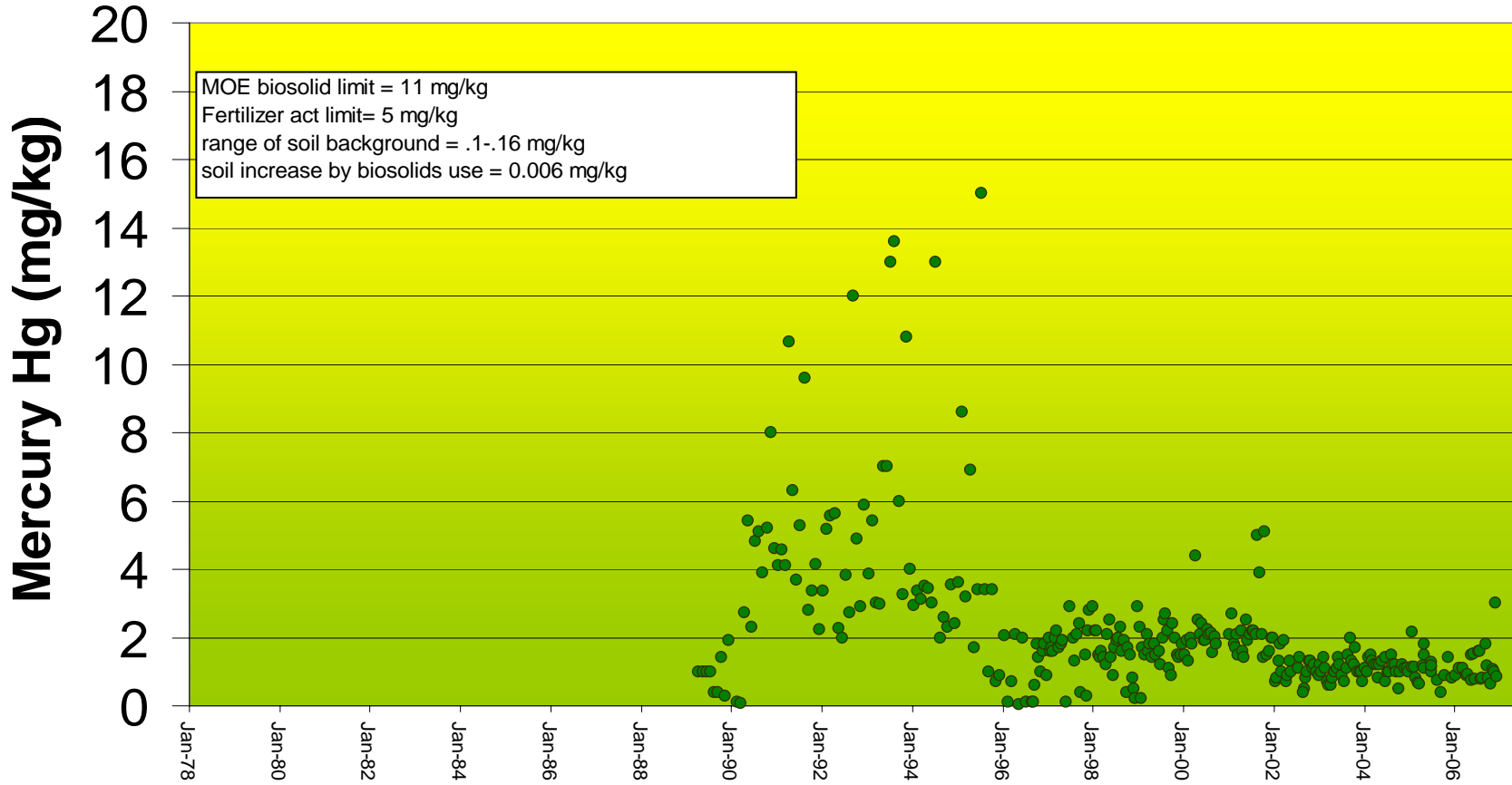
9000  
8000  
7000  
6000  
5000  
4000  
3000  
2000  
1000  
0

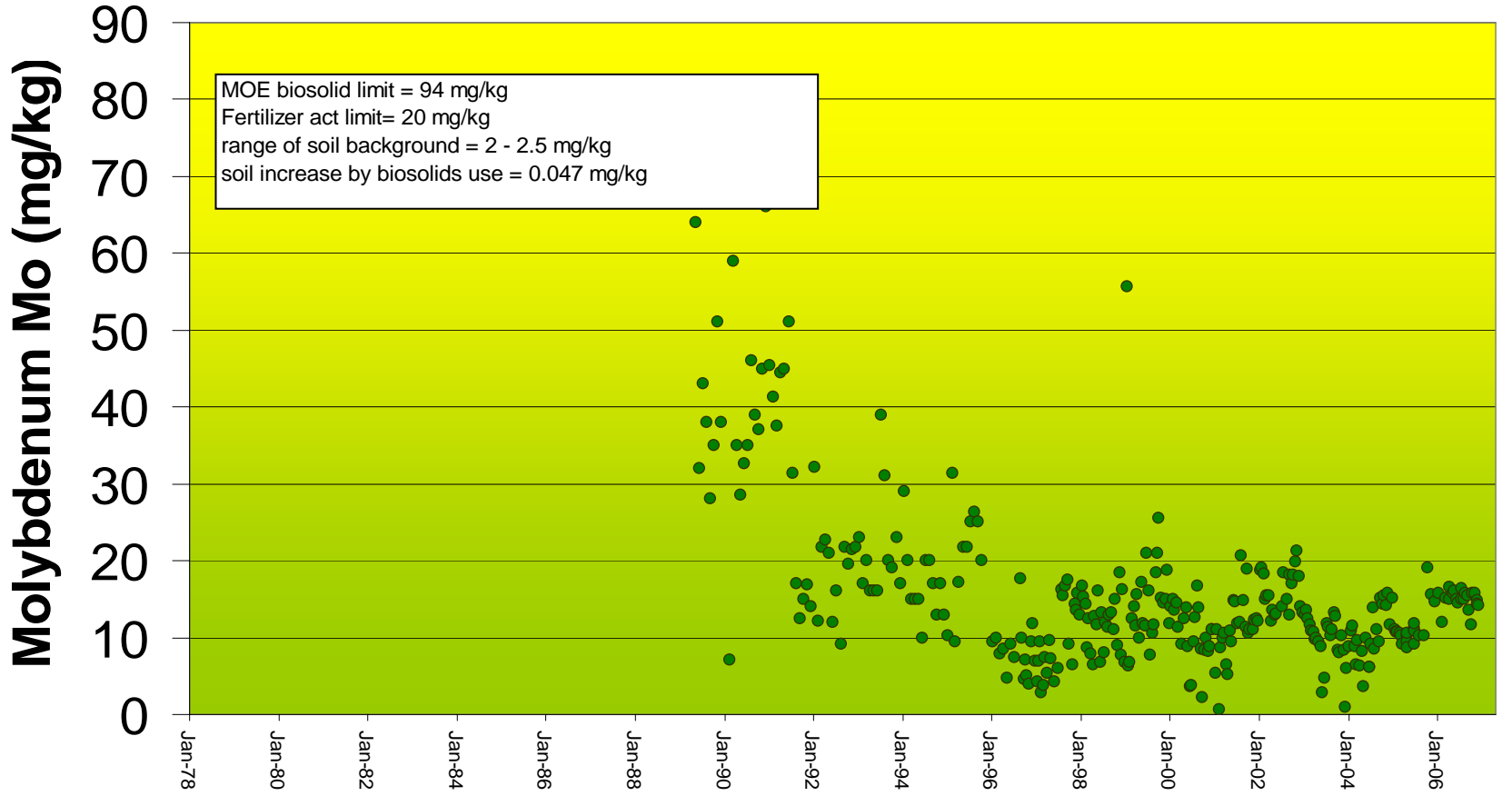
MOE biosolid limit = 2800 mg/kg  
Fertilizer act limit = none mg/kg  
range of soil background = 15-67 mg/kg  
soil increase by biosolids use = 0.62 mg/kg

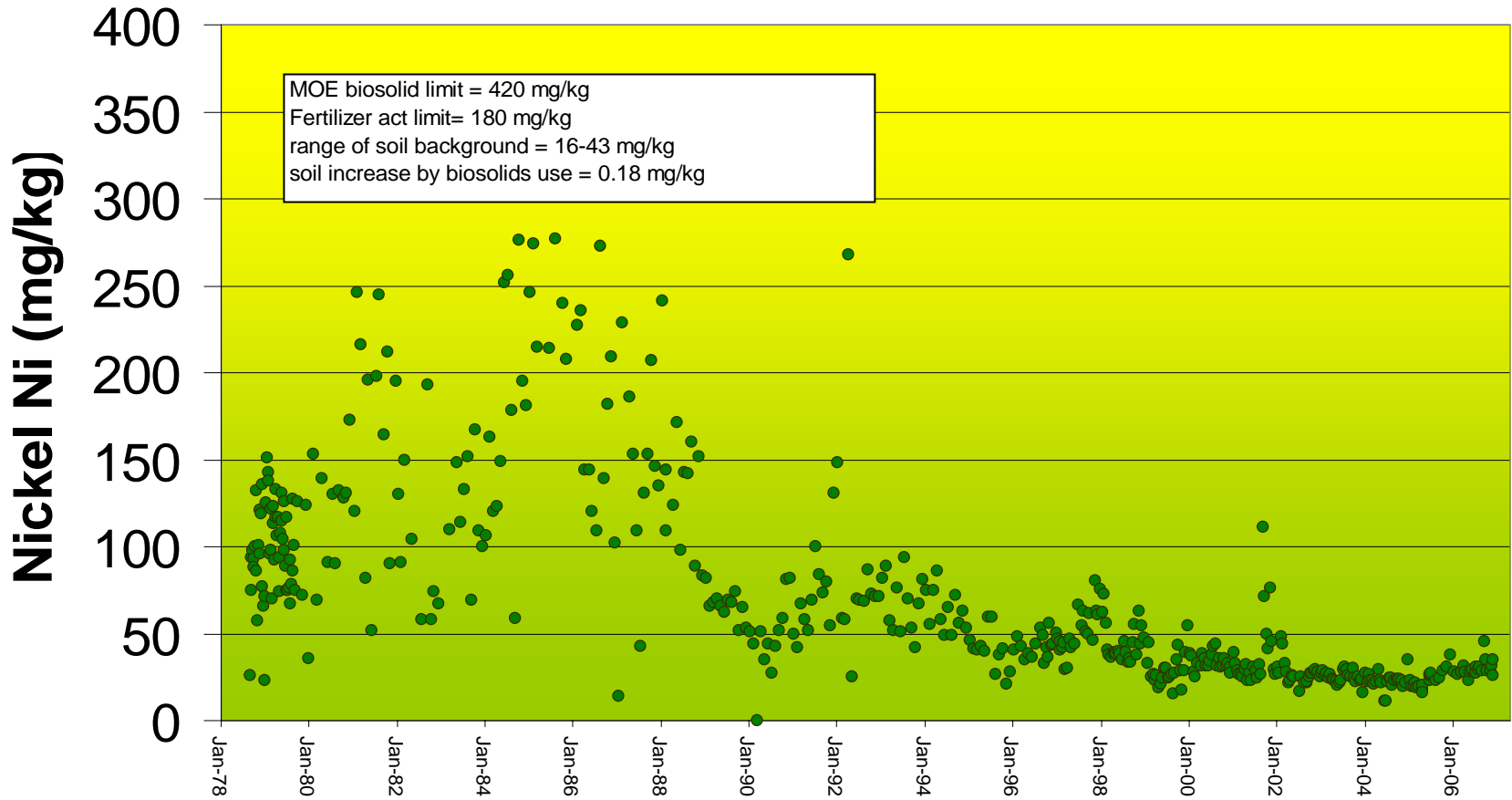
Jan-78 Jan-80 Jan-82 Jan-84 Jan-86 Jan-88 Jan-90 Jan-92 Jan-94 Jan-96 Jan-98 Jan-00 Jan-02 Jan-04 Jan-06













# Selenium Se (mg/kg)

